

# CIC NUMBER 133

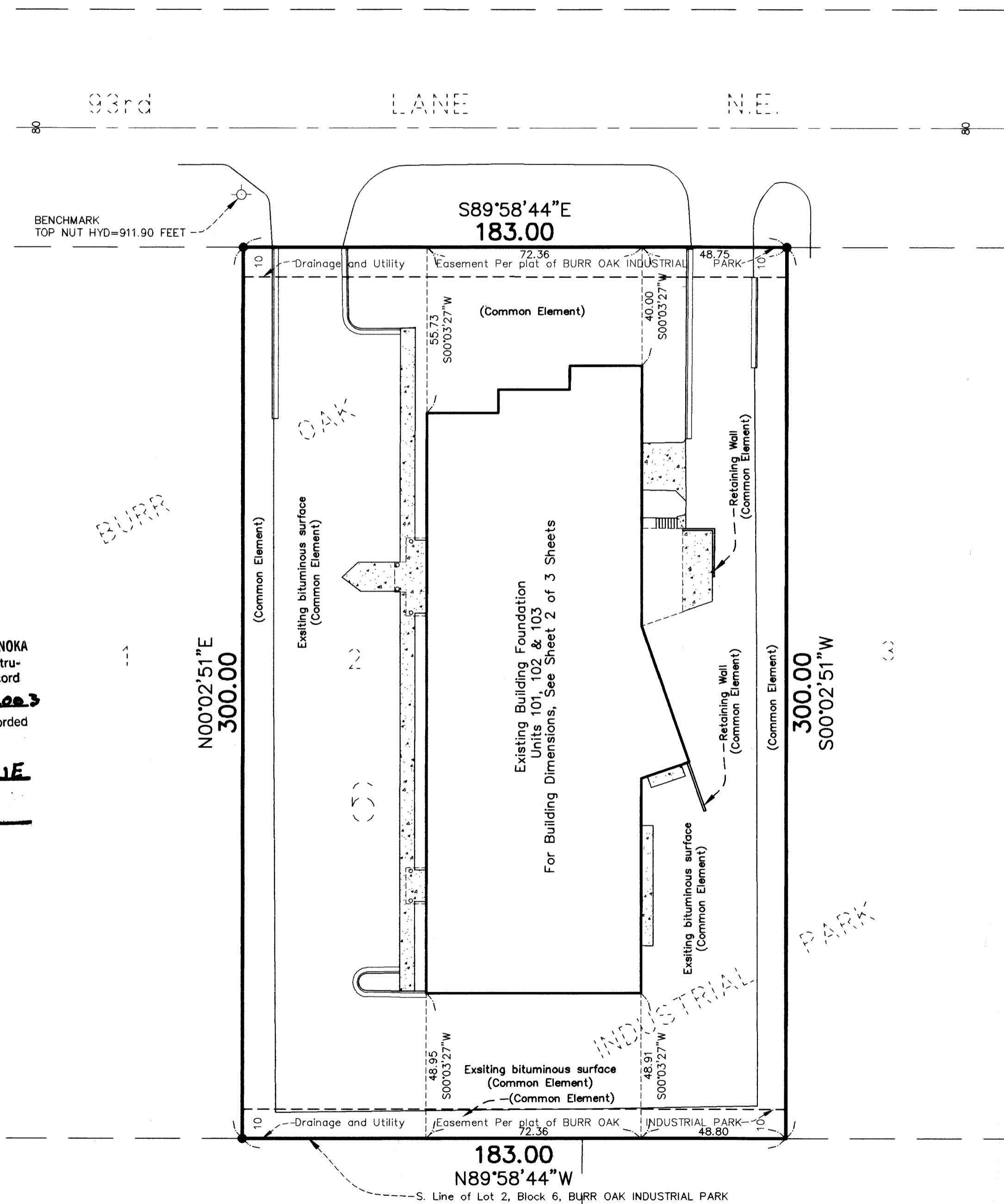
## JORGENSEN BUILDING ONE CONDOMINIUM

### CIC PLAT

This CIC plat has been recorded as part of the declaration filed as document number \_\_\_\_\_ on the \_\_\_\_\_ day of \_\_\_\_\_, 20\_\_.

City of Blaine  
County of Anoka  
Sec. 29, T. 31, R. 23

### SITE PLAN (As-Built)



1812598  
OFFICE OF COUNTY RECORDER  
STATE OF MINNESOTA, COUNTY OF ANOKA  
I hereby certify that the within instrument was filed in this office for record on the 17 JUN A.D., 2003  
9:25 o'clock A.M., and was duly recorded in book 5 CIC page 48  
**MAUREEN J. DEVLIN**  
County Recorder  
By LTM  
Deputy

I, Jeffrey N. Caine, do hereby certify that the work was undertaken by or reviewed and approved by me for this CIC Plat of CIC NUMBER 133, JORGENSEN BUILDING ONE CONDOMINIUM, being located upon:

Lot 2, Block 6, BURR OAK INDUSTRIAL PARK, according to the recorded plat thereof, Anoka County, Minnesota.

Fully and accurately depicts all information required by Minnesota Statutes, Section 515B.2-110.

Dated this 22nd day of April, 2003

Jeffrey N. Caine  
Jeffrey N. Caine, Land Surveyor  
Minnesota License No. 12251

STATE OF MINNESOTA  
COUNTY OF ANOKA

The foregoing instrument was acknowledged before me this 22nd day of April, 2003, by Jeffrey N. Caine, a Licensed Land Surveyor.

**JILL M. KENT**  
NOTARY PUBLIC - MINNESOTA  
MY COMMISSION EXPIRES 11-31-2005

Jill M. Kent  
Notary Public, Anoka County, Minnesota  
My Commission Expires 01-31-05

I, Leon P. Opatz, Pursuant to Minnesota Statutes, Section 515B.2-101(c), do hereby certify that all structural components and mechanical systems of all buildings containing or comprising any units thereby created are substantially completed.

Dated this 22nd day of April, 2003

Leon P. Opatz  
Leon P. Opatz, Registered Engineer  
Minnesota Registration No. 21810

STATE OF MINNESOTA  
COUNTY OF ANOKA

The foregoing instrument was acknowledged before me this 22nd day of April, 2003, by Leon P. Opatz, a Registered Engineer.

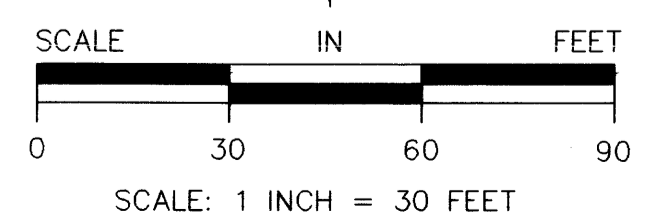
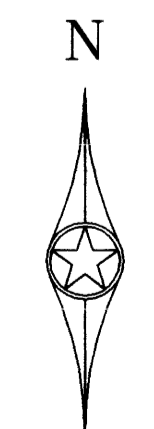
**TRACY L. CONRADI**  
NOTARY PUBLIC - MINNESOTA  
My Commission Expires Jun. 31, 2005

Tracy L. Conradi  
Notary Public, Anoka County, Minnesota  
My Commission Expires 6-31-05

Pursuant to Minnesota Statutes, Chapter 389.09, Subd. 2, this CIC Plat has been reviewed and is approved this 17th day of June, 2003

By: Larry O. Hain  
Deputy  
County Surveyor

I HEREBY CERTIFY THAT THE CURRENT AND DELINQUENT TAXES ON THE LANDS DESCRIBED WITHIN ARE PAID AND THE TRANSFER IS ENTERED June 17, 2003  
**MAUREEN J. DEVLIN**  
PROPERTY TAX ADMINISTRATOR  
By: J. Culm  
DEPUTY PROPERTY TAX ADMINISTRATOR



### BENCH MARK

Top Nut Hydrant on S. side of 93rd Lane N.E. at NW. Cor. of Lot 2, Block 6, BURR OAK INDUSTRIAL PARK.  
Elevation = 911.90 feet (N.G.V.D. 1929)

• DENOTES FOUND MONUMENT.

NOTE: FOR THE PURPOSES OF THIS PLAT, THE SOUTH LINE OF LOT 2, BLOCK 6, BURR OAK INDUSTRIAL PARK IS ASSUMED TO BEAR N 89°58'44"W.  
**RLK - Kuusisto, Ltd.**  
1321 Andover Blvd. NE Suite 114 Ham Lake, MN 55304  
Bibbing, Ham Lake, Minnetonka, Twin Ports  
Phone: (763) 434-7646

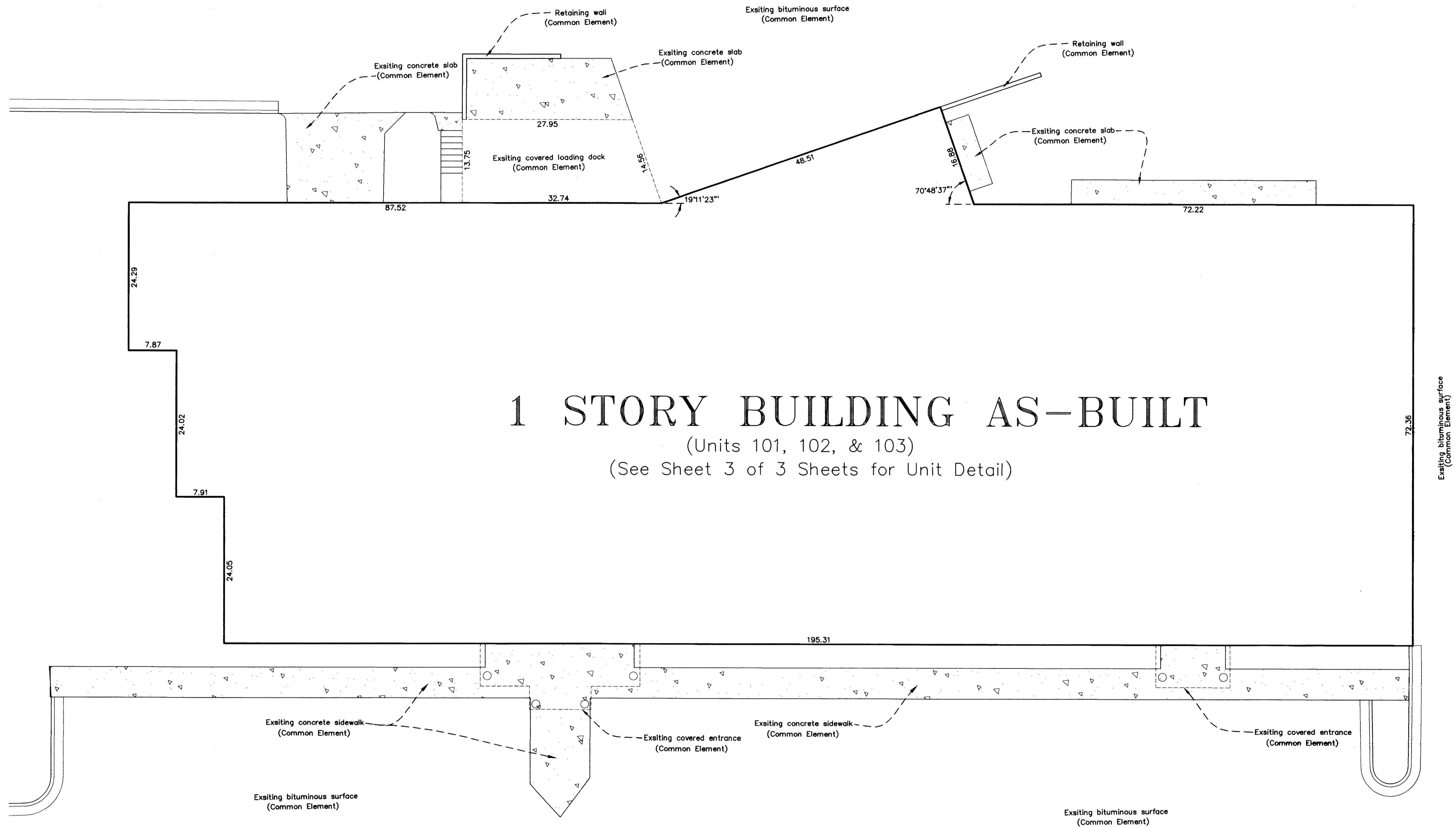


RECEIPT # 2003078933 / \$ 78.00

# CIC NUMBER 133

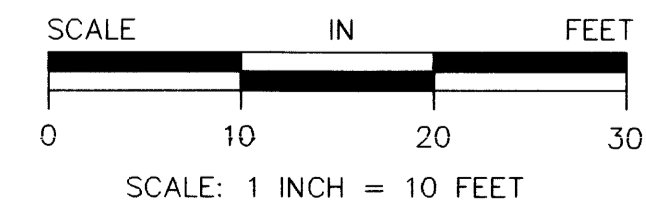
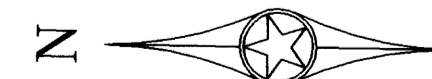
## JORGENSEN BUILDING ONE CONDOMINIUM

### CIC PLAT



# 1 STORY BUILDING AS-BUILT

(Units 101, 102, & 103)  
(See Sheet 3 of 3 Sheets for Unit Detail)



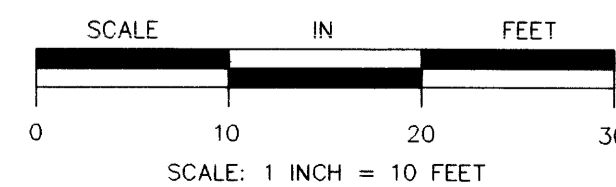
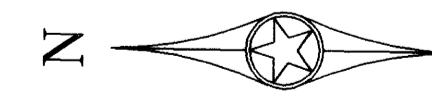
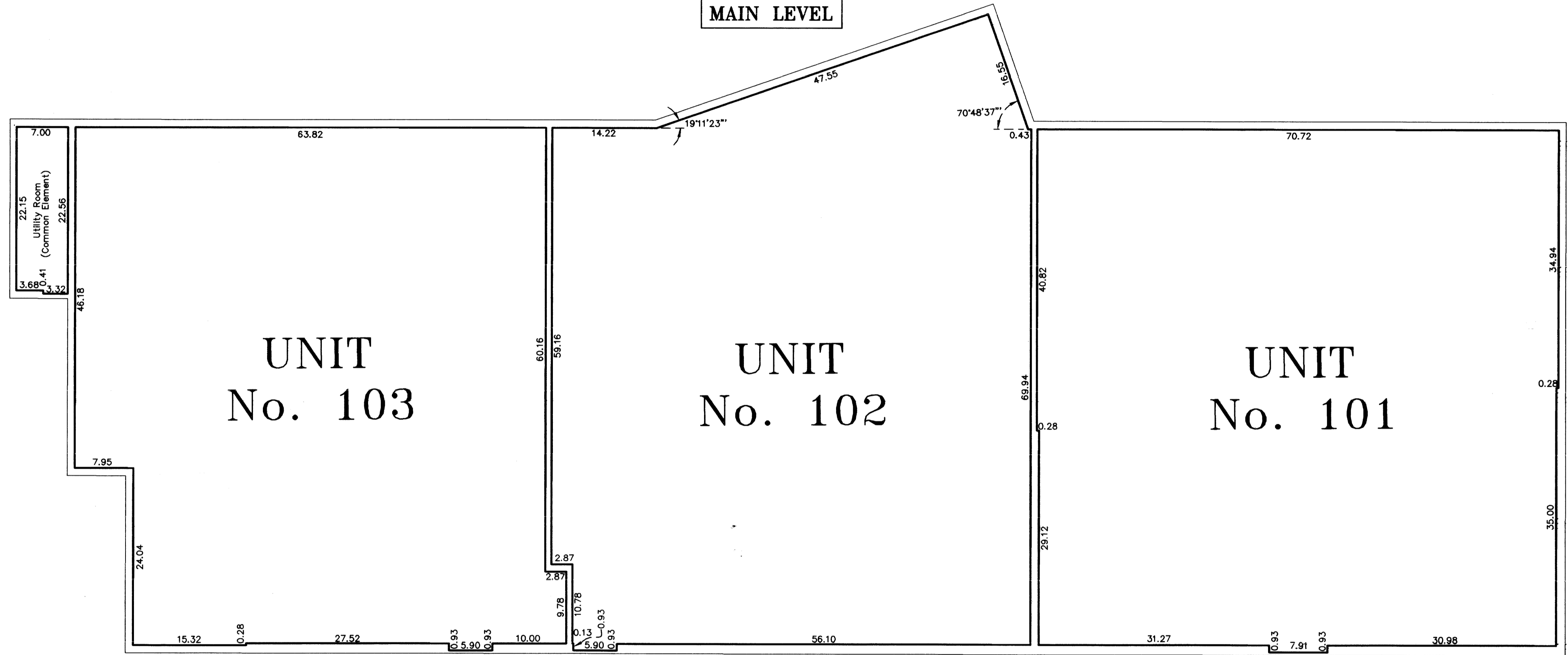
RLK - Kuusisto, Ltd.  
1321 Andover Blvd. NE Suite 114 Ham Lake, MN 55304  
Hibbing, Ham Lake, Minnetonka, Twin Ports  
Phone: (763) 434-7646

# CIC NUMBER 133

JORGENSEN BUILDING ONE CONDOMINIUM  
CIC PLAT

UNIT DETAIL

MAIN LEVEL



All main level floor elevations = 913.20 feet.  
 Main level ceiling elevation Unit 101 varies from 921.13 feet to 933.55 feet.  
 Main level ceiling elevation Unit 102 varies from 921.84 feet to 933.55 feet.  
 Main level ceiling elevation Unit 103 varies from 921.75 feet to 933.55 feet.

Interior dimensions shown are measured to the unfinished surface of the walls, floors and ceilings and are shown in feet and hundredths of a foot.

Elevations are referred to Benchmark as noted on site plan and are shown in feet and hundredths of a foot.



RLK - Kuusisto, Ltd.  
 1321 Andover Blvd. NE Suite 114 Ham Lake, MN 55304  
 Hibbing, Ham Lake, Minnetonka, Twin Ports  
 Phone: (763) 434-7846