

OFFICIAL PLAT

I, Terrence E. Rothenbacher, hereby certify that the work was undertaken by or reviewed and approved by me for this FOURTH SUPPLEMENTAL CIC Plat of CIC Number 141, WATERFORD PLACE, A CONDOMINIUM, being located upon

Lot 5, Block 1, CLUB WEST NINTH ADDITION, Anoka County, Minnesota, and the additional real estate is located upon the following described property designated as:
Lots 2 and 3 Block 1; Lots 6 through 9, inclusive, Block 1; Lot 11, Block 1; Lots 13 through 21, inclusive, Block 1; Lot 23, Block 1, and Outlot C, CLUB WEST NINTH ADDITION, Anoka County, Minnesota,

and that this CIC Plat fully and accurately depicts all information required by Minnesota Statutes, Section 515B.2-110.

Dated this 29th day of April, 2004.

Terrence E. Rothenbacher
Terrence E. Rothenbacher, Land Surveyor
Minnesota License No. 20595

I HEREBY CERTIFY THAT THE CURRENT AND DELINQUENT TAXES ON THE LANDS DESCRIBED WITHIN ARE PAID AND THE TRANSFER IS ENTERED
June 9, 2004
MAUREEN J. DIVINE
PROPERTY TAX ADMINISTRATOR
BY *S. Culver*
DEPUTY PROPERTY TAX ADMINISTRATOR

STATE OF MINNESOTA
COUNTY OF ANOKA

The foregoing certificate was acknowledged before me this 29th day of April, 2004, by Terrence E. Rothenbacher, a Licensed Professional Land Surveyor.

CHRISTOPHER E. SHARP
NOTARY PUBLIC
MY COMM. EXP. 01/31/2005

Christine E. Sharp
Notary Public, Anoka County, Minnesota
My Commission Expires Jan. 31, 2005

I, Paul J. Cherne pursuant to Minnesota Statutes, Section 515B.2-101(c), do hereby certify that all the units and all structural components and mechanical systems of all buildings containing or comprising any units hereby created, are substantially completed.

Dated this 29th day of April, 2004.

Paul J. Cherne
Registered Professional Engineer
Minnesota Registration No. 19860

STATE OF MINNESOTA
COUNTY OF ANOKA

The foregoing certificate was acknowledged before me this 29th day of April, 2004, by PAUL J. CHERNE, a Registered Professional Engineer.

CHRISTOPHER E. SHARP
NOTARY PUBLIC
MY COMM. EXP. 01/31/2005

Christine E. Sharp
Notary Public, Anoka County, Minnesota
My Commission Expires Jan. 31, 2005

Checked and approved this 25th day of MAY, 2004.

Larry D. Ha
Anoka County Surveyor

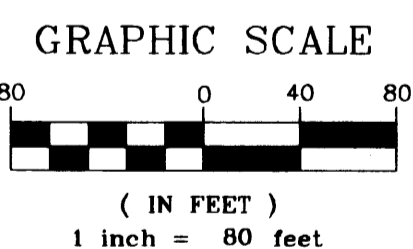
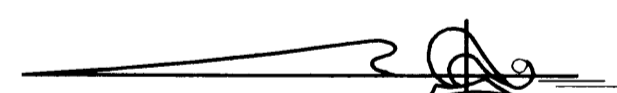
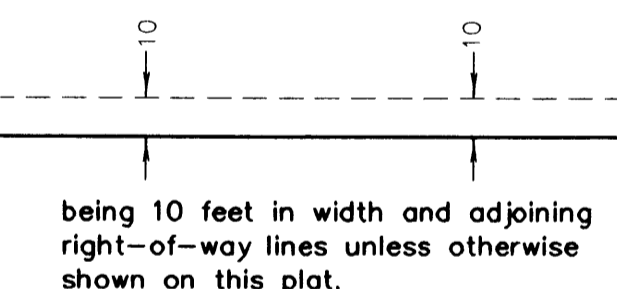
DRAINAGE AND UTILITY EASEMENTS ARE SHOWN THUS: (NOT TO SCALE)

- △ Denotes Restricted Right of Access as dedicated in the plat of CLUB WEST
- Denotes 1/2 inch by 14 inch iron monument set and marked with license number 20595
- Denotes found monument

BENCH MARK

Top nut hydrant ± 400' (FT.) West of Intersection of 113th Avenue NE. & Arnold Palmer Drive on North side of Street.
Elevation= 905.59 (NGVD 1929)

For the purposes of this plat, the south line of Outlot C, CLUB WEST NINTH ADDITION is assumed to have a bearing of North 89°49'20" East.



CLUB WEST NINTH ADDITION FOURTH

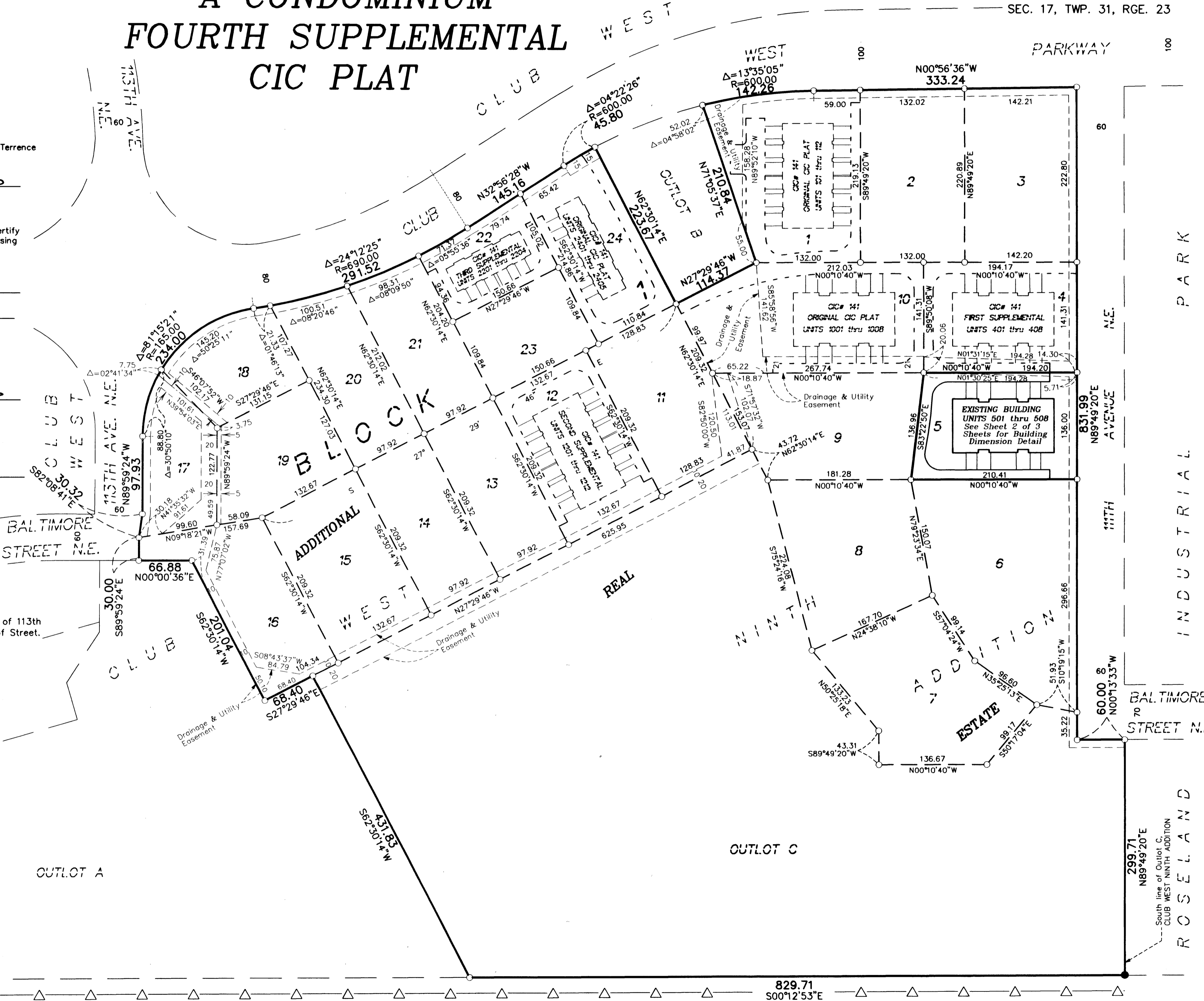
CIC NUMBER 141 WATERFORD PLACE A CONDOMINIUM FOURTH SUPPLEMENTAL CIC PLAT

Office of REGISTRAR OF TITLES
STATE OF MINNESOTA
COUNTY OF ANOKA
468781.0
I hereby certify that the within instrument was filed in this office on June 9, 2004 at 4:15 o'clock P.M.
Maureen J. Divine, Registrar of Titles
Deputy Registrar of Titles

BK 7 of CIC, pg 4

This FOURTH SUPPLEMENTAL CIC PLAT is part of the FOURTH Declaration filed as Document No. 468781 on this 9th day of June, 2004.
Nick Ahlman, Deputy
ANOKA COUNTY RECORDER

CITY OF BLAINE
COUNTY OF ANOKA
SEC. 17, TWP. 31, RGE. 23



PIONEER engineering
LAND SURVEYORS • CIVIL ENGINEERS
LAND PLANNERS • LANDSCAPE ARCHITECTS

STATE TRUNK HIGHWAY NO. 65
(MINNESOTA DEPARTMENT OF TRANSPORTATION MONUMENTATION PLAT 02-M17)

2004079874 \$357.00

OFFICIAL PLAT

UNIT DETAIL
(AS-BUILT)

CIC NUMBER 141

WATERFORD PLACE

A CONDOMINIUM

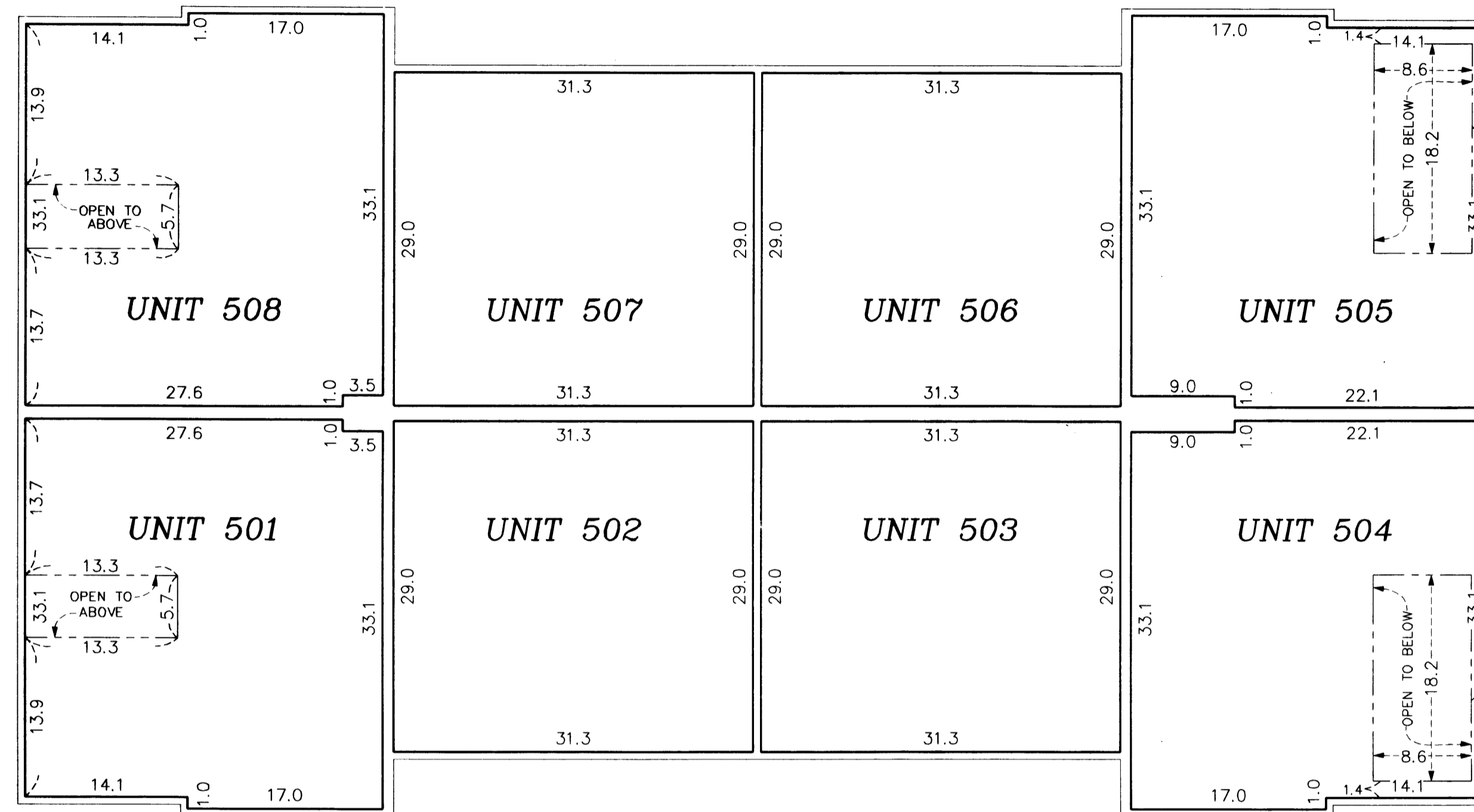
FOURTH SUPPLEMENTAL CIC PLAT

SECOND LEVEL

BK 7 of CIC, pg 4

CR DOC. NO. 468781

CITY OF BLAINE
COUNTY OF ANOKA
SEC. 17, TWP. 31, RGE. 23



First Level Elevations

All units garage floor elevation at door = 898.5 feet
 All units garage floor elevation in back of garage = 898.7 feet
 All units garage ceiling elevations = 908.2 feet
 All Units first level floor elevations = 899.1 feet
 Units 501, 504, 505, and 508 first level ceiling elevation varies from 908.2 feet to 917.7 feet
 Units 502, 503, 506, and 507 first level ceiling elevations = 908.2 feet

Second Level Elevations

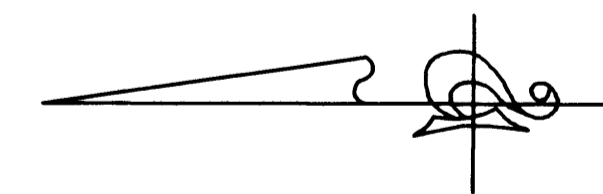
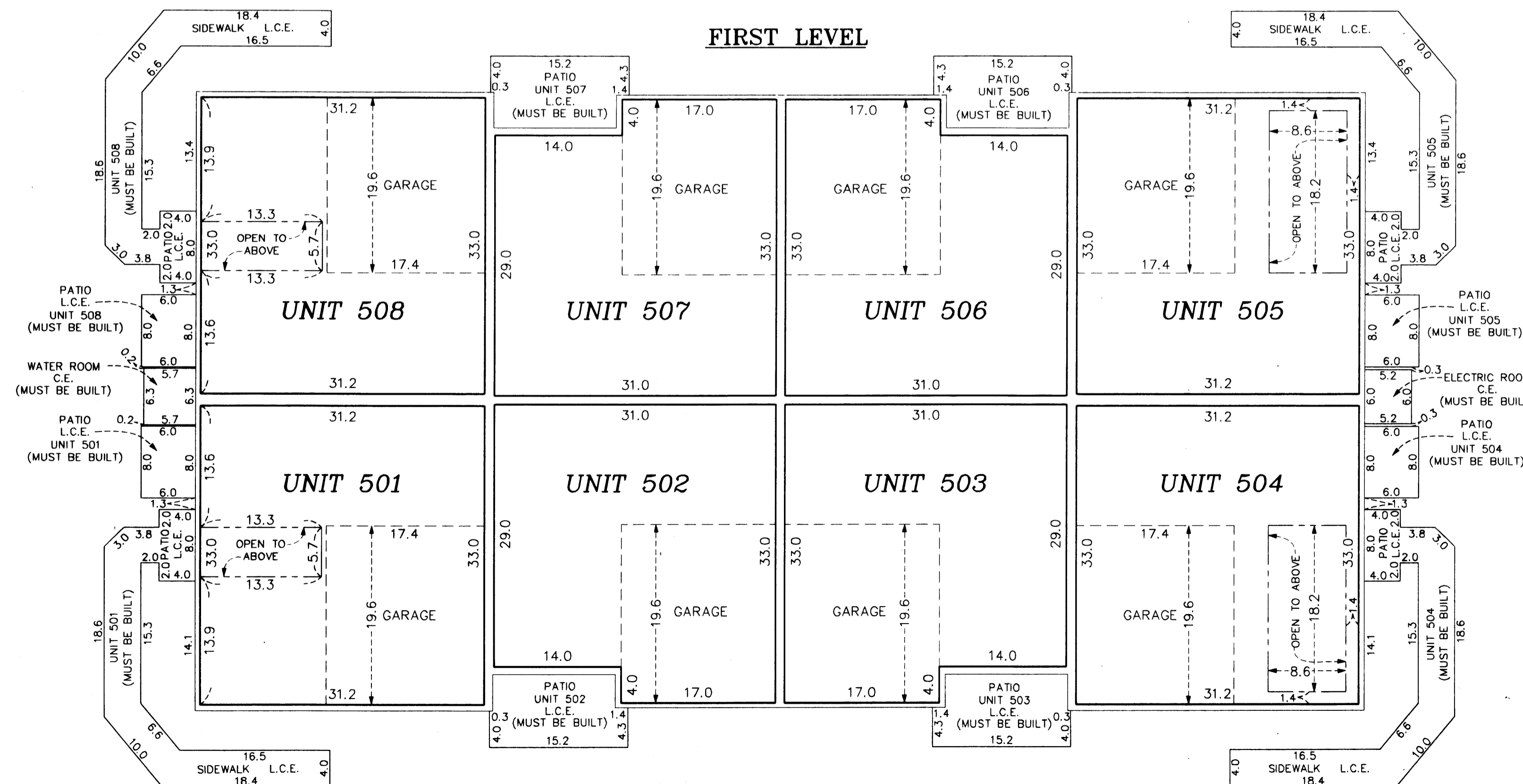
All units second level floor elevation = 909.6 feet
 All units second level ceiling elevations = 917.7 feet

Elevations are referred to a benchmark as noted on the site plan on Sheet 1 of 3 Sheets and are shown in feet and tenths of a foot.

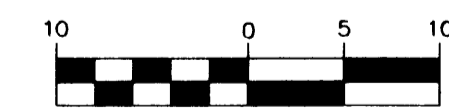
L.C.E. = Limited Common Element
 C.E. = Common Element

Interior dimensions shown are measured to the unfinished surface of the walls, floors and ceiling.

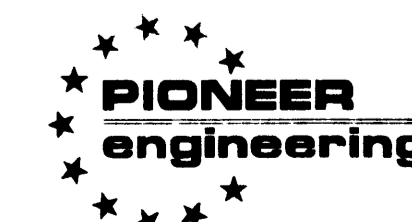
FIRST LEVEL



GRAPHIC SCALE



(IN FEET)
 1 inch = 10 feet



LAND SURVEYORS • CIVIL ENGINEERS
 LAND PLANNERS • LANDSCAPE ARCHITECTS

2004079874 \$357.00