

This TWELFTH SUPPLEMENTAL CIC plat is part of the TWELFTH SUPPLEMENTAL TO DECLARATION recorded as Document No. 502656.003 on this 27th day of September, 2010.

CITY OF BLAINE
COUNTY OF ANOKA
SEC. 09, TWP. 31, RGE. 23

SITE PLAN

CIC NUMBER 180

GABLES AT WATERSTONE BAY

A CONDOMINIUM

TWELFTH SUPPLEMENTAL

CIC PLAT

I, John C. Larson, do hereby certify that the work was undertaken by or reviewed and approved by me for this TWELFTH SUPPLEMENTAL CIC Plat of CIC NUMBER 180, GABLES AT WATERSTONE BAY, A CONDOMINIUM, being located upon

Lot 6, Block 3, THE LAKES OF RADISSON FOURTEENTH ADDITION, Anoka County, Minnesota,

and that this CIC plat fully and accurately depicts all information required by Minnesota Statutes, Section 515B.2-110.

Dated this 1st day of September, 2010.

John C. Larson
John C. Larson, Land Surveyor
Minnesota License No. 19828

STATE OF MINNESOTA
COUNTY OF ANOKA

The foregoing instrument was acknowledged before me this 1st day of September, 2010, by John C. Larson, a Licensed Land Surveyor.

Nicholas J. Kalsrud
Nicholas J. Kalsrud
Notary Public, Anoka County, Minnesota
My Commission Expires January 31, 2015.

I, John M. Molinaro, pursuant to Minnesota Statutes, Section 515B.2-101(c), do hereby certify that the structural components of the structures containing the units and the mechanical systems serving more than one unit, are substantially completed.

Dated this 1st day of September, 2010.

John M. Molinaro
John M. Molinaro, Licensed Professional Engineer
Minnesota License No. 45831

STATE OF MINNESOTA
COUNTY OF ANOKA

The foregoing instrument was acknowledged before me this 1st day of September, 2010, by John M. Molinaro, a Licensed Professional Engineer.

Nicholas J. Kalsrud
Nicholas J. Kalsrud
Notary Public, Anoka County, Minnesota
My Commission Expires January 31, 2015.

Pursuant to Minnesota Statutes, Chapter 389.09, Subd. 2, this CIC Plat has been reviewed and is approved this 16th day of SEPTEMBER, 2010.

By: *Larry D. Holm*
Larry D. Holm, Anoka County Surveyor

502656.003
Office of REGISTRAR OF TITLES
STATE OF MINNESOTA
COUNTY OF ANOKA
I hereby certify that the within instrument was filed in this office on 9/27/10 at 11:13 o'clock AM
Registrar of Titles
By: *GKE*
Deputy Registrar of Titles

- Denotes Found Judicial Landmark
- Denotes found iron monument

Bearings are based on the most southerly line of Lot 9, Block 3, THE LAKES OF RADISSON FOURTEENTH ADDITION, which is assumed to have a bearing of South 89 degrees 37 minutes 13 seconds East.

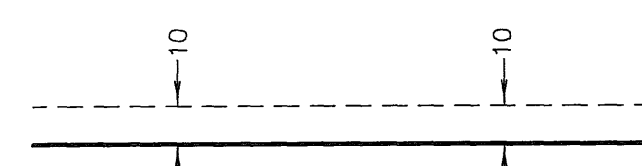
BENCH MARKS

Cast Iron Monument at the Southeast Corner of Section 9, Township 31, Range 23.
Elevation= 904.86 (NGVD 1929)

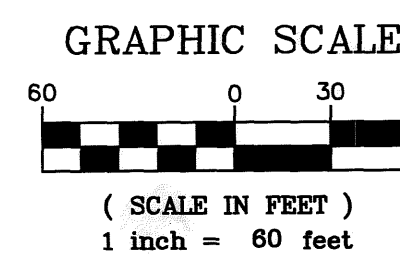
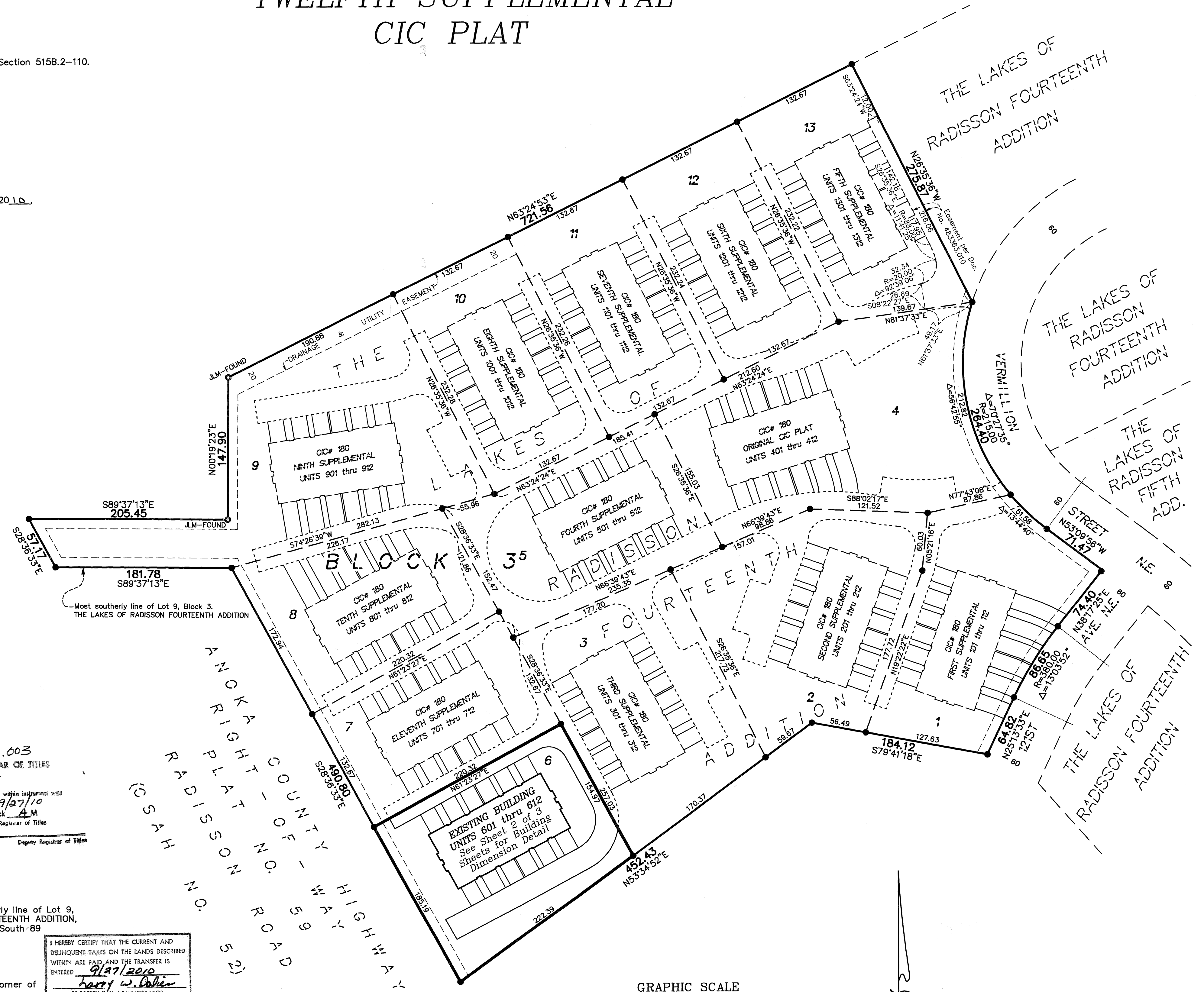
Cast Iron Monument at the North Quarter Corner of Section 9, Township 31, Range 23.
Elevation= 903.09 (NGVD 1929)

I HEREBY CERTIFY THAT THE CURRENT AND DELINQUENT TAXES ON THE LANDS DESCRIBED WITHIN ARE PAID, AND THE TRANSFER IS ENTERED
Larry W. Doherty
PROPERTY TAX ADMINISTRATOR
By: *GKE*
DEPUTY PROPERTY TAX ADMINISTRATOR

DRAINAGE AND UTILITY EASEMENTS ARE SHOWN THUS: (NOT TO SCALE)



being 10 feet in width and adjoining right-of-way lines unless otherwise shown on this plat.



\$ 70.00

PIONEERengineering
CIVIL ENGINEERS LAND PLANNERS LAND SURVEYORS LANDSCAPE ARCHITECTS

BUILDING DIMENSION DETAIL
(AS-BUILT)

CIC NUMBER 180

GABLES AT WATERSTONE BAY

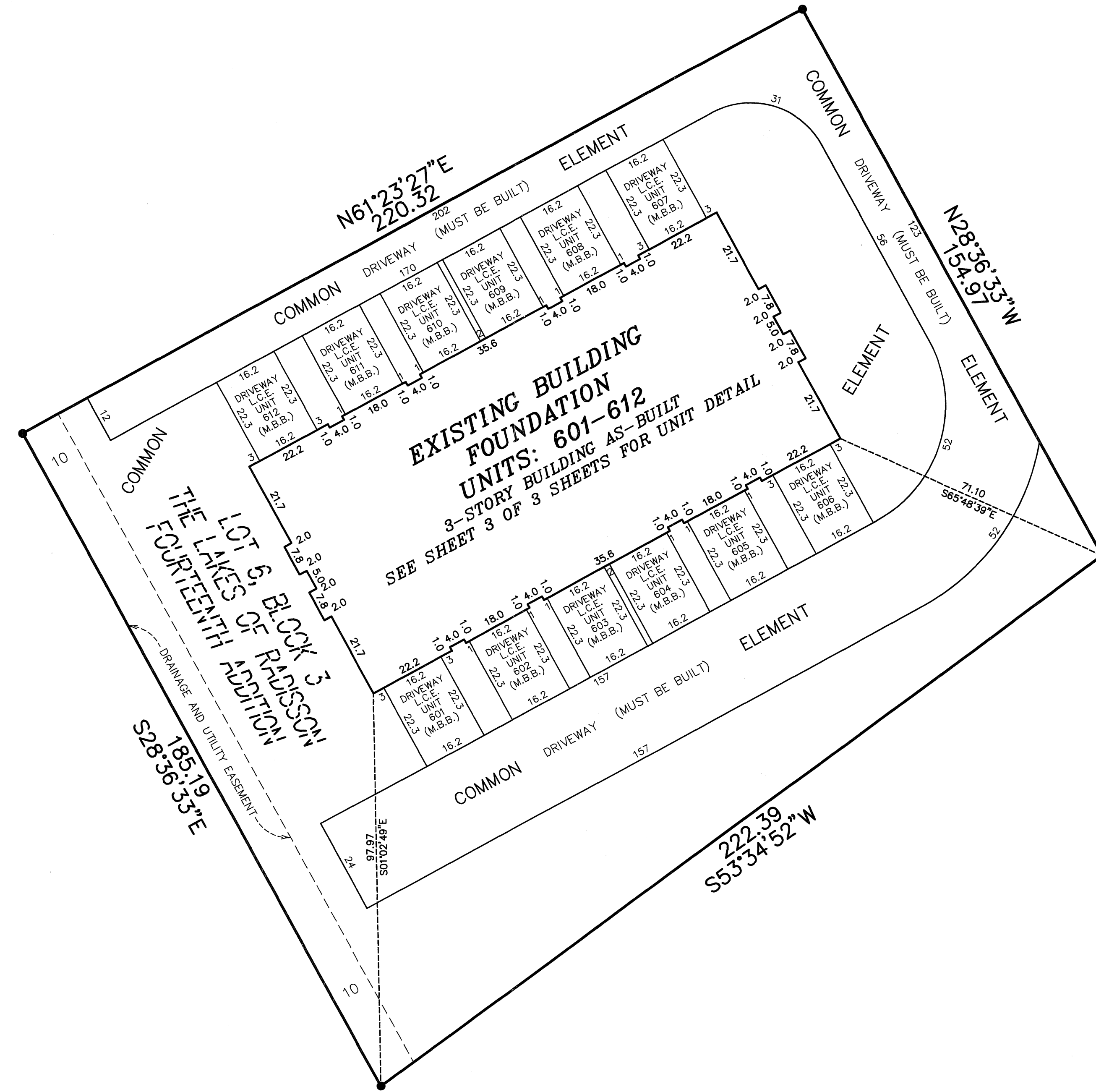
A CONDOMINIUM

TWELFTH SUPPLEMENTAL

CIC PLAT

C.R. DOC. NO 502656.003

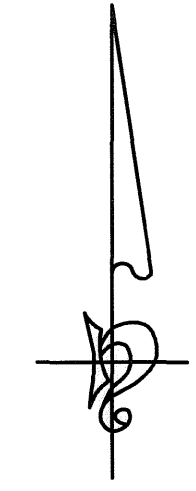
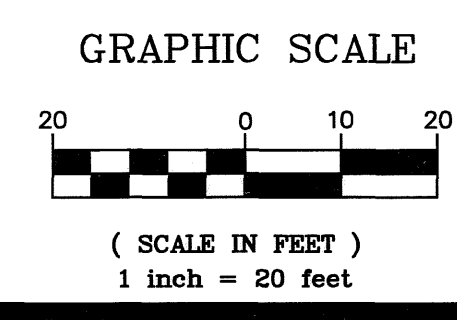
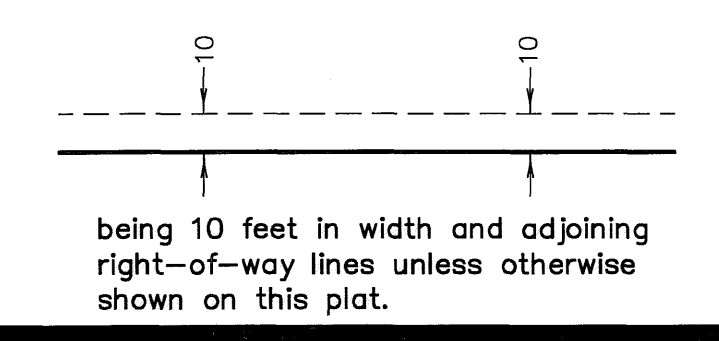
CITY OF BLAINE
COUNTY OF ANOKA
SEC. 09, TWP. 31, RGE. 23



● Denotes found iron monument
L.C.E. = Limited Common Element
C.E. = Common Element
M.B.B. = Must Be Built

Bearings are based on the most southerly line of Lot 9, Block 3, THE LAKES OF RADISSON FOURTEENTH ADDITION, which is assumed to have a bearing of South 89 degrees 37 minutes 13 seconds East.

DRAINAGE AND UTILITY EASEMENTS ARE SHOWN THUS: (NOT TO SCALE)



UNIT DETAIL
(AS-BUILT)

CIC NUMBER 180

GABLES AT WATERSTONE BAY

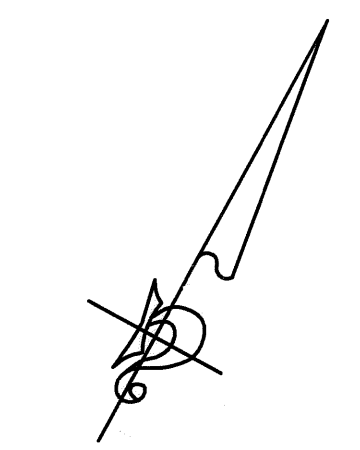
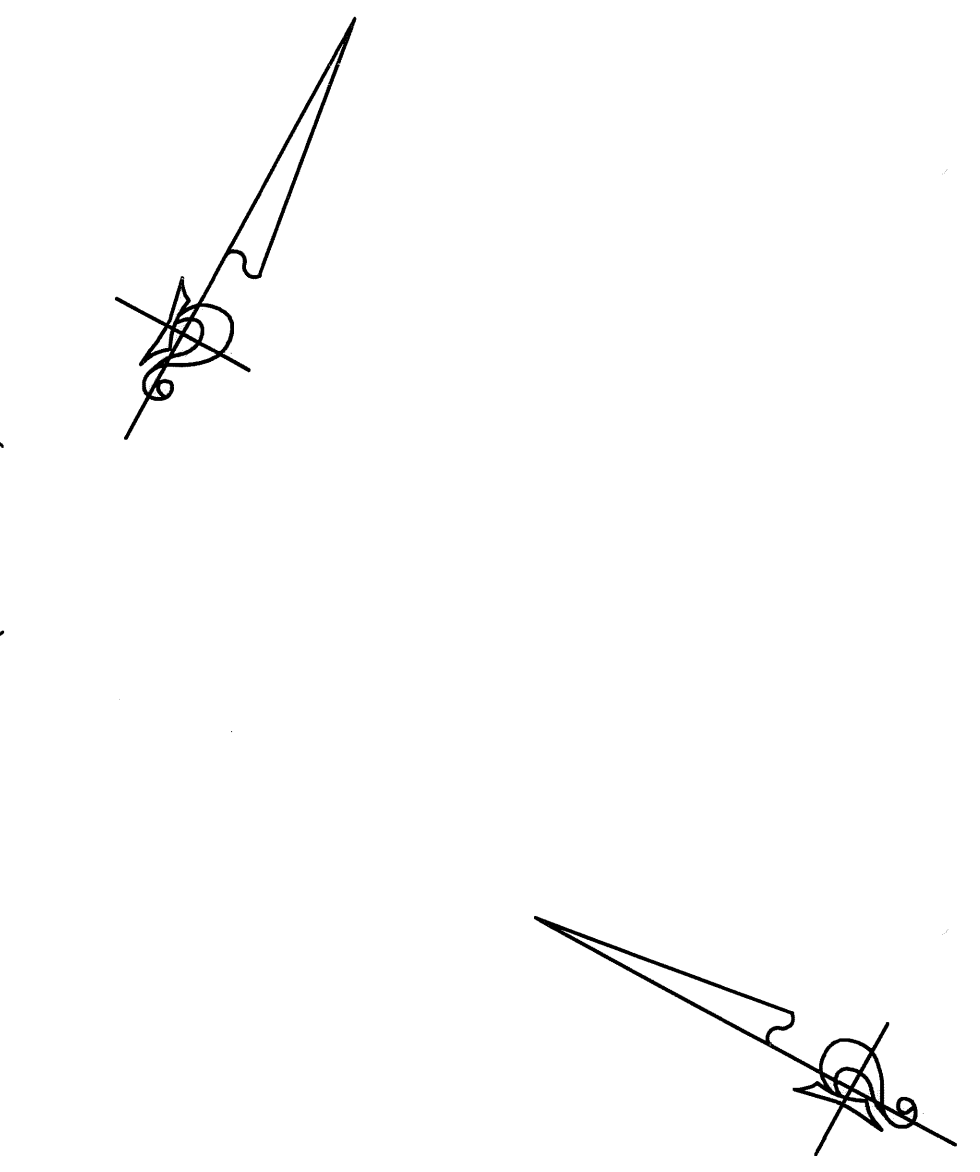
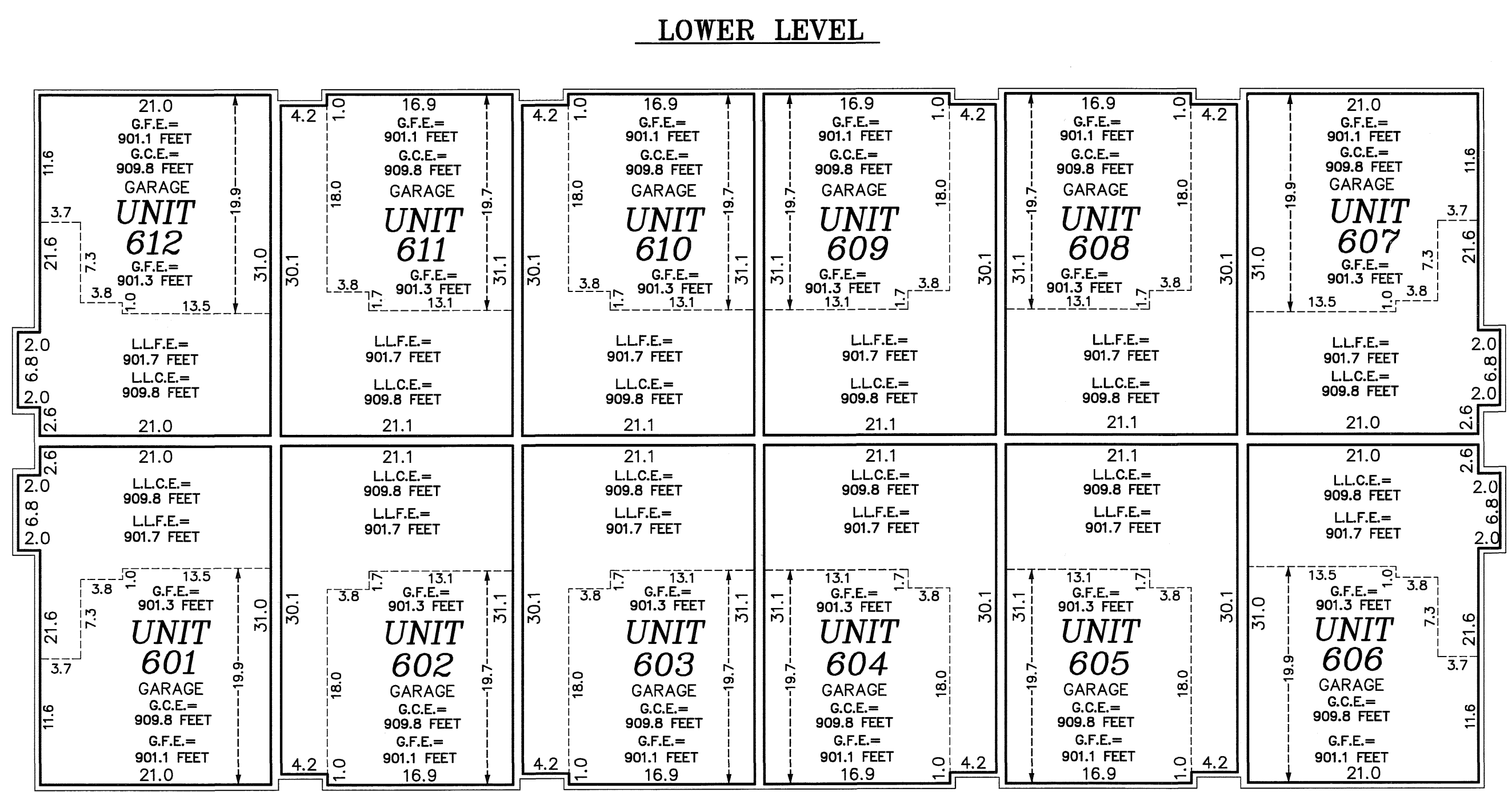
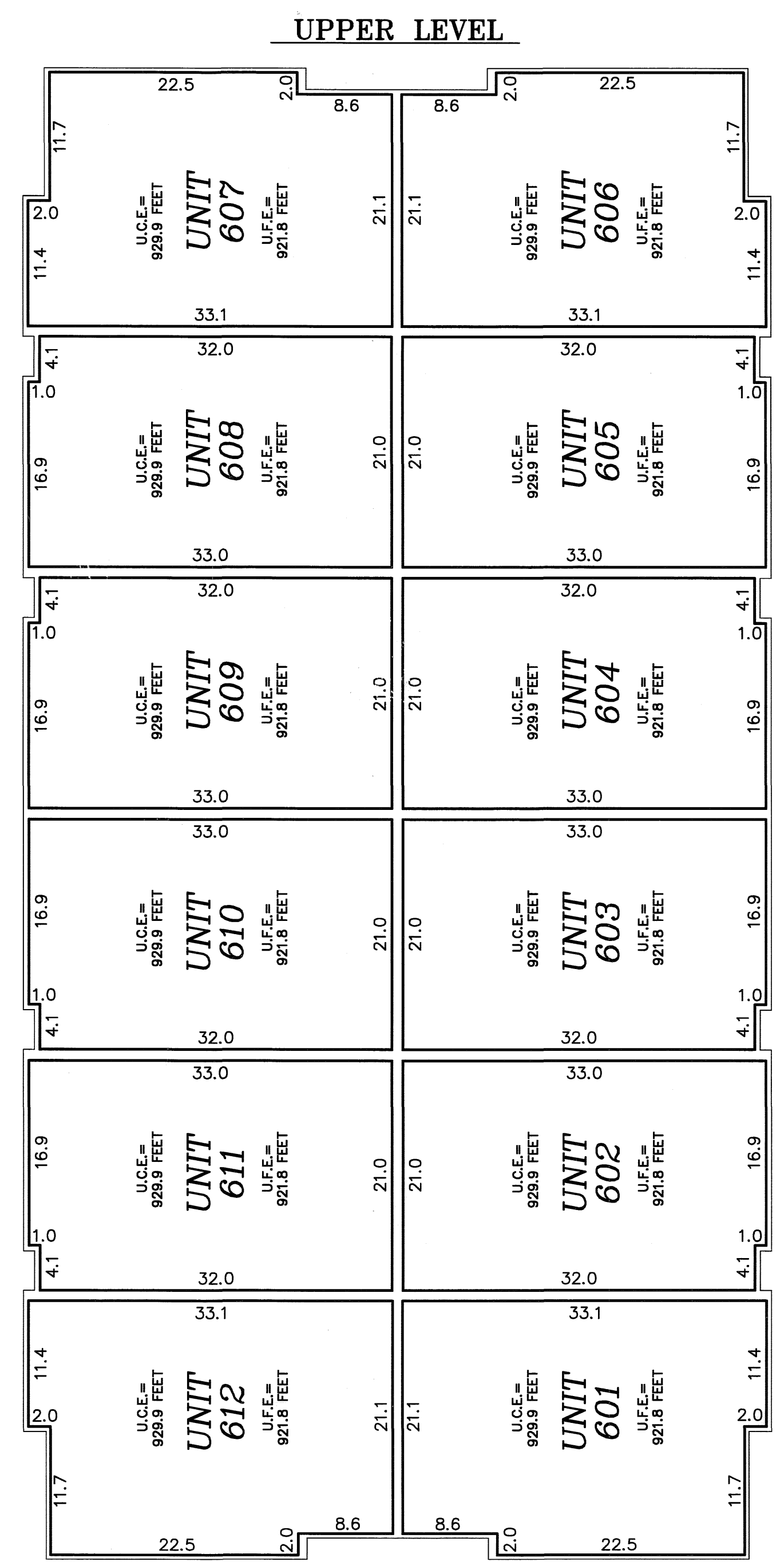
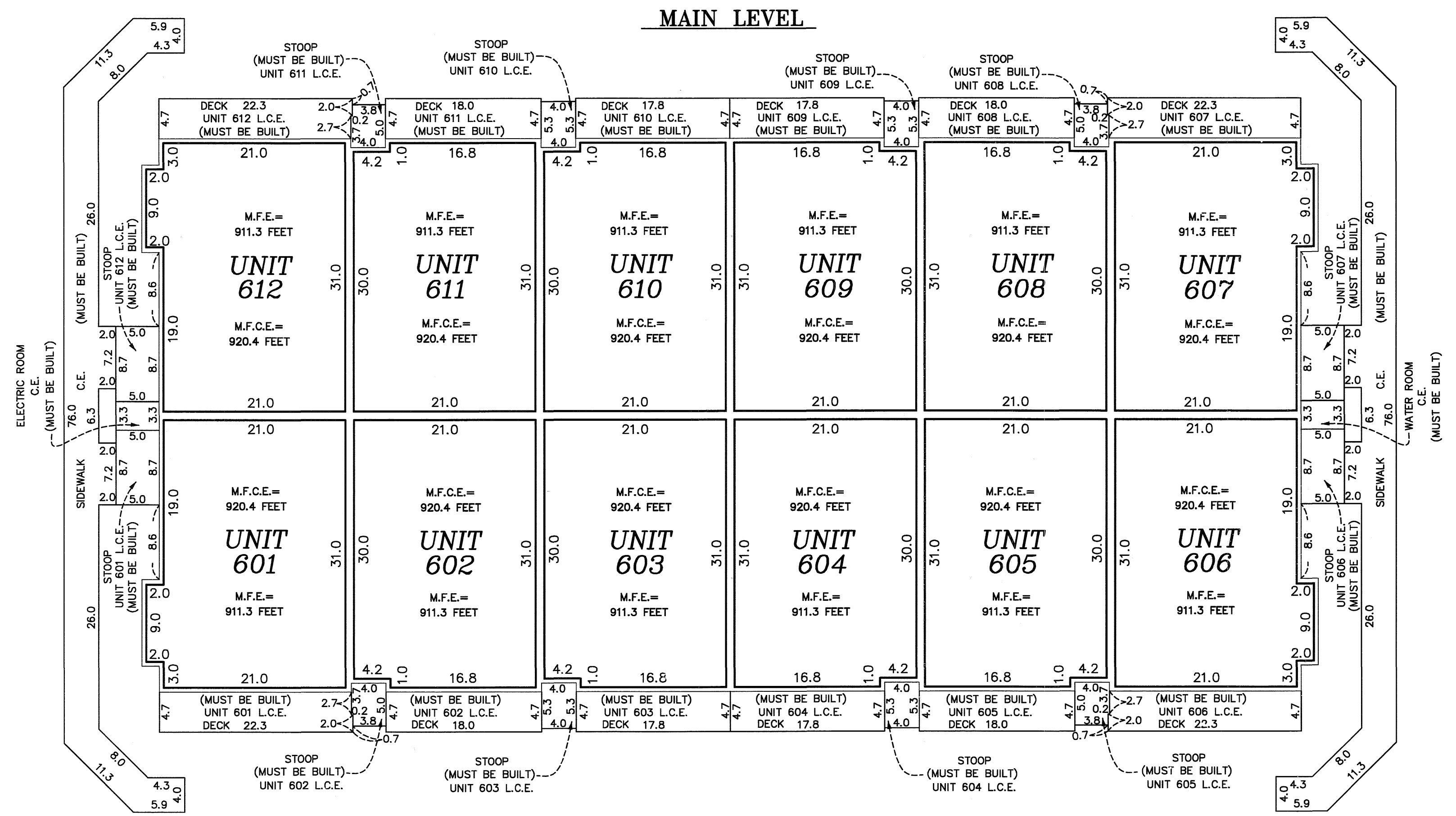
A CONDOMINIUM

TWELFTH SUPPLEMENTAL

CIC PLAT

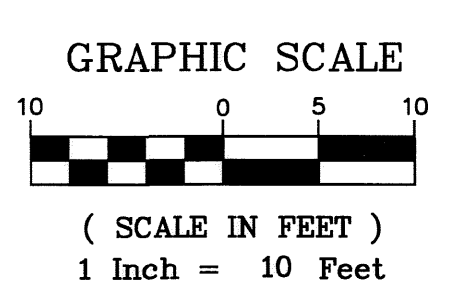
C.R. DOC. NO. 502656.003

CITY OF BLAINE
COUNTY OF ANOKA
SEC. 09, TWP. 31, RGE. 23



Elevations are referred to a benchmark as noted on the site plan on Sheet 1 of 3 Sheets and are shown in feet and tenths of a foot.

Interior dimensions shown are measured to the unfinished surface of the walls, floors and ceiling.



Limited Common Element = L.C.E.
 Common Element = C.E.
 Garage Floor Elevation = G.F.E.
 Garage Ceiling Elevation = G.C.E.
 Main Floor Elevation = M.F.E.
 Main Floor Ceiling Elevation = M.F.C.E.
 Lower Level Floor Elevation = L.L.F.E.
 Lower Level Ceiling Elevation = L.L.C.E.
 Upper Level Floor Elevation = U.L.F.E.
 Upper Level Ceiling Elevation = U.L.C.E.