

SITE PLAN

CIC NUMBER 180  
GABLES AT WATERSTONE BAY  
A CONDOMINIUM  
SEVENTH SUPPLEMENTAL  
CIC PLAT

Bk 1D of CIC pg 25

This SEVENTH SUPPLEMENTAL CIC plat is part of the SEVENTH SUPPLEMENTAL TO DECLARATION recorded as Document No. 494747.016 on this 7th day of April, 2008.

CITY OF BLAINE  
COUNTY OF ANOKA  
SEC. 09, TWP. 31, RGE. 23

I, Jason A. Bongard, hereby certify that the work was undertaken by or reviewed and approved by me for this SEVENTH SUPPLEMENTAL CIC Plat of CIC Number 180, GABLES AT WATERSTONE BAY, A CONDOMINIUM, being located upon

Lot 11, Block 3, THE LAKES OF RADISSON FOURTEENTH ADDITION, Anoka County, Minnesota, and the additional real estate is located upon the following described property designated as:

Lots 6 through 10, inclusive, Block 3; THE LAKES OF RADISSON FOURTEENTH ADDITION, Anoka County, Minnesota,

and that this CIC plat fully and accurately depicts all information required by Minnesota Statutes, Section 515B.2-110.

Dated this 14th day of February, 2008.

*Jason A. Bongard*  
Jason A. Bongard, Professional Land Surveyor  
Minnesota License No. 45775

STATE OF MINNESOTA  
COUNTY OF ANOKA

The foregoing certificate was acknowledged before me this 14th day of February, 2008, by Jason A. Bongard, a Licensed Professional Land Surveyor.

*Christopher E. Sharp*  
CHRISTOPHER E. SHARP  
Notary Public, Anoka County, Minnesota  
My Commission Expires January 31, 2010

I, JOSEPH T. RADACH, pursuant to Minnesota Statutes, Section 515B.2-101(c), do hereby certify that the structural components of the structures containing the units and the mechanical systems serving more than one unit, but not the units, are substantially completed.

Dated this 14th day of February, 2008.

*Joseph T. Radach*  
Licensed Professional Engineer  
Minnesota License No. 45889

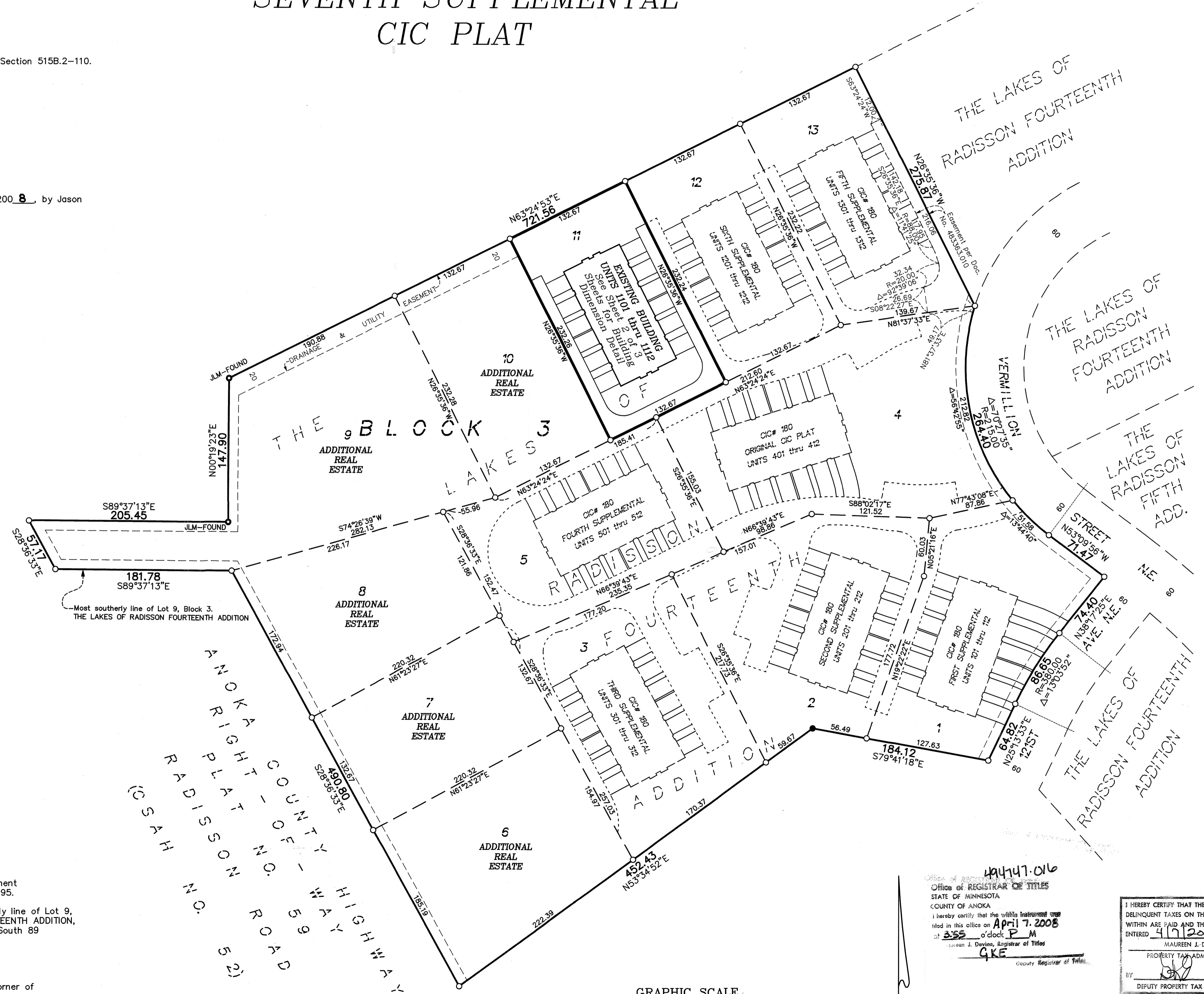
STATE OF MINNESOTA  
COUNTY OF ANOKA

The foregoing certificate was acknowledged before me this 14th day of February, 2008, by JOSEPH T. RADACH, a Licensed Professional Engineer.

*Christopher E. Sharp*  
CHRISTOPHER E. SHARP  
Notary Public, Anoka County, Minnesota  
My Commission Expires January 31, 2010

Checked and approved this 27th day of March, 2008.

Larry D. Hoium  
Anoka County Surveyor  
by Charles F. Gutzgen, Deputy



- Denotes Found Judicial Landmark
- Denotes found iron monument
- Denotes 1/2 inch by 14 inch iron monument set and marked with license number 20595.

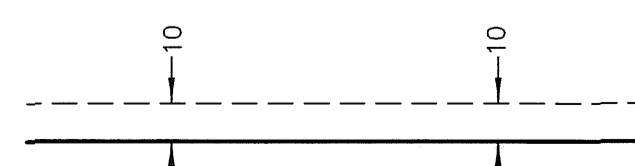
Bearings are based on the most southerly line of Lot 9, Block 3, THE LAKES OF RADISSON FOURTEENTH ADDITION, which is assumed to have a bearing of South 89 degrees 37 minutes 13 seconds East.

BENCH MARKS

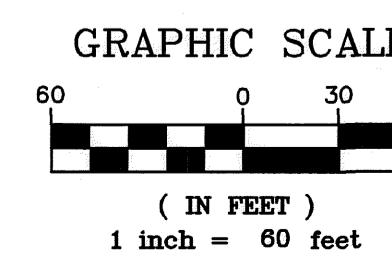
Cast Iron Monument at the Southeast Corner of Section 9, Township 31, Range 23. Elevation= 904.86 (NGVD 1929)

Cast Iron Monument at the North Quarter Corner of Section 9, Township 31, Range 23. Elevation= 903.09 (NGVD 1929)

DRAINAGE AND UTILITY EASEMENTS ARE SHOWN THUS: (NOT TO SCALE)



being 10 feet in width and adjoining right-of-way lines unless otherwise shown on this plat.



494747.016  
Office of REGISTRAR OF TITLES  
STATE OF MINNESOTA  
COUNTY OF ANOKA  
I hereby certify that the within instrument was filed in this office on April 7, 2008 at 3:55 o'clock P.M.  
Susan A. Devine, Registrar of Titles  
GKE County Registrar of Titles

I HEREBY CERTIFY THAT THE CURRENT AND DELINQUENT TAXES ON THE LANDS DESCRIBED WITHIN ARE PAID AND THE TRANSFER IS ENTERED 4/10/2008  
MAUREEN J. DEVINE  
PROPERTY TAX ADMINISTRATOR  
DEPUTY PROPERTY TAX ADMINISTRATOR

PIONEER Engineering  
CIVIL ENGINEERS LAND PLANNERS LAND SURVEYORS LANDSCAPE ARCHITECTS  
\$7800



UNIT DETAIL  
(AS-BUILT)

# CIC NUMBER 180

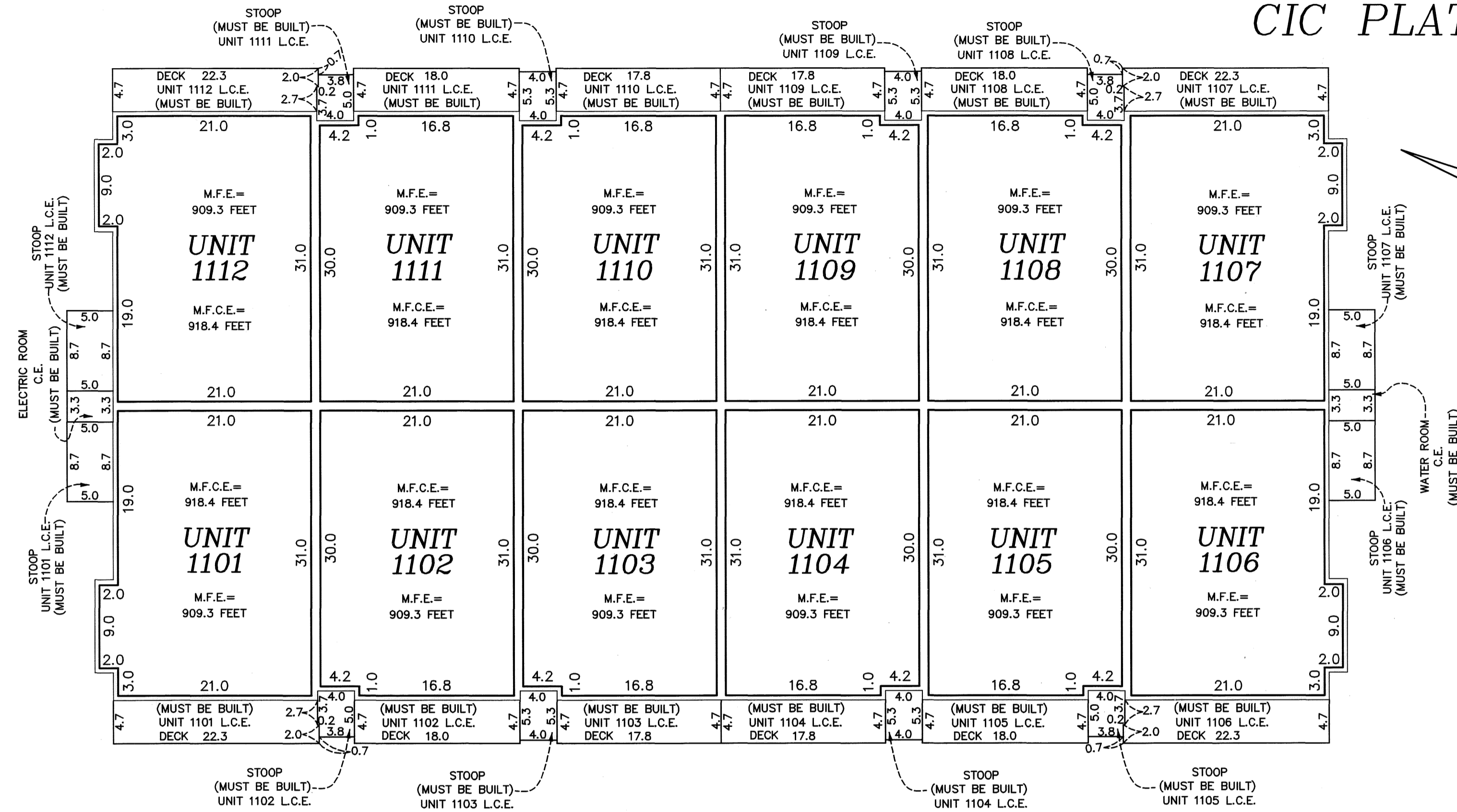
## GABLES AT WATERSTONE BAY

### A CONDOMINIUM

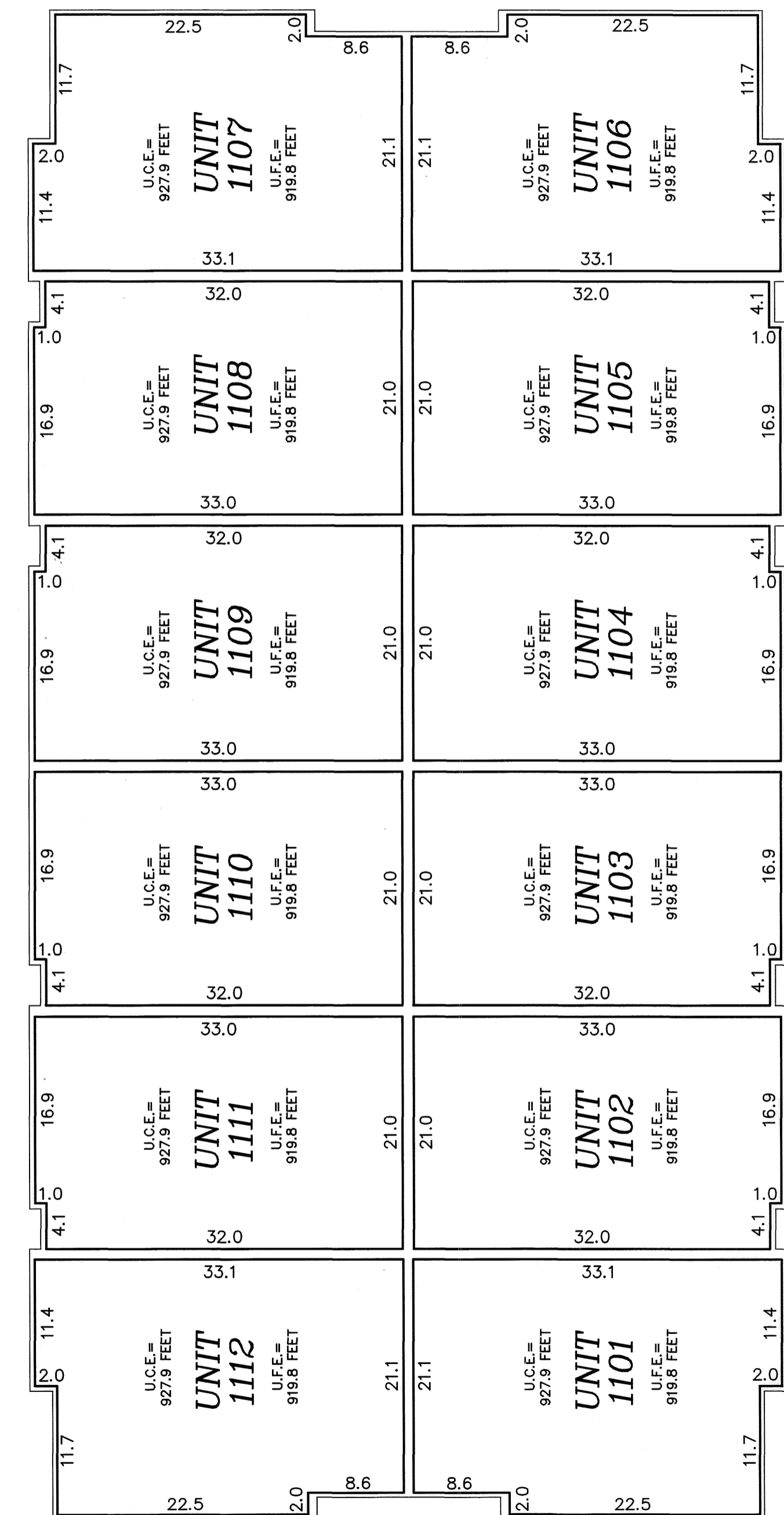
#### SEVENTH SUPPLEMENTAL

#### CIC PLAT

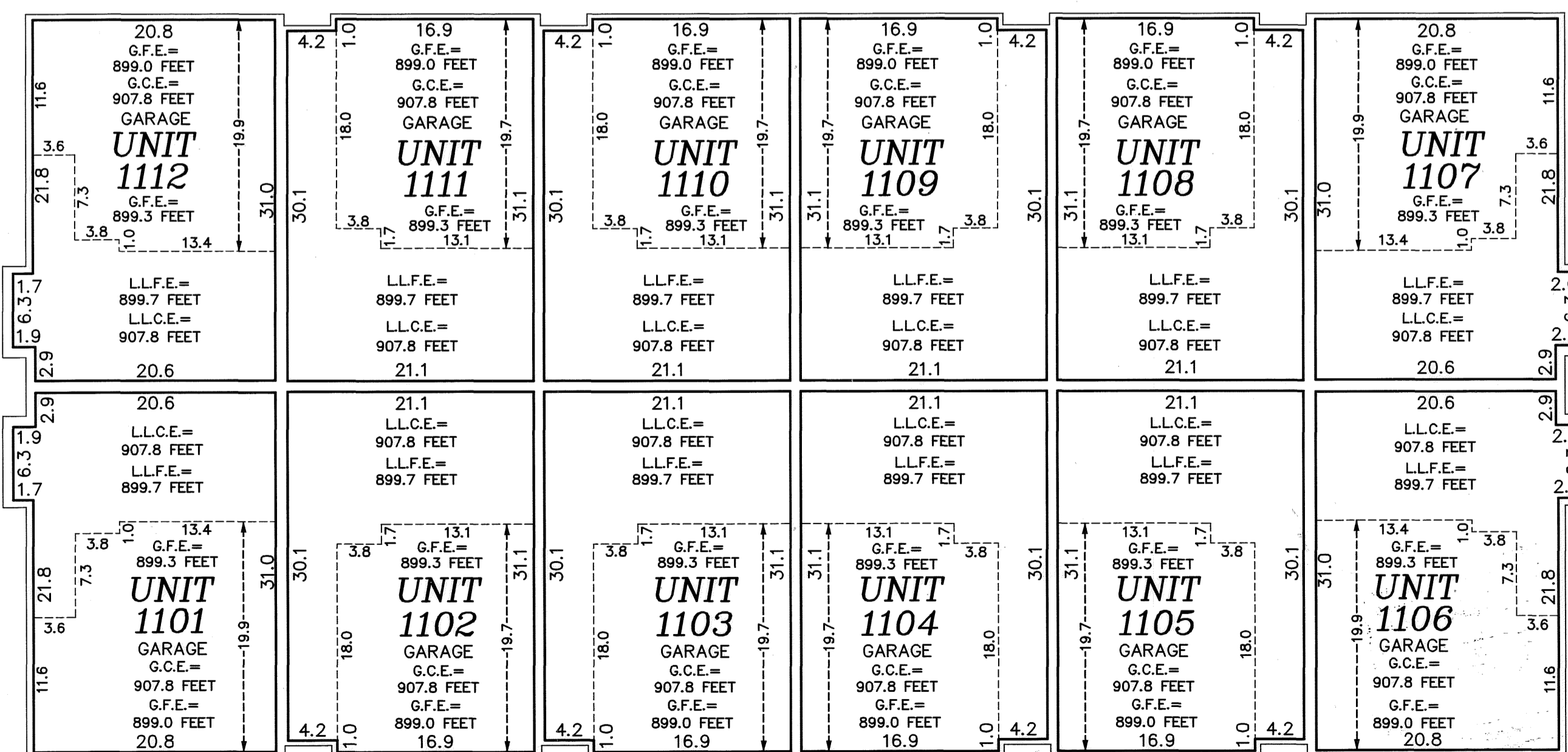
### MAIN LEVEL



### UPPER LEVEL



### LOWER LEVEL



Elevations are referred to a benchmark as noted on the site plan on Sheet 1 of 3 Sheets and are shown in feet and tenths of a foot.

Interior dimensions shown are measured to the unfinished surface of the walls, floors and ceiling.

### GRAPHIC SCALE



Limited Common Element = L.C.E.  
 Common Element = C.E.  
 Garage Floor Elevation = G.F.E.  
 Garage Ceiling Elevation = G.C.E.  
 Main Floor Elevation = M.F.E.  
 Main Floor Ceiling Elevation = M.F.C.E.  
 Lower Level Floor Elevation = L.L.F.E.  
 Lower Level Ceiling Elevation = L.L.C.E.  
 Upper Level Floor Elevation = U.L.F.E.  
 Upper Level Ceiling Elevation = U.L.C.E.