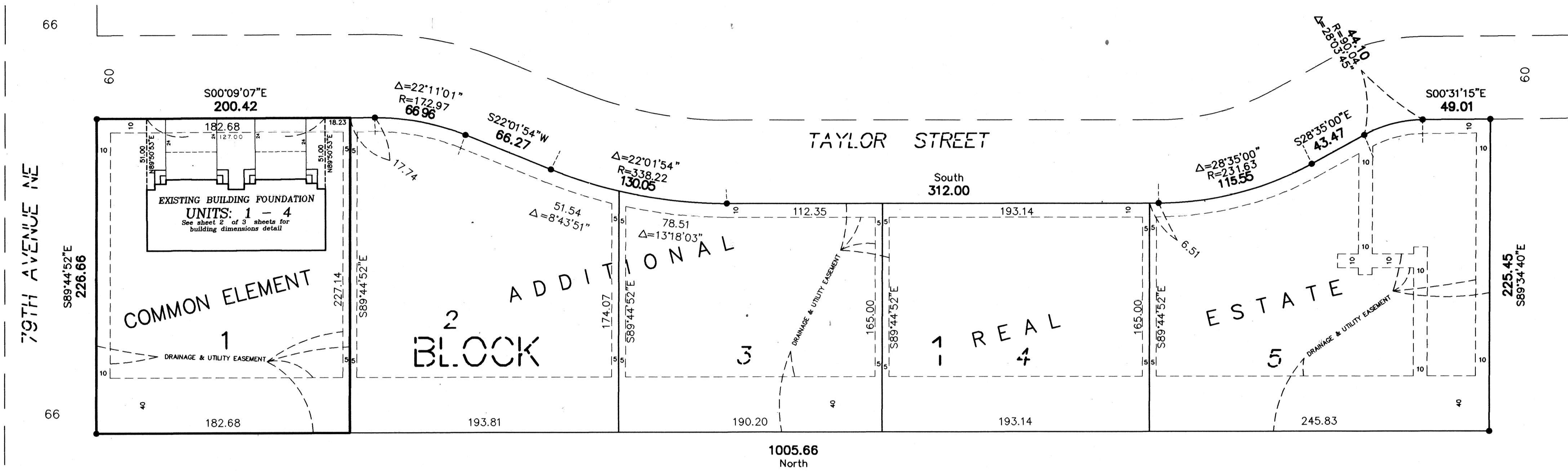


CIC NUMBER 19 PARK HEIGHTS TOWNHOMES

CONDOMINIUM PLAT
SITE PLAN (AS BUILT)

This CIC plat is part of the declaration recorded as Document No. 1245829 on the day of Oct 10 1996.



I, Robert B. Sikich, hereby certify that the work was undertaken by or reviewed and approved by me for this CIC Plat of CIC Number 19, PARK HEIGHTS TOWNHOMES being located upon
 Lot 1, Block 1, PARK HEIGHTS TOWNHOMES, Anoka County, Minnesota
 and the additional real estate is located upon the following described property designated as:
 Lots 2, 3, 4 and 5 Block 1, PARK HEIGHTS TOWNHOMES, Anoka County, Minnesota
 fully and accurately depicts all information required by Minnesota Statutes, Section 515 B. 2-110.
 Dated this 23rd day of September, 19 96
Robert B. Sikich
 Robert B. Sikich, Land Surveyor
 Minnesota License No. 14891

STATE OF MINNESOTA
 COUNTY OF ANOKA
 The foregoing certificate was acknowledged before me this 23rd day of SEPTEMBER, 19 96, by Robert B. Sikich, a Licensed Professional Land Surveyor.

Howard W. Fodders
 Notary Public, Sherburne County, Minnesota
 My Commission Expires Jan 31, 2000

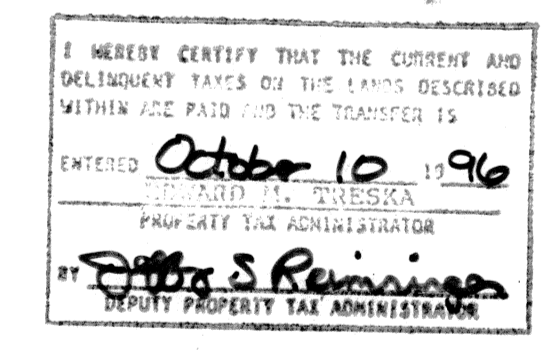
I, Michael J. Wilms, pursuant to Minnesota Statutes, Section 515B.2-101(c), do hereby certify that all the units and all structural components and mechanical systems of all buildings containing or comprising any units hereby created, are substantially completed.
 Dated this 3 day of OCTOBER, 19 96

Michael J. Wilms
 Registered Professional Architect
 Minnesota Registration No. 16390

STATE OF MINNESOTA
 COUNTY OF HENNING
 The foregoing certificate was acknowledged before me this 3rd day of OCTOBER, 19 96, by Michael J. Wilms, Registered Professional Architect.

Notary Public, Hennepin County, Minnesota
 My Commission Expires 11/21/2000

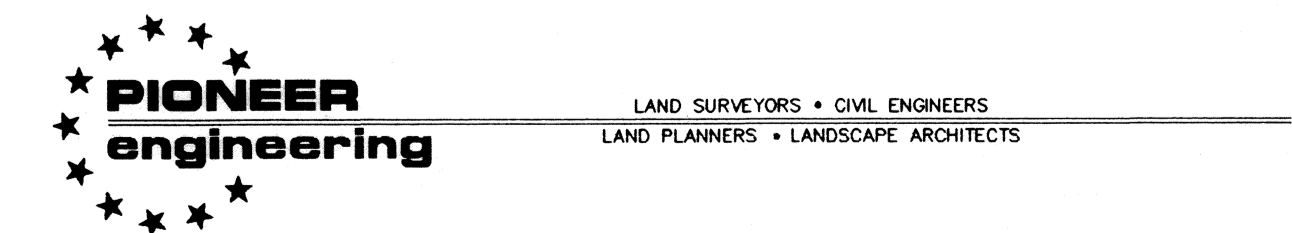
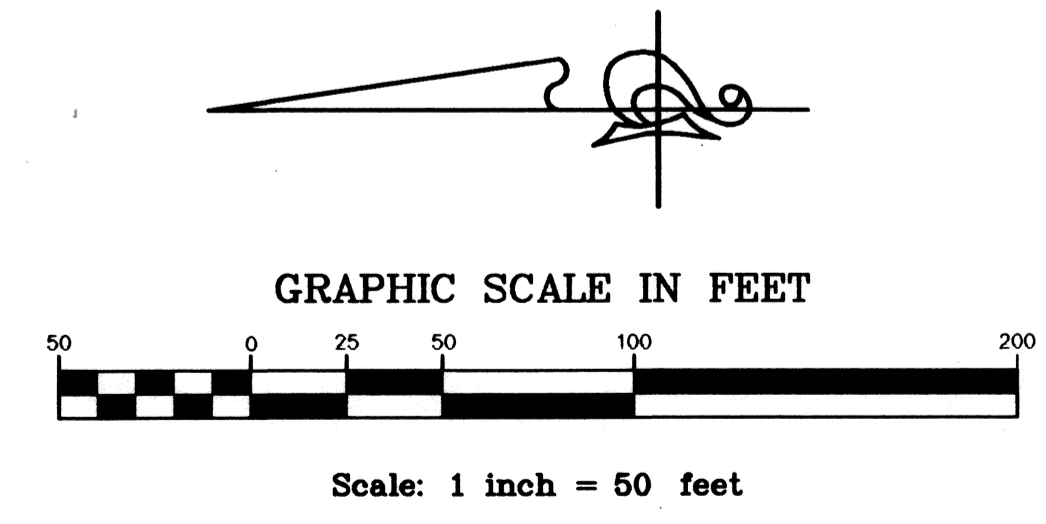
Checked and approved this 10th day of OCTOBER, 19 96
MERLYN D. ANDERSON by Larry D. [Signature]
 Anoka County Surveyor deputy



1245829
 10th of Oct. 96
 2:15 P.
 3 of CIC 3
Edward M. Traska
 GKE

BENCHMARK:
 Top nut of hydrant at the intersection of Taylor Street and 79th Avenue Northeast
 Elevation = 908.78 feet (NGVD 1929)

● Denotes Found Iron Monument
 The north line of Lot 1, Block 1, PARK HEIGHTS TOWNHOMES has an assumed bearing of S 89°44'52" E.
 All Drainage and Utility Easements shown were dedicated in the plat of PARK HEIGHTS TOWNHOMES.

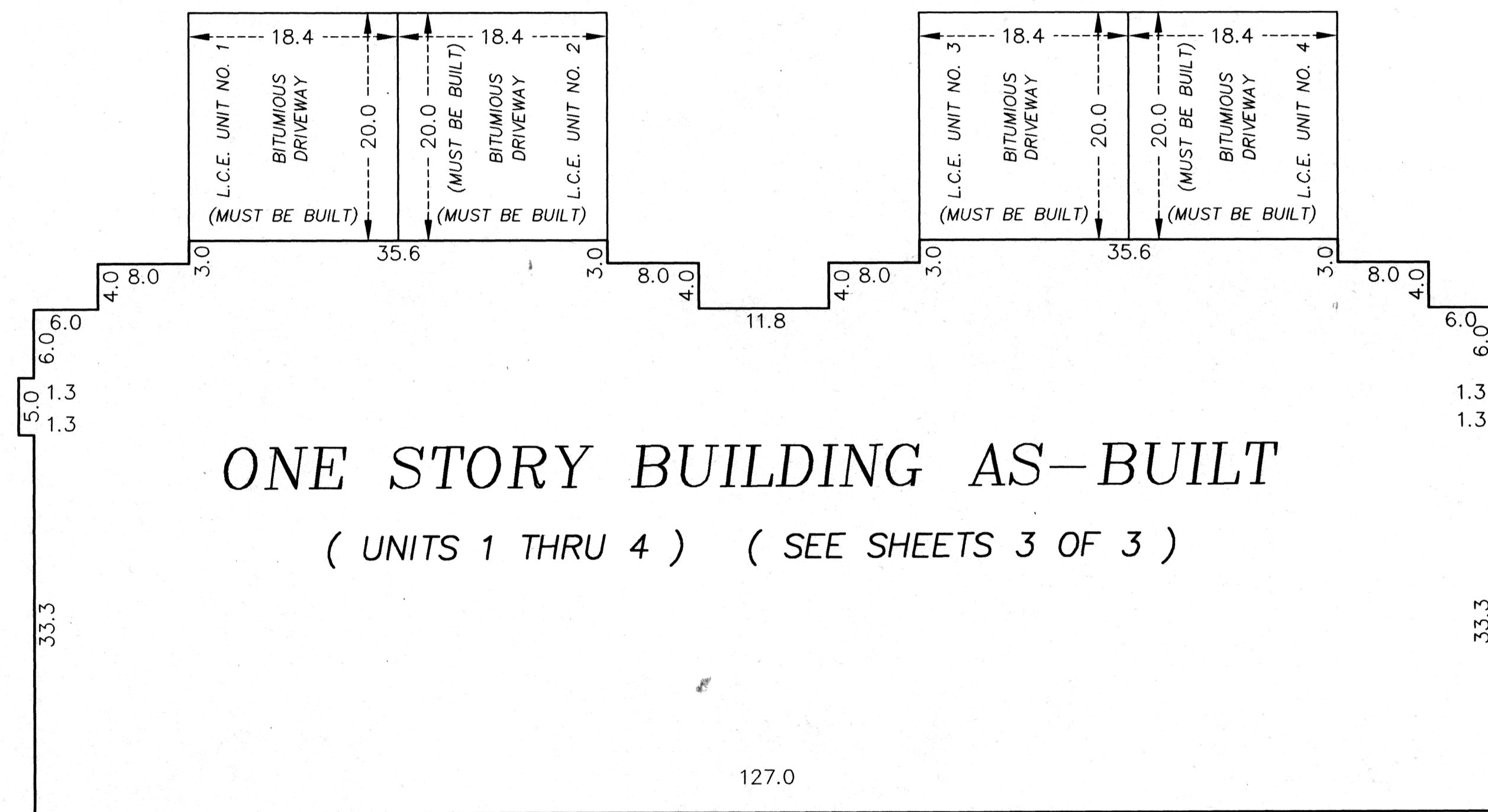


Receipt No.: 96071667 # 256.50

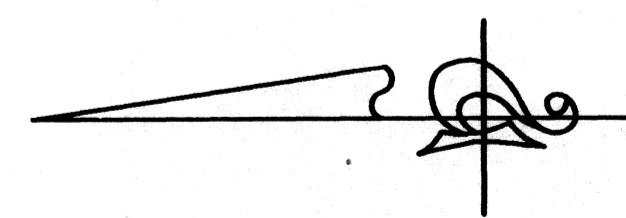
CIC NUMBER 19 PARK HEIGHTS TOWNHOMES CONDOMINIUM PLAT

DETAIL

C O M M O N

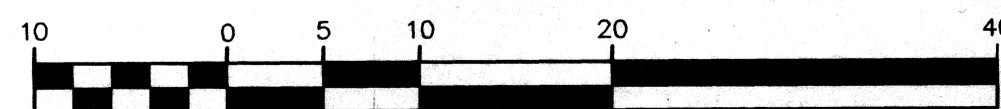


E L E M E N T

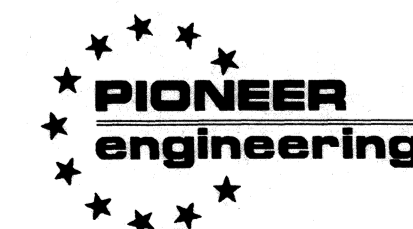


L.C.E. Denotes Limited Common Element

GRAPHIC SCALE IN FEET



Scale: 1 inch = 10 feet



LAND SURVEYORS • CIVIL ENGINEERS
LAND PLANNERS • LANDSCAPE ARCHITECTS

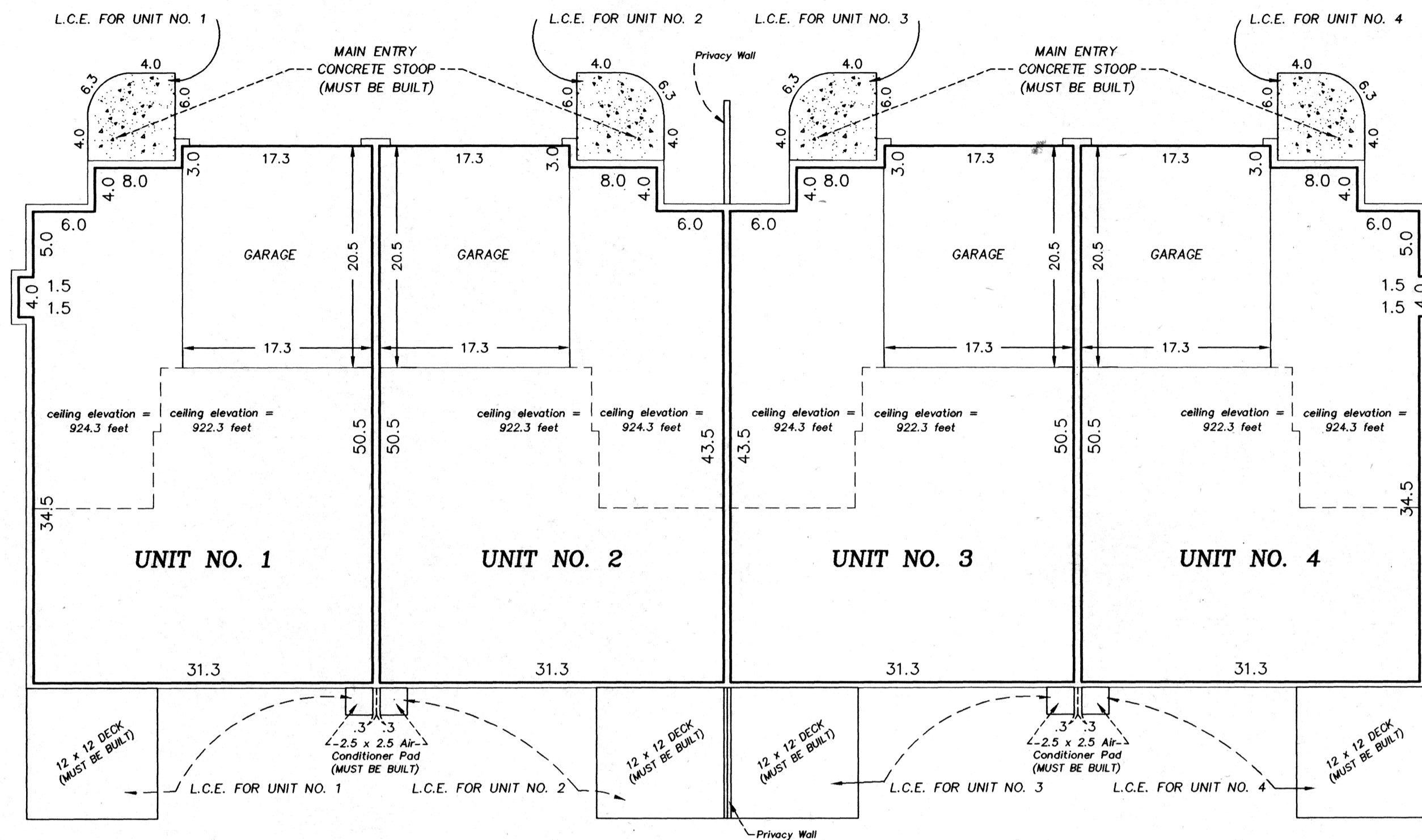
CIC NUMBER 19

PARK HEIGHTS TOWNHOMES

CONDOMINIUM PLAT

FLOOR PLANS

MAIN LEVEL



<p>UNIT NO. 1</p> <p>MAIN LEVEL = 1521 sq. ft. BASEMENT LEVEL = 1063 sq. ft. TOTAL = 2584 sq. ft.</p>	<p>UNIT NO. 3</p> <p>MAIN LEVEL = 1521 sq. ft. BASEMENT LEVEL = 1063 sq. ft. TOTAL = 2584 sq. ft.</p>
<p>UNIT NO. 2</p> <p>MAIN LEVEL = 1521 sq. ft. BASEMENT LEVEL = 1063 sq. ft. TOTAL = 2584 sq. ft.</p>	<p>UNIT NO. 4</p> <p>MAIN LEVEL = 1521 sq. ft. BASEMENT LEVEL = 1063 sq. ft. TOTAL = 2584 sq. ft.</p>

Interior Dimensions shown are measured to the unfinished surface of the walls, floors and ceilings

L.C.E. Denotes Limited Common Element

Elevations are referred to Benchmark as noted on site plan and are shown in feet and tenths of a foot

All units main level floor elevations = 914.3 feet

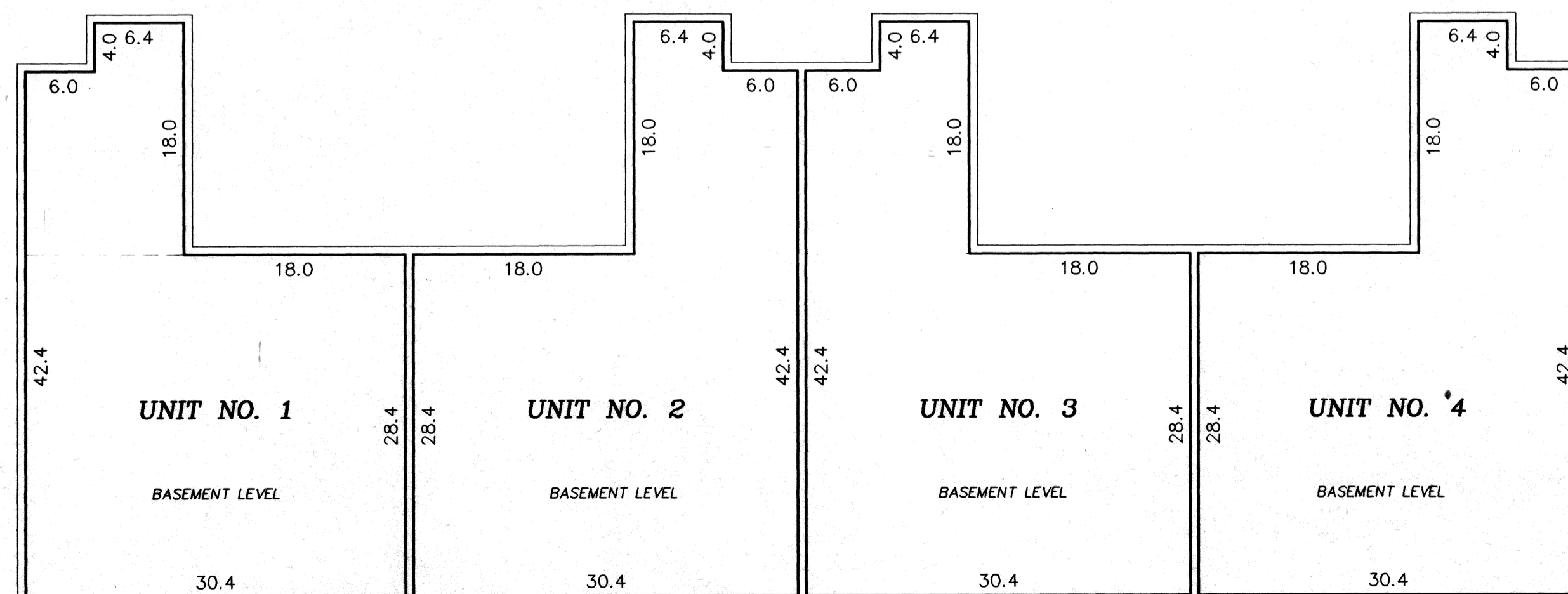
All units main level ceiling elevations vary from 922.3 feet to 924.3 feet

All units garage floor elevations = 913.5 feet

All units basement level floor elevations = 904.4 feet

All units basement level ceiling elevations = 913.1 feet

BASEMENT LEVEL



The privacy fence and wall are Common Elements and must be built.

