

OFFICIAL PLAT

1973095.001  
OFFICE OF COUNTY RECORDER  
STATE OF MINNESOTA, COUNTY OF ANOKA  
I hereby certify that the within instrument was filed in this office to record on the 18 Feb. A.D. 2005 at 3:59 o'clock P.M. and was duly recorded in book 7 CIC page 49  
Maureen J. Denie  
County Recorder  
LBS

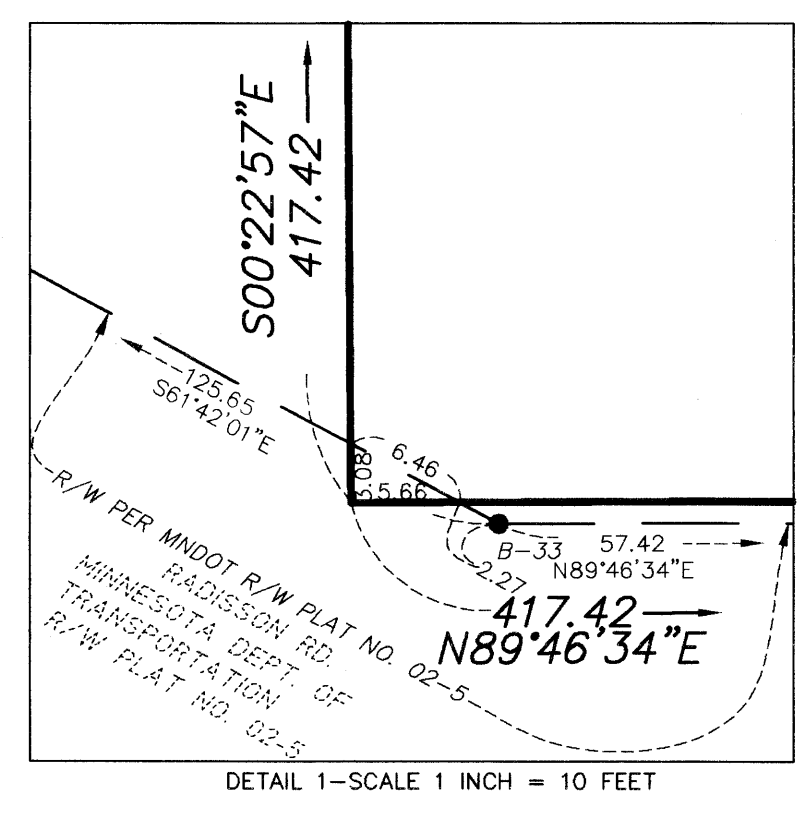
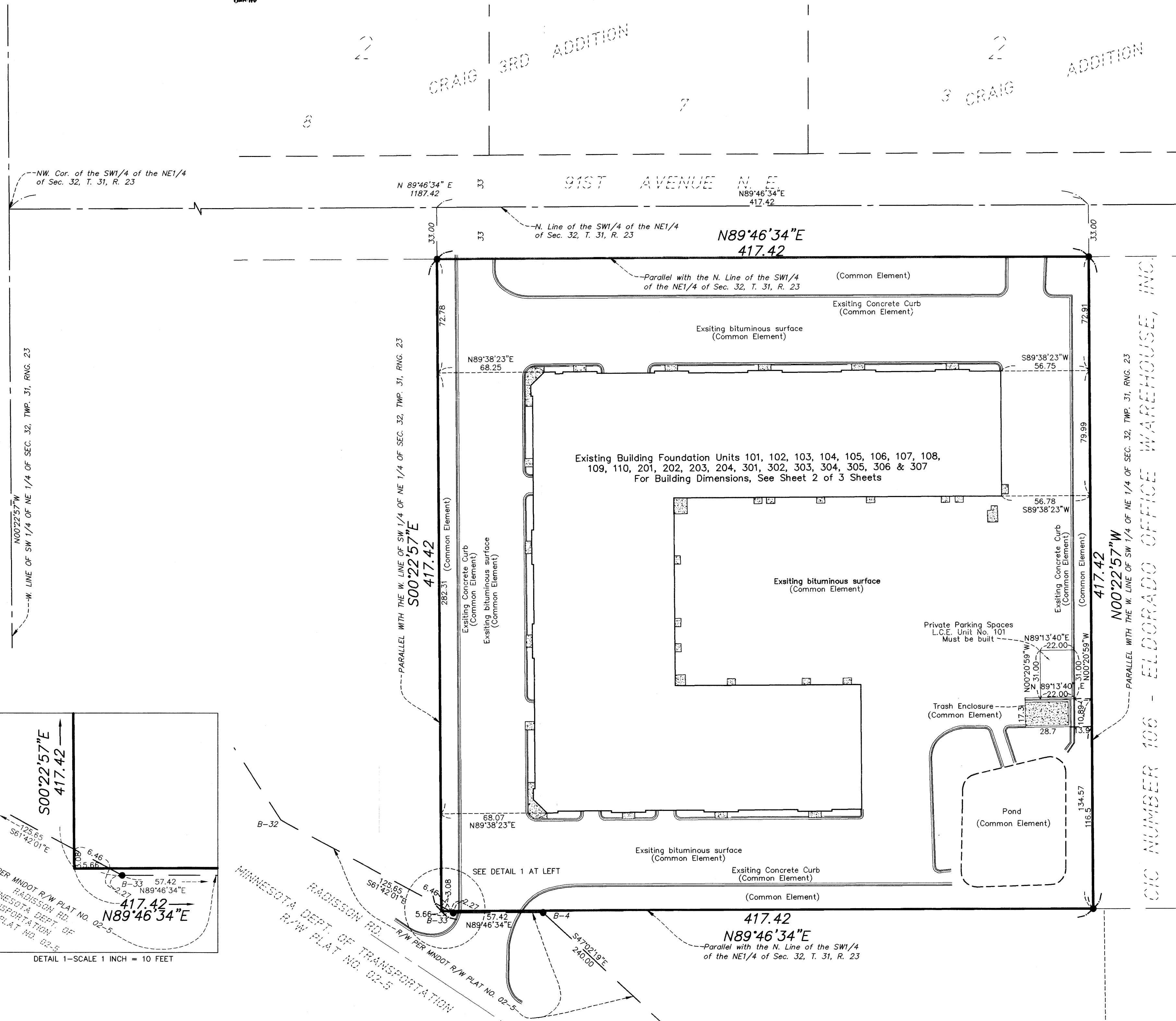
CIC NUMBER 200  
CORNERSTONE OFFICE WAREHOUSE, INC., A CONDOMINIUM  
CIC PLAT

BOOK #7 CIC PAGE 49

This CIC plat has been recorded as part of the declaration filed as document number \_\_\_\_\_ on the \_\_\_\_\_ day of \_\_\_\_\_, 20\_\_

City of Blaine  
County of Anoka  
Sec. 32, T. 31, R. 23

SITE PLAN  
(As-Built)



I, Jeffrey N. Caine, do hereby certify that the work was undertaken by or reviewed and approved by me for this CIC Plat of CIC NUMBER 200, CORNERSTONE OFFICE WAREHOUSE, INC., A CONDOMINIUM, being located upon:  
That part of the Southwest Quarter of the Northeast Quarter of Section 32, Township 31, Range 23, described as commencing at a point on the North line of said Southwest Quarter of the Northeast Quarter, said point being 1187.42 feet east of the Northwest corner of said Southwest Quarter of the Northeast Quarter; thence south, parallel with the West line of said Southwest Quarter of the Northeast Quarter a distance of 33.00 feet to the actual point of beginning of the land to be described; thence continuing south along said parallel line a distance of 417.42 feet; thence west parallel with the North line of said Southwest Quarter of the Northeast Quarter a distance of 417.42 feet; thence north parallel with the West line of said Southwest Quarter of the Northeast Quarter a distance of 417.42 feet, more or less, to a point 33.00 feet south of the North line of said Southwest Quarter of the Northeast Quarter; thence east along a line parallel with the North line of said Southwest Quarter of the Northeast Quarter to the actual point of beginning, Anoka County, Minnesota.

Fully and accurately depicts all information required by Minnesota Statutes, Section 515B.2-110.  
Dated this 25th day of January, 2005.

Jeffrey N. Caine  
Land Surveyor  
Minnesota License No. 12251

STATE OF MINNESOTA  
COUNTY OF ANOKA

The foregoing instrument was acknowledged before me this 25th day of January 2005, by Jeffrey N. Caine, a Licensed Land Surveyor.

Gill McKent  
Notary Public, Anoka County, Minnesota  
My Commission Expires 01-31-05

I, Leon P. Opatz, pursuant to Minnesota Statutes, Section 515B.2-101(c), do hereby certify that all structural components and mechanical systems of all buildings containing or comprising any units thereby created are substantially completed.

Dated this 25th day of January, 2005.

Leon P. Opatz  
Registered Engineer  
Minnesota Registration No. 21810

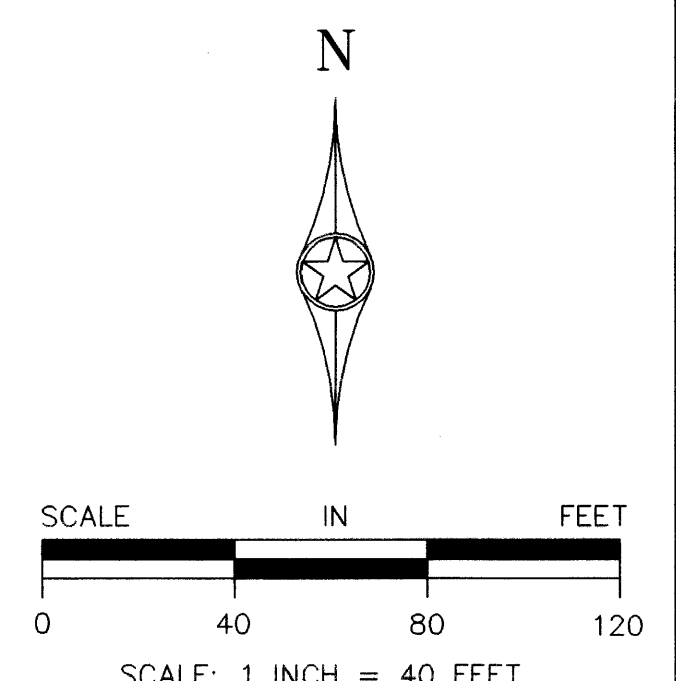
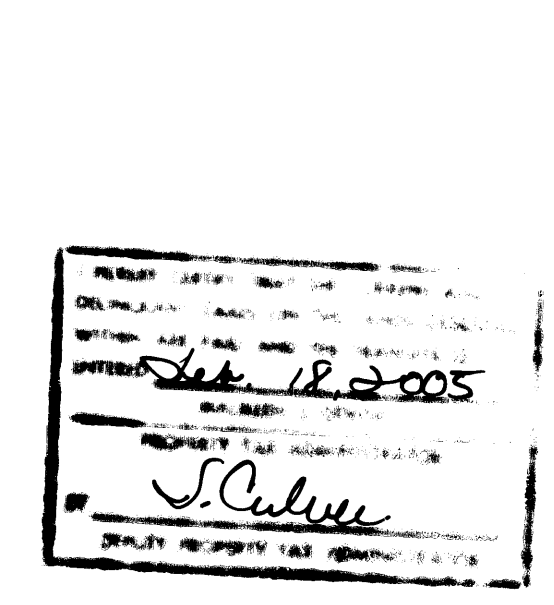
STATE OF MINNESOTA  
COUNTY OF ANOKA

The foregoing instrument was acknowledged before me this 25th day of January 2005, by Leon P. Opatz, a Registered Engineer.

Gill McKent  
Notary Public, Anoka County, Minnesota  
My Commission Expires 01-31-05

Pursuant to Minnesota Statutes, Chapter 389.09, Subd. 2, this CIC Plat has been reviewed and is approved this 18th day of FEBRUARY, 2005.

Jerry D. Glin  
Anoka County Surveyor



BENCH MARK

Top Nut Hydrant on S. side of 91st Avenue N.E. at center line of Davenport Street extended. Elevation = 913.11 feet (N.G.V.D. 1929)

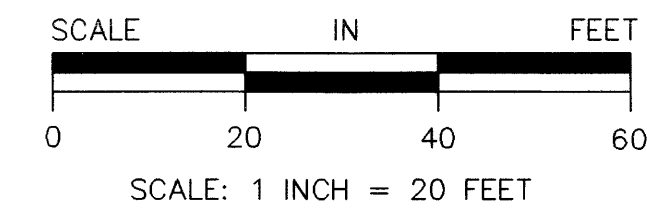
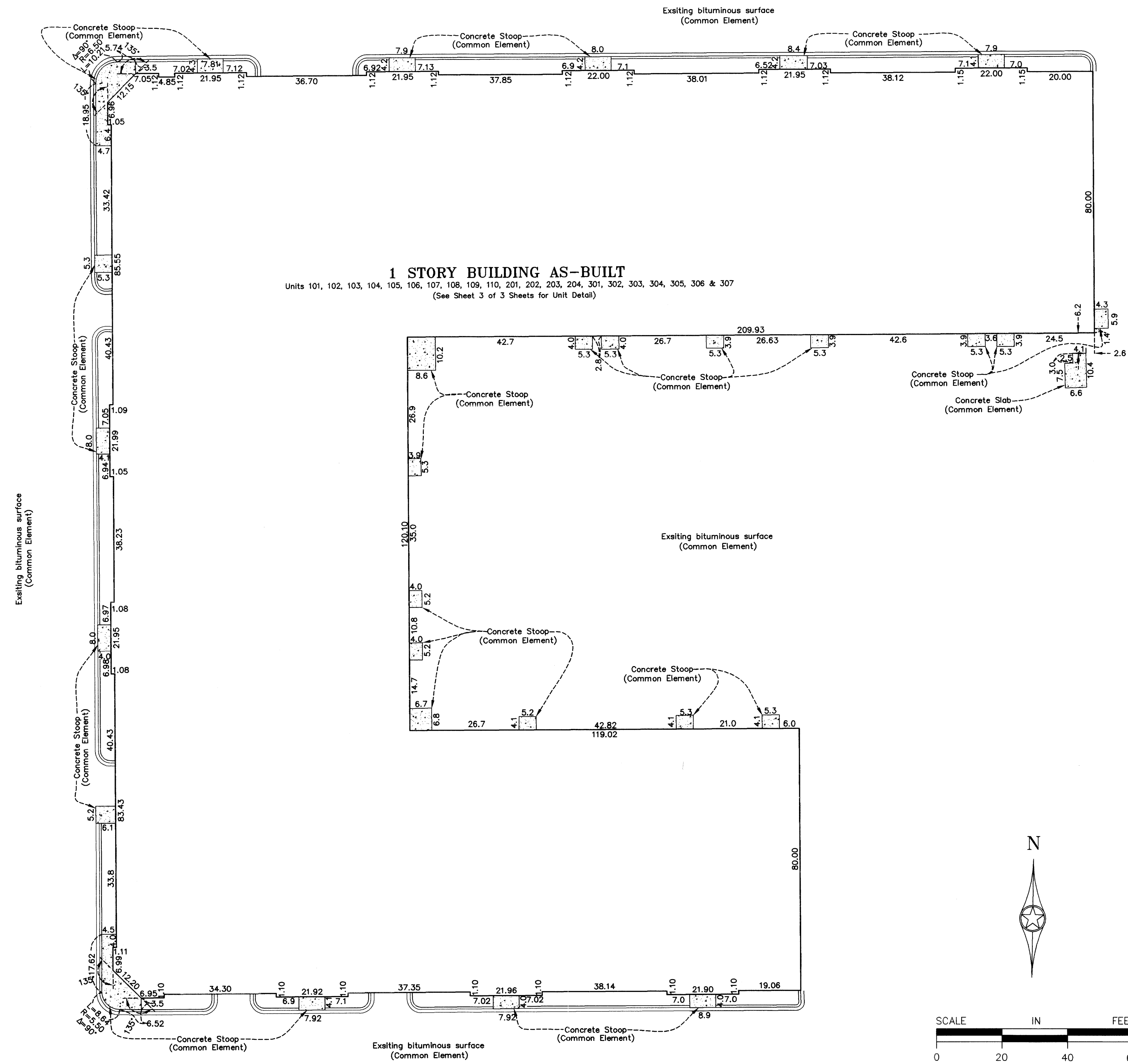


NOTE: FOR THE PURPOSES OF THIS PLAT, THE NORTH LINE OF THE SW1/4 OF NE1/4 OF SEC. 32, T. 31, R. 23 IS ASSUMED TO BEAR N 89°46'34"E.  
3747.50  
RLK - Kuusisto, Ltd.  
1321 Andover Blvd. NE Suite 114 Ham Lake, MN 55304  
Hibbing, Ham Lake, Minnetonka, Twin Ports  
Phone: (763) 434-7646

# CIC NUMBER 200

## CORNERSTONE OFFICE WAREHOUSE, INC., A CONDOMINIUM

### CIC PLAT



**RLK - Kuusisto, Ltd.**  
1321 Andover Blvd. NE Suite 114 Ham Lake, MN 55304  
Hibbing, Ham Lake, Minnetonka, Twin Ports  
Phone: (763) 434-7646

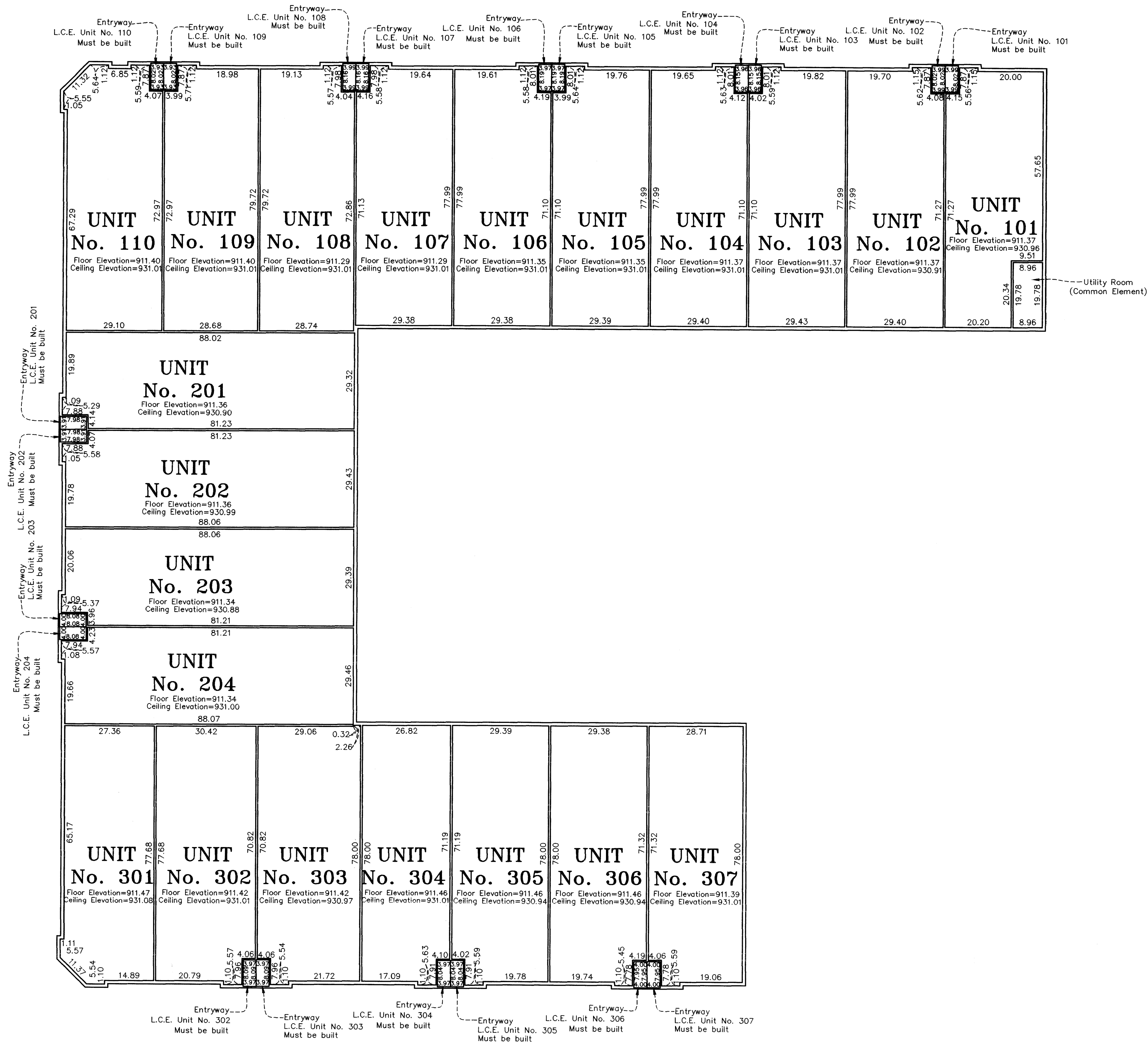
# CIC NUMBER 200

## CORNERSTONE OFFICE WAREHOUSE, INC., A CONDOMINIUM

### CIC PLAT

UNIT DETAIL

MAIN LEVEL



L.C.E. Denotes Limited Common Element

Interior dimensions shown are measured to the unfinished surface of the walls, floors and ceilings, and are shown in feet and hundredths of a foot.

Elevations are referred to Benchmark as noted on site plan and are shown in feet and hundredths of a foot.

SCALE: 1 INCH = 20 FEET



**RLK - Kuusisto, Ltd.**  
1321 Andover Blvd. NE Suite 114 Ham Lake, MN 55304  
Hibbing, Ham Lake, Minnetonka, Twin Ports  
Phone: (763) 434-7646