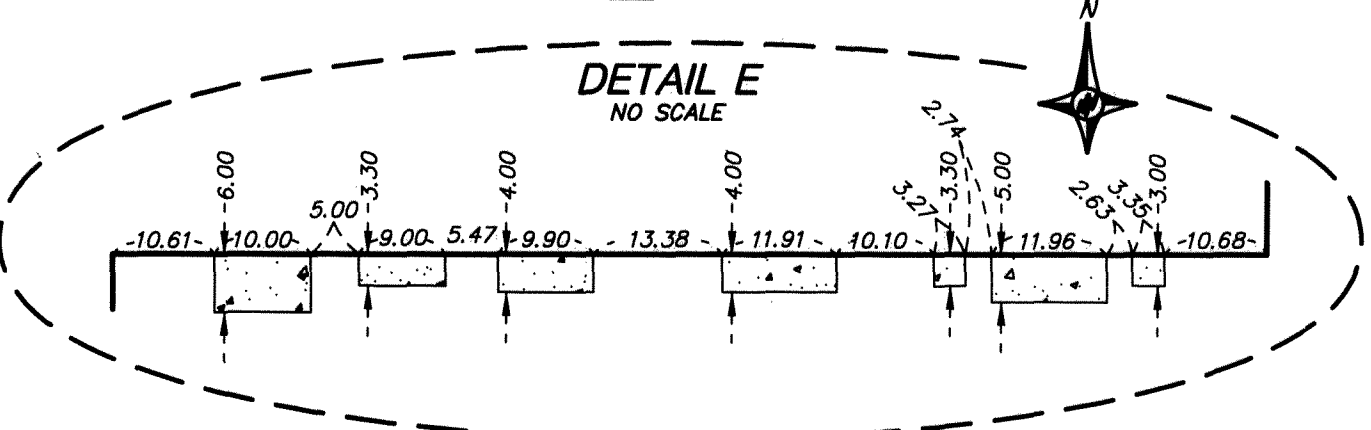
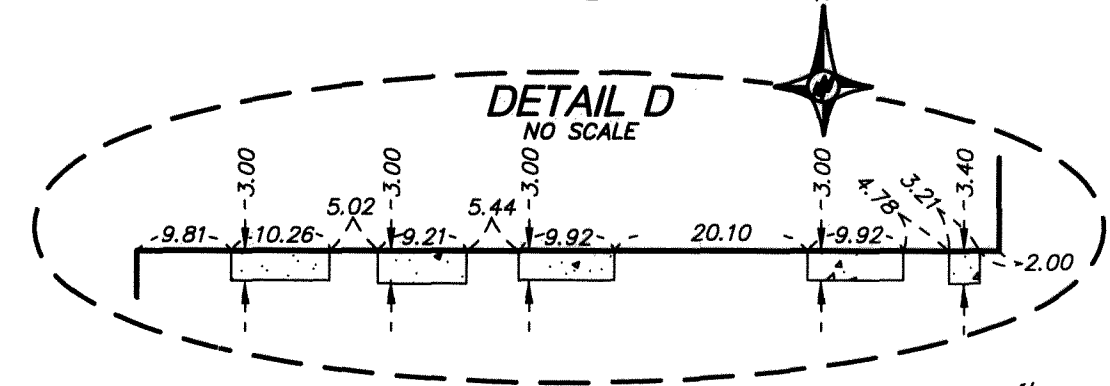
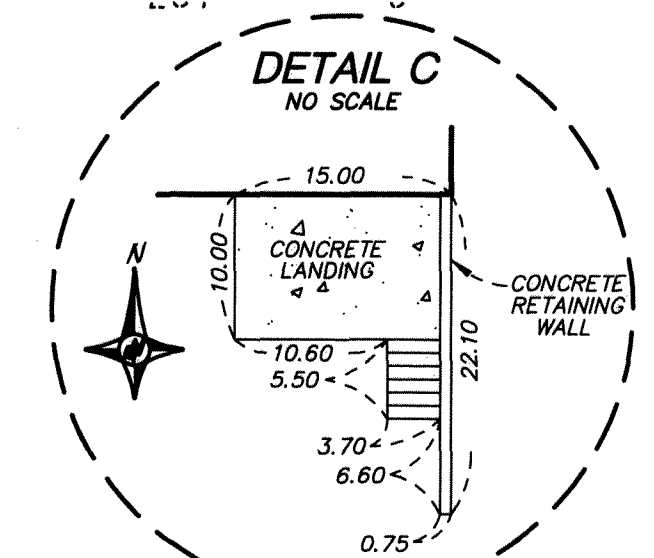
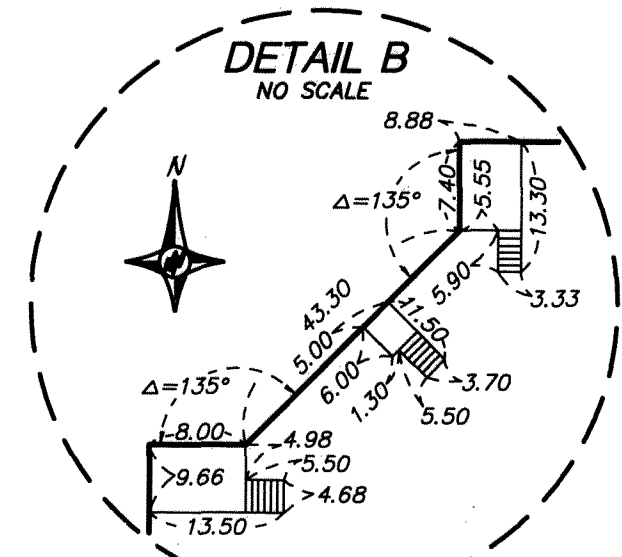
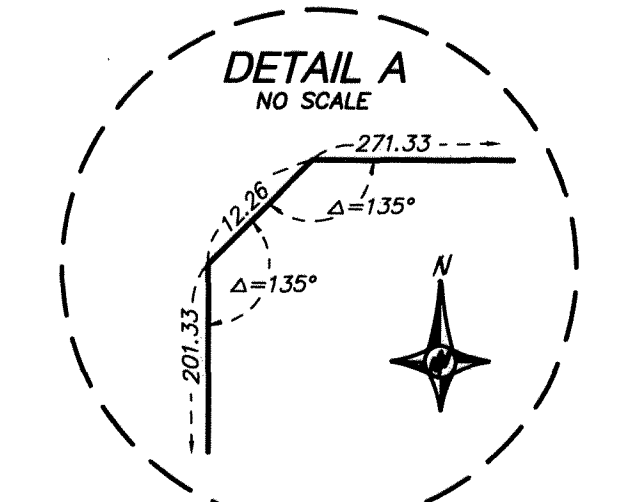
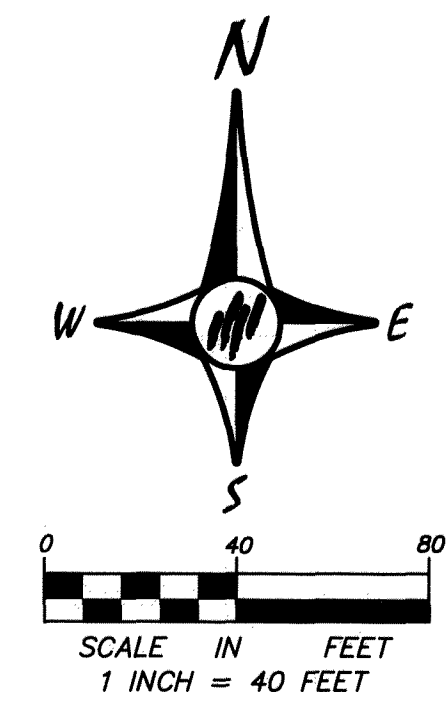
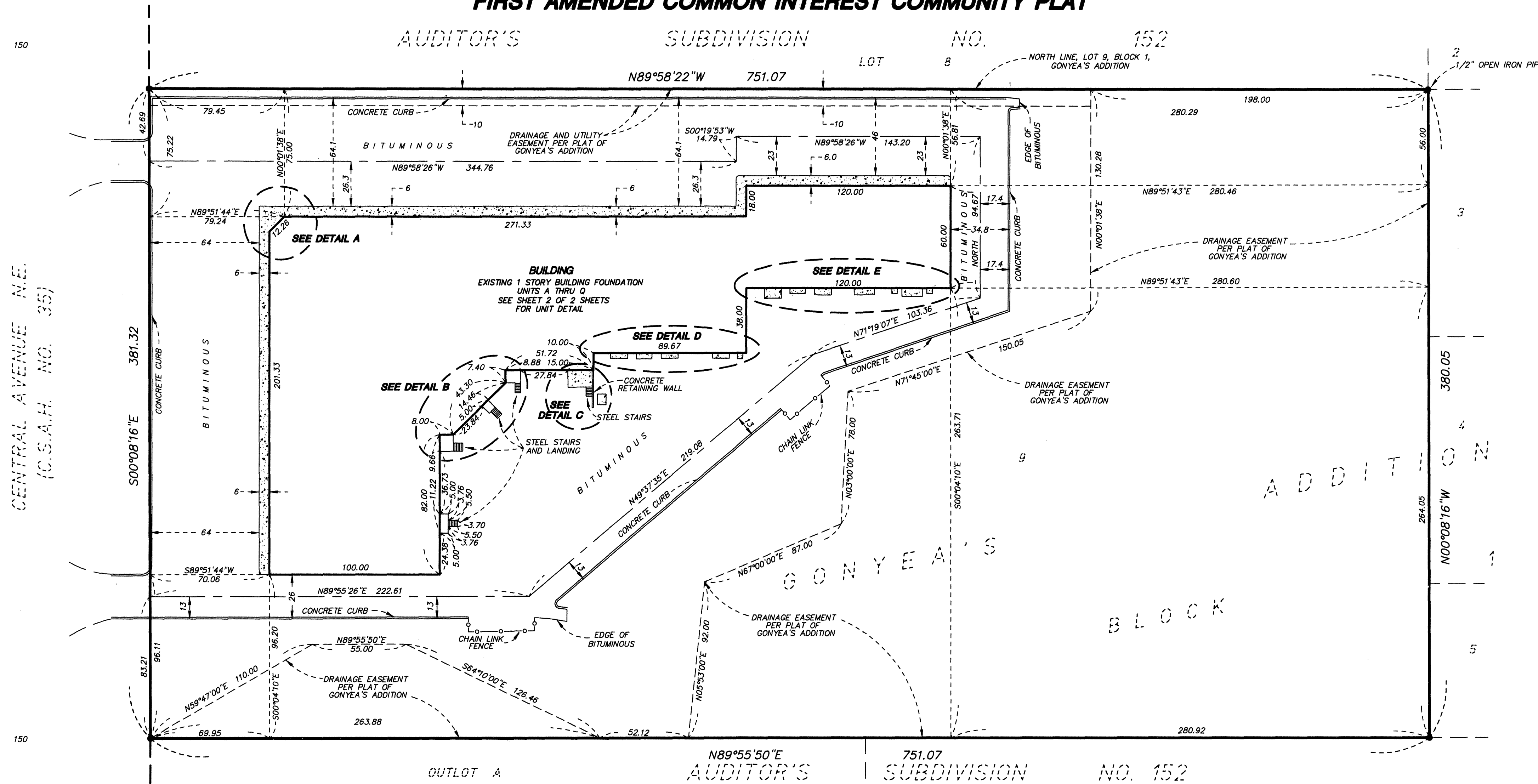


COMMON INTEREST COMMUNITY NUMBER 207
SPRING LAKE PARK NUMBER TWO CONDOMINIUMS
A CONDOMINIUM
FIRST AMENDED COMMON INTEREST COMMUNITY PLAT

Bk 11 of CIC pg 32

THIS FIRST AMENDED COMMON INTEREST COMMUNITY PLAT IS PART OF THE DECLARATION RECORDED AS DOCUMENT NO. 2107121.001 ON THIS 2nd DAY OF JUNE 2015.

CITY OF SPRING LAKE PARK
COUNTY OF ANOKA
SEC. 1, T. 30, R. 24



I, Kyle J. Roddy, do hereby certify that the work was undertaken by or reviewed and approved by me for this FIRST AMENDED CIC PLAT of COMMON INTEREST COMMUNITY NUMBER 207, A CONDOMINIUM, SPRING LAKE PARK NUMBER TWO CONDOMINIUMS, being located upon:

Units 1 and J, COMMON INTEREST COMMUNITY NUMBER 207, A CONDOMINIUM, SPRING LAKE PARK NUMBER TWO CONDOMINIUMS, according to the recorded Plat thereof, Anoka County, Minnesota.

And that this CIC plat fully and accurately depicts all information required by Minnesota Statutes, Section 515B.2-110(c).

Dated this 27th day of May, 2015.

Kyle J. Roddy, Land Surveyor
Minnesota License No. 42627

State of Minnesota
County of Isanti

The foregoing instrument was acknowledged before me this 27th day of May, 2015, by Kyle J. Roddy.

Christie S. Hanson
Christie S. Hanson

Notary Public, Isanti County, Minnesota
My commission expires January 31, 2020

ANOKA COUNTY SURVEYOR

Pursuant to Minnesota Statutes, Chapter 389.09, Subd. 2, this CIC Plat has been reviewed and approved this 2nd day of JUNE, 2015.

Larry D. Erdm, Anoka County Surveyor

COUNTY AUDITOR/TREASURER
Pursuant to Minnesota Statutes, Section 515B.1-116, taxes payable in the year 2015 on the land hereinbefore described have been paid. Also, pursuant to Minnesota Statutes, Section 272.12, there are no delinquent taxes and transfer entered this 2nd day of June, 2015.

Jonell M. Sawyer
Property Tax Administrator
By: Nick White, Deputy

COUNTY RECORDER/REGISTRAR OF TITLES
County of Anoka, State of Minnesota

I hereby certify that this plat of FIRST AMENDED CIC PLAT of COMMON INTEREST COMMUNITY NUMBER 207, A CONDOMINIUM, SPRING LAKE PARK NUMBER TWO CONDOMINIUMS, was filed in the office of the County Recorder/Registrar of Titles for public record on this 2nd day of June, 2015, at 11:55 o'clock P.M. and was duly recorded in Book 11 CIC Page 32, as Document Number 2109446.002.

Jonell M. Sawyer
County Recorder/Registrar of Titles
By: Nick White, Deputy

ALL IMPROVEMENTS EXTERIOR TO THE BUILDING ARE COMMON ELEMENTS UNLESS OTHERWISE SHOWN.

• DENOTES 1/2 INCH IRON PIPE MONUMENT FOUND AND MARKED BY LICENSE NO. 10943 UNLESS OTHERWISE NOTED.

■ DENOTES CONCRETE UNLESS OTHERWISE SHOWN.

FOR THE PURPOSES OF THIS PLAT, THE NORTH LINE OF LOT 9, BLOCK 1, GONYEA'S ADDITION HAS AN ASSUMED BEARING OF NORTH 89 DEGREES 58 MINUTES 22 SECONDS WEST.

BENCHMARK: TOP NUT OF HYDRANT LOCATED ON THE WEST SIDE OF CENTRAL AVENUE NORTH ±300 FEET NORTH OF THE INTERSECTION OF CENTRAL AVENUE NORTH AND 81ST AVENUE NE. ELEVATION = 908.28 (N.G.V.D. 1929)

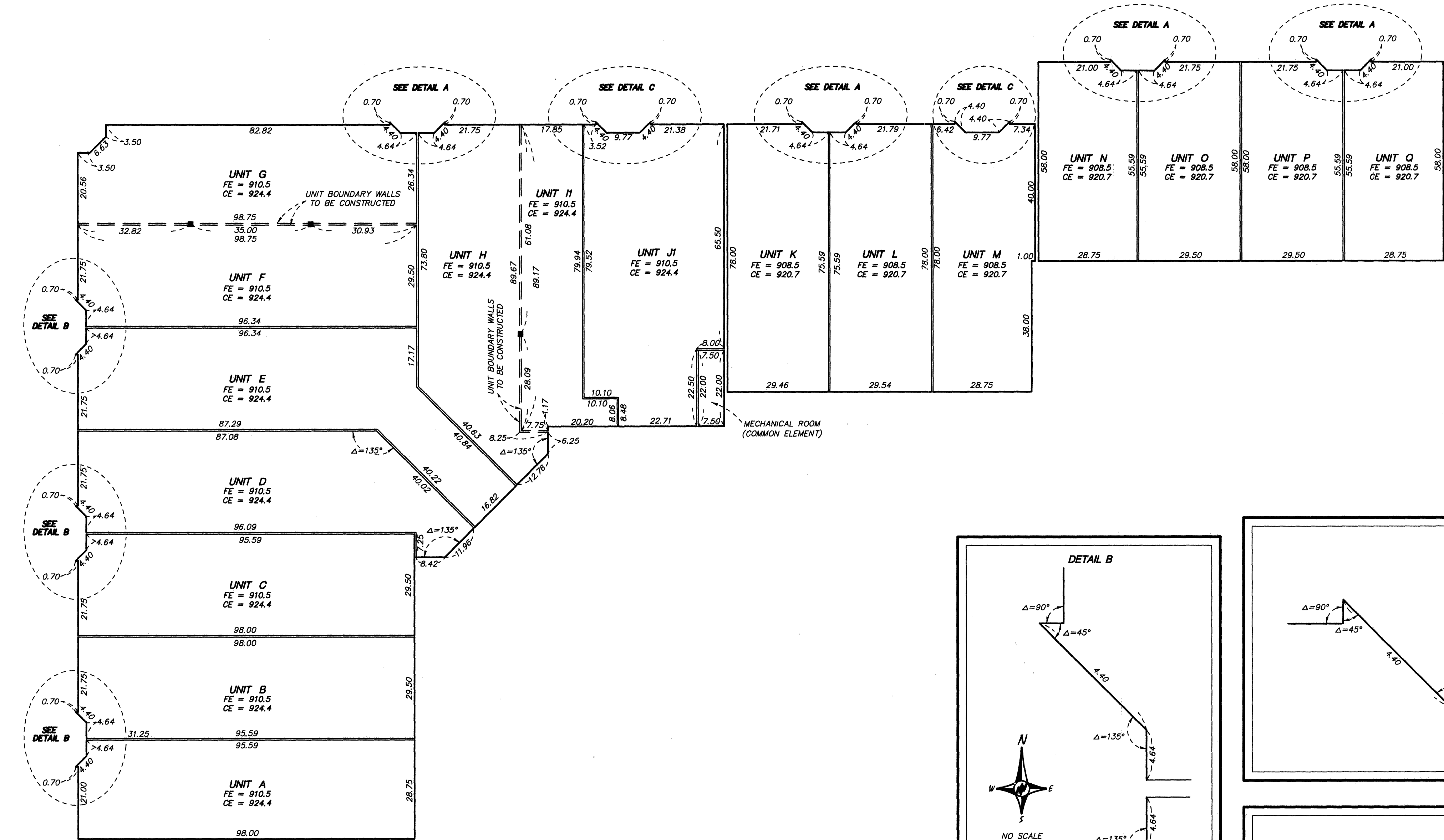
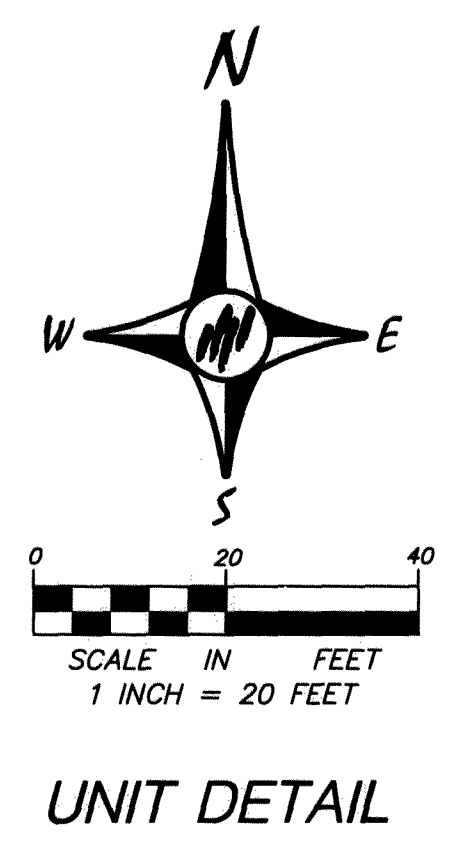
ALL UNITS OF MEASURE ARE SHOWN IN FEET AND HUNDREDTHS OF A FOOT.

COMMON INTEREST COMMUNITY NUMBER 207
SPRING LAKE PARK NUMBER TWO CONDOMINIUMS
A CONDOMINIUM
FIRST AMENDED COMMON INTEREST COMMUNITY PLAT

Bk 11 of CIC pg 32

THIS FIRST AMENDED COMMON INTEREST COMMUNITY PLAT IS
PART OF THE DECLARATION RECORDED AS DOCUMENT NO.
2107121.001 ON THIS 2nd DAY OF June, 2015.

CITY OF SPRING LAKE PARK
COUNTY OF ANOKA
SEC. 1, T. 30, R. 24



LEGEND

- CE = CEILING ELEVATION
- FE = FLOOR ELEVATION
- ELEVATIONS SHOWN ARE REFERENCED TO A BENCHMARK AS NOTED ON SHEET 1.
- ALL UNITS OF MEASURE ARE SHOWN IN FEET AND TENTHS OF A FOOT.
- DENOTES 0.6' BY 0.6' STEEL STRUCTURAL SUPPORT BEAM

