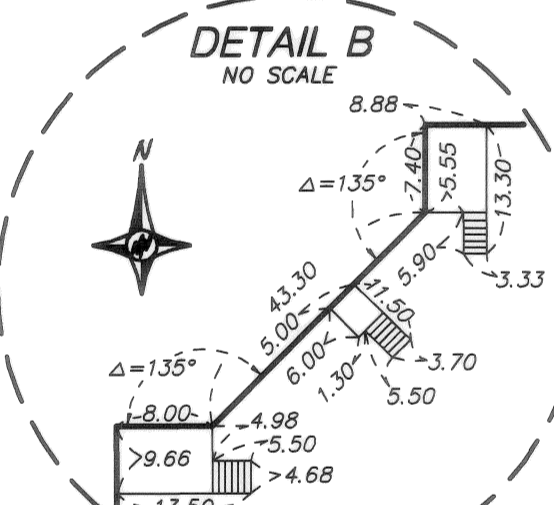
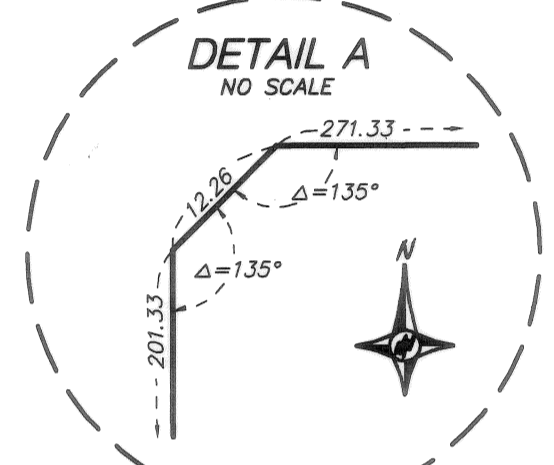
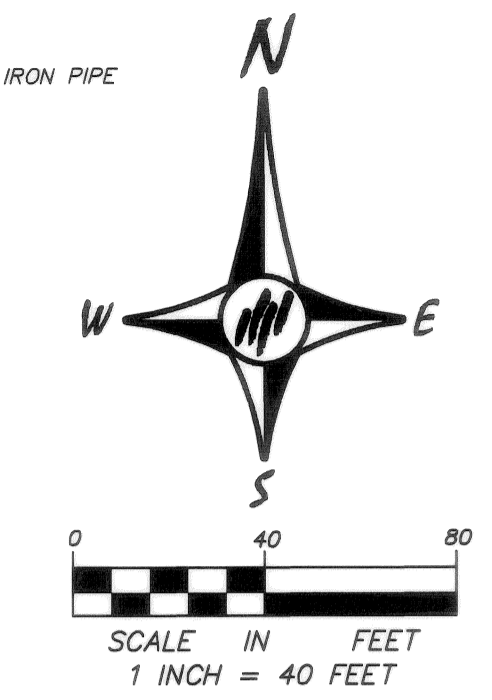
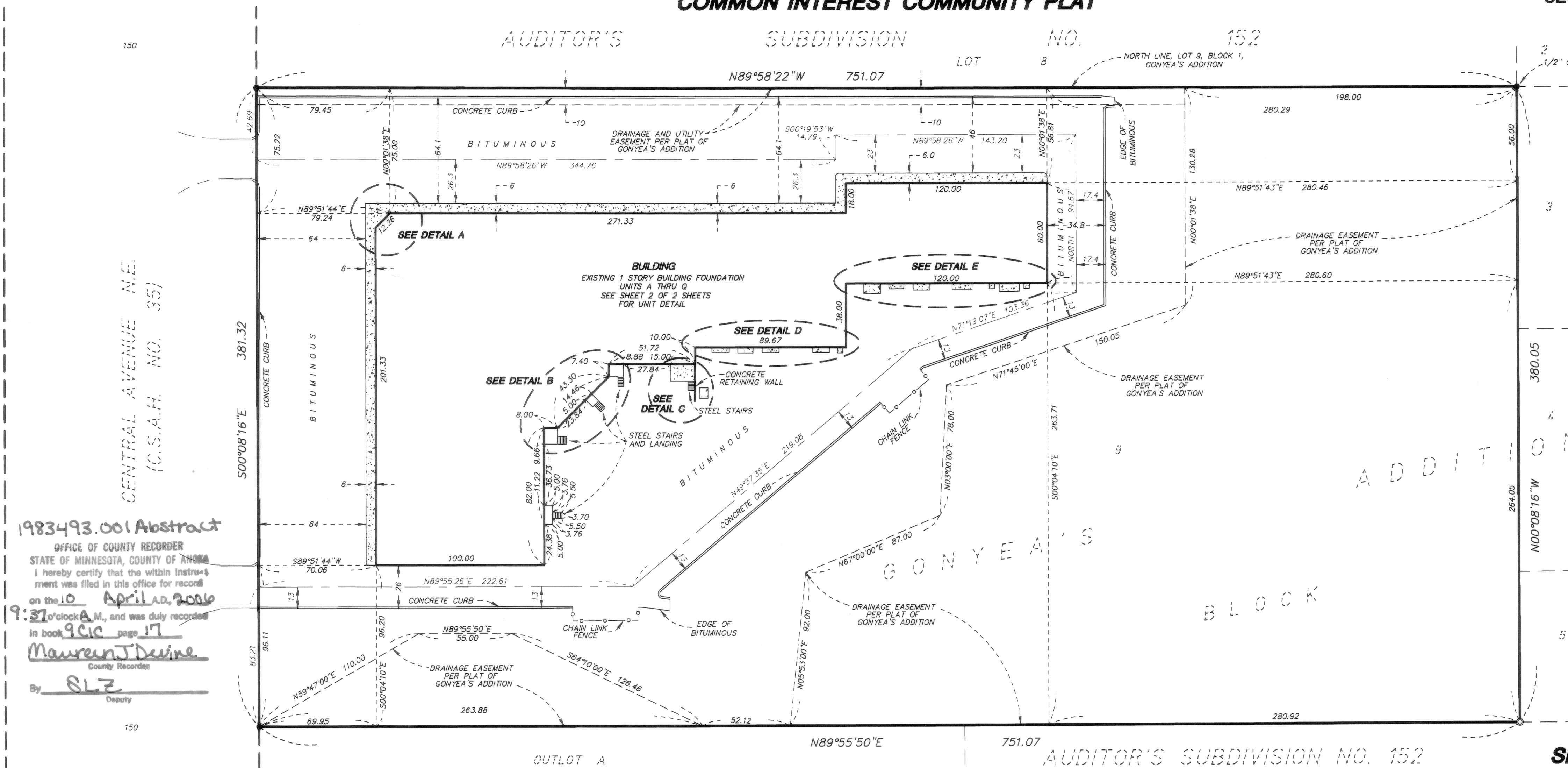


COMMON INTEREST COMMUNITY NUMBER 207
SPRING LAKE PARK NUMBER TWO CONDOMINIUMS
A CONDOMINIUM
COMMON INTEREST COMMUNITY PLAT

BK 9 of CIC pg 17

THIS COMMON INTEREST COMMUNITY PLAT IS PART OF THE DECLARATION RECORDED AS DOCUMENT NO. 1983493.001 ON THIS 16 DAY OF April 2006

CITY OF SPRING LAKE PARK
COUNTY OF ANOKA
SEC. 1, T. 30, R. 24



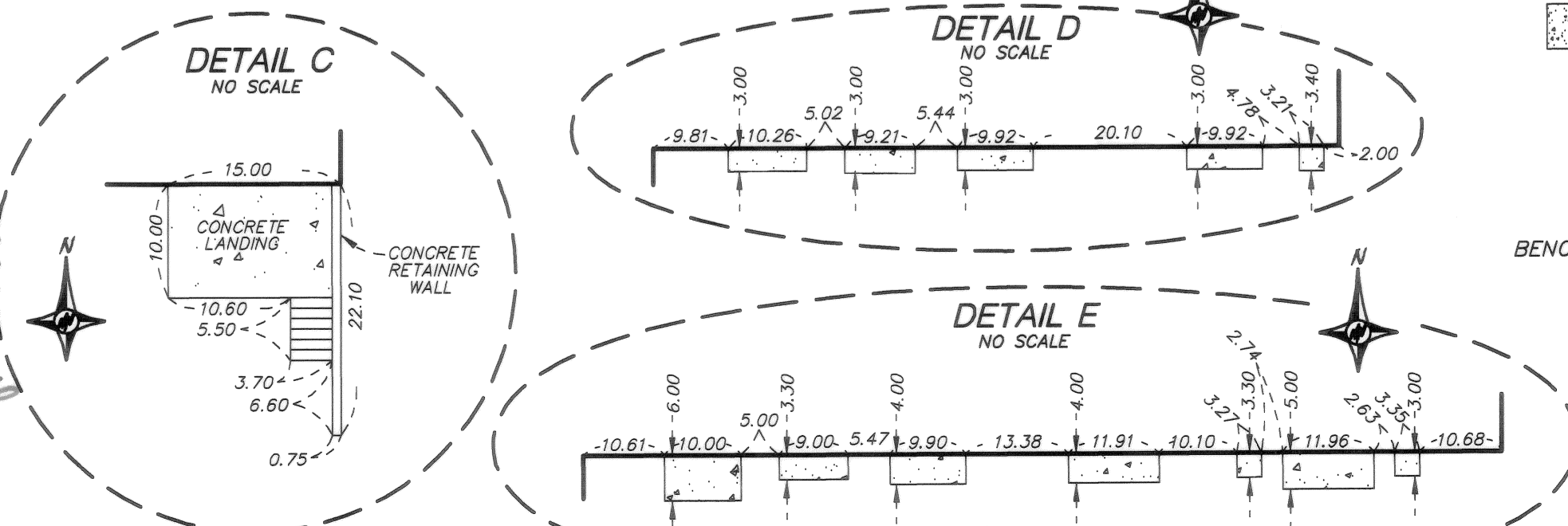
1983493.001 Abstract
OFFICE OF COUNTY RECORDER
STATE OF MINNESOTA, COUNTY OF ANOKA
I hereby certify that the within instrument was filed in this office for record on the 10 April 2006 at 9:37 o'clock A.M., and was duly recorded in book 9CIC page 17
Maureen J Devine
County Recorder
By: SLZ Deputy

I, Mark F. Maistrovich, do hereby certify that the work was undertaken by or reviewed and approved by me for this COMMON INTEREST COMMUNITY NUMBER 207, SPRING LAKE PARK NUMBER TWO CONDOMINIUMS, A CONDOMINIUM, being located upon Lot 9, Block 1, GONYEA'S ADDITION, Anoka County, Minnesota, fully and accurately depicts all information required by Minnesota Statutes, Section 515B.2-110.
Dated this 5th day of July 2005
Mark F. Maistrovich, Land Surveyor
Minnesota License No. 25287
Notary Public, Anoka County, Minnesota
My commission expires Jan. 31, 2010

I, Leonard Lampert, pursuant to Minnesota Statutes, Section 515B.2-101 (c), that all structural components and mechanical systems do hereby certify serving more than one unit of all buildings containing or comprising any units hereby created, are substantially completed consistent with the floor plans for this CIC Plat of COMMON INTEREST COMMUNITY NUMBER 207, SPRING LAKE PARK NUMBER TWO CONDOMINIUMS, A CONDOMINIUM.
Dated this 7th day of April 2006
Leonard Lampert, a Registered Architect
Minnesota Registration No. 13007
Notary Public, Anoka County, Minnesota
My commission expires Jan. 31, 2010

SURVEY SECTION ANOKA COUNTY, MINNESOTA
This condominium plat has been reviewed and approved this 10th day of April 2006
By: Larry O. Hoium by Charles F. Setzer, Deputy
Anoka County Surveyor

I HEREBY CERTIFY THAT THE CURRENT AND DELINQUENT TAXES ON THE LANDS DESCRIBED WITHIN ARE PAID AND THE TRANSFER IS ENTERED April 10, 2006
MAUREEN J DEVINE
PROPERTY TAX ADMINISTRATOR

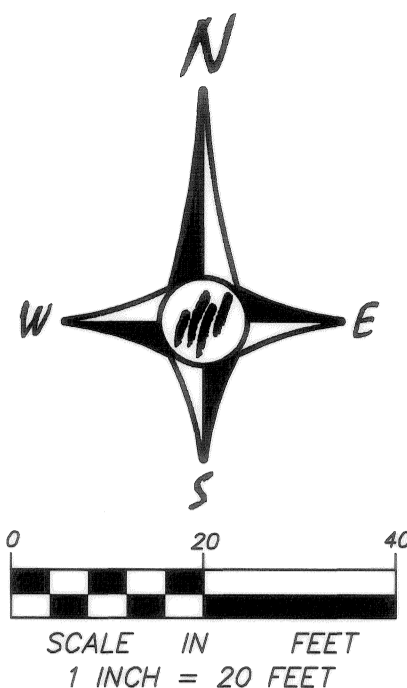


SITE PLAN
ALL IMPROVEMENTS EXTERIOR TO THE BUILDING ARE COMMON ELEMENTS UNLESS OTHERWISE SHOWN.
DENOTES 1/2 INCH BY 14 INCH IRON PIPE MONUMENT SET AND MARKED BY LICENSE NO. 25287.
DENOTES 1/2 INCH IRON PIPE MONUMENT FOUND AND MARKED BY LICENSE NO. 10943 UNLESS OTHERWISE NOTED.
DENOTES CONCRETE UNLESS OTHERWISE SHOWN.
FOR THE PURPOSES OF THIS PLAT, THE NORTH LINE OF LOT 9, BLOCK 1, GONYEA'S ADDITION HAS AN ASSUMED BEARING OF NORTH 89 DEGREES 58 MINUTES 22 SECONDS WEST.
BENCHMARK: TOP NUT OF HYDRANT LOCATED ON THE WEST SIDE OF CENTRAL AVENUE NORTH ±300 FEET NORTH OF THE INTERSECTION OF CENTRAL AVENUE NORTH AND 81ST AVENUE NE. ELEVATION = 908.28 (N.G.V.D. 1929)
ALL UNITS OF MEASURE ARE SHOWN IN FEET AND HUNDREDTHS OF A FOOT.

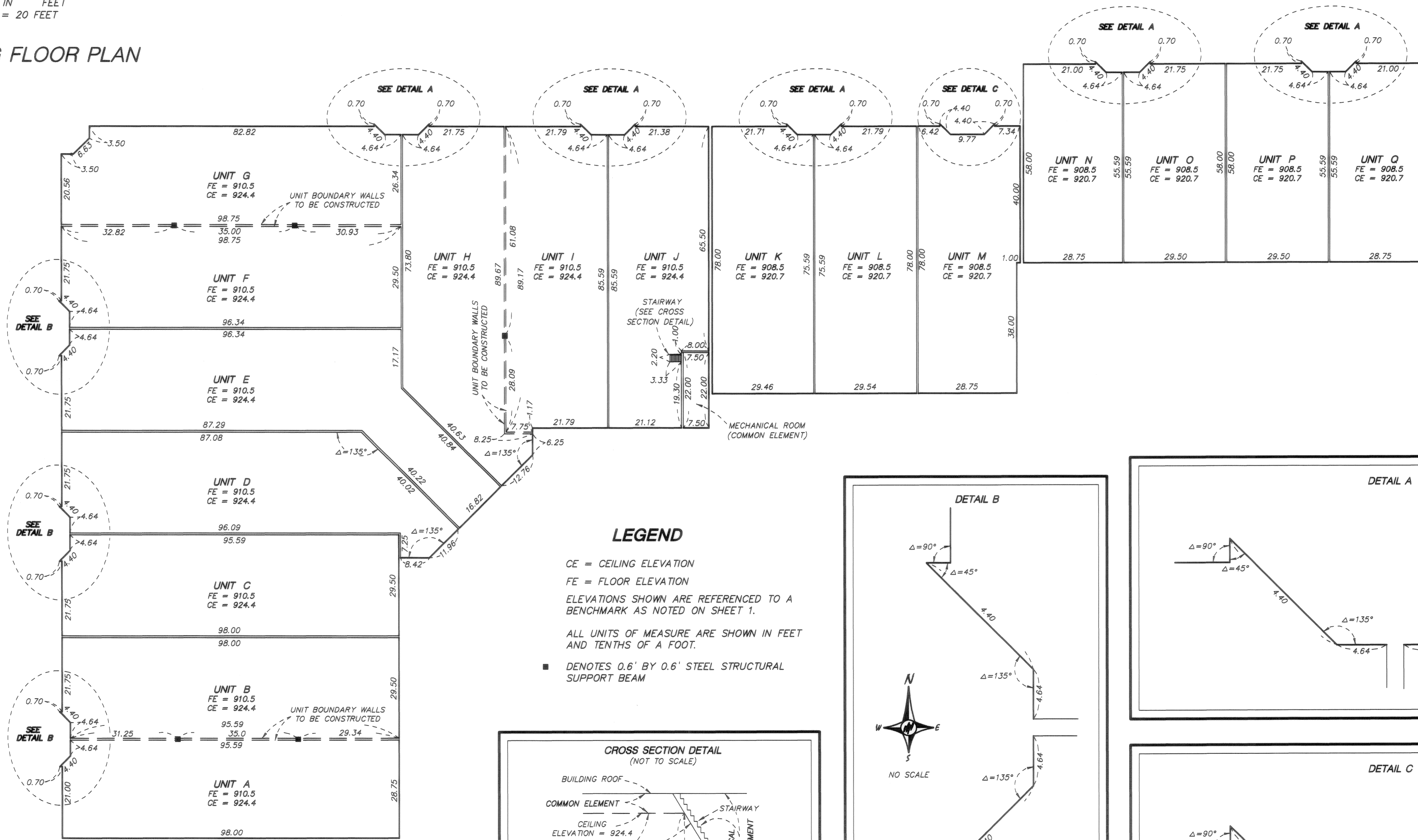
PASSE ENGINEERING INC.
Registered Professional Engineers
Licensed Land Surveyors

COMMON INTEREST COMMUNITY NUMBER 207 SPRING LAKE PARK NUMBER TWO CONDOMINIUMS A CONDOMINIUM COMMON INTEREST COMMUNITY PLAT

CITY OF SPRING LAKE PARK
COUNTY OF ANOKA
SEC. 1, T. 30, R. 24



BUILDING FLOOR PLAN



LEGEND

CE = CEILING ELEVATION
FE = FLOOR ELEVATION
ELEVATIONS SHOWN ARE REFERENCED TO A BENCHMARK AS NOTED ON SHEET 1.
ALL UNITS OF MEASURE ARE SHOWN IN FEET AND TENTHS OF A FOOT.
■ DENOTES 0.6" BY 0.6" STEEL STRUCTURAL SUPPORT BEAM

