

# COMMON INTEREST COMMUNITY NUMBER 211

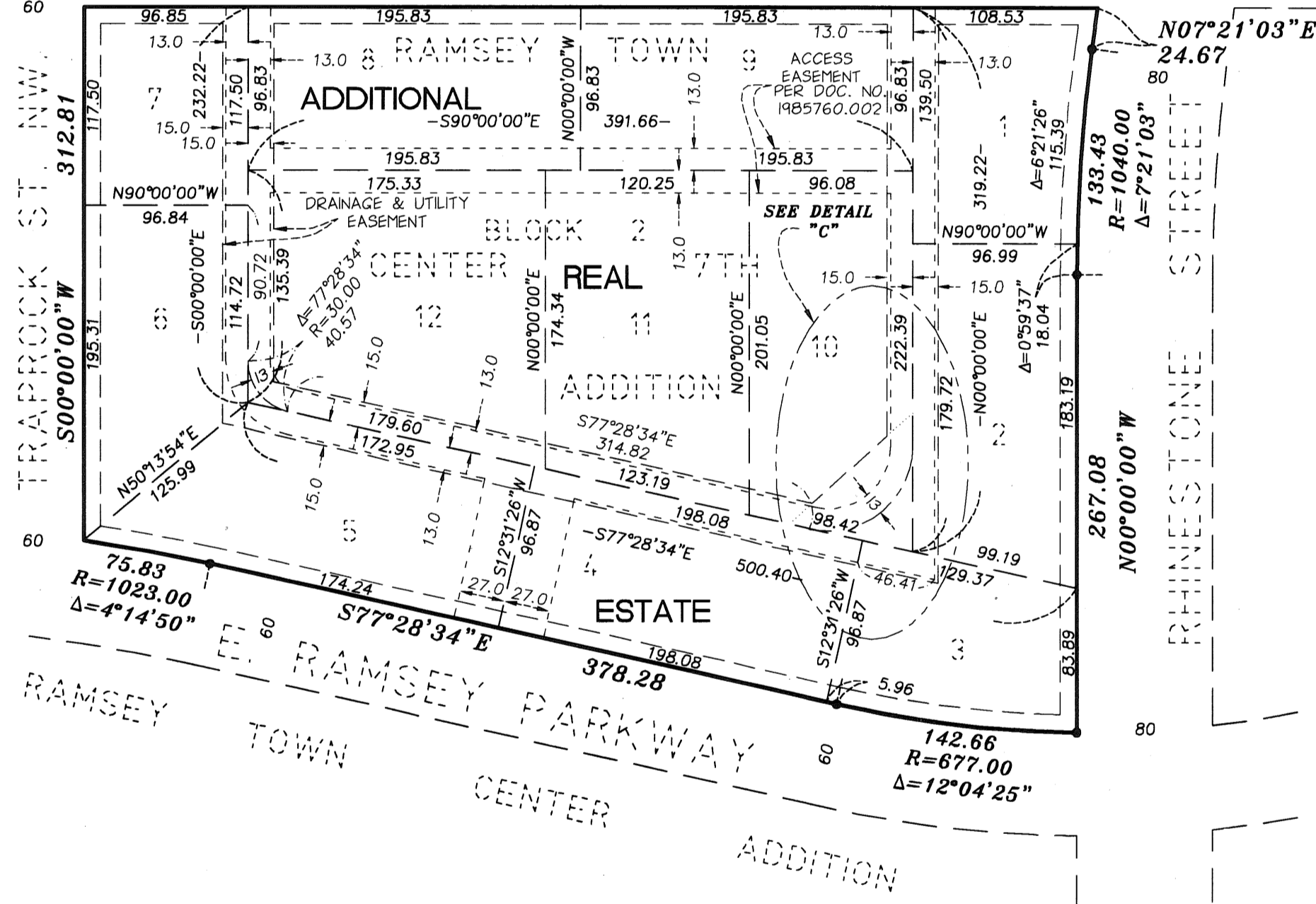
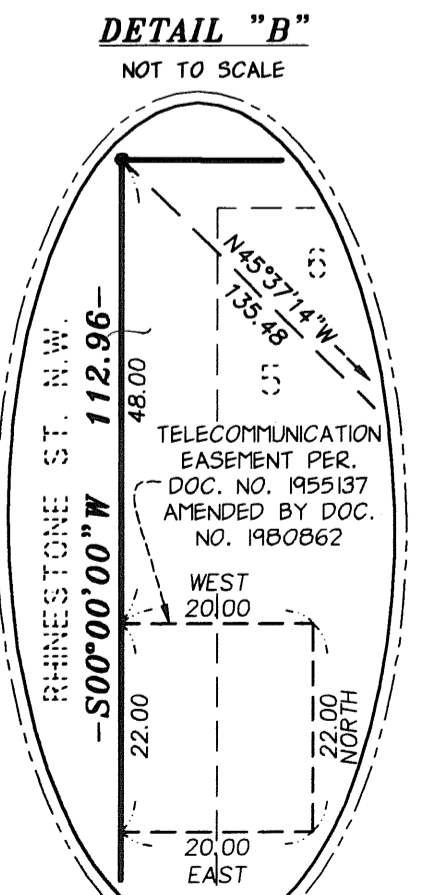
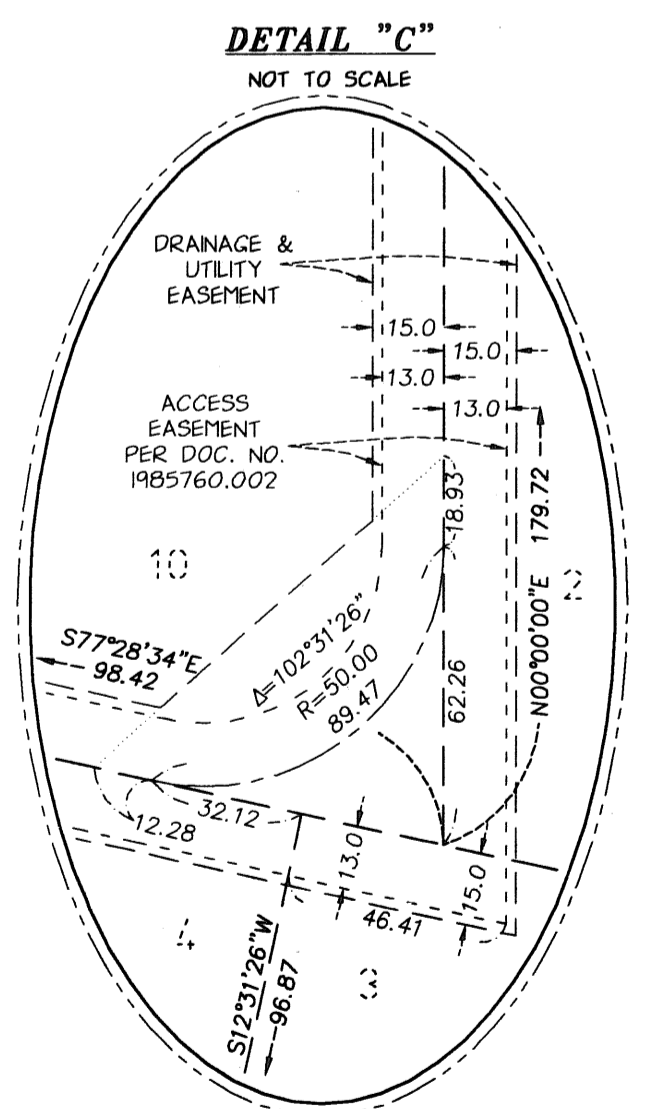
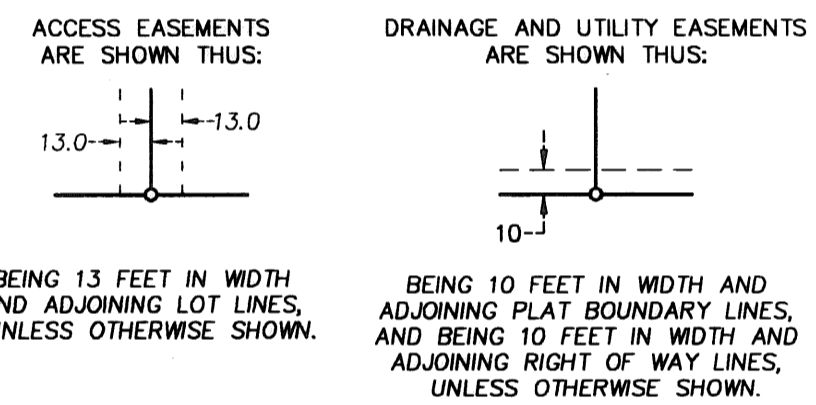
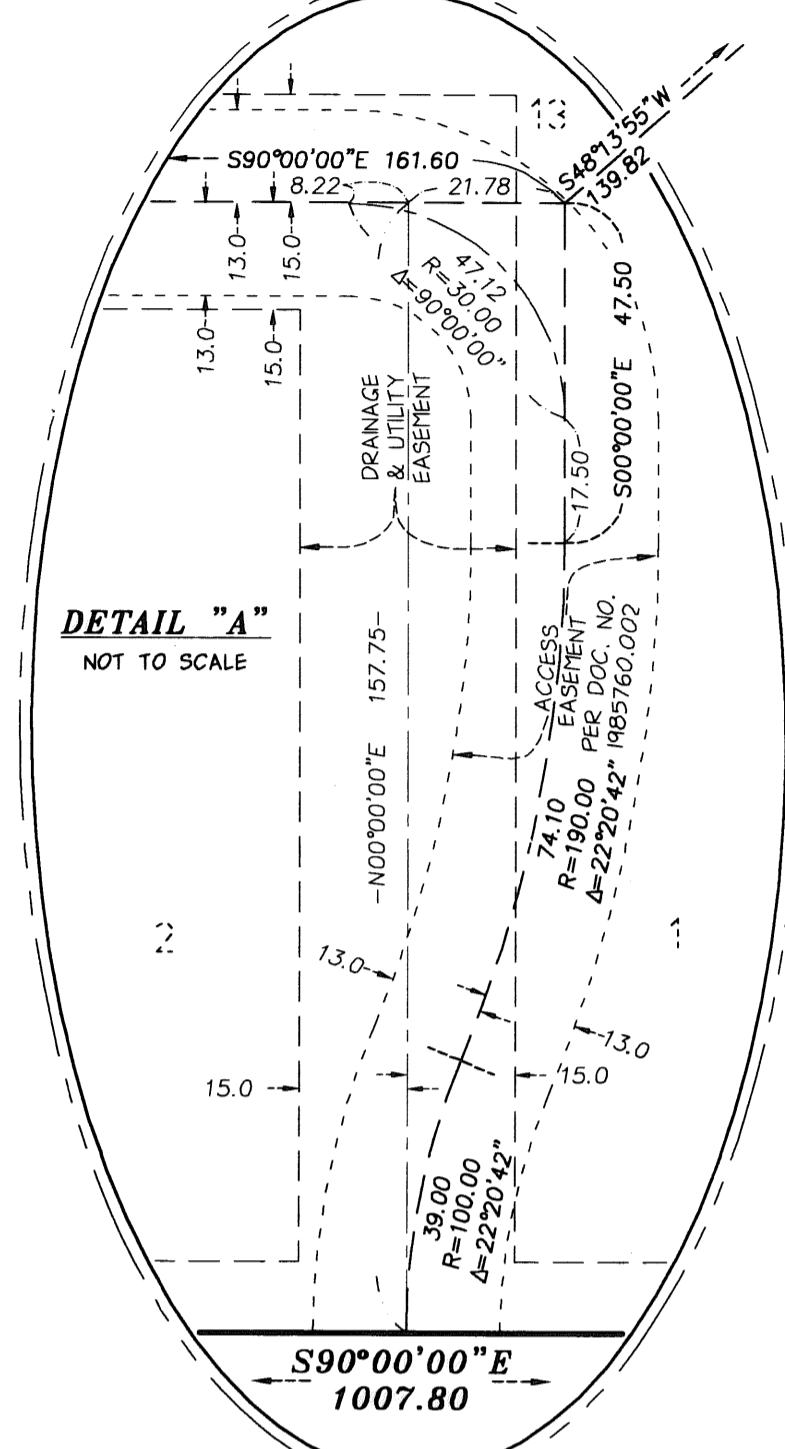
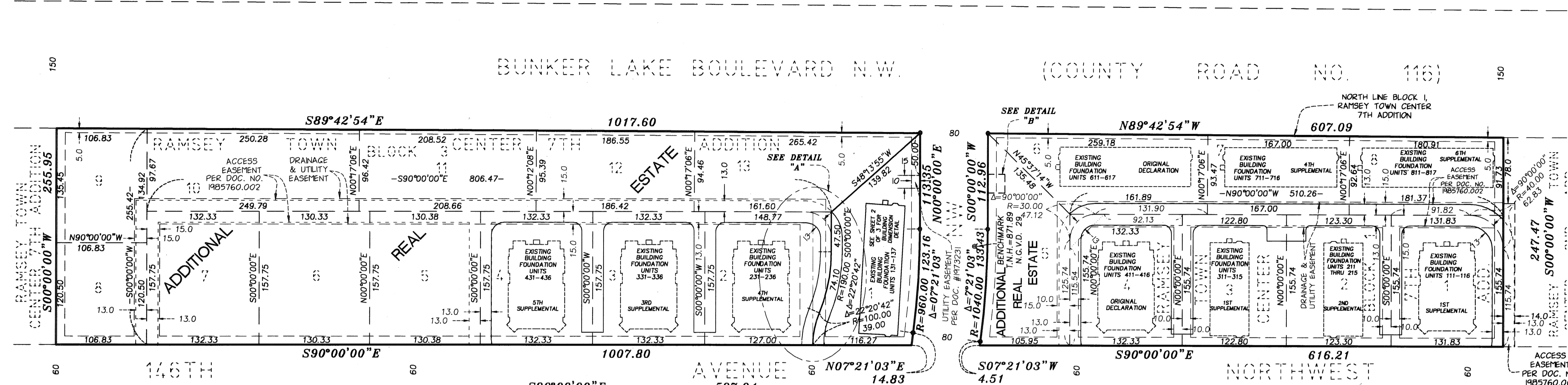
A CONDOMINIUM

## THE SYMPHONY AT TOWN CENTER

### SEVENTH SUPPLEMENTAL COMMON INTEREST COMMUNITY PLAT

This Seventh Supplemental Common Interest Community Plat is part of the Seventh Supplemental Declaration recorded as Document No. 1995950.001 on this 21<sup>st</sup> day of September, 2007.

CITY OF RAMSEY  
COUNTY OF ANOKA  
SEC. 28, TWP. 32, RGE. 25



I, Jonathan M. Pittmann, do hereby certify that the work was undertaken by or reviewed and approved by me for this Seventh Supplemental Common Interest Community Plat of COMMON INTEREST COMMUNITY NUMBER 211, A CONDOMINIUM, THE SYMPHONY AT TOWN CENTER, being located upon:

Lot 1, Block 3, RAMSEY TOWN CENTER 7TH ADDITION, according to the recorded plat thereof, Anoka County, Minnesota,

and the Additional Real Estate described as follows:

Lot 5, Block 1; Lots 1 through 12, inclusive, Block 2; Lots 5, 6, 7, 8, 9, 10, 11, 12, and 13, Block 3, all in RAMSEY TOWN CENTER 7TH ADDITION, according to the recorded plat thereof, Anoka County, Minnesota,

fully and accurately depicts all information required by Minnesota Statutes, Section 515B.2-110. Dated this 5<sup>th</sup> day of SEPTEMBER, 2007.

*Jonathan M. Pittmann*  
Jonathan M. Pittmann, Land Surveyor  
Minnesota License No. 44647

STATE OF MINNESOTA  
COUNTY OF HENNEPIN

The foregoing instrument was acknowledged before me this 5 day of September, 2007, by Jonathan M. Pittmann, a Licensed Land Surveyor.

*Michelle Chapp*  
Michelle Chapp  
Notary Public, Hennepin County, Minnesota  
My Commission Expires January 31, 2010



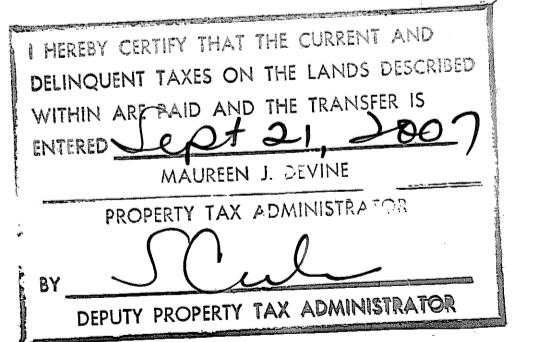
I, Stephen M. Johnston, pursuant to Minnesota Statutes, Section 515B.2-101(c), do hereby certify that the structural components of the structures containing the units and the mechanical systems serving more than one unit, but not the units, are substantially completed. Dated this 5<sup>th</sup> day of SEPTEMBER, 2007.

*Stephen M. Johnston*  
Stephen M. Johnston  
Licensed Professional Engineer  
Minnesota License No. 18914

STATE OF MINNESOTA  
COUNTY OF HENNEPIN

The foregoing instrument was acknowledged before me this 5 day of September, 2007, by Stephen M. Johnston, a Licensed Professional Engineer.

*Michelle Chapp*  
Michelle Chapp  
Notary Public, Hennepin County, Minnesota  
My Commission Expires January 31, 2010



Pursuant to Minnesota Statutes, Chapter 389.09, Subdivision 2, this Common Interest Community Plat has been reviewed and is approved this 21<sup>st</sup> day of SEPTEMBER, 2007.

*Larry D. Hoffm*  
Larry Hoffm, P.L.S.  
Anoka County Surveyor

\$56.00



SITE PLAN AND BUILDING DIMENSION DETAIL

BK 10 of CIC P 613

C.R. DOC. NO. 1995950.001

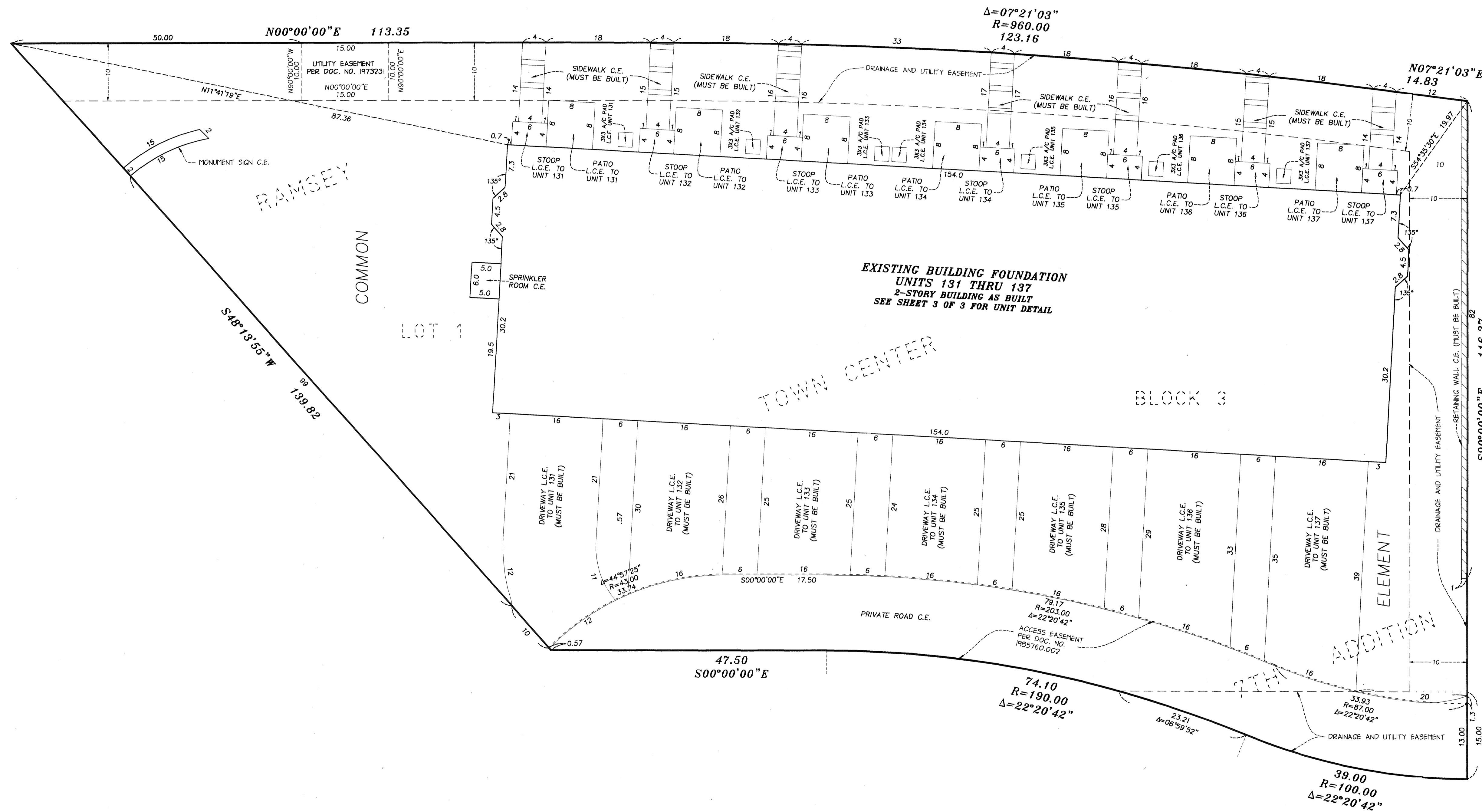
# COMMON INTEREST COMMUNITY NUMBER 211

A CONDOMINIUM

THE SYMPHONY AT TOWN CENTER

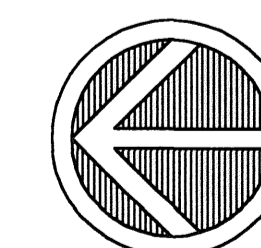
SEVENTH SUPPLEMENTAL COMMON INTEREST COMMUNITY PLAT

CITY OF RAMSEY  
COUNTY OF ANOKA  
SEC. 28, TWP. 32, RGE. 25



NOTE: ALL PATIOS AND A/C PADS MUST BE BUILT.  
 C.E. - DENOTES COMMON ELEMENT  
 L.C.E. - DENOTES LIMITED COMMON ELEMENT

BENCH MARK:  
 TOP NUT OF HYDRANT LOCATED ON THE EAST SIDE OF  
 RHINESTONE ST. N.W. AND 226 FEET SOUTH OF THE  
 CENTERLINE OF COUNTY ROAD 116 (BUNKER LAKE BLVD.)  
 ELEVATION = 871.89 FEET (NGVD 1929 DATUM)



NORTH

SCALE: 1 INCH = 10 FEET  
 0 10 20  
 SCALE IN FEET



UNIT DETAIL  
AS BUILT

# COMMON INTEREST COMMUNITY NUMBER 211

A CONDOMINIUM

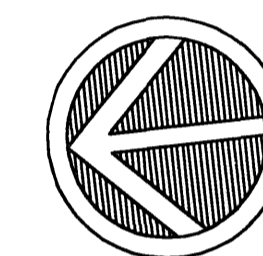
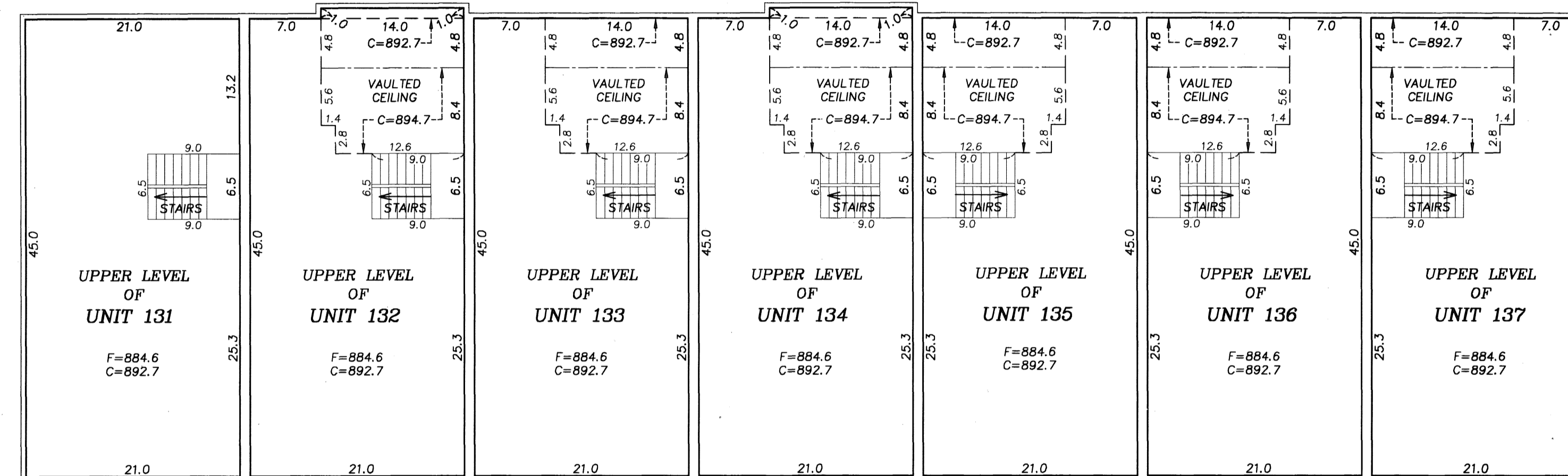
THE SYMPHONY AT TOWN CENTER

SEVENTH SUPPLEMENTAL COMMON INTEREST COMMUNITY PLAT

C.R. DOC. NO. 1995950.001

CITY OF RAMSEY  
COUNTY OF ANOKA  
SEC. 28, TWP. 32, RGE. 25

UPPER LEVEL -

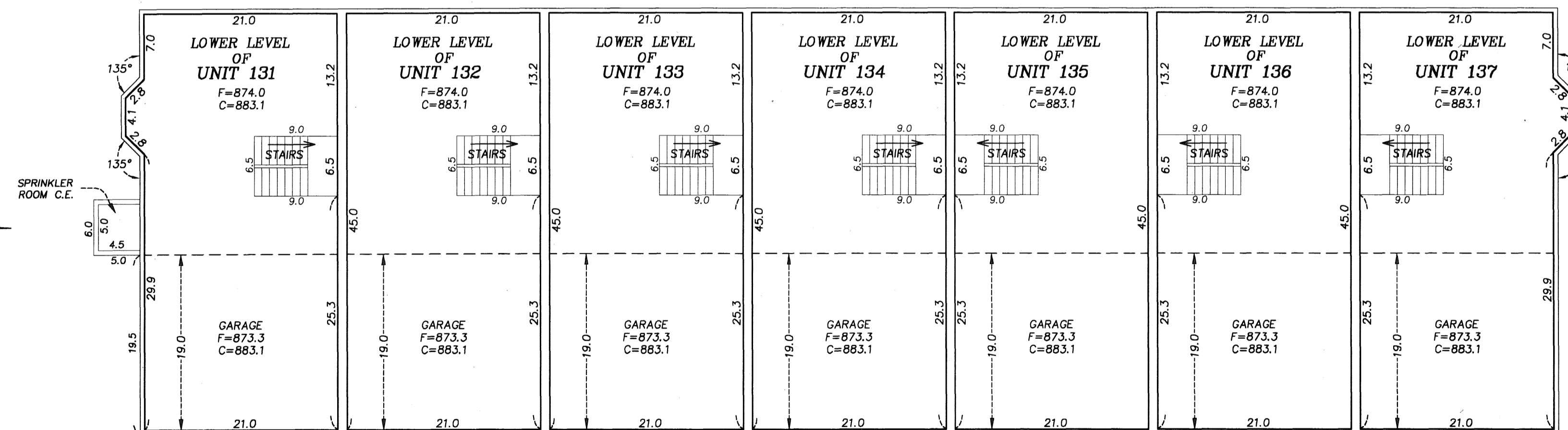


NORTH

SCALE: 1 INCH = 10 FEET

SCALE IN FEET

LOWER LEVEL -



- C.E. - DENOTES COMMON ELEMENT
- C - DENOTES CEILING ELEVATION
- F - DENOTES FLOOR ELEVATION
- - DENOTES DIRECTION TO HIGHER ELEVATION

INTERIOR DIMENSIONS SHOWN ARE MEASURED TO THE UNFINISHED SURFACE OF THE WALLS, FLOORS AND CEILINGS.

ELEVATIONS ARE REFERENCED TO A BENCH MARK AS NOTED ON SHEET 2 OF 3 SHEETS AND ARE SHOWN IN FEET AND TENTHS OF A FOOT.

