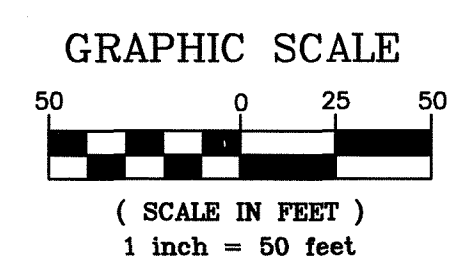


SITE PLAN

CIC NUMBER 212
A CONDOMINIUM
CROWN COVE
TENTH SUPPLEMENTAL
CIC PLAT

This TENTH SUPPLEMENTAL CIC plat is part of the TENTH SUPPLEMENTAL to the declaration recorded as Document No. 505160.002 on this 16 day of July, 2011.

CITY OF BLAINE Book 11 CIC pg 10
COUNTY OF ANOKA
SEC. 10, TWP. 31, RGE. 23



I, John C. Larson, do hereby certify that the work was undertaken by or reviewed and approved by me for this TENTH SUPPLEMENTAL CIC Plat of CIC Number 212, A CONDOMINIUM, CROWN COVE, being located upon:
Lot 3, Block 1, THE LAKES OF RADISSON TWENTY-FOURTH ADDITION, Anoka County, Minnesota,
and the additional real estate is located upon the following described property designated as:
Lots 5, 14 and 15, Block 1, THE LAKES OF RADISSON TWENTY-FOURTH ADDITION,
Anoka County, Minnesota,
and that this CIC plat fully and accurately depicts all information required by Minnesota Statutes, Section 515B.2-110.

Dated this 15th day of February, 2011.

John C. Larson
John C. Larson, Land Surveyor
Minnesota License No. 19828

STATE OF MINNESOTA
COUNTY OF DAKOTA
The foregoing instrument was acknowledged before me this 15th day of February, 2011, by John C. Larson, a Licensed Land Surveyor.

Nicholas J. Kolsrud
Nicholas J. Kolsrud
Notary Public, Dakota County, Minnesota
My Commission Expires January 31, 2015

I, John M. Molinaro, pursuant to Minnesota Statutes, Section 515B.2-101(c), do hereby certify that the structural components of the structures containing the units and the mechanical systems serving more than one unit, are substantially completed.

Dated this 15th day of February, 2011.

John M. Molinaro
John M. Molinaro
Licensed Professional Engineer
Minnesota License No. 45831

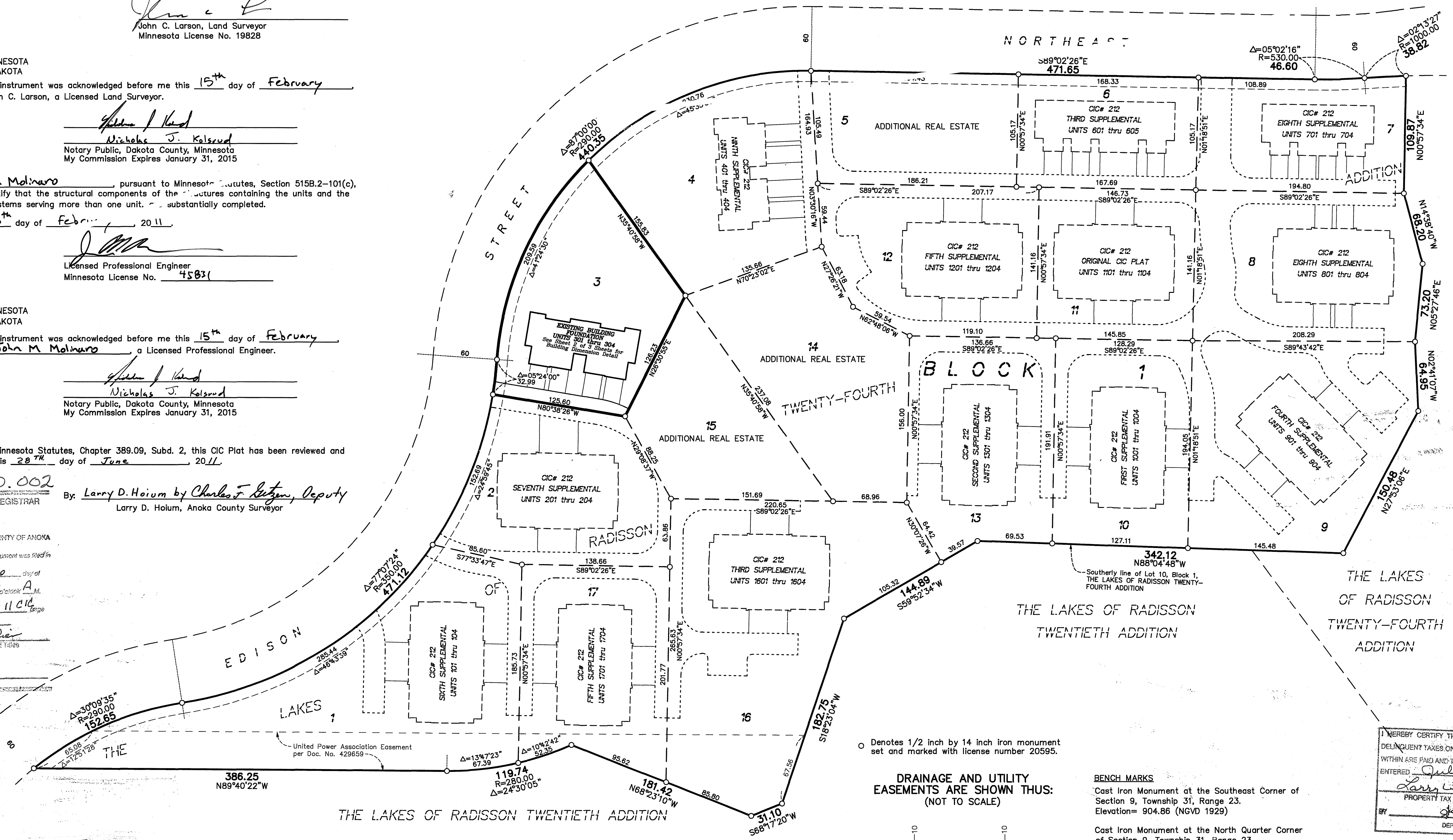
STATE OF MINNESOTA
COUNTY OF DAKOTA
The foregoing instrument was acknowledged before me this 15th day of February, 2011, by John M. Molinaro, a Licensed Professional Engineer.

Nicholas J. Kolsrud
Nicholas J. Kolsrud
Notary Public, Dakota County, Minnesota
My Commission Expires January 31, 2015

Pursuant to Minnesota Statutes, Chapter 389.09, Subd. 2, this CIC Plat has been reviewed and is approved this 20th day of June, 2011.

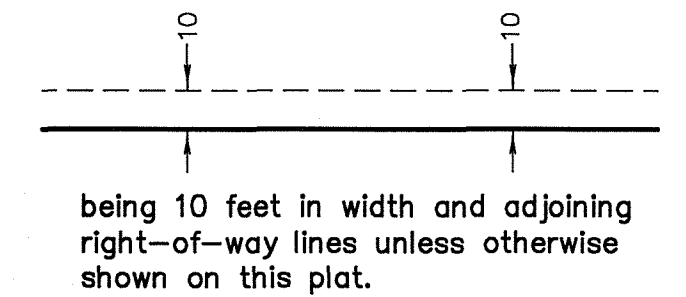
505160.002
Office of RECORDER/REGISTRAR
OF TITLES
By: Larry D. Hoium by Charles F. Letzen, Deputy
Larry D. Hoium, Anoka County Surveyor

STATE OF MINNESOTA COUNTY OF ANOKA
I hereby certify that the within instrument was filed in this office for record on the 16 day of July, 2011 at 10:19 o'clock A.M. and was duly reported in book 11 CIC 10.
Larry W. Dalen
Recorder/Registrar of Titles



○ Denotes 1/2 inch by 14 inch iron monument set and marked with license number 20595.

DRAINAGE AND UTILITY EASEMENTS ARE SHOWN THUS: (NOT TO SCALE)



BENCH MARKS
Cast Iron Monument at the Southeast Corner of Section 9, Township 31, Range 23. Elevation= 904.86 (NGVD 1929)
Cast Iron Monument at the North Quarter Corner of Section 9, Township 31, Range 23. Elevation= 903.09 (NGVD 1929)

Bearings are based on the southerly line of Lot 10, Block 1, THE LAKES OF RADISSON TWENTY-FOURTH ADDITION, which is assumed to have a bearing of North 88 degrees 04 minutes 48 seconds West.

HEREBY CERTIFY THAT THE CURRENT AND DELINQUENT TAXES ON THE LANDS DESCRIBED WITHIN ARE PAID AND THE TRANSFER IS ENTERED July 16, 2011
Larry W. Dalen
PROPERTY TAX ADMINISTRATOR
DEPUTY

BOOK 11 CIC PG 10

C.R. DOC. NO. 505160.002

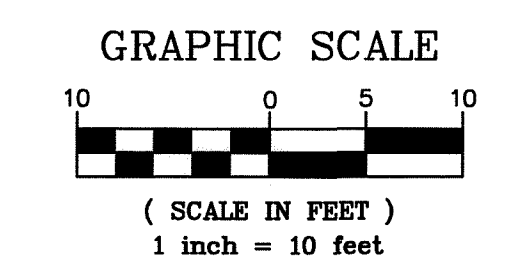
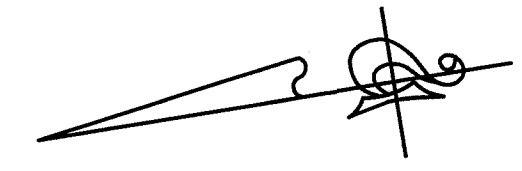
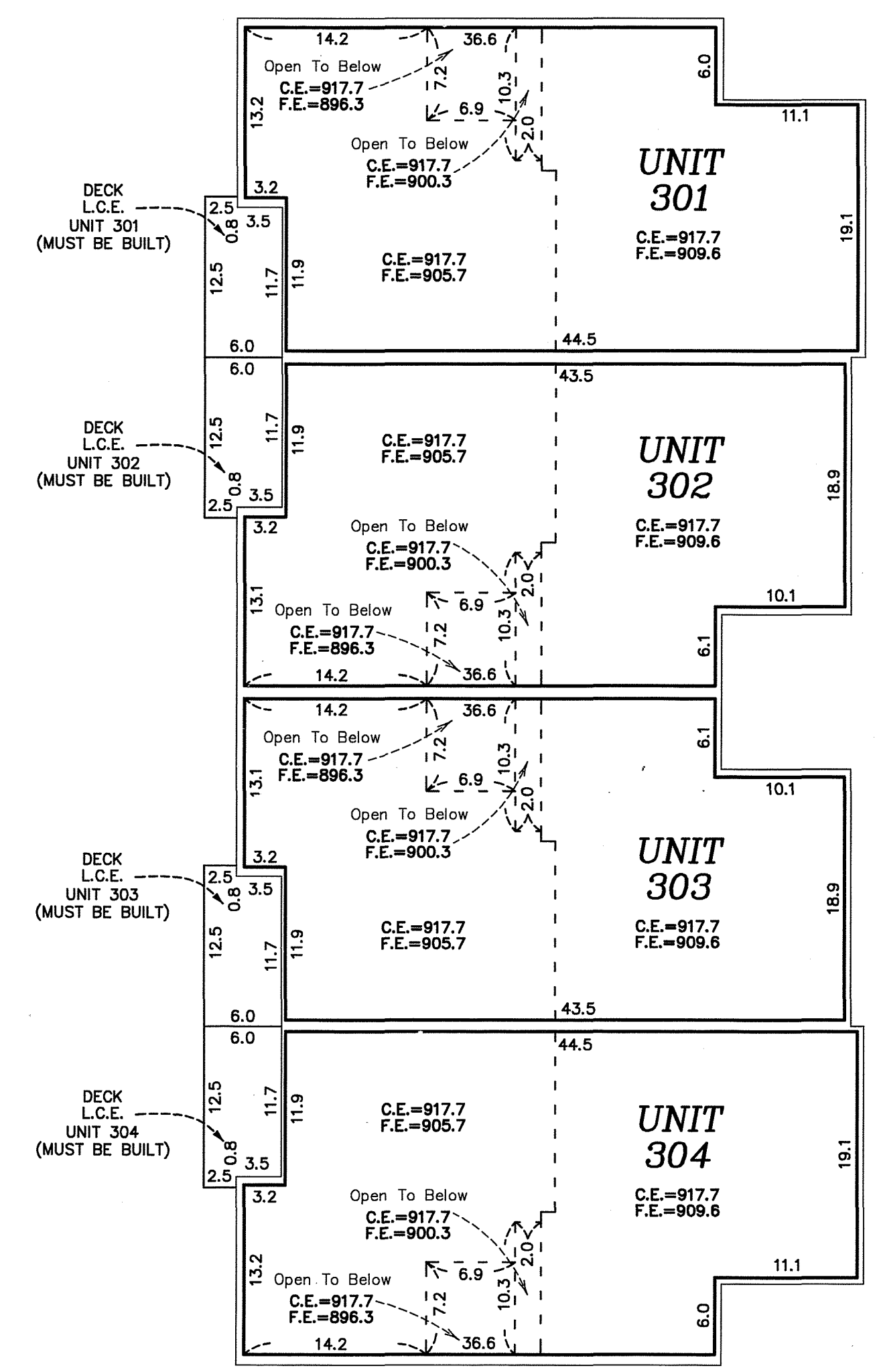
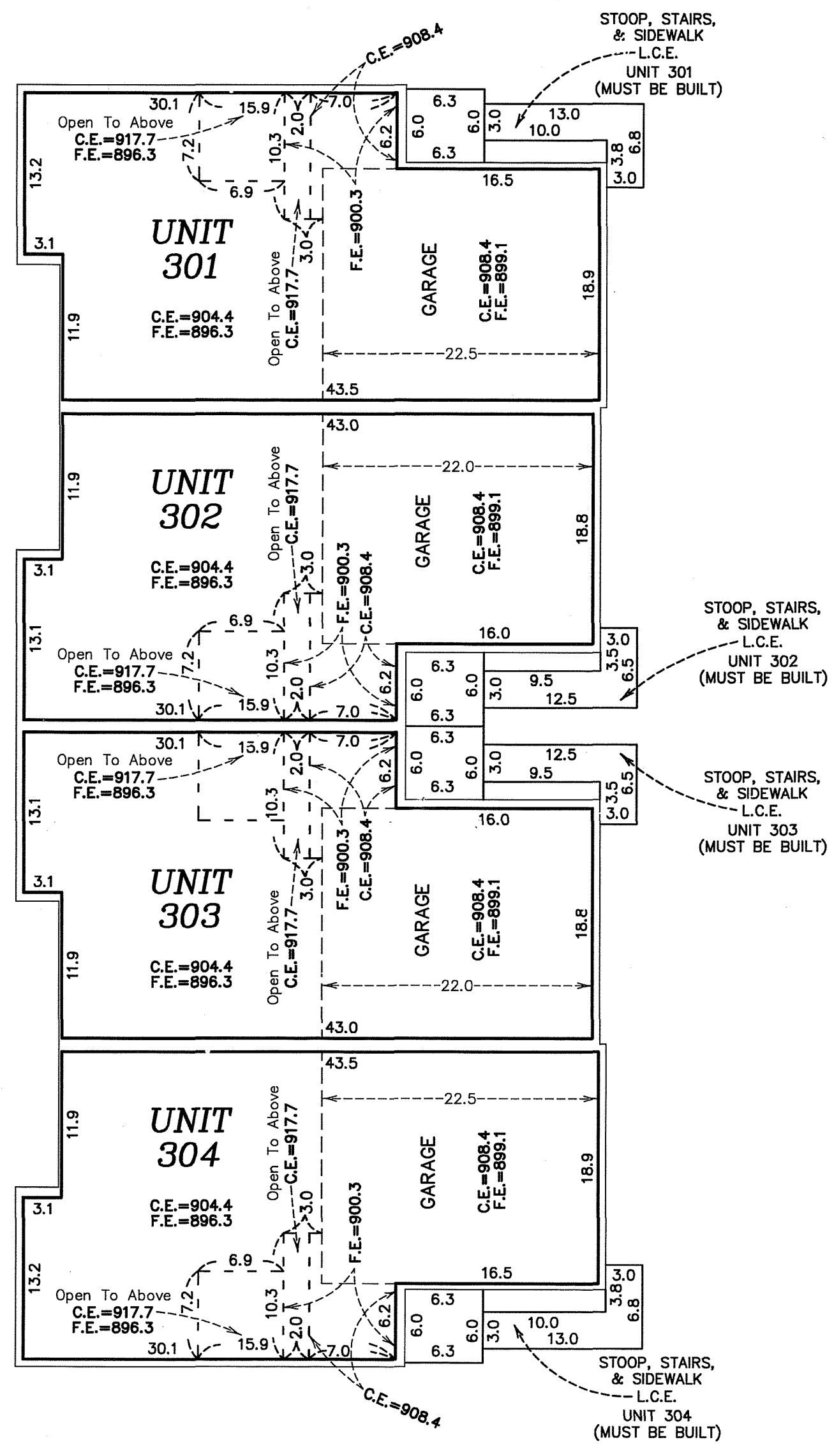
CITY OF BLAINE
COUNTY OF ANOKA
SEC. 10, TWP. 31, RGE. 23

CIC NUMBER 212 A CONDOMINIUM CROWN COVE TENTH SUPPLEMENTAL CIC PLAT

UNIT DETAIL
(AS-BUILT)

LOWER LEVEL

UPPER LEVEL



Elevations are referenced to a benchmark as noted on the site plan on Sheet 1 of 3 Sheets and are shown in feet and tenths of a foot.

F.E. = Floor elevation
C.E. = Ceiling elevation
L.C.E. = Limited Common Element

Interior dimensions shown are measured to the unfinished surface of the walls, floors and ceiling.