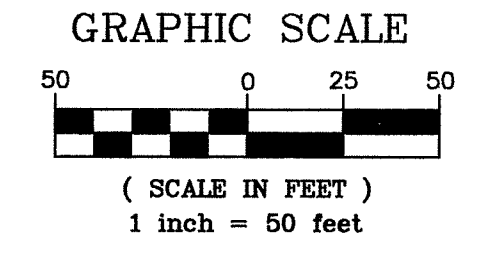


SITE PLAN

CIC NUMBER 212
A CONDOMINIUM
CROWN COVE
ELEVENTH SUPPLEMENTAL
CIC PLAT

This ELEVENTH SUPPLEMENTAL CIC plat is part of the ELEVENTH SUPPLEMENTAL to the declaration recorded as Document No. 507183.002 on this 13th day of February, 2012.

CITY OF BLAINE
COUNTY OF ANOKA
SEC. 10, TWP. 31, RGE. 23
Book 10 CIC pg 14



I, Peter J. Hawkinson, do hereby certify that the work was undertaken by or reviewed and approved by me for this ELEVENTH SUPPLEMENTAL CIC Plat of CIC Number 212, A CONDOMINIUM, CROWN COVE, being located upon:
Lot 14, Block 1, THE LAKES OF RADISSON TWENTY-FOURTH ADDITION, Anoka County, Minnesota,
and the Additional Real Estate is located upon the following described property designated as:
Lots 5 and 15, Block 1, THE LAKES OF RADISSON TWENTY-FOURTH ADDITION,
Anoka County, Minnesota,
and that this CIC plat fully and accurately depicts all information required by Minnesota Statutes, Section 515B.2-110.

Dated this 13 day of January, 2012

[Signature]
Peter J. Hawkinson, Licensed Land Surveyor
Minnesota License No. 42299

STATE OF MINNESOTA
COUNTY OF DAKOTA
The foregoing instrument was acknowledged before me this 13 day of January 2012, by Peter J. Hawkinson.

[Signature]
Nicholas J. Kolarud
Notary Public, Dakota County, Minnesota
My Commission Expires January 31, 2015

I, Paul J. Cherne, pursuant to Minnesota Statutes, Section 515B.2-101(c), do hereby certify that the structural components of the structures containing the units and the mechanical systems serving more than one unit, are substantially completed.

Dated this 13 day of January, 2012

[Signature]
Paul J. Cherne, Licensed Engineer
Minnesota License No. 19860

STATE OF MINNESOTA
COUNTY OF DAKOTA
The foregoing instrument was acknowledged before me this 13 day of January 2012, by Paul J. Cherne, a Licensed Engineer.

[Signature]
Nicholas J. Kolarud
Notary Public, Dakota County, Minnesota
My Commission Expires January 31, 2015

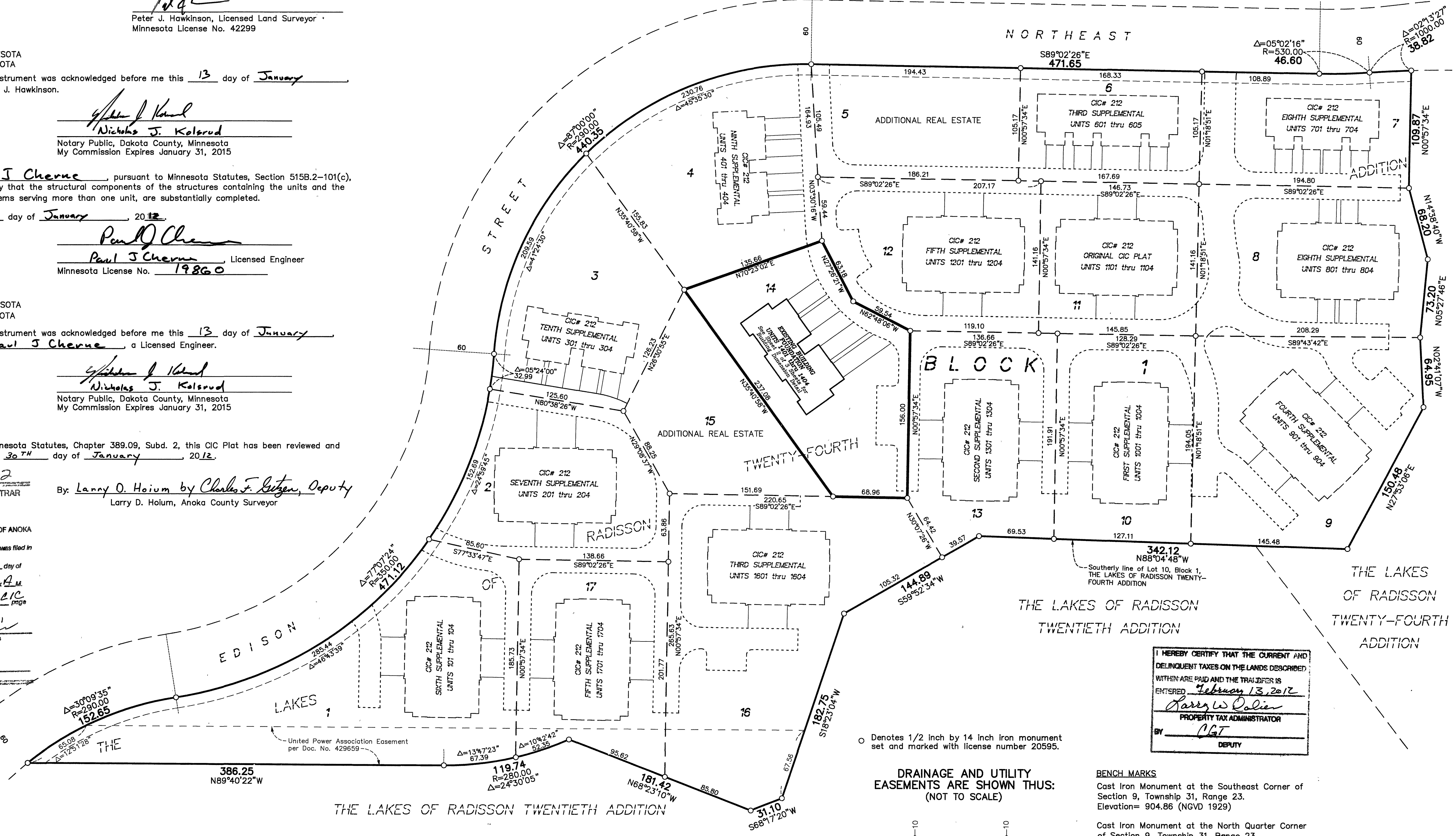
Pursuant to Minnesota Statutes, Chapter 389.09, Subd. 2, this CIC Plat has been reviewed and is approved this 30th day of January, 2012.

507183.002
Office of RECORDER/REGISTRAR
OF TITLES

By: Larry D. Hoium by Charles F. Ritzler, Deputy
Larry D. Hoium, Anoka County Surveyor

STATE OF MINNESOTA COUNTY OF ANOKA
I hereby certify that the within instrument was filed in this office for record on the 13 day of February, 2012 at 11:55 o'clock A.M. and was duly recorded in book 1121C page
[Signature]
Recorder/Registrar of Titles

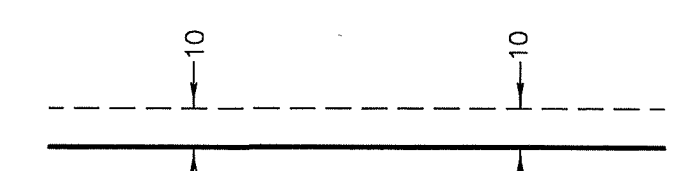
By: *[Signature]*
Deputy



I HEREBY CERTIFY THAT THE CURRENT AND DELINQUENT TAXES ON THE LANDS DESCRIBED WITHIN ARE PAID AND THE TAX DEBTOR IS ENTERED February 13, 2012
[Signature]
PROPERTY TAX ADMINISTRATOR
BY: *[Signature]*
DEPUTY

○ Denotes 1/2 inch by 14 inch iron monument set and marked with license number 20595.

DRAINAGE AND UTILITY EASEMENTS ARE SHOWN THUS: (NOT TO SCALE)



being 10 feet in width and adjoining right-of-way lines unless otherwise shown on this plat.

BENCH MARKS
Cast Iron Monument at the Southeast Corner of Section 9, Township 31, Range 23. Elevation= 904.86 (NGVD 1929)
Cast Iron Monument at the North Quarter Corner of Section 9, Township 31, Range 23. Elevation= 903.09 (NGVD 1929)

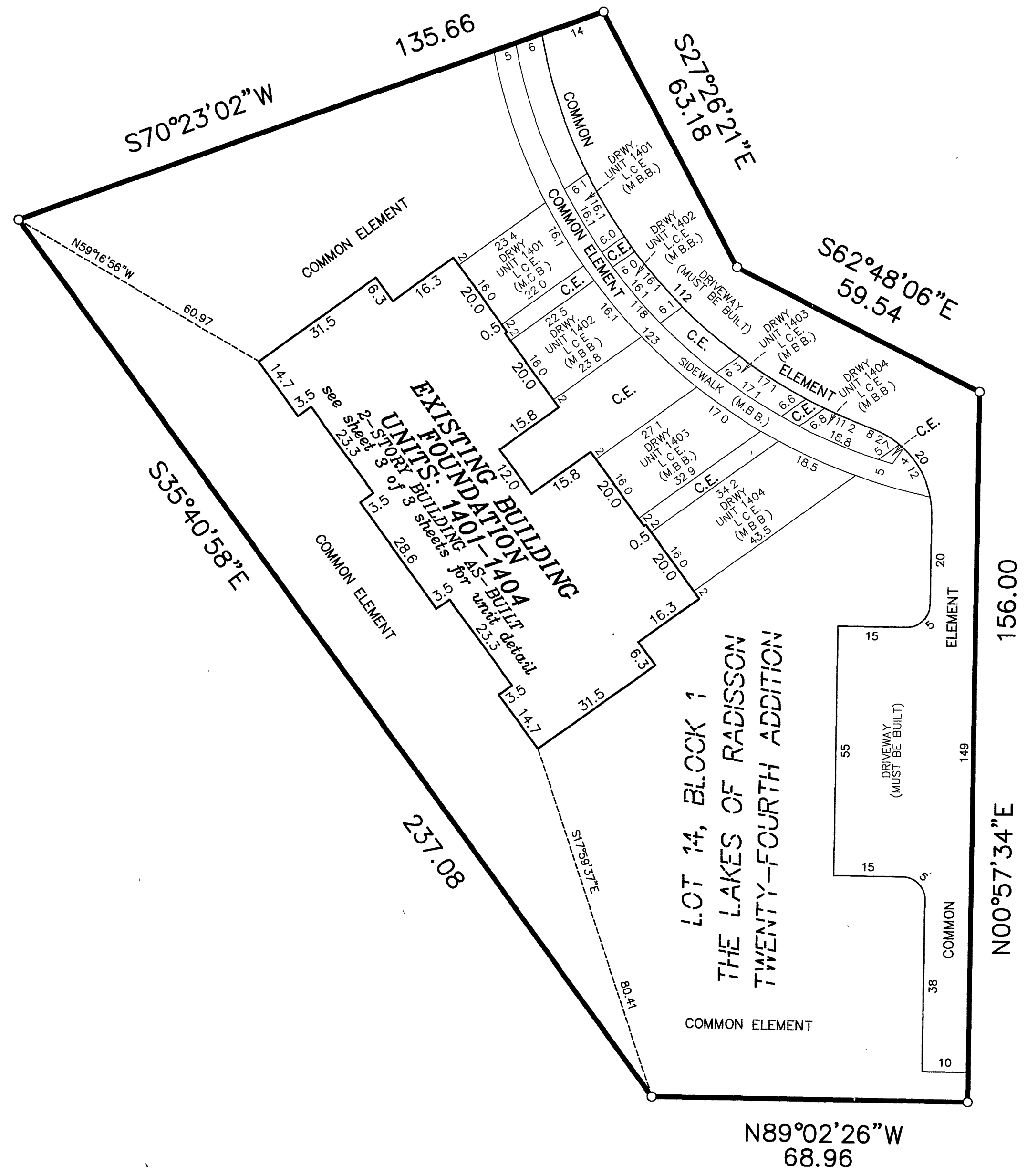
Bearings are based on the southerly line of Lot 10, Block 1, THE LAKES OF RADISSON TWENTY-FOURTH ADDITION, which is assumed to have a bearing of North 88 degrees 04 minutes 48 seconds West.

BUILDING DIMENSION DETAIL
(AS-BUILT)

CIC NUMBER 212 A CONDOMINIUM CROWN COVE ELEVENTH SUPPLEMENTAL CIC PLAT

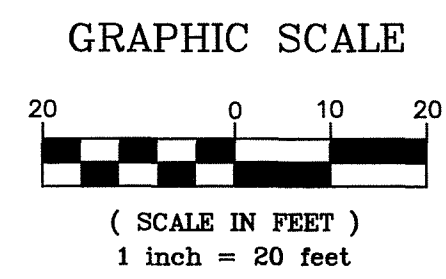
Book 11.C.1C Pg 14
C.R. DOC. NO. 507183.002

CITY OF BLAINE
COUNTY OF ANOKA
SEC. 10, TWP. 31, RGE. 23



- Denotes 1/2 inch by 14 inch iron monument set and marked with license number 20595
- L.C.E. = Limited Common Element
- C.E. = Common Element
- DRWY. = Driveway
- M.B.B. = Must Be Built

Bearings are based on the southerly line of Lot 10, Block 1, THE LAKES OF RADISSON TWENTY-FOURTH ADDITION, which is assumed to have a bearing of North 88 degrees 04 minutes 48 seconds West.

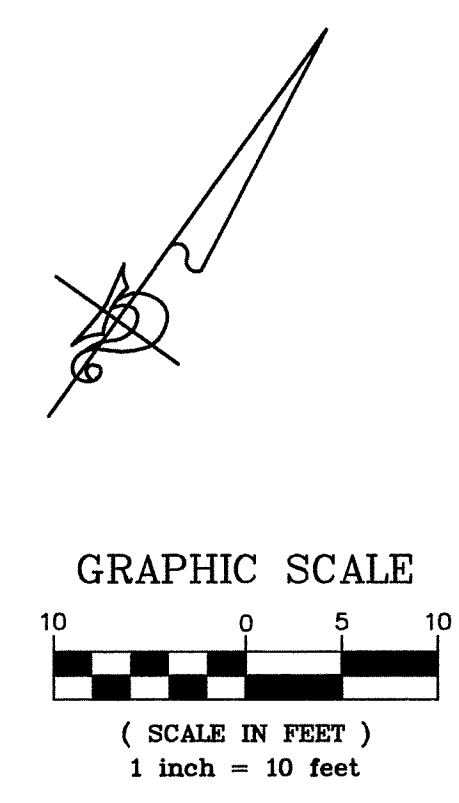
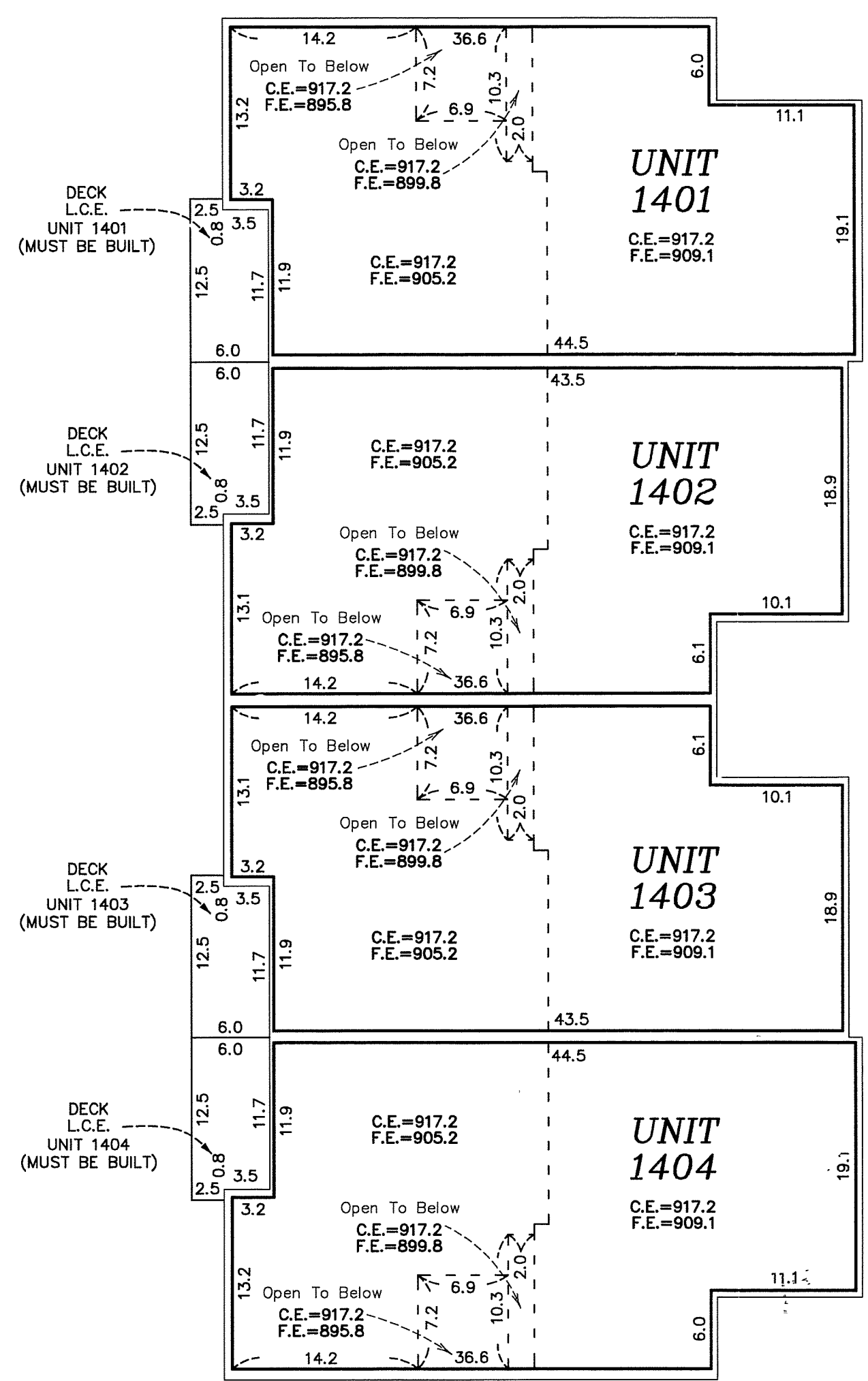
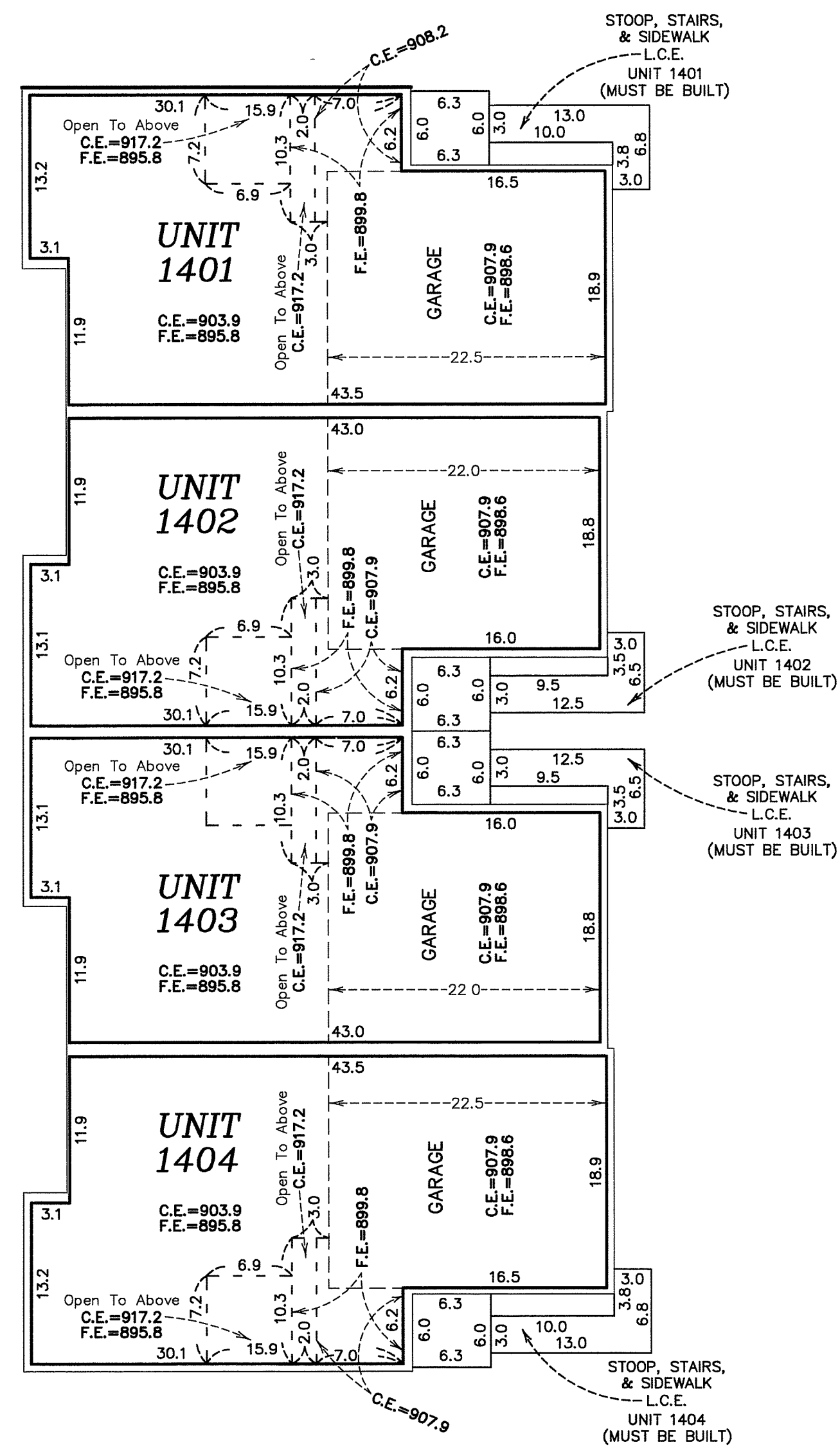


UNIT DETAIL
(AS-BUILT)

CIC NUMBER 212
A CONDOMINIUM
CROWN COVE
ELEVENTH SUPPLEMENTAL
CIC PLAT

LOWER LEVEL

UPPER LEVEL



Elevations are referenced to a benchmark as noted on the site plan on Sheet 1 of 3 Sheets and are shown in feet and tenths of a foot.

F.E. = Floor elevation
C.E. = Ceiling elevation
L.C.E. = Limited Common Element

Interior dimensions shown are measured to the unfinished surface of the walls, floors and ceiling.