

SITE PLAN

CIC NUMBER 212

A CONDOMINIUM CROWN COVE TWELFTH SUPPLEMENTAL CIC PLAT

This TWELFTH SUPPLEMENTAL CIC plat is part of the TWELFTH SUPPLEMENTAL to the Declaration recorded as Document No. 557574.011 on this 18th day of June 2018.

CITY OF BLAINE COUNTY OF ANOKA SEC. 10, TWP. 31, RGE. 23

I, Peter J. Hawkinson, do hereby certify that the work was undertaken by, or reviewed and approved by, me for this TWELFTH SUPPLEMENTAL CIC Plat of CIC Number 212, A CONDOMINIUM, CROWN COVE, being located upon:

Lot 15, Block 1, THE LAKES OF RADISSON TWENTY-FOURTH ADDITION, Anoka County, Minnesota,

and the Additional Real Estate described as:

Lots 5, Block 1, THE LAKES OF RADISSON TWENTY-FOURTH ADDITION, Anoka County, Minnesota, and fully and accurately depicts all information required by Minnesota Statutes, Section 515B.2-110. Dated this 18th day of June 2018.

COUNTY RECORDER/REGISTRAR OF TITLES, County of Anoka, State of Minnesota

I hereby certify that this plat of COMMON INTEREST COMMUNITY NO. 212 was filed in the Office of the County Recorder/Registrar of Titles for public record on this 19th day of June 2018 at 12:18 o'clock P.M. and was duly recorded as Document Number 557574.011.

Signature of Peter J. Hawkinson, Land Surveyor, Minnesota License No. 42299

Signature of Jonell M Sawyer, County Recorder/Registrar of Titles, Deputy

STATE OF MINNESOTA COUNTY OF Dakota. The foregoing instrument was acknowledged before me this 15th day of June 2018, by Peter J. Hawkinson.

Signature and Notary Public information for Nicholas J. Kolrud, Notary Public, Dakota County, Minnesota, Commission Expires 1-31-2020.

I, John M. Molinaro, pursuant to Minnesota Statutes, Section 515B.2-101(c), do hereby certify that the structural components of the structures containing the units and the mechanical systems serving more than one unit, are substantially completed. Dated this 14th day of June 2018.

Signature and License information for John M. Molinaro, Licensed Engineer, Minnesota License No. 45831.

STATE OF MINNESOTA COUNTY OF Dakota. The foregoing instrument was acknowledged before me this 15th day of June 2018, by John M. Molinaro.

Signature and Notary Public information for Nicholas J. Kolrud, Notary Public, Dakota County, Minnesota, Commission Expires 1-31-2020.

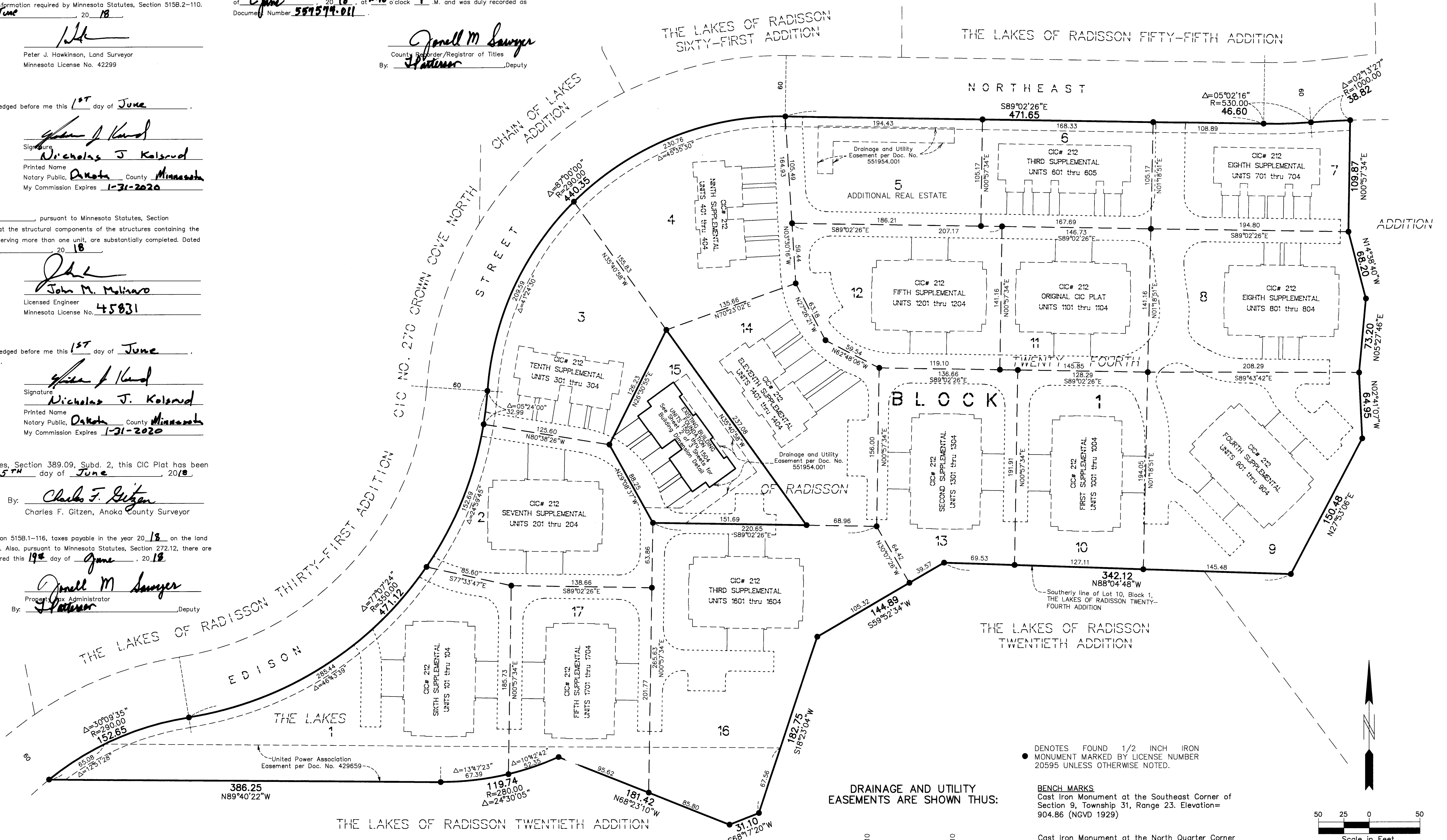
Pursuant to Minnesota Statutes, Section 389.09, Subd. 2, this CIC Plat has been reviewed and approved this 5th day of June 2018.

Signature and Name of Charles F. Citizen, Anoka County Surveyor.

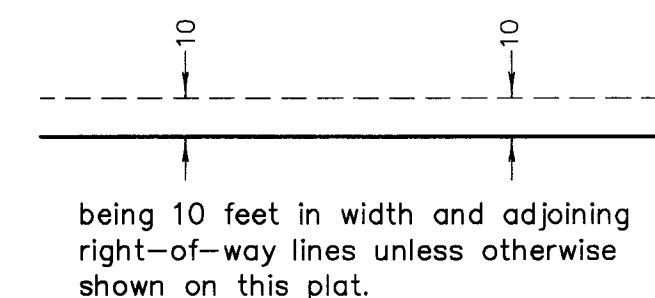
COUNTY AUDITOR/TREASURER,

Pursuant to Minnesota Statutes, Section 515B.1-116, taxes payable in the year 2018 on the land hereinbefore described have been paid. Also, pursuant to Minnesota Statutes, Section 272.12, there are no delinquent taxes and transfer entered this 19th day of June 2018.

Signature and Name of Jonell M Sawyer, Project Tax Administrator, Deputy.



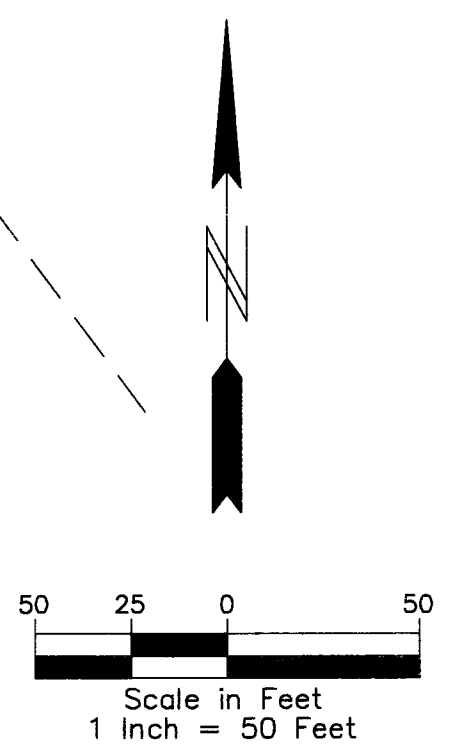
DRAINAGE AND UTILITY EASEMENTS ARE SHOWN THUS:



• DENOTES FOUND 1/2 INCH IRON MONUMENT MARKED BY LICENSE NUMBER 20595 UNLESS OTHERWISE NOTED.

BENCH MARKS: Cast Iron Monument at the Southeast Corner of Section 9, Township 31, Range 23. Elevation= 904.86 (NGVD 1929). Cast Iron Monument at the North Quarter Corner of Section 9, Township 31, Range 23. Elevation= 903.09 (NGVD 1929).

Bearings are based on the southerly line of Lot 10, Block 1, THE LAKES OF RADISSON TWENTY-FOURTH ADDITION, which is assumed to have a bearing of North 88 degrees 04 minutes 48 seconds West.



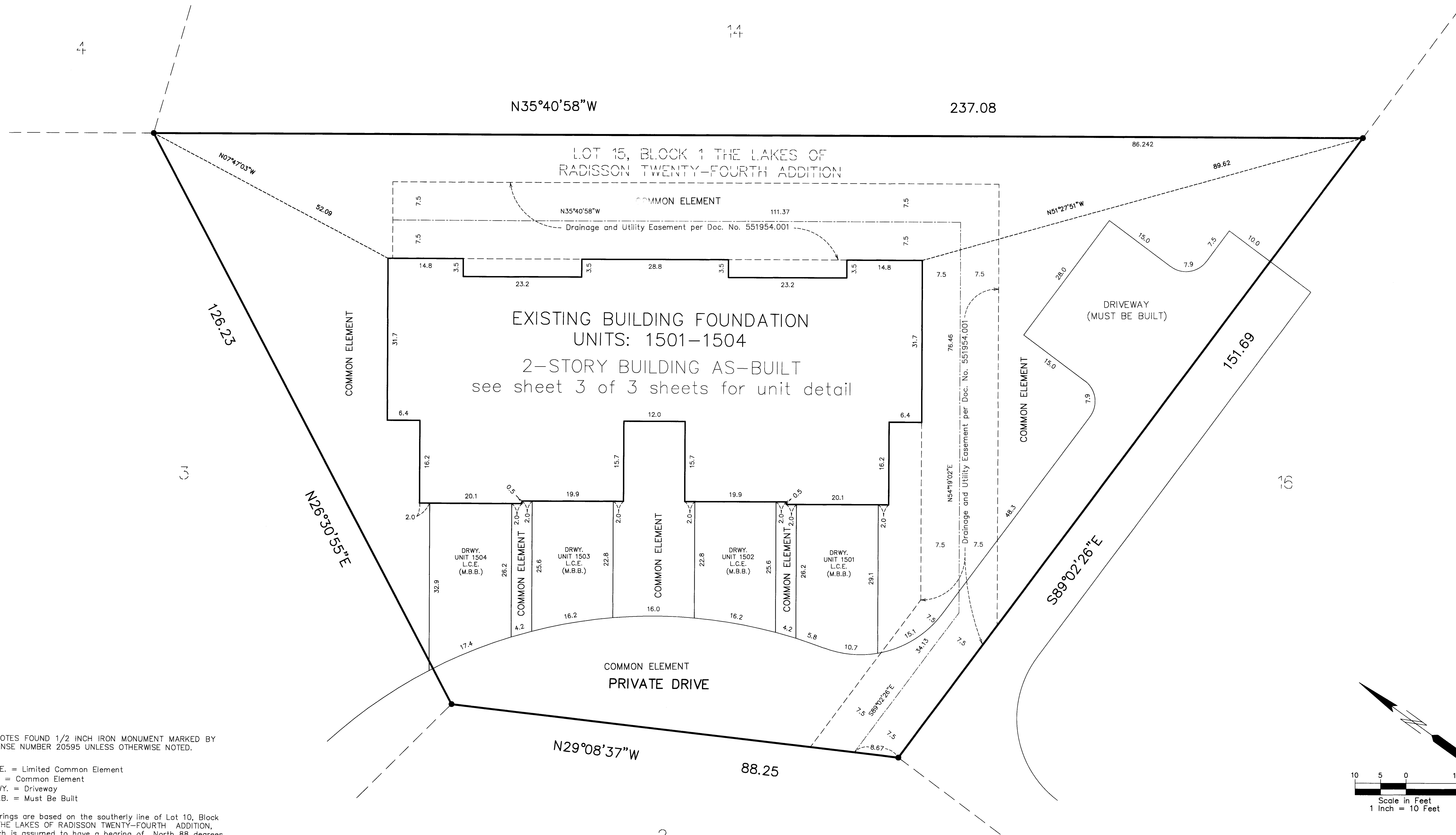
PIONEER Engineering \$56.00 CIVIL ENGINEERS LAND PLANNERS LAND SURVEYORS LANDSCAPE ARCHITECTS

BUILDING DIMENSION DETAIL
(AS-BUILT)

CIC NUMBER 212
A CONDOMINIUM
CROWN COVE
TWELFTH SUPPLEMENTAL CIC PLAT

C.R. DOC. NO. 557574.001

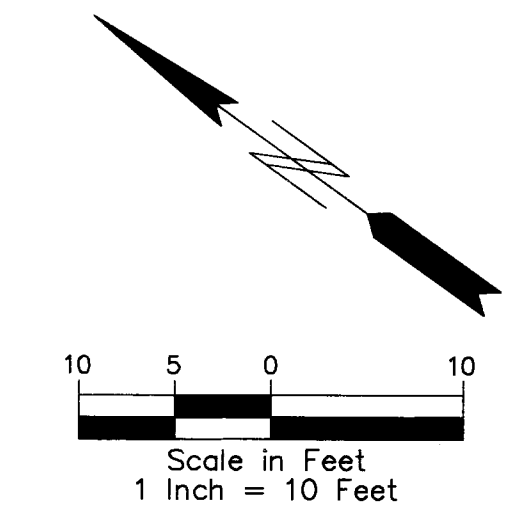
CITY OF BLAINE
COUNTY OF ANOKA
SEC. 10, TWP. 31, RGE. 23



● DENOTES FOUND 1/2 INCH IRON MONUMENT MARKED BY LICENSE NUMBER 20595 UNLESS OTHERWISE NOTED.

L.C.E. = Limited Common Element
C.E. = Common Element
DRWY. = Driveway
M.B.B. = Must Be Built

Bearings are based on the southerly line of Lot 10, Block 1, THE LAKES OF RADISSON TWENTY-FOURTH ADDITION, which is assumed to have a bearing of North 88 degrees 04 minutes 48 seconds West.



UNIT DETAIL
(AS-BUILT)

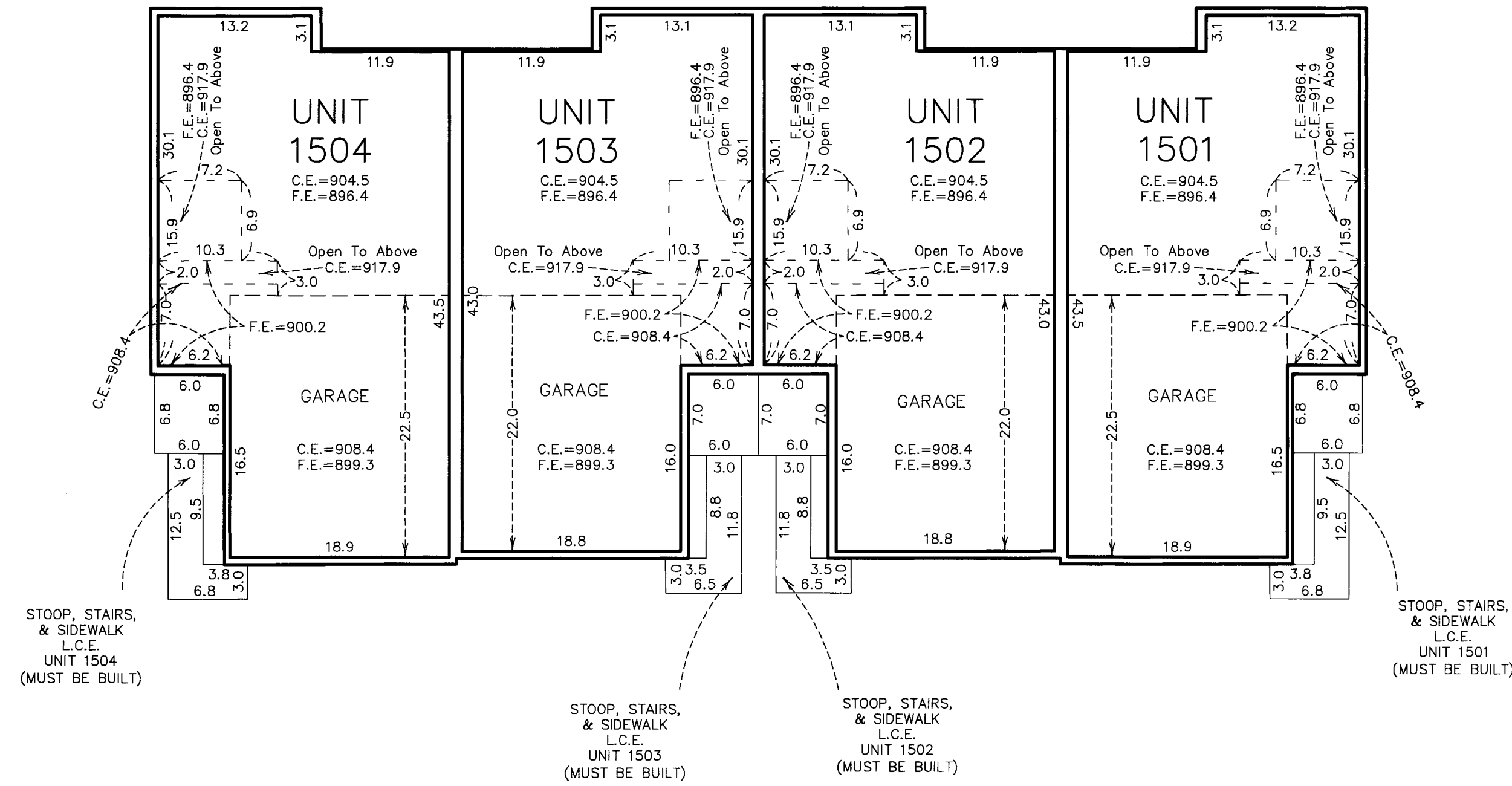
CIC NUMBER 212

A CONDOMINIUM
CROWN COVE
TWELFTH SUPPLEMENTAL CIC PLAT

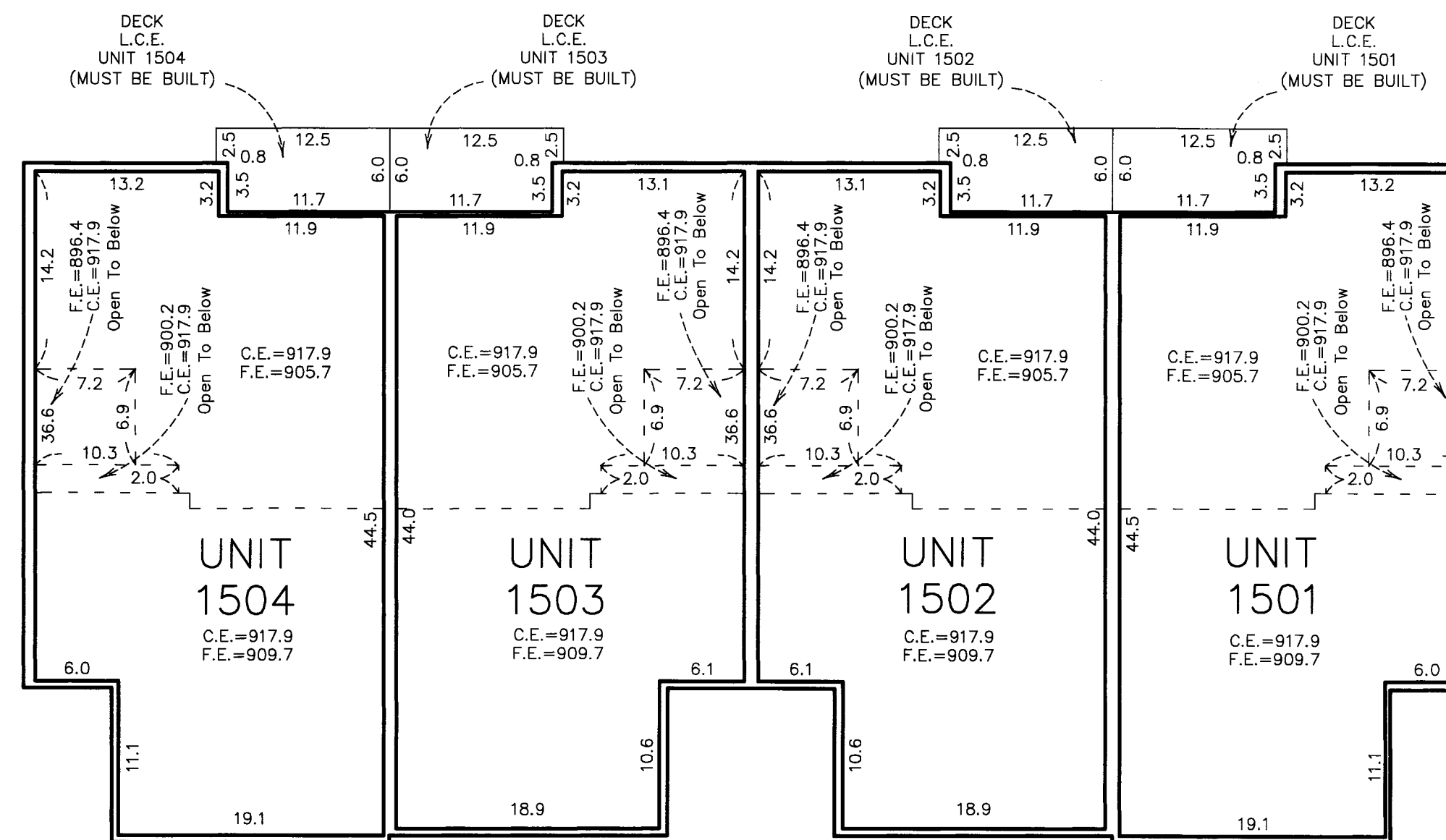
C.R. DOC. NO. 557574.011

CITY OF BLAINE
COUNTY OF ANOKA
SEC. 10, TWP. 31, RGE. 23

LOWER LEVEL



UPPER LEVEL



Elevations are referenced to a benchmark as noted on the site plan on Sheet 1 of 3 Sheets and are shown in feet and tenths of a foot.

F.E. = Floor elevation
C.E. = Ceiling elevation
L.C.E. = Limited Common Element

Interior dimensions shown are measured to the unfinished surface of the walls, floors and ceiling.

