



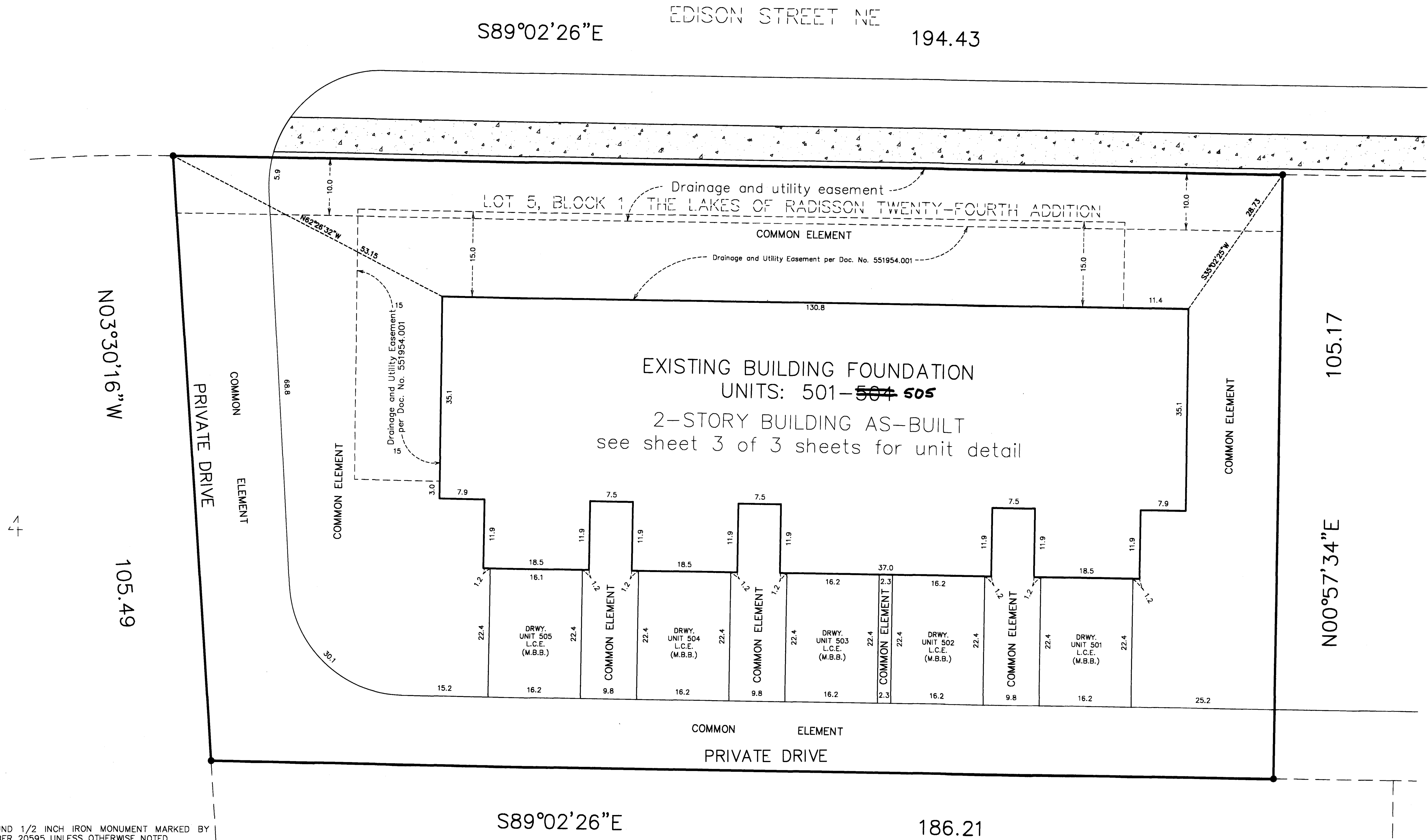
# CIC NUMBER 212

A CONDOMINIUM  
CROWN COVE  
THIRTEENTH SUPPLEMENTAL  
CIC PLAT

C.R. DOC. NO. 558798.003

CITY OF BLAINE  
COUNTY OF ANOKA  
SEC. 10, TWP. 31, RGE. 23

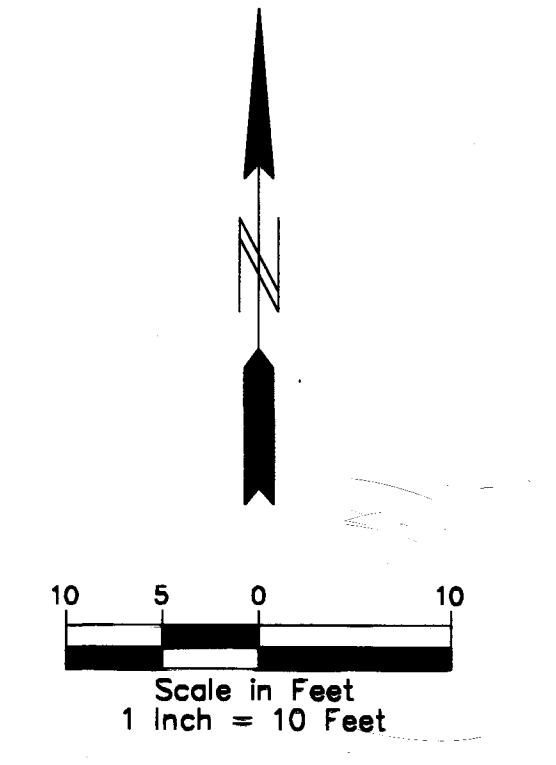
BUILDING DIMENSION DETAIL  
(AS-BUILT)



● DENOTES FOUND 1/2 INCH IRON MONUMENT MARKED BY LICENSE NUMBER 20595 UNLESS OTHERWISE NOTED.

L.C.E. = Limited Common Element  
 DRWY. = Driveway  
 M.B.B. = Must Be Built  
 [Symbol] = Denotes concrete

Bearings are based on the southerly line of Lot 10, Block 1, THE LAKES OF RADISSON TWENTY-FOURTH ADDITION, which is assumed to have a bearing of North 88 degrees 04 minutes 48 seconds West.



# CIC NUMBER 212

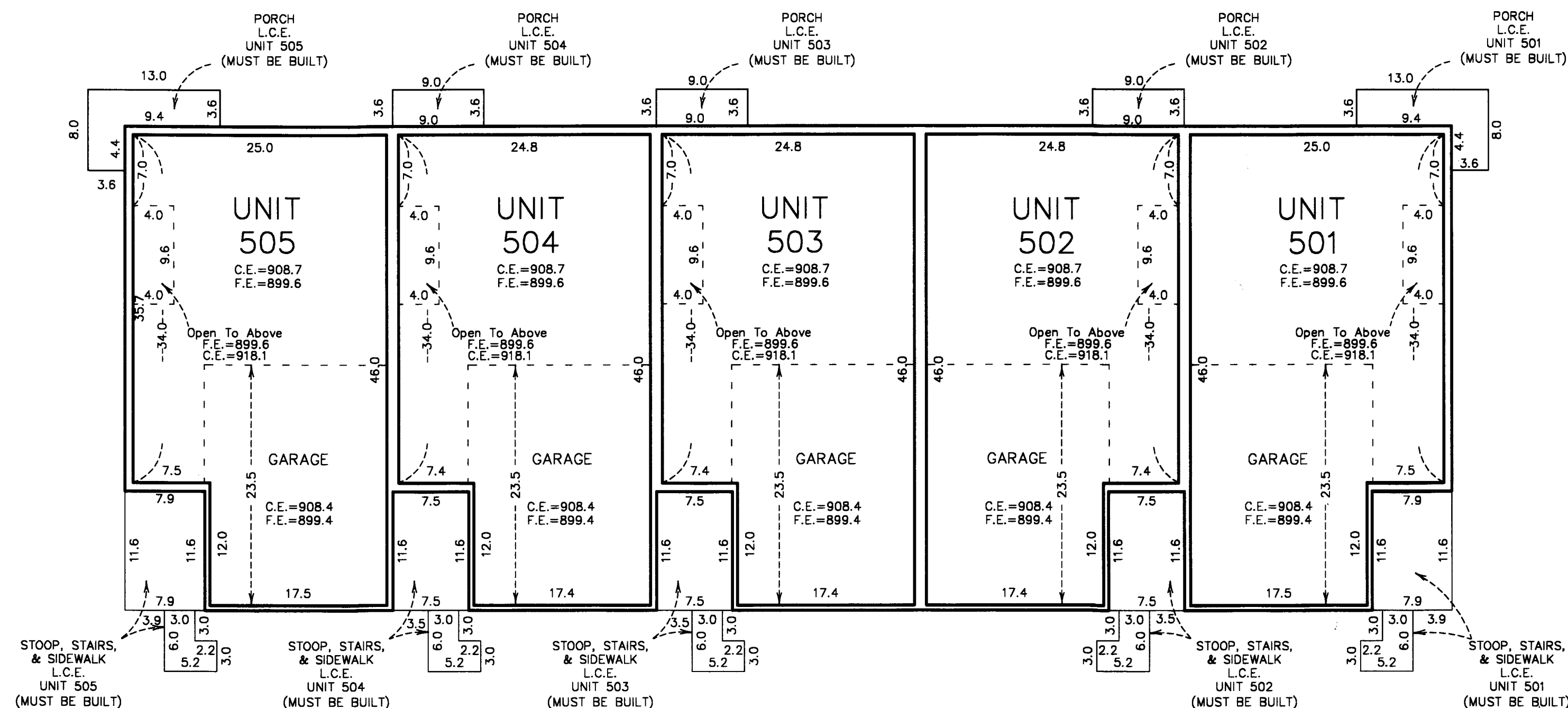
## A CONDOMINIUM CROWN COVE THIRTEENTH SUPPLEMENTAL CIC PLAT

C.R. DOC. NO. 558798.003

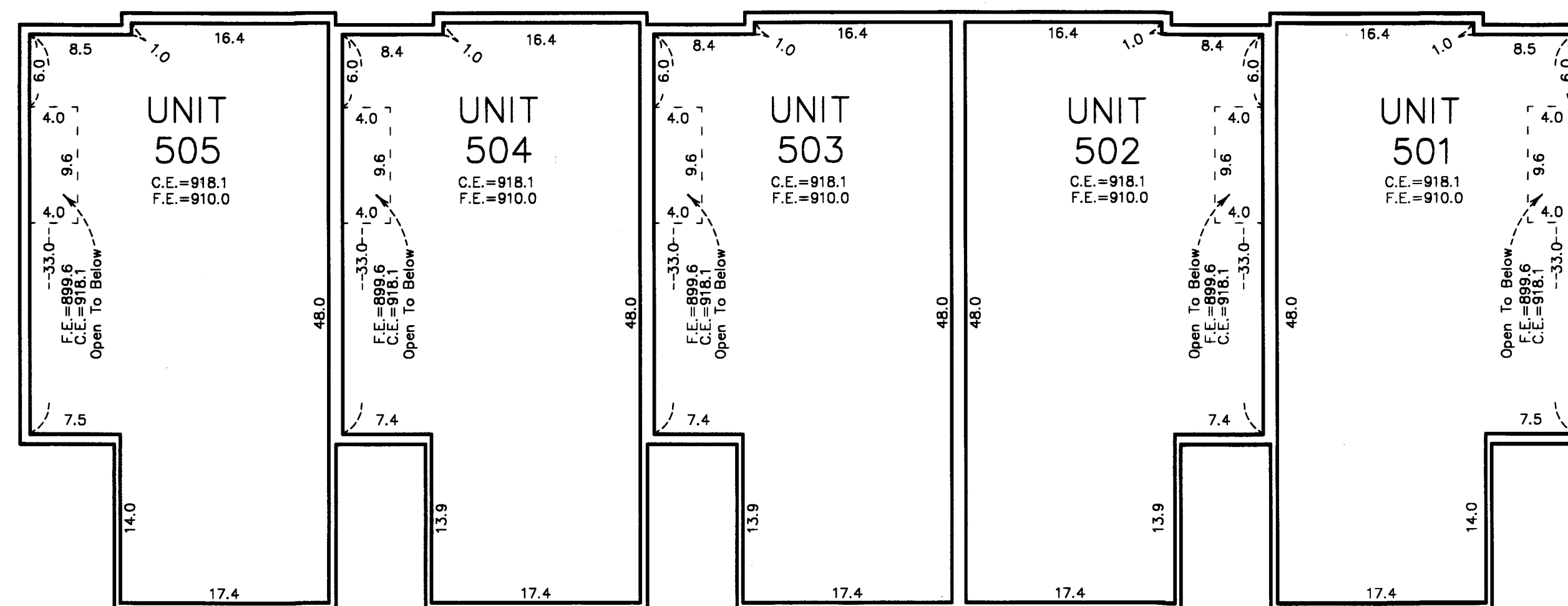
CITY OF BLAINE  
COUNTY OF ANOKA  
SEC. 10, TWP. 31, RGE. 23

UNIT DETAIL  
(AS-BUILT)

### LOWER LEVEL



### UPPER LEVEL



Elevations are referenced to a benchmark as noted on the site plan on Sheet 1 of 3 Sheets and are shown in feet and tenths of a foot.

F.E. = Floor elevation  
C.E. = Ceiling elevation  
L.C.E. = Limited Common Element

Interior dimensions shown are measured to the unfinished surface of the walls, floors and ceiling.



Scale in Feet  
1 Inch = 10 Feet