

C C NUMBER 218

BK II OF CIC Plat

A CONDOMINIUM TOWN CENTER GARDENS CONDOMINIUM SECOND SUPPLEMENTAL CIC PLAT

This SECOND SUPPLEMENTAL CIC Plat is part of the SECOND SUPPLEMENTAL to the Declaration recorded as Document No. 2043794.001 on this 20 day of NOVEMBER, 2012.

CITY OF RAMSEY
COUNTY OF ANOKA
SEC. 28, TWP. 32, RNG. 25

I, Peter J. Hawkinson, do hereby certify that the work was undertaken by or reviewed and approved by me for this SECOND SUPPLEMENTAL CIC Plat of CIC Number 218, TOWN CENTER GARDENS CONDOMINIUM, a condominium, being located upon:

Lot 2, Block 2, TOWN CENTER GARDENS SECOND ADDITION, Anoka County, Minnesota, and the Additional Real Estate is located upon the following described property designated as:
Lot 3, Block 2, TOWN CENTER GARDENS SECOND ADDITION, Anoka County, Minnesota,

and that this CIC plat fully and accurately depicts all information required by Minnesota Statutes, Section 515B.2-110.

Dated this 19 day of November, 2012.

Peter J. Hawkinson
Peter J. Hawkinson, Land Surveyor
Minnesota License No. 42299

STATE OF MINNESOTA
COUNTY OF DAKOTA

The foregoing instrument was acknowledged before me this 19 day of November, 2012, by Peter J. Hawkinson.

Nicholas J. Kolsrud
Notary Public, Dakota County, Minnesota
My Commission Expires January 31, 2015

I, Paul Chenna, pursuant to Minnesota Statutes, Section 515B.2-101(c), do hereby certify that the structural components of the structures containing the units and the mechanical systems serving more than one unit, are substantially completed.

Dated this 19 day of November, 2012.

Paul Chenna
Paul Chenna, Licensed Engineer
Minnesota License No. 19800

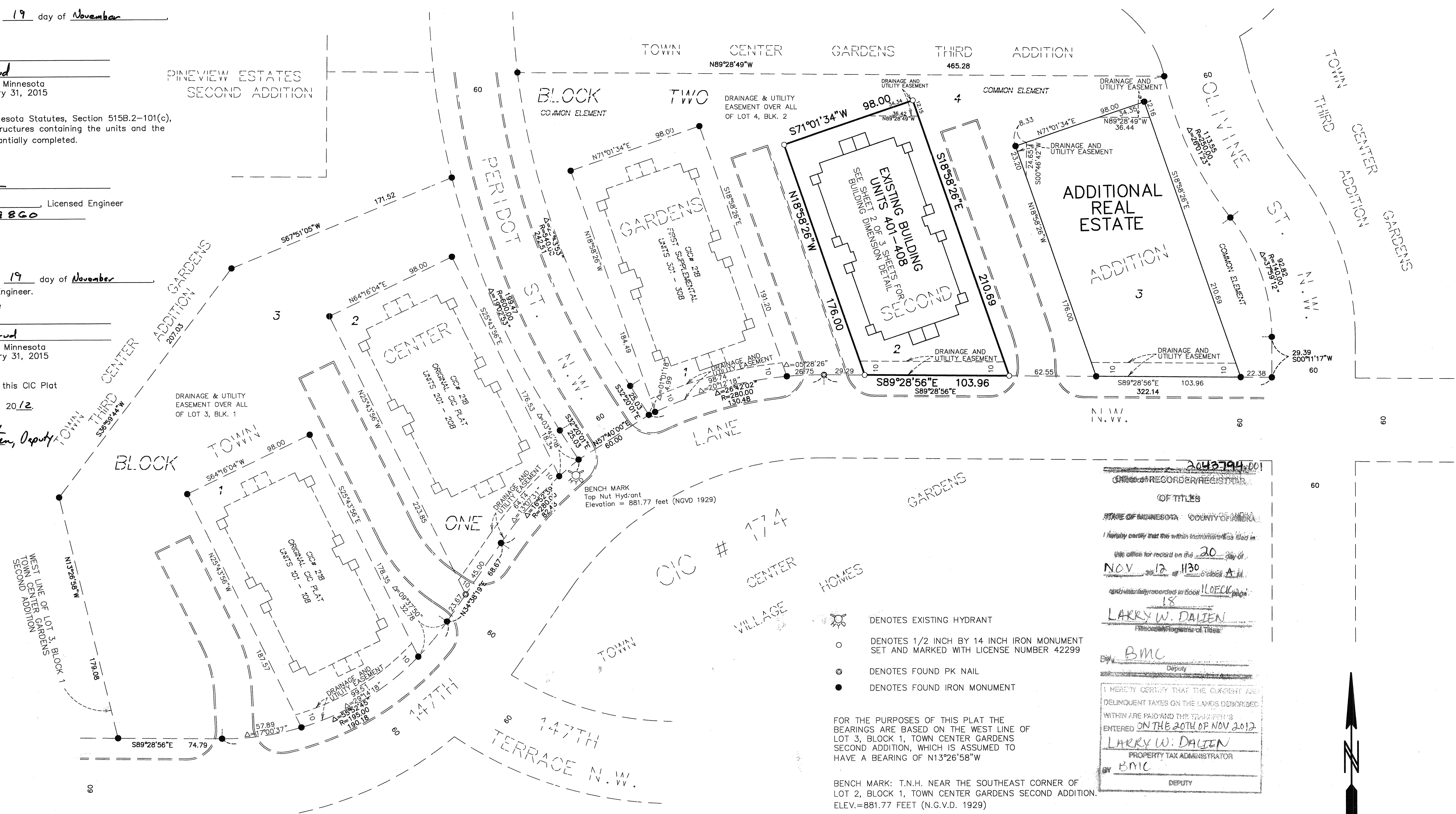
STATE OF MINNESOTA
COUNTY OF DAKOTA

The foregoing instrument was acknowledged before me this 19 day of November, 2012, by Paul Chenna, a Licensed Engineer.

Nicholas J. Kolsrud
Notary Public, Dakota County, Minnesota
My Commission Expires January 31, 2015

Pursuant to Minnesota Statutes, Chapter 389.09, Subd. 2, this CIC Plat has been reviewed and is approved this 20th day of November, 2012.

By: Larry D. Hoium by Charlotte F. Reizen, Deputy
Larry D. Hoium, Anoka County Surveyor



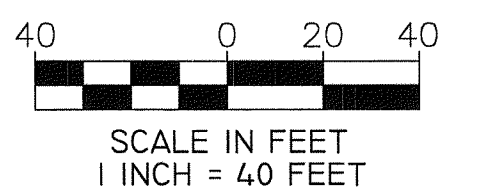
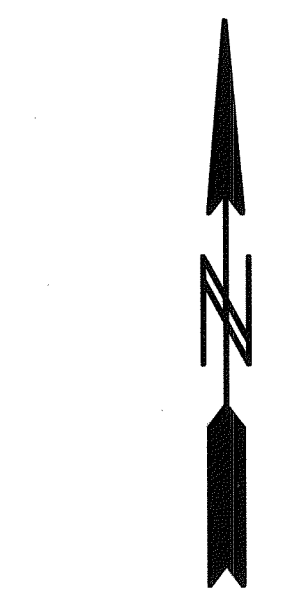
- DENOTES EXISTING HYDRANT
- DENOTES 1/2 INCH BY 14 INCH IRON MONUMENT SET AND MARKED WITH LICENSE NUMBER 42299
- DENOTES FOUND PK NAIL
- DENOTES FOUND IRON MONUMENT

FOR THE PURPOSES OF THIS PLAT THE BEARINGS ARE BASED ON THE WEST LINE OF LOT 3, BLOCK 1, TOWN CENTER GARDENS SECOND ADDITION, WHICH IS ASSUMED TO HAVE A BEARING OF N13°26'58"W

BENCH MARK: T.N.H. NEAR THE SOUTHEAST CORNER OF LOT 2, BLOCK 1, TOWN CENTER GARDENS SECOND ADDITION. ELEV.=881.77 FEET (N.G.V.D. 1929)

ALL DRAINAGE AND UTILITY EASEMENTS SHOWN ARE DEDICATED ON THE PLAT OF TOWN CENTER GARDENS SECOND ADDITION

2043794.001
OFFICE OF RECORDER/REGISTRAR
OF TITLES
STATE OF MINNESOTA COUNTY OF ANOKA
I hereby certify that the within instrument has been filed in
the office for record on the 20 day of
NOV 2012 at 11:30 o'clock A.M.
and is duly recorded in book 110626 page
18
LARRY W. DALIEN
Recorder/Registrar of Titles
By: BMC
Deputy
I HEREBY CERTIFY THAT THE CURRENT ASSESSMENT DELINQUENT TAXES ON THE LANDS DESCRIBED WITHIN ARE PAID AND THE TAX DEBT IS ENTERED ON THE 20TH OF NOV 2012
LARRY W. DALIEN
PROPERTY TAX ADMINISTRATOR
BY: BMC
DEPUTY



BUILDING DIMENSION DETAIL

CIC NUMBER 218
A CONDOMINIUM
TOWN CENTER GARDENS CONDOMINIUM
SECOND SUPPLEMENTAL CIC PLAT

C.R. DOC. NO. 2043794.001

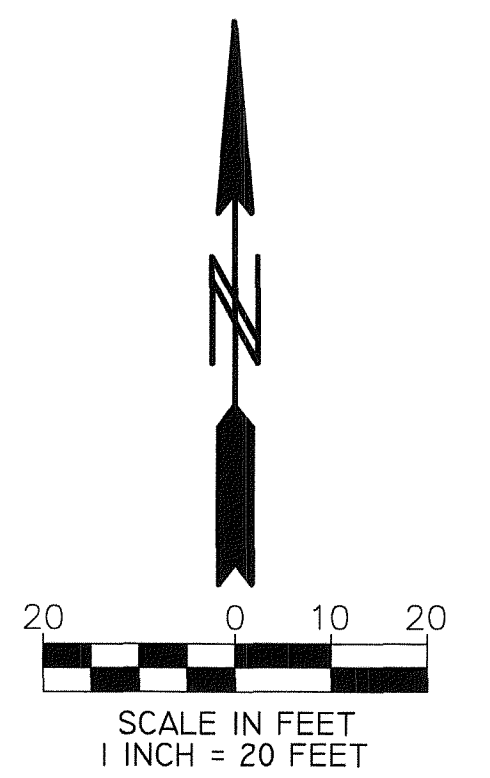
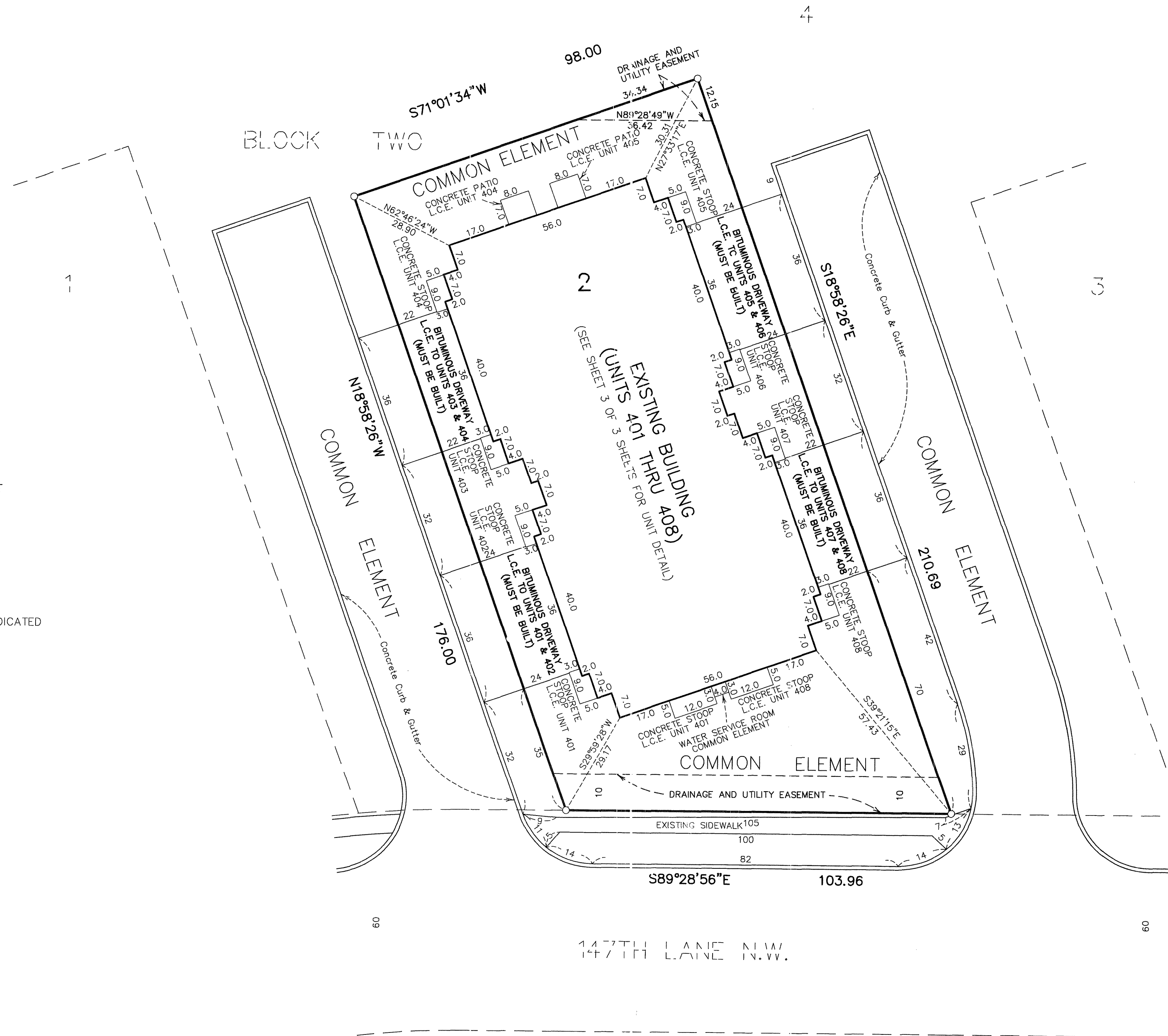
CITY OF RAMSEY
COUNTY OF ANOKA
SEC. 28, TWP. 32, RNG. 25

○ DENOTES 1/2 INCH BY 14 INCH IRON MONUMENT SET AND MARKED WITH LICENSE NUMBER 42299

FOR PURPOSES OF THIS PLAT THE BEARINGS ARE BASED ON THE WEST LINE OF LOT 3, BLOCK 1, TOWN CENTER GARDENS SECOND ADDITION, WHICH IS ASSUMED TO HAVE A BEARING OF N13°26'58"W.

ALL DRAINAGE AND UTILITY EASEMENTS SHOWN ARE DEDICATED ON THE PLAT OF TOWN CENTER GARDENS.

L.C.E. = LIMITED COMMON ELEMENT



UNIT DETAIL

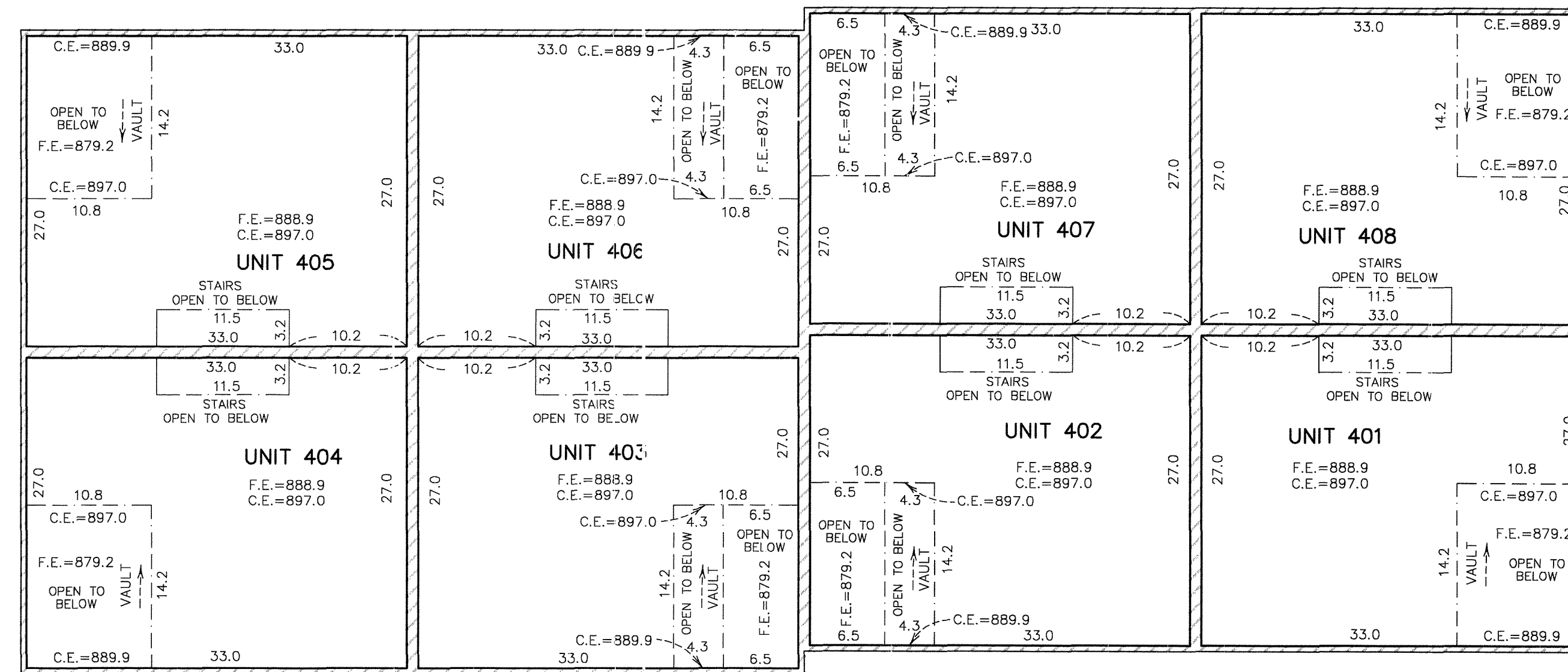
CIC NUMBER 218
 A CONDOMINIUM
 TOWN CENTER GARDENS CONDOMINIUM
 SECOND SUPPLEMENTAL CIC PLAT

BK 11 OF CIC Plat 8

C.R. DOC. NO. 2043794.001

CITY OF RAMSEY
 COUNTY OF ANOKA
 SEC. 28, TWP. 32, RNG. 25

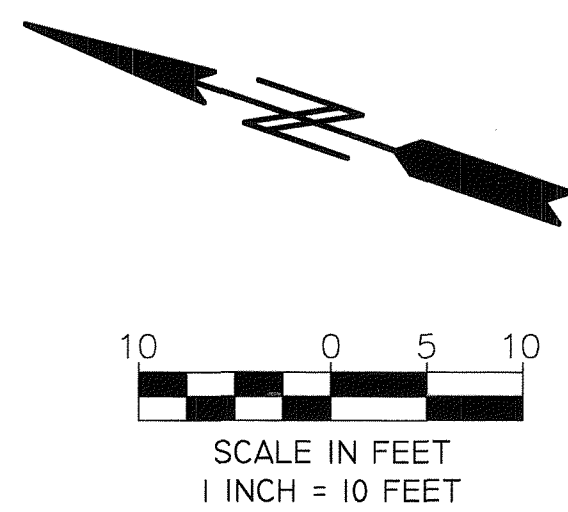
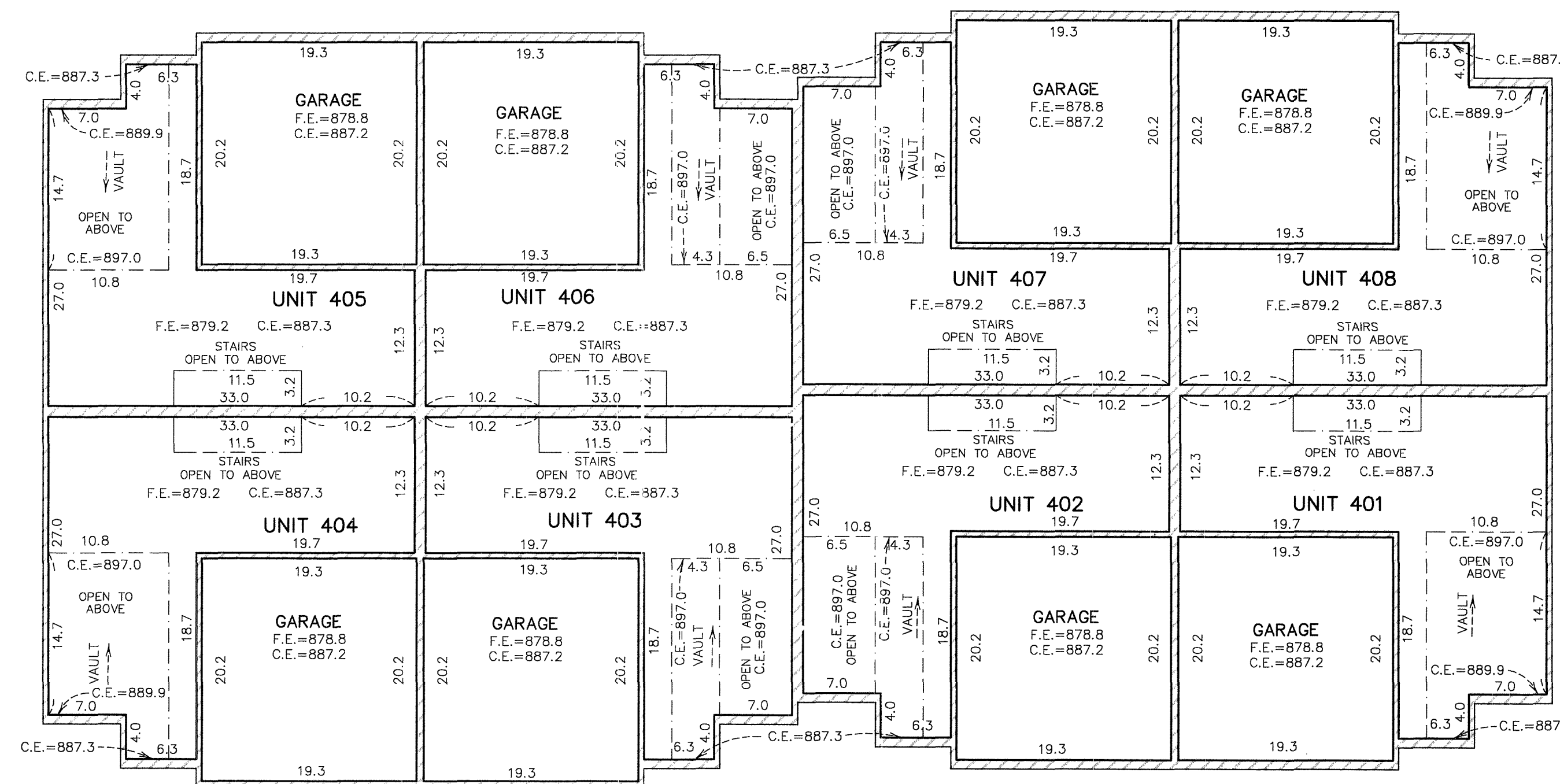
UPPER LEVEL



Interior dimensions shown are measured to the unfinished surface of the walls, floors and ceiling.

Elevations are referred to a benchmark as shown on the Site Plan on Sheet 1 of 3 sheets and are shown in feet and tenths of a foot.

C.E. = CEILING ELEVATION
 F.E. = FLOOR ELEVATION



MAIN LEVEL