

OFFICIAL PLAT

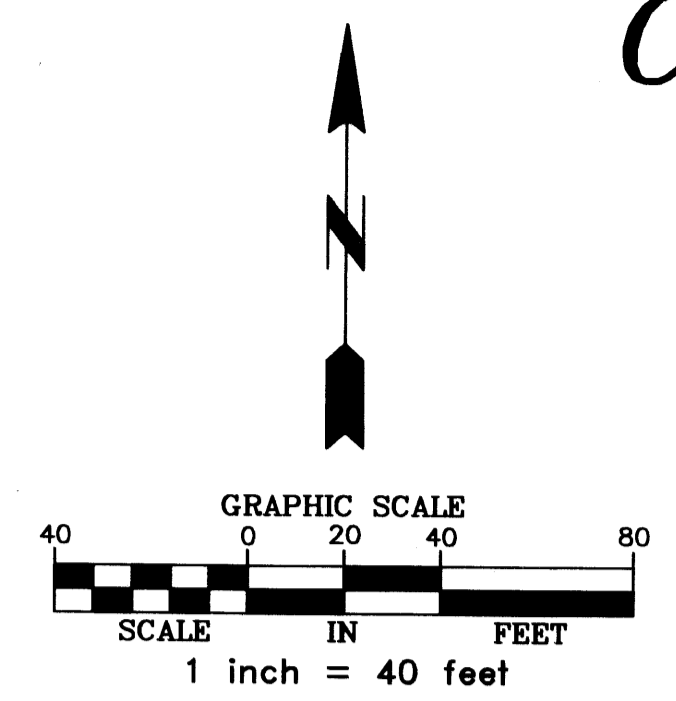
COMMON INTEREST COMMUNITY NUMBER 218

A CONDOMINIUM
TOWN CENTER GARDENS CONDOMINIUM
CIC PLAT

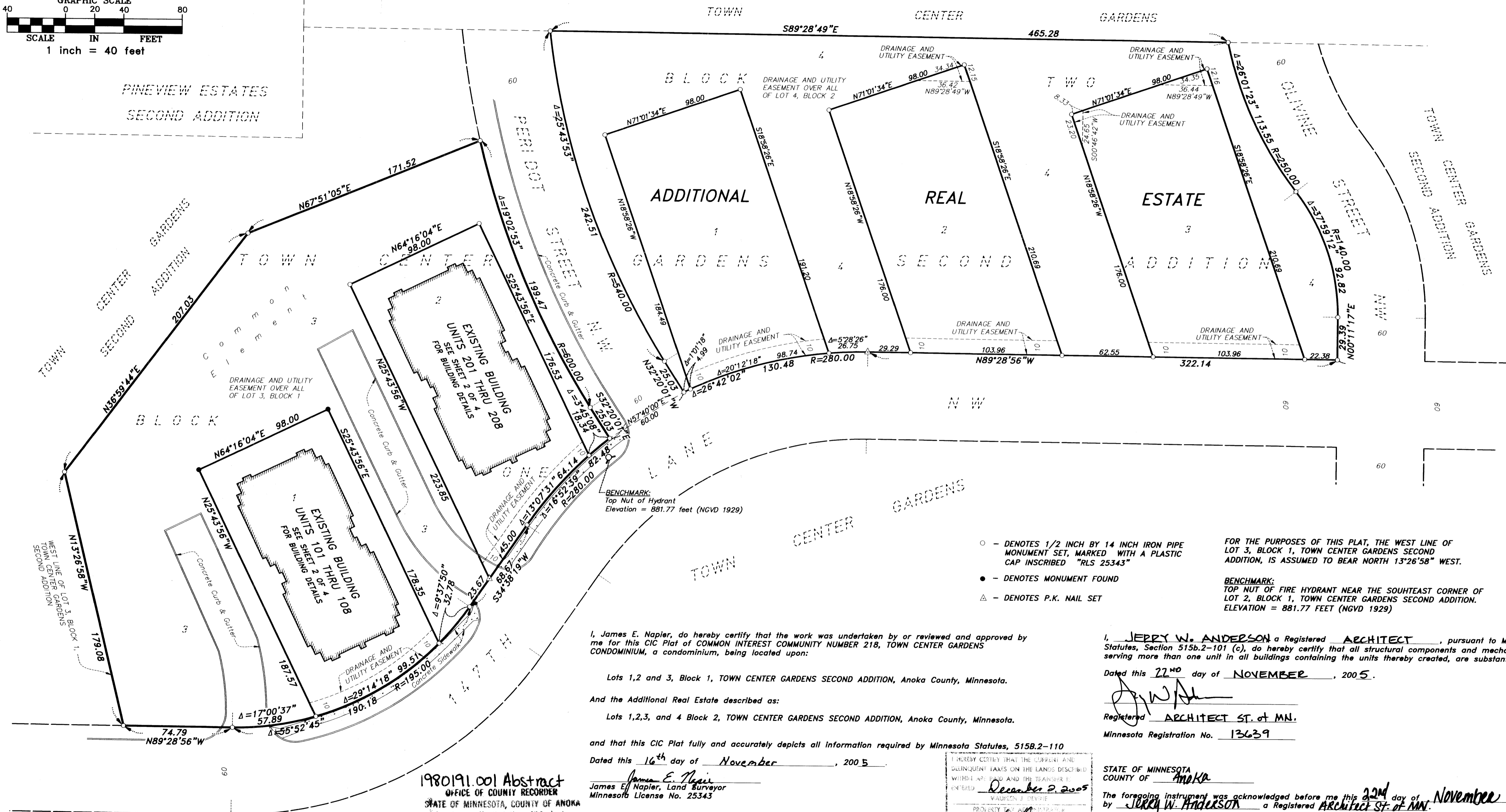
Bk 9 of CIC pg 47

This CIC Plat is part of the Declaration recorded as Document No. 1980191.001 on this 2 day of December, 2005. Anoka County Recorder

CITY OF RAMSEY
COUNTY OF ANOKA
SEC. 28, T32, R25.



PINEVIEW ESTATES
SECOND ADDITION



- - DENOTES 1/2 INCH BY 14 INCH IRON PIPE MONUMENT SET, MARKED WITH A PLASTIC CAP INSCRIBED "RLS 25343"
 - - DENOTES MONUMENT FOUND
 - △ - DENOTES P.K. NAIL SET
- FOR THE PURPOSES OF THIS PLAT, THE WEST LINE OF LOT 3, BLOCK 1, TOWN CENTER GARDENS SECOND ADDITION, IS ASSUMED TO BEAR NORTH 13°26'58" WEST.
- BENCHMARK:
TOP NUT OF FIRE HYDRANT NEAR THE SOUTHEAST CORNER OF LOT 2, BLOCK 1, TOWN CENTER GARDENS SECOND ADDITION.
ELEVATION = 881.77 FEET (NGVD 1929)

I, James E. Napier, do hereby certify that the work was undertaken by or reviewed and approved by me for this CIC Plat of COMMON INTEREST COMMUNITY NUMBER 218, TOWN CENTER GARDENS CONDOMINIUM, a condominium, being located upon:

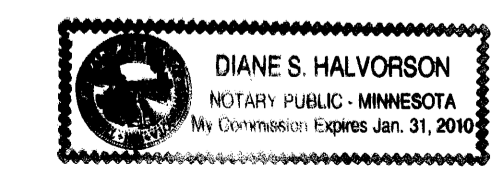
- Lots 1, 2 and 3, Block 1, TOWN CENTER GARDENS SECOND ADDITION, Anoka County, Minnesota.
- And the Additional Real Estate described as:
- Lots 1, 2, 3, and 4 Block 2, TOWN CENTER GARDENS SECOND ADDITION, Anoka County, Minnesota.

and that this CIC Plat fully and accurately depicts all information required by Minnesota Statutes, 515B.2-110
Dated this 16th day of November, 2005.

1980191.001 Abstract
OFFICE OF COUNTY RECORDER
STATE OF MINNESOTA, COUNTY OF ANOKA
I hereby certify that the within instrument was filed in this office for record on 2 Dec 2005
1:28 P
in book 8CIC page 47
Maureen J Devine
By: LKE

James E. Napier
James E. Napier, Land Surveyor
Minnesota License No. 25343

State of Minnesota
County of ANOKA
The foregoing surveyor's certificate was acknowledged before me this 16th day of November, 2005, by James E. Napier, Land Surveyor.
Diane S. Halvorson
Notary Public, Anoka County, Minnesota.
My commission expires: Jan. 31, 2010



I, JERRY W. ANDERSON a Registered ARCHITECT, pursuant to Minnesota Statutes, Section 515b.2-101 (c), do hereby certify that all structural components and mechanical systems serving more than one unit in all buildings containing the units thereby created, are substantially complete.

Dated this 22nd day of NOVEMBER, 2005.
J. W. Anderson
Registered ARCHITECT ST. OF MN.
Minnesota Registration No. 13639

STATE OF MINNESOTA
COUNTY OF ANOKA
The foregoing instrument was acknowledged before me this 22nd day of November, 2005, by JERRY W. ANDERSON a Registered ARCHITECT ST. OF MN.

Kristen L. Steiberg
Notary Public, Anoka County, Minnesota
My commission expires 1/31/09



This CIC Plat has been reviewed and is approved this 1st day of DECEMBER, 2005.

By: Larry D. [Signature]
Anoka County Surveyor

MIDWEST
Land Surveyors & Civil Engineers, Inc.
\$56.00

COMMON INTEREST COMMUNITY NUMBER 218

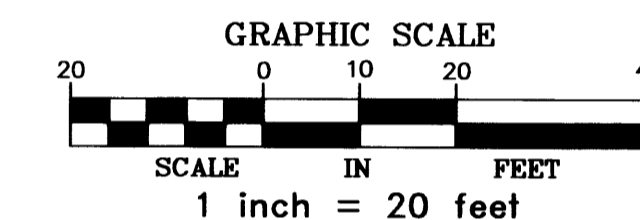
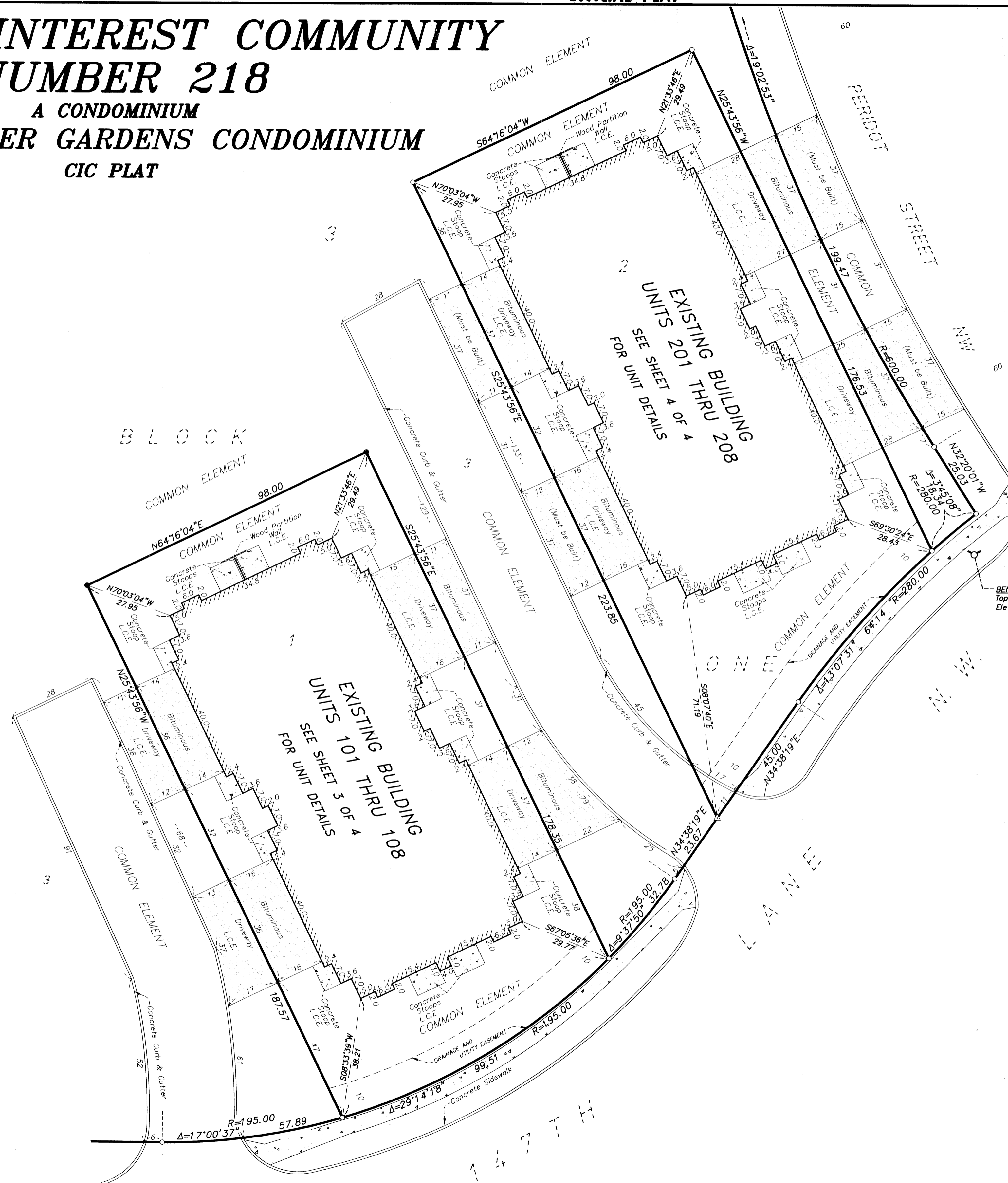
A CONDOMINIUM
TOWN CENTER GARDENS CONDOMINIUM
CIC PLAT

BK8ofCICp947

This CIC Plat is part of the Declaration recorded as
Document No. _____
on this ____ day of _____, 20____.
Anoka County Recorder

CITY OF RAMSEY
COUNTY OF ANOKA
SEC. 28, T32, R25.

SITE PLAN

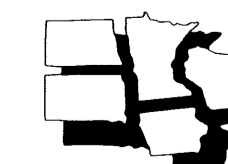


BENCHMARK:
Top Nut of Hydrant
Elevation = 881.77 feet (NGVD 1929)

- - DENOTES 1/2 INCH BY 14 INCH IRON PIPE MONUMENT SET, MARKED WITH A PLASTIC CAP INSCRIBED "RLS 25343"
- - DENOTES MONUMENT FOUND
- △ - DENOTES P.K. NAIL SET
- L.C.E. - DENOTES LIMITED COMMON ELEMENT

FOR THE PURPOSES OF THIS PLAT, THE WEST LINE OF LOT 3, BLOCK 1, TOWN CENTER GARDENS SECOND ADDITION, IS ASSUMED TO BEAR NORTH 13°26'58" WEST.

BENCHMARK:
TOP NUT OF FIRE HYDRANT NEAR THE SOUTHEAST CORNER OF LOT 2, BLOCK 1, TOWN CENTER GARDENS SECOND ADDITION.
ELEVATION = 881.77 FEET (NGVD 1929)



MIDWEST
Land Surveyors & Civil Engineers, Inc.

COMMON INTEREST COMMUNITY NUMBER 218

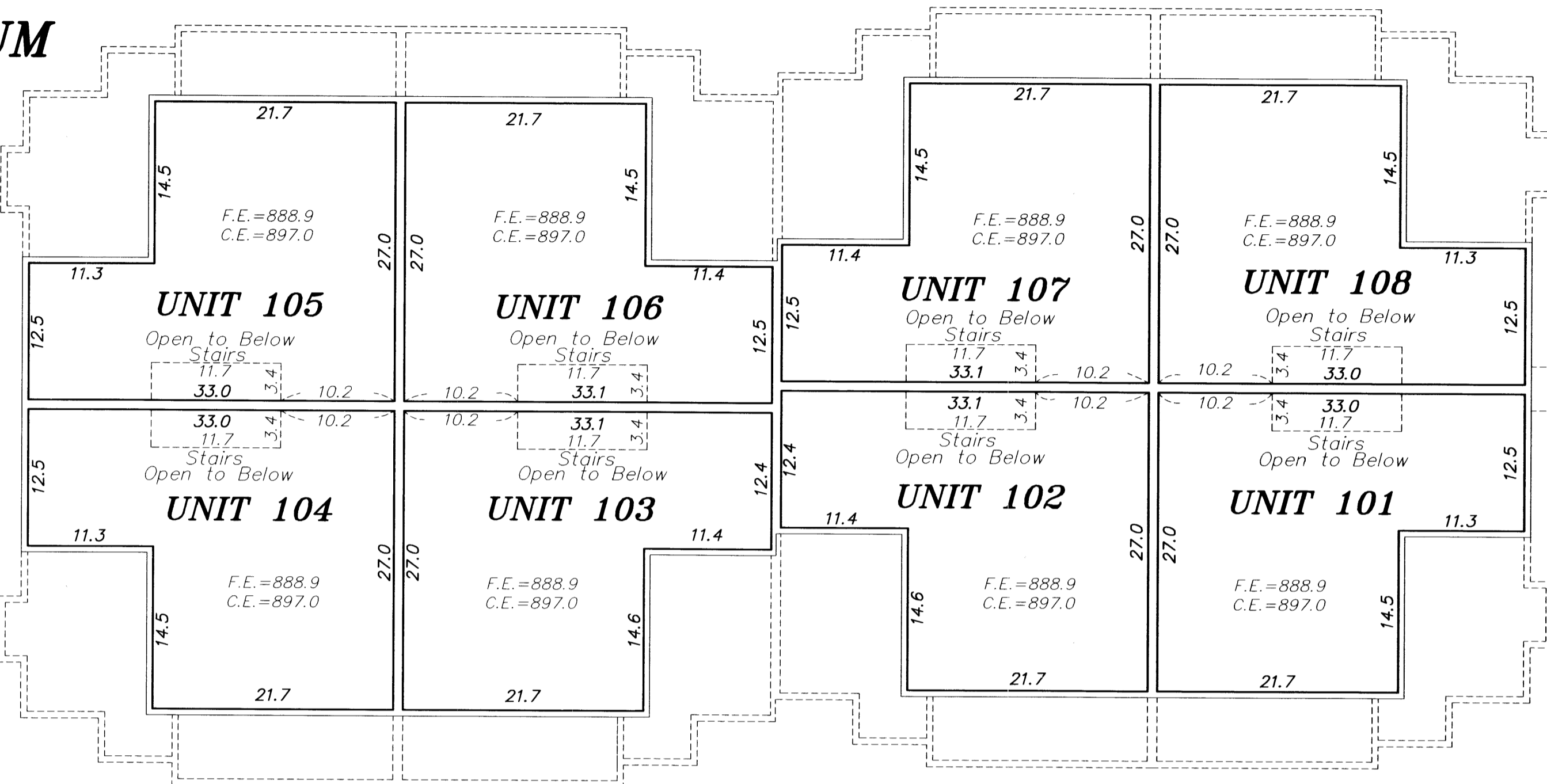
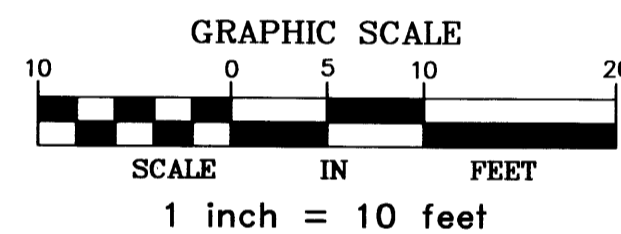
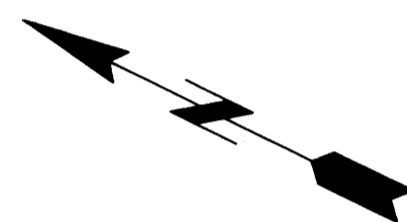
A CONDOMINIUM
TOWN CENTER GARDENS CONDOMINIUM
CIC PLAT

SECOND FLOOR PLAN

This CIC Plat is part of the Declaration recorded as
Document No. _____
on this ____ day of _____, 20____.
Anoka County Recorder

CITY OF RAMSEY
COUNTY OF ANOKA
SEC. 28, T32, R25.

UNIT DETAIL

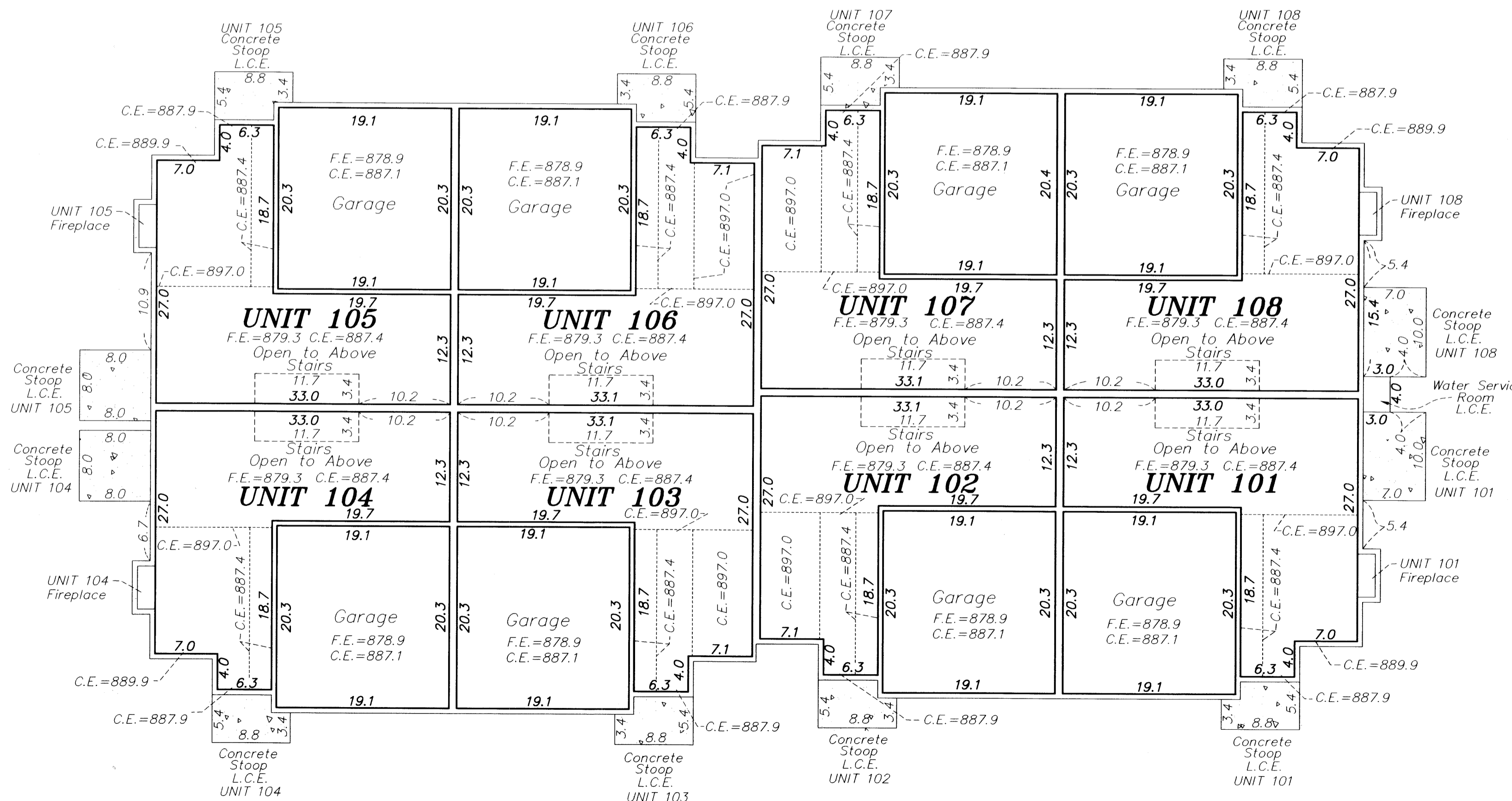


GROUND FLOOR PLAN

Interior dimensions shown are measured to the unfinished surface of the walls, floors and ceiling

Elevations are referred to a benchmark as noted on the Site Plan on Sheet 2 of 4 sheets and are shown in feet and tenths of a foot.

F.E.= Floor Elevation
C.E.= Ceiling Elevation
L.C.E.= Limited Common Element



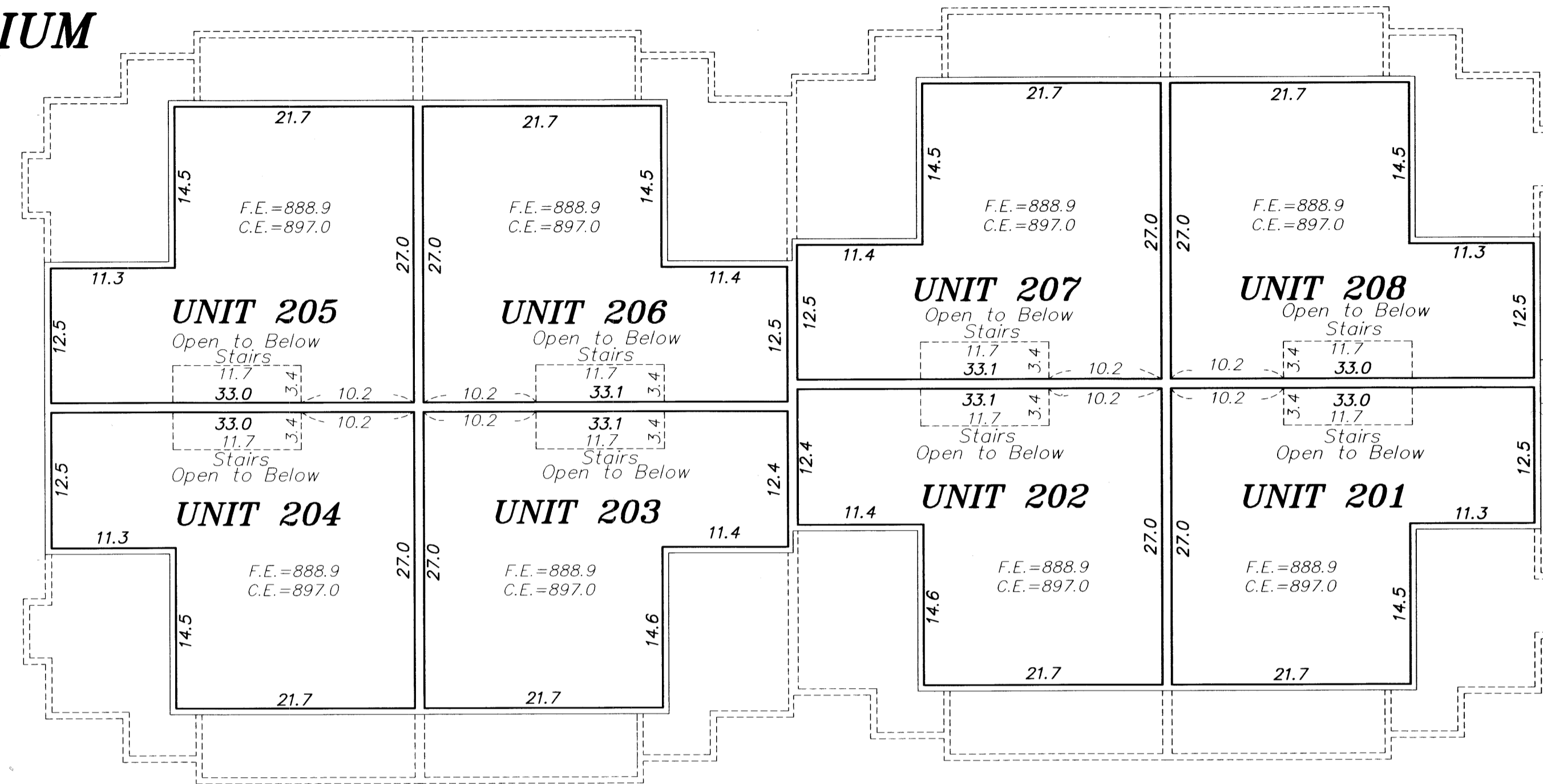
MIDWEST
Land Surveyors & Civil Engineers, Inc.

COMMON INTEREST COMMUNITY NUMBER 218 A CONDOMINIUM TOWN CENTER GARDENS CONDOMINIUM CIC PLAT

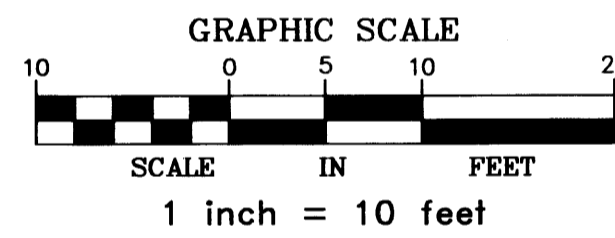
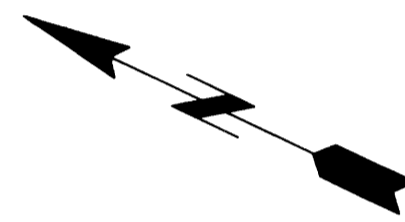
This CIC Plat is part of the Declaration recorded as
Document No. _____
on this ____ day of _____, 20____.
Anoka County Recorder

SECOND FLOOR PLAN

CITY OF RAMSEY
COUNTY OF ANOKA
SEC. 28, T32, R25.



UNIT DETAIL

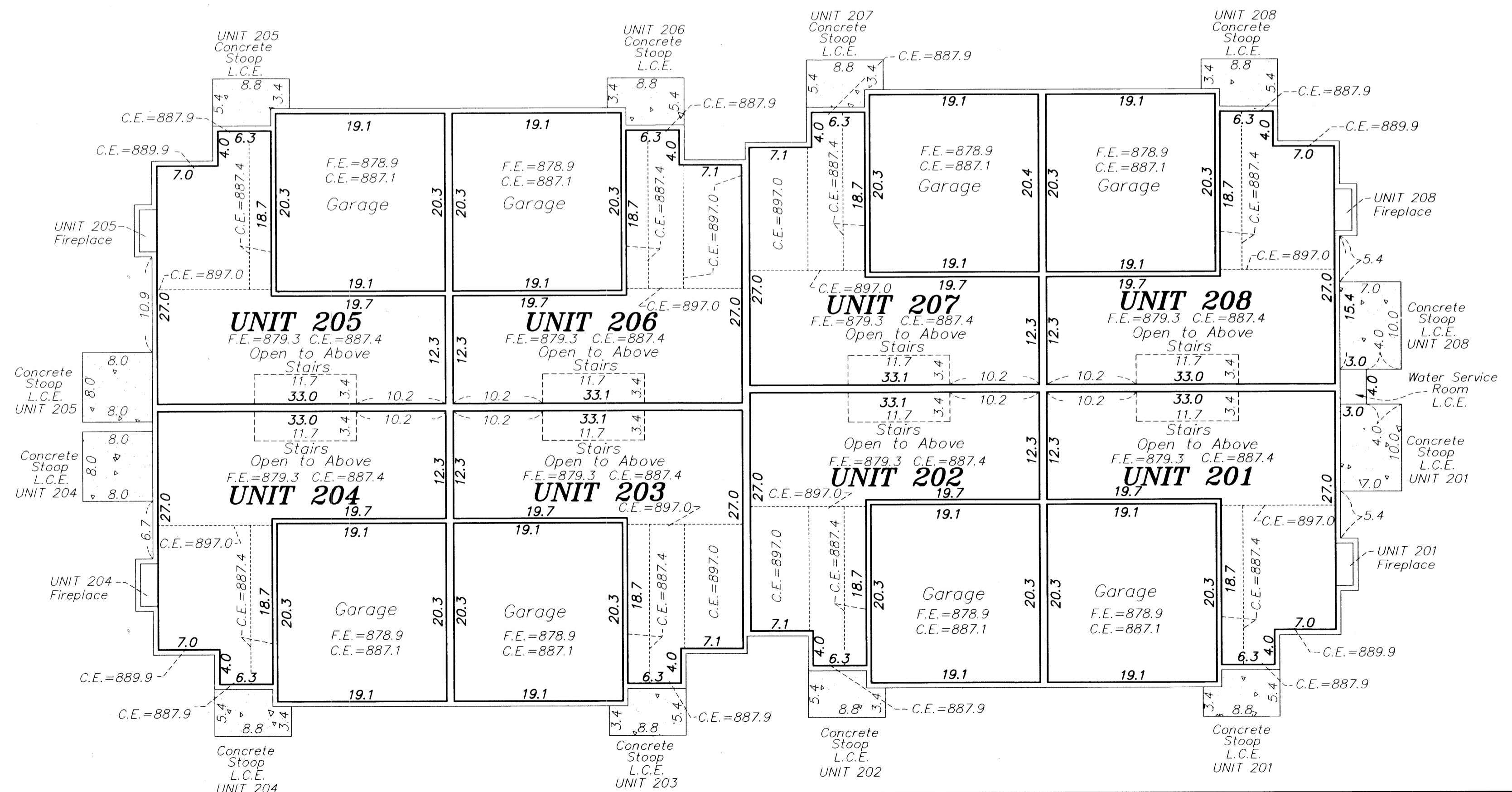


Interior dimensions shown are measured to the unfinished surface of the walls, floors and ceiling

Elevations are referred to a benchmark as noted on the Site Plan on Sheet 2 of 4 sheets and are shown in feet and tenths of a foot.

F.E.= Floor Elevation
C.E.= Ceiling Elevation
L.C.E.= Limited Common Element

GROUND FLOOR PLAN



MIDWEST
Land Surveyors & Civil Engineers, Inc.