

This FIRST SUPPLEMENTAL CIC plat is part of the FIRST SUPPLEMENT to the Declaration recorded as Document No. 2017101.001 on this 26<sup>th</sup> day of August, 2010.

CITY OF ANOKA  
COUNTY OF ANOKA  
SECTION 1, TOWNSHIP 31, RANGE 25  
SECTION 6, TOWNSHIP 31, RANGE 24

# CIC NUMBER 248

## A CONDOMINIUM

### HISTORIC RUM RIVER CONDOMINIUM

#### FIRST SUPPLEMENTAL

#### CIC PLAT

I, John C. Larson, do hereby certify that the work was undertaken by or reviewed and approved by me for this FIRST SUPPLEMENTAL CIC Plat of CIC NUMBER 248, A CONDOMINIUM, HISTORIC RUM RIVER CONDOMINIUM, being located upon:

The West 133.00 feet of the East 203.12 feet of the South 94.50 feet of Lot 1, Block 1, N.C.B.D. SECOND ADDITION, according to the recorded plat thereof, Anoka County, Minnesota.

and the additional real estate as located upon the following described property designated as:

Lot 2, Block 1, N.C.B.D. SECOND ADDITION, according to the recorded plat thereof, Anoka County, Minnesota.

and that this CIC plat fully and accurately depicts all information required by Minnesota Statutes, Section 515B.2-110.

Dated this 28<sup>th</sup> day of July, 2010.

*John C. Larson*  
John C. Larson, Licensed Land Surveyor  
Minnesota License No. 19828

STATE OF MINNESOTA  
COUNTY OF DAKOTA

The foregoing instrument was acknowledged before me this 28<sup>th</sup> day of July, 2010, by John C. Larson, a Licensed Land Surveyor.

*Nicholas J. Kolsrud*  
Nicholas J. Kolsrud  
Notary Public, Dakota County, Minnesota  
My Commission Expires January 31, 2015

I, John M. Molinaro, pursuant to Minnesota Statutes, Section 515B.2-101(c), do hereby certify that the structural components of the structures containing the units and the mechanical systems serving more than one unit are substantially completed.

Dated this 28<sup>th</sup> day of July, 2010.

*John M. Molinaro*  
John M. Molinaro, Licensed Professional Engineer  
Minnesota License No. 45851

STATE OF MINNESOTA  
COUNTY OF DAKOTA

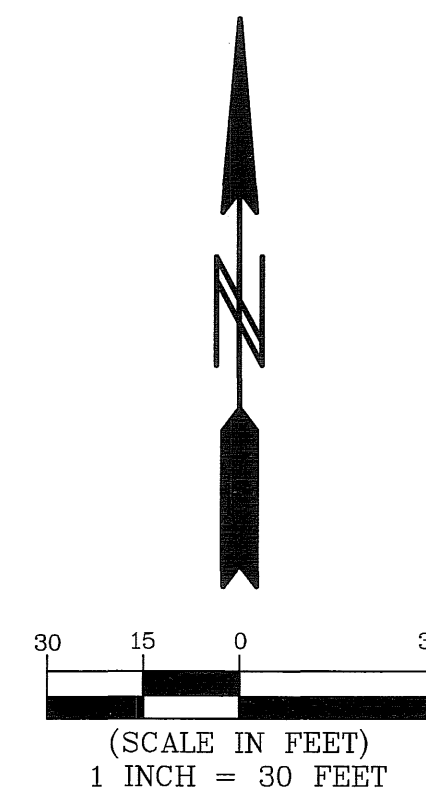
The foregoing instrument was acknowledged before me this 28<sup>th</sup> day of July, 2010, by John M. Molinaro, a Licensed Professional Engineer.

*Nicholas J. Kolsrud*  
Nicholas J. Kolsrud  
Notary Public, Dakota County, Minnesota  
My Commission Expires January 31, 2015

Pursuant to Minnesota Statutes, Chapter 389.09, Subd. 2, this CIC Plat has been reviewed and is approved this 26<sup>th</sup> day of August, 2010.

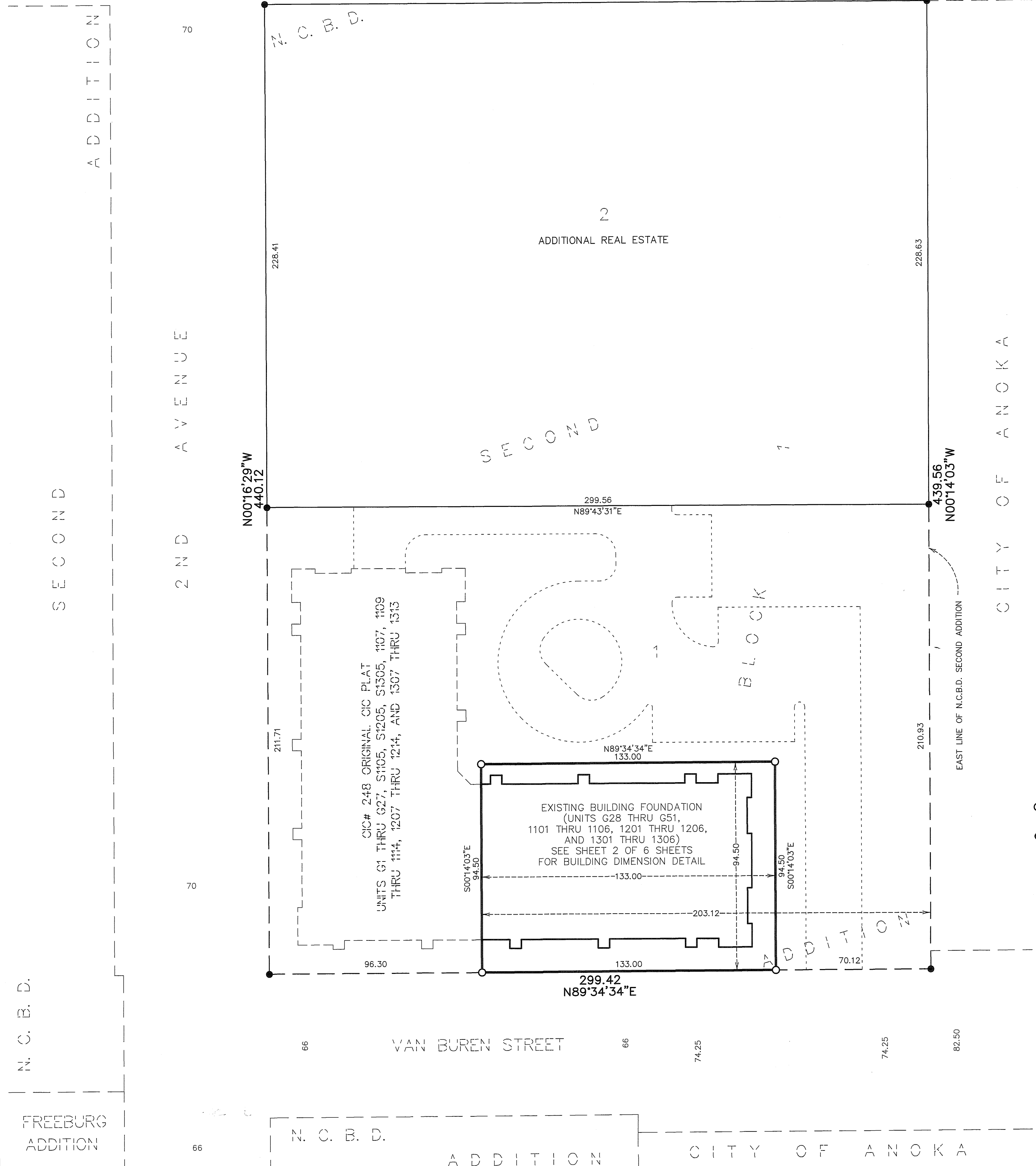
By: *Larry D. Helum*  
Larry D. Helum, Anoka County Surveyor

I HEREBY CERTIFY THAT THE CURRENT AND DELINQUENT TAXES ON THE LANDS DESCRIBED WITHIN ARE PAID AND THE TRANSFER IS ENTERED  
Aug 26 2010  
*Larry D. Helum*  
PROPERTY TAX ADMINISTRATOR



BEARINGS ARE BASED ON THE EAST LINE OF N.C.B.D. SECOND ADDITION WHICH IS ASSUMED TO HAVE A BEARING OF NORTH 00°14'03" WEST.

- DENOTES 1/2 INCH BY 14 INCH IRON MONUMENT SET AND MARKED BY LICENSE NO. 19828.
- DENOTES FOUND IRON MONUMENT.



\$58.00

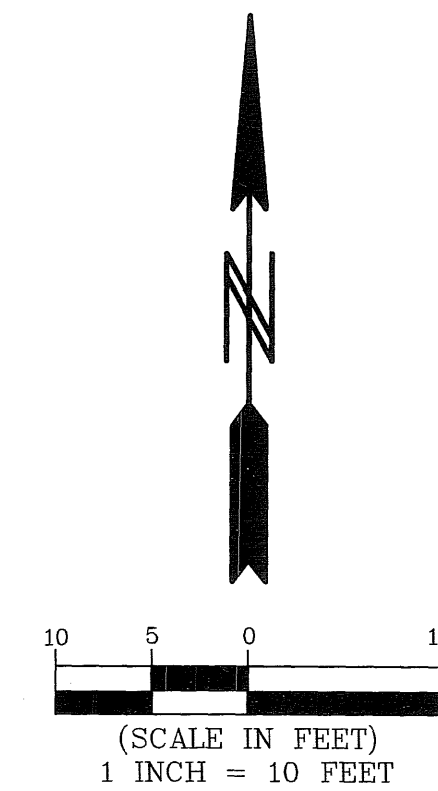
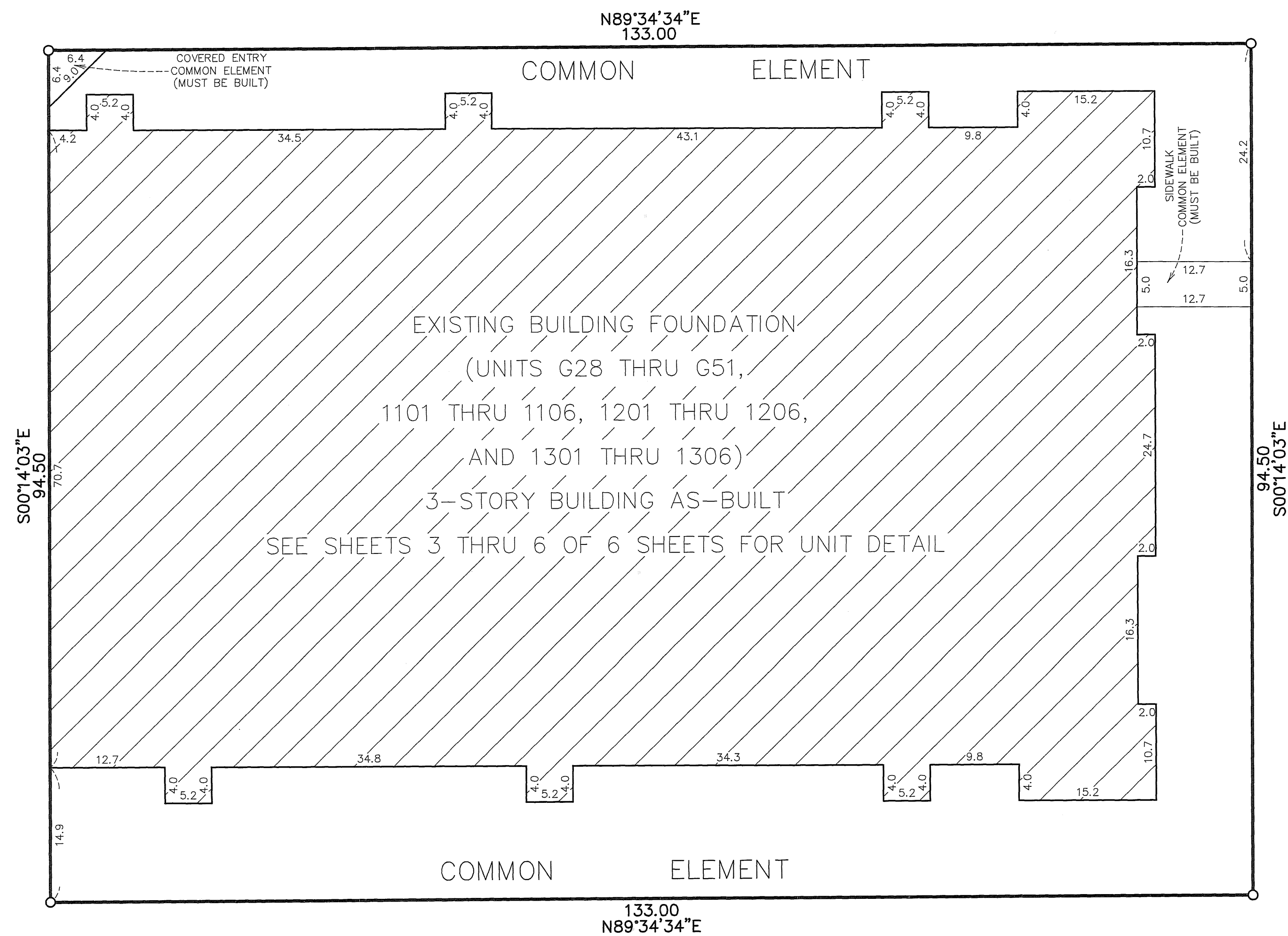
BUILDING DIMENSION DETAIL  
AS-BUILT

CIC NUMBER 248  
A CONDOMINIUM  
HISTORIC RUM RIVER CONDOMINIUM  
FIRST SUPPLEMENTAL  
CIC PLAT

BE IT AT CE 25

C.R. DOC. NO. 202104-001

CITY OF ANOKA  
COUNTY OF ANOKA  
SECTION 1, TOWNSHIP 31, RANGE 25  
SECTION 6, TOWNSHIP 31, RANGE 24



○ DENOTES 1/2 INCH BY 14 INCH IRON MONUMENT SET AND MARKED BY LICENSE NO. 19828 WHICH WILL BE SET WITHIN 1 YEAR OF RECORDING THIS PLAT.

**BENCHMARKS**  
TOP NUT OF HYDRANT AT THE NORTHEAST QUADRANT OF 1ST AVENUE AND MAIN STREET ELEVATION=867.33 FEET (NGVD-1929)  
TOP NUT OF HYDRANT AT THE NORTHEAST QUADRANT OF 2ND AVENUE AND JACKSON STREET ELEVATION=868.52 FEET (NGVD-1929)

BA, PL, EC, PS, S

C.R. DOC. NO. 2017-1001

CITY OF ANOKA  
COUNTY OF ANOKA  
SECTION 1, TOWNSHIP 31, RANGE 25  
SECTION 6, TOWNSHIP 31, RANGE 24

UNIT DETAIL  
AS-BUILT

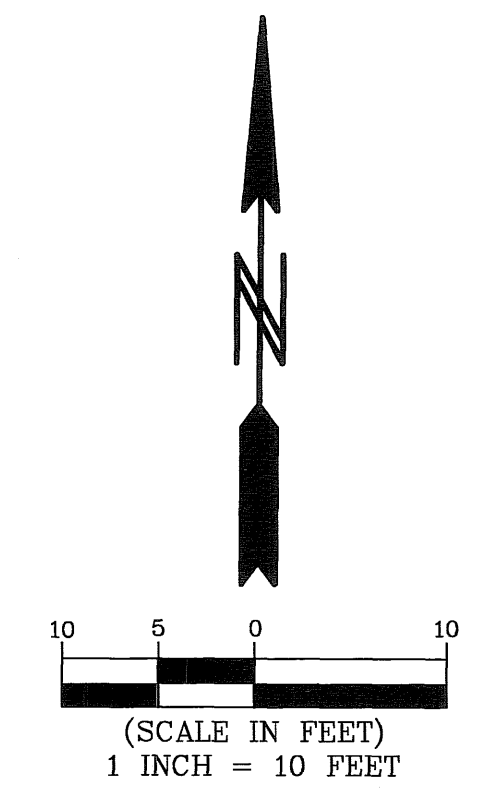
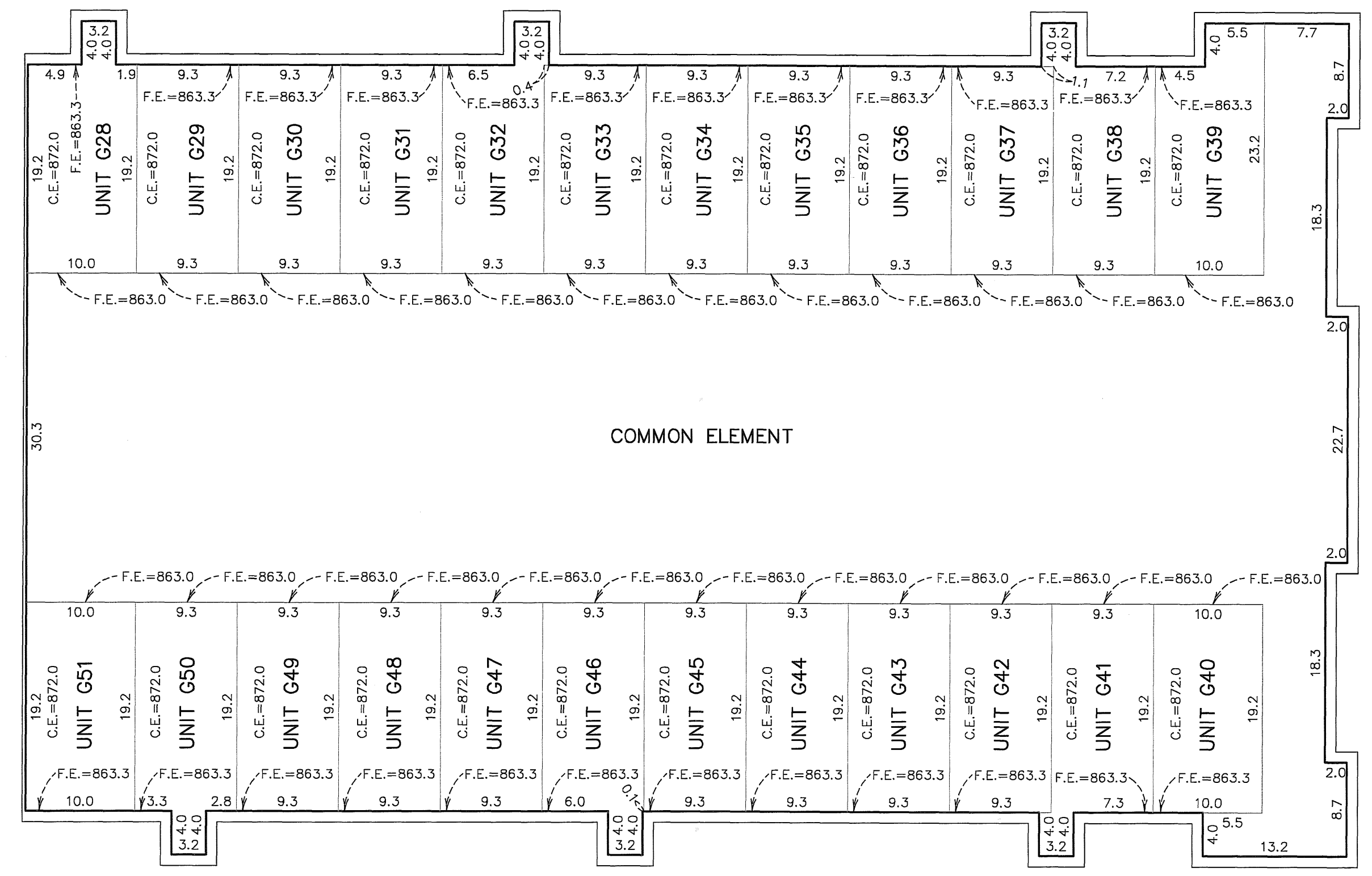
# CIC NUMBER 248

## A CONDOMINIUM

### HISTORIC RUM RIVER CONDOMINIUM

#### FIRST SUPPLEMENTAL CIC PLAT

**PARKING GARAGE  
(BASEMENT LEVEL)**



Elevations are referenced to Benchmarks as noted on sheet 2 of 6 sheets and are shown in feet and tenths of a foot.

F.E. = Floor elevation  
C.E. = Ceiling elevation

2017 11 16 248 23 5

C.R. DOC. NO. 2017 10 1001

UNIT DETAIL  
AS-BUILT

# CIC NUMBER 248

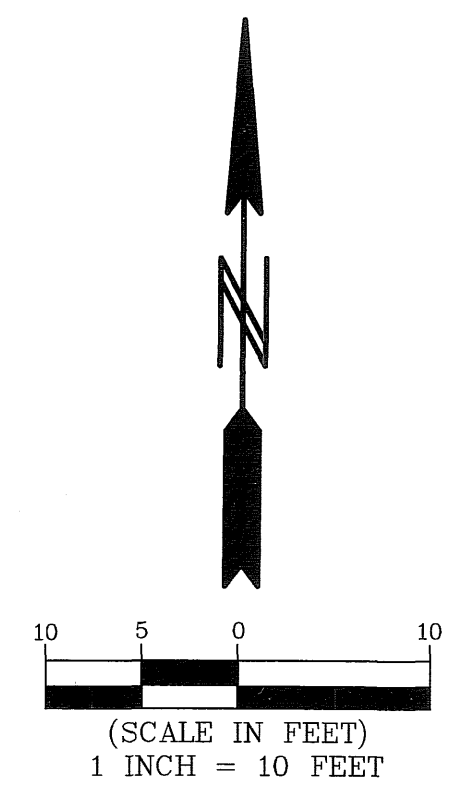
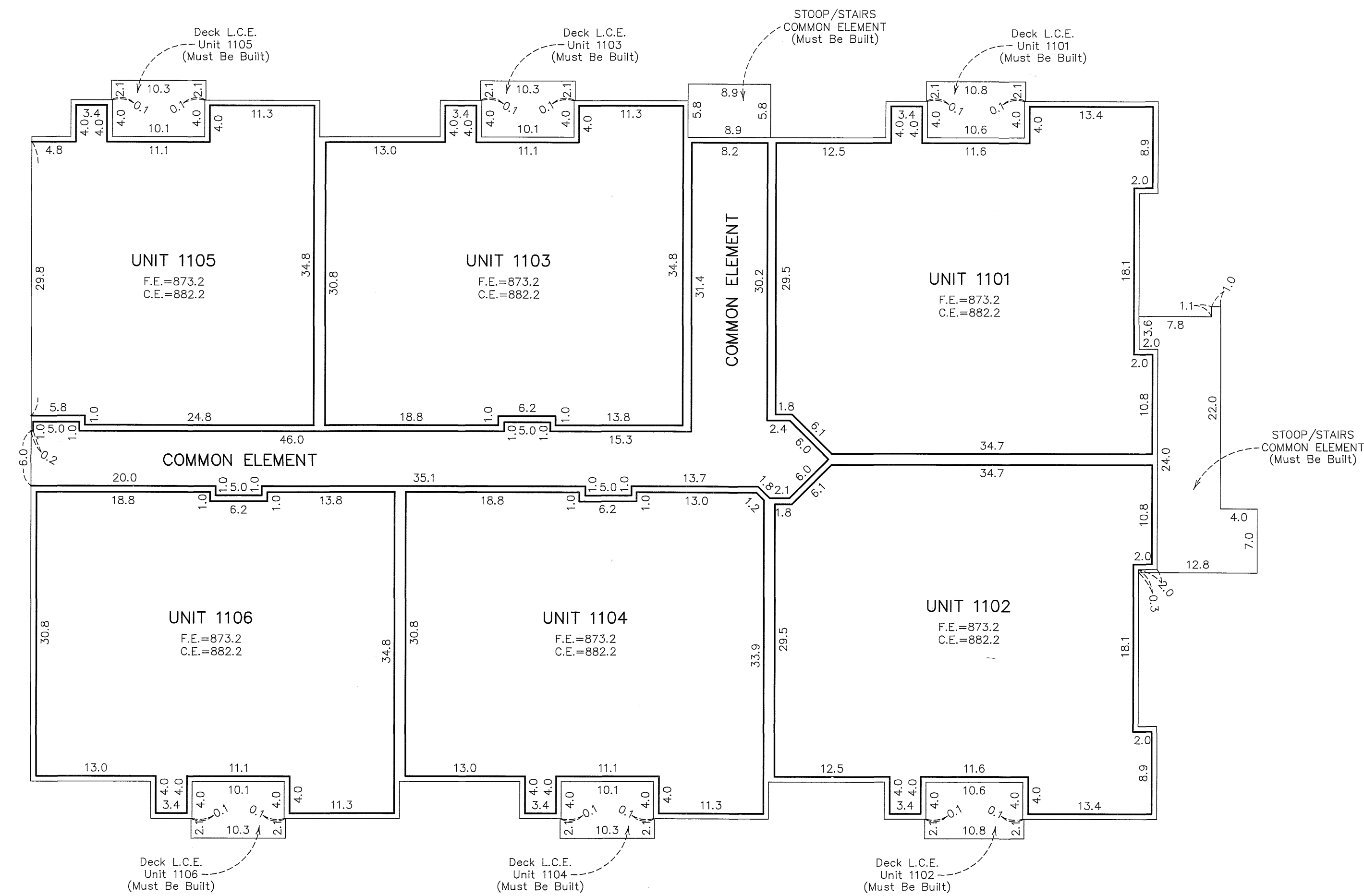
## A CONDOMINIUM

### HISTORIC RUM RIVER CONDOMINIUM

#### FIRST SUPPLEMENTAL CIC PLAT

CITY OF ANOKA  
COUNTY OF ANOKA  
SECTION 1, TOWNSHIP 31, RANGE 25  
SECTION 6, TOWNSHIP 31, RANGE 24

### FIRST FLOOR



Elevations are referenced to Benchmarks as noted on sheet 2 of 6 sheets and are shown in feet and tenths of a foot.

F.E. = Floor elevation  
C.E. = Ceiling elevation  
L.C.E. = Limited Common Element

UNIT DETAIL  
AS-BUILT

# CIC NUMBER 248

## A CONDOMINIUM

### HISTORIC RUM RIVER CONDOMINIUM

#### FIRST SUPPLEMENTAL

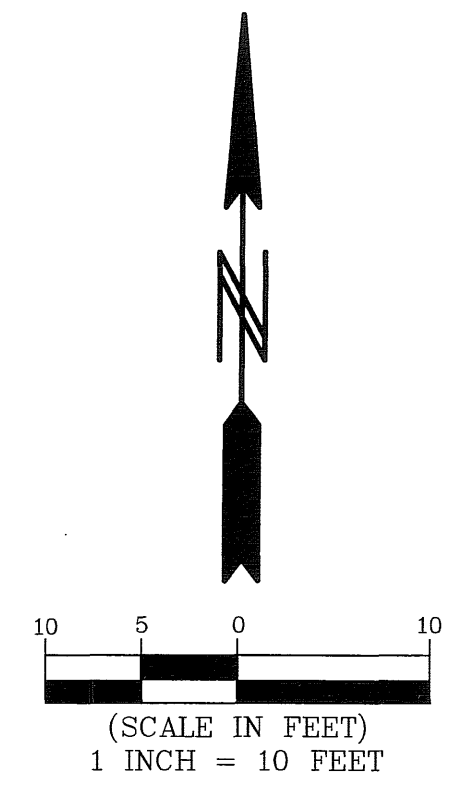
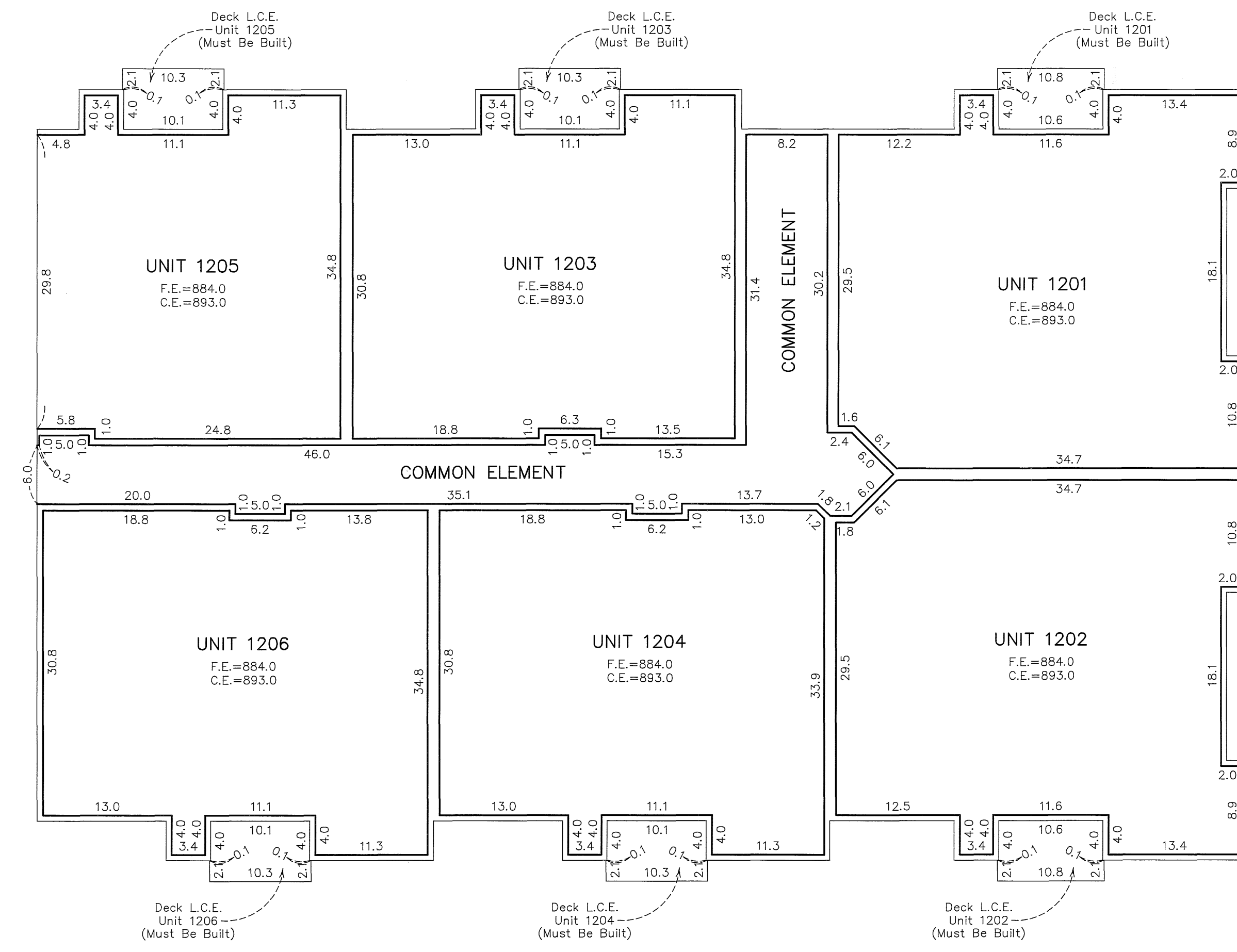
#### CIC PLAT

201701.001

C.R. DOC. NO. 201701.001

CITY OF ANOKA  
COUNTY OF ANOKA  
SECTION 1, TOWNSHIP 31, RANGE 25  
SECTION 6, TOWNSHIP 31, RANGE 24

### SECOND FLOOR



Elevations are referenced to Benchmarks as noted on sheet 2 of 6 sheets and are shown in feet and tenths of a foot.

F.E. = Floor elevation  
C.E. = Ceiling elevation  
L.C.E. = Limited Common Element



UNIT DETAIL  
AS-BUILT

# CIC NUMBER 248

## A CONDOMINIUM

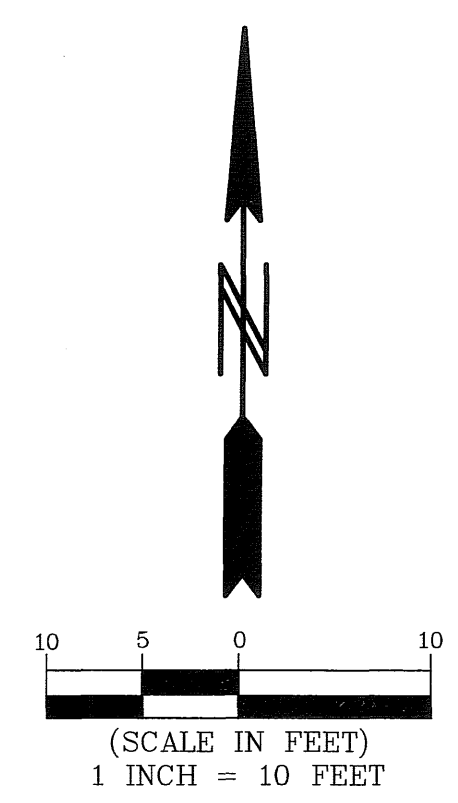
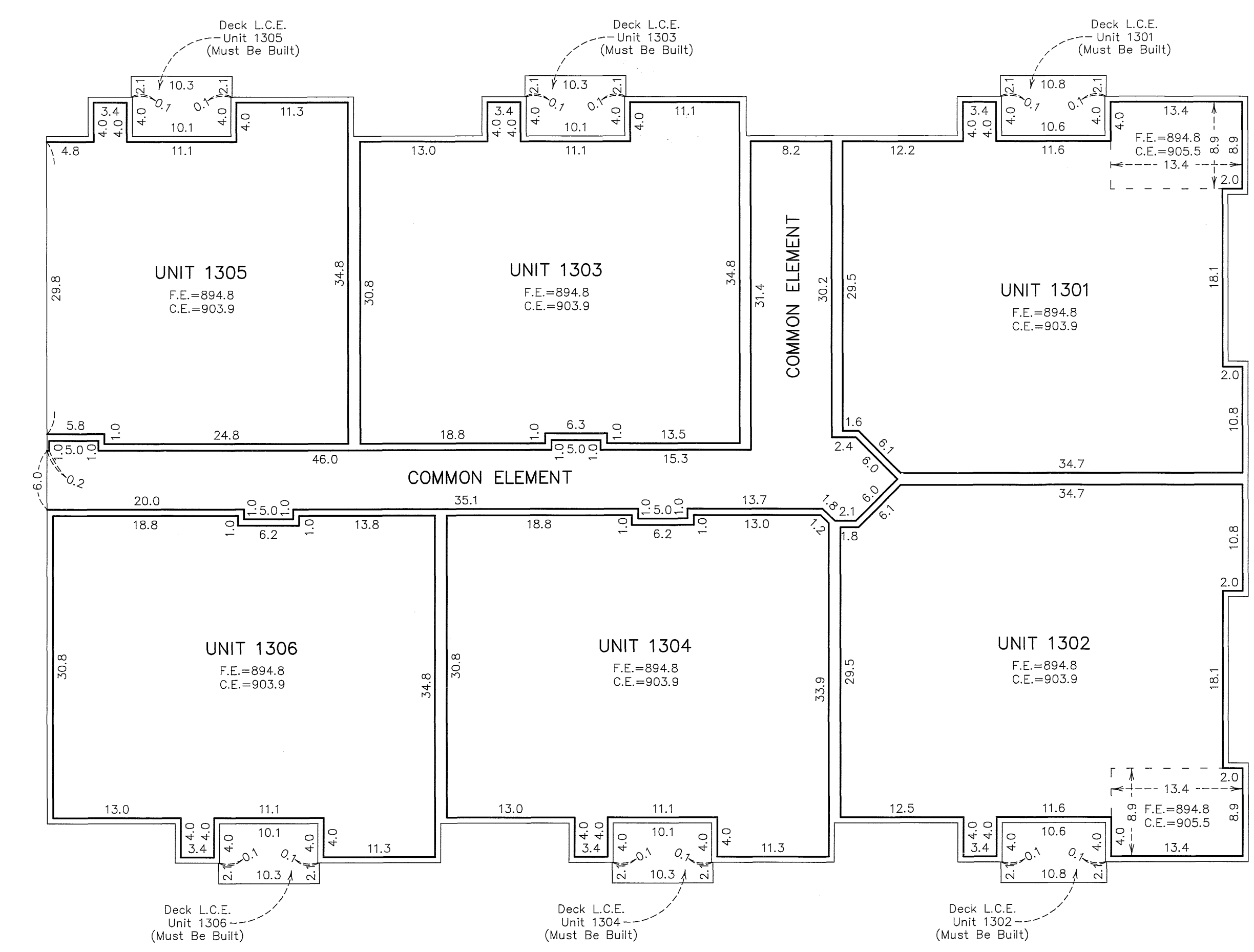
### HISTORIC RUM RIVER CONDOMINIUM

#### FIRST SUPPLEMENTAL CIC PLAT

C.R. DOC. NO. 202701.005

CITY OF ANOKA  
COUNTY OF ANOKA  
SECTION 1, TOWNSHIP 31, RANGE 25  
SECTION 6, TOWNSHIP 31, RANGE 24

### THIRD FLOOR



Elevations are referenced to Benchmarks as noted on sheet 2 of 6 sheets and are shown in feet and tenths of a foot.

F.E. = Floor elevation  
C.E. = Ceiling elevation  
L.C.E. = Limited Common Element