

SITE PLAN

AUDITOR'S SUBDIVISION NO. 119

THIS CIC PLAT IS PART OF THE DECLARATION RECORDED AS DOCUMENT NO. 2008348.001 ON THIS 24 DAY OF June, 2009.

CITY OF ANOKA COUNTY OF ANOKA SECTION 1, TOWNSHIP 31, RANGE 25 SECTION 6, TOWNSHIP 31, RANGE 24 BK10 of CIC pg44

CIC NUMBER 248 A CONDOMINIUM HISTORIC RUM RIVER CONDOMINIUM CIC PLAT

I, John C. Larson, do hereby certify that the work was undertaken by or reviewed and approved by me for this CIC Plat of CIC NUMBER 248, A CONDOMINIUM, HISTORIC RUM RIVER CONDOMINIUM, being located upon:

Lot 1, Block 1, N.C.B.D. SECOND ADDITION, according to the recorded plat thereof, Anoka County, Minnesota.

EXCEPT, the West 133.00 feet of the East 203.12 feet of the South 94.50 feet of said Lot 1. and the additional real estate as located upon the following described property designated as:

Lot 2, Block 1, and the West 133.00 feet of the East 203.12 feet of the South 94.50 feet of Lot 1, Block 1, N.C.B.D. SECOND ADDITION, according to the recorded plat thereof, Anoka County, Minnesota.

and that this CIC plat fully and accurately depicts all information required by Minnesota Statutes, Section 515B.2-110.

Dated this 11 day of May, 2009.

John C. Larson, Professional Land Surveyor Minnesota License No. 19828

STATE OF MINNESOTA COUNTY OF DAKOTA

The foregoing certificate was acknowledged before me this 11 day of May, 2009, by John C. Larson, a Licensed Professional Land Surveyor.

Nicholas J. Kalsrud, Notary Public, Dakota County, Minnesota My Commission Expires January 31, 2010

I, Paul J. Cherne, pursuant to Minnesota Statutes, Section 515B.2-101(c), do hereby certify that the units and the structural components of the structures containing the units and the mechanical systems serving more than one unit are substantially completed.

Dated this 11 day of May, 2009.

Paul J. Cherne, Licensed Professional Engineer Minnesota License No. 19860

STATE OF MINNESOTA COUNTY OF DAKOTA

The foregoing certificate was acknowledged before me this 11 day of May, 2009, by Paul J. Cherne, a Licensed Professional Engineer.

Nicholas J. Kalsrud, Notary Public, Dakota County, Minnesota My Commission Expires January 31, 2010

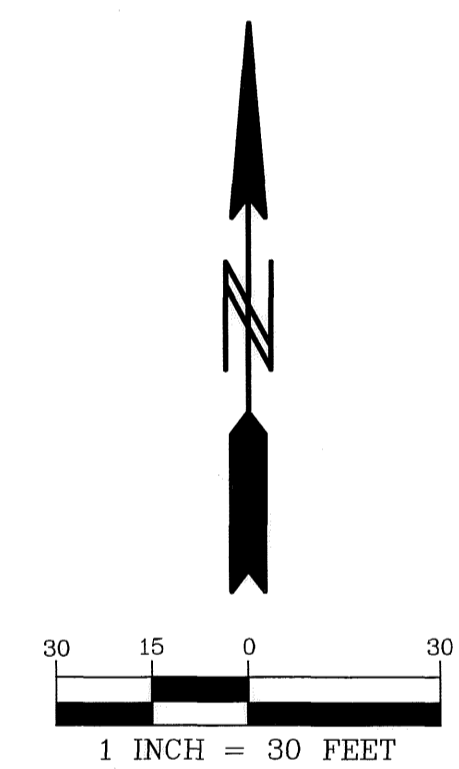
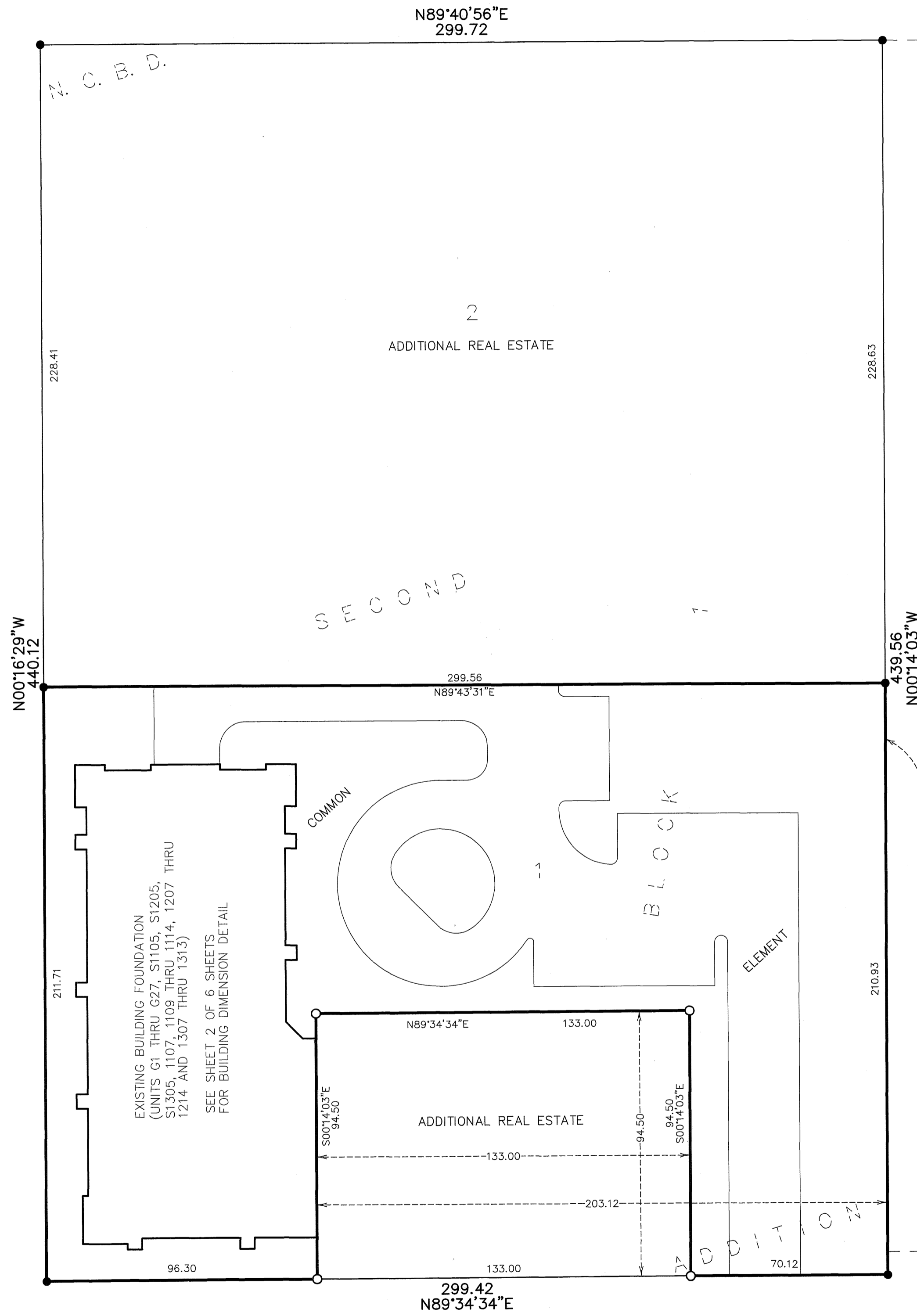
Checked and approved this 24th day of June, 2009.

Larry D. Holm, Anoka County Surveyor

I HEREBY CERTIFY THAT THE CURRENT AND DELINQUENT TAXES ON THE LANDS DESCRIBED WITHIN ARE PAID AND THE TRANSFER IS ENTERED June 24, 2009 MAUREN J. DEVINE DEPUTY PROPERTY TAX ADMINISTRATOR

\$56.00

PIONEER engineering CIVIL ENGINEERS LAND PLANNERS LAND SURVEYORS LANDSCAPE ARCHITECTS



- DENOTES 1/2 INCH BY 14 INCH IRON MONUMENT SET AND MARKED BY LICENSE NO. 19828. ● DENOTES FOUND IRON MONUMENT.

2008348.001 OFFICE OF COUNTY RECORDER STATE OF MINNESOTA, COUNTY OF ANOKA I hereby certify that the within instrument was filed in this office for record on the 24 June 2009 in book 1001C page 44 MAUREN J. DEVINE County Recorder By LKG Deputy

BUILDING DIMENSION DETAIL
AS-BUILT

CIC NUMBER 248

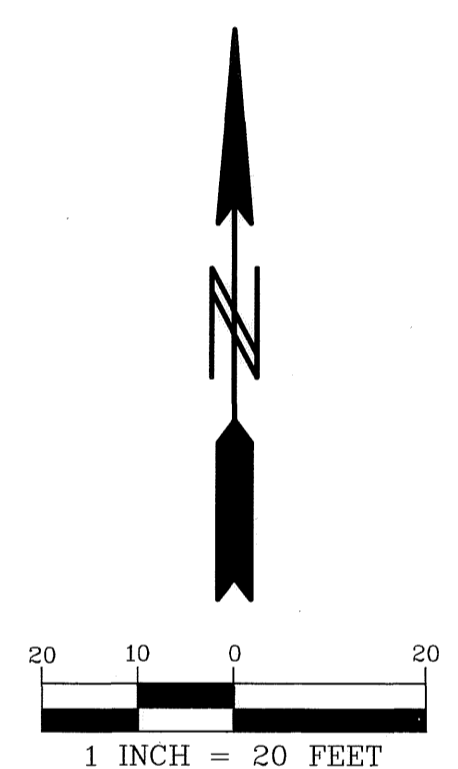
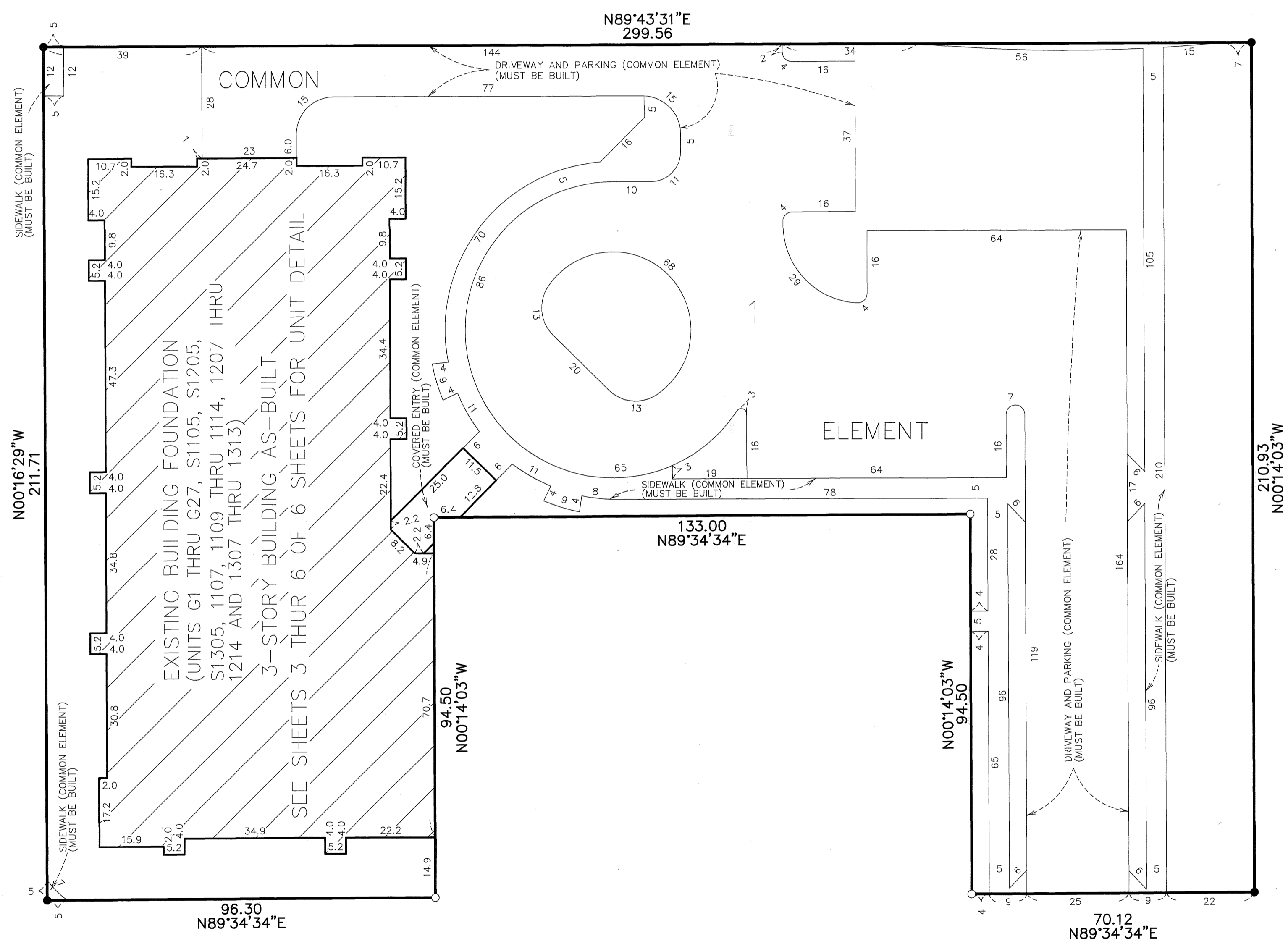
A CONDOMINIUM

HISTORIC RUM RIVER CONDOMINIUM

CIC PLAT

C.R. DOC. NO. 2008348.001

CITY OF ANOKA
COUNTY OF ANOKA
SECTION 1, TOWNSHIP 31, RANGE 25
SECTION 6, TOWNSHIP 31, RANGE 24
BK10 of CIC pg 44



- DENOTES 1/2 INCH BY 14 INCH IRON MONUMENT SET AND MARKED BY LICENSE NO. 19828 WHICH WILL BE SET WITHIN 1 YEAR OF RECORDING THIS PLAT.
- DENOTES FOUND IRON MONUMENT.

BENCHMARKS
 TOP NUT OF HYDRANT AT THE NORTHEAST QUADRANT OF 1ST AVENUE AND MAIN STREET
 ELEVATION=867.33 FEET (NGVD-1929)
 TOP NUT OF HYDRANT AT THE NORTHEAST QUADRANT OF 2ND AVENUE AND JACKSON STREET
 ELEVATION=868.52 FEET (NGVD-1929)

UNIT DETAIL
AS-BUILT

CIC NUMBER 248

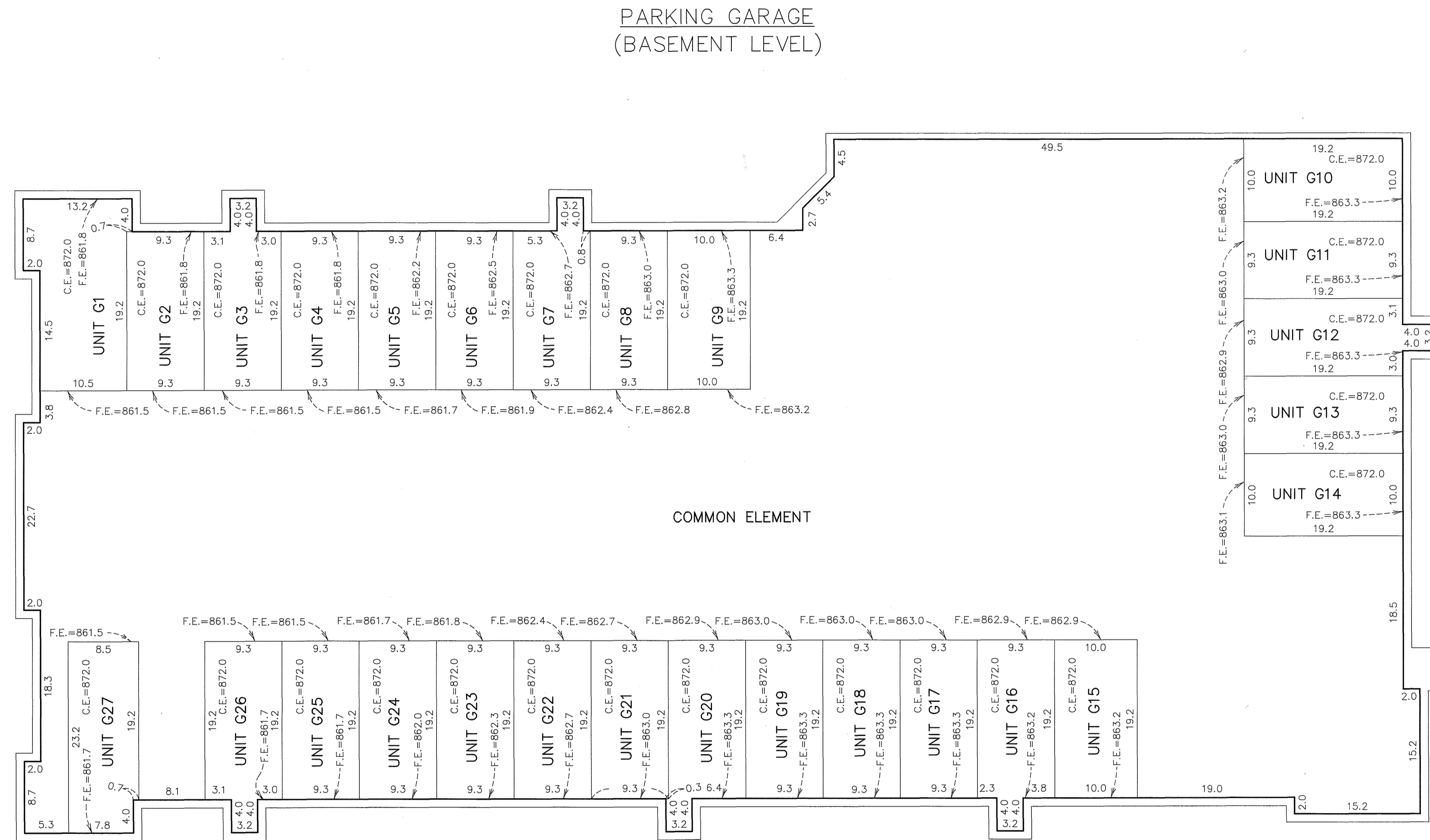
A CONDOMINIUM

HISTORIC RUM RIVER CONDOMINIUM

CIC PLAT

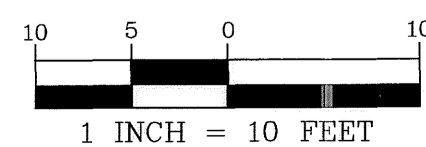
C.R. DOC. NO. 2008348.001

CITY OF ANOKA
COUNTY OF ANOKA
SECTION 1, TOWNSHIP 31, RANGE 25
SECTION 6, TOWNSHIP 31, RANGE 24
BK 10 of CIC pg 44



Elevations are referenced to Benchmarks as noted on sheet 2 of 6 sheets and are shown in feet and tenths of a foot.

F.E. = Floor elevation
C.E. = Ceiling elevation



UNIT DETAIL
AS-BUILT

CIC NUMBER 248

A CONDOMINIUM

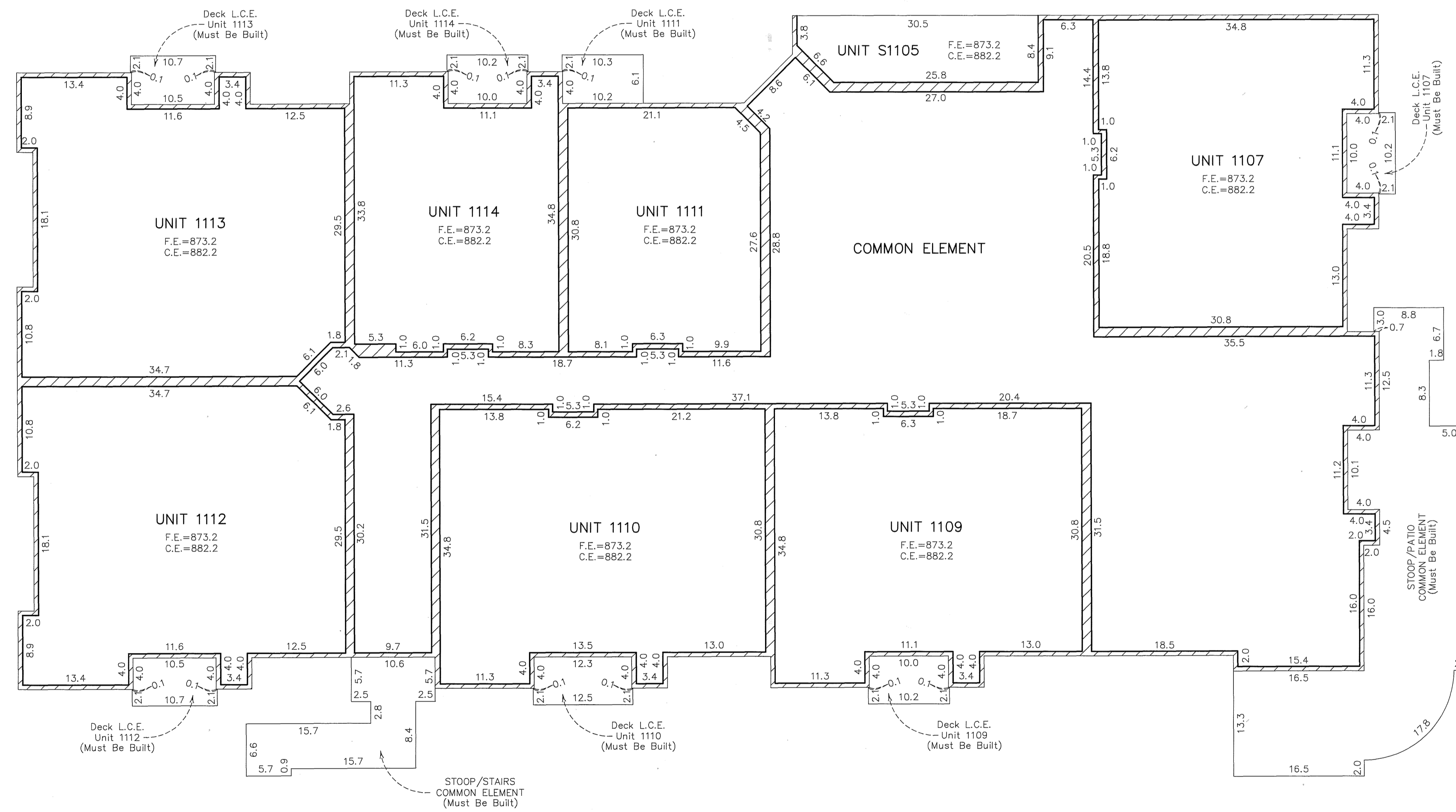
HISTORIC RUM RIVER CONDOMINIUM

CIC PLAT

C.R. DOC. NO. 2008348.001

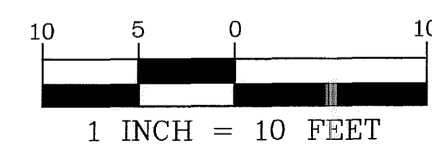
CITY OF ANOKA
COUNTY OF ANOKA
SECTION 1, TOWNSHIP 31, RANGE 25
SECTION 6, TOWNSHIP 31, RANGE 24
BK 10 of CIC pg 44

FIRST FLOOR



Elevations are referenced to Benchmarks as noted on sheet 2 of 6 sheets and are shown in feet and tenths of a foot.

F.E. = Floor elevation
C.E. = Ceiling elevation
L.C.E. = Limited Common Element



UNIT DETAIL
AS-BUILT

CIC NUMBER 248

A CONDOMINIUM

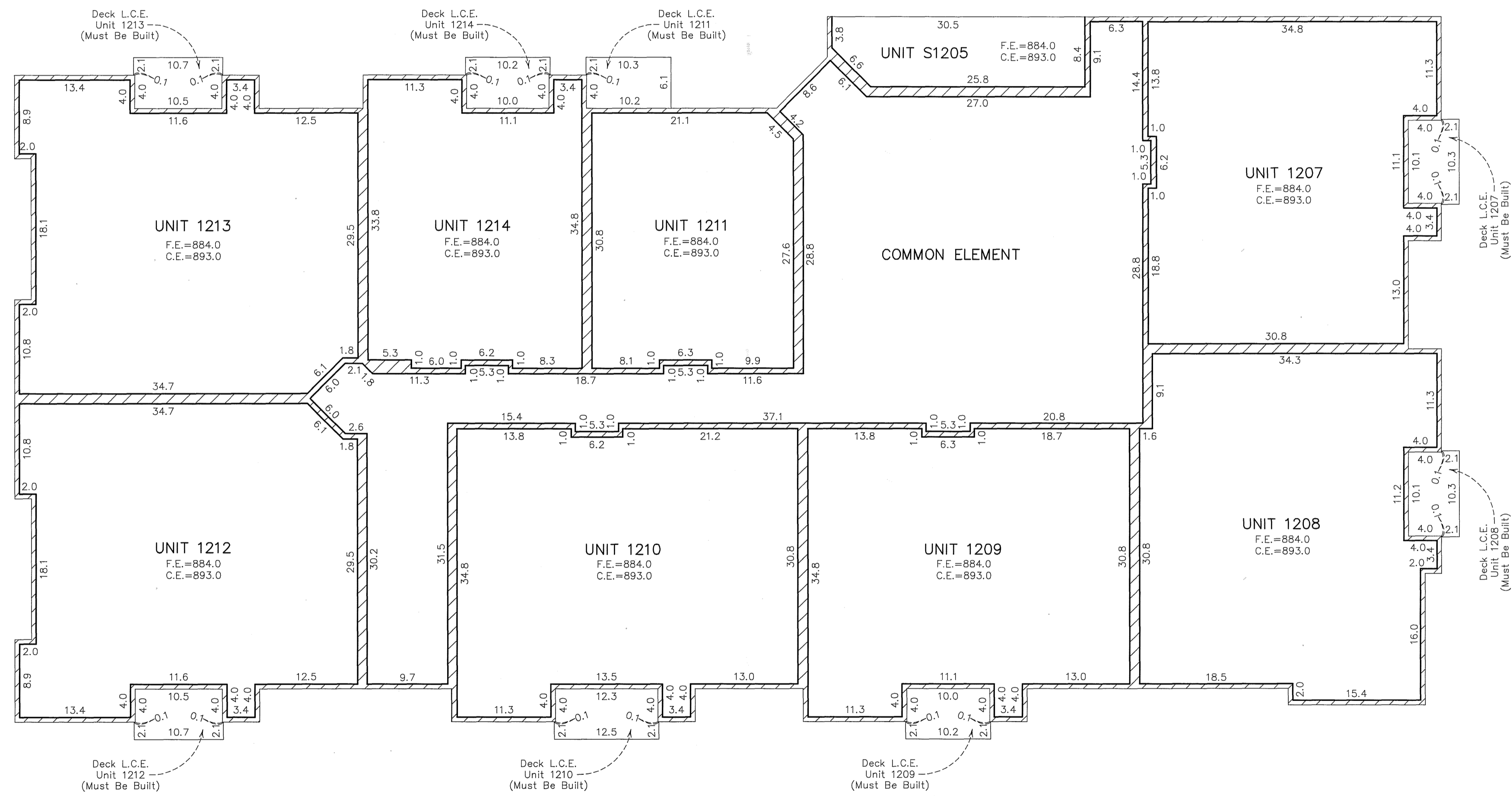
HISTORIC RUM RIVER CONDOMINIUM

CIC PLAT

C.R. DOC. NO. 2008348.001

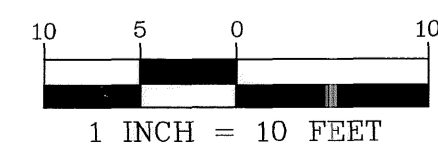
CITY OF ANOKA
COUNTY OF ANOKA
SECTION 1, TOWNSHIP 31, RANGE 25
SECTION 6, TOWNSHIP 31, RANGE 24
BK10 of CIC pg 44

SECOND FLOOR



Elevations are referenced to Benchmarks as noted on sheet 2 of 6 sheets and are shown in feet and tenths of a foot.

F.E. = Floor elevation
C.E. = Ceiling elevation
L.C.E. = Limited Common Element



UNIT DETAIL
AS-BUILT

CIC NUMBER 248

A CONDOMINIUM

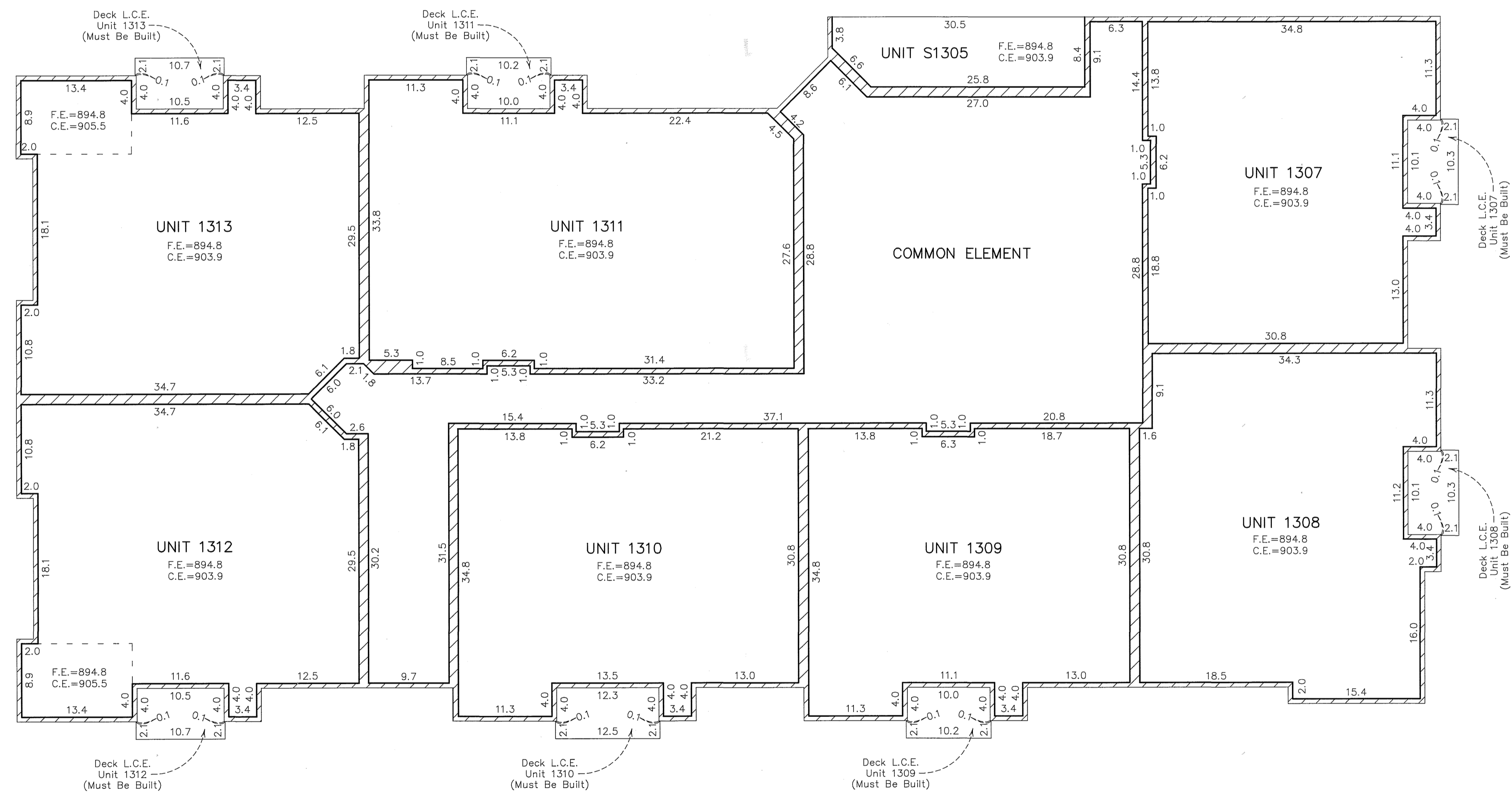
HISTORIC RUM RIVER CONDOMINIUM

CIC PLAT

C.R. DOC. No. 2008 348.001

CITY OF ANOKA
COUNTY OF ANOKA
SECTION 1, TOWNSHIP 31, RANGE 25
SECTION 6, TOWNSHIP 31, RANGE 24
BK 10 of CIC pg 44

THIRD FLOOR



Elevations are referenced to Benchmarks as noted on sheet 2 of 6 sheets and are shown in feet and tenths of a foot.

F.E. = Floor elevation
C.E. = Ceiling elevation
L.C.E. = Limited Common Element

