

CIC NUMBER 258

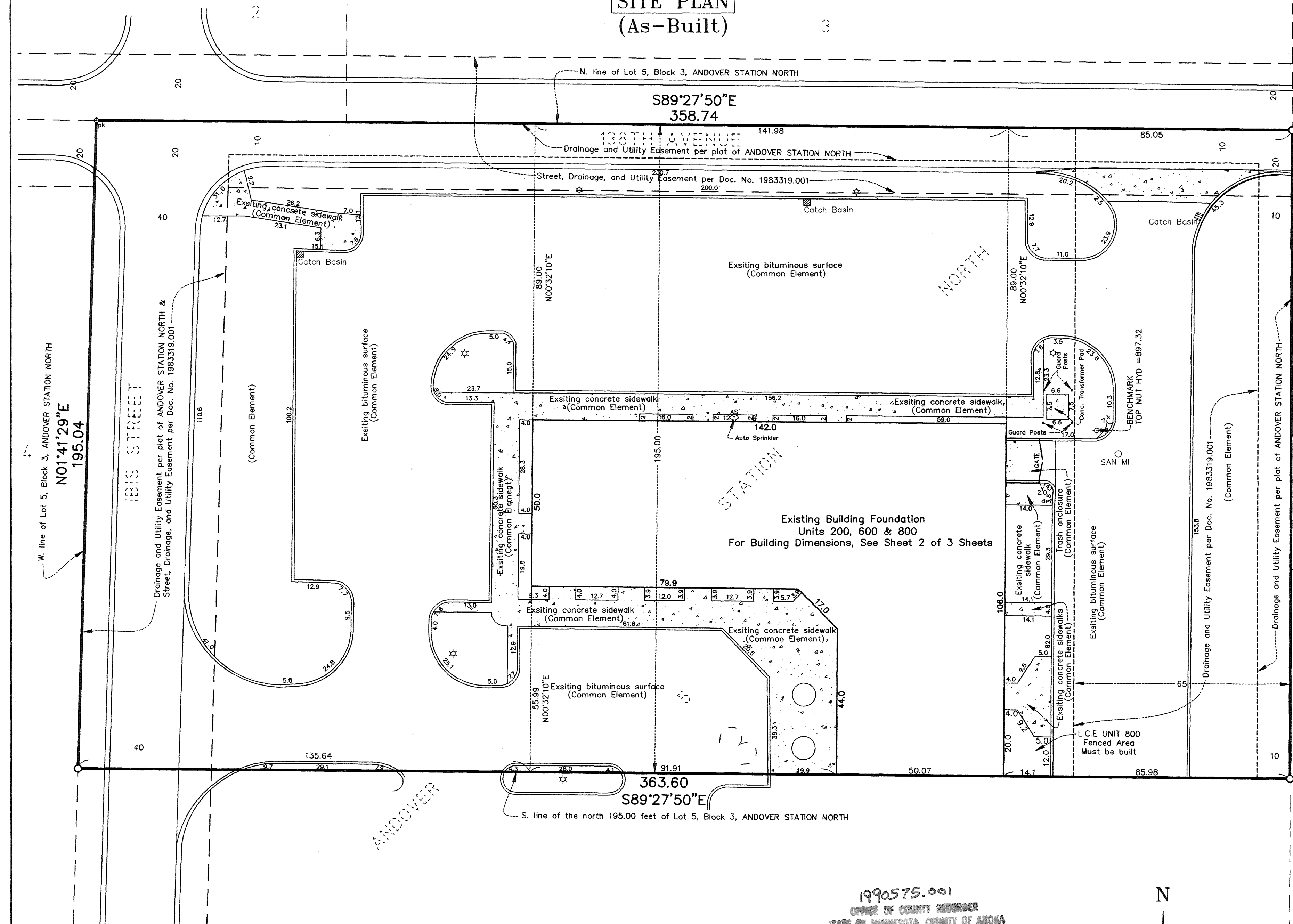
Book 9 of CIC Page 47

This CIC plat has been recorded as part of the declaration filed as document number 1990575.001 on the 24th day of January, 2007.

A CONDOMINIUM NORTHPOINTE BUILDING 1 CIC PLAT

City of Andover
County of Anoka
Sec. 34, T. 32, R. 24

SITE PLAN (As-Built)



I, Jeffrey N. Caine, do hereby certify that the work was undertaken by or reviewed and approved by me for this CIC Plat of CIC NUMBER 258, A CONDOMINIUM, NORTHPOINTE BUILDING 1, being located upon:

The north 195.00 feet of Lot 5, Block 3 ANDOVER STATION NORTH, according to the recorded plat thereof, Anoka County, Minnesota.

Fully and accurately depicts all information required by Minnesota Statutes, Section 515B.2-110.

Dated this 22nd day of January, 2007.

Jeffrey N. Caine
Jeffrey N. Caine, Land Surveyor
Minnesota License No. 12251

STATE OF MINNESOTA
COUNTY OF ANOKA

The foregoing instrument was acknowledged before me this 22 day of January, 2007, by Jeffrey N. Caine, a Licensed Land Surveyor.

Jill M. Kent
JILL M. KENT
NOTARY PUBLIC - MINNESOTA
My Commission Expires 01-31-2010

Jill M. Kent
Notary Public, Anoka County, Minnesota
My Commission Expires 01-31-10

I, Leonard Lampert, Pursuant to Minnesota Statutes, Section 515B.2-101(c), do hereby certify that all structural components and mechanical systems of all buildings containing or comprising any units thereby created are substantially completed.

Dated this 22nd day of January, 2007.

Leonard Lampert
Leonard Lampert, Registered Architect
Minnesota License No. 13669

STATE OF MINNESOTA
COUNTY OF ANOKA

The foregoing instrument was acknowledged before me this 22nd day of January, 2007, by Roger W. Nelson, a Registered Engineer.

Kathleenann Thoma
KATHLEENANN THOMA
Notary Public
Minnesota
My Commission Expires Jan. 31, 2010

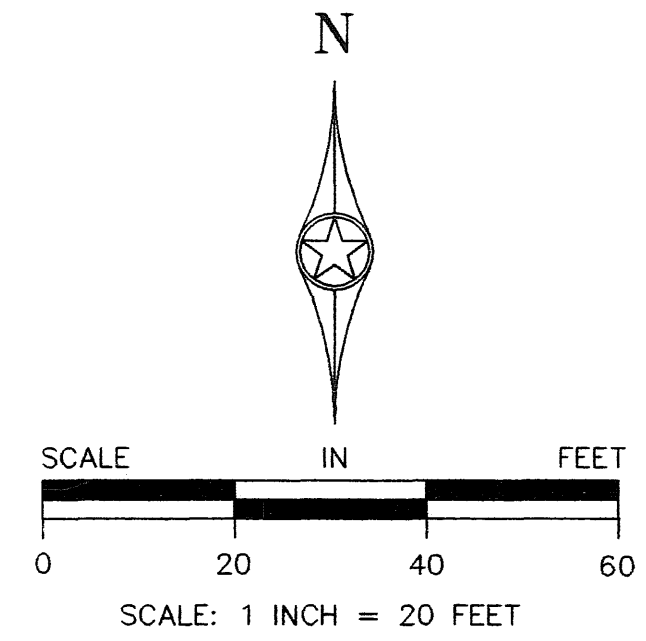
Kathleenann Thoma
Notary Public, Anoka County, Minnesota
My Commission Expires Jan 31, 2010

Pursuant to Minnesota Statutes, Chapter 389.09, Subd. 2, this CIC Plat has been reviewed and approved this 24th day of January, 2007.

By: *Larry D. Hoium*
Larry D. Hoium, County Surveyor

by *Charles F. Reizen*, Deputy

1990575.001
OFFICE OF COUNTY RECORDER
STATE OF MINNESOTA, COUNTY OF ANOKA
I hereby certify that the within instrument was filed in this office for record on the 24th of Jan. 2007 at 9:20 o'clock A.M., and was duly recorded in Book 9 of CIC # 47.
BAL
County Recorder
Lawrence J. Perrine



I HEREBY CERTIFY THAT THE CURRENT AND DELINQUENT TAXES ON THE LANDS DESCRIBED WITHIN ARE PAID AND THE TRANSFER IS ENTERED
Jan 24 2007
MARILEEN J. DEVINE
PROPERTY TAX ADMINISTRATOR
BY: *J. Culver*
DEPUTY PROPERTY TAX ADMINISTRATOR

BENCH MARK

Top Nut Hydrant on E. side of Existing Building on the North 195 feet of Lot 5, Block 3, ANDOVER STATION NORTH.
Elevation = 897.32 feet (N.G.V.D. 1929)

- DENOTES SET IRON PIPE WITH PLASTIC CAP STAMPED 12251
- ⊙ DENOTES SET PK NAIL
- ★ DENOTES EXISTING LIGHT POLE
- L.C.E. DENOTES LIMITED COMMON ELEMENT

NOTE: FOR THE PURPOSES OF THIS PLAT, THE NORTH LINE OF LOT 5, BLOCK 3, ANDOVER STATION NORTH IS ASSUMED TO BEAR S89°27'50"E.

\$60.00



RLK Incorporated
1321 Andover Blvd. NE Suite 114 Ham Lake, MN 55304
Hibbing, Ham Lake, Minnetonka, Twin Ports
Phone: (763) 434-7645

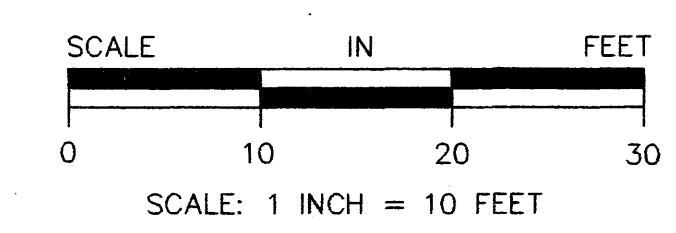
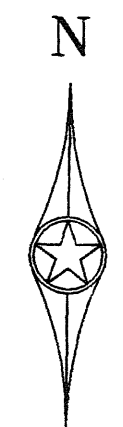
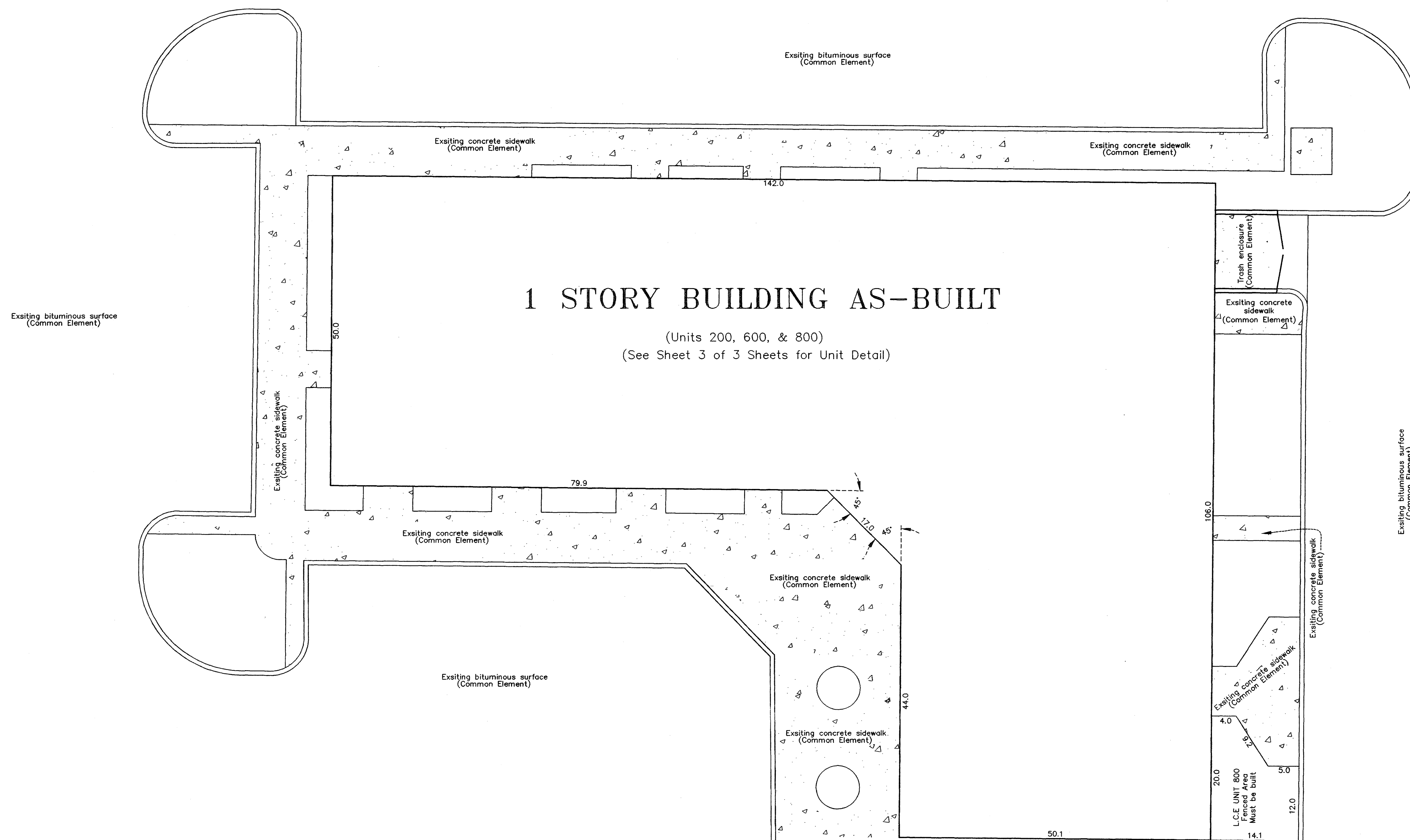
CIC NUMBER 258

Book 9 of CIC Page 47

C.R. DOC. NO. 1990575.001

A CONDOMINIUM NORTHPOINTE BUILDING 1 CIC PLAT

City of Andover
County of Anoka
Sec. 34, T. 32, R. 24



RLK Incorporated
1321 Andover Blvd. NE Suite 114 Ham Lake, MN 55304
Hibbing, Ham Lake, Minnetonka, Twin Ports
Phone: (763) 434-7646

CIC NUMBER 258

Book 9 of CIC Page 47

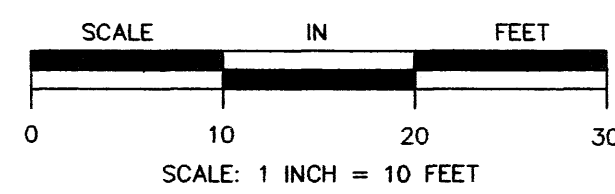
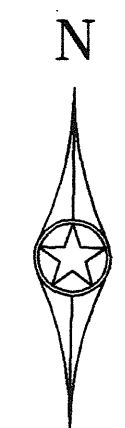
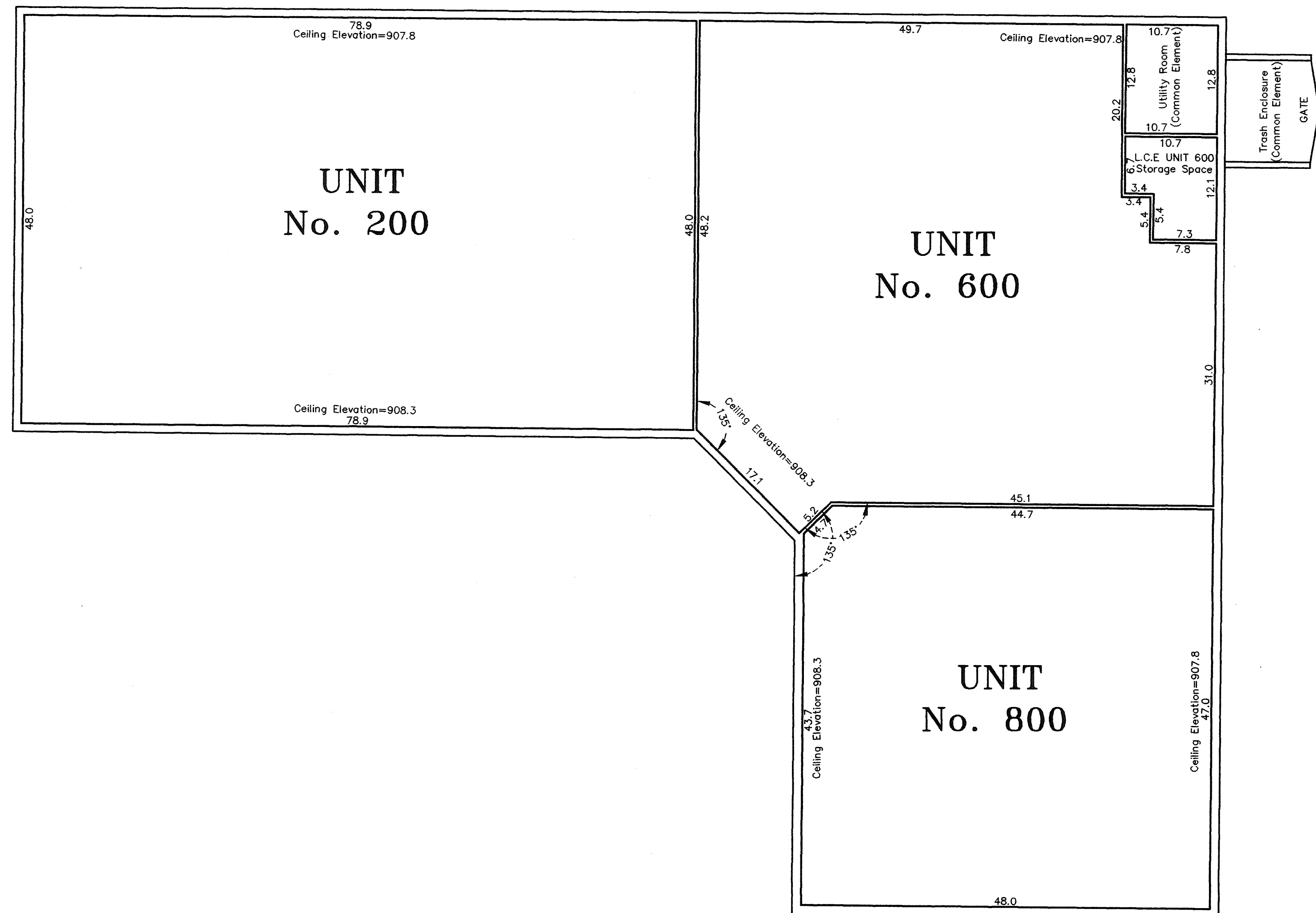
C.R. DOC. NO. 1990575.001

City of Andover
County of Anoka
Sec. 34, T. 32, R. 24

A CONDOMINIUM NORTHPOINTE BUILDING 1 CIC PLAT

UNIT DETAIL

MAIN LEVEL



All main level floor elevations = 895.2 feet.
Main level ceiling elevation Units 200, 600 and 800 varies from 907.8 feet to 908.3 feet.

Interior dimensions shown are measured to the unfinished surface of the wall studs, block walls and floors, and to the bottom of the roof trusses, and are shown in feet and tenths of a foot.

Elevations are referred to Benchmark as noted on site plan and are shown in feet and tenths of a foot.



RLK Incorporated
1321 Andover Blvd. NE Suite 114 Ham Lake, MN 55304
Hibbing, Ham Lake, Minnetonka, Twin Ports
Phone: (763) 434-7646