

SITE PLAN

CIC NUMBER 270

A CONDOMINIUM

CROWN COVE NORTH

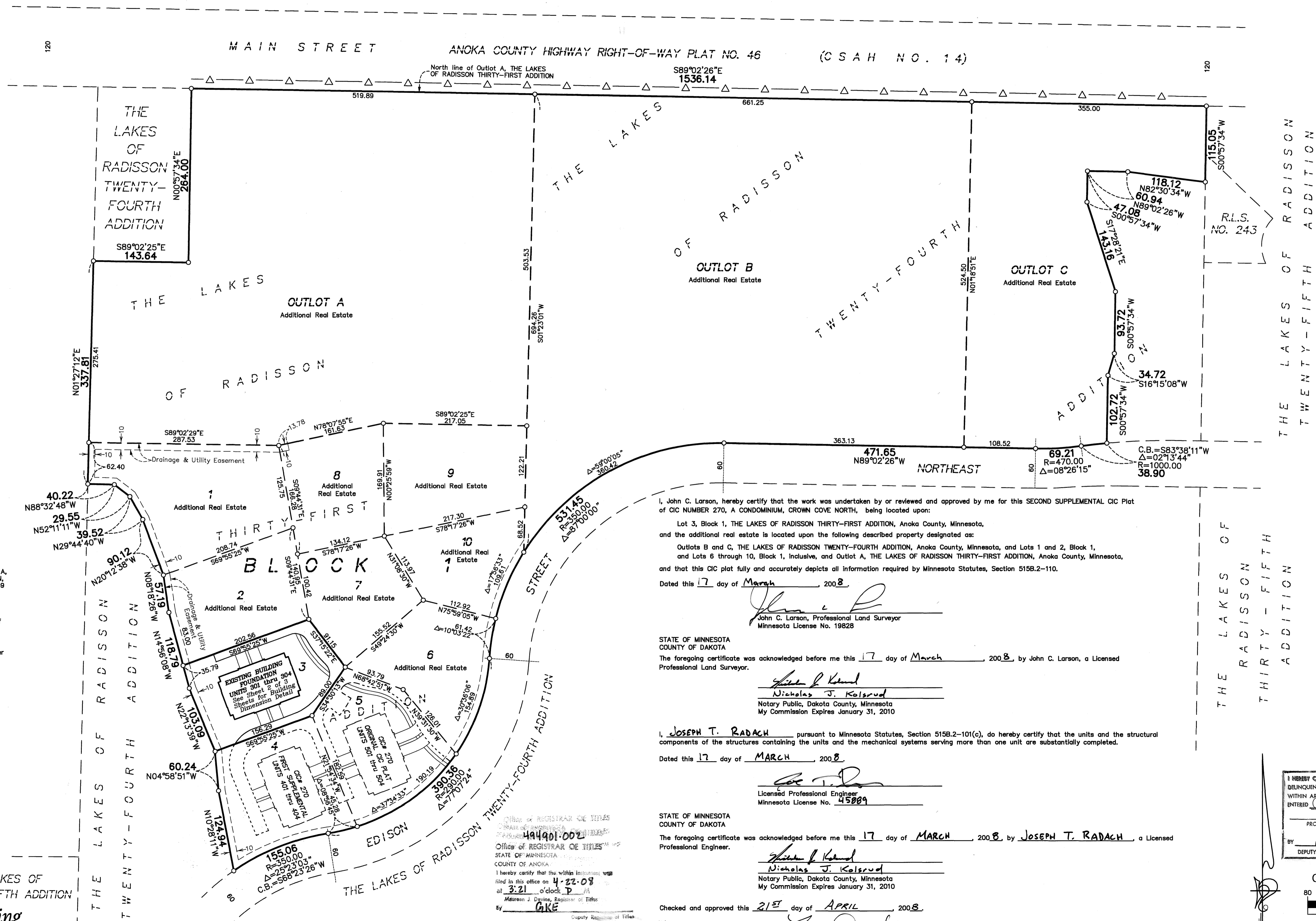
SECOND SUPPLEMENTAL CIC PLAT

Bk 10 of CIC pg 29

This SECOND SUPPLEMENTAL CIC plat is part of the SECOND SUPPLEMENTAL

to the Declaration recorded as Document No. 494901.002
on this 22nd day of April, 2008.

CITY OF BLAINE
COUNTY OF ANOKA
SEC. 10, TWP. 31, RGE. 23

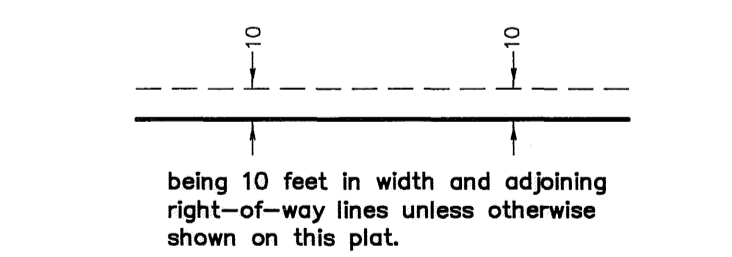


—△— Denotes Restricted Right of Access dedicated to Anoka County per the plat of THE LAKES OF RADISSON TWENTY-FOURTH ADDITION.
○ Denotes 1/2 inch by 14 inch iron monument set and marked with license number 20595.

Bearings are based on the North line of Outlot A, THE LAKES OF RADISSON THIRTY-FIRST ADDITION, which is assumed to have a bearing of South 89 degrees 02 minutes 26 seconds East.

BENCH MARKS
Cast Iron Monument at the Southeast Corner of Section 9, Township 31, Range 23. Elevation= 904.86 (NGVD 1929)
Cast Iron Monument at the North Quarter Corner of Section 9, Township 31, Range 23. Elevation= 903.09 (NGVD 1929)

DRAINAGE AND UTILITY EASEMENTS ARE SHOWN THUS: (NOT TO SCALE)



I, John C. Larson, hereby certify that the work was undertaken by or reviewed and approved by me for this SECOND SUPPLEMENTAL CIC Plat of CIC NUMBER 270, A CONDOMINIUM, CROWN COVE NORTH, being located upon:
Lot 3, Block 1, THE LAKES OF RADISSON THIRTY-FIRST ADDITION, Anoka County, Minnesota, and the additional real estate is located upon the following described property designated as:
Outlots B and C, THE LAKES OF RADISSON TWENTY-FOURTH ADDITION, Anoka County, Minnesota, and Lots 6 through 10, Block 1, inclusive, and Outlot A, THE LAKES OF RADISSON THIRTY-FIRST ADDITION, Anoka County, Minnesota, and that this CIC plat fully and accurately depicts all information required by Minnesota Statutes, Section 515B.2-110.
Dated this 17 day of March, 2008.

John C. Larson
John C. Larson, Professional Land Surveyor
Minnesota License No. 19828

STATE OF MINNESOTA
COUNTY OF DAKOTA
The foregoing certificate was acknowledged before me this 17 day of March, 2008, by John C. Larson, a Licensed Professional Land Surveyor.

Nicholas J. Kolsrud
Nicholas J. Kolsrud
Notary Public, Dakota County, Minnesota
My Commission Expires January 31, 2010

I, JOSEPH T. RADACH pursuant to Minnesota Statutes, Section 515B.2-101(c), do hereby certify that the units and the structural components of the structures containing the units and the mechanical systems serving more than one unit are substantially completed.
Dated this 17 day of MARCH, 2008.

Joseph T. Radach
Licensed Professional Engineer
Minnesota License No. 45889

STATE OF MINNESOTA
COUNTY OF DAKOTA
The foregoing certificate was acknowledged before me this 17 day of MARCH, 2008, by JOSEPH T. RADACH, a Licensed Professional Engineer.

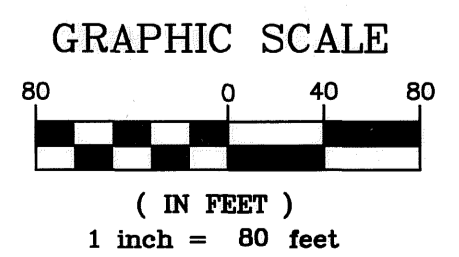
Nicholas J. Kolsrud
Nicholas J. Kolsrud
Notary Public, Dakota County, Minnesota
My Commission Expires January 31, 2010

Checked and approved this 21st day of APRIL, 2008.

Larry D. Jahn
Anoka County Surveyor

Office of REGISTRAR OF TITLES
STATE OF MINNESOTA
COUNTY OF ANOKA
I hereby certify that the within instrument was filed in this office on 4-22-08 at 3:21 o'clock P.M.
Maureen J. Devine, Registrar of Titles
By GKE Deputy Registrar of Titles

I HEREBY CERTIFY THAT THE CURRENT AND DELINQUENT TAXES ON THE LANDS DESCRIBED WITHIN ARE PAID AND THE TRANSFER IS ENTERED
04/22/2008
MAUREEN J. DEVINE
PROPERTY TAX ADMINISTRATOR
BY *Maureen J. Devine*
DEPUTY PROPERTY TAX ADMINISTRATOR



PIONEERengineering
CIVIL ENGINEERS LAND PLANNERS LAND SURVEYORS LANDSCAPE ARCHITECTS

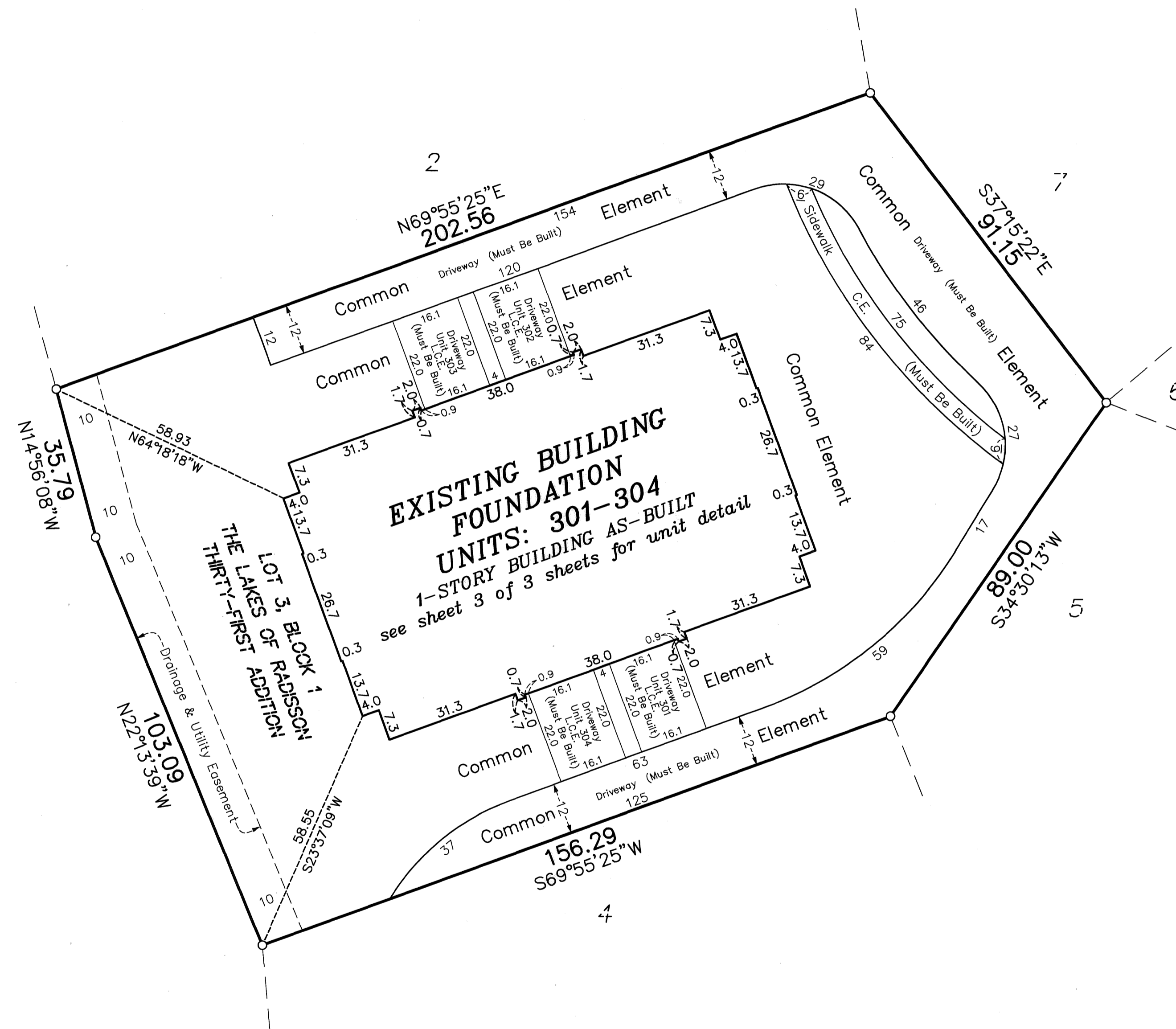
BUILDING DIMENSION DETAIL
(AS-BUILT)

CIC NUMBER 270 A CONDOMINIUM CROWN COVE NORTH SECOND SUPPLEMENTAL CIC PLAT

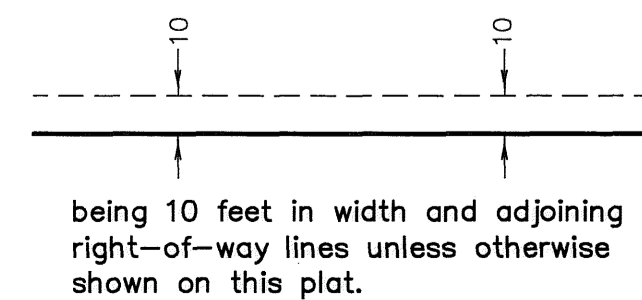
Bk 10 of CIC pg 29

C.R. DOC. NO. 494901.002

CITY OF BLAINE
COUNTY OF ANOKA
SEC. 10, TWP. 31, RGE. 23



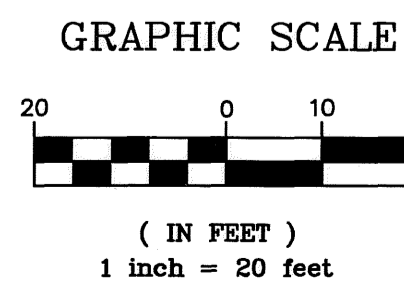
DRAINAGE AND UTILITY
EASEMENTS ARE SHOWN THUS:
(NOT TO SCALE)



○ Denotes 1/2 inch by 14 inch iron monument
set and marked with license number 20595

L.C.E. = Limited Common Element
C.E. = Common Element

Bearings are based on the North line of Outlot A,
THE LAKES OF RADISSON THIRTY-FIRST ADDITION,
which is assumed to have a bearing of South 89
degrees 02 minutes 26 seconds East.



PIONEERengineering
CIVIL ENGINEERS LAND PLANNERS LAND SURVEYORS LANDSCAPE ARCHITECTS

Bk 10 of CIC pg 29

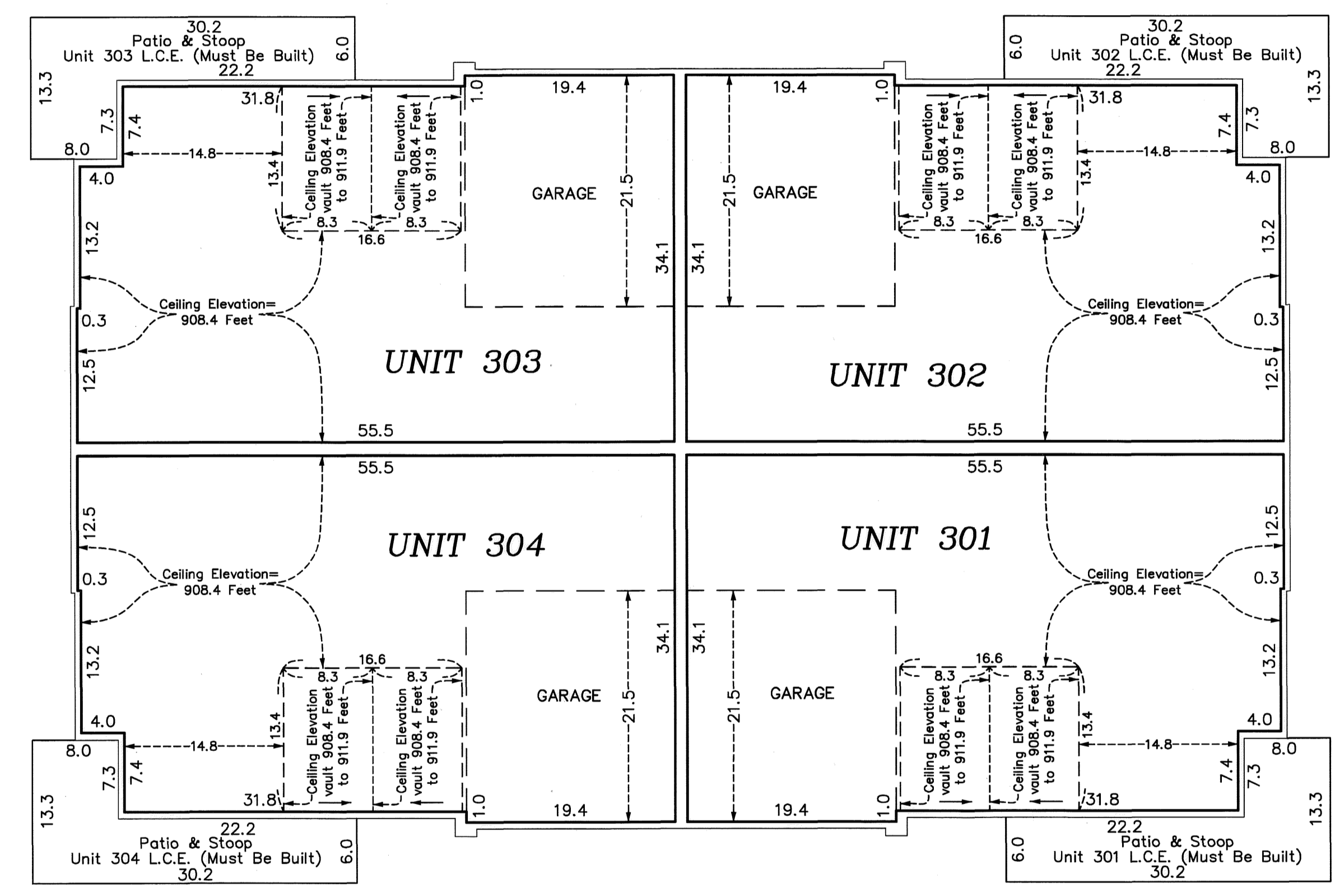
UNIT DETAIL
(AS-BUILT)

CIC NUMBER 270 A CONDOMINIUM CROWN COVE NORTH SECOND SUPPLEMENTAL CIC PLAT

C.R. DOC. NO. 494901-002

CITY OF BLAINE
COUNTY OF ANOKA
SEC. 10, TWP. 31, RGE. 23

MAIN LEVEL



Main Level Elevations

- All units garage floor elevation at garage door = 899.0 feet
- All units garage floor elevation at rear of garage = 899.3 feet
- All units garage ceiling elevation = 908.4 feet
- All units main level floor elevation = 899.3 feet
- All units main level ceiling elevations vary from = 908.4 feet to 911.9 feet

Elevations are referenced to a benchmark as noted on the site plan on Sheet 1 of 3 Sheets and are shown in feet and tenths of a foot.

L.C.E. = Limited Common Element

Interior dimensions shown are measured to the unfinished surface of the walls, floors and ceiling.

