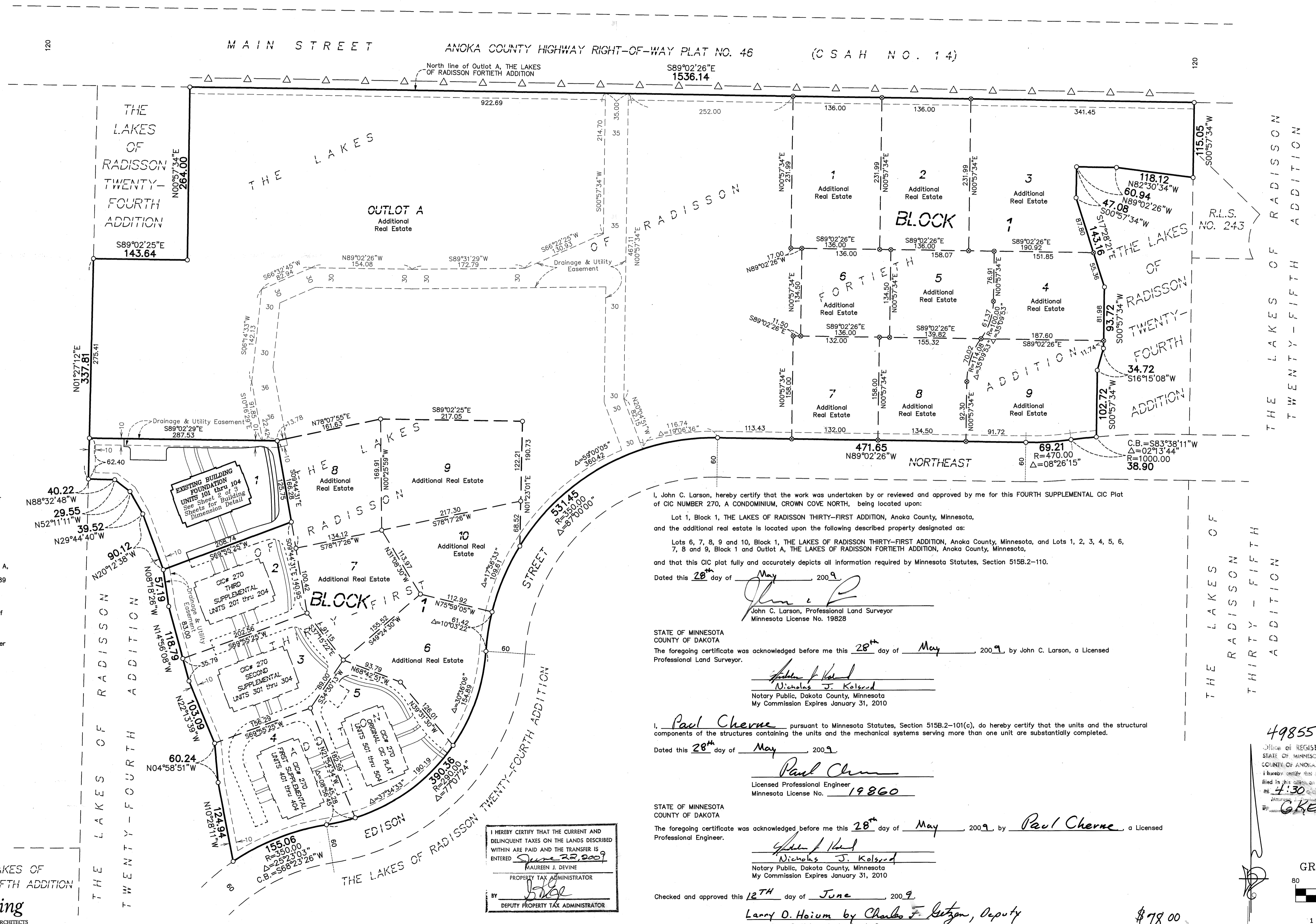


SITE PLAN

CIC NUMBER 270 A CONDOMINIUM CROWN COVE NORTH FOURTH SUPPLEMENTAL CIC PLAT

to the Declaration recorded as Document No. 498559.002
on this 22 day of JUNE, 2009.

CITY OF BLAINE
COUNTY OF ANOKA
SEC. 10, TWP. 31, RGE. 23



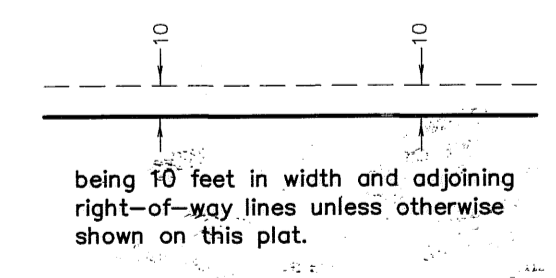
- △— Denotes Restricted Right of Access dedicated to Anoka County per the plot of THE LAKES OF RADISSON TWENTY-FOURTH ADDITION.
- Denotes 1/2 inch by 14 inch iron monument set and marked with license number 20595.
- ⊙ Denotes 1/2 inch by 14 inch iron monument set and marked with license number 19828.

Bearings are based on the North line of Outlot A, THE LAKES OF RADISSON FORTIETH ADDITION, which is assumed to have a bearing of South 89 degrees 02 minutes 26 seconds East.

BENCH MARKS
Cast Iron Monument at the Southeast Corner of Section 9, Township 31, Range 23. Elevation= 904.86 (NGVD 1929)

Cast Iron Monument at the North Quarter Corner of Section 9, Township 31, Range 23. Elevation= 903.09 (NGVD 1929)

DRAINAGE AND UTILITY EASEMENTS ARE SHOWN THUS:
(NOT TO SCALE)



THE LAKES OF RADISSON FIFTH ADDITION

PIONEERengineering
CIVIL ENGINEERS LAND PLANNERS LAND SURVEYORS LANDSCAPE ARCHITECTS

I HEREBY CERTIFY THAT THE CURRENT AND DELINQUENT TAXES ON THE LANDS DESCRIBED WITHIN ARE PAID AND THE TRANSFER IS ENTERED
June 23, 2009
MAUREN J. DEVINE
PROPERTY TAX ADMINISTRATOR

I, John C. Larson, hereby certify that the work was undertaken by or reviewed and approved by me for this FOURTH SUPPLEMENTAL CIC Plat of CIC NUMBER 270, A CONDOMINIUM, CROWN COVE NORTH, being located upon:
Lot 1, Block 1, THE LAKES OF RADISSON THIRTY-FIRST ADDITION, Anoka County, Minnesota, and the additional real estate is located upon the following described property designated as:
Lots 6, 7, 8, 9 and 10, Block 1, THE LAKES OF RADISSON THIRTY-FIRST ADDITION, Anoka County, Minnesota, and Lots 1, 2, 3, 4, 5, 6, 7, 8 and 9, Block 1 and Outlot A, THE LAKES OF RADISSON FORTIETH ADDITION, Anoka County, Minnesota, and that this CIC plat fully and accurately depicts all information required by Minnesota Statutes, Section 515B.2-110.
Dated this 28th day of May, 2009.

John C. Larson
John C. Larson, Professional Land Surveyor
Minnesota License No. 19828

STATE OF MINNESOTA
COUNTY OF DAKOTA
The foregoing certificate was acknowledged before me this 28th day of May, 2009, by John C. Larson, a Licensed Professional Land Surveyor.

Nicholas J. Kolsrud
Nicholas J. Kolsrud
Notary Public, Dakota County, Minnesota
My Commission Expires January 31, 2010

I, Paul Cherne pursuant to Minnesota Statutes, Section 515B.2-101(c), do hereby certify that the units and the structural components of the structures containing the units and the mechanical systems serving more than one unit are substantially completed.
Dated this 28th day of May, 2009.

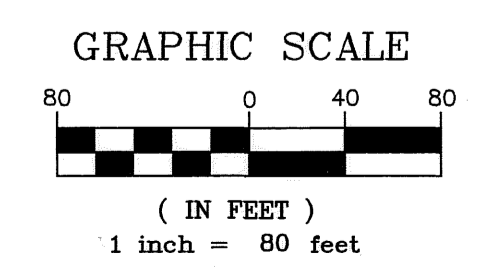
Paul Cherne
Licensed Professional Engineer
Minnesota License No. 19860

STATE OF MINNESOTA
COUNTY OF DAKOTA
The foregoing certificate was acknowledged before me this 28th day of May, 2009, by Paul Cherne a Licensed Professional Engineer.

Nicholas J. Kolsrud
Nicholas J. Kolsrud
Notary Public, Dakota County, Minnesota
My Commission Expires January 31, 2010

Checked and approved this 12TH day of June, 2009.
Larry D. Holm by Charles F. Guston, Deputy
Larry D. Holm, Anoka County Surveyor

498559.002
Office of REGISTRAR OF TITLES
STATE OF MINNESOTA
COUNTY OF ANOKA
I hereby certify that the within instrument was filed in this office on JUNE 22, at 4:30 o'clock P.M.
GKE
Deputy Registrar of Titles



BUILDING DIMENSION DETAIL
(AS-BUILT)

CIC NUMBER 270

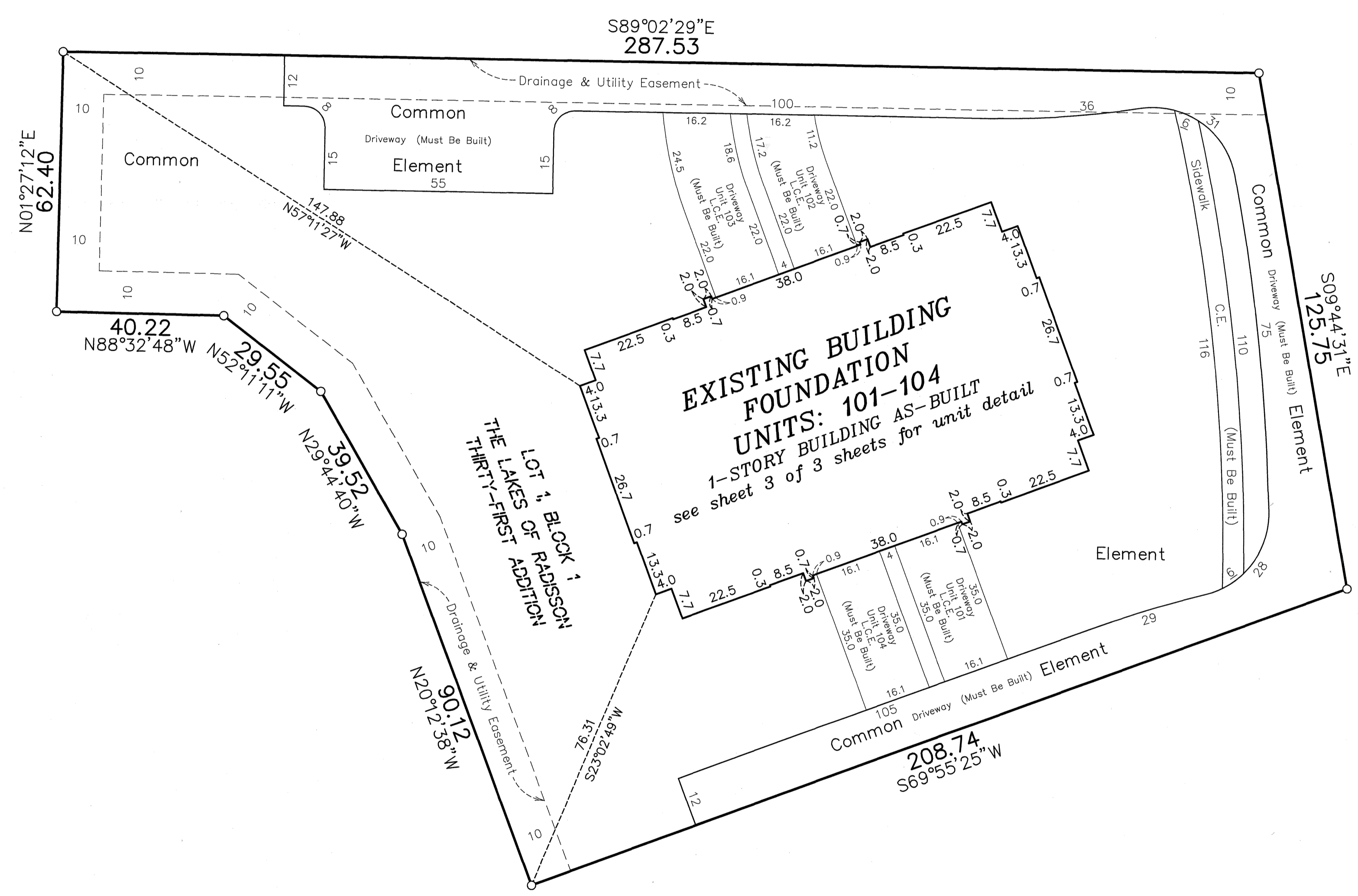
A CONDOMINIUM

CROWN COVE NORTH

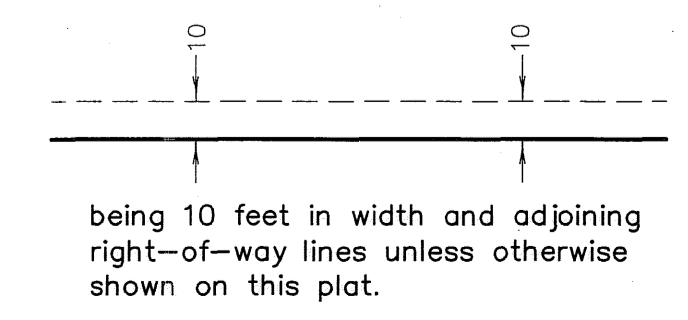
FOURTH SUPPLEMENTAL CIC PLAT

C.R. DOC. NO. 498559.002

CITY OF BLAINE
COUNTY OF ANOKA
SEC. 10, TWP. 31, RGE. 23



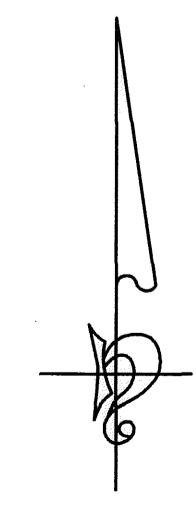
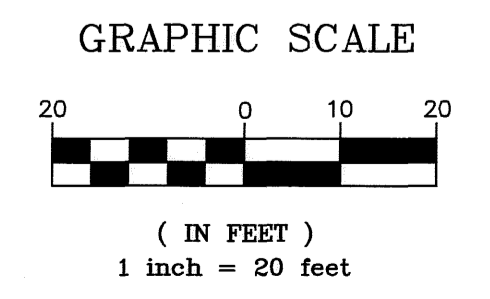
DRAINAGE AND UTILITY
EASEMENTS ARE SHOWN THUS:
(NOT TO SCALE)



○ Denotes 1/2 inch by 14 inch iron monument set and marked with license number 20595

L.C.E. = Limited Common Element
C.E. = Common Element

Bearings are based on the North line of Outlot A, THE LAKES OF RADISSON THIRTY-FIRST ADDITION, which is assumed to have a bearing of South 89 degrees 02 minutes 26 seconds East.



UNIT DETAIL
(AS-BUILT)

CIC NUMBER 270

A CONDOMINIUM

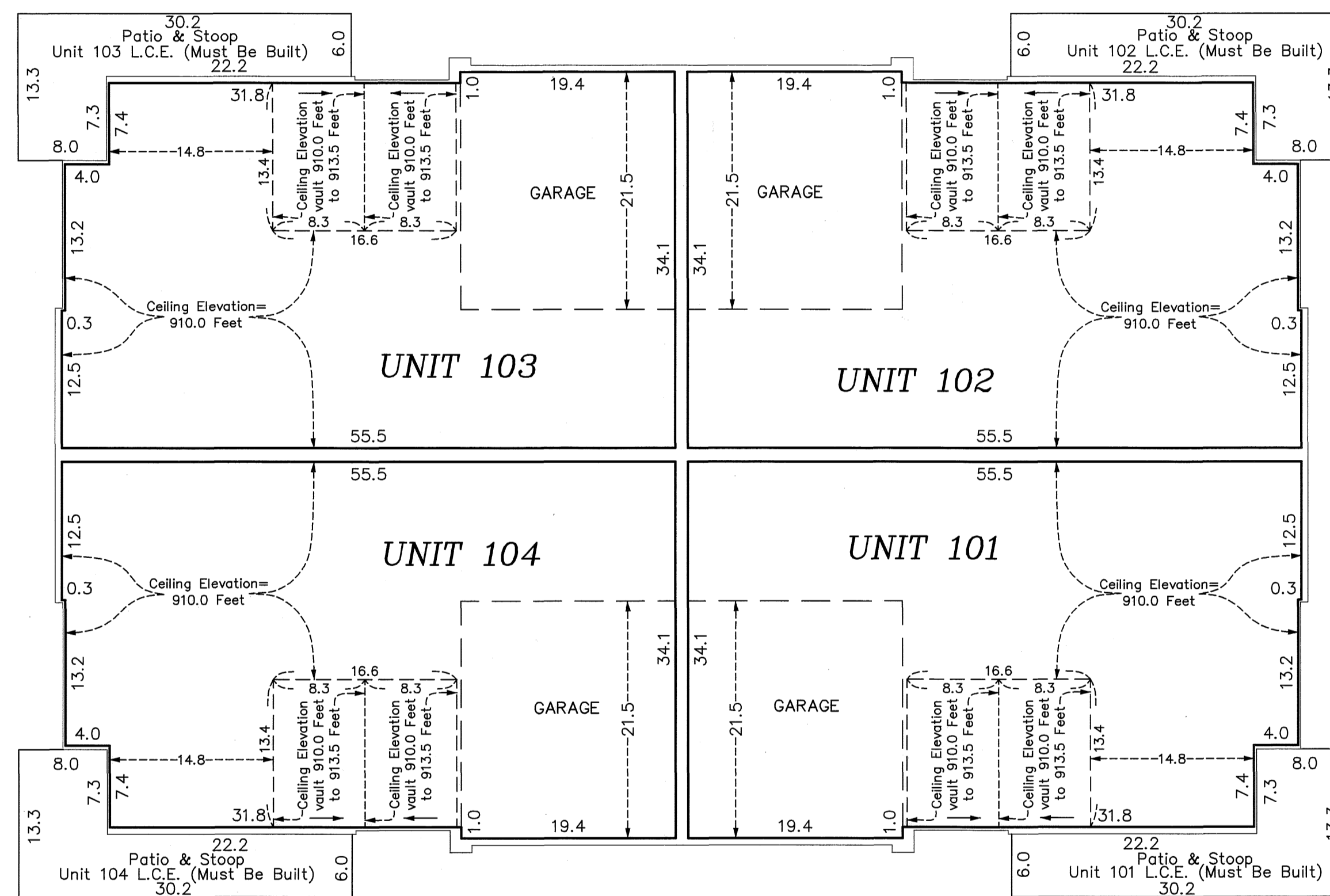
CROWN COVE NORTH

FOURTH SUPPLEMENTAL CIC PLAT

C.R. DOC. NO. 498559.002

CITY OF BLAINE
COUNTY OF ANOKA
SEC. 10, TWP. 31, RGE. 23

MAIN LEVEL



Main Level Elevations

All units garage floor elevation at garage door = 900.5 feet
 All units garage floor elevation at rear of garage = 900.9 feet
 All units garage ceiling elevation = 910.0 feet

All units main level floor elevation = 900.9 feet
 All units main level ceiling elevations vary from = 910.0 feet to 913.5 feet

Elevations are referenced to a benchmark as noted on the site plan on Sheet 1 of 3 Sheets and are shown in feet and tenths of a foot.

L.C.E. = Limited Common Element

Interior dimensions shown are measured to the unfinished surface of the walls, floors and ceiling.

