

CIC NUMBER 270

A CONDOMINIUM

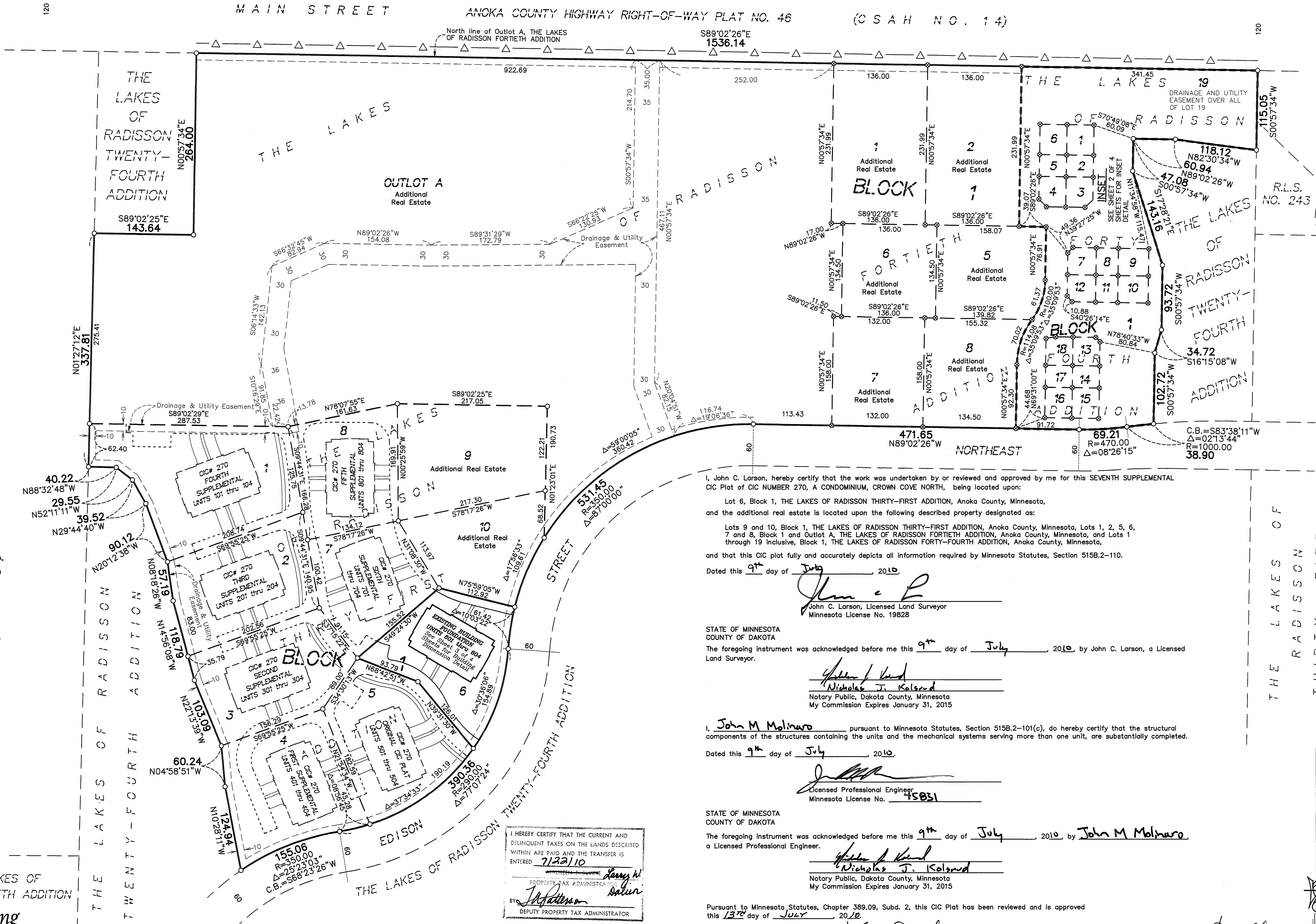
CROWN COVE NORTH

SEVENTH SUPPLEMENTAL CIC PLAT

BK 11 of CIC pg 4

This SEVENTH SUPPLEMENTAL CIC plat is part of the SEVENTH SUPPLEMENTAL to the Declaration recorded as Document No. 502107.002 on this 22nd day of July, 2010.

CITY OF BLAINE
COUNTY OF ANOKA
SEC. 10, TWP. 31, RGE. 23

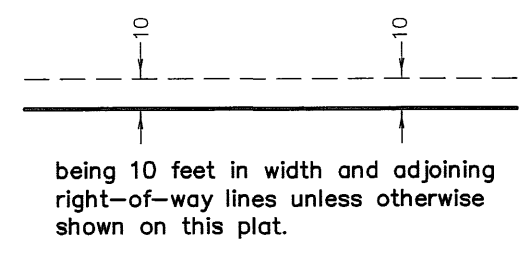


- △ Denotes Restricted Right of Access dedicated to Anoka County per the plat of THE LAKES OF RADISSON TWENTY-FOURTH ADDITION.
- Denotes 1/2 inch by 14 inch iron monument set and marked with license number 20595.
- Denotes 1/2 inch by 14 inch iron monument set and marked with license number 19828.

Bearings are based on the North line of Outlot A, THE LAKES OF RADISSON FORTIETH ADDITION, which is assumed to have a bearing of South 89 degrees 02 minutes 26 seconds East.

BENCH MARKS
Cast Iron Monument at the Southeast Corner of Section 9, Township 31, Range 23. Elevation= 904.86 (NGVD 1929)
Cast Iron Monument at the North Quarter Corner of Section 9, Township 31, Range 23. Elevation= 903.09 (NGVD 1929)

DRAINAGE AND UTILITY EASEMENTS ARE SHOWN THUS: (NOT TO SCALE)



being 10 feet in width and adjoining right-of-way lines unless otherwise shown on this plat.

PIONEER Engineering
CIVIL ENGINEERS LAND PLANNERS LAND SURVEYORS LANDSCAPE ARCHITECTS

I HEREBY CERTIFY THAT THE CURRENT AND DELINQUENT TAXES ON THE LANDS DESCRIBED WITHIN ARE PAID AND THE TRANSFER IS ENTERED
7122110
PROPERTY TAX ADMINISTRATOR
By: Larry D. Helm
DEPUTY PROPERTY TAX ADMINISTRATOR

I, John C. Larson, hereby certify that the work was undertaken by or reviewed and approved by me for this SEVENTH SUPPLEMENTAL CIC Plat of CIC NUMBER 270, A CONDOMINIUM, CROWN COVE NORTH, being located upon:

- Lot 6, Block 1, THE LAKES OF RADISSON THIRTY-FIRST ADDITION, Anoka County, Minnesota, and the additional real estate is located upon the following described property designated as:
- Lots 9 and 10, Block 1, THE LAKES OF RADISSON THIRTY-FIRST ADDITION, Anoka County, Minnesota, Lots 1, 2, 5, 6, 7 and 8, Block 1 and Outlot A, THE LAKES OF RADISSON FORTIETH ADDITION, Anoka County, Minnesota, and Lots 1 through 19 inclusive, Block 1, THE LAKES OF RADISSON FORTY-FOURTH ADDITION, Anoka County, Minnesota,

and that this CIC plat fully and accurately depicts all information required by Minnesota Statutes, Section 515B.2-110.

Dated this 9th day of July, 2010.

John C. Larson
John C. Larson, Licensed Land Surveyor
Minnesota License No. 19828

STATE OF MINNESOTA
COUNTY OF DAKOTA
The foregoing instrument was acknowledged before me this 9th day of July, 2010, by John C. Larson, a Licensed Land Surveyor.

Nicholas J. Kolund
Notary Public, Dakota County, Minnesota
My Commission Expires January 31, 2015

I, John M. Molinaro pursuant to Minnesota Statutes, Section 515B.2-10(c), do hereby certify that the structural components of the structures containing the units and the mechanical systems serving more than one unit, are substantially completed.

Dated this 9th day of July, 2010.

John M. Molinaro
Licensed Professional Engineer
Minnesota License No. 75851

STATE OF MINNESOTA
COUNTY OF DAKOTA
The foregoing instrument was acknowledged before me this 9th day of July, 2010, by John M. Molinaro a Licensed Professional Engineer.

Nicholas J. Kolund
Notary Public, Dakota County, Minnesota
My Commission Expires January 31, 2015

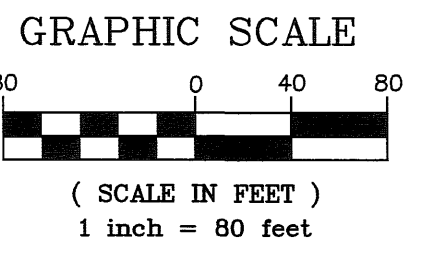
Pursuant to Minnesota Statutes, Chapter 389.09, Subd. 2, this CIC Plat has been reviewed and is approved this 13th day of July, 2010.

By: Larry D. Helm
Larry D. Helm, Anoka County Surveyor

THE LAKES OF RADISSON THIRTY-FIFTH ADDITION

502107.002

Office of REGISTRAR OF TITLES
STATE OF MINNESOTA
COUNTY OF ANOKA
I hereby certify that the within instrument was filed in this office on 7-22-10 at 3:48 o'clock P.M.
By: Larry D. Helm
Deputy Registrar of Titles



INSET

CIC NUMBER 270

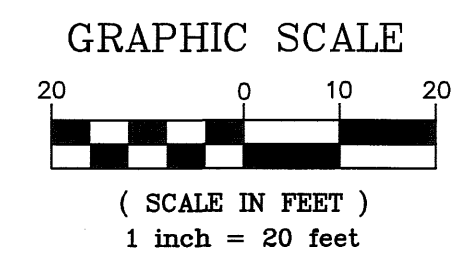
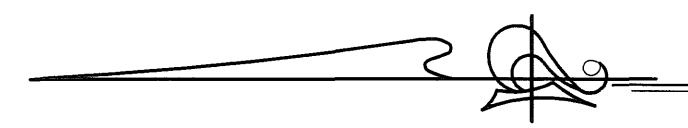
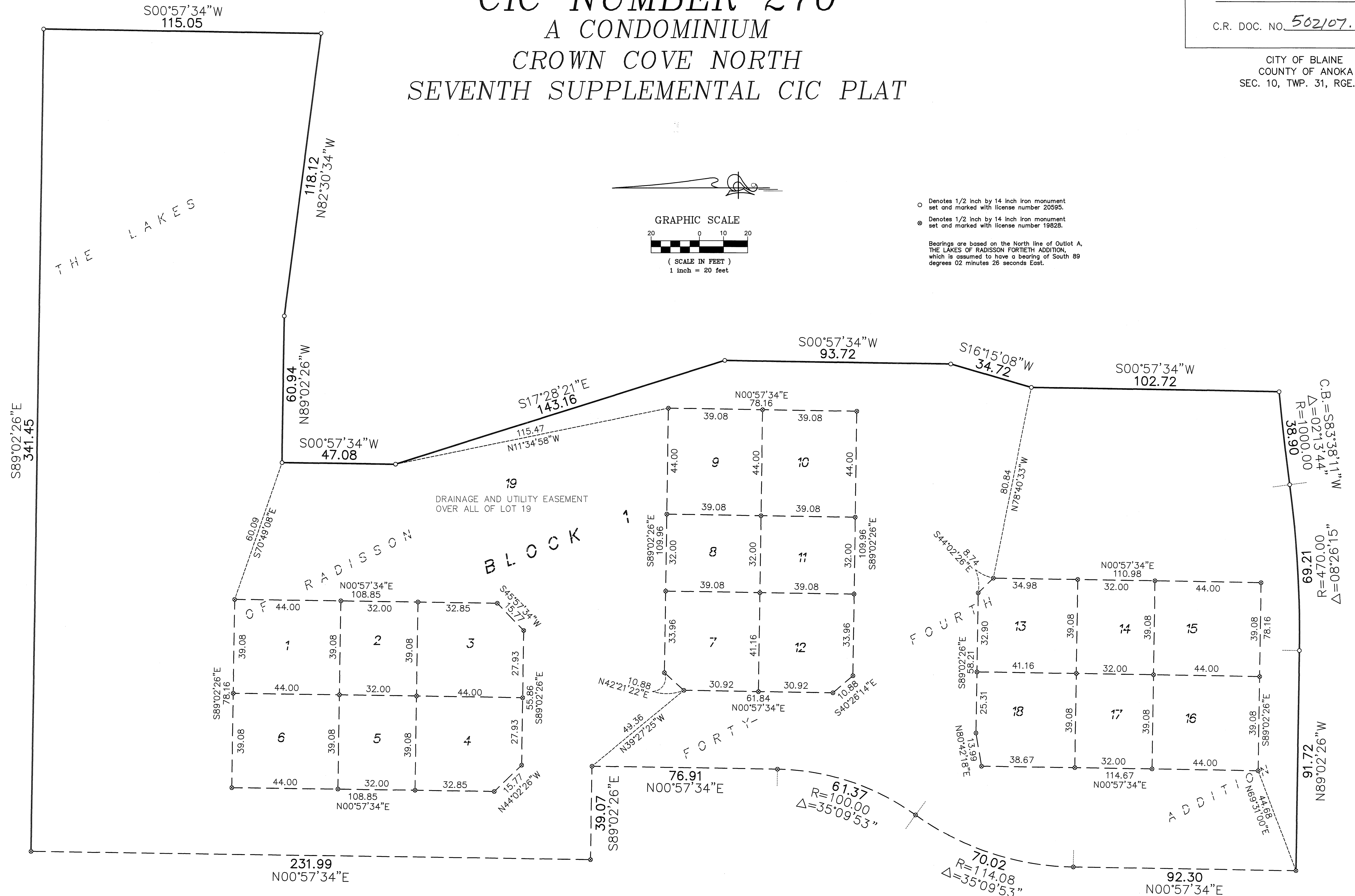
A CONDOMINIUM

CROWN COVE NORTH

SEVENTH SUPPLEMENTAL CIC PLAT

C.R. DOC. NO. 502107.002

CITY OF BLAINE
COUNTY OF ANOKA
SEC. 10, TWP. 31, RGE. 23



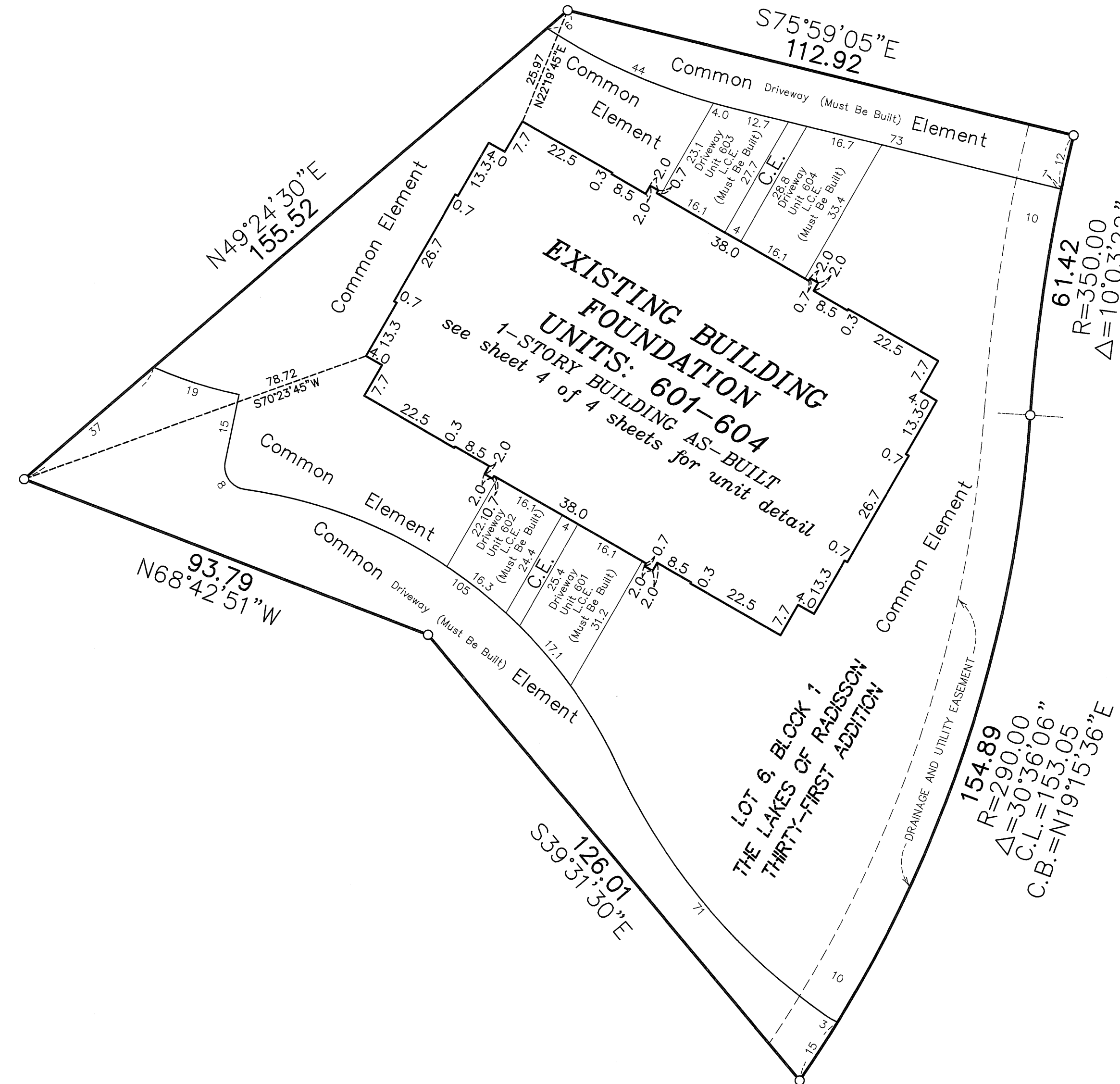
○ Denotes 1/2 inch by 14 inch iron monument set and marked with license number 20595.
 ⊗ Denotes 1/2 inch by 14 inch iron monument set and marked with license number 19828.
 Bearings are based on the North line of Outlot A, THE LAKES OF RADISSON FORTIETH ADDITION, which is assumed to have a bearing of South 89 degrees 02 minutes 26 seconds East.

(AS-BUILT)

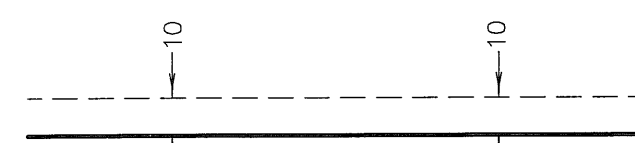
CIC NUMBER 270 A CONDOMINIUM CROWN COVE NORTH SEVENTH SUPPLEMENTAL CIC PLAT

C.R. DOC. NO. 502107.002

CITY OF BLAINE
COUNTY OF ANOKA
SEC. 10, TWP. 31, RGE. 23



DRAINAGE AND UTILITY
EASEMENTS ARE SHOWN THUS:
(NOT TO SCALE)



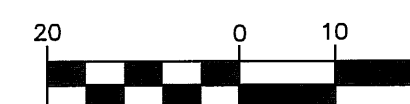
being 10 feet in width and adjoining
right-of-way lines unless otherwise
shown on this plat.

○ Denotes 1/2 inch by 14 inch iron monument
set and marked with license number 20595

L.C.E. = Limited Common Element
C.E. = Common Element

Bearings are based on the North line of Outlot A,
THE LAKES OF RADISSON FORTIETH ADDITION,
which is assumed to have a bearing of South 89
degrees 02 minutes 26 seconds East.

GRAPHIC SCALE



(SCALE IN FEET)
1 inch = 20 feet



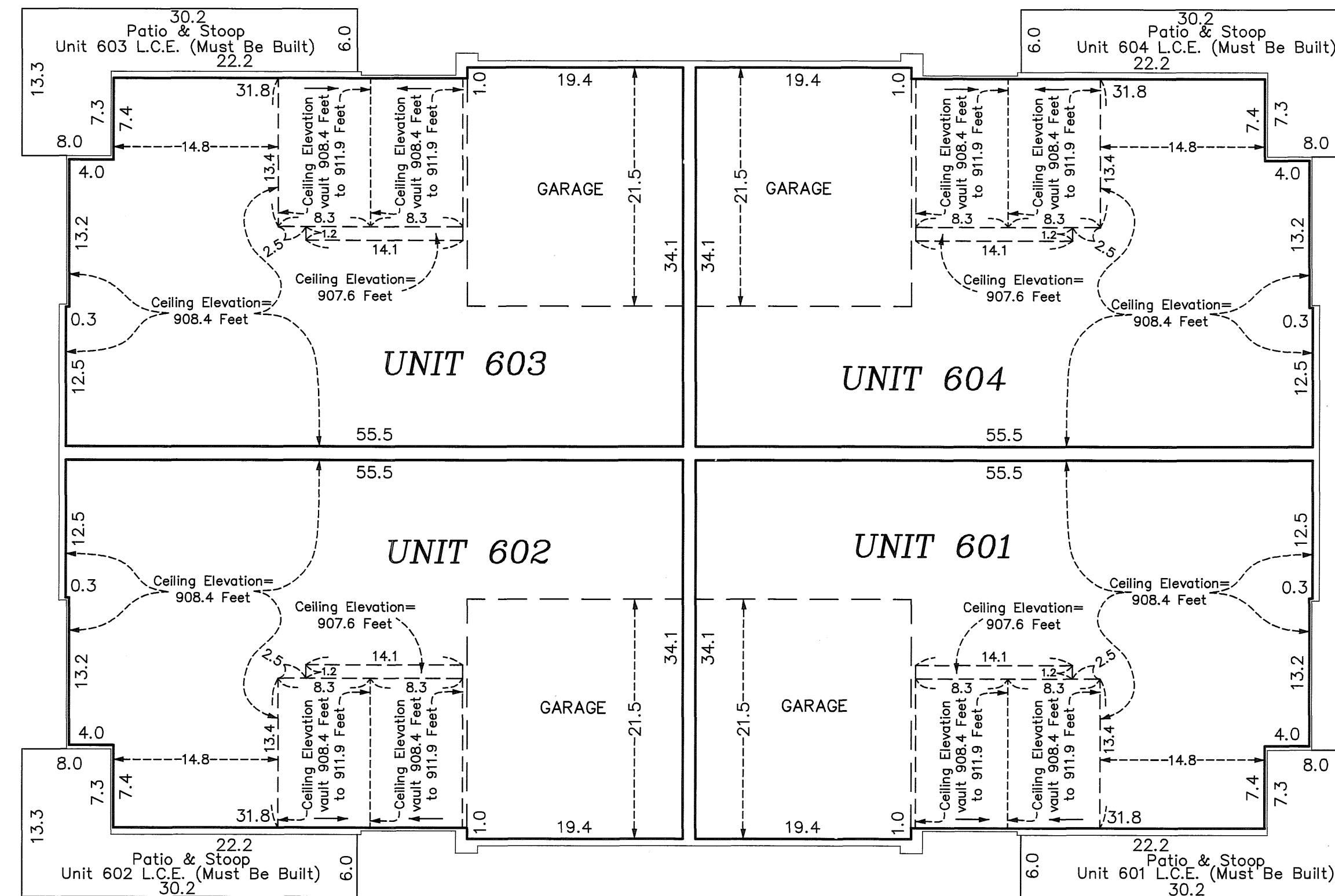
UNIT DETAIL
(AS-BUILT)

CIC NUMBER 270
A CONDOMINIUM
CROWN COVE NORTH
SEVENTH SUPPLEMENTAL CIC PLAT

C.R. DOC. NO. 502107.002

CITY OF BLAINE
COUNTY OF ANOKA
SEC. 10, TWP. 31, RGE. 23

MAIN LEVEL



Main Level Elevations

All units garage floor elevation at garage door = 899.0 feet
 All units garage floor elevation at rear of garage = 899.3 feet
 All units garage ceiling elevation = 908.4 feet

 All units main level floor elevation = 899.3 feet
 All units main level ceiling elevations vary from = 907.6 feet to 911.9 feet

Elevations are referenced to a benchmark as noted on the site plan on Sheet 1 of 4 Sheets and are shown in feet and tenths of a foot.

L.C.E. = Limited Common Element

Interior dimensions shown are measured to the unfinished surface of the walls, floors and ceiling.

