

CIC NUMBER 276
A CONDOMINIUM
LEGACY CREEK
THIRD SUPPLEMENTAL
CIC PLAT

This THIRD SUPPLEMENTAL CIC Plat is part of the THIRD SUPPLEMENTAL to the Declaration recorded as Document Number 2033010.002 on this 30 day of MAY, 2012.

CITY OF BLAINE
COUNTY OF ANOKA
SEC. 2, T. 31, R. 23

I, Thomas R. Balluff, do hereby certify that the work was undertaken by or reviewed and approved by me for this THIRD SUPPLEMENTAL CIC Plat of CIC NUMBER 276, A CONDOMINIUM, LEGACY CREEK, being located upon:

Lot 1, Block 6, LEGACY CREEK, according to the recorded plat thereof, Anoka County, Minnesota;

and the Additional Real Estate is located upon the following described property designated as:

Lots 2 and 3, Block 6; Lot 1, Block 7; Lots 1, 2, 4, 5, and 6, inclusive, Block 8; and Outlots B, C, D, E, F, and G, LEGACY CREEK, according to the recorded plat thereof, Anoka County, Minnesota.

and that this CIC Plat fully and accurately depicts all information required by Minnesota Statutes, Section 515B.2-110(c).

Dated this 25th day of APRIL, 2012.

Thomas R. Balluff
Thomas R. Balluff, Land Surveyor
Minnesota License No. 40361

STATE OF MINNESOTA
COUNTY OF Anoka

The foregoing instrument was acknowledged before me this 25th day of April, 2012 by Thomas R. Balluff.

Kelly A. Street
KELLY A. STREET
Notary Public, Anoka, Minnesota
My Commission Expires 1-31-2014

I, Joseph T. Radach, pursuant to Minnesota Statutes, Section 515B.2-101(c), do hereby certify that the structural components of the structures containing the units and the mechanical systems serving more than one unit, are substantially completed.

Dated this 25 day of APRIL, 2012.

Joseph T. Radach
Joseph T. Radach, Licensed Engineer
Minnesota License No. 45889

STATE OF MINNESOTA
COUNTY OF Anoka

The foregoing instrument was acknowledged before me this 25th day of April, 2012 by Joseph T. Radach, a Licensed Engineer.

Kelly A. Street
KELLY A. STREET
Notary Public, Anoka, Minnesota
My Commission Expires 1-31-2014

ANOKA COUNTY SURVEYOR

Pursuant to Minnesota Statutes, Chapter 389.09, Subd.2, this CIC Plat has been reviewed and is approved this 30th day of MAY, 2012.

2033010.002

By: Larry D. Holm
Larry D. Holm, Anoka County Surveyor

Office of RECORDER/REGISTRAR
OF TITLES

STATE OF MINNESOTA COUNTY OF ANOKA

I hereby certify that the within instrument was filed

this office for record on the 30 day of

MAY 2012 at 9:50 o'clock AM

and was duly recorded in book 11 page

15

Larry W. Dalien
Recorder/Registrar of Titles

By Mel Windsparger
Deputy

HEREBY CERTIFY THAT THE CURRENT AND DELINQUENT TAXES ON THE LANDS DESCRIBED WITHIN ARE PAID AND THE TRANSFER IS ENTERED May 30, 2012
Larry W. Dalien
PROPERTY TAX ADMINISTRATOR
BY Mel Windsparger
DEPUTY

\$ 56.00

SITE PLAN

SAVANNA

GROVE

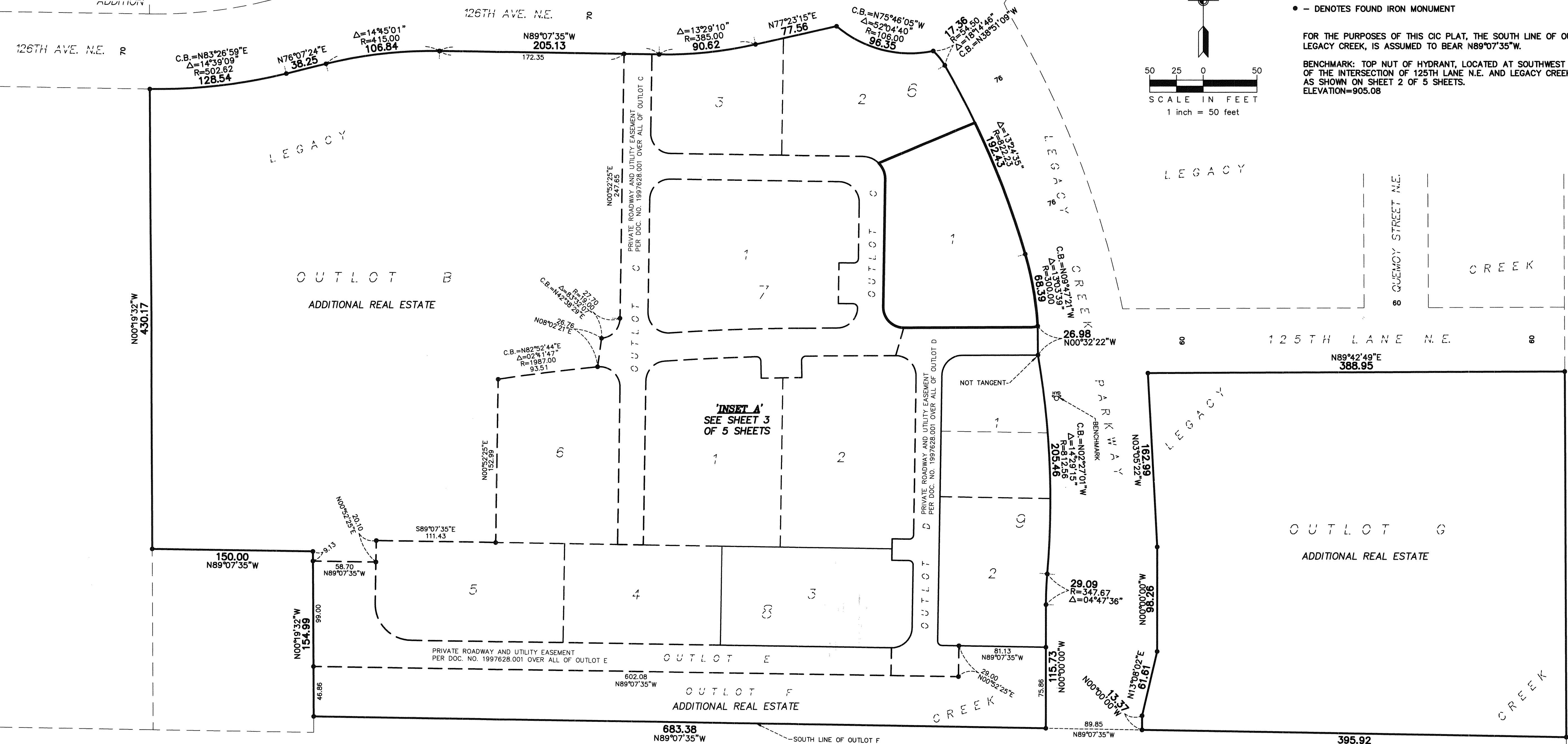
2ND

ADDITION

CIC NUMBER 276 A CONDOMINIUM LEGACY CREEK THIRD SUPPLEMENTAL CIC PLAT

C.R. DOC. NO. 2033010.002

BK 11 ABST CITY OF BLAINE
PAGE 15 COUNTY OF ANOKA
SEC. 2, T. 31, R. 23



- ⊕ - DENOTES EXISTING HYDRANT
- - DENOTES FOUND IRON MONUMENT

FOR THE PURPOSES OF THIS CIC PLAT, THE SOUTH LINE OF OUTLOT F, LEGACY CREEK, IS ASSUMED TO BEAR N89°07'35"W.

BENCHMARK: TOP NUT OF HYDRANT, LOCATED AT SOUTHWEST QUADRANT OF THE INTERSECTION OF 125TH LANE N.E. AND LEGACY CREEK PARKWAY AS SHOWN ON SHEET 2 OF 5 SHEETS. ELEVATION=905.08

120 120 135 135 120 120
(ANOKA CO. HWY. R/W PLAT NO. 46)
MAIN STREET N.E. (C.S.A.H. NO. 14)
125TH AVENUE N.E.



THE LAKES OF RADISSON TWENTY-THIRD ADDITION

THE LAKES OF RADISSON TWENTY-THIRD ADDITION

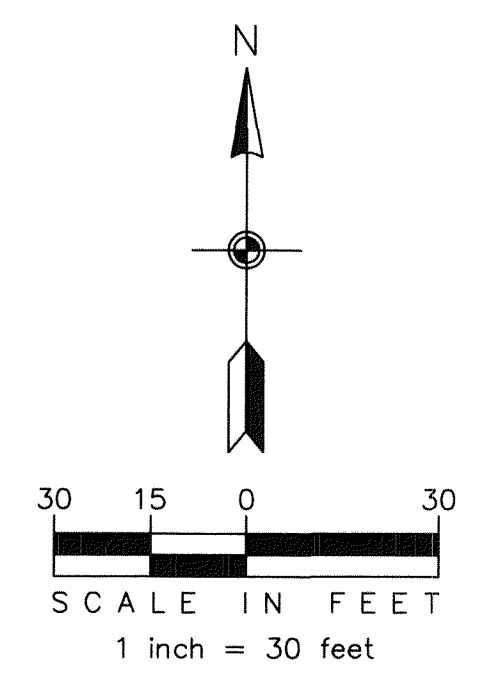
SITE PLAN

CIC NUMBER 276 A CONDOMINIUM LEGACY CREEK THIRD SUPPLEMENTAL CIC PLAT

C.R. DOC. NO. 2033010.002

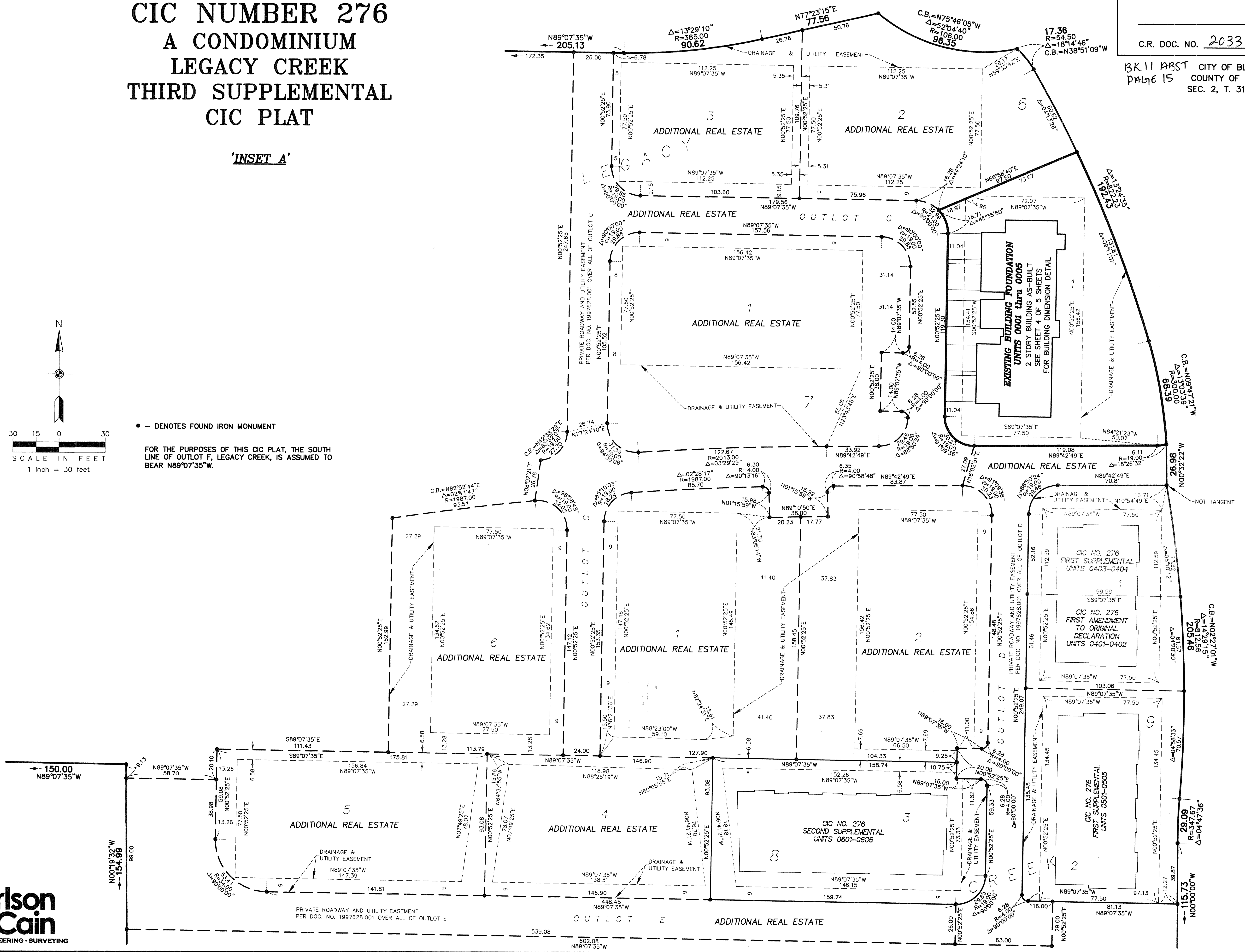
BK 11 ABST CITY OF BLAINE
PAGE 15 COUNTY OF ANOKA
SEC. 2, T. 31, R. 23

'INSET A'



• - DENOTES FOUND IRON MONUMENT

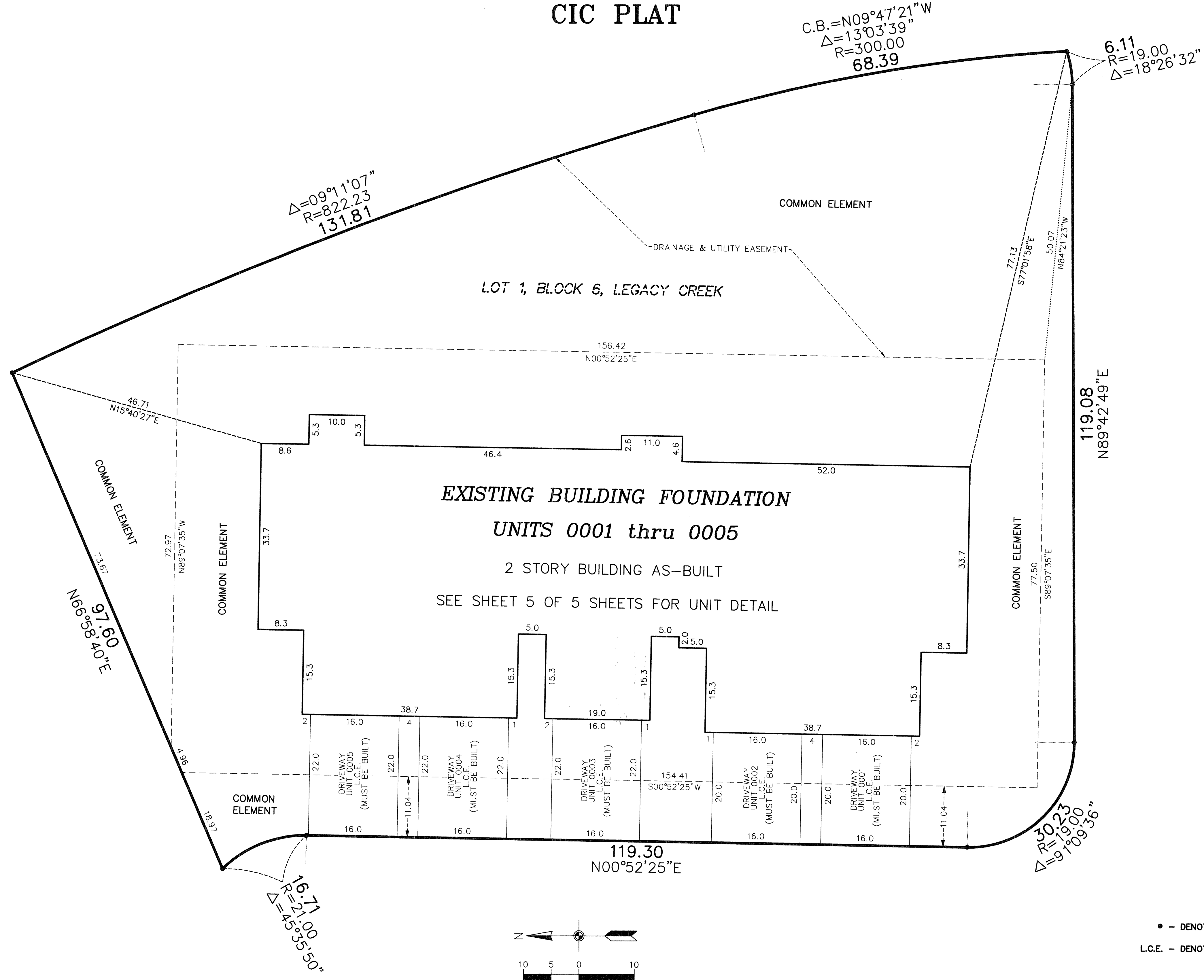
FOR THE PURPOSES OF THIS CIC PLAT, THE SOUTH LINE OF OUTLOT F, LEGACY CREEK, IS ASSUMED TO BEAR N89°07'35"W.



CIC NUMBER 276 A CONDOMINIUM LEGACY CREEK THIRD SUPPLEMENTAL CIC PLAT

C.R. DOC. NO. 2033010.002

BK 11 ABST CITY OF BLAINE
PAGE 15 COUNTY OF ANOKA
SEC. 2, T. 31, R. 23

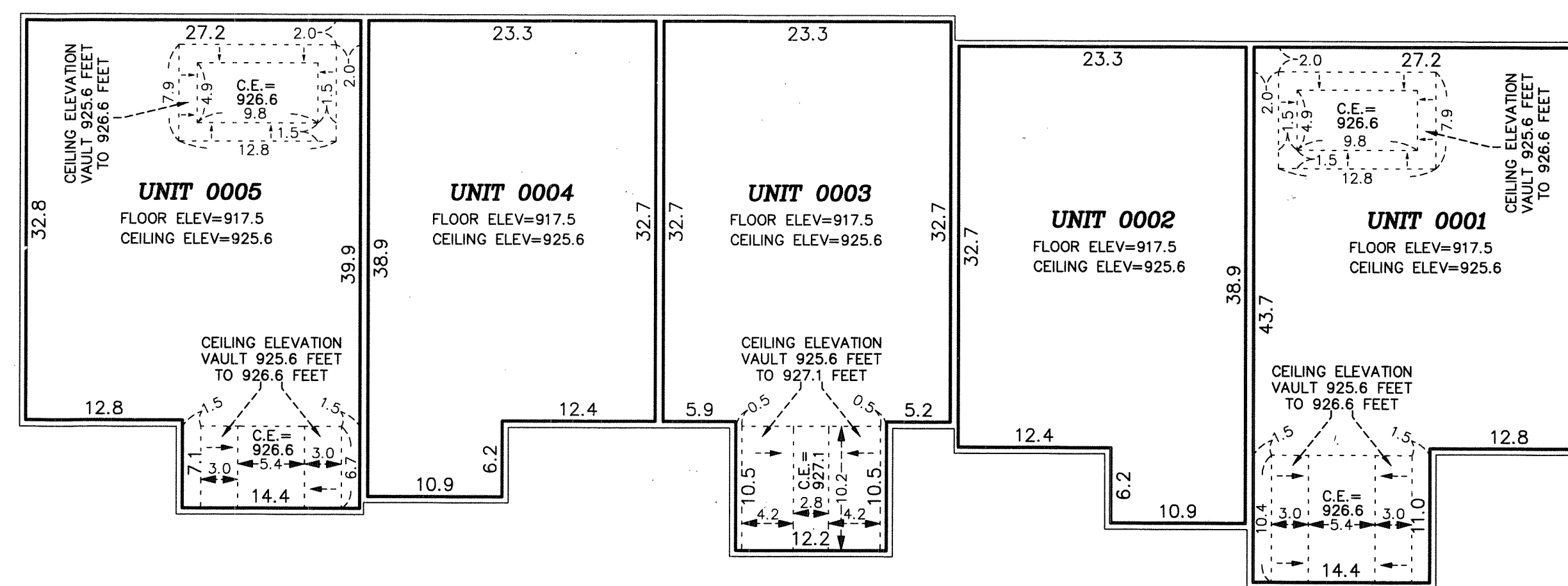
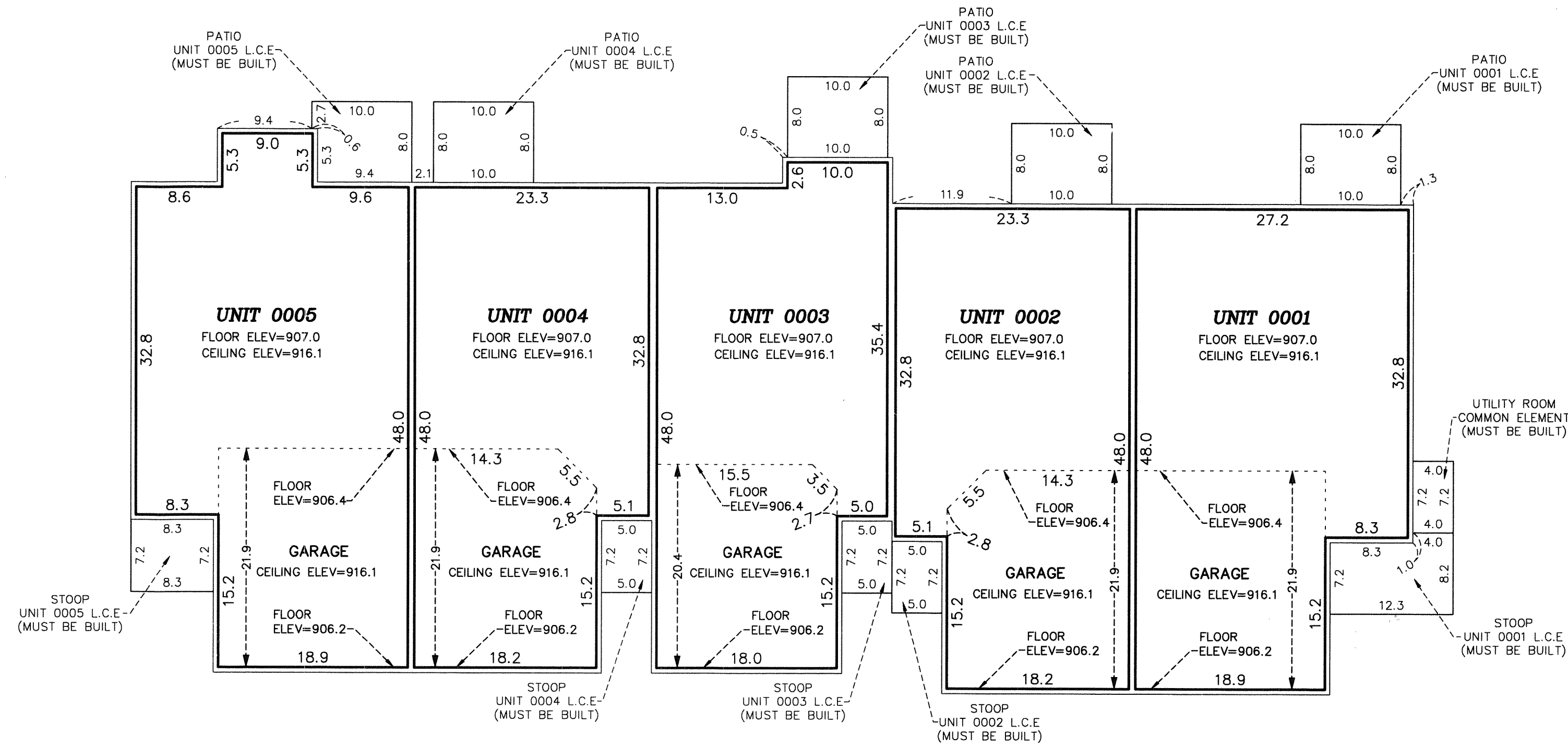


UNIT DETAIL
(AS-BUILT)

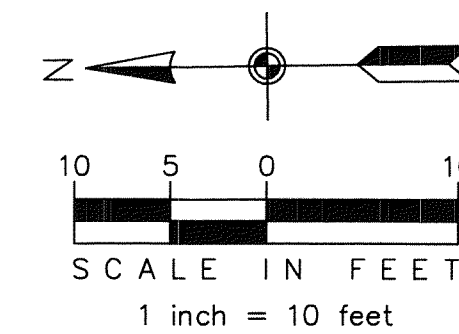
CIC NUMBER 276 A CONDOMINIUM LEGACY CREEK THIRD SUPPLEMENTAL CIC PLAT

C.R. DOC. NO. 2033010.002

BK 11 ABST CITY OF BLAINE
PAGE 15 COUNTY OF ANOKA
SEC. 2, T. 31, R. 23



ELEV - DENOTES ELEVATION
L.C.E. - DENOTES LIMITED COMMON ELEMENT



INTERIOR DIMENSIONS SHOWN ARE MEASURED TO THE UNFINISHED SURFACE OF THE WALLS, FLOORS AND CEILING.
ELEVATIONS ARE REFERENCED TO A BENCHMARK AS NOTED ON THE SITE PLAN ON SHEET 2 OF 5 SHEETS AND ARE SHOWN IN FEET AND TENTHS OF A FOOT.