

CIC NUMBER 281 A CONDOMINIUM WINCHESTER PLACE FIRST SUPPLEMENTAL CIC PLAT

BL 10 of CIC #35

This FIRST SUPPLEMENTAL CIC plat is part of the FIRST SUPPLEMENTAL to the Declaration recorded as Document No. 495 PD 002 on this 18th day of August, 2008

City of Blaine
County of Anoka
Section 17, Township 31, Range 23

SITE PLAN

I, John C. Larson, hereby certify that the work was undertaken by or reviewed and approved by me for this FIRST SUPPLEMENTAL CIC Plat of CIC NUMBER 281, A CONDOMINIUM, WINCHESTER PLACE, being located upon:

Lot 8, Block 1, CLUB WEST FOURTEENTH ADDITION, Anoka County, Minnesota,

and the additional real estate is located upon the following described property designated as:

Lots 1 through 5, inclusive, Block 1, Lot 7, Block 1; and Outlot A; CLUB WEST FOURTEENTH ADDITION, Anoka County, Minnesota

and that this CIC plat fully and accurately depicts all information required by Minnesota Statutes, Section 515B.2-110.

Dated this 7th day of July, 2008.

John C. Larson
John C. Larson, Professional Land Surveyor
Minnesota License No. 19828

STATE OF MINNESOTA
COUNTY OF DAKOTA

The foregoing certificate was acknowledged before me this 7th day of July, 2008, by John C. Larson, a Licensed Professional Land Surveyor.

Nicholas J. Kalsrud
Nicholas J. Kalsrud
Notary Public, Dakota County, Minnesota
My Commission Expires January 31, 2010

I, John M. Molinaro pursuant to Minnesota Statutes, Section 515B.2-101(c), do hereby certify that the units and the structural components of the structures containing the units and the mechanical systems serving more than one unit are substantially completed.

Dated this 7th day of July, 2008.

John M. Molinaro
John M. Molinaro, Licensed Professional Engineer
Minnesota License No. 45831

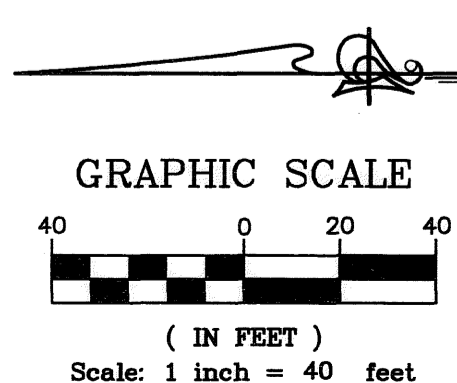
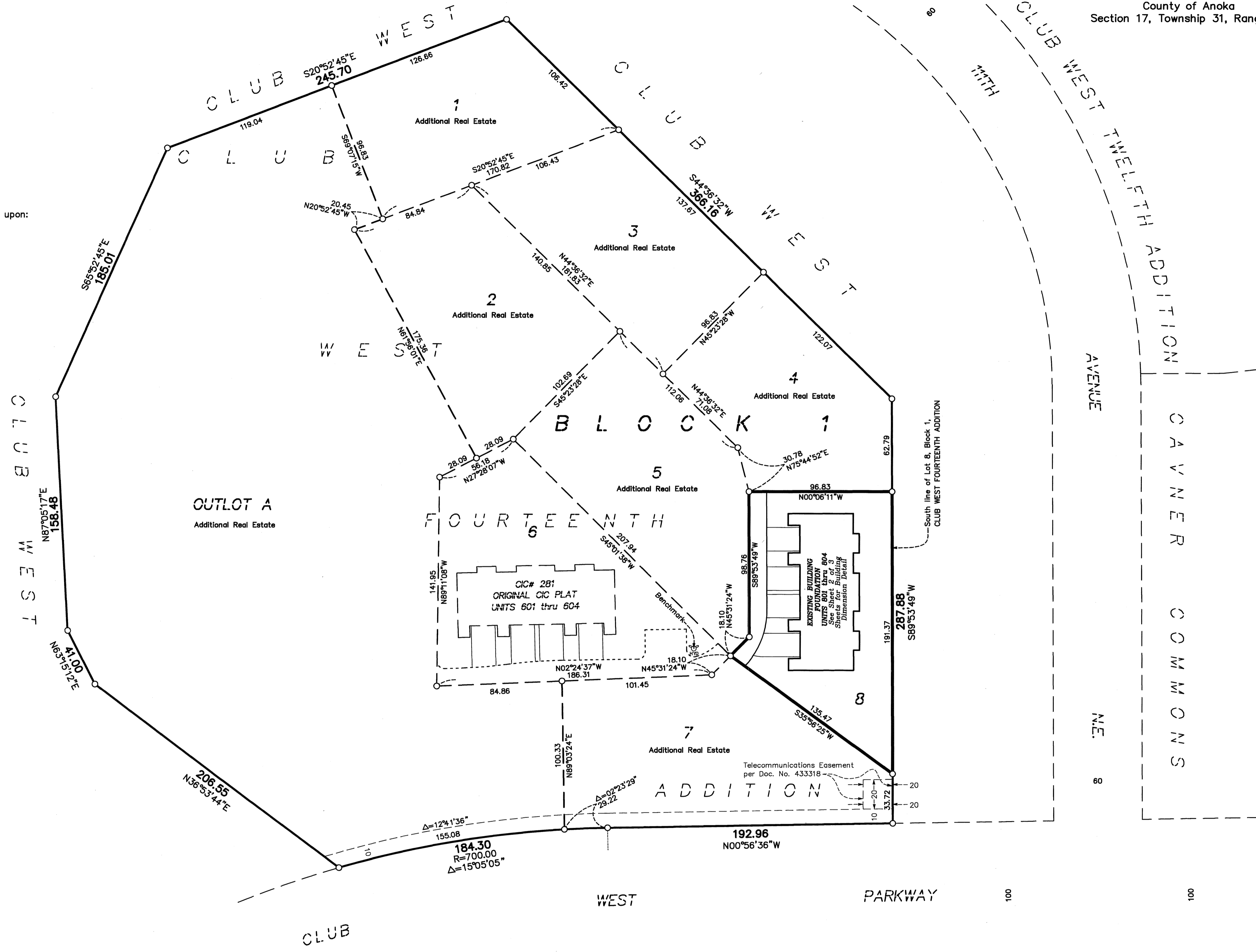
STATE OF MINNESOTA
COUNTY OF DAKOTA

The foregoing certificate was acknowledged before me this 7th day of July, 2008, by John M. Molinaro, a Licensed Professional Engineer.

Nicholas J. Kalsrud
Nicholas J. Kalsrud
Notary Public, Dakota County, Minnesota
My Commission Expires January 31, 2010

Checked and approved this 22nd day of July, 2008.

Larry D. Hoium
Larry D. Hoium, Anoka County Surveyor
by *Charles F. Ruten*, Deputy



495790.002
Office of REGISTRAR OF TITLES
STATE OF MINNESOTA
COUNTY OF ANOKA
I hereby certify that the within instrument was filed in this office on 8-1-08 at 4:30 o'clock P.M.
By Maureen J. Devine
Maureen J. Devine, Register of Titles

DRAINAGE AND UTILITY EASEMENTS ARE SHOWN THUS: (NOT TO SCALE)
being 10 feet in width and adjoining right-of-way lines unless otherwise shown on this plat.

I HEREBY CERTIFY THAT THE CURRENT AND DELINQUENT TAXES ON THE LANDS DESCRIBED WITHIN ARE PAID AND THE TRANSFER IS ENTERED August 1, 2008
MAUREEN J. DEVINE
PROPERTY TAX ADMINISTRATOR
BY [Signature]
DEPUTY PROPERTY TAX ADMINISTRATOR

BENCH MARK
Top nut hydrant, Southwest corner of Lot 6, Block 1, CLUB WEST FOURTEENTH ADDITION.
Elevation= 899.07 Feet (NGVD 1929)

Denotes 1/2 inch by 14 inch iron monument set and marked with license number 20595
For the purposes of this plat, the South line of Lot 8, Block 1, CLUB WEST FOURTEENTH ADDITION is assumed to bear South 89 degrees 53 minutes 49 seconds West.

ROSELAND INDUSTRIAL PARK
PIONEER Engineering
CIVIL ENGINEERS LAND PLANNERS LAND SURVEYORS LANDSCAPE ARCHITECTS

BK10 of CIC pg 35

C.R. DOC. NO. 495 790.002

City of Blaine
County of Anoka
Section 17, Township 31, Range 23

UNIT DETAIL
(AS-BUILT)

CIC NUMBER 281

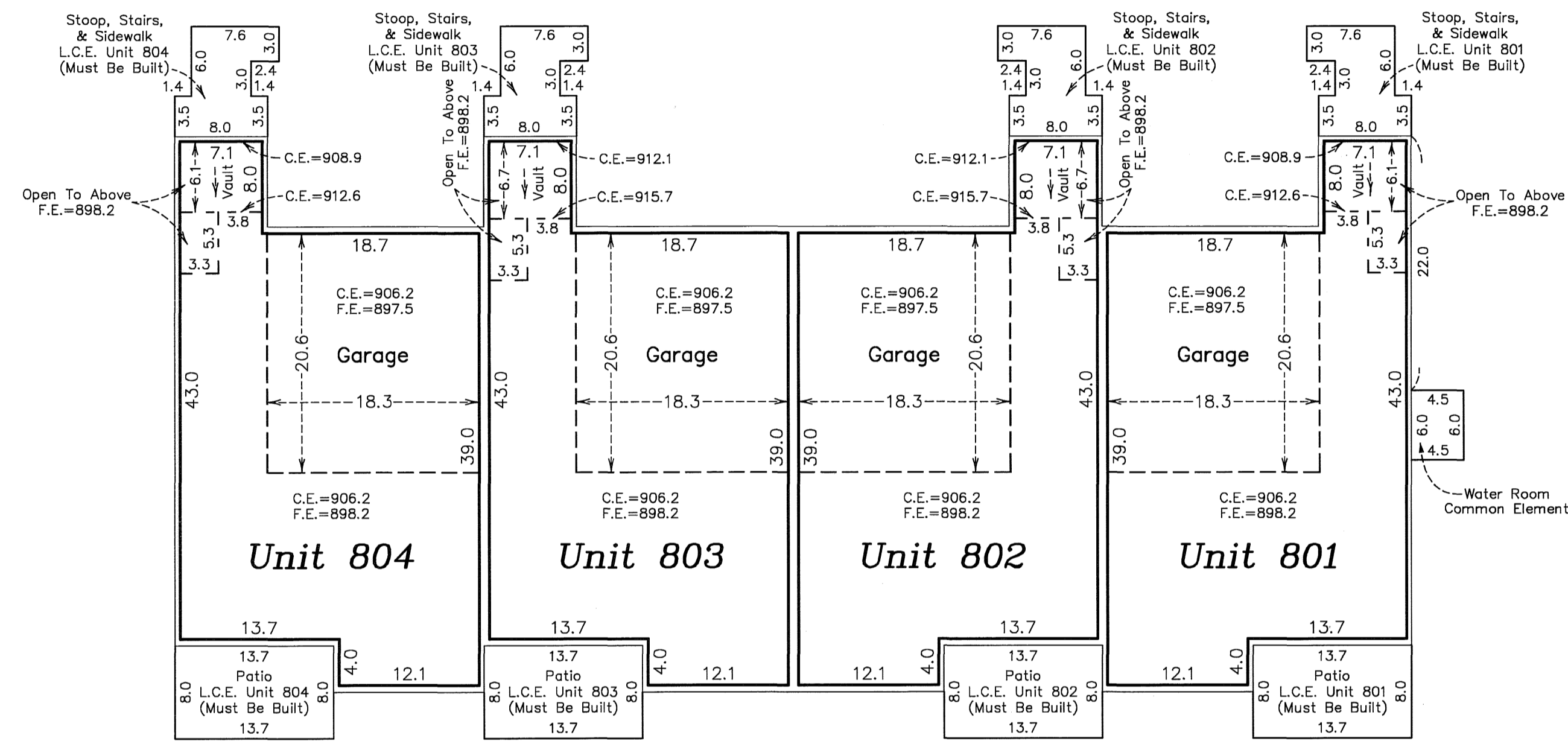
A CONDOMINIUM

WINCHESTER PLACE

FIRST SUPPLEMENTAL

CIC PLAT

LOWER LEVEL



Elevations are referenced to a benchmark as noted on the site plan on Sheet 1 of 3 Sheets and are shown in feet and tenths of a foot.

F.E. = Floor elevation
C.E. = Ceiling elevation
L.C.E. = Limited Common Element

Interior dimensions shown are measured to the unfinished surface of the walls, floors and ceiling.

UPPER LEVEL

