

CIC NUMBER 281 A CONDOMINIUM WINCHESTER PLACE SECOND SUPPLEMENTAL CIC PLAT

BK-10 of CIC pg 37

This SECOND SUPPLEMENTAL CIC plat is part of the SECOND SUPPLEMENTAL to the Declaration recorded as Document

No. 496681.002 on this 17th day of November, 2008

City of Blaine
County of Anoka
Section 17, Township 31, Range 23

SITE PLAN

I, John C. Larson, hereby certify that the work was undertaken by or reviewed and approved by me for this SECOND SUPPLEMENTAL CIC Plat of CIC NUMBER 281, A CONDOMINIUM, WINCHESTER PLACE, being located upon:

Lot 4, Block 1, CLUB WEST FOURTEENTH ADDITION, Anoka County, Minnesota,

and the additional real estate is located upon the following described property designated as:

Lots 1 through 3, inclusive, Block 1, Lots 5 and 7, Block 1; and Outlot A; CLUB WEST FOURTEENTH ADDITION, Anoka County, Minnesota

and that this CIC plat fully and accurately depicts all information required by Minnesota Statutes, Section 515B.2-110.

Dated this 27th day of October, 2008.

John C. Larson
John C. Larson, Professional Land Surveyor
Minnesota License No. 19828

STATE OF MINNESOTA
COUNTY OF DAKOTA

The foregoing certificate was acknowledged before me this 27th day of October, 2008, by John C. Larson, a Professional Land Surveyor.

Nicholas J. Kalsrud
Notary Public, Dakota County, Minnesota
My Commission Expires January 31, 2010

I, John M. Molinaro pursuant to Minnesota Statutes, Section 515B.2-101(c), do hereby certify that the units and the structural components of the structures containing the units and the mechanical systems serving more than one unit are substantially completed.

Dated this 27th day of October, 2008.

John M. Molinaro
Licensed Professional Engineer
Minnesota License No. 45831

STATE OF MINNESOTA
COUNTY OF DAKOTA

The foregoing certificate was acknowledged before me this 27th day of October, 2008, by John M. Molinaro, a Licensed Professional Engineer.

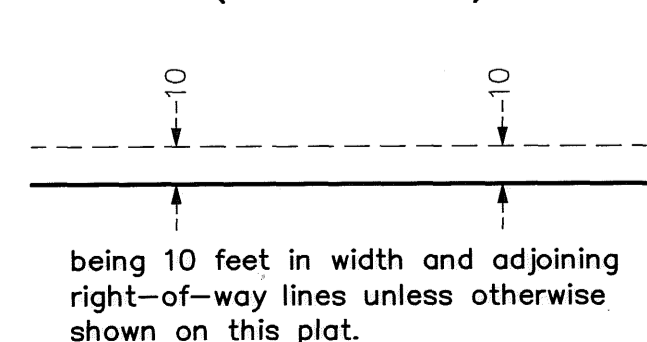
Nicholas J. Kalsrud
Notary Public, Dakota County, Minnesota
My Commission Expires January 31, 2010

Checked and approved this 30th day of October, 2008.

Larry D. Hoium
Larry D. Hoium, Anoka County Surveyor
by Charles F. Kutzner, Deputy

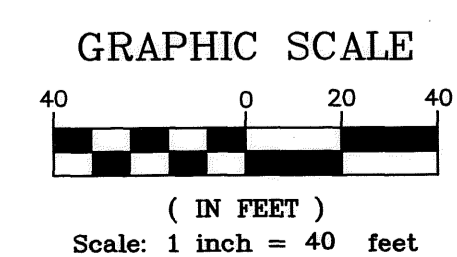
496681.002
OFFICE OF REGISTRAR OF TITLES
STATE OF MINNESOTA
COUNTY OF ANOKA
I hereby certify that the within instrument was filed in this office on 11-17-08 at 3:09 o'clock P.M.
By GKE Deputy Registrar of Titles

DRAINAGE AND UTILITY EASEMENTS ARE SHOWN THUS:
(NOT TO SCALE)

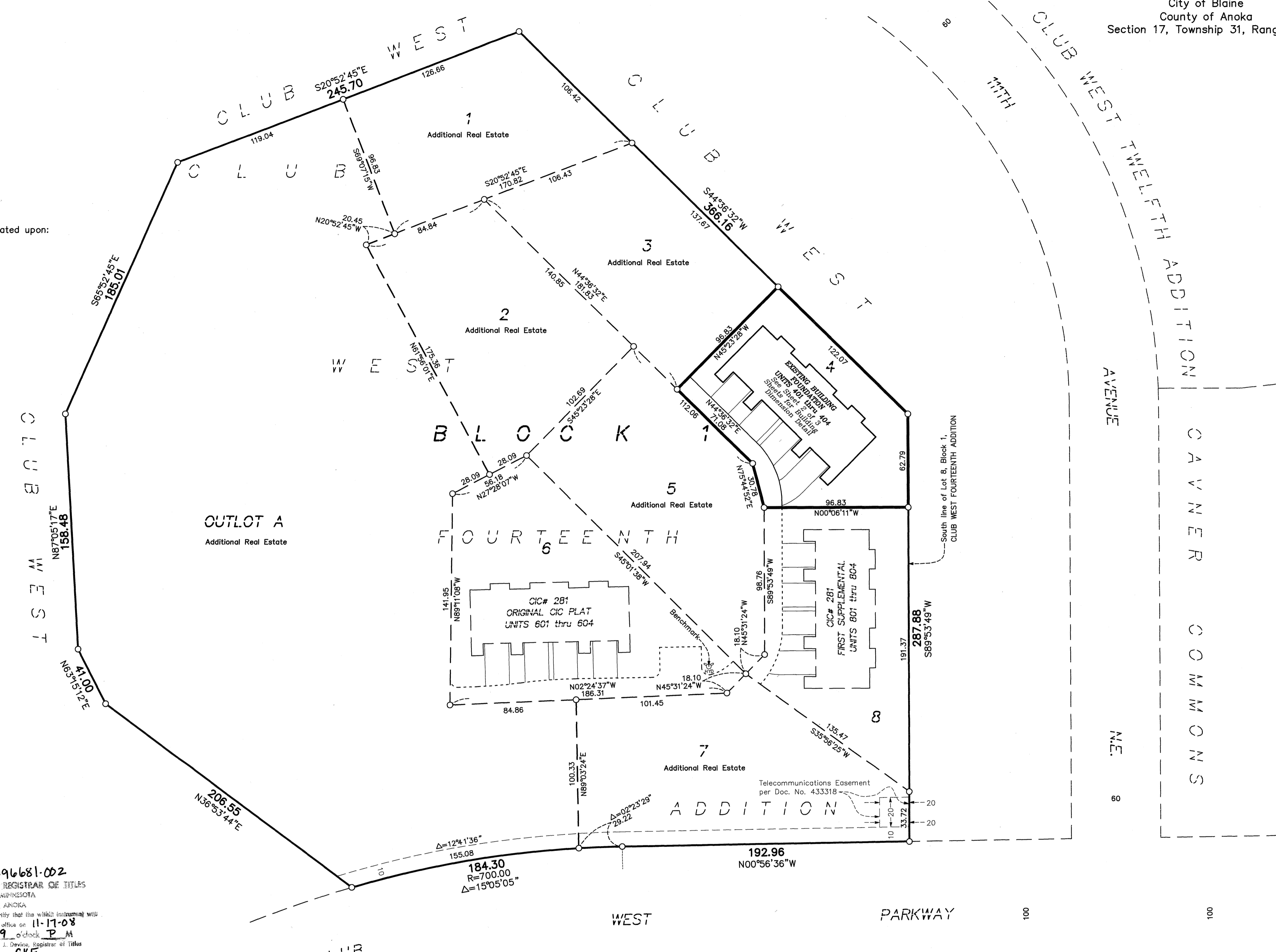


I HEREBY CERTIFY THAT THE CURRENT AND DELINQUENT TAXES ON THE LANDS DESCRIBED WITHIN ARE PAID AND THE TRANSFER IS ENTERED Nov 17, 2008
MAUREEN J. DEVINE
PROPERTY TAX ADMINISTRATOR
By GKE
DEPUTY PROPERTY TAX ADMINISTRATOR

BENCH MARK
Top nut hydrant, Southwest corner of Lot 6, Block 1, CLUB WEST FOURTEENTH ADDITION.
Elevation = 899.07 Feet (NGVD 1929)



○ Denotes 1/2 inch by 14 inch iron monument set and marked with license number 20595
For the purposes of this plat, the South line of Lot 8, Block 1, CLUB WEST FOURTEENTH ADDITION is assumed to bear South 89 degrees 53 minutes 49 seconds West.



ROSELAND INDUSTRIAL PARK
PIONEER Engineering
CIVIL ENGINEERS LAND PLANNERS LAND SURVEYORS LANDSCAPE ARCHITECTS

BUILDING DIMENSION DETAIL
AS-BUILT

CIC NUMBER 281

A CONDOMINIUM

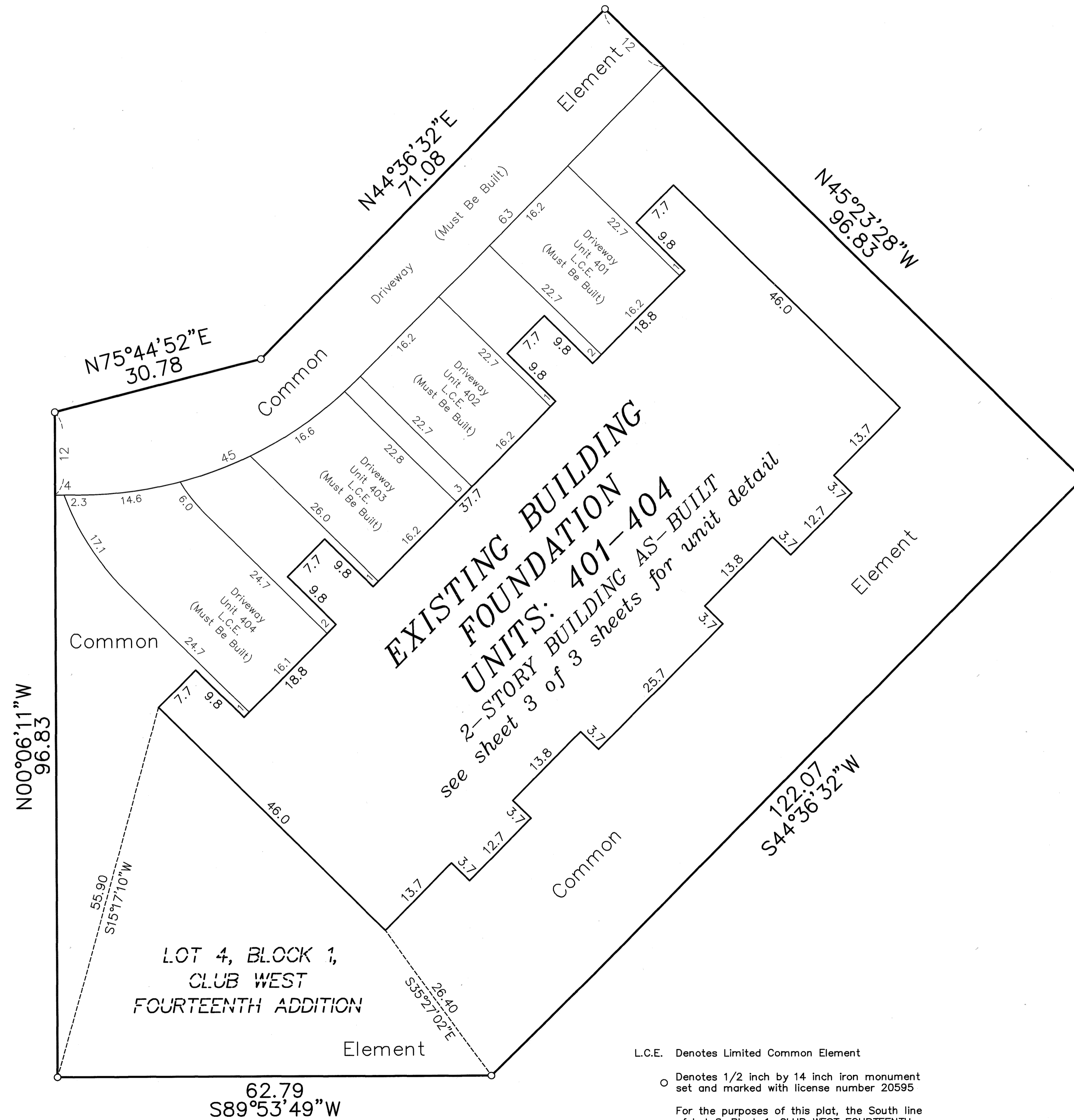
WINCHESTER PLACE

SECOND SUPPLEMENTAL

CIC PLAT

C.R. DOC. NO. 496681.002

City of Blaine
County of Anoka
Section 17, Township 31, Range 23



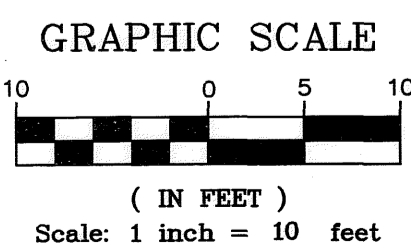
**EXISTING BUILDING
FOUNDATION
UNITS: 401-404**
2-STORY BUILDING AS-BUILT
see sheet 3 of 3 sheets for unit detail

LOT 4, BLOCK 1,
CLUB WEST
FOURTEENTH ADDITION

L.C.E. Denotes Limited Common Element

○ Denotes 1/2 inch by 14 inch iron monument set and marked with license number 20595

For the purposes of this plat, the South line of Lot 8, Block 1, CLUB WEST FOURTEENTH ADDITION is assumed to bear South 89 degrees 53 minutes 49 seconds West.



UNIT DETAIL
(AS-BUILT)

CIC NUMBER 281

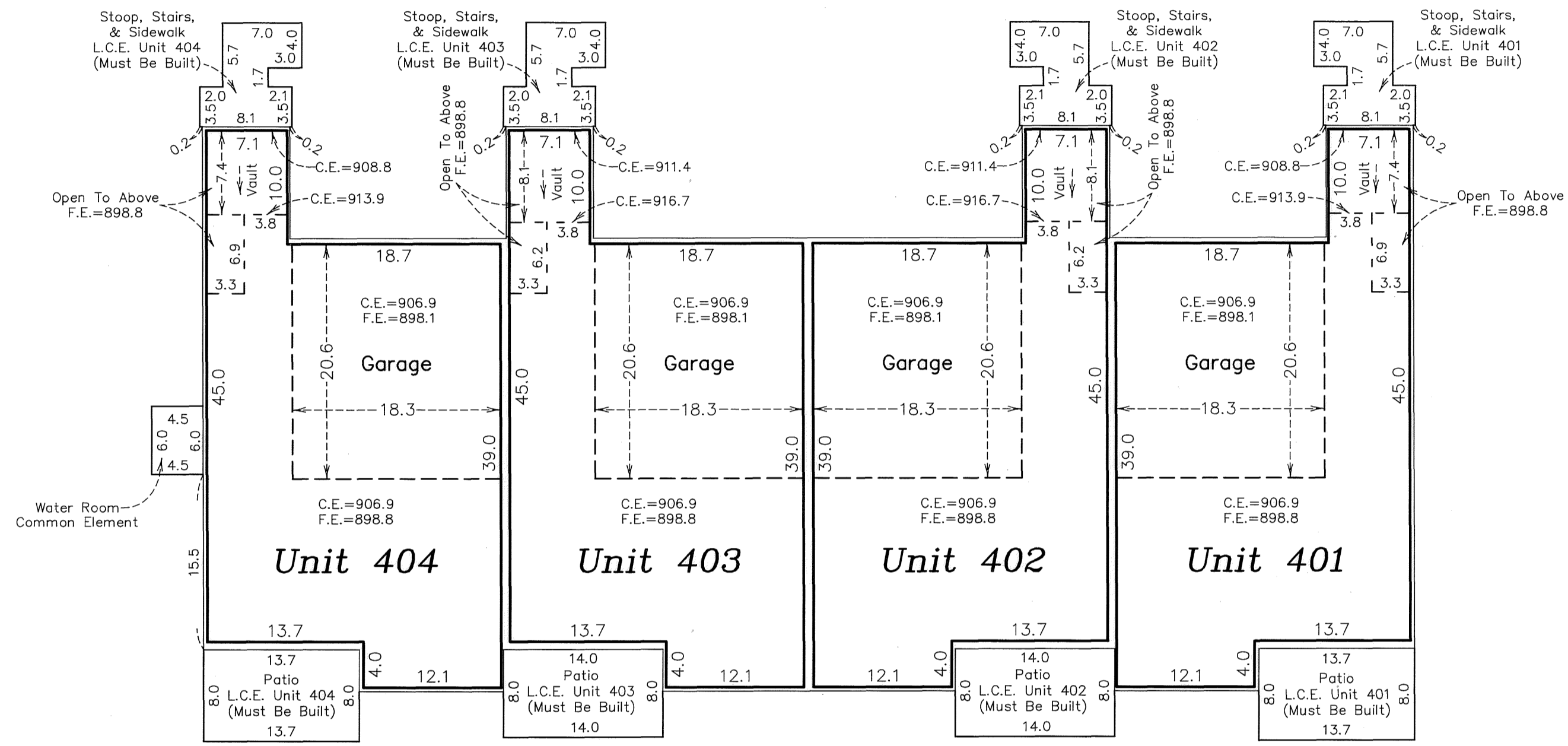
A CONDOMINIUM

WINCHESTER PLACE

SECOND SUPPLEMENTAL

CIC PLAT

LOWER LEVEL



Elevations are referenced to a benchmark as noted on the site plan on Sheet 1 of 3 Sheets and are shown in feet and tenths of a foot.

F.E. = Floor elevation
C.E. = Ceiling elevation
L.C.E. = Limited Common Element

Interior dimensions shown are measured to the unfinished surface of the walls, floors and ceiling.

UPPER LEVEL

