

# CIC NUMBER 281 A CONDOMINIUM WINCHESTER PLACE SIXTH SUPPLEMENTAL CIC PLAT

This SIXTH SUPPLEMENTAL CIC plat is part of the SIXTH SUPPLEMENTAL to the Declaration recorded as Document No. 500838.002 on this 3rd day of March, 2010.

City of Blaine  
County of Anoka  
Section 17, Township 31, Range 23  
Book 11 CIC Page 2

### SITE PLAN

I, John C. Larson, hereby certify that the work was undertaken by or reviewed and approved by me for this SIXTH SUPPLEMENTAL CIC Plat of CIC NUMBER 281, A CONDOMINIUM, WINCHESTER PLACE, being located upon:

Lot 3, Block 1, CLUB WEST FOURTEENTH ADDITION, Anoka County, Minnesota,

and the additional real estate is located upon the following described property designated as:

Lots 2, Block 1 and Outlot A; CLUB WEST FOURTEENTH ADDITION, Anoka County, Minnesota

and that this CIC plat fully and accurately depicts all information required by Minnesota Statutes, Section 515B.2-110.

Dated this 3<sup>rd</sup> day of February, 2010.

John C. Larson  
John C. Larson, Professional Land Surveyor  
Minnesota License No. 19828

STATE OF MINNESOTA  
COUNTY OF DAKOTA

The foregoing certificate was acknowledged before me this 3<sup>rd</sup> day of February, 2010, by John C. Larson, a Professional Land Surveyor.

Nicholas J. Kolsrud  
Nicholas J. Kolsrud  
Notary Public, Dakota County, Minnesota  
My Commission Expires January 31, 2015

I, Paul J. Cherna pursuant to Minnesota Statutes, Section 515B.2-101(c), do hereby certify that the units and the structural components of the structures containing the units and the mechanical systems serving more than one unit are substantially completed.

Dated this 3<sup>rd</sup> day of February, 2010.

Paul J. Cherna  
Licensed Professional Engineer  
Minnesota License No. 19860

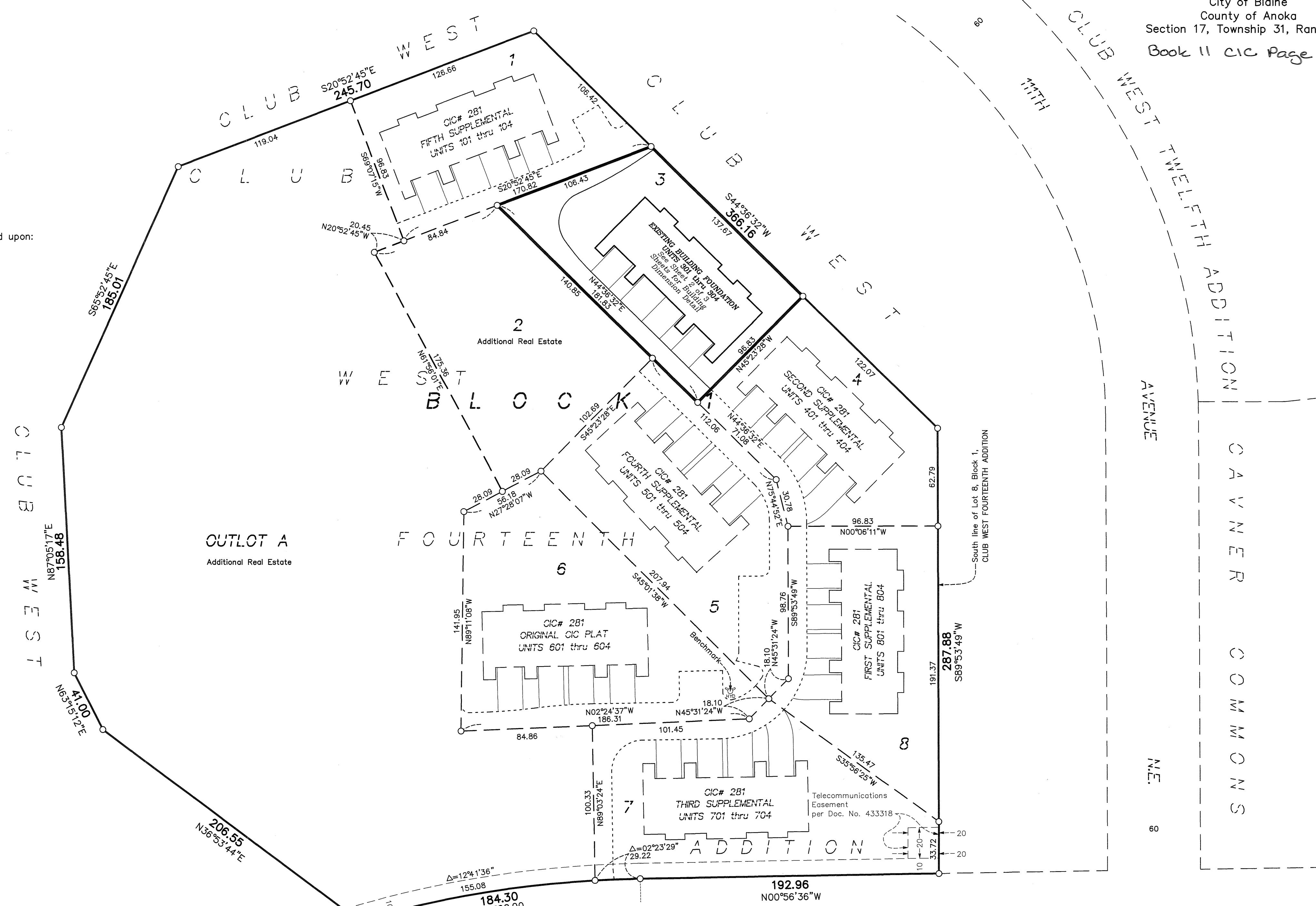
STATE OF MINNESOTA  
COUNTY OF DAKOTA

The foregoing certificate was acknowledged before me this 3<sup>rd</sup> day of February, 2010, by Paul J. Cherna, a Licensed Professional Engineer.

Nicholas J. Kolsrud  
Nicholas J. Kolsrud  
Notary Public, Dakota County, Minnesota  
My Commission Expires January 31, 2015

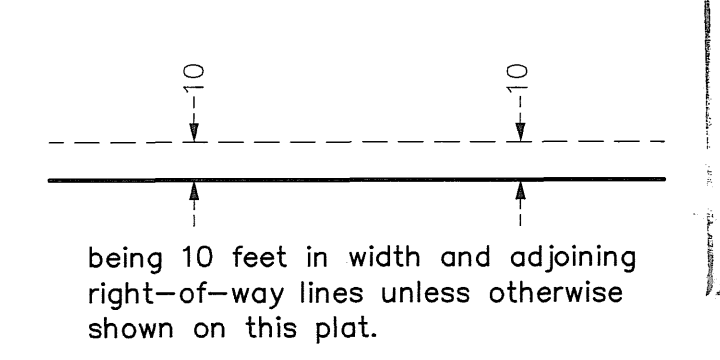
Checked and approved this 23<sup>rd</sup> day of February, 2010.

Larry D. Hoium  
Larry D. Hoium, Anoka County Surveyor  
by Charles F. Kitzner, Deputy



500838.002  
Office of REGISTER OF TITLES  
STATE OF MINNESOTA  
COUNTY OF ANOKA  
I hereby certify that the within instrument was filed in this office on 3-3-10 at 8:31 o'clock A.M.  
MAUREEN J. DEVINE, Register of Titles  
JMD, Deputy Register of Titles

DRAINAGE AND UTILITY EASEMENTS ARE SHOWN THUS:  
(NOT TO SCALE)

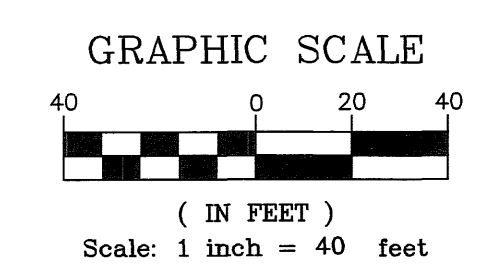


I HEREBY CERTIFY THAT THE CURRENT AND DELINQUENT TAXES ON THE LANDS DESCRIBED WITHIN ARE PAID AND THE TRANSFER IS ENTERED  
March 3, 2010  
MAUREEN J. DEVINE  
PROPERTY TAX ADMINISTRATOR  
BY [Signature]  
PROPERTY TAX ADMINISTRATOR

BENCH MARK  
Top nut hydrant, Southwest corner of Lot 6, Block 1, CLUB WEST FOURTEENTH ADDITION.  
Elevation= 899.07 Feet (NGVD 1929)

Denotes 1/2 inch by 14 inch iron monument set and marked with license number 20595

For the purposes of this plat, the South line of Lot 8, Block 1, CLUB WEST FOURTEENTH ADDITION is assumed to bear South 89 degrees 53 minutes 49 seconds West.



\$ 56.00

BUILDING DIMENSION DETAIL  
AS-BUILT

# CIC NUMBER 281

A CONDOMINIUM  
WINCHESTER PLACE  
SIXTH SUPPLEMENTAL  
CIC PLAT

C.R. DOC. NO. \_\_\_\_\_

City of Blaine  
County of Anoka  
Section 17, Township 31, Range 23

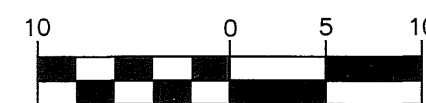
L.C.E. Denotes Limited Common Element

○ Denotes 1/2 inch by 14 inch iron monument set and marked with license number 20595

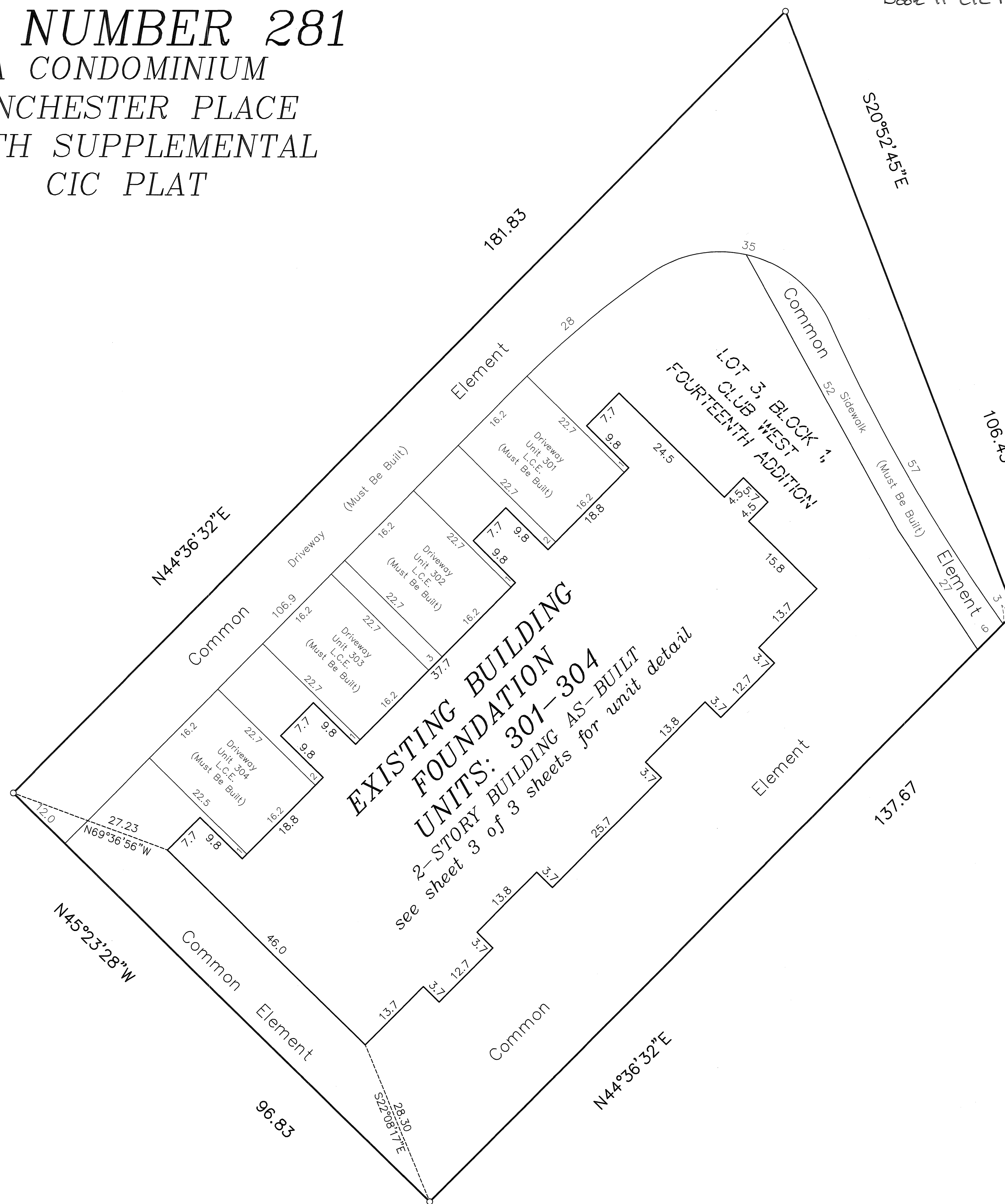
For the purposes of this plat, the South line of Lot 8, Block 1, CLUB WEST FOURTEENTH ADDITION is assumed to bear South 89 degrees 53 minutes 49 seconds West.



GRAPHIC SCALE



( IN FEET )  
Scale: 1 inch = 10 feet



UNIT DETAIL  
(AS-BUILT)

# CIC NUMBER 281

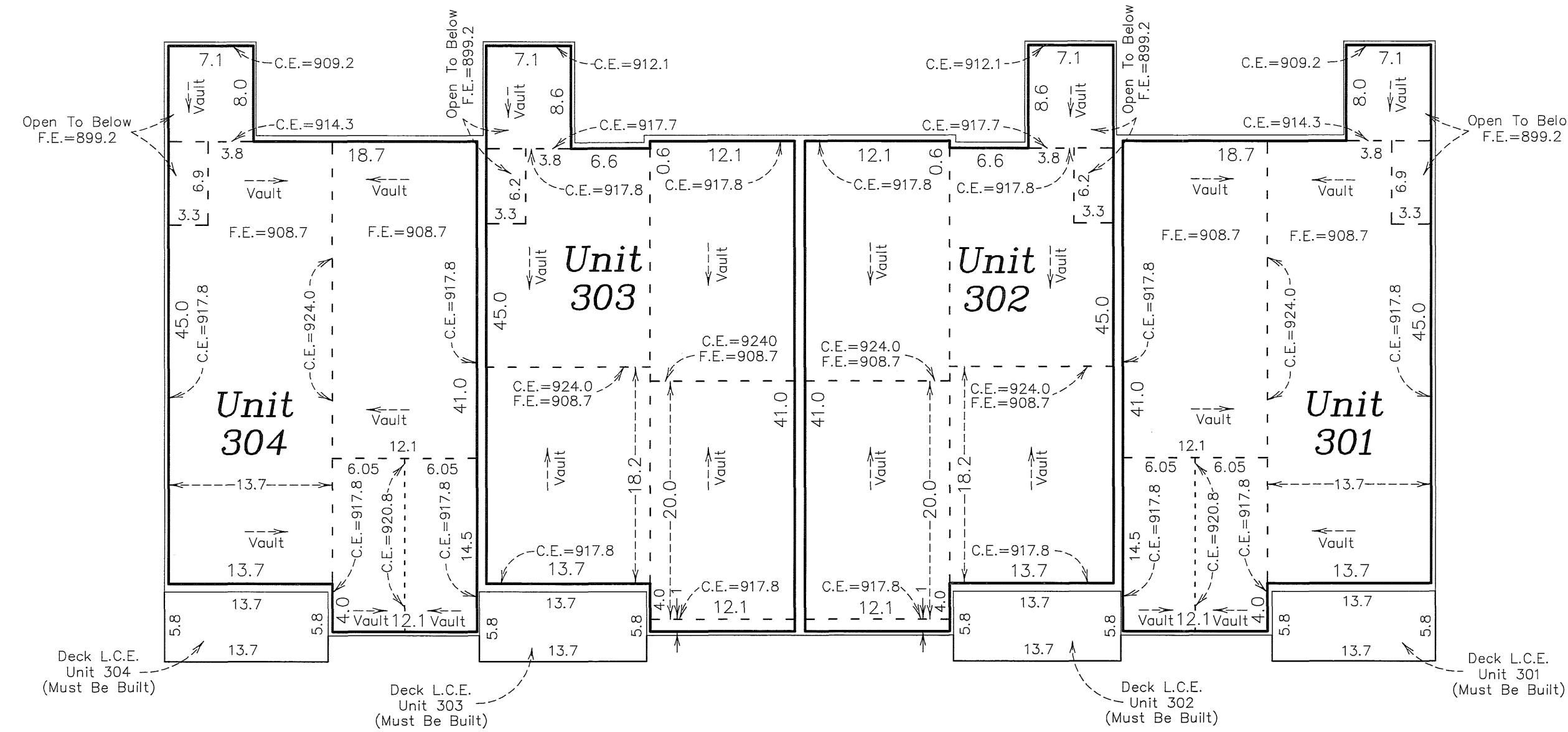
## A CONDOMINIUM

### WINCHESTER PLACE

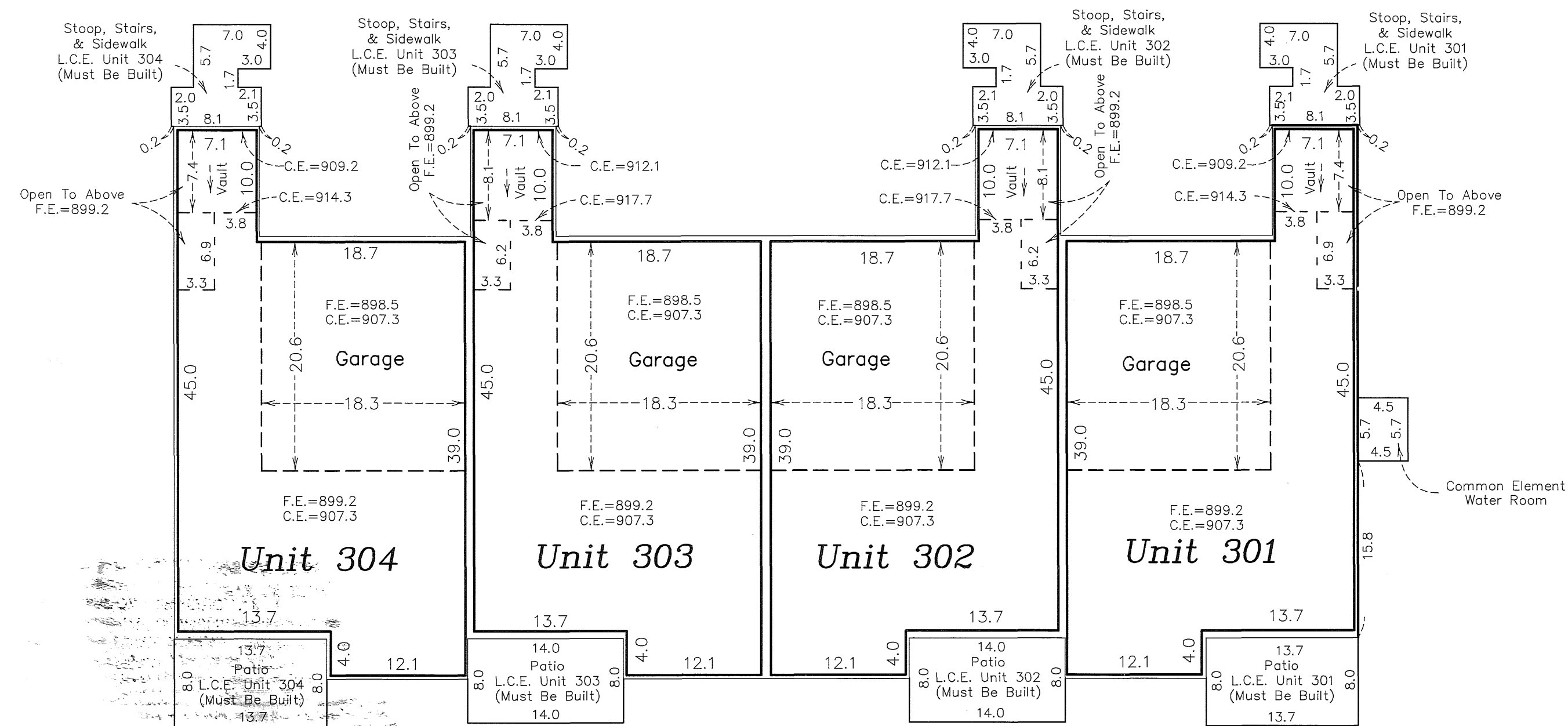
### SIXTH SUPPLEMENTAL

### CIC PLAT

#### UPPER LEVEL



#### LOWER LEVEL



Elevations are referenced to a benchmark as noted on the site plan on Sheet 1 of 3 Sheets and are shown in feet and tenths of a foot.

F.E. = Floor elevation  
C.E. = Ceiling elevation  
L.C.E. = Limited Common Element

Interior dimensions shown are measured to the unfinished surface of the walls, floors and ceiling.

