

CIC NUMBER 286

A CONDOMINIUM

WILLOWSTONE RETAIL CENTER

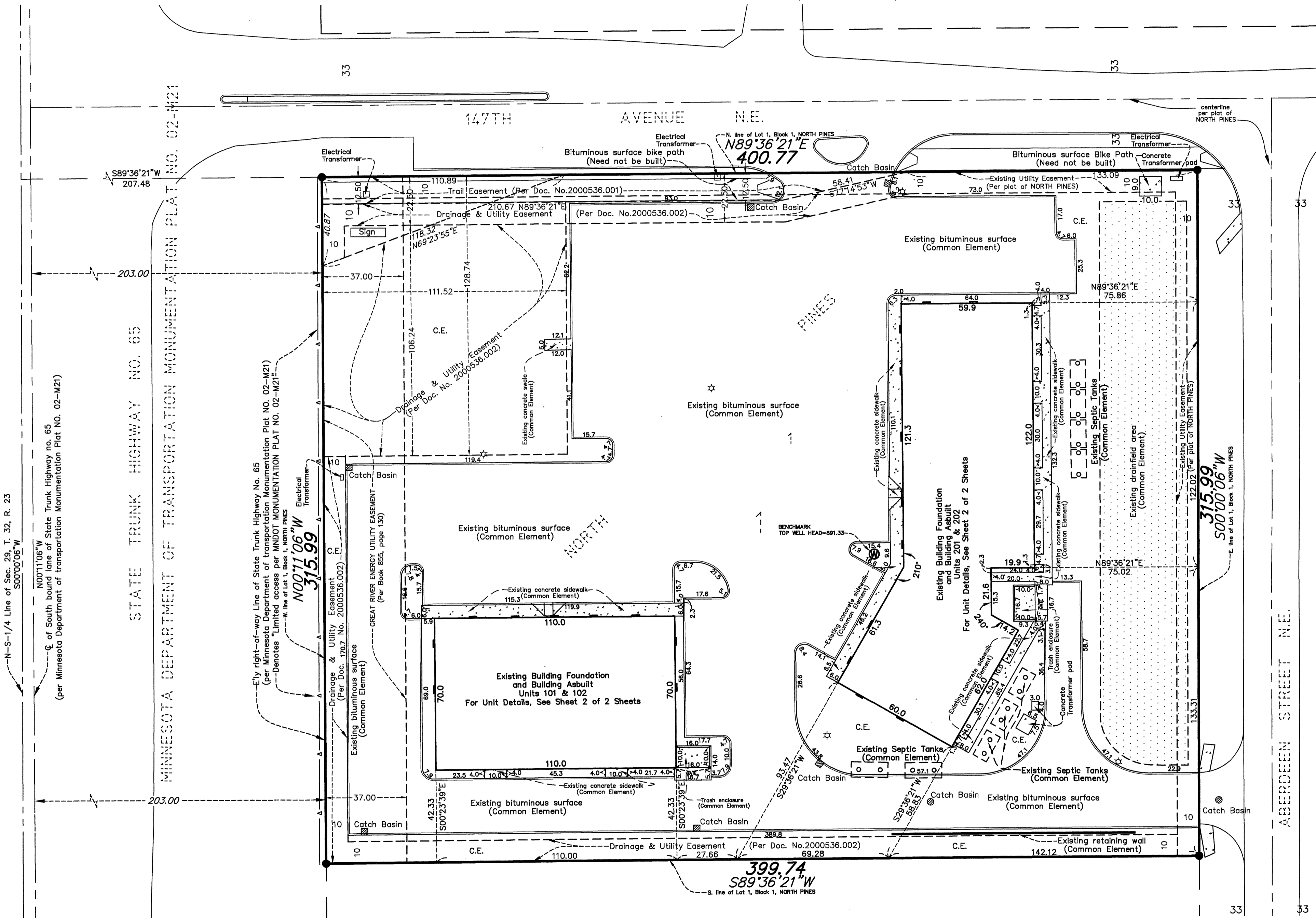
CIC PLAT

BOOK 10 PG 31

This CIC plat has been recorded as part of the declaration filed as document number 2000906.003 on the 29th day of May, 2008

City of Ham Lake
County of Anoka
Sec. 29, T. 32, R. 23

SITE PLAN (As-Built)



I, Lyle C. Reynolds, do hereby certify that the work was undertaken by or reviewed and approved by me for this CIC Plat of CIC NUMBER 286, A CONDOMINIUM, WILLOWSTONE RETAIL CENTER, being located upon: Lot 1, Block 1, NORTH PINES, according to the recorded plat thereof, Anoka County, Minnesota. Fully and accurately depicts all information required by Minnesota Statutes, Section 515B.2-110.

Dated this 16th day of May, 2008
Lyle C. Reynolds
Lyle C. Reynolds, Land Surveyor
Minnesota License No. 25072

STATE OF MINNESOTA
COUNTY OF Anoka
The foregoing instrument was acknowledged before me this 16th day of May, 2008, by Lyle C. Reynolds, a Licensed Land Surveyor.

JILL M. KENT
NOTARY PUBLIC - MINNESOTA
My Commission Expires Jan 31, 2010

Jill M. Kent
Notary Public, Anoka County, Minnesota
My Commission Expires 01-31-10

I, Leon P. Opatz, Pursuant to Minnesota Statutes, Section 515B.2-101(c), do hereby certify that all structural components and mechanical systems of all buildings containing or comprising any units thereby created are substantially completed.

Dated this 16th day of May, 2008
Leon P. Opatz
Leon P. Opatz, Registered Engineer
Minnesota License No. 21810

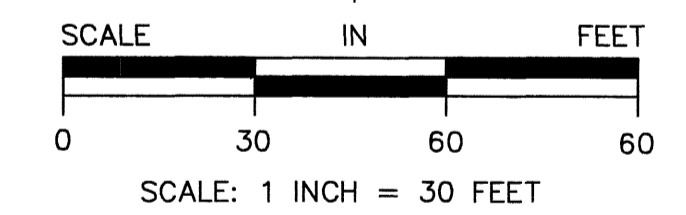
STATE OF MINNESOTA
COUNTY OF Anoka
The foregoing instrument was acknowledged before me this 16th day of May, 2008, by Leon P. Opatz, a Registered Engineer.

JILL M. KENT
NOTARY PUBLIC - MINNESOTA
My Commission Expires Jan 31, 2010

Jill M. Kent
Notary Public, Anoka County, Minnesota
My Commission Expires 01-31-10

Pursuant to Minnesota Statutes, Chapter 389.09, Subd. 2, this CIC Plat has been reviewed and is approved this 29th day of May, 2008.

By: Larry D. Hoium
Anoka County Surveyor
by Charles F. Sutyen, Deputy



BENCH MARK

Top of Well Head on W. side of Easterly Building on Lot 1, Block 1, NORTH PINES.
Elevation = 891.33 feet (N.G.V.D. 1929)

- DENOTES SET IRON PIPE WITH PLASTIC CAP STAMPED 12251
- ☆ DENOTES EXISTING LIGHT POLE
- L.C.E. DENOTES LIMITED COMMON ELEMENT
- C.E. DENOTES COMMON ELEMENT

NOTE: FOR THE PURPOSES OF THIS PLAT, THE NORTH LINE OF LOT 1, BLOCK 1, NORTH PINES, ANOKA COUNTY, MINNESOTA, IS ASSUMED TO BEAR N89°36'21"E.

2000906.003
OFFICE OF COUNTY RECORDER
STATE OF MINNESOTA, COUNTY OF ANOKA
I hereby certify that the within instrument was filed in this office for record on the 29th of May A.D., 2008
at 10 o'clock P.M., and was duly recorded in book 10, page 31
Maureen J. Devine
County Recorder
MJE

I HEREBY CERTIFY THAT THE CURRENT AND DELINQUENT TAXES ON THE LANDS DESCRIBED WITHIN ARE PAID AND THE TRANSFER IS ENTERED
May 29, 2008
MAUREEN J. DEVINE
PROPERTY TAX ADMINISTRATOR
BY S. Culver
DEPUTY PROPERTY TAX ADMINISTRATOR



RLK Incorporated

1321 Andover Blvd. NE Suite 114 Ham Lake, MN 55304
Hibbing, Ham Lake, Mankato, Twin Falls, Oakdale
Phone: (763) 434-7848

