

COMMON INTEREST COMMUNITY NUMBER 306 A CONDOMINIUM TWIN TIDES CIC PLAT

This CIC Plat is part of the Declaration recorded as
Document Number 2046696.002
on this 27 day of December, 2012.

CITY OF BLAINE
COUNTY OF ANOKA
SEC.29, T.31, R.23

SITE PLAN (AS-BUILT)

2046696.002

Office of RECORDER/REGISTRAR
OF TITLES

STATE OF MINNESOTA COUNTY OF ANOKA

I hereby certify that the within instrument was filed in
this office for record on the 27 day of
December 2012 at 12 o'clock P.M.
and was duly recorded in book 11, page 21

Larry W. Davien
Recorder/Registrar of Titles

By Jason E. Rud
Deputy

I, Jason E. Rud, do hereby certify that the work was undertaken by or reviewed and approved by me for this CIC Plat of COMMON INTEREST COMMUNITY NUMBER 306, A CONDOMINIUM, TWIN TIDES, being located upon

Lot 1, Block 1, TWIN TIDES ADDITION, according to the plat on file and of record in the office of the County Recorder, County of Anoka, State of Minnesota.

and that this CIC plat fully and accurately depicts all information required by Minnesota Statutes, Section 515B.2-110, as amended. Dated this 17th day of December, 2012.

Jason E. Rud
Jason E. Rud, Land Surveyor
Minnesota License No. 41578

STATE OF MINNESOTA
COUNTY OF Anoka

The foregoing instrument was acknowledged before me this 17th day of December, 2012, by Jason E. Rud, a Licensed Land Surveyor.

Nicole A. Johnson
Nicole A. Johnson

Notary Public, Anoka County, Minnesota.
My Commission Expires Jan 31, 2015

I, Charles W. Plowe, pursuant to Minnesota Statutes, Section 515B.2-101(c), do hereby certify that the structural components of the structures containing the units and the mechanical systems serving more than one unit, are substantially completed.

Dated this 17th day of DECEMBER, 2012.

Charles W. Plowe

Charles W. Plowe, Licensed Engineer.
Minnesota License No. 18227

STATE OF MINNESOTA
COUNTY OF Anoka

The foregoing instrument was acknowledged before me this 17th day of December, 2012, by Charles W. Plowe, a Licensed Engineer.

Nicole A. Johnson
Nicole A. Johnson

Notary Public, Anoka County, Minnesota.
My Commission Expires Jan 31, 2015

Pursuant to Minnesota Statutes, Chapter 389.09, Subd. 2, this CIC Plat has been reviewed and is approved this 27th day of DECEMBER, 2012.

Larry D. Holm
Larry D. Holm
Anoka County Surveyor

LEGEND:

- DENOTES FOUND 1/2 INCH IRON PIPE
- DENOTES SET 1/2 INCH IRON PIPE MARKED RLS #41578 (UNLESS OTHERWISE NOTED)
- C.E. DENOTES COMMON ELEMENT
- L.C.E. DENOTES LIMITED COMMON ELEMENT

FOR THE PURPOSES OF THIS CIC PLAT THE WEST LINE OF LOT 1, BLOCK 1, TWIN TIDES ADDITION IS ASSUMED TO BEAR SOUTH 00 DEGREES 44 MINUTES 46 SECONDS WEST.

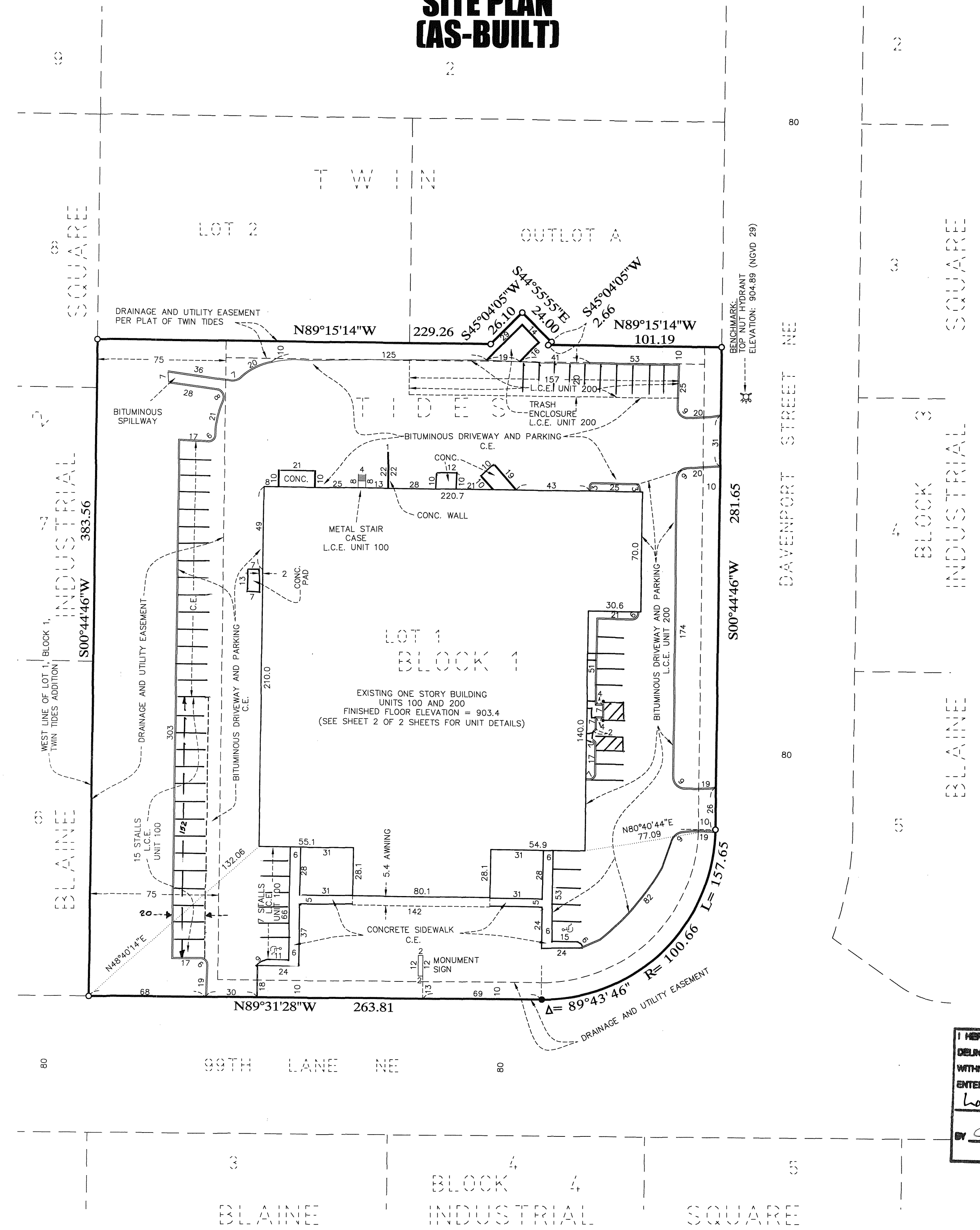
BENCHMARK:
TOP NUT OF HYDRANT LOCATED NEAR THE NORTH PARKING ENTRANCE OF THE SUBJECT PROPERTY (SEE SITE PLAN).
ELEVATION = 904.89 (NGVD 29 DATUM)

NORTH

GRAPHIC SCALE



(SCALE IN FEET)
1 inch = 40 feet



I HEREBY CERTIFY THAT THE CURRENT AND DELINQUENT TAXES ON THE LANDS DESCRIBED WITHIN ARE PAID AND THE TRANSFER IS ENTERED 12-27-12
Larry W. Davien
PROPERTY TAX ADMINISTRATOR
BY Shirley J. White
DEPUTY

COMMON INTEREST COMMUNITY NUMBER 306 A CONDOMINIUM TWIN TIDES CIC PLAT

Bk11 P621

This CIC Plat is part of the Declaration recorded as
Document Number 2046696.002
on this 27 day of December, 2017.

CITY OF BLAINE
COUNTY OF ANOKA
SEC.29, T.31, R.23

UNIT DETAILS (AS-BUILT)

LEGEND:

- C.E. DENOTES COMMON ELEMENT
- L.C.E. DENOTES LIMITED COMMON ELEMENT

ELEVATIONS ARE REFERENCED TO A BENCHMARK SHOWN ON SHEET 1 OF 2 SHEETS AND ARE SHOWN IN TENTHS OF A FOOT.

