

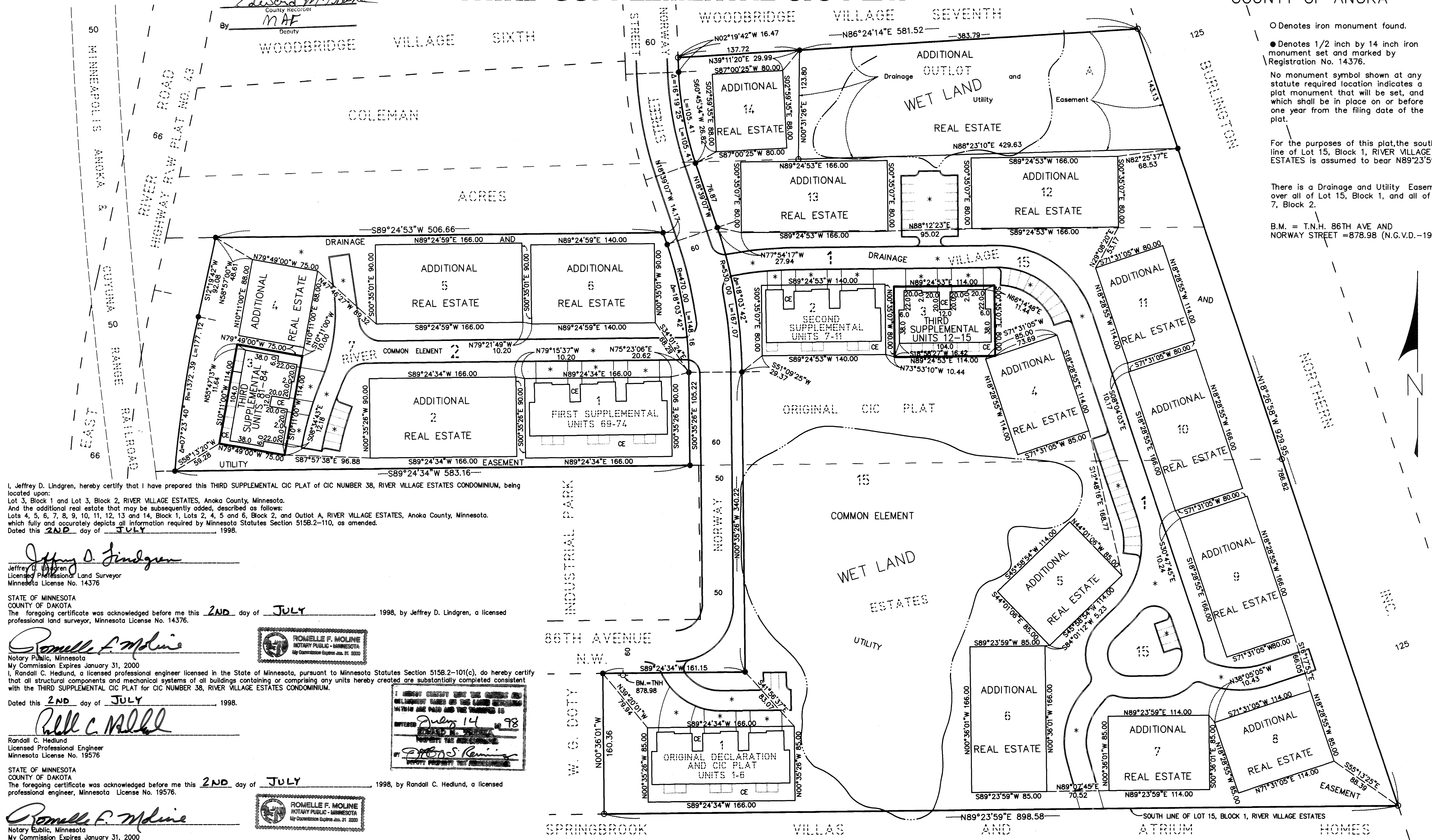
SITE PLAN AS BUILT

1356501
OFFICE OF COUNTY RECORDER
STATE OF MINNESOTA, COUNTY OF ANOKA
I hereby certify that the within instrument was filed in this office for record on the 14th day of July, A.D., 1998 at 2:45 o'clock P.M., and was duly recorded in book 3210, page 34

CIC NUMBER 38 RIVER VILLAGE ESTATES CONDOMINIUM THIRD SUPPLEMENTAL CIC PLAT

This THIRD SUPPLEMENTAL CIC PLAT is part of the declaration recorded as Doc. No. 1356501 on the 14 day of July, 1998

CITY OF COON RAPIDS
COUNTY OF ANOKA



I, Jeffrey D. Lindgren, hereby certify that I have prepared this THIRD SUPPLEMENTAL CIC PLAT of CIC NUMBER 38, RIVER VILLAGE ESTATES CONDOMINIUM, being located upon:
Lot 3, Block 1 and Lot 3, Block 2, RIVER VILLAGE ESTATES, Anoka County, Minnesota.
And the additional real estate that may be subsequently added, described as follows:
Lots 4, 5, 6, 7, 8, 9, 10, 11, 12, 13 and 14, Block 1, Lots 2, 4, 5 and 6, Block 2, and Outlot A, RIVER VILLAGE ESTATES, Anoka County, Minnesota, which fully and accurately depicts all information required by Minnesota Statutes Section 515B.2-110, as amended.
Dated this 2ND day of JULY, 1998.

Jeffrey D. Lindgren
Jeffrey D. Lindgren
Licensed Professional Land Surveyor
Minnesota License No. 14376

STATE OF MINNESOTA
COUNTY OF ANOKA
The foregoing certificate was acknowledged before me this 2ND day of JULY, 1998, by Jeffrey D. Lindgren, a licensed professional land surveyor, Minnesota License No. 14376.

Romelle F. Moline
Romelle F. Moline
Notary Public, Minnesota
My Commission Expires January 31, 2000

I, Randall C. Hedlund, a licensed professional engineer licensed in the State of Minnesota, pursuant to Minnesota Statutes Section 515B.2-101(c), do hereby certify that all structural components and mechanical systems of all buildings containing or comprising any units hereby created are substantially completed consistent with the THIRD SUPPLEMENTAL CIC PLAT for CIC NUMBER 38, RIVER VILLAGE ESTATES CONDOMINIUM.
Dated this 2ND day of JULY, 1998.

Randall C. Hedlund
Randall C. Hedlund
Licensed Professional Engineer
Minnesota License No. 19576

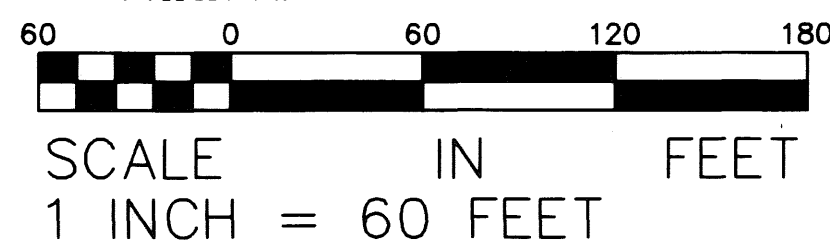
STATE OF MINNESOTA
COUNTY OF ANOKA
The foregoing certificate was acknowledged before me this 2ND day of JULY, 1998, by Randall C. Hedlund, a licensed professional engineer, Minnesota License No. 19576.

Romelle F. Moline
Romelle F. Moline
Notary Public, Minnesota
My Commission Expires January 31, 2000

This CIC plat has been checked and approved this 14th day of JULY, 1998.

Larry D. Hein
Larry D. Hein
Anoka County Surveyor

- DENOTES CONCRETE CURB (MUST BE BUILT).
- * DENOTES BITUMINOUS SURFACE (MUST BE BUILT).
- CE DENOTES COMMON ELEMENT



Receipt # 9807 2893 # 356.50

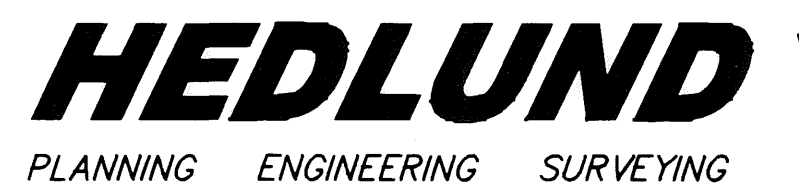
- O Denotes iron monument found.
- Denotes 1/2 inch by 14 inch iron monument set and marked by Registration No. 14376.

No monument symbol shown at any statute required location indicates a plat monument that will be set, and which shall be in place on or before one year from the filing date of the plat.

For the purposes of this plat, the south line of Lot 15, Block 1, RIVER VILLAGE ESTATES is assumed to bear N89°23'59\"/>

There is a Drainage and Utility Easement over all of Lot 15, Block 1, and all of Lot 7, Block 2.

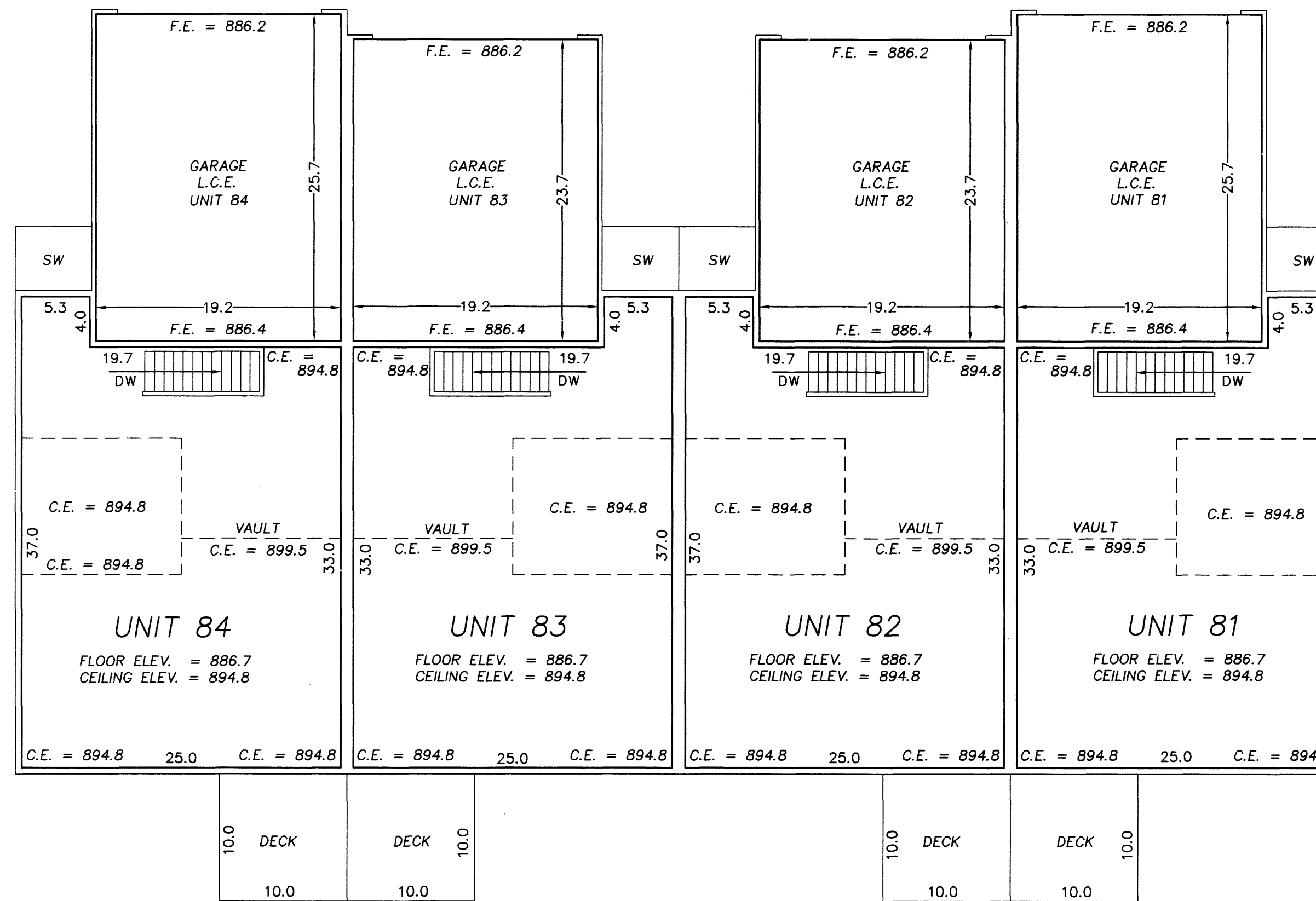
B.M. = T.N.H. 86TH AVE AND NORWAY STREET = 878.98 (N.G.V.D.-1929)



CIC NUMBER 38 RIVER VILLAGE ESTATES CONDOMINIUM THIRD SUPPLEMENTAL CIC PLAT

COMMON ELEMENT

MAIN LEVEL



COMMON ELEMENT

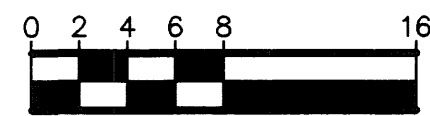
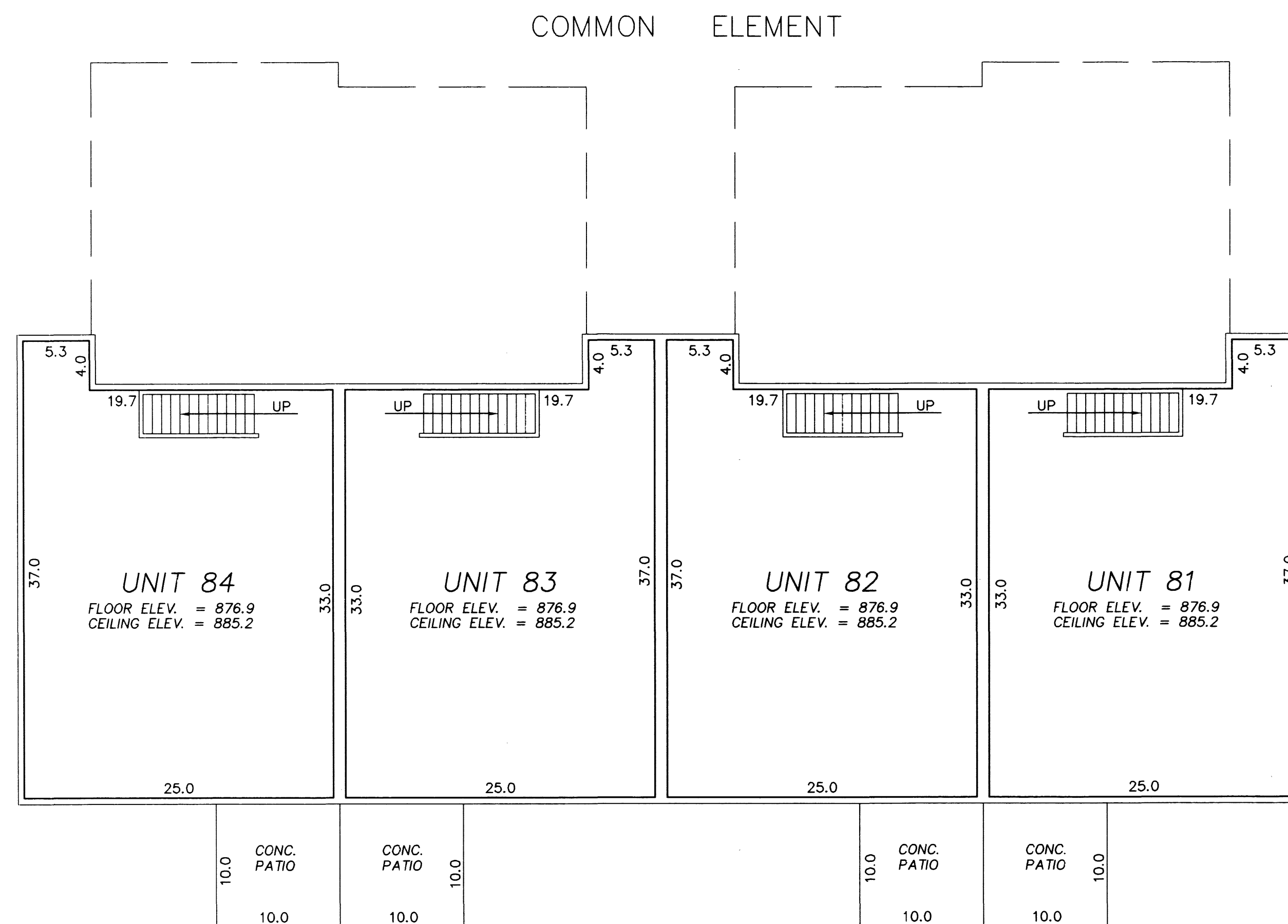


HEDLUND
PLANNING ENGINEERING SURVEYING

0 2 4 6 8 16
SCALE IN FEET
1 Inch = 8 Feet

- * All Sidewalks, Decks and Patios are LIMITED COMMON ELEMENTS assigned to the UNIT adjoining thereto.
- * L.C.E.— Denotes Limited Common Element
- * Elevations shown are referenced to a bench mark as denoted on Sheet 1 of 3 Sheets.
- * All inside finished surface to inside finished surface dimensions and elevations are shown in feet and tenths of a foot.
- * SW — Denotes Sidewalk
- * C.E. — Denotes Ceiling Elevation
- * F.E. — Denotes Floor Elevation

CIC NUMBER 38 RIVER VILLAGE ESTATES CONDOMINIUM THIRD SUPPLEMENTAL CIC PLAT



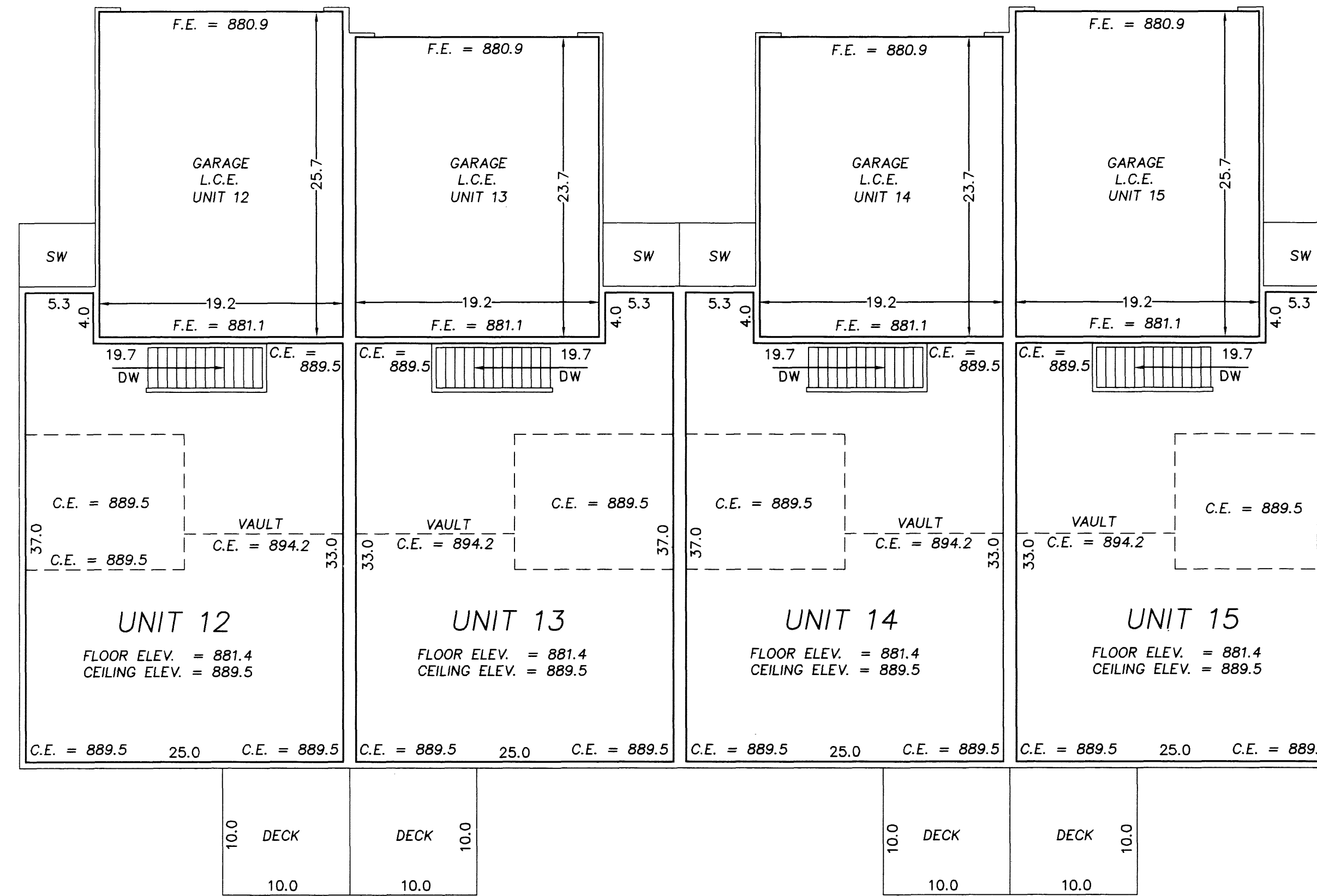
SCALE IN FEET
1 Inch = 8 Feet

- * All Sidewalks, Decks and Patios are LIMITED COMMON ELEMENTS assigned to the UNIT adjoining thereto.
- * L.C.E.— Denotes Limited Common Element
- * Elevations shown are referenced to a bench mark as denoted on Sheet 1 of 3 Sheets.
- * All inside finished surface to inside finished surface dimensions and elevations are shown in feet and tenths of a foot.
- * SW — Denotes Sidewalk
- * C.E. — Denotes Ceiling Elevation
- * F.E. — Denotes Floor Elevation

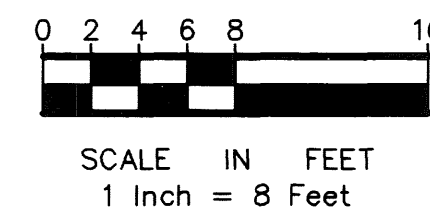
CIC NUMBER 38 RIVER VILLAGE ESTATES CONDOMINIUM THIRD SUPPLEMENTAL CIC PLAT

COMMON ELEMENT

MAIN LEVEL

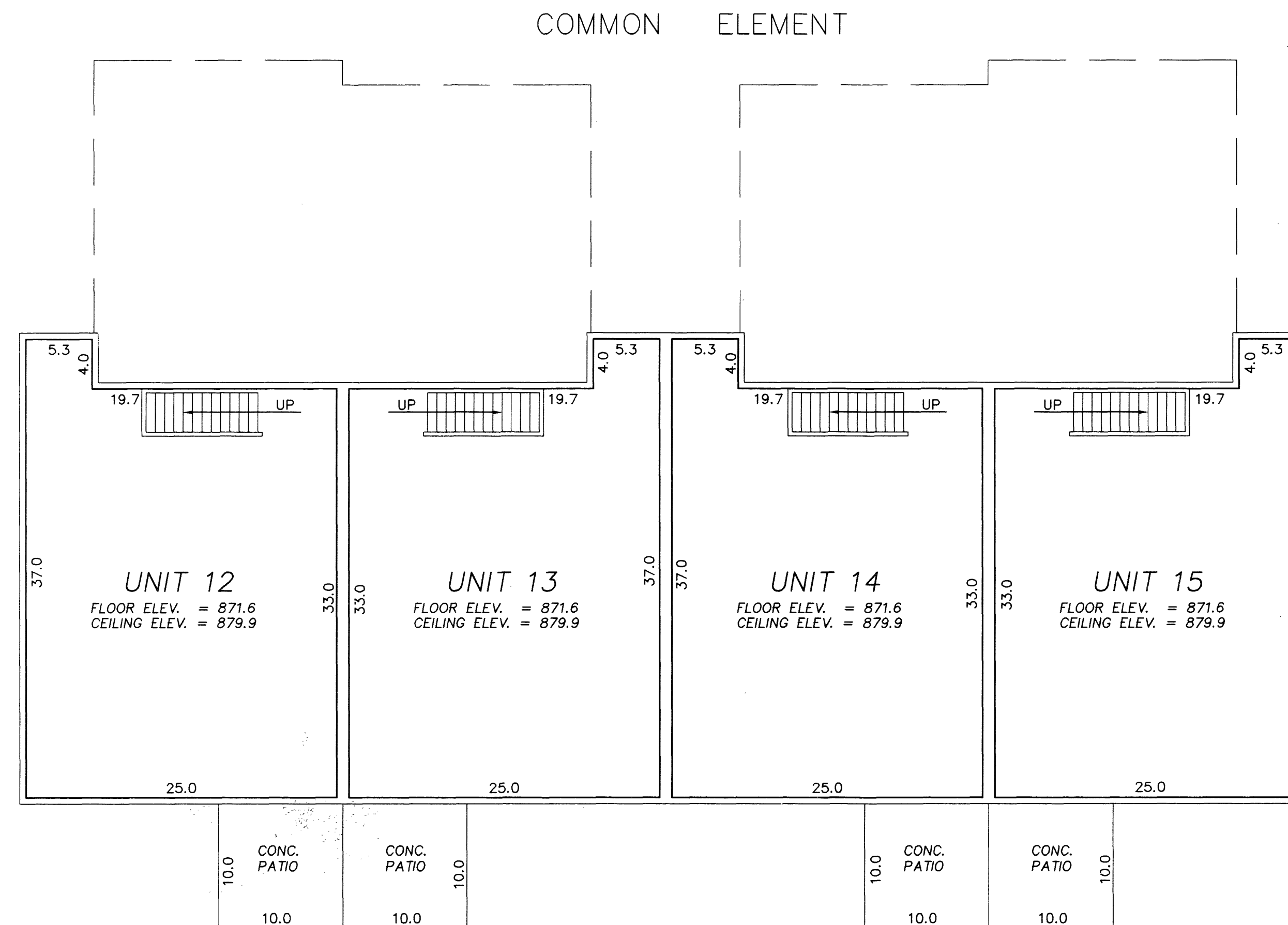


COMMON ELEMENT



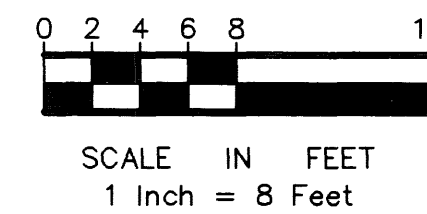
- * All Sidewalks, Decks and Patios are LIMITED COMMON ELEMENTS assigned to the UNIT adjoining thereto.
- * L.C.E.- Denotes Limited Common Element
- * Elevations shown are referenced to a bench mark as denoted on Sheet 1 of 3 Sheets.
- * All inside finished surface to inside finished surface dimensions and elevations are shown in feet and tenths of a foot.
- * SW - Denotes Sidewalk
- * C.E. - Denotes Ceiling Elevation
- * F.E. - Denotes Floor Elevation

CIC NUMBER 38 RIVER VILLAGE ESTATES CONDOMINIUM THIRD SUPPLEMENTAL CIC PLAT



LOWER LEVEL

COMMON ELEMENT



- * All Sidewalks, Decks and Patios are LIMITED COMMON ELEMENTS assigned to the UNIT adjoining thereto.
- * L.C.E.- Denotes Limited Common Element
- * Elevations shown are referenced to a bench mark as denoted on Sheet 1 of 3 Sheets.
- * All inside finished surface to inside finished surface dimensions and elevations are shown in feet and tenths of a foot.
- * SW - Denotes Sidewalk
- * C.E. - Denotes Ceiling Elevation
- * F.E. - Denotes Floor Elevation