

OFFICIAL PLAT

CIC NUMBER 93

RIVERSPOINTE CONDOMINIUMS, A CONDOMINIUM

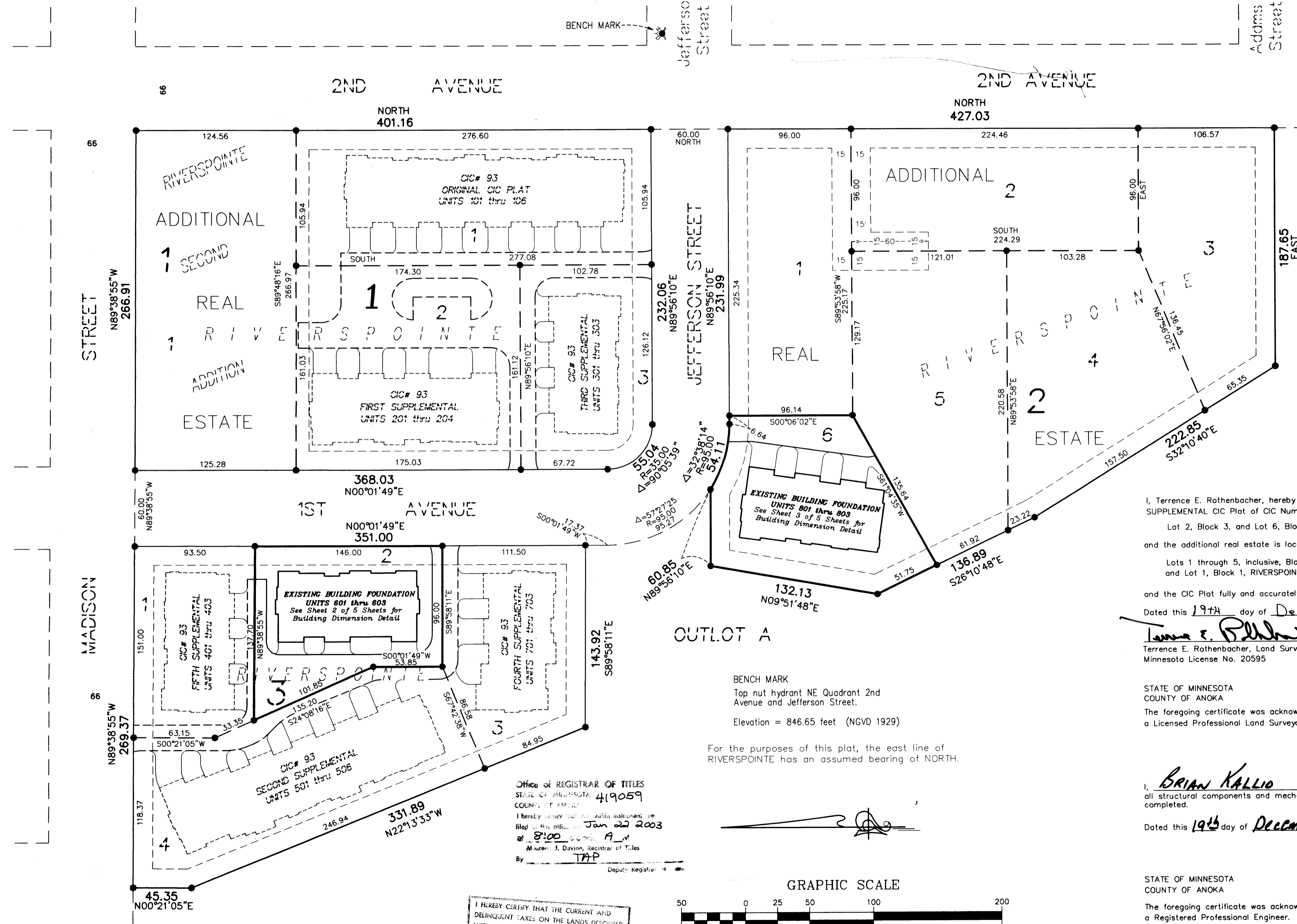
SIXTH SUPPLEMENTAL

CIC PLAT

Bk 5 of CIC, pg 28

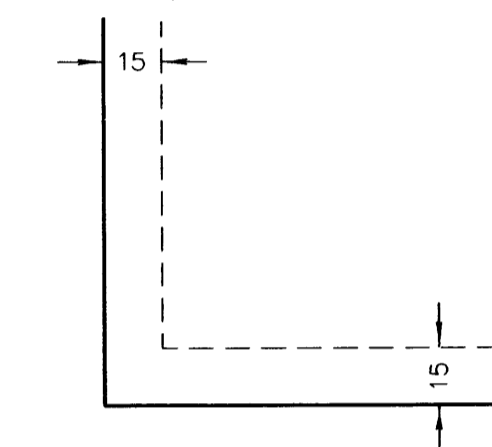
This SIXTH SUPPLEMENTAL CIC PLAT is part of the Declaration filed as Document No. 419059 on this 22nd day of January, 2003.
Tracy Whalen, Deputy
ANOKA COUNTY RECORDER

CITY OF ANOKA
COUNTY OF ANOKA
SEC. 12, TWP. 31, RGE. 25



● Denotes 1/2 inch by 14 inch iron monument set and marked with license number 18420

DRAINAGE AND UTILITY EASEMENTS ARE PER PLAT OF RIVERSPOINTE AND ARE SHOWN AS THUS: (NOT TO SCALE)



Being 15 feet in width and adjoining all block lines unless otherwise shown.

I, Terrence E. Rothenbacher, hereby certify that the work was undertaken by or reviewed and approved by me for this SIXTH SUPPLEMENTAL CIC Plat of CIC Number 93, RIVERSPOINTE CONDOMINIUMS, A CONDOMINIUM, being located upon Lot 2, Block 3, and Lot 6, Block 2, RIVERSPOINTE, Anoka County, Minnesota, and the additional real estate is located upon the following described property designated as:
Lots 1 through 5, inclusive, Block 2; all in RIVERSPOINTE, Anoka County, Minnesota, and Lot 1, Block 1, RIVERSPOINTE SECOND ADDITION, Anoka County, Minnesota
and the CIC Plat fully and accurately depicts all information required by Minnesota Statutes, Section 515B.2-110.
Dated this 19th day of December, 2002.

Terrence E. Rothenbacher
Terrence E. Rothenbacher, Land Surveyor
Minnesota License No. 20595

STATE OF MINNESOTA
COUNTY OF ANOKA
The foregoing certificate was acknowledged before me this 19th day of DECEMBER, 2002, by Terrence E. Rothenbacher, a Licensed Professional Land Surveyor.

CHRISTOPHER E SHARP
NOTARY PUBLIC
MY COMM. EXP. 01/31/2005

Christopher E. Sharp
Notary Public, Anoka County, Minnesota
My Commission Expires January 31, 2005

I, Brian F. Kallio pursuant to Minnesota Statutes, Section 515B.2-101(c), do hereby certify that all the units and all structural components and mechanical systems of all buildings containing or comprising any units hereby created, are substantially completed.
Dated this 19th day of DECEMBER, 2002.

Brian F. Kallio
Registered Professional Engineer
Minnesota Registration No. 25817

STATE OF MINNESOTA
COUNTY OF ANOKA
The foregoing certificate was acknowledged before me this 19th day of DECEMBER, 2002, by BRIAN F. KALLIO a Registered Professional Engineer.

CHRISTOPHER E SHARP
NOTARY PUBLIC
MY COMM. EXP. 01/31/2005

Christopher E. Sharp
Notary Public, Anoka County, Minnesota
My Commission Expires January 31, 2005

Checked and approved this 9th day of January, 2003.

Larry D. Hain
Anoka County Surveyor

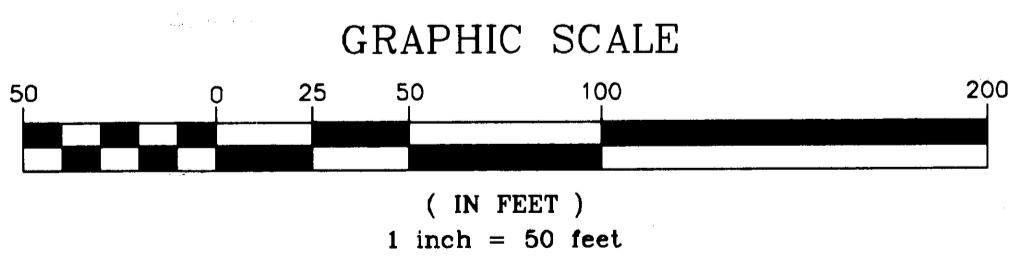
2003013603 \$296.00

Office of REGISTRAR OF TITLES
STATE OF MINNESOTA
COUNTY OF ANOKA
I hereby certify that the within instrument was filed in this office on Jan 22 2003 at 8:00 P.M.
Marian J. Davine, Registrar of Titles
By *TAP* Deputy Registrar

I HEREBY CERTIFY THAT THE CURRENT AND DELINQUENT TAXES ON THE LANDS DESCRIBED WITHIN ARE PAID AND THE TRANSFER IS ENTERED
Jan 22, 2003
Marian J. Davine
PROPERTY TAX ADMINISTRATOR
BY *S. Culver*
DEPUTY PROPERTY TAX ADMINISTRATOR

BENCH MARK
Tap nut hydrant NE Quadrant 2nd Avenue and Jefferson Street.
Elevation = 846.65 feet (NGVD 1929)

For the purposes of this plat, the east line of RIVERSPOINTE has an assumed bearing of NORTH.



PIONEER engineering
LAND SURVEYORS • CIVIL ENGINEERS
LAND PLANNERS • LANDSCAPE ARCHITECTS

OFFICIAL PLAT

SITE PLAN DETAIL
(AS BUILT)

CIC NUMBER 93

RIVERSPOINTE CONDOMINIUMS, A CONDOMINIUM

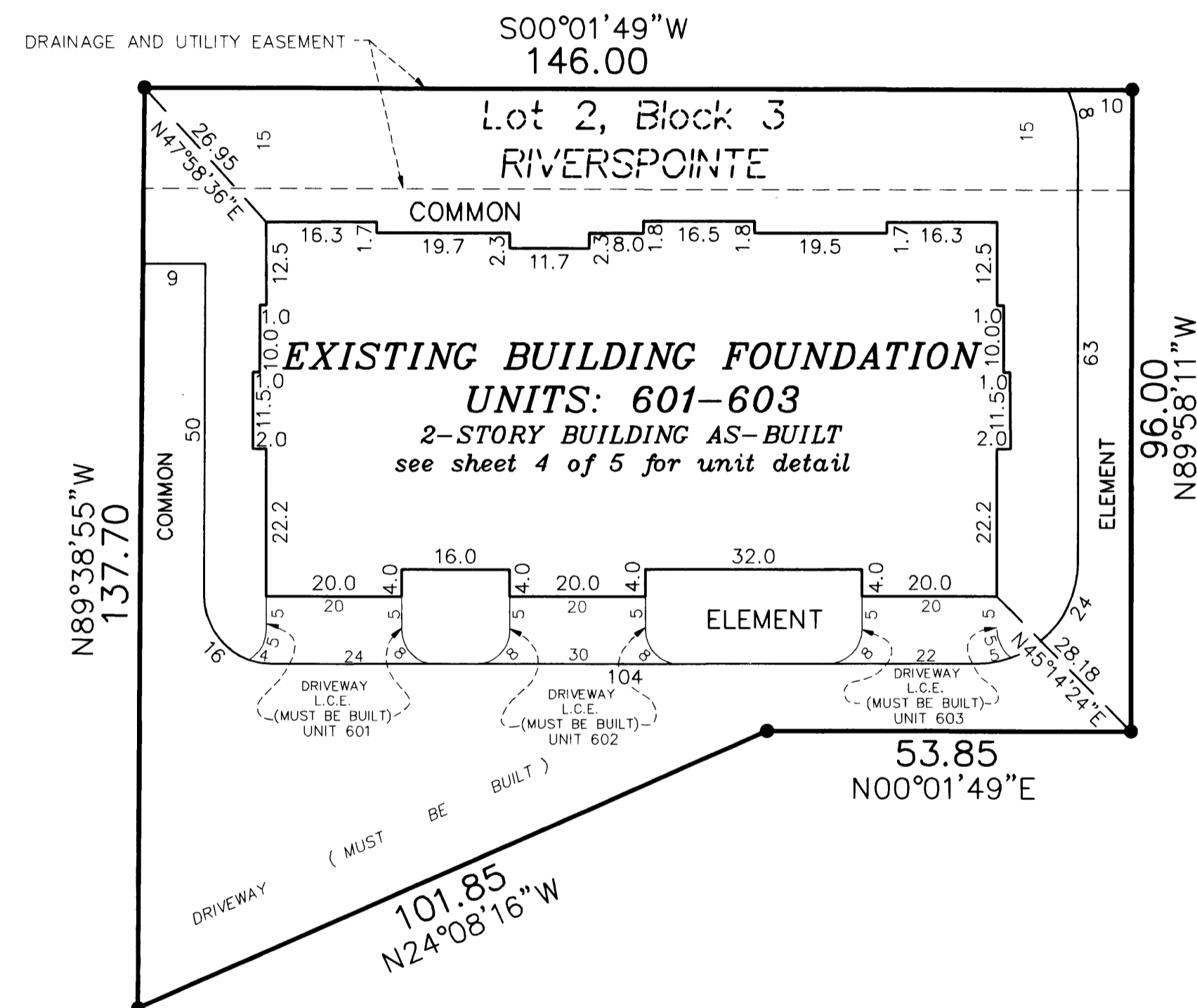
SIXTH SUPPLEMENTAL

CIC PLAT

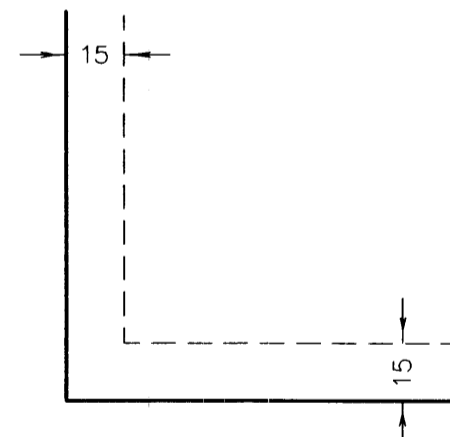
Bk 5 of CIC Pg 28

C.R. DOC. NO. 419059

CITY OF ANOKA
COUNTY OF ANOKA
SEC. 12, TWP. 31, RGE. 25



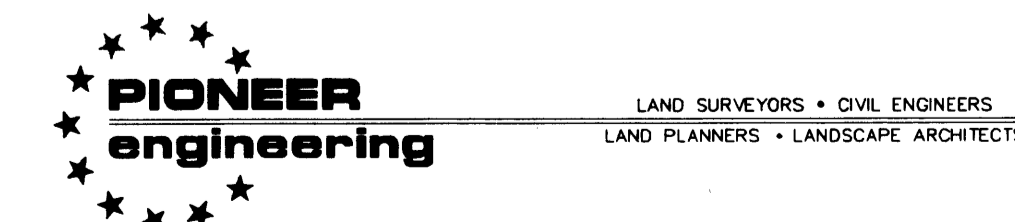
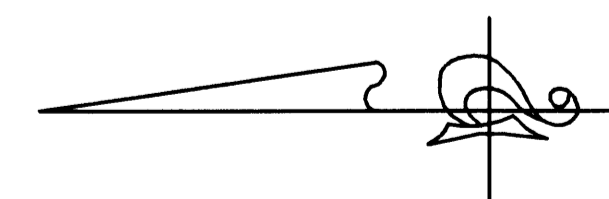
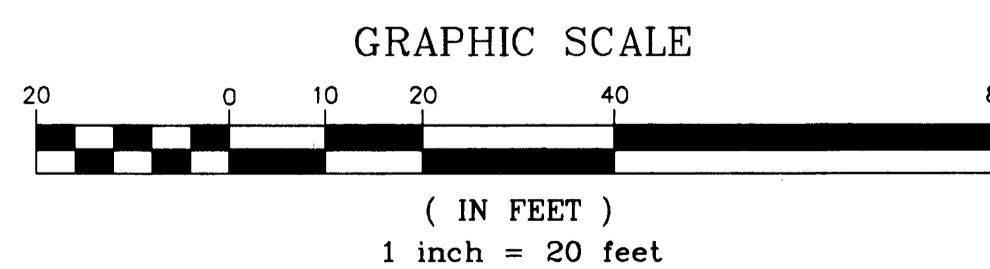
DRAINAGE AND UTILITY EASEMENTS
ARE PER PLAT OF RIVERSPOINTE
AND ARE SHOWN AS THIS:
(NOT TO SCALE)



Being 15 feet in width and adjoining all block lines
unless otherwise shown.

For the purposes of this plat, the east line of RIVERSPOINTE
has an assumed bearing of NORTH

- Denotes found 1/2" iron pipe monument marked by license number 18420
- Exterior dimensions shown are measured to the outside of the foundation.
- L.C.E. = Limited Common Element



200313603 \$296.00

OFFICIAL PLAT

SITE PLAN DETAIL
(AS BUILT)

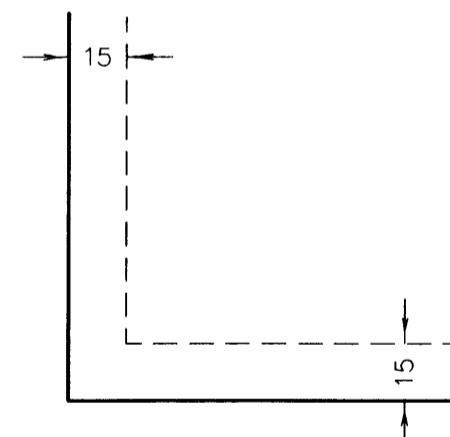
CIC NUMBER 93
RIVERSPOINTE CONDOMINIUMS, A CONDOMINIUM
SIXTH SUPPLEMENTAL
CIC PLAT

Bk 5 of CIC pg 28

C.R. DOC. NO. 419059

CITY OF ANOKA
COUNTY OF ANOKA
SEC. 12, TWP. 31, RGE. 25

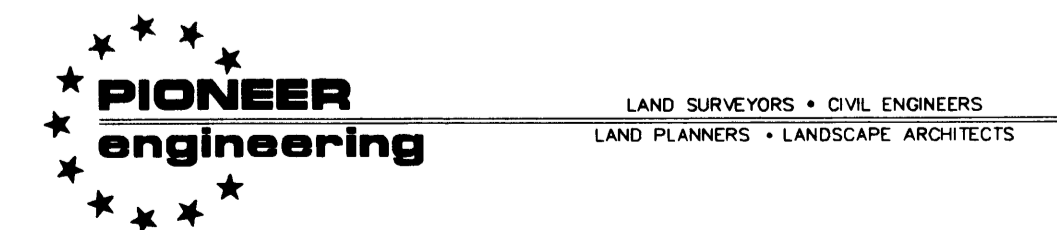
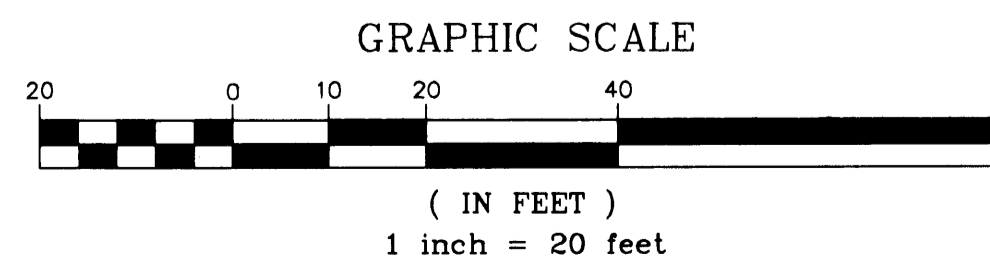
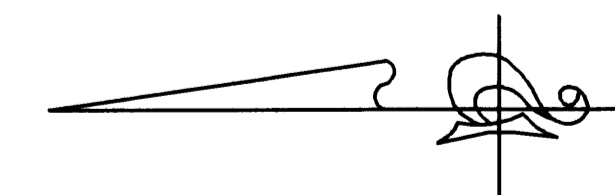
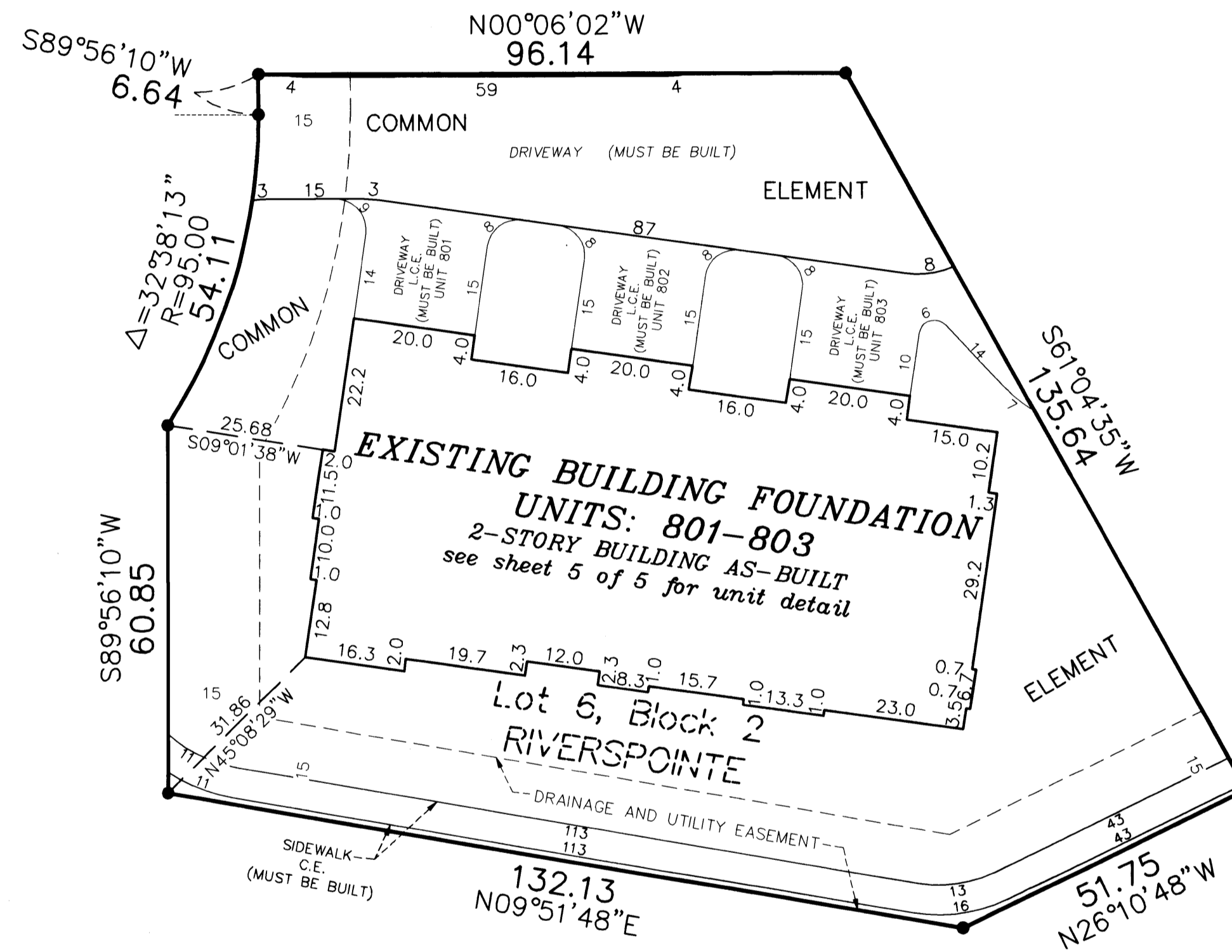
DRAINAGE AND UTILITY EASEMENTS
ARE PER PLAT OF RIVERSPOINTE
AND ARE SHOWN AS THUS:
(NOT TO SCALE)



Being 15 feet in width and adjoining all block lines
unless otherwise shown.

For the purposes of this plat, the east line of RIVERSPOINTE
has an assumed bearing of NORTH

- Denotes found 1/2" iron pipe monument marked by license number 18420
- Exterior dimensions shown are measured to the outside of the foundation.
- L.C.E. = Limited Common Element



200313603 \$ 296.00

CIC NUMBER 93

RIVERSPOINTE CONDOMINIUMS, A CONDOMINIUM

SIXTH SUPPLEMENTAL

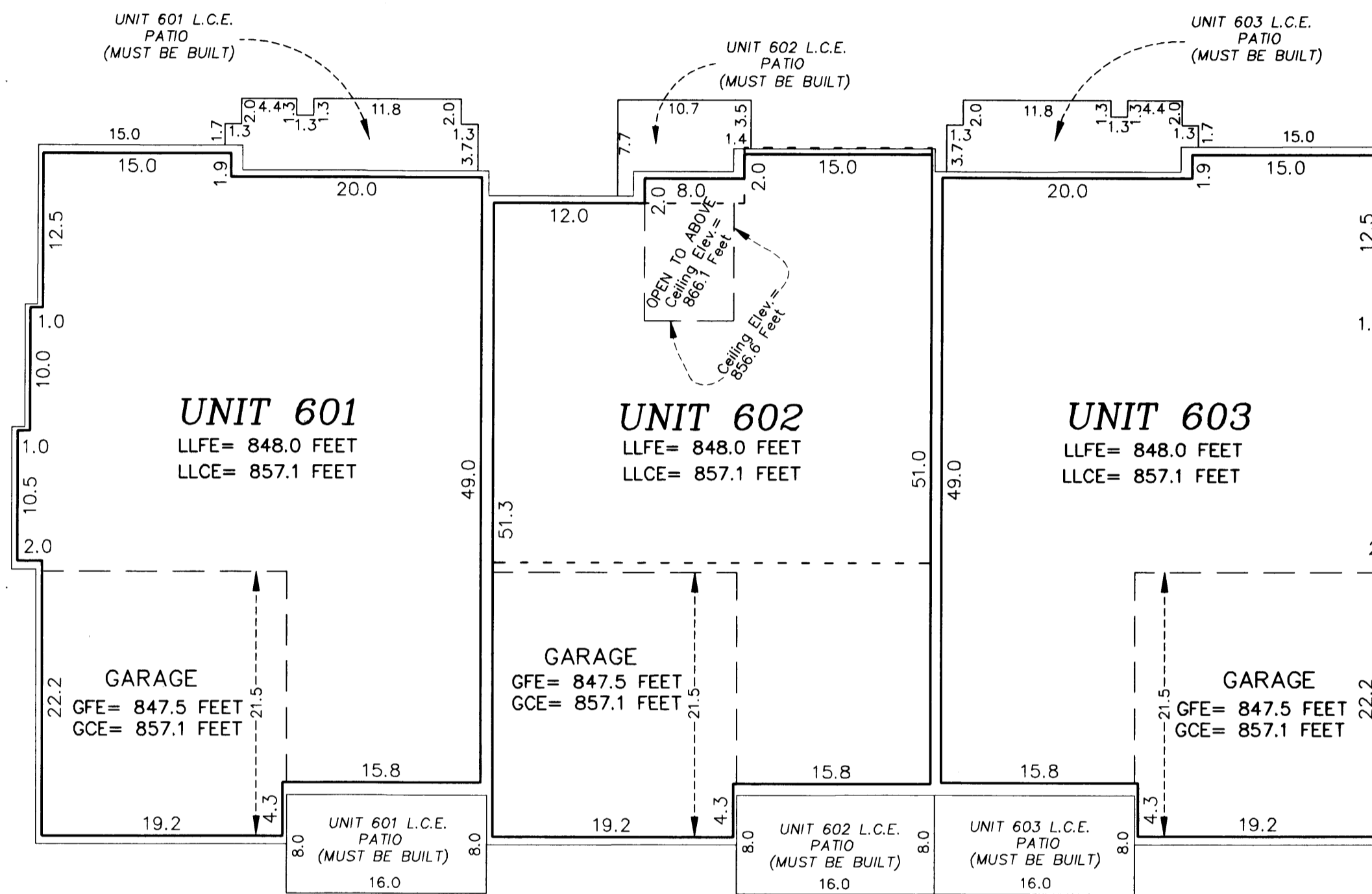
CIC PLAT

C.R. DOC. NO. 419059

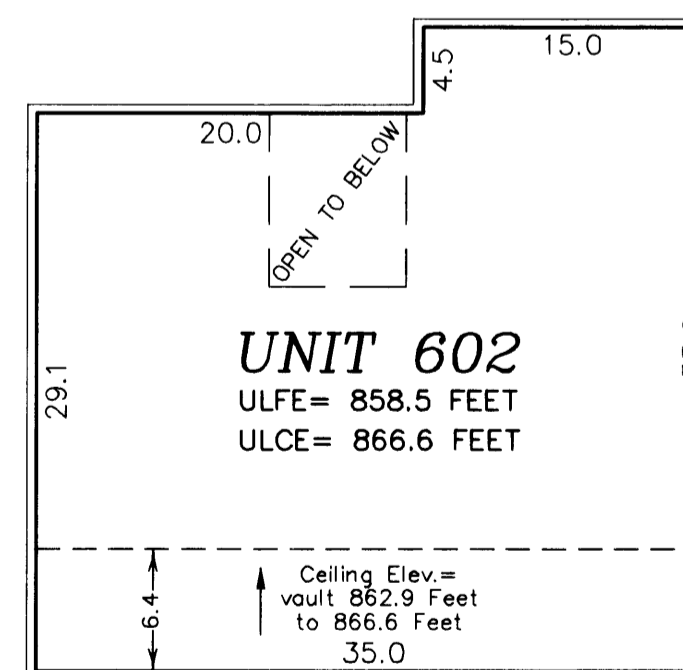
CITY OF ANOKA
COUNTY OF ANOKA
SEC. 12, TWP. 31, RGE. 25

UNIT DETAIL
(AS-BUILT)

LOWER LEVEL



UPPER LEVEL



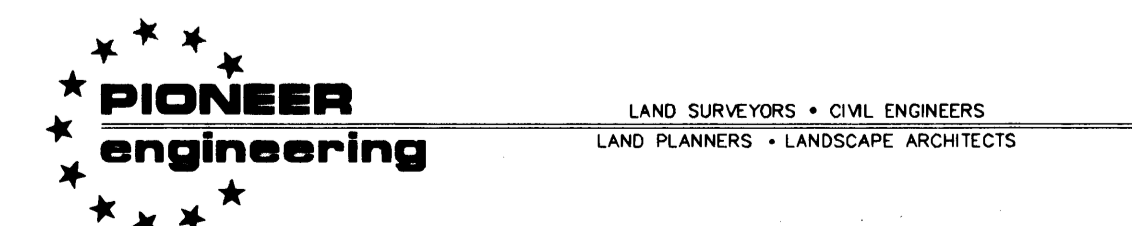
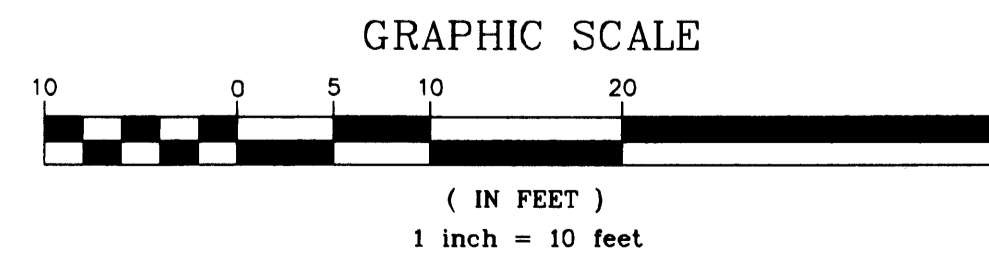
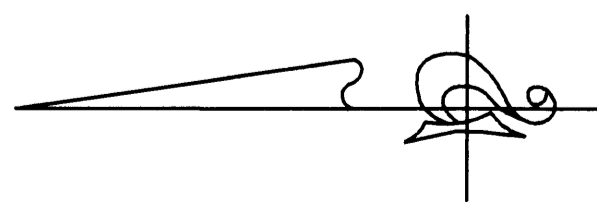
Garage Floor Elevation = GFE
 Garage Ceiling Elevation = GCE
 Lower Level Floor Elevation = LLFE
 Lower Level Ceiling Elevation = LLCE
 Upper Level Floor Elevation = ULFE
 Upper Level Ceiling Elevation = ULCE

Elevations are referred to a benchmark as noted on the site plan on Sheet 1 of 5 Sheets and are shown in feet and tenths of a foot.

L.C.E. = Limited Common Element
 C.E. = Common Element

Interior dimensions shown are measured to the unfinished surface of the walls, floors and ceiling.

- - - - Denotes Location of Upper Level



200313603 \$296.00

CIC NUMBER 93

RIVERSPOINTE CONDOMINIUMS, A CONDOMINIUM

SIXTH SUPPLEMENTAL

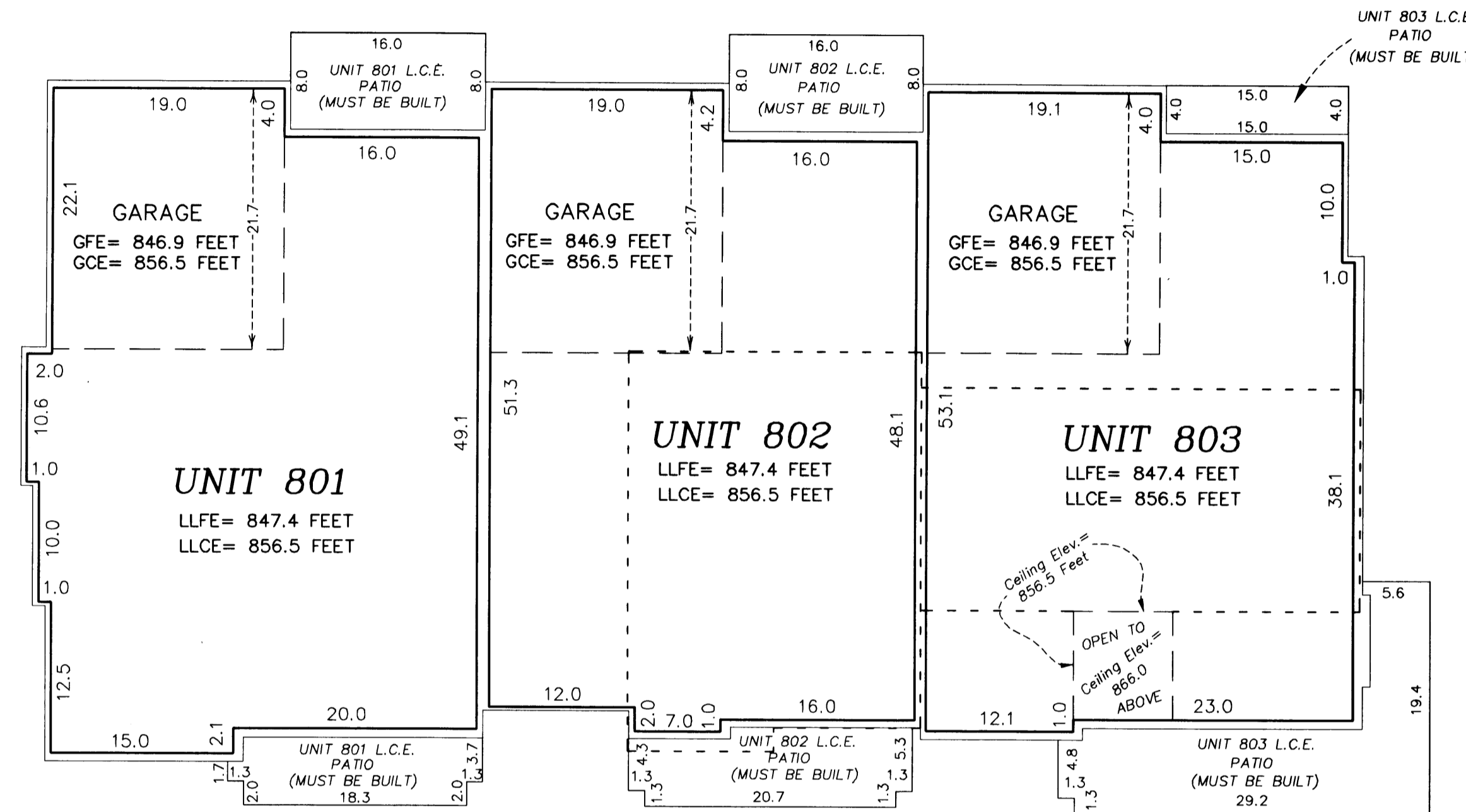
CIC PLAT

C.R. DOC. NO. 419059

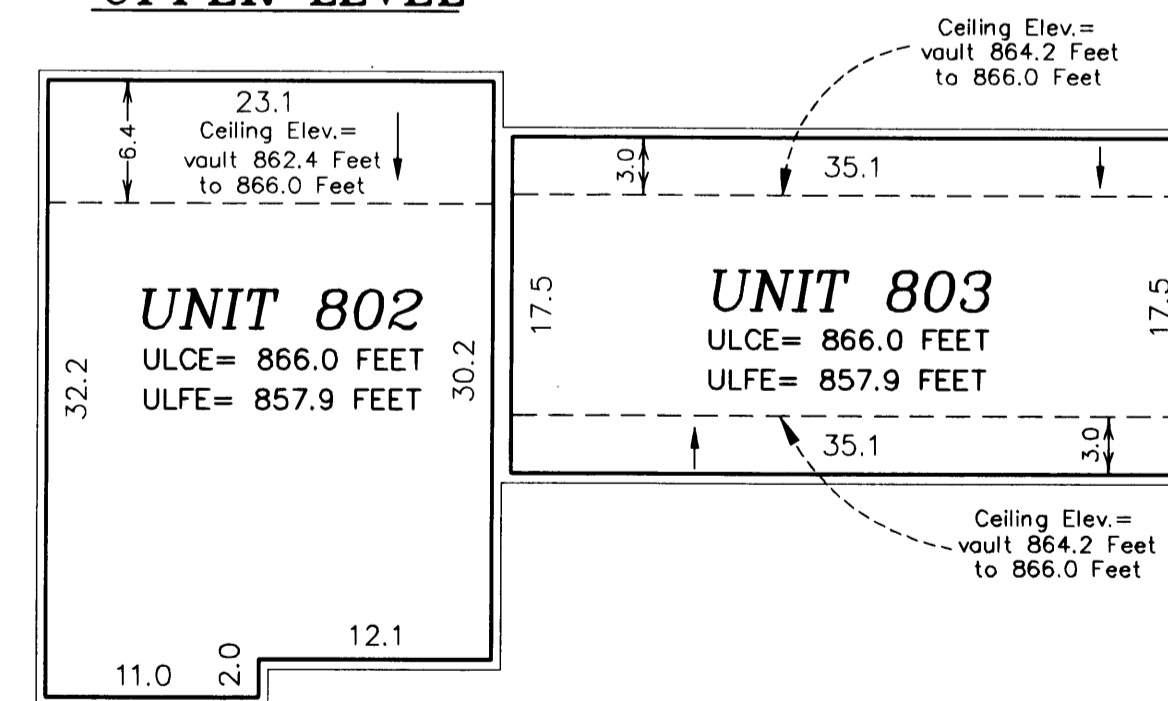
CITY OF ANOKA
COUNTY OF ANOKA
SEC. 12, TWP. 31, RGE. 25

UNIT DETAIL
(AS-BUILT)

LOWER LEVEL



UPPER LEVEL



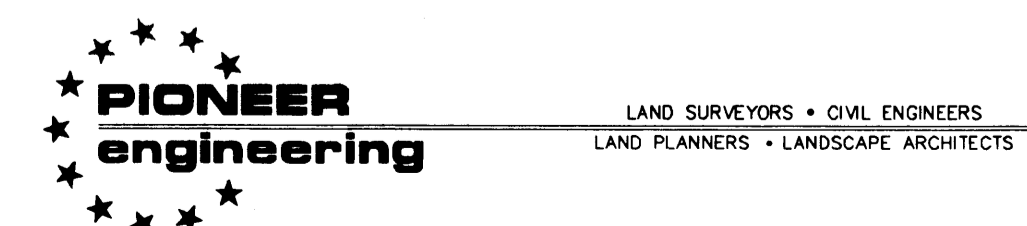
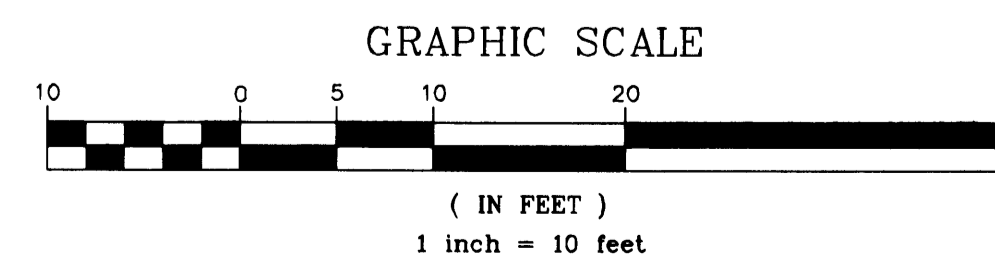
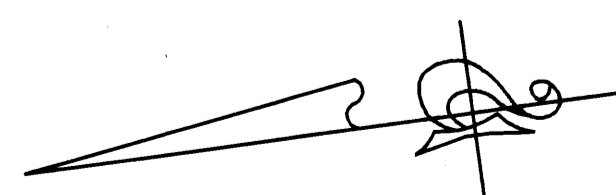
Garage Floor Elevation = GFE
 Garage Ceiling Elevation = GCE
 Lower Level Floor Elevation = LLFE
 Lower Level Ceiling Elevation = LLCE
 Upper Level Floor Elevation = ULFE
 Upper Level Ceiling Elevation = ULCE

Elevations are referred to a benchmark as noted on the site plan on Sheet 1 of 5 Sheets and are shown in feet and tenths of a foot.

L.C.E. = Limited Common Element
 C.E. = Common Element

Interior dimensions shown are measured to the unfinished surface of the walls, floors and ceiling.

- - - - Denotes Location of Upper Level



200313603 \$296.00