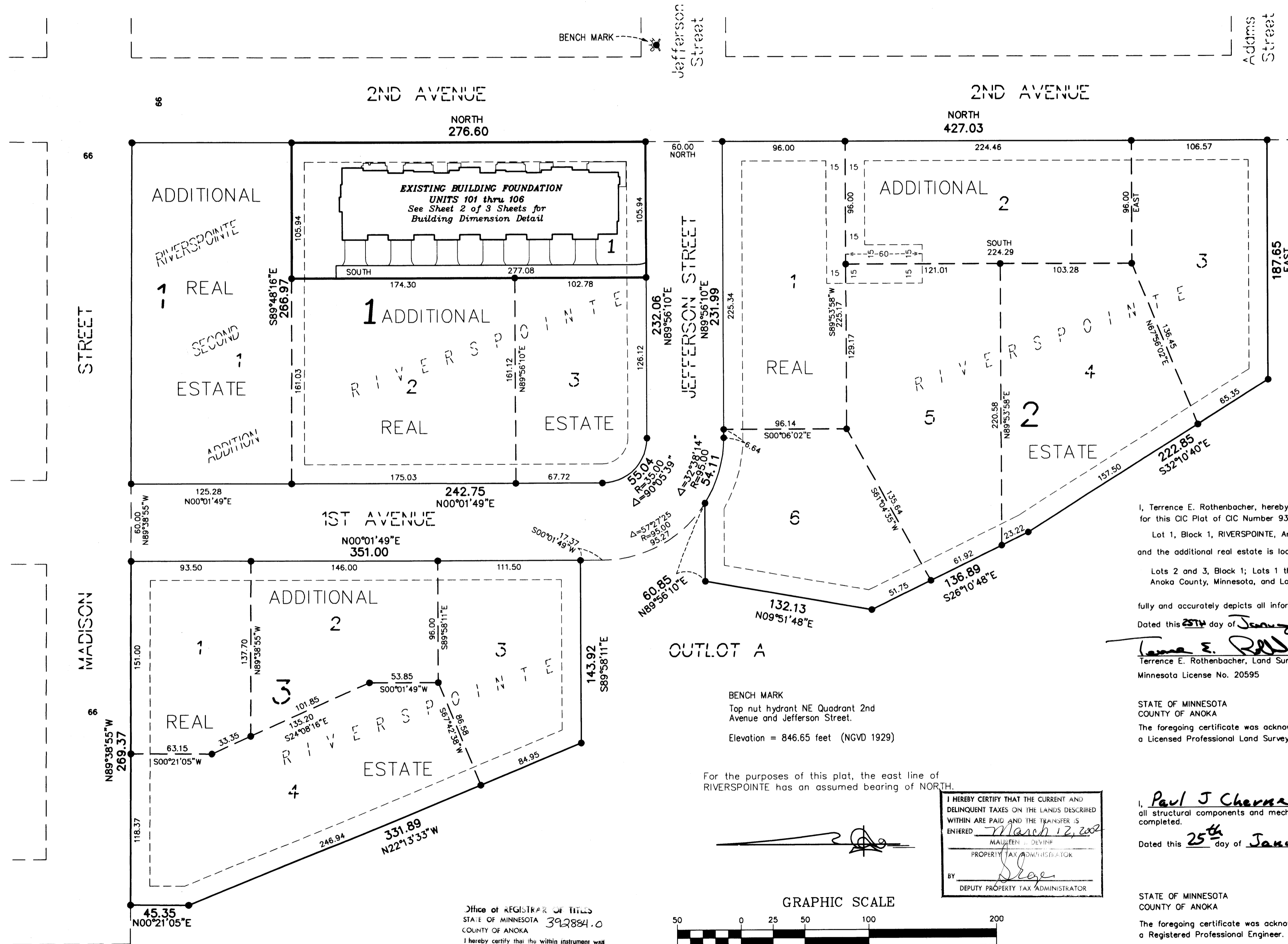


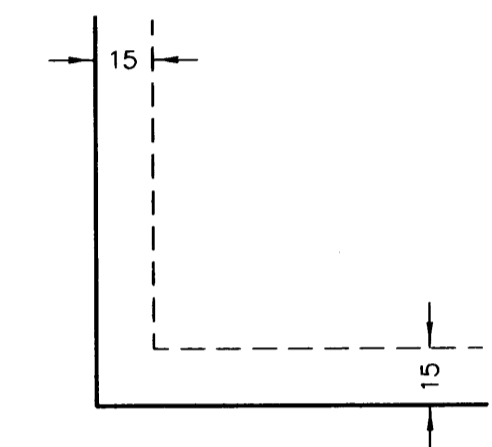
RIVERSPOINTE CONDOMINIUMS, A CONDOMINIUM CIC PLAT

CITY OF ANOKA COUNTY OF ANOKA SEC. 12, TWP. 31, RGE. 25



• Denotes 1/2 inch by 14 inch iron monument set and marked with license number 18420

DRAINAGE AND UTILITY EASEMENTS ARE PER PLAT OF RIVERSPOINTE AND ARE SHOWN AS THUS: (NOT TO SCALE)



Being 15 feet in width and adjoining all block lines unless otherwise shown.

I, Terrence E. Rothenbacher, hereby certify that the work was undertaken by or reviewed and approved by me for this CIC Plat of CIC Number 93, RIVERSPOINTE CONDOMINIUMS, A CONDOMINIUM, being located upon

Lot 1, Block 1, RIVERSPOINTE, Anoka County, Minnesota,

and the additional real estate is located upon the following described property designated as:

Lots 2 and 3, Block 1; Lots 1 through 6, inclusive, Block 2; Lots 1 through 4, inclusive, Block 3, all in RIVERSPOINTE, Anoka County, Minnesota, and Lot 1, Block 1, RIVERSPOINTE SECOND ADDITION, Anoka County, Minnesota

fully and accurately depicts all information required by Minnesota Statutes, Section 515B.2-110.

Dated this 25th day of January, 2002.

Terrence E. Rothenbacher, Land Surveyor Minnesota License No. 20595

STATE OF MINNESOTA COUNTY OF ANOKA

The foregoing certificate was acknowledged before me this 25th day of January, 2002, by Terrence E. Rothenbacher, a Licensed Professional Land Surveyor.

CHRISTOPHER E SHARP NOTARY PUBLIC MY COMM. EXP. 01/31/2005

Christopher E. Sharp Notary Public, Anoka County, Minnesota My Commission Expires 01/31/05

I, Paul J. Chane pursuant to Minnesota Statutes, Section 515B.2-101(c), do hereby certify that all the units and all structural components and mechanical systems of all buildings containing or comprising any units hereby created, are substantially completed.

Dated this 25th day of January, 2002.

Paul J. Chane Registered Professional Engineer Minnesota Registration No. 19860

STATE OF MINNESOTA COUNTY OF ANOKA

The foregoing certificate was acknowledged before me this 25th day of January, 2002, by Paul J. Chane a Registered Professional Engineer.

CHRISTOPHER E SHARP NOTARY PUBLIC MY COMM. EXP. 01/31/2005

Christopher E. Sharp Notary Public, Anoka County, Minnesota My Commission Expires 01/31/05

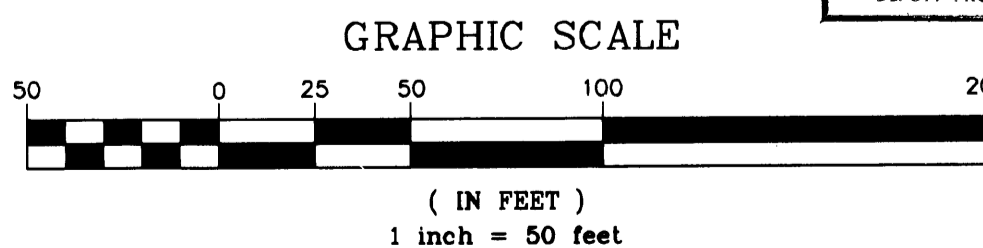
Checked and approved this 13th day of March, 2002.

Land Surveyor Anoka County

BENCH MARK Top nut hydrant NE Quadrant 2nd Avenue and Jefferson Street. Elevation = 846.65 feet (NGVD 1929)

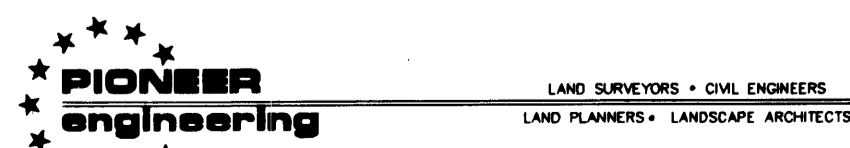
For the purposes of this plat, the east line of RIVERSPOINTE has an assumed bearing of NORTH.

I HEREBY CERTIFY THAT THE CURRENT AND DELINQUENT TAXES ON THE LANDS DESCRIBED WITHIN ARE PAID AND THE TRANSFER IS ENTERED March 12, 2002 MAUREEN J. DEVINE PROPERTY TAX ADMINISTRATOR



Office of REGISTRAR OF TITLES STATE OF MINNESOTA 392884.0 COUNTY OF ANOKA

I hereby certify that the within instrument was filed in this office on MAR 12, 2002 at 4:00 o'clock P.M. Maureen J. Devine, Registrar of Titles By GKE Deputy Registrar of Titles



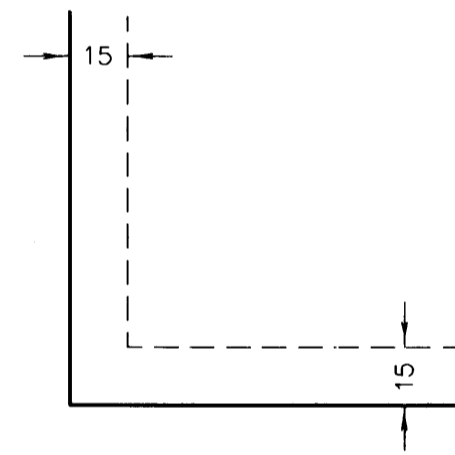
# CIC NUMBER 93

## RIVERSPOINTE CONDOMINIUMS, A CONDOMINIUM

### CIC PLAT

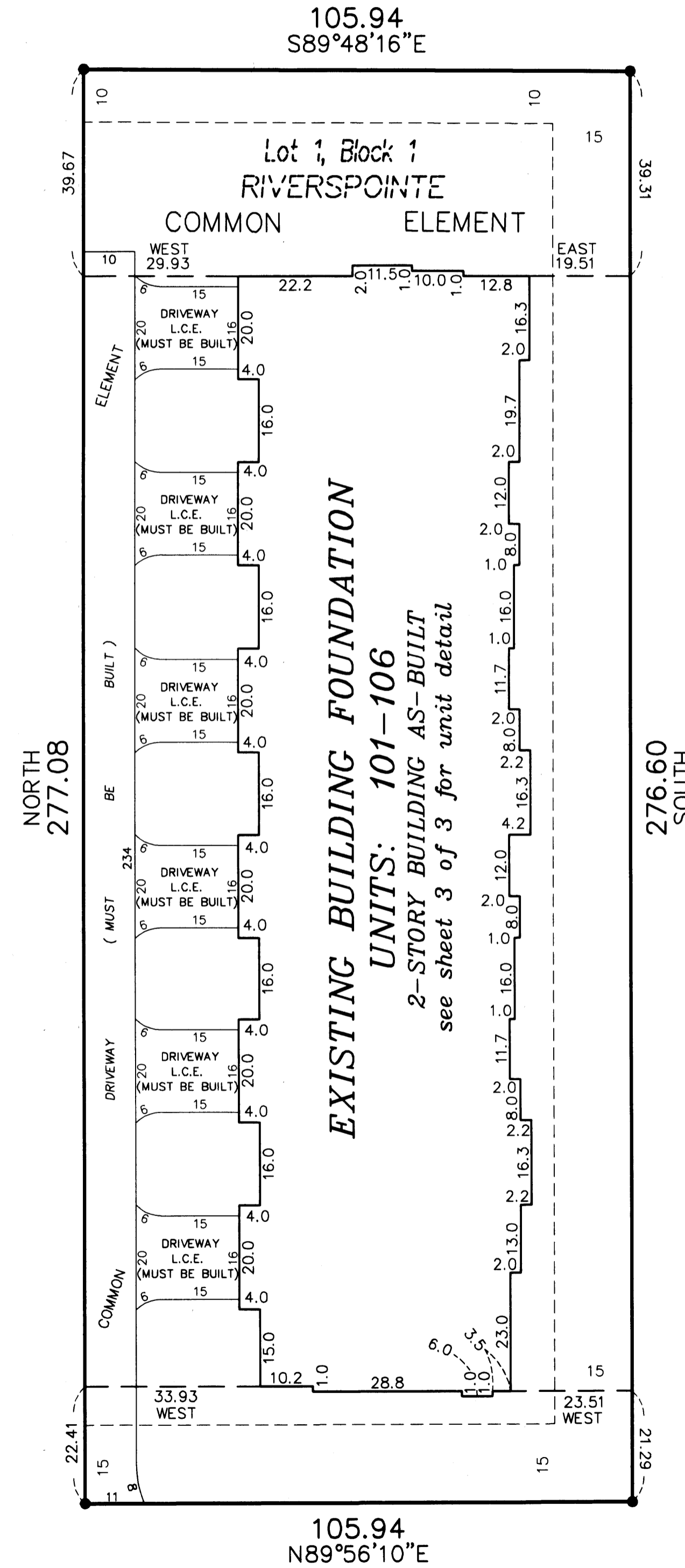
#### SITE PLAN DETAIL (AS BUILT)

DRAINAGE AND UTILITY EASEMENTS  
ARE PER PLAT OF RIVERSPOINTE  
AND ARE SHOWN AS THUS:  
(NOT TO SCALE)

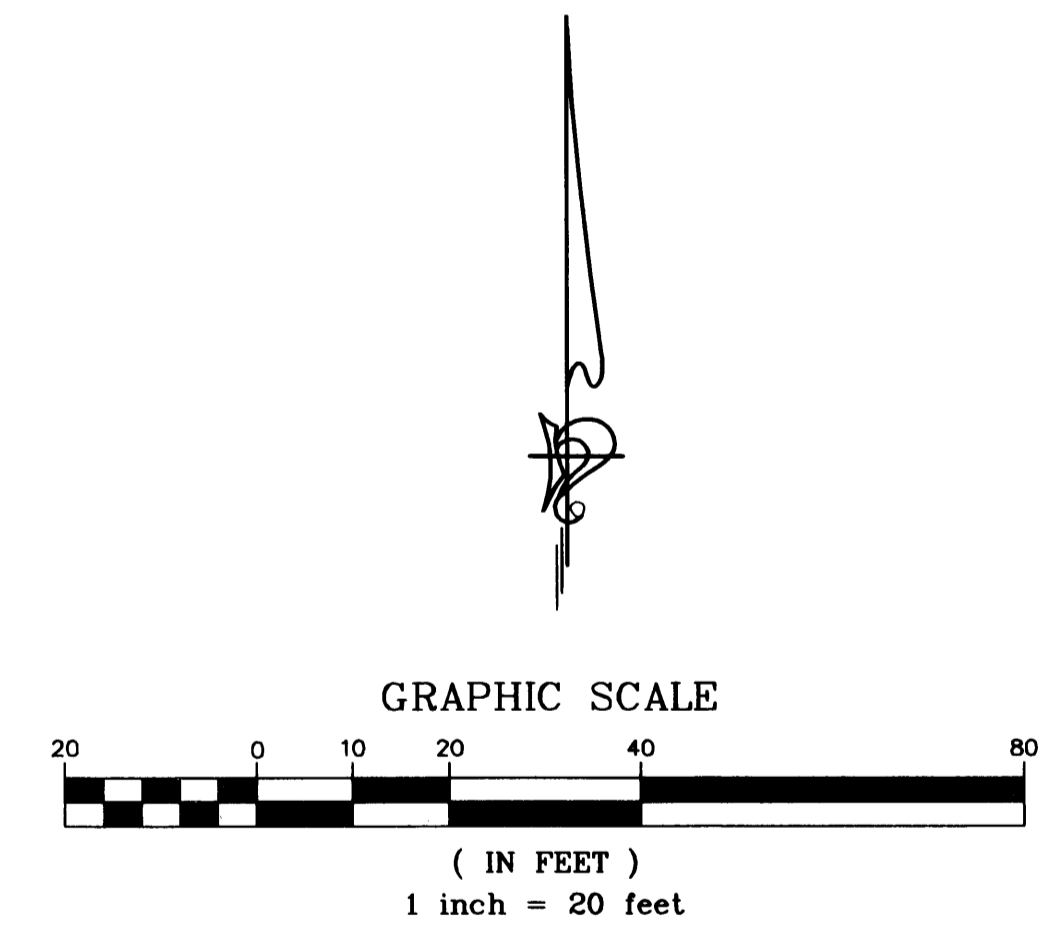


Being 15 feet in width and adjoining all block lines  
unless otherwise shown.

- Denotes found 1/2" iron pipe monument marked by license number 18420
- Exterior dimensions shown are measured to the outside of the foundation.
- L.C.E. = Limited Common Element



For the purposes of this plat, the east line of RIVERSPOINTE  
has an assumed bearing of NORTH



# CIC NUMBER 93

## RIVERSPOINTE CONDOMINIUMS, A CONDOMINIUM

### CIC PLAT

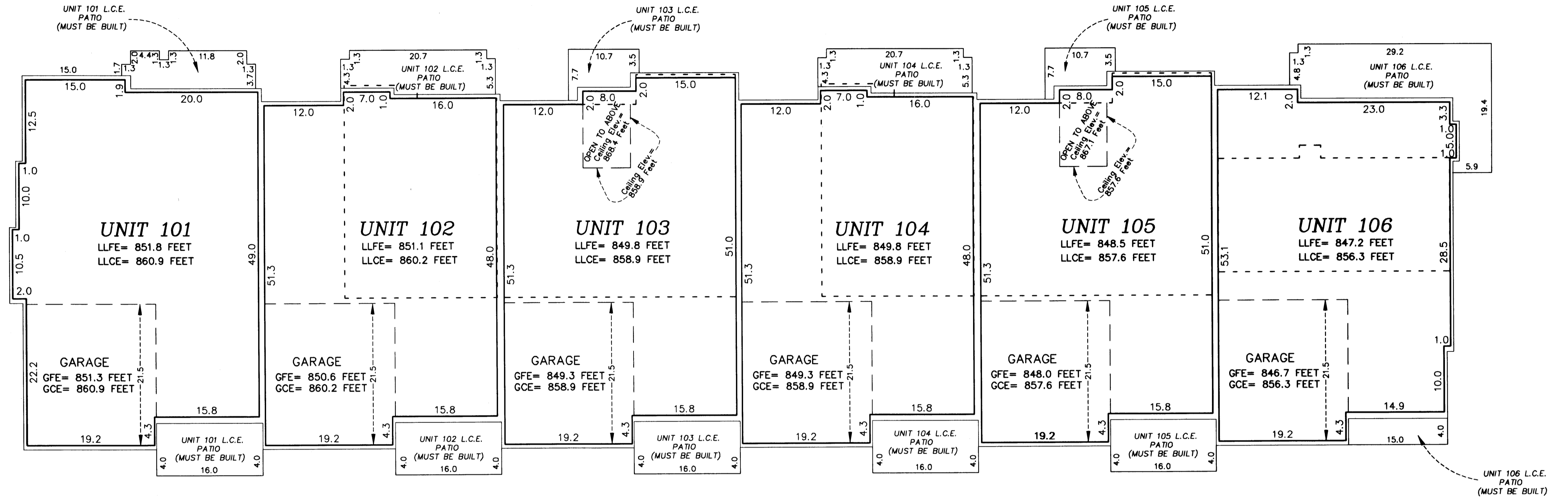
BK 4 of CIC, pg 45

C.R. DOC. NO. 392884

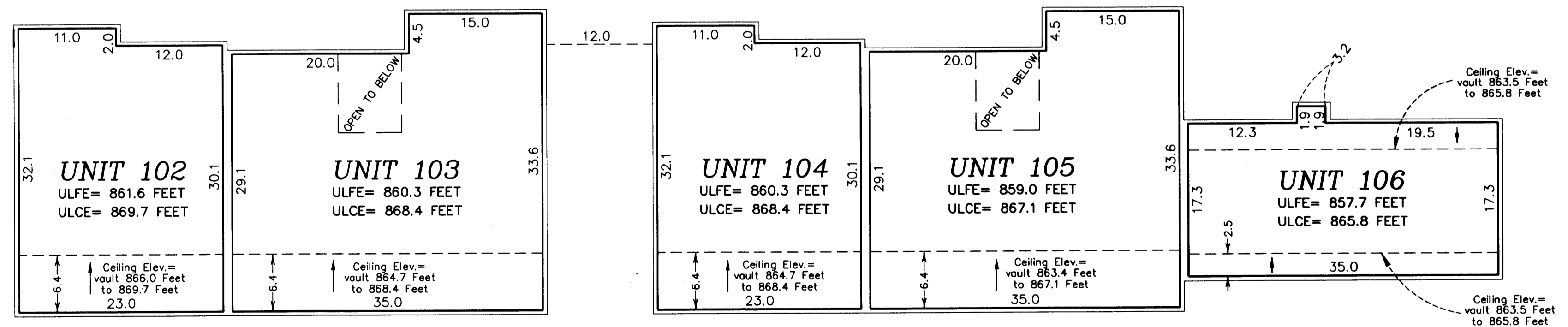
CITY OF ANOKA  
COUNTY OF ANOKA  
SEC. 12, TWP. 31, RGE. 25

#### UNIT DETAIL (AS-BUILT)

#### LOWER LEVEL



#### UPPER LEVEL



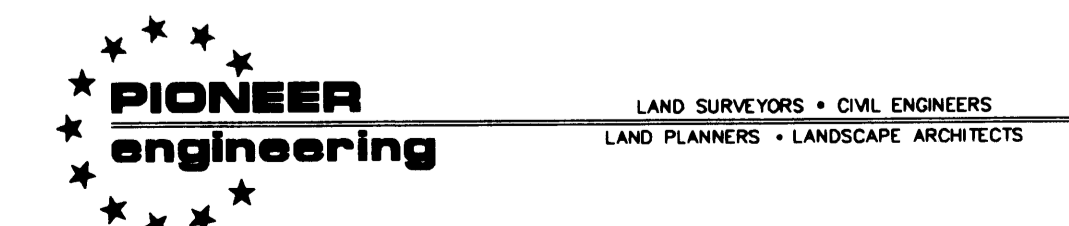
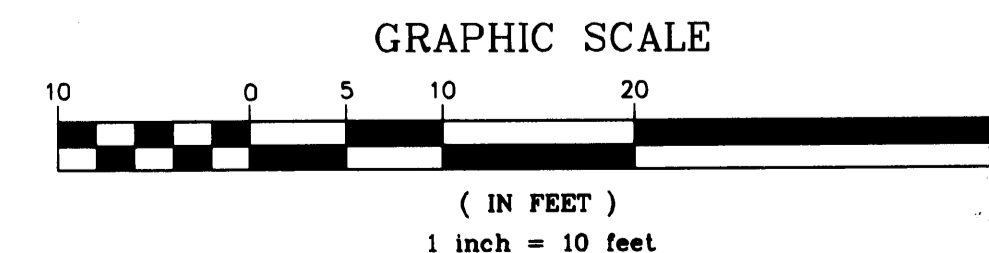
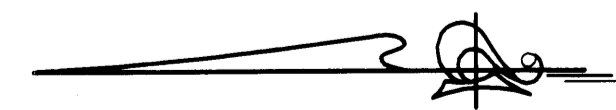
Garage Floor Elevation = GFE  
 Garage Ceiling Elevation = GCE  
 Lower Level Floor Elevation = LLFE  
 Lower Level Ceiling Elevation = LLCE  
 Upper Level Floor Elevation = ULFE  
 Upper Level Ceiling Elevation = ULCE

Elevations are referred to a benchmark as noted on the site plan on Sheet 1 of 3 Sheets and are shown in feet and tenths of a foot.

L.C.E. = Limited Common Element  
 C.E. = Common Element

Interior dimensions shown are measured to the unfinished surface of the walls, floors and ceiling.

--- Denotes Location of Upper Level



2002031530 \$296.00