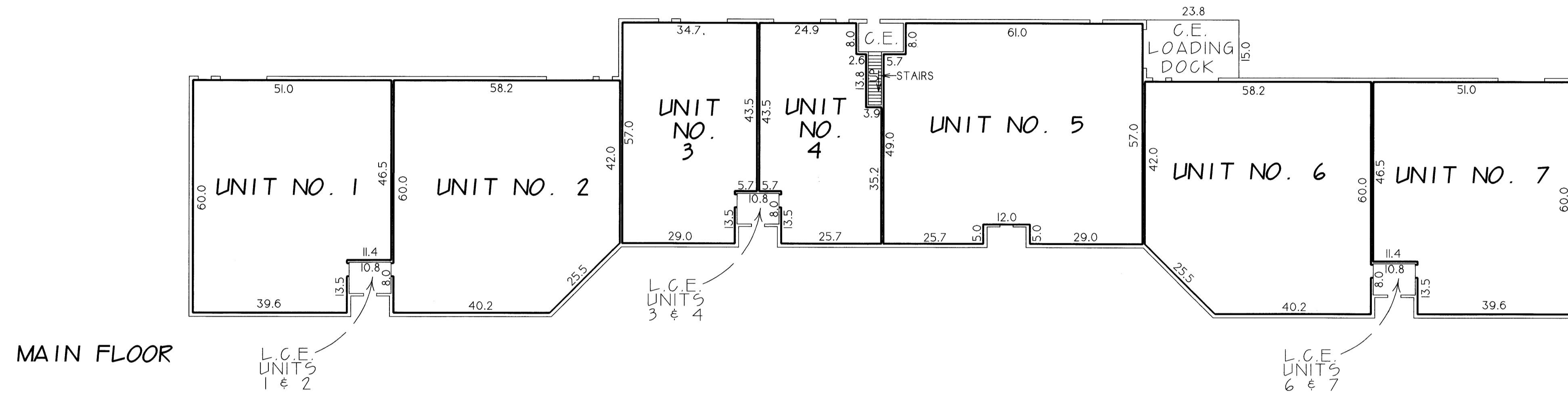


COMMON INTEREST COMMUNITY NO. 97

THORLIND BUILDING, A CONDOMINIUM

OFFICIAL PLAT

Book 4 Page 39
CITY OF BLAINE
COUNTY OF ANOKA
SEC. 27, T. 31, R. 23



ALL DIMENSIONS SHOWN ARE IN FEET AND DECIMALS OF A FOOT

INTERIOR DIMENSIONS SHOWN ARE MEASURED TO INSIDE FACES OF SHEETROCK WALLS.

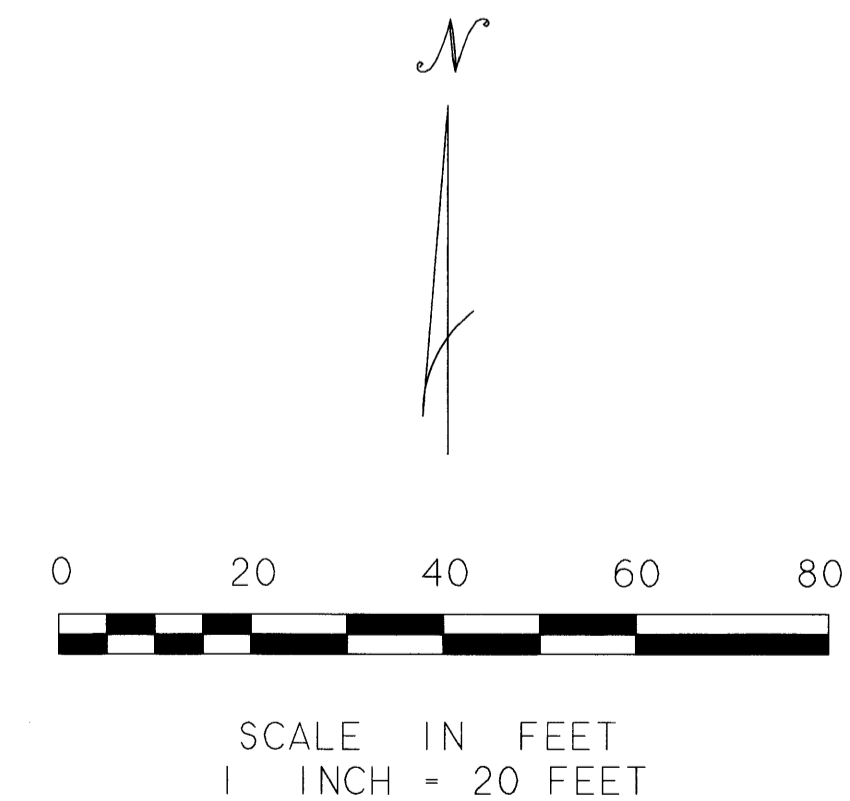
C.E. DENOTES COMMON ELEMENT

L.C.E. DENOTES LIMITED COMMON ELEMENT

NOTE: AIR CONDITIONING UNITS TO BE DESIGNATED AS LIMITED COMMON ELEMENTS ARE LABELED AS "NEED NOT BE BUILT". THEY ARE TO BE LOCATED ON THE ROOFS OF THE UNITS.

ELEVATIONS ARE REFERRED TO THE BENCHMARK AS NOTED ON SHEET 1 OF 2 SHEETS AND ARE SHOWN IN FEET AND DECIMALS OF A FOOT.

ALL UNIT FLOOR ELEVATIONS = 910.0 FEET.
ALL UNIT CEILING ELEVATIONS = 929.4 FEET.



KURTH SURVEYING, INC.

FLOOR PLAN

SHEET 2 OF 2 SHEETS