

# CIC NUMBER 99 A CONDOMINIUM, DURHAM GREEN ELEVENTH SUPPLEMENTAL CIC PLAT

This ELEVENTH SUPPLEMENTAL CIC PLAT is part of the Declaration filed as Document No. 429697 on this 2<sup>nd</sup> day of May, 2003.  
*Nick Whelan, Deputy*  
ANOKA COUNTY RECORDER

CITY OF BLAINE  
COUNTY OF ANOKA  
SEC. 17, TWP. 31, RGE. 23

DRAINAGE AND UTILITY EASEMENTS  
ARE PER PLAT OF CLUB WEST  
AND ARE SHOWN AS THUS:  
(NOT TO SCALE)

I, Terrence E. Rothenbacher, hereby certify that the work was undertaken by or reviewed and approved by me for this ELEVENTH SUPPLEMENTAL CIC Plat of CIC Number 99, A CONDOMINIUM, DURHAM GREEN, being located upon

Lot 1, Block 1, CLUB WEST FOURTH ADDITION, Anoka County, Minnesota, according to the recorded plat thereof;

and the additional real estate is located upon the following described property designated as:

That Part of Lot 1, Block 1, CLUB WEST, according to the recorded plat thereof, Anoka County, Minnesota, lying westerly of a line drawn from a point on the south line of said Lot 1 distant 87.57 feet easterly from the southwest corner of said Lot 1 to a point on the north line of said Lot 1 distant 92.93 feet easterly from the northwest corner of said Lot 1 and said line there terminating.

and

Lots 2 through 6, inclusive, Block 1; and Lots 1 through 6, inclusive, Block 2; CLUB WEST FOURTH ADDITION, Anoka County, Minnesota.

and the CIC Plat fully and accurately depicts all information required by Minnesota Statutes, Section 515B.2-110.

Dated this 9<sup>th</sup> day of April, 2003.

*Terrence E. Rothenbacher*  
Terrence E. Rothenbacher, Land Surveyor  
Minnesota License No. 20595

STATE OF MINNESOTA  
COUNTY OF ANOKA

The foregoing certificate was acknowledged before me this 9<sup>th</sup> day of APRIL, 2003, by BRIAN J. KAYSTEFIAK

*Christopher E. Sharp*  
CHRISTOPHER E. SHARP  
NOTARY PUBLIC  
MY COMM. EXP. 01/31/2005

*Christopher E. Sharp*  
Notary Public, Anoka County, Minnesota  
My Commission Expires January 31, 2005

Checked and approved this 11<sup>th</sup> day of APRIL, 2003.

*Garry D. Shin*  
Anoka County Surveyor

STATE OF MINNESOTA  
COUNTY OF ANOKA

The foregoing certificate was acknowledged before me this 9<sup>th</sup> day of APRIL, 2003, by Terrence E. Rothenbacher, a Licensed Professional Land Surveyor.

*Christopher E. Sharp*  
CHRISTOPHER E. SHARP  
NOTARY PUBLIC  
MY COMM. EXP. 01/31/2005

*Christopher E. Sharp*  
Notary Public, Anoka County, Minnesota  
My Commission Expires January 31, 2005

I, BRIAN J. KAYSTEFIAK pursuant to Minnesota Statutes, Section 515B.2-101(c), do hereby certify that all the units and all structural components and mechanical systems of all buildings containing or comprising any units hereby created, are substantially completed.

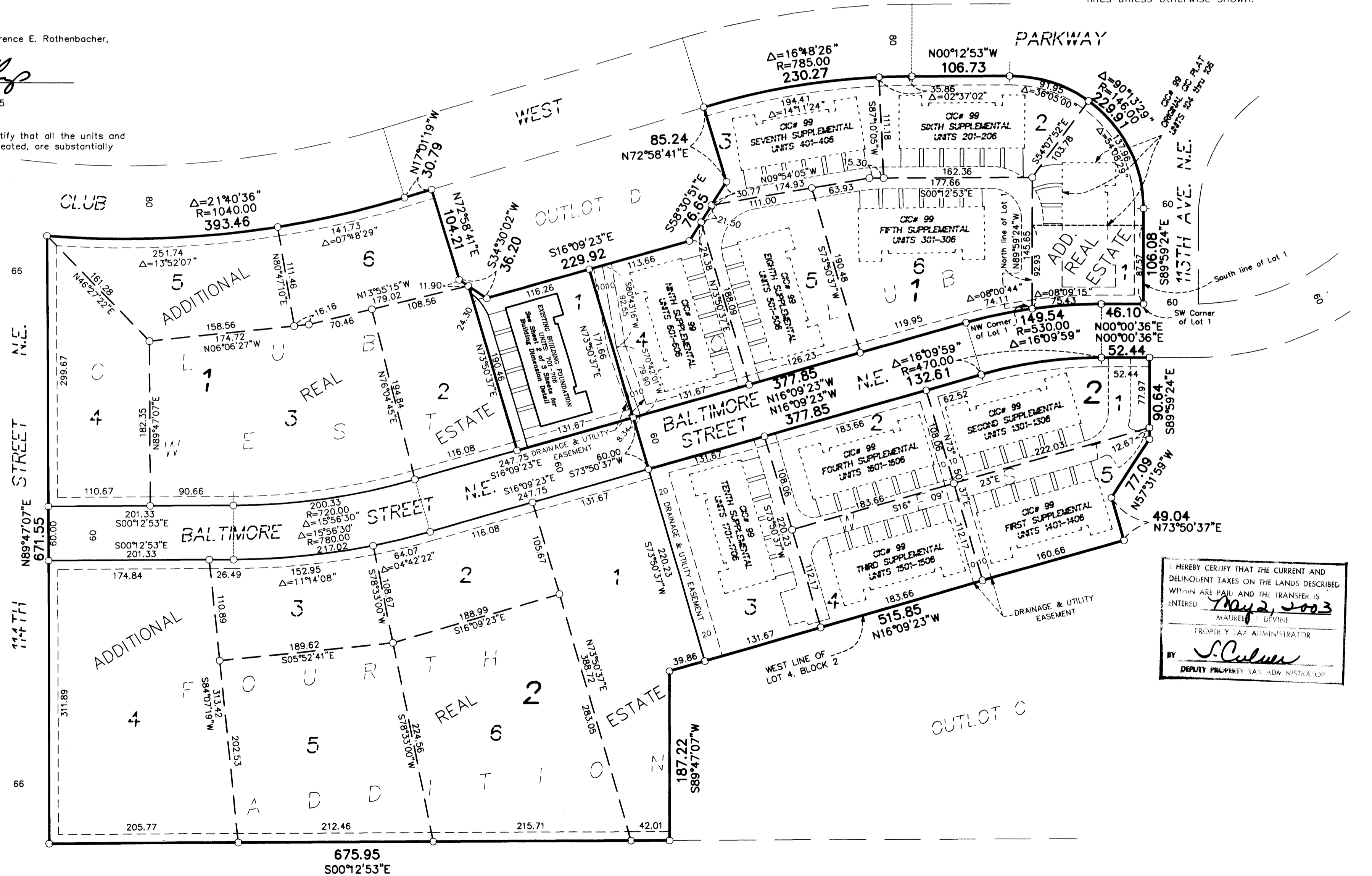
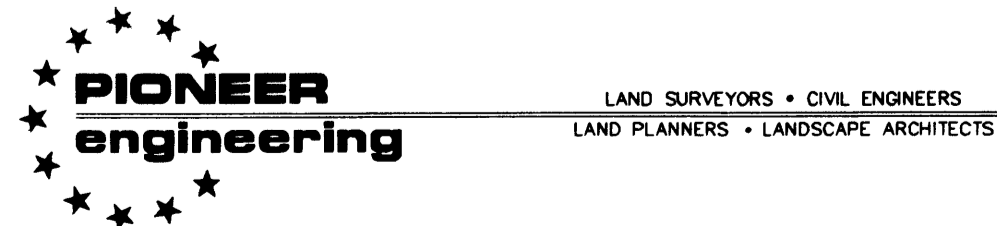
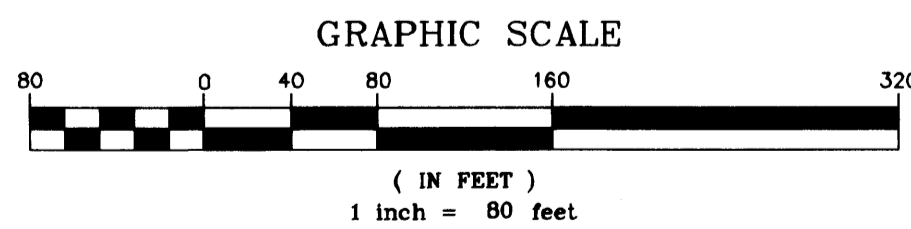
Dated this 9<sup>th</sup> day of APRIL, 2003.

*Brian J. Kaystefiak*  
Registered Professional Engineer  
Minnesota Registration No. 25063

BENCH MARK  
Top nut hydrant ± 400' (FT.) West of Intersection of 113th Avenue NE. & Arnold Palmer Drive on North side of Street.  
Elevation= 905.59 (NGVD 1929)

○ Denotes 1/2 inch by 14 inch iron monument set and marked with license number 20595

For the purposes of this plat, the west line of Lot 4, Block 2, CLUB WEST is assumed to have a bearing of North 16°09'23" West



HEREBY CERTIFY THAT THE CURRENT AND DELINQUENT TAXES ON THE LANDS DESCRIBED WITHIN ARE PAID AND THE TRANSFER IS ENTERED May 2, 2003  
*Maureen D'Vine*  
PROPERTY TAX ADMINISTRATOR  
BY *S. Culver*  
DEPUTY PROPERTY TAX ADMINSTRATOR

SITE PLAN (AS BUILT)

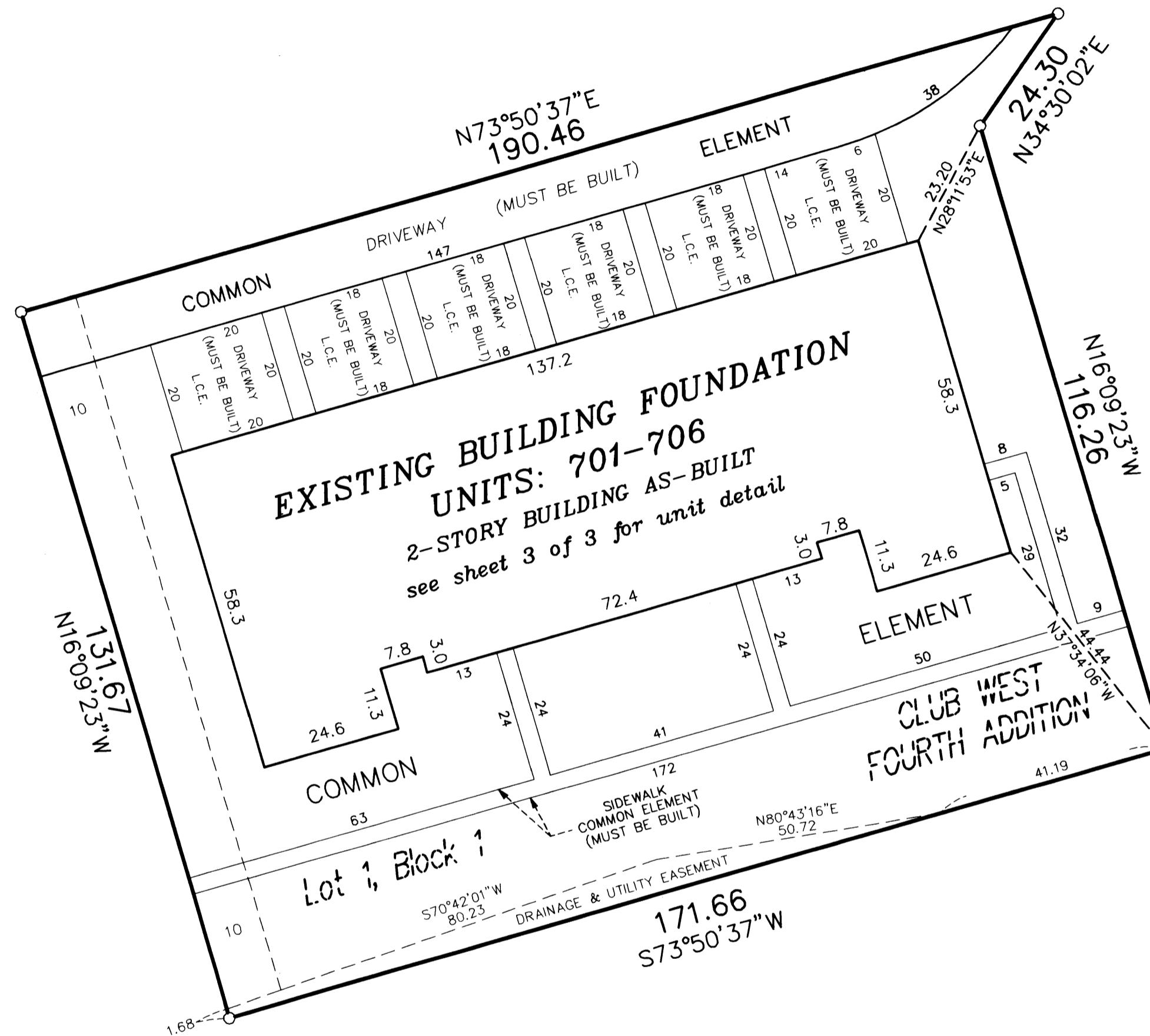
# CIC NUMBER 99

## A CONDOMINIUM, DURHAM GREEN

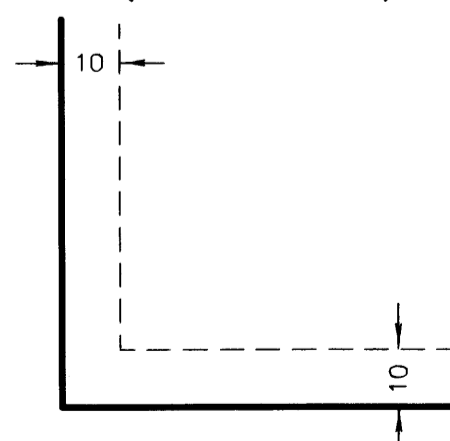
### ELEVENTH SUPPLEMENTAL CIC PLAT

C.R. DOC. NO. 429697

CITY OF BLAINE  
COUNTY OF ANOKA  
SEC. 17, TWP. 31, RGE. 23



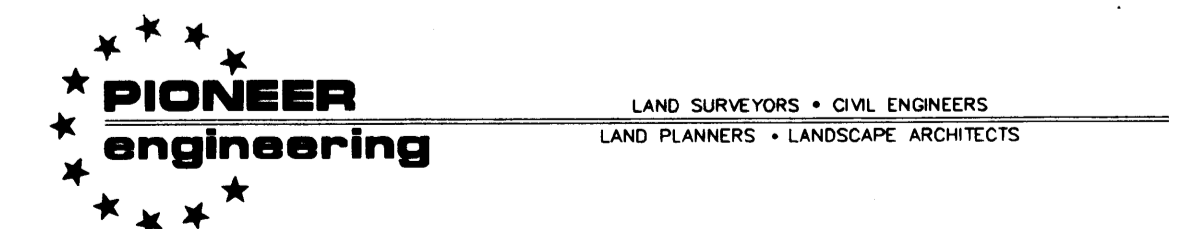
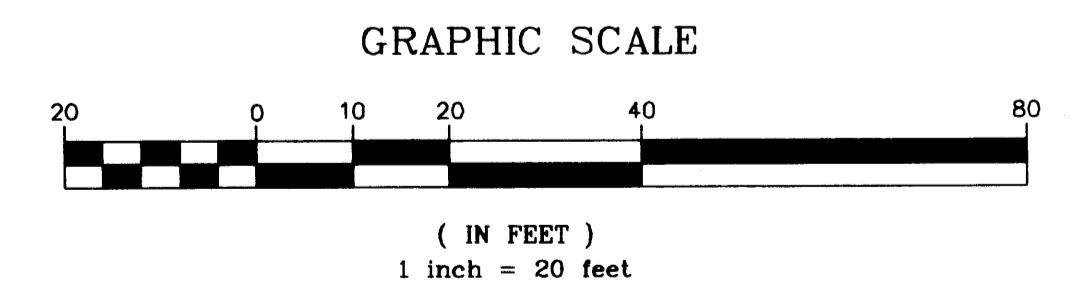
DRAINAGE AND UTILITY EASEMENTS  
ARE PER PLAT OF CLUB WEST  
AND ARE SHOWN AS THUS:  
(NOT TO SCALE)



Being 10 feet in width and adjoining right-of-way lines  
unless otherwise shown.

○ Denotes 1/2 inch by 14 inch iron monument  
set and marked with license number 20595.

For the purposes of this plat, the west line of  
Lot 4, Block 2, CLUB WEST is assumed to have  
a bearing of North 16°09'23" West



2003058999 \$ 312.00

# CIC NUMBER 99

## A CONDOMINIUM, DURHAM GREEN

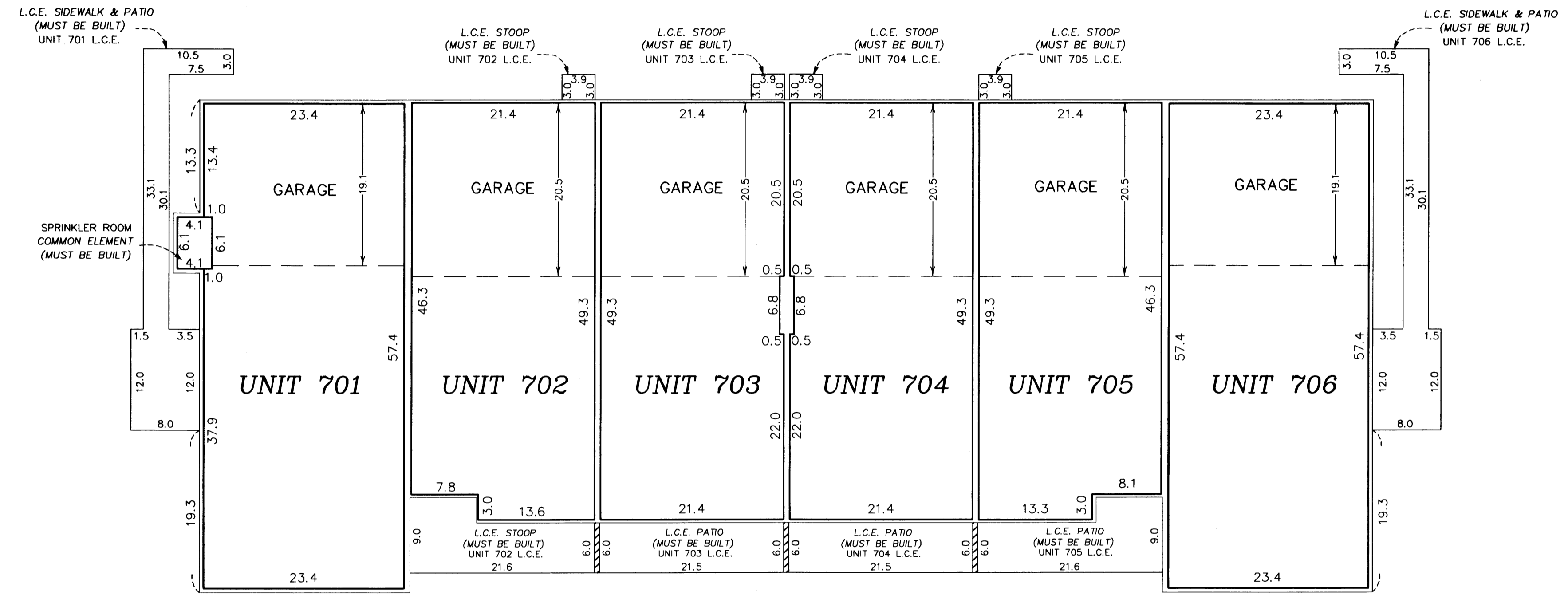
### ELEVENTH SUPPLEMENTAL CIC PLAT

CR DOC. NO. 429697

CITY OF BLAINE  
COUNTY OF ANOKA  
SEC. 17, TWP. 31, RGE. 23

UNIT DETAIL  
(AS-BUILT)

#### LOWER LEVEL



#### Lower Level Elevations

All units garage floor elevation = 896.4 feet  
 All units garage ceiling elevations = 905.9 feet  
 All units main level floor elevations = 896.8 feet  
 All units main level ceiling elevation = 905.9 feet

#### Second Level Elevations

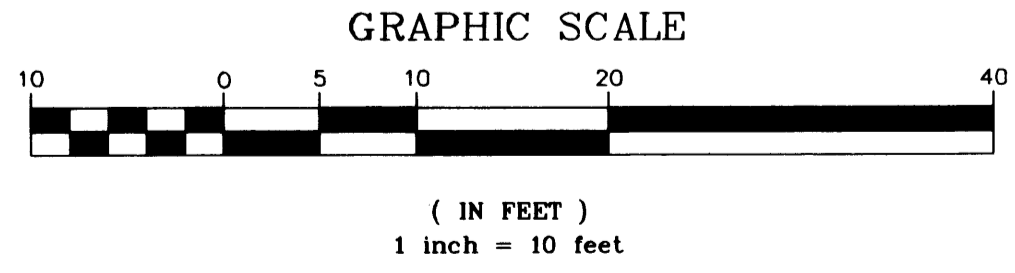
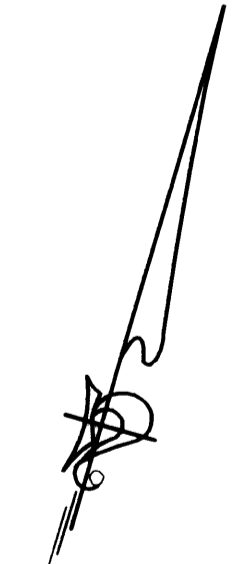
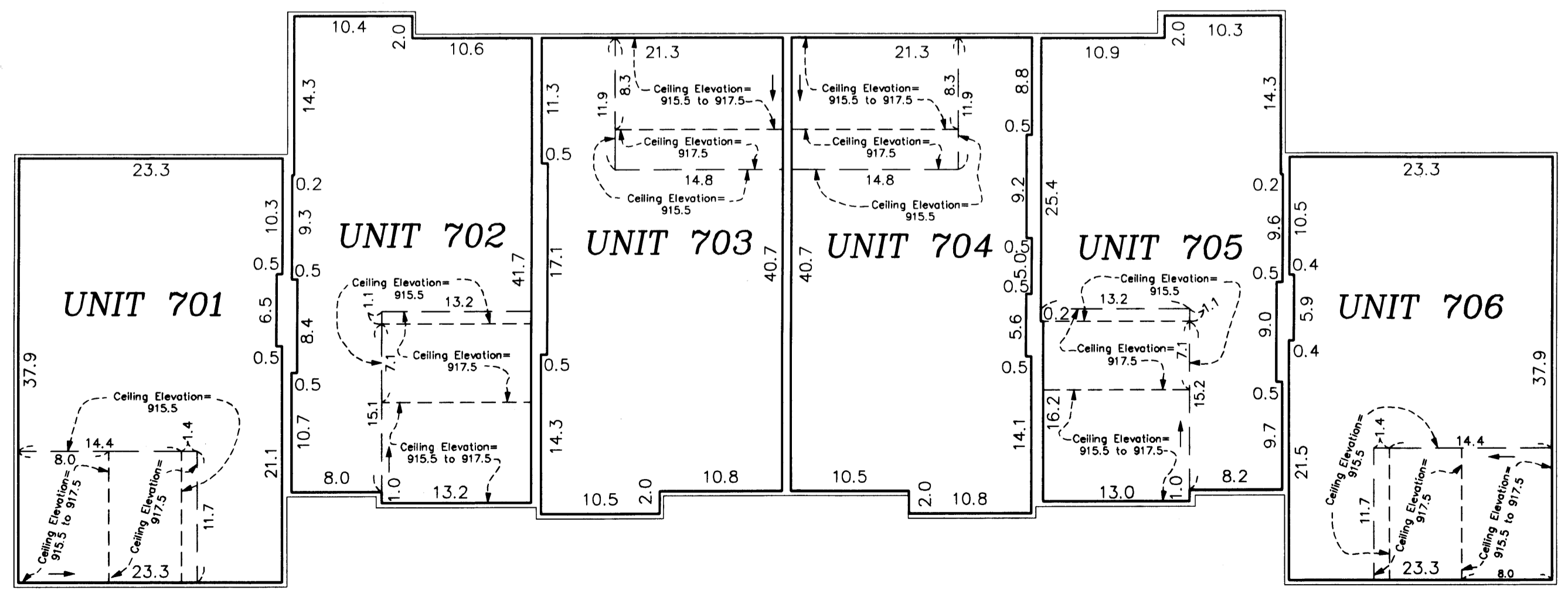
All units upper level floor elevation = 907.4 feet  
 All units upper level ceiling elevation varies from 915.5 feet to 917.5

Elevations are referred to a benchmark as noted on the site plan on Sheet 1 of 3 Sheets and are shown in feet and tenths of a foot.

L.C.E. = Limited Common Element  
 C.E. = Common Element

Interior dimensions shown are measured to the unfinished surface of the walls, floors and ceiling.

#### UPPER LEVEL



**PIONEER engineering**  
 LAND SURVEYORS • CIVIL ENGINEERS  
 LAND PLANNERS • LANDSCAPE ARCHITECTS

2003058999 \$312.00