

OFFICIAL PLAT

CIC NUMBER 99
A CONDOMINIUM, DURHAM GREEN
TWENTY FIRST SUPPLEMENTAL
CIC PLAT

Bk 7 of C10, Pg 1

PROPERTY TAX ADMINISTRATOR
DEPUTY PROPERTY TAX ADMINISTRATOR
BY: J. Culver

This TWENTY FIRST SUPPLEMENTAL CIC PLAT is part of
the Declaration filed as Document No. 46825.0
on this 18th day of May, 2004.
Notary Public, Anoka County, Minnesota

CITY OF BLAINE
COUNTY OF ANOKA
SEC. 17, TWP. 31, RGE. 23

DRAINAGE AND UTILITY EASEMENTS
ARE PER PLAT OF CLUB WEST
AND ARE SHOWN AS THUS:
(NOT TO SCALE)

I, Terrence E. Rothenbacher, hereby certify that the work was undertaken by or reviewed and approved by me for this
TWENTY FIRST SUPPLEMENTAL CIC Plat of CIC Number 99, A CONDOMINIUM, DURHAM GREEN, being located upon

Lot 3, Block 2, CLUB WEST FOURTH ADDITION, according to the recorded plat thereof, Anoka County, Minnesota;

and the additional real estate is located upon the following described property designated as:

Lot 4, Block 2; CLUB WEST FOURTH ADDITION, Anoka County, Minnesota.

and that the CIC Plat fully and accurately depicts all information required by Minnesota Statutes, Section 515B.2-110.

Dated this 23rd day of April, 2004.

Terrence E. Rothenbacher, Land Surveyor
Minnesota License No. 20595

STATE OF MINNESOTA
COUNTY OF ANOKA

The foregoing certificate was acknowledged before me this 23rd day of April, 2004, by
BRIAN J. KRISTOFIAK, a Registered Professional Engineer.

CHRISTOPHER E SHARP
NOTARY PUBLIC
MY COMM. EXP 01/31/2005

Notary Public, Anoka County, Minnesota
My Commission Expires January 31, 2005

Checked and approved this 30th day of APRIL, 2004.

Anoka County Surveyor

STATE OF MINNESOTA
COUNTY OF ANOKA

The foregoing certificate was acknowledged before me this 23rd day of April, 2004, by Terrence E. Rothenbacher,
a Licensed Professional Land Surveyor.

CHRISTOPHER E SHARP
NOTARY PUBLIC
MY COMM. EXP 01/31/2005

Notary Public, Anoka County, Minnesota
My Commission Expires January 31, 2005

I, BRIAN J. KRISTOFIAK pursuant to Minnesota Statutes, Section 515B.2-101(c), do hereby certify that all the units and
all structural components and mechanical systems of all buildings containing or comprising any units hereby created, are substantially
completed.

Dated this 23rd day of April, 2004.

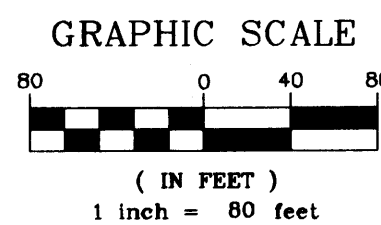
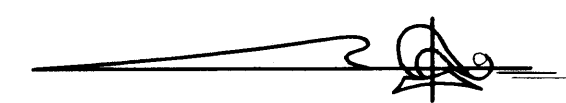
Registered Professional Engineer
Minnesota Registration No. 25063

BENCH MARK

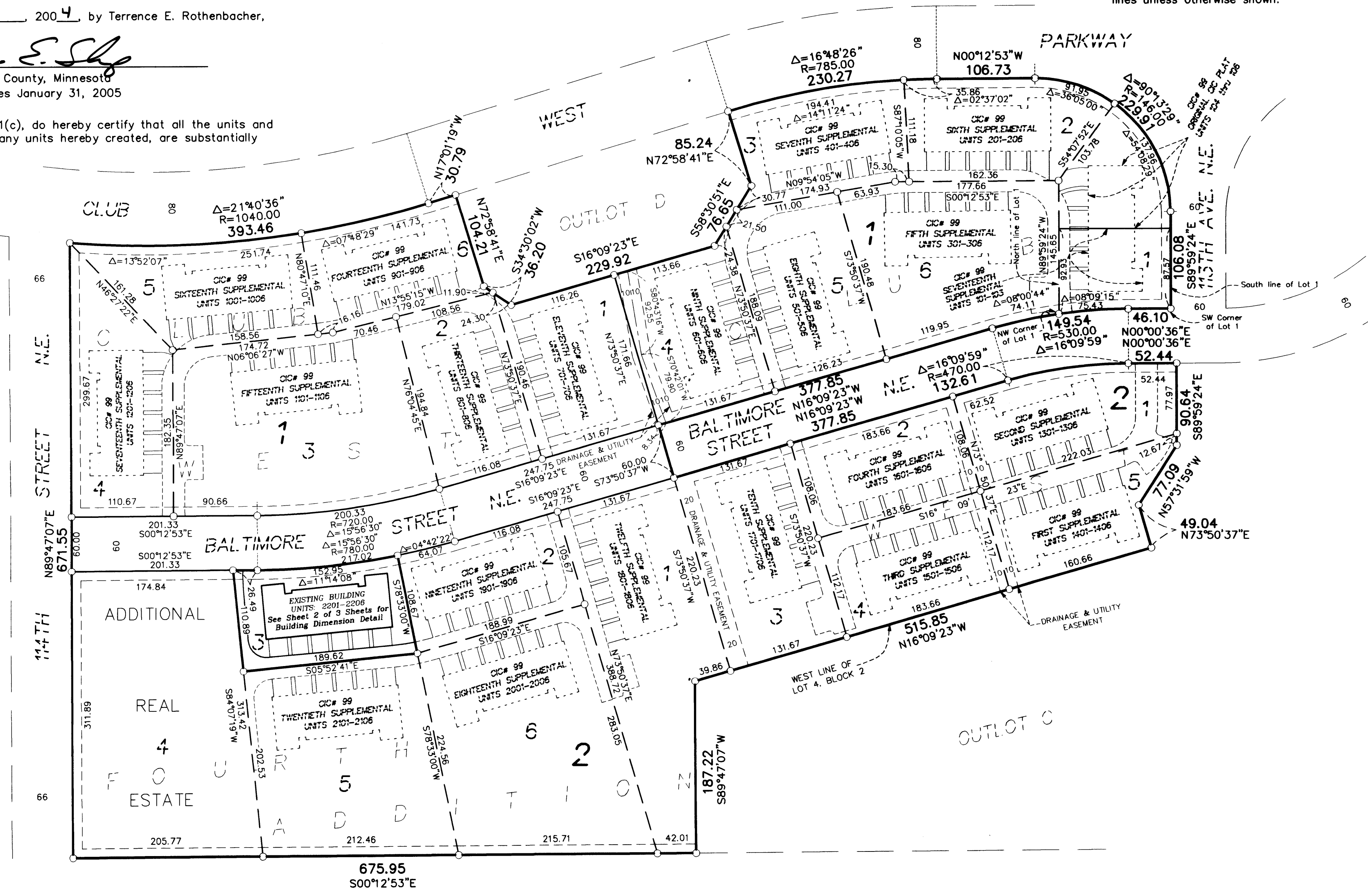
Top nut hydrant ± 400' (FT.) West of Intersection of 113th
Avenue NE. & Arnold Palmer Drive on North side of Street.
Elevation = 905.59 (NGVD 1929)

Denotes 1/2 inch by 14 inch iron monument
set and marked with license number 20595

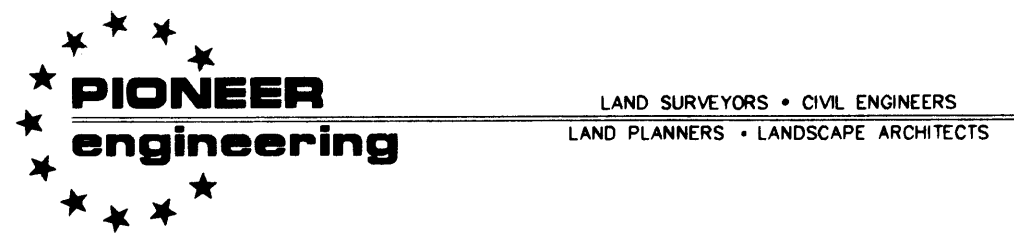
For the purposes of this plat, the west line of
Lot 4, Block 2, CLUB WEST is assumed
to have a bearing of North 16°09'23" West



Office of Registration and
ST. ... 466825.0
COUNTY OF ANOKA
I hereby certify that the information
filed on this day of May 18, 2004
at 9:00 A.M.
Maine ... Registrar of Titles
By: GRS



2004068859 \$297.00



OFFICIAL PLAT

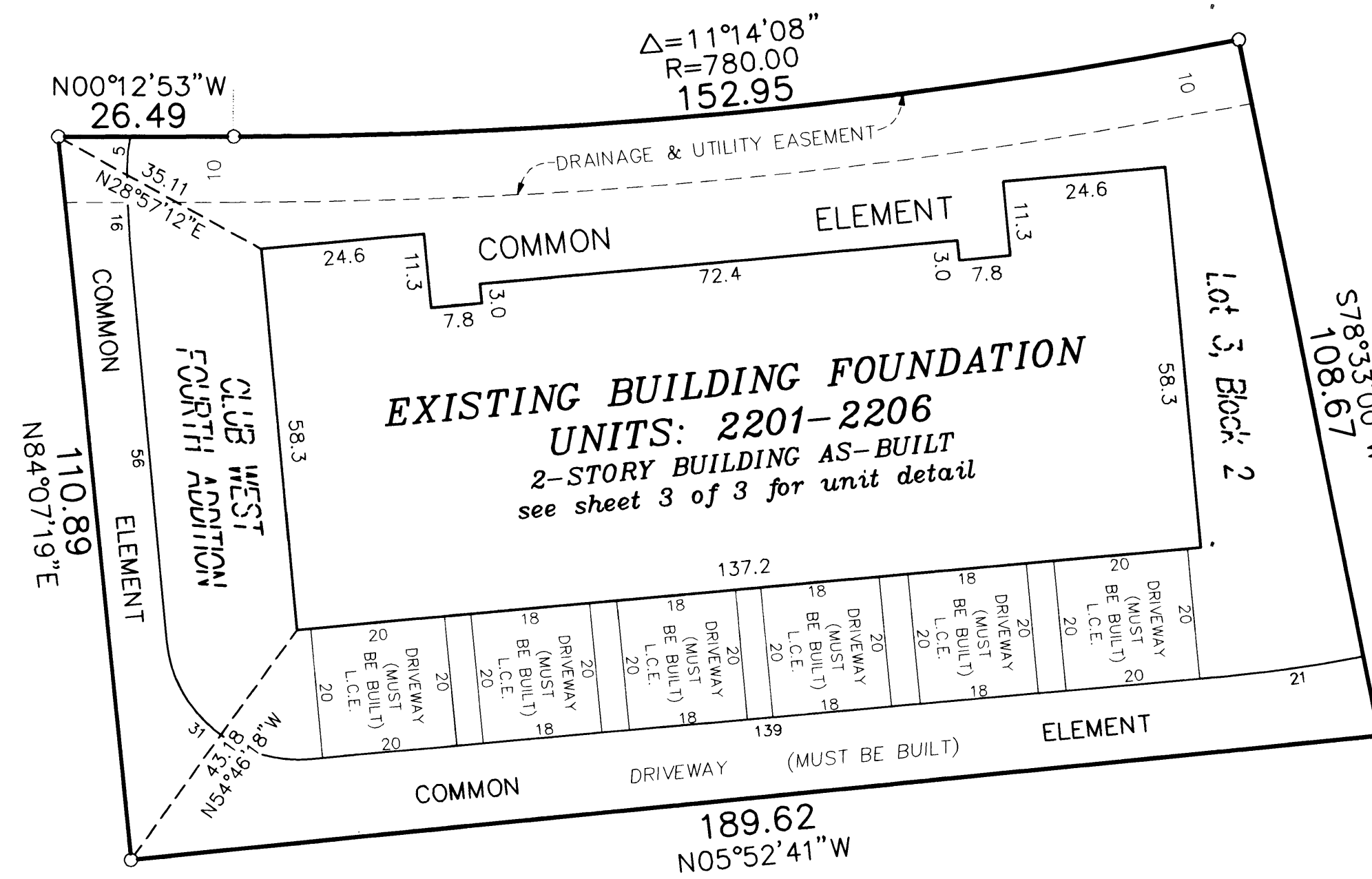
SITE PLAN (AS-BUILT)

BK 7 of CIC, Pg 1

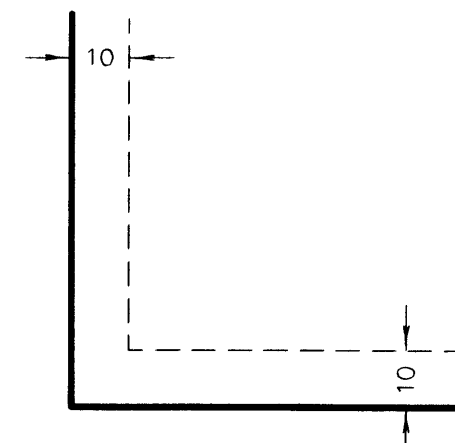
CIC NUMBER 99
A CONDOMINIUM, DURHAM GREEN
TWENTY FIRST SUPPLEMENTAL
CIC PLAT

C.R. DOC. NO. 466825.0

CITY OF BLAINE
COUNTY OF ANOKA
SEC. 17, TWP. 31, RGE. 23



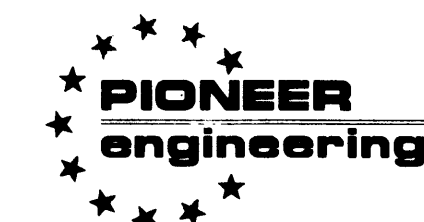
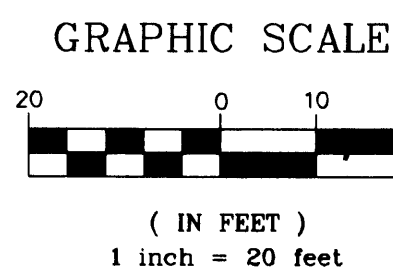
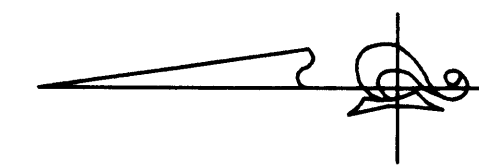
DRAINAGE AND UTILITY EASEMENTS
ARE PER PLAT OF CLUB WEST
AND ARE SHOWN AS THUS:
(NOT TO SCALE)



Being 10 feet in width and adjoining right-of-way lines
unless otherwise shown.

○ Denotes 1/2 inch by 14 inch iron monument
set and marked with license number 20595.

For the purposes of this plat, the west line
of Lot 4, Block 2, CLUB WEST is assumed to
have a bearing of North 16°09'23" West



LAND SURVEYORS • CIVIL ENGINEERS
LAND PLANNERS • LANDSCAPE ARCHITECTS

2004062859 \$297.00

OFFICIAL PLAT
UNIT DETAIL
(AS-BUILT)

BK 7 of CIC, pg 1

CIC NUMBER 99

DURHAM GREEN, A CONDOMINIUM

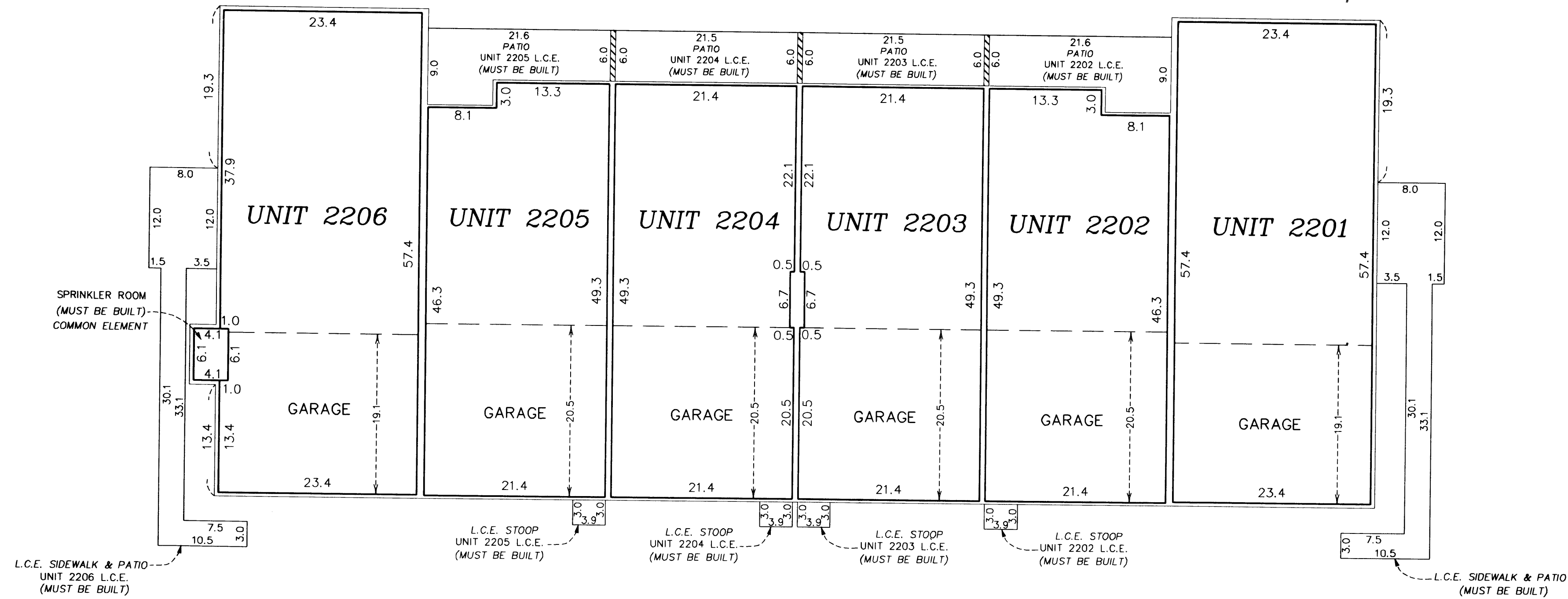
TWENTY FIRST SUPPLEMENTAL

CIC PLAT

CR DOC. NO. 466825.0

CITY OF BLAINE
COUNTY OF ANOKA
SEC. 17, TWP. 31, RGE. 23

LOWER LEVEL



Lower Level Elevations

All units garage floor elevation = 897.0 feet
All units garage ceiling elevations = 906.5 feet
All units main level floor elevations = 897.4 feet
All units main level ceiling elevation = 906.5 feet

Second Level Elevations

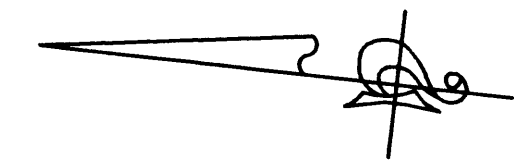
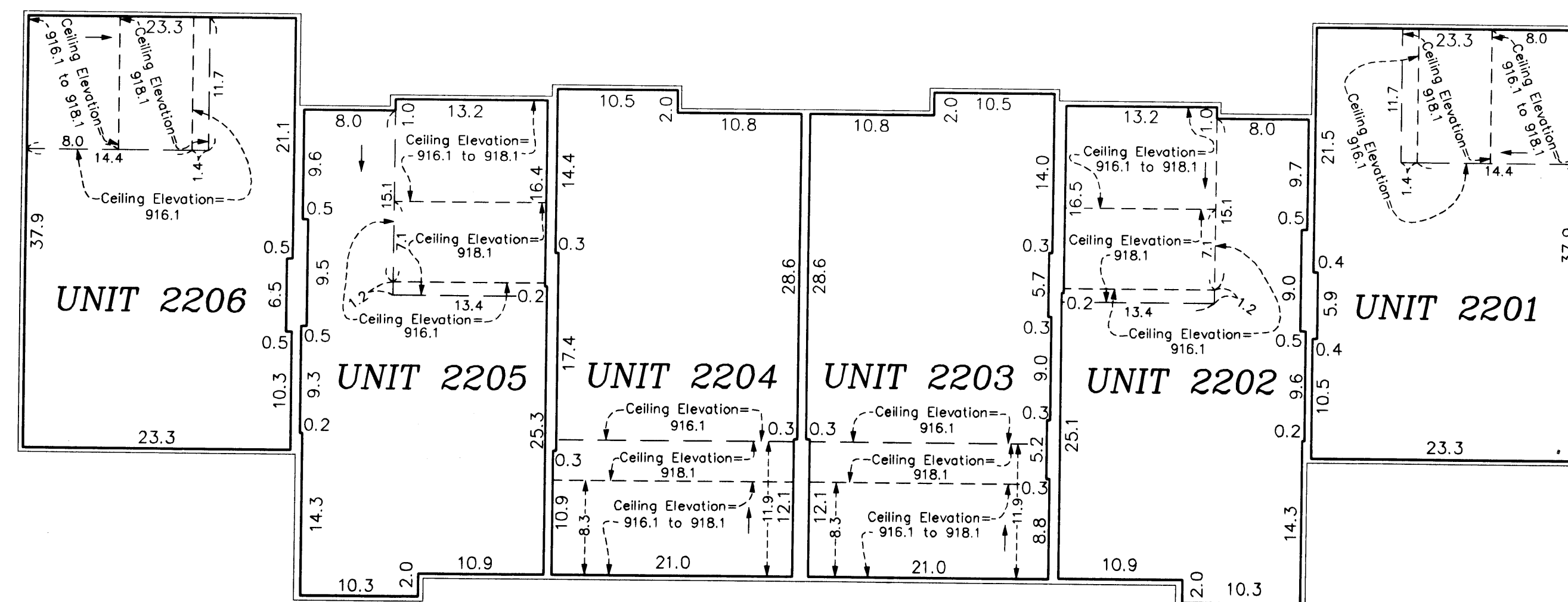
All units upper level floor elevation = 908.0 feet
All units upper level ceiling elevation varies from 916.1 feet to 918.1

Elevations are referred to a benchmark as noted on the site plan on Sheet 1 of 3 Sheets and are shown in feet and tenths of a foot.

L.C.E. = Limited Common Element
C.E. = Common Element

Interior dimensions shown are measured to the unfinished surface of the walls, floors and ceiling.

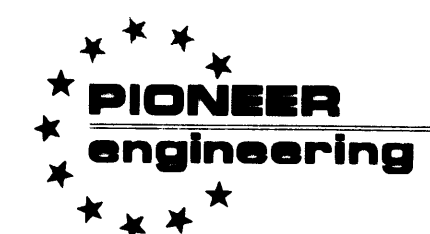
UPPER LEVEL



GRAPHIC SCALE



(IN FEET)
1 inch = 10 feet



LAND SURVEYORS • CIVIL ENGINEERS
LAND PLANNERS • LANDSCAPE ARCHITECTS

2004068859 \$297.00