

CIRCLE PINES - PART 1 EAST

ANOKA COUNTY, MINNESOTA

SCALE: 1"=200' METROPOLITAN LAND SURVEYORS & ENGINEERS, INC.

14193

Office of REGISTRAR OF TITLES
 STATE OF MINNESOTA
 COUNTY OF ANOKA
 I hereby certify that the within instrument
 was filed in this office on AUG 15 1953 day of
August 1953 at 9 o'clock A.M.
Gustave Rasmussen Registrar of Titles
 DEPUTY REGISTRAR OF TITLES

TAXES PAID
 AND TRANSFER ENTERED
 AUG 15 1953
James St. Campbell
 Anoka County
J. Green Deputy

I hereby certify that taxes for the year 1952
 on the lands described within are paid
Walter D. Bowers
 County Treasurer
By: B. Peterson, Deputy

Know all men by these presents that SUBURBAN PROPERTIES, INC., a Minnesota corporation, fee owner and proprietor of the following described property situated in the County of Anoka, State of Minnesota, to wit: All that land lying Northwest of U.S. Highway No. 8, as now laid out and constructed, described as follows: The East one-half (E 1/2) of the East one-half (E 1/2) of the Northwest-Quarter (NW 1/4), the East one-half (E 1/2) of Government Lot 2, and the Northeast-Quarter (NE 1/4), all in Section 25, Township 31 North, Range 23 West, and that part of the Northwest-Quarter (NW 1/4) of the Northwest-Quarter (NW 1/4) of Section 30, Township 31 North, Range 23 West, excepting the Rural Electrification Sub Station Site from that part of the Southeast-Quarter (SE 1/4) of the Northwest-Quarter (NW 1/4), and the Southwest-Quarter (SW 1/4) of the Northeast-Quarter (NE 1/4) of Section 25, Township 31 North, Range 23 West, described as follows: Commencing at a point on the West Section line of said Section 25, distant 1170.99 feet North of the Southwest section corner thereof; thence deflect to the right on an angle of 58° 10' 00", for 3095.93 feet to the point of beginning of the property to be described; thence deflect 0° 0' 00", a distance of 130.0 feet; thence deflect to the left on an angle of 90° 00' 00", a distance of 85.0 feet; thence deflect to the left on an angle of 90° 00' 00", a distance of 130.0 feet; thence deflect to the left on an angle of 90° 00' 00", a distance of 85.0 feet to the point of beginning and there terminating, reserving therefrom easements for public utilities use, such as setting of poles, trimming of trees, stringing of wires or for laying of underground conduit; have caused the same to be surveyed and platted as CIRCLE PINES - PART 1 EAST and do hereby donate and dedicate to the public for public use forever the Roads, Drives, Parks, School Area, easements, and unimproved walkways as shown on the annexed plat. In witness whereof we have hereunto set our hands and seals this 11th day of August 1953 A.D.

Recommended for approval this 11th day of August 1953 A.D.
Joseph N. Sullivan
 Village Engineer, Circle Pines, Minnesota

The annexed plat of CIRCLE PINES - PART 1 EAST was approved and accepted by the Village Council of the Village of Circle Pines, Minnesota, at a regular meeting thereof held this 11th day of August 1953 A.D.

VILLAGE COUNCIL, CIRCLE PINES, MINNESOTA
Michael J. Miller Mayor
Andrew Baber Clerk

IN THE PRESENCE OF:
Marilyn E. Beise
Elmer S. Gail
 SUBURBAN PROPERTIES, INC.
James Wyatt President
Julius Segal Secretary

STATE OF MINNESOTA s.s.
 COUNTY OF HENNEPIN
 On this 11th day of August, 1953 A.D., before me a notary public, within and for said County and State, personally appeared JAMES R. WYATT and JULIUS SEGAL, to me personally known, who, being by me, each duly sworn, did say that they are, respectively, the President and Secretary of SUBURBAN PROPERTIES, INC., the corporation named in the foregoing instrument; that the seal affixed to said instrument is the corporation seal of said corporation; and that said instrument was signed and sealed in behalf of said corporation, by authority of its Board of Directors and said JAMES R. WYATT and JULIUS SEGAL acknowledge said instrument to be the free act and deed of said corporation.

Marilyn E. Beise
 Notary Public, Hennepin County, Minn.
 My Commission Expires March 5, 1957

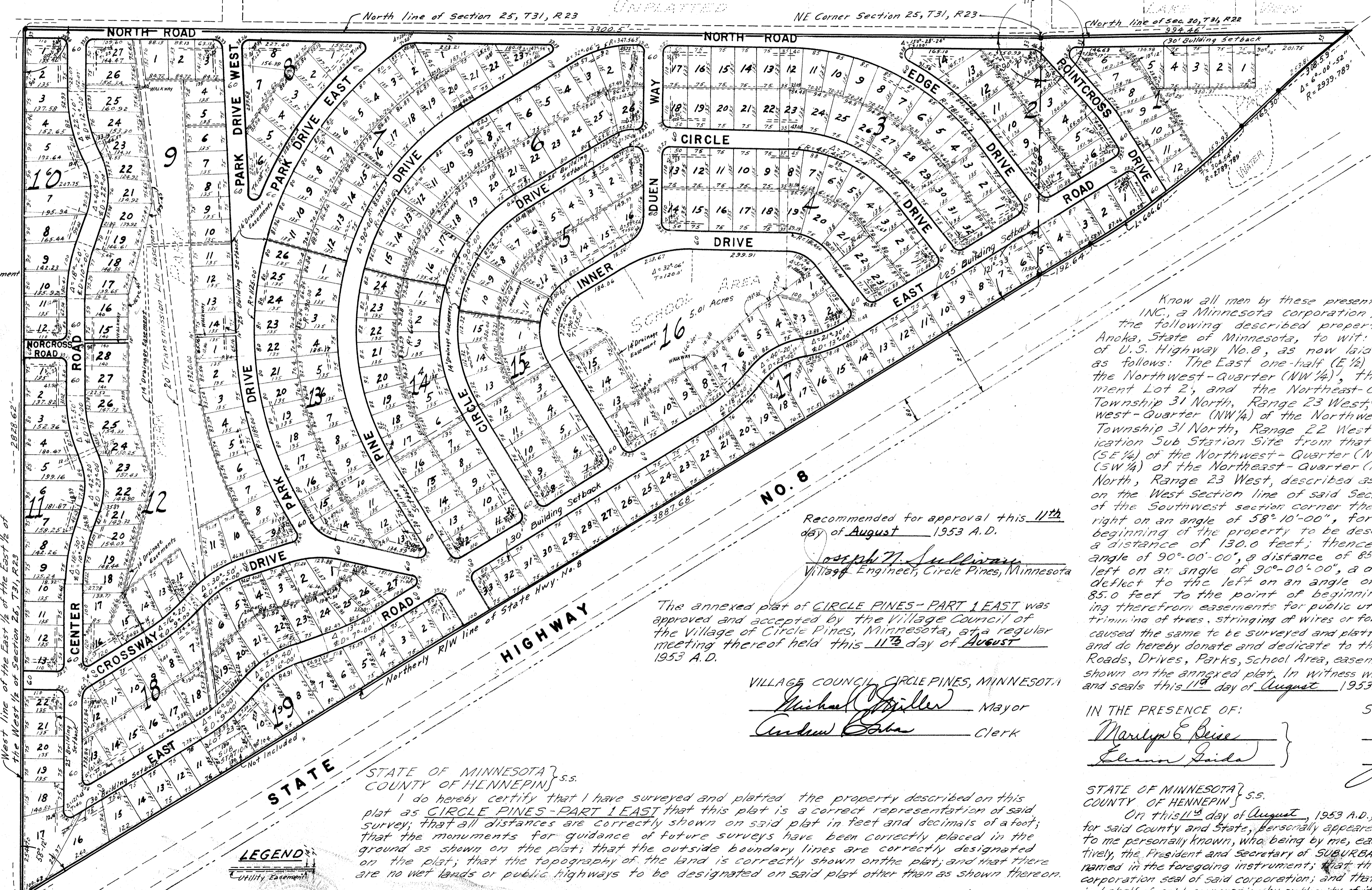
Surveyor: Donald D. Kingsley
 Minnesota Registration No. 3105
Roland W. Anderson
 Notary Public, Hennepin County, Minnesota
 My Commission Expires June 9, 1960

STATE OF MINNESOTA s.s.
 COUNTY OF HENNEPIN
 I do hereby certify that I have surveyed and platted the property described on this plat as CIRCLE PINES - PART 1 EAST that this plat is a correct representation of said survey; that all distances are correctly shown on said plat in feet and decimals of a foot; that the monuments for guidance of future surveys have been correctly placed in the ground as shown on the plat; that the outside boundary lines are correctly designated on the plat; that the topography of the land is correctly shown on the plat; and that there are no wet lands or public highways to be designated on said plat other than as shown thereon.

STATE OF MINNESOTA s.s.
 COUNTY OF HENNEPIN
 Above certificate subscribed and sworn to, before me, a notary public in and for said County and State on this 11th day of August 1953 A.D.
Roland W. Anderson
 Notary Public, Hennepin County, Minn.
 My Commission Expires June 9, 1960

LEGEND
 Utility Easement

All easements shown on the annexed plat are utility easements except where noted.



• Denotes Iron Monument

West line of the East 1/2 of the East 1/2 of the West 1/2 of Section 25, T31, R23

STATE

HIGHWAY

NO. 8

UNPLATTED

North line of Section 25, T31, R23

NE Corner Section 25, T31, R23

North line of Sec. 30, T31, R22

NORTH ROAD

NORTH ROAD

CIRCLE DRIVE

DRIVE

EDGE DRIVE

POINTCROSS ROAD

PARK DRIVE WEST

PARK DRIVE EAST

DUANE WAY

INNER

EAST

NORCROSS ROAD

CROSSWAY

DRIVE

ROAD

DRIVE

ROAD

DRIVE

ROAD

DRIVE

ROAD

DRIVE

ROAD

DRIVE

ROAD

DRIVE

ROAD

DRIVE

ROAD

DRIVE

ROAD

UTILITY EASEMENT

UTILITY EASEMENT

UTILITY EASEMENT

UTILITY EASEMENT

UTILITY EASEMENT

UTILITY EASEMENT

UTILITY EASEMENT

UTILITY EASEMENT

UTILITY EASEMENT

UTILITY EASEMENT

UTILITY EASEMENT

UTILITY EASEMENT

UTILITY EASEMENT

UTILITY EASEMENT

UTILITY EASEMENT

UTILITY EASEMENT

UTILITY EASEMENT

UTILITY EASEMENT

UTILITY EASEMENT

UTILITY EASEMENT

UTILITY EASEMENT

UTILITY EASEMENT

UTILITY EASEMENT

UTILITY EASEMENT

UTILITY EASEMENT

UTILITY EASEMENT

UTILITY EASEMENT

UTILITY EASEMENT

UTILITY EASEMENT

UTILITY EASEMENT

UTILITY EASEMENT

UTILITY EASEMENT

UTILITY EASEMENT

UTILITY EASEMENT

UTILITY EASEMENT

UTILITY EASEMENT

UTILITY EASEMENT

UTILITY EASEMENT

UTILITY EASEMENT

UTILITY EASEMENT

UTILITY EASEMENT

UTILITY EASEMENT

UTILITY EASEMENT

UTILITY EASEMENT

UTILITY EASEMENT

UTILITY EASEMENT

UTILITY EASEMENT

UTILITY EASEMENT

UTILITY EASEMENT

UTILITY EASEMENT

UTILITY EASEMENT

UTILITY EASEMENT

UTILITY EASEMENT

UTILITY EASEMENT

UTILITY EASEMENT

UTILITY EASEMENT

UTILITY EASEMENT