

CLASSIC COMMERCIAL PARK 4TH ADDITION

City of East Bethel
County of Anoka
SEC. 32, TWP. 33, RNG. 23

KNOW ALL PERSONS BY THESE PRESENTS: That CD Properties North, LLC, a Minnesota limited liability company, owner of the following described property:

OUTLOT A, CLASSIC COMMERCIAL PARK 3RD ADDITION, Anoka County, Minnesota.

Has caused the same to be surveyed and platted as CLASSIC COMMERCIAL PARK 4TH ADDITION.

In witness whereof said CD Properties North, LLC, a Minnesota limited liability company, has caused these presents to be signed by its proper officer this 21st day of MARCH, 2021.

CD PROPERTIES NORTH, LLC
Chris A Strandlund as Chief Manager
CHRIS A STRANDLUND (Print)

STATE OF MINNESOTA
COUNTY OF ANOKA

This instrument was acknowledged before me this 21st day of MARCH, 2021 by CHRIS A STRANDLUND as CHIEF MANAGER of CD Properties North, LLC, a Minnesota limited liability company.

Kristin J Erickson (Signature)
KRISTIN J ERICKSON (Print)
Notary Public, ANOKA County, Minnesota
My Commission Expires JANUARY 31, 2023

I, Jason E. Rud do hereby certify that this plat was prepared by me or under my direct supervision; that I am a duly Licensed Land Surveyor in the State of Minnesota; that this plat is a correct representation of the boundary survey; that all mathematical data and labels are correctly designated on this plat; that all monuments depicted on this plat have been, or will be correctly set within one year; that all water boundaries and wet lands, as defined in Minnesota Statutes, Section 505.01, Subd. 3, as of the date of this certificate are shown and labeled on this plat; and all public ways are shown and labeled on this plat.

Dated this 24th day of FEBRUARY, 2021
Jason E. Rud
Jason E. Rud, Licensed Land Surveyor
Minnesota License No. 41578

STATE OF MINNESOTA
COUNTY OF ANOKA

This instrument was acknowledged before me this 21st day of FEBRUARY, 2021 by Jason E. Rud.

Lalae Mack (Signature)
Lalae Mack (Print)
Notary Public, ANOKA County, Minnesota
My Commission Expires JANUARY 31, 2023

CITY COUNCIL, CITY OF EAST BETHEL, MINNESOTA

This plat of CLASSIC COMMERCIAL PARK 4TH ADDITION was approved and accepted by the City Council of the City of East Bethel, Minnesota at a regular meeting thereof held this 8th day of MARCH, 2021, and said plat is in compliance with the provisions of Minnesota Statutes, Section 505.03, Subd. 2.

City Council, City of East Bethel, Minnesota

By [Signature] Mayor By Jack Davis Clerk

COUNTY SURVEYOR

I hereby certify that in accordance with Minnesota Statutes, Section 505.021, Subd 11, this plat has been reviewed and approved this 15th day of March, 2021.

Charles F. Gitzen
Charles F. Gitzen
Anoka County Surveyor

COUNTY AUDITOR/TREASURER

Pursuant to Minnesota Statutes, Section 505.021, Subd. 9, taxes payable in the year 2021 on the land hereinbefore described have been paid. Also, pursuant to Minnesota Statutes, Section 272.12, there are no delinquent taxes and transfer entered this 15th day of March, 2021.

Pamela J. LaBlanc
Property Tax Administrator
By Dorothy G. Wolf Deputy

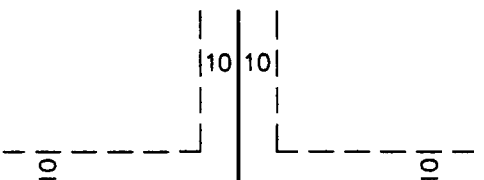
COUNTY RECORDER/REGISTRAR OF TITLES

County of Anoka, State of Minnesota

I hereby certify that this plat of CLASSIC COMMERCIAL PARK 4TH ADDITION was filed in the office of the County Recorder/Registrar of Titles for public record on this 15th day of March, 2021, at 12:21 o'clock P.M. and was duly recorded as Document Number 2308258.001

Pamela J. LaBlanc
County Recorder/Registrar of Titles
By Dorothy G. Wolf Deputy

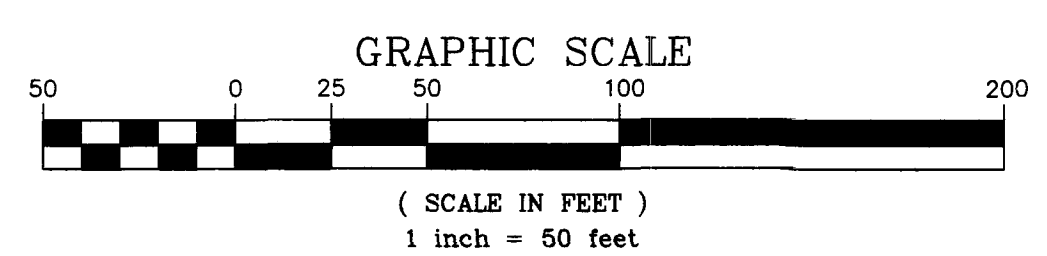
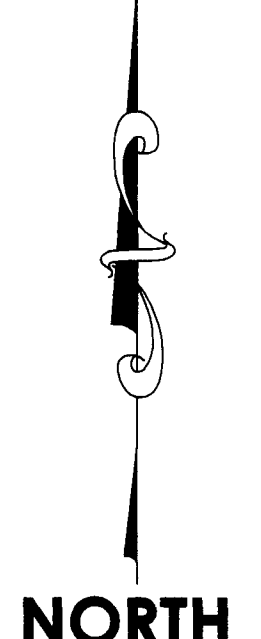
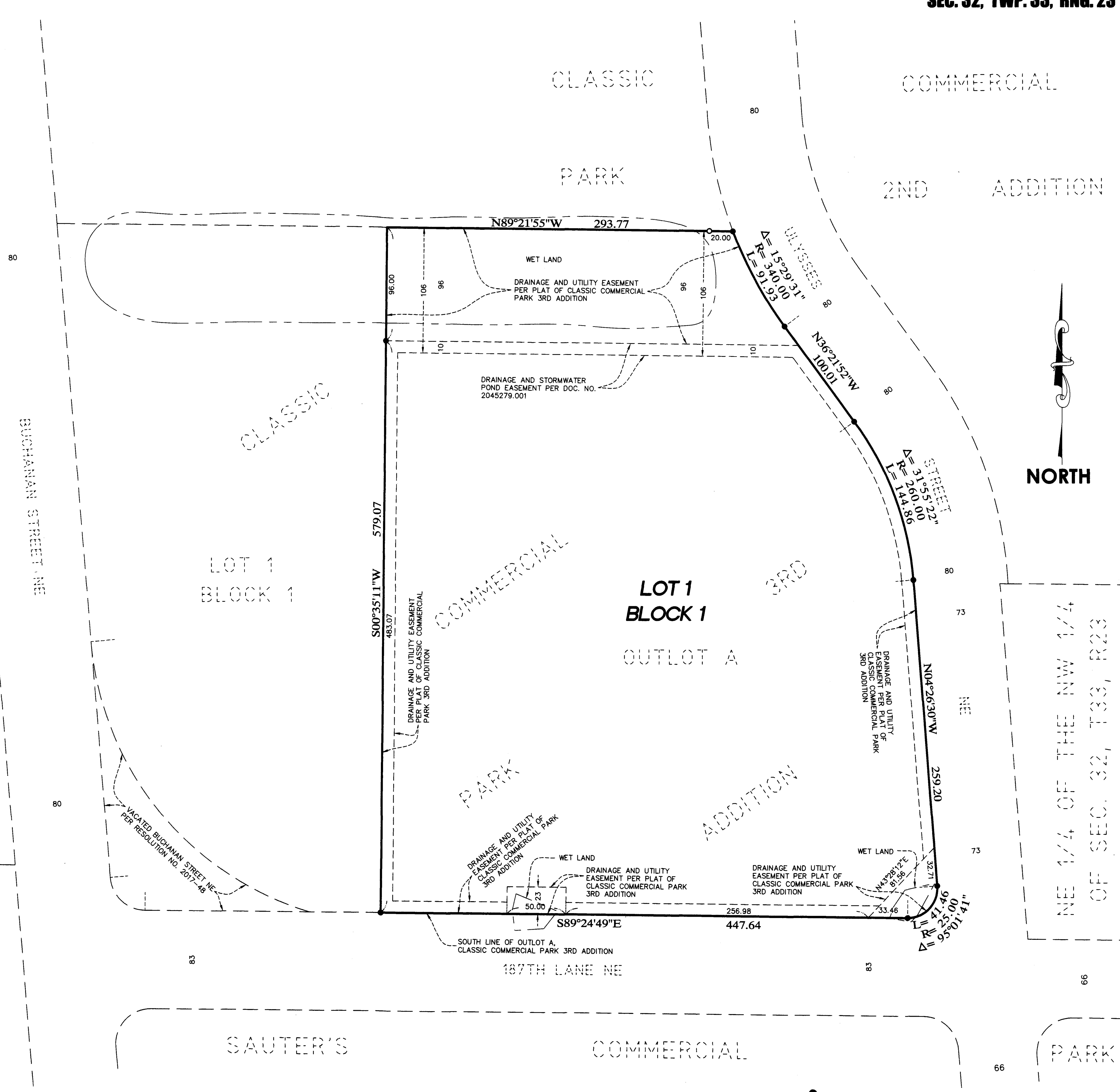
DRAINAGE AND UTILITY EASEMENTS ARE SHOWN THUS:



BEING 10 FEET IN WIDTH, AND ALL LOT LINES AND RIGHT OF WAY LINES, UNLESS OTHERWISE SHOWN ON THIS PLAT.

- DENOTES SET 1/2 INCH BY 14 INCH IRON PIPE MARKED BY RLS NO. 41578.
- DENOTES FOUND 3/4 INCH BY 14 INCH IRON PIPE MARKED BY RLS NO. 41578.

FOR THE PURPOSES OF THIS PLAT THE SOUTH LINE OF OUTLOT A, CLASSIC COMMERCIAL PARK 3RD ADDITION, IS ASSUMED TO HAVE A BEARING OF SOUTH 89 DEGREES 24 MINUTES 49 SECONDS EAST.



E.G. RUD & SONS, INC.
EST. 1977 Professional Land Surveyors
#56.00