

# CLEARVIEW HEIGHTS

## - ADDITION -

### SPRING LAKE PARK

ANOKA COUNTY, MINNESOTA

SE 1/4 - NW 1/4 - SE 1/4 AND  
SOUTH 5 ACRES W 1/2 - NW 1/4 - SE 1/4,  
SEC. 2 - 30 - 24

## DEDICATION

KNOW ALL MEN BY THESE PRESENTS that we, William C. Thomas and Ruth G. Thomas, husband and wife, as owners and proprietors of the following described property situated in the County of Anoka, and State of Minnesota, to wit:

The Southeast Quarter of Northwest Quarter of Southeast Quarter (SE 1/4 of NW 1/4 of SE 1/4), and the South Five (5) Acres of the West Half of Northwest Quarter of Southeast Quarter (South 5 Acres of W 1/2 of NW 1/4 of SE 1/4), of Section Two (2), Township Thirty (30), Range Twenty-four (24),

have caused the same to be surveyed and platted as "CLEARVIEW HEIGHTS ADDITION TO SPRING LAKE PARK," and do hereby donate and dedicate to the public and for the public use forever the Avenues, Streets and Roads, and the Easements shown on the plat for public utility and drainage purposes across the rear five (5) feet of each platted lot, as shown on the annexed plat.

IN WITNESS WHEREOF, we have hereunto set our hands and seals this 18 day of April, 1955, A.D.

In presence of:  
Jesse Rishard  
William C. Thomas  
Ruth G. Thomas

STATE OF MINNESOTA ss  
COUNTY OF ANOKA  
On this 18 day of April, 1955, before me a Notary Public within and for said County, personally appeared William C. Thomas and Ruth G. Thomas, husband and wife, to me known to be the persons described in, and who executed the foregoing instrument and acknowledged that they executed the same as their free act and deed.

J. D. Marshall  
Notary Public, Anoka County, Minnesota  
My commission expires

STATE OF MINNESOTA  
COUNTY OF ANOKA  
VILLAGE OF SPRING LAKE PARK

We hereby certify that the Village Council of the Village of Spring Lake Park, Anoka County, Minnesota, duly accepted the annexed plat of "Clearview Heights Addition to Spring Lake Park" at a regular meeting thereof held this 18 day of April, 1955, A.D.

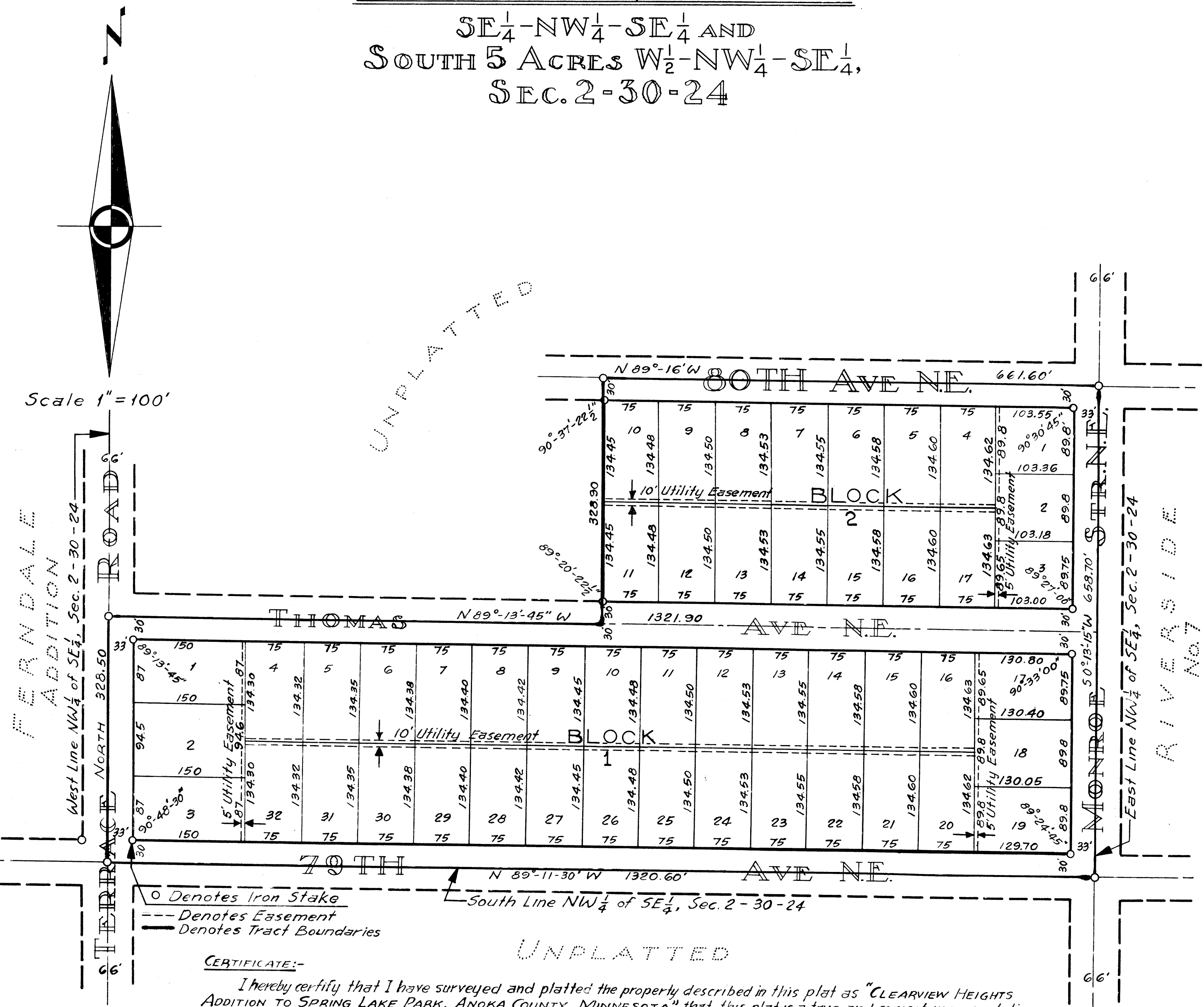
I HEREBY CERTIFY THAT TAXES FOR THE YEAR 1954 ON THE LANDS DESCRIBED WITHIN ARE PAID  
Shelton Bowers County Treasurer  
Stanley W. Dahlman Mayor  
H.M. Roberts by Virginia Roberts Clerk Deputy Clerk

TAXES PAID

This 18 day of May 1955  
Kenneth H. Campbell  
Auditor, Anoka County, Minn.  
Byrd Curtright, Deputy

163849

OFFICE OF REGISTER OF DEEDS  
STATE OF MINNESOTA, COUNTY OF ANOKA } ss  
I hereby certify that this instrument was filed in this office for record on the 18 day of MAY 14 1955 at 10 o'clock A.M. and was duly recorded in book 1 of Plats, page 2  
Garrett Minnesota  
Register of Deeds



CERTIFICATE:-  
I hereby certify that I have surveyed and platted the property described in this plat as "CLEARVIEW HEIGHTS ADDITION TO SPRING LAKE PARK, ANOKA COUNTY, MINNESOTA," that this plat is a true and correct representation of said survey, that all distances are correctly shown on the plat in feet and decimals of a foot, that the monuments for the guidance of future surveys have been correctly placed in the ground as shown on the plat, that the outside boundary lines are correctly designated on the plat, that the topography of the land is correctly shown on the plat and that there are no wet lands or public highways to be designated on the plat other than as shown thereon.  
Russell T. Russell  
Registered Land Surveyor - Reg No 4664

Above certificate subscribed and sworn to before me this 18 day of April AD 1955.  
Notary Public, Anoka County, Minnesota.  
My commission expires  
DARRAH CUTLER  
Notary Public, Anoka County, Minn.  
My Commission Expires April 10, 1960.