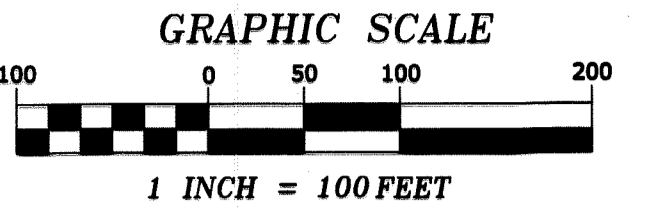


CLIFFS BOETTCHER ESTATES

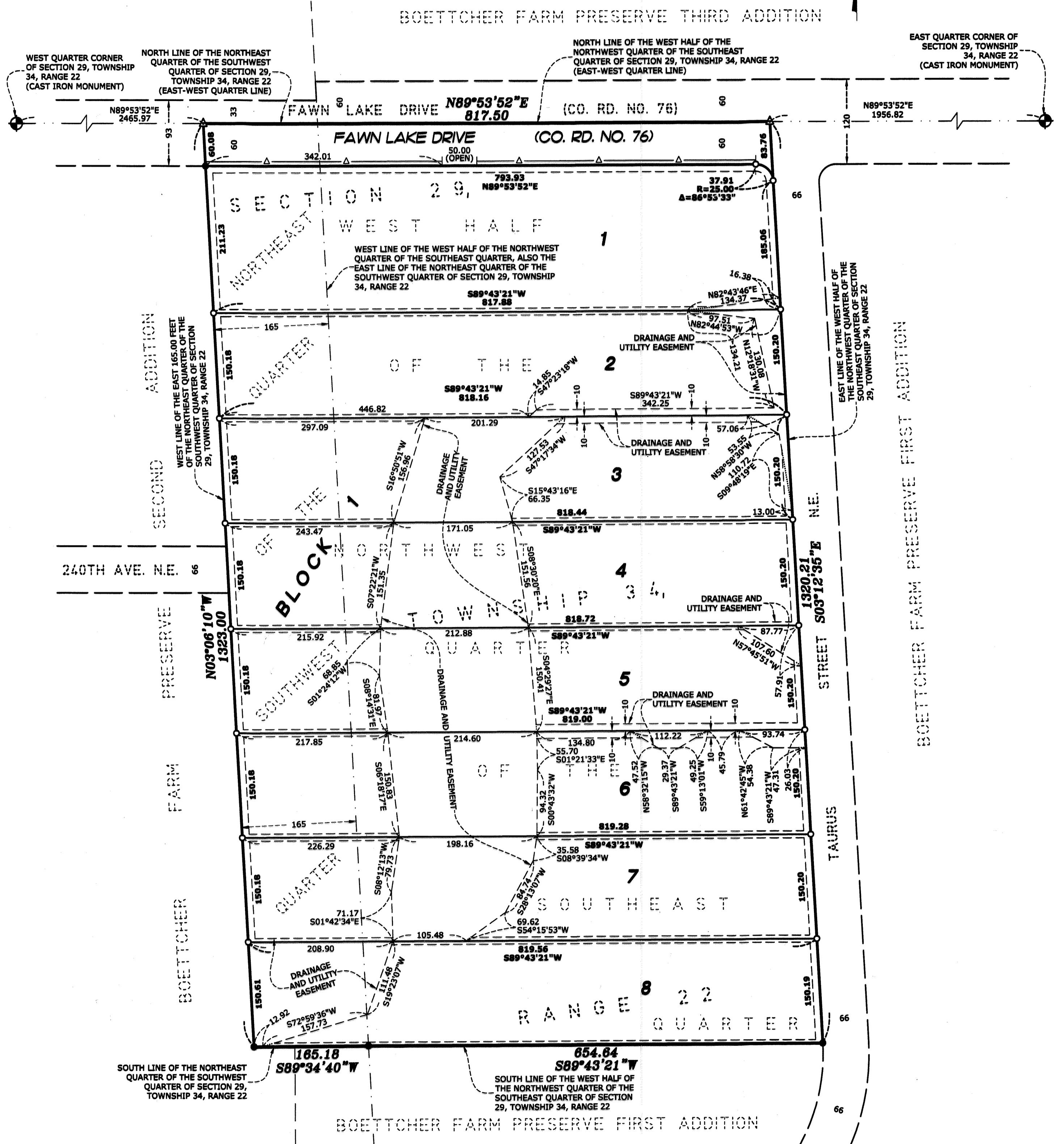
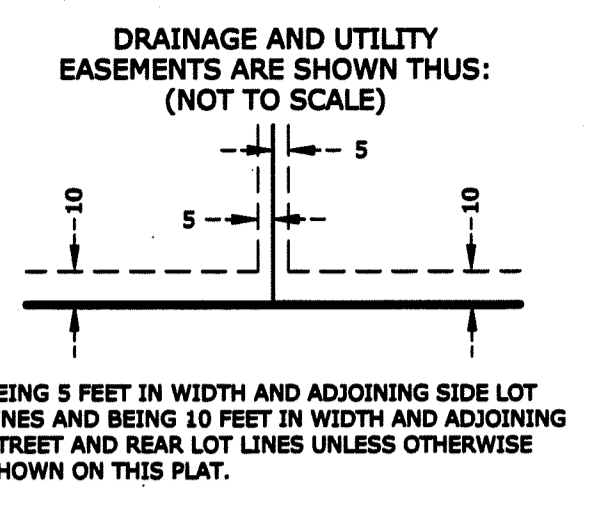
Township of Linwood
County of Anoka
SEC. 29, T34, R22

LEGEND

- DENOTES IRON MONUMENT FOUND 1/2 INCH IRON PIPE, MARKED RLS NO. 41578
- DENOTES 1/2 INCH BY 14 INCH IRON PIPE SET, MARKED RLS NO. 41578
- ▲ DENOTES SET PKNAIL
- ⊕ DENOTES ANOKA COUNTY CAST IRON SECTION MONUMENT
- △— DENOTES RIGHT OF ACCESS DEDICATED TO ANOKA COUNTY



FOR THE PURPOSES OF THIS PLAT, THE NORTH LINE OF THE WEST HALF OF THE NORTHWEST QUARTER OF THE SOUTHWEST QUARTER OF SECTION 29, TOWNSHIP 34, RANGE 22 IS ASSUMED TO HAVE A BEARING OF NORTH 89 DEGREES 53 MINUTES 52 SECONDS EAST.



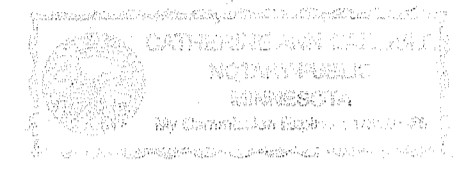
KNOW ALL PERSONS BY THESE PRESENTS: That Sherco Construction, Inc., a Minnesota corporation, owner of the following described property:
The West Half of the Northwest Quarter of the Southeast Quarter of Section Twenty-nine (29), Township Thirty-four (34), Range Twenty-two (22), together with the East 165 feet of the Northeast Quarter of the Southwest Quarter of said Section Twenty-nine (29), Anoka County, Minnesota.

Has caused the same to be surveyed and platted as CLIFFS BOETTCHER ESTATES and does hereby dedicate to the public for public use the public way and the drainage and utility easements as shown on this plat. Also dedicating to the County of Anoka the right of access onto County Road No. 76 as shown on this plat.

In witness whereof said Sherco Construction, Inc., a Minnesota corporation, has caused these presents to be signed by its proper officer this 11th day of August, 2022.

SHERCO CONSTRUCTION, INC.
Thomas A. Carlisle
Thomas A. Carlisle, Vice President

STATE OF Minnesota
COUNTY OF Winnetonka
This instrument was acknowledged before me this 11th day of August, 2022 by Thomas A. Carlisle, Vice President of Sherco Construction, Inc., a Minnesota corporation, on behalf of the corporation.



Catherine Ann Carlisle (Signature)
Catherine Ann Carlisle (Print Name)
Notary Public, Anoka County, Minnesota
My commission expires 1/31/2025

I Jason E. Rud do hereby certify that this plat was prepared by me or under my direct supervision; that I am a duly Licensed Land Surveyor in the State of Minnesota; that this plat is a correct representation of the boundary survey; that all mathematical data and labels are correctly designated on this plat; that all monuments depicted on this plat have been, or will be correctly set within one year; that all water boundaries and wet lands, as defined in Minnesota Statutes, Section 505.01, Subd. 3, as of the date of this certificate are shown and labeled on this plat; and all public ways are shown and labeled on this plat.

Dated this 8th day of AUGUST, 2022.
Jason E. Rud
Jason E. Rud, Licensed Land Surveyor
Minnesota License No. 41578

STATE OF Minnesota
COUNTY OF Anoka
This instrument was acknowledged before me this 8th day of August, 2022 by Jason E. Rud.

Latae Mack (Signature)
Latae Mack (Print Name)
Notary Public, Anoka County, Minnesota
My commission expires January 31, 2027

TOWNSHIP OF LINWOOD
We do hereby certify that on the 26th day of July, 2022, the Board of Supervisors for the Township of Linwood, Anoka County, Minnesota, approved this plat of CLIFFS BOETTCHER ESTATES and said plat is in compliance with the provisions of Minnesota Statutes, Section 505.03, Subd. 2.

By: *Pamela J. LeBlanc*, Clerk
By: *Mitchell Hoss*, Chairperson

COUNTY ENGINEER
Recommended for approval this 23 day of August, 2022.

for Joe MacPerson
By: *Joe MacPerson*
Joe MacPerson, Anoka County Engineer
Assistant

ANOKA COUNTY BOARD
We do hereby certify that on the 23 day of August, 2022, the Board of Commissioners of Anoka County, Minnesota, approved this plat of CLIFFS BOETTCHER ESTATES and said plat is in compliance with the provisions of Minnesota Statutes, Section 505.03, Subd. 2.

By: *Brenda Dziwanich*
Brenda Dziwanich, County Administrator
By: *John Albert*
John Albert, Chairperson

COUNTY SURVEYOR
I hereby certify that in accordance with Minnesota Statutes, Section 505.021, Subd. 11, this plat has been reviewed and approved this 23rd day of August, 2022.

By: *David M. Ziegler*
David M. Ziegler
Anoka County Surveyor

COUNTY ATTORNEY
This plat was approved as to form and execution on this 23 day of August, 2022.

By: *Chris Cooney*
Chris Cooney
for Anoka County Attorney

COUNTY AUDITOR/TREASURER
Pursuant to Minnesota Statutes, Section 505.021, Subd. 9, taxes payable in the year 2022 on the land hereinbefore described have been paid. Also, pursuant to Minnesota Statutes, Section 272.12, there are no delinquent taxes and transfer entered this 23rd day of August, 2022.

By: *Pamela J. LeBlanc*
Pamela J. LeBlanc
Property Tax Administrator
By: *Dumrah Wolf*
Dumrah Wolf, Deputy

COUNTY RECORDER/REGISTRAR OF TITLES
County of Anoka, State of Minnesota
I hereby certify that this plat of CLIFFS BOETTCHER ESTATES was filed in the office of the County Recorder/Registrar of Titles for public record on this 23rd day of August, 2022, at 11:40 o'clock A.M. and was duly recorded as Document Number 2313977.002.

By: *Pamela J. LeBlanc*
Pamela J. LeBlanc
County Recorder/Registrar of Titles
By: *Dumrah Wolf*
Dumrah Wolf, Deputy