

CLOVER LEAF COURT

CITY OF BLAINE, COUNTY OF ANOKA

KNOW ALL MEN BY THESE PRESENTS: That Good Value Homes, Inc., a Minnesota corporation, owner and proprietor, and Lumberman's Investment Corporation, a Texas corporation, mortgagee, of the following described property situate in the County of Anoka, State of Minnesota, to wit:

Lots 1 through 9, inclusive, Block 8; Lots 1 through 13, inclusive, Block 9; Lots 1 through 14, inclusive, Block 10; Lots 5 through 21, inclusive, Block 11, CLOVER LEAF FARM 2ND ADDITION according to the plat of record thereof on file in the Office of the County Recorder, Anoka County, Minnesota;

also, the WALKWAY as shown and dedicated on said CLOVER LEAF FARM 2ND ADDITION, said WALKWAY now vacated.

Have caused the same to be surveyed and platted as CLOVER LEAF COURT and do hereby donate and dedicate to the public for the public use forever the Walkway, and the drainage and utility easements as shown on the plat. In witness whereof said Good Value Homes, Inc. has caused these presents to be signed by its proper officers this 16 day of October 1980. Also, in witness whereof said Lumberman's Investment Corporation has caused these presents to be signed by its proper officer this 16 day of October 1980.

Good Value Homes, Inc.:
Donald L. Hardle
Donald L. Hardle, President

Betty R. Hardle
Betty R. Hardle, Secretary-Treasurer

Lumberman's Investment Corporation:
David J. Johnson
its Assistant Vice President

State of Minnesota) County of Anoka) The foregoing instrument was acknowledged before me this 16th day of October 1980 by Donald L. Hardle, President, and Betty R. Hardle, Secretary-Treasurer, of Good Value Homes, Inc., a Minnesota corporation on behalf of the corporation.

KATHLEEN G. ANDRES
NOTARY PUBLIC - MINNESOTA
ANOKA COUNTY
My Commission Expires Feb. 14, 1986

Kathleen G. Andres
Notary Public, Anoka County, Minnesota
My commission expires February 14, 1986

"NO DELINQUENT TAXES AND TRANSFER ENTERED"

Nov 6 1980
Charles B. Johnson
Auditor, Anoka County
BY [Signature]
Deputy

559881

OFFICE OF COUNTY RECORDER
STATE OF MINNESOTA, COUNTY OF ANOKA

I hereby certify that the within instrument was filed in this office for record on the NOV 6 1980 A.D., 1980

at 1:55 o'clock P.M., and was duly recorded in book 316E PLATS page 35

Dell C. Amundson
County Recorder
By [Signature]
Deputy

State of Minnesota) County of Anoka) The foregoing instrument was acknowledged before me this 16 day of October 1980 by David J. Johnson its Asst. Vice Pres. of Lumberman's Investment Corporation, a Texas corporation, on behalf of the corporation.

MARIE NELSON
NOTARY PUBLIC - MINNESOTA
ANOKA COUNTY
My Commission Expires Oct. 12, 1983

Marie Nelson
Notary Public, Anoka County, Minnesota
My commission expires _____

I hereby certify that I have surveyed and platted the property described on this plat as CLOVER LEAF COURT; that this plat is a correct representation of said survey; that all distances are correctly shown in feet and hundredths of a foot; that all monuments have been correctly placed in the ground as shown; that the outside boundary lines are correctly designated; and that there are no wet lands or public highways to be designated on said plat.

Richard H. Cherrier
Richard H. Cherrier,
Land Surveyor, Minnesota Reg. No. 9064

State of Minnesota) County of Hennepin) The foregoing instrument was acknowledged before me this 15th day of October 1980 by Richard H. Cherrier, Land Surveyor.

DONALD BISHOP
NOTARY PUBLIC - MINNESOTA
HENNEPIN COUNTY
My Commission Expires Oct. 20, 1981

Donald Bishop
Notary Public, Hennepin County, Minnesota
My commission expires October 20, 1981

BLAINE, MINNESOTA

This plat was approved and accepted by the City Council of the City of Blaine, Minnesota at a regular meeting thereof held this 2nd day of October 1980.

CITY COUNCIL OF THE CITY OF BLAINE, MINNESOTA
Francis Fogarty, Mayor Leslie Johnson, Manager
ANOKA COUNTY SURVEYOR

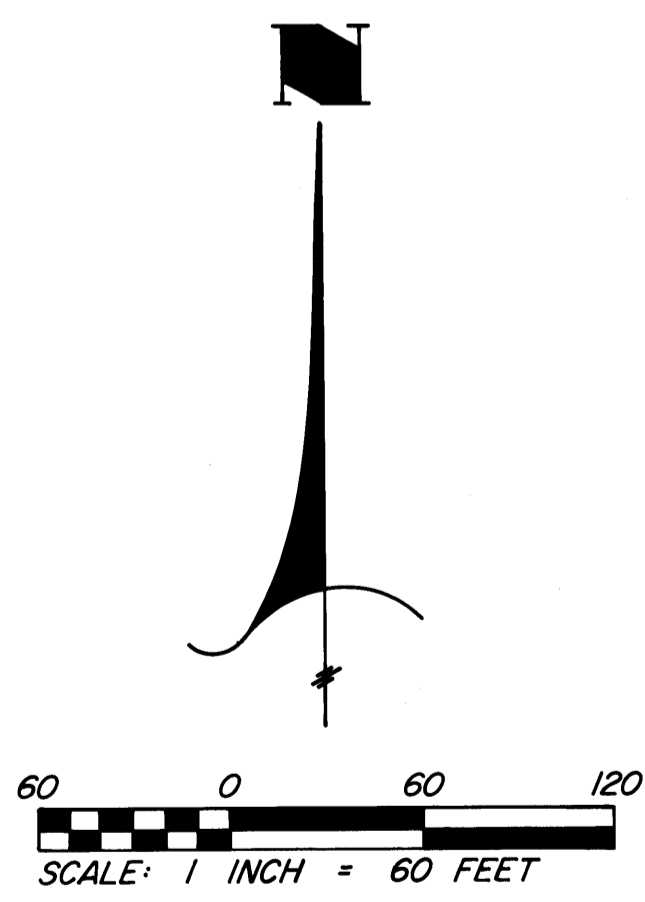
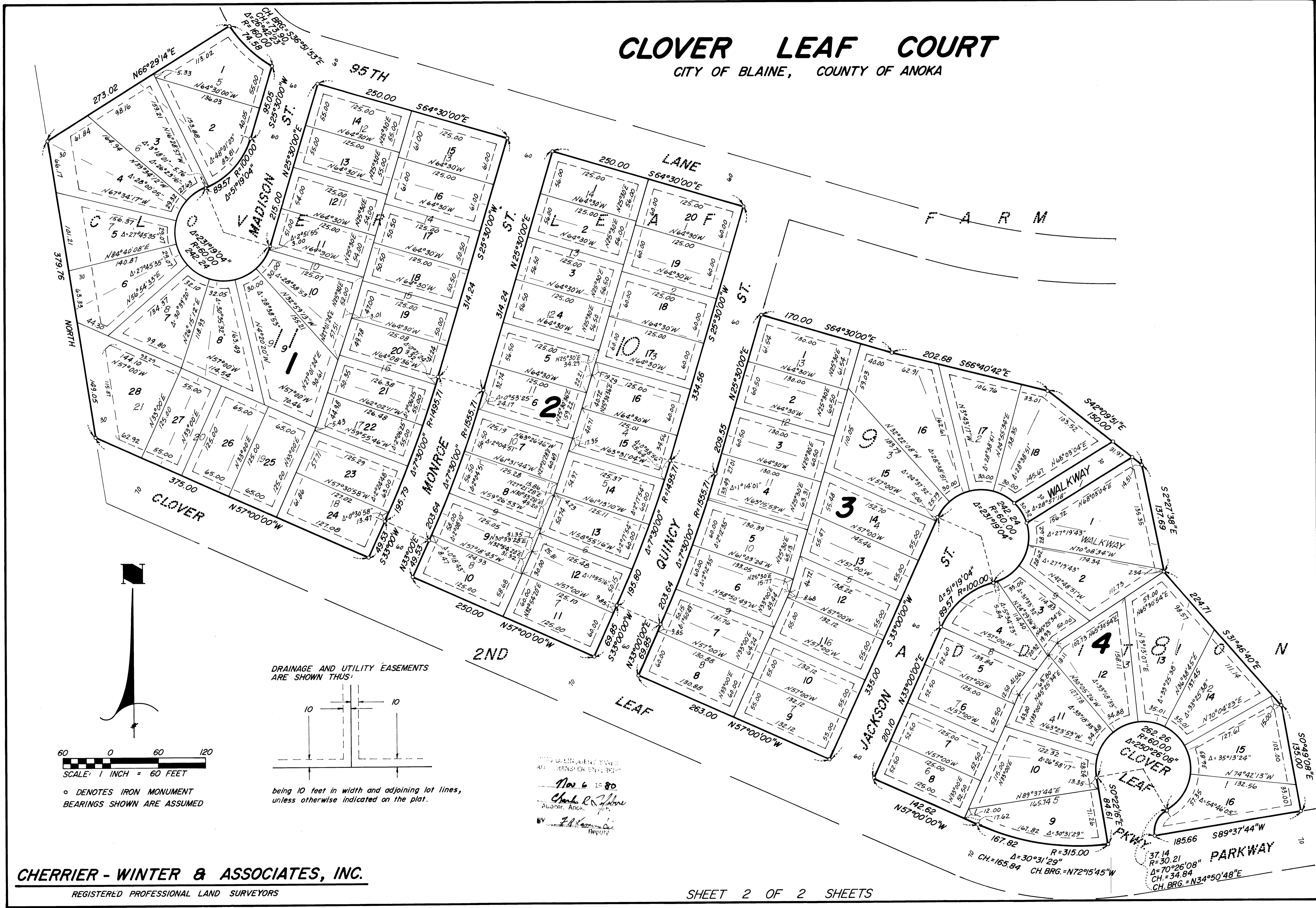
This plat was checked and approved on this 5th day of November 1980.

Roland W. Anderson
County Surveyor, Anoka County, Minnesota.



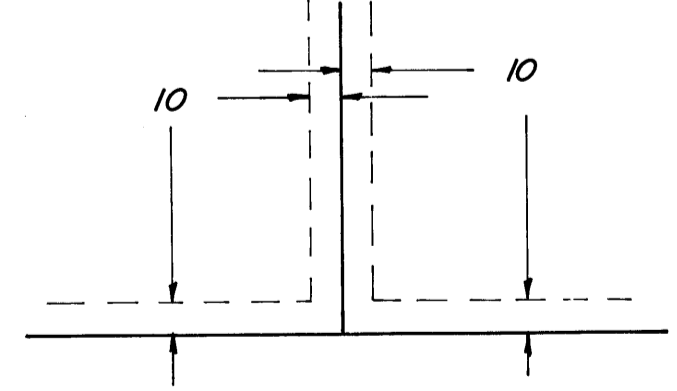
CLOVER LEAF COURT

CITY OF BLAINE, COUNTY OF ANOKA



○ DENOTES IRON MONUMENT
BEARINGS SHOWN ARE ASSUMED

DRAINAGE AND UTILITY EASEMENTS ARE SHOWN THUS:



being 10 feet in width and adjoining lot lines, unless otherwise indicated on the plat.

Nov 6 1980
Charles R. Winter
Auditor, Anoka
BY: [Signature]
Deputy

CHERRIER - WINTER & ASSOCIATES, INC.
REGISTERED PROFESSIONAL LAND SURVEYORS