

CLUB WEST FIFTEENTH ADDITION

BK 21 of Torrens Pg 26

CITY OF BLAINE
COUNTY OF ANOKA
SECTION 17, TOWNSHIP 31, RANGE 23

KNOW ALL PERSONS BY THESE PRESENTS: That The Rottlund Company, Incorporated, a Minnesota corporation, owner of the following described property:

Outlot A, CLUB WEST FOURTEENTH ADDITION, according to the recorded plat thereof, Anoka County, Minnesota.

Has caused the same to be surveyed and platted as CLUB WEST FIFTEENTH ADDITION and does hereby dedicate to the public for public use the drainage and utility easement as shown on this plat.

In witness whereof said The Rottlund Company, Incorporated, a Minnesota corporation, has caused these presents to be signed by its proper officer this 18th day of August, 2010.

THE ROTTLUND COMPANY, INC.

Todd M. Stutz, as Chief Operating Officer

STATE OF MINNESOTA
COUNTY OF Ramsey

This instrument was acknowledged before me this 18th day of August, 2010 by Todd M. Stutz, as Chief Operating Officer of The Rottlund Company, Incorporated, a Minnesota corporation, on behalf of the corporation.

Deborah L. Ridgeway
Deborah L. Ridgeway

Notary Public, Scott County, Minnesota
My Commission Expires 1/31/2015

I John C. Larson do hereby certify that this plat was prepared by me or under my direct supervision; that I am a duly Licensed Land Surveyor in the State of Minnesota; that this plat is a correct representation of the boundary survey; that all mathematical data and labels are correctly designated on this plat; that all monuments depicted on this plat have been, or will be correctly set within one year; that all water boundaries and wet lands, as defined in Minnesota Statutes, Section 505.01, Subd. 3, as of the date of this certificate are shown and labeled on this plat; and all public ways are shown and labeled on this plat.

John C. Larson
John C. Larson, Licensed Land Surveyor
Minnesota License Number 19828

STATE OF MINNESOTA
COUNTY OF Dakota

This instrument was acknowledged before me this 16th day of August, 2010 by John C. Larson.

Josephine A. Stertz
Josephine A. Stertz

Notary Public, Dakota County, Minnesota
My Commission Expires 9/31/2015

CITY COUNCIL, CITY OF BLAINE, MINNESOTA

This plat of CLUB WEST FIFTEENTH ADDITION was approved and accepted by the City Council of the City of Blaine, Minnesota at a regular meeting thereof held this 15th day of July, 2010, and said plat is in compliance with the provisions of Minnesota Statutes, Section 505.03, Subd. 2.

By: Tom Rizer, Mayor

By: Jane M. Cross, Clerk

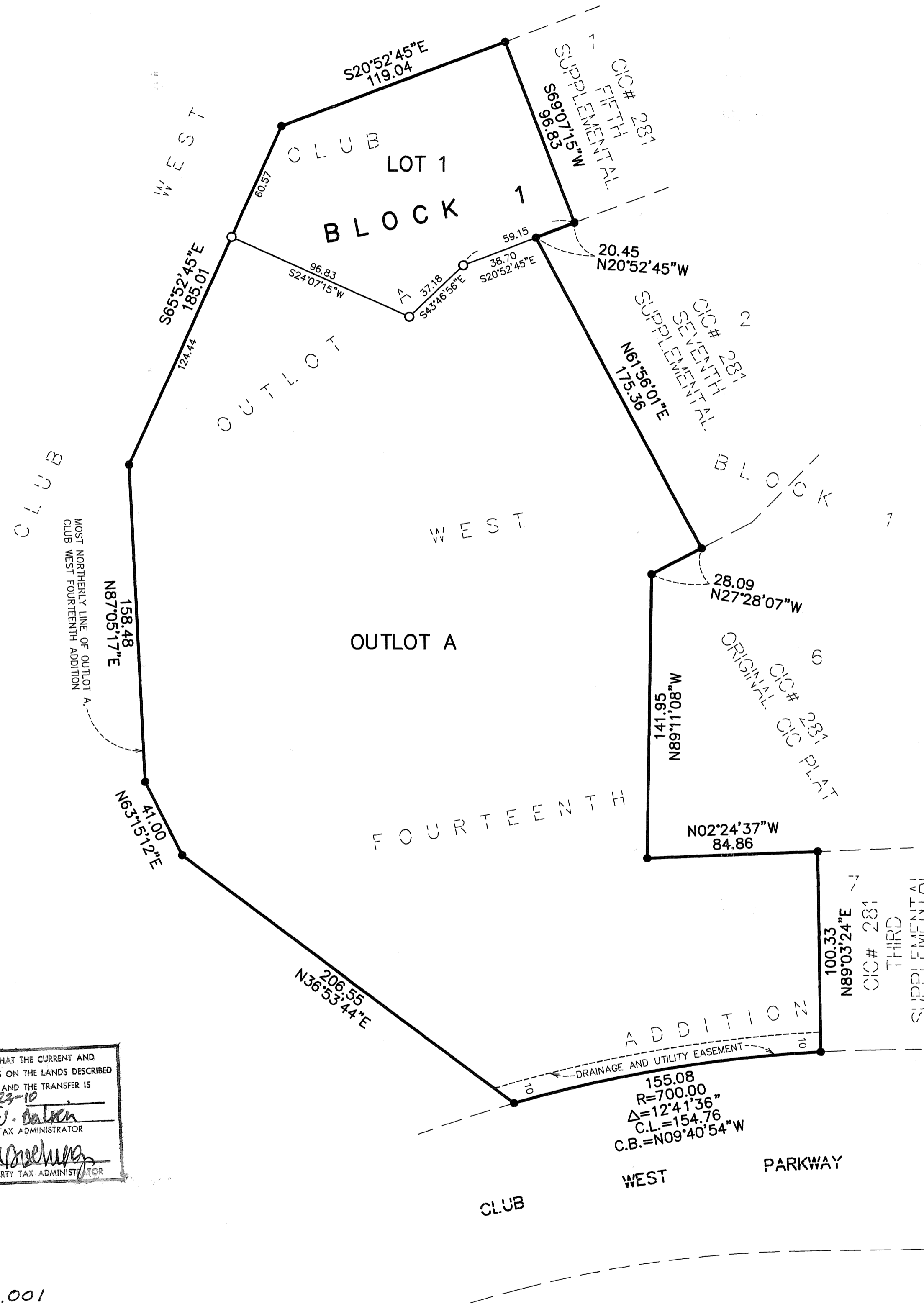
COUNTY SURVEYOR

I hereby certify that in accordance with Minnesota Statutes, Section 505.021, Subd. 11, this plat has been reviewed and approved this 23rd day of SEPTEMBER, 2010.

By: Larry D. Holm
Larry D. Holm, Anoka County Surveyor

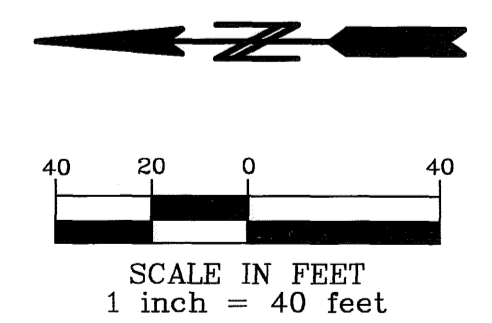
I HEREBY CERTIFY THAT THE CURRENT AND DELINQUENT TAXES ON THE LANDS DESCRIBED WITHIN ARE PAID AND THE TRANSFER IS ENTERED 9-23-10
Larry W. Dalton
PROPERTY TAX ADMINISTRATOR
By: JMD
DEPUTY PROPERTY TAX ADMINISTRATOR

502636.001
Office of REGISTRAR OF TITLES
STATE OF MINNESOTA
COUNTY OF ANOKA
I hereby certify that the within instrument was filed in this office on SEPTEMBER 23, 2010 at 11:25 o'clock AM
By: JMD
Deputy Registrar of Titles



- DENOTES 1/2 INCH BY 14 INCH IRON MONUMENT SET AND MARKED BY LICENSE NO. 19828 WHICH WILL BE SET WITHIN 1 YEAR OF RECORDING THIS PLAT.
- DENOTES FOUND IRON MONUMENT.

BEARINGS ARE BASED ON THE MOST NORTHERLY LINE OF OUTLOT A, CLUB WEST FOURTEENTH ADDITION WHICH IS ASSUMED TO HAVE A BEARING OF NORTH 87° 05' 17" EAST.



\$56.00