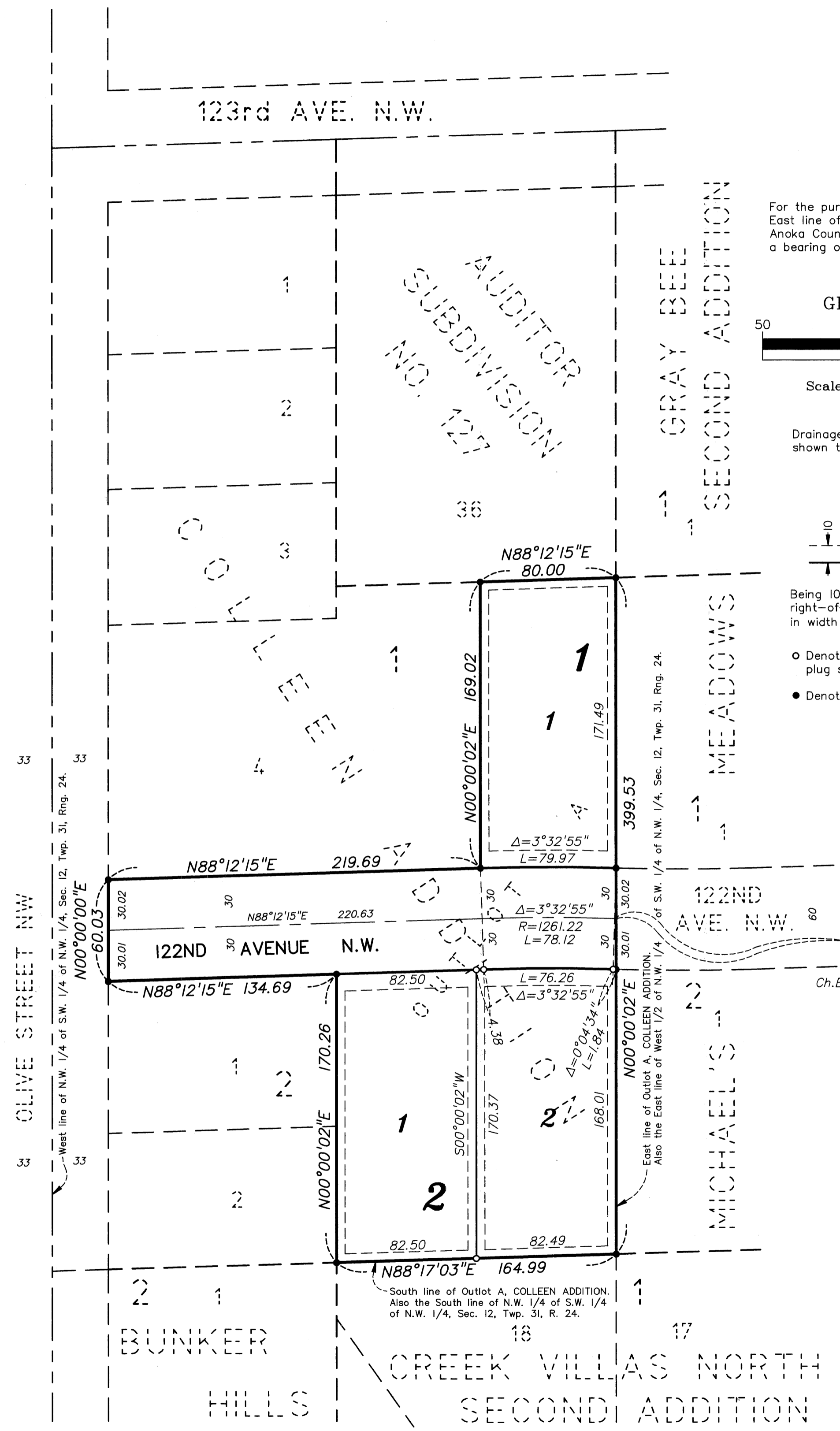


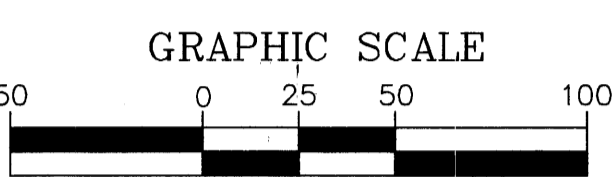
# COLLEEN SECOND ADDITION

BK 20 of TORNS pg 10

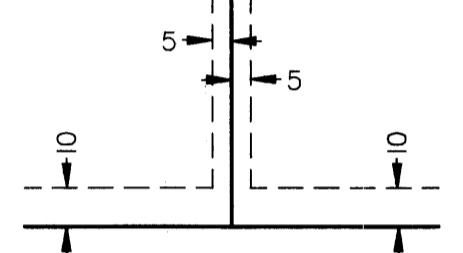
CITY OF COON RAPIDS,  
COUNTY OF ANOKA  
SEC. 12, T. 31, R. 24.



For the purposes of this plat the East line of Outlot A, COLLEEN ADDITION, Anoka County, MN, is assumed to have a bearing of North 00°00'02" East.



Drainage and Utility easements are shown thus:



Being 10 feet in width and adjoining right-of-way lines, and being 5 feet in width and adjoining lot lines.

- Denotes iron pipe set with a plastic plug stamped R.L.S. 21729.
- Denotes iron monument found.

KNOW ALL PERSONS BY THESE PRESENTS: That Shamrock Development, Inc., a Minnesota corporation, fee owner of the following described property situated in the State of Minnesota, County of Anoka, to wit:

Outlot A, COLLEEN ADDITION.

Has caused the same to be surveyed and platted as COLLEEN SECOND ADDITION and does hereby donate and dedicate to the public for public use forever the avenue, and also dedicating the easements, as shown on this plat, for drainage and utility purposes only.

In witness whereof said Shamrock Development, Inc. has caused these presents to be signed by its proper officer this 11<sup>th</sup> day of October, 2005

SHAMROCK DEVELOPMENT, INC.  
By: James M. Stanton, President

State of Minnesota, County of Anoka

The foregoing instrument was acknowledged before me this 11<sup>th</sup> day of October, 2005, by James M. Stanton, as President of Shamrock Development, Inc., a Minnesota corporation, on behalf of the corporation.



Angela J. Zajac, Notary Public  
Anoka, County, Minnesota  
My Commission expires: January 31, 2010

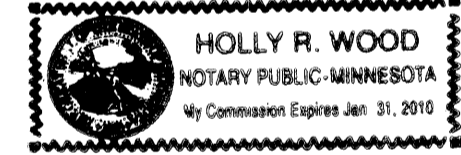
I hereby certify that I have surveyed and platted the property described in this plat as COLLEEN SECOND ADDITION and that this plat is a correct representation of said survey; that all monuments have been correctly placed in the ground as shown on the plat; that all distances are correctly shown on the plat in feet and hundredths of a foot; that the outside boundary lines are correctly designated on the plat; and that there are no wet lands as defined in Minnesota Statutes 505.02, Subdivision 1, or public highways to be designated on the plat other than as shown thereon.

Rick M. Blom  
Rick M. Blom, Land Surveyor  
Minnesota License No. 21729

State of Minnesota, County of Sherburne

The foregoing instrument was acknowledged before me this 30<sup>th</sup> day of September, 2005, by Rick M. Blom, Land Surveyor, Minnesota License No. 21729.

Holly R. Wood, Notary Public  
Sherburne, County, Minnesota  
My Commission expires: January 31, 2010



Annexed plat of COLLEEN SECOND ADDITION was approved by the Planning Commission of the City of Coon Rapids, Minnesota this     day of    , 2005

By: Doreen M. Naeve, Chairman

Annexed plat of COLLEEN SECOND ADDITION was approved by the City Council of Coon Rapids, Minnesota at a regular meeting thereof held this     day of    , 2005. If applicable, the written comments and recommendations of the Commissioner of Transportation and the County Highway Engineer have been received by the City or the prescribed 30 day period has elapsed without receipt of such comments and recommendations, as provided by Minnesota Statutes Section 505.03, Subdivision 2.

By: Larry O. Hoium, Mayor  
Attest: John R. Anderson, Clerk



This plat has been checked and approved this 31<sup>ST</sup> day of October, 2005

Larry O. Hoium by Charles F. Lyster, Anoka County Surveyor

485103.002 Torrens

Office of REGISTRATION & RECORDS  
STATE OF MINNESOTA  
COUNTY OF ANOKA  
I hereby certify that the within instrument was filed in this office on 10/31/05 at 12:45 of clock P  
Maurice A. Deryn, Registrar of Titles  
GKE Deputy Registrar of Titles

October 31, 2005  
Lester

\$56.00