

COLONIAL TERRACE

CITY OF ANOKA — COUNTY OF ANOKA

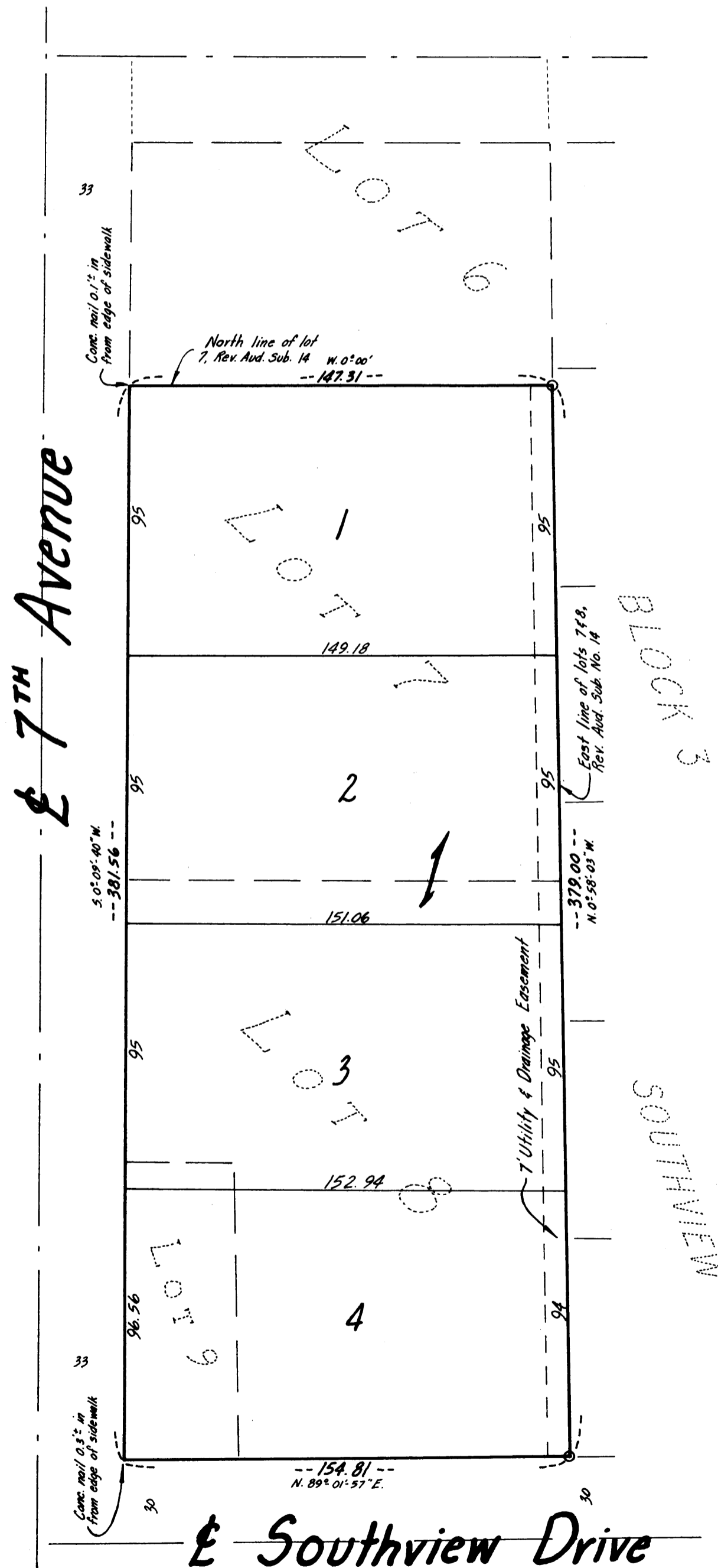
ROLAND W. ANDERSON - SURVEYOR

MAY 1964



Scale: 1" = 40'

○ - Denotes Iron



I HEREBY CERTIFY THAT THE TAXES PAYABLE IN THE YEAR 1964 ON THE LANDS DESCRIBED WITHIN ARE PAID

Robert A. Peterson
Anoka County Treasurer

TAXES PAID

This 19th day of June 1964
Kenneth W. Campbell
Auditor, Anoka County, Minn.
By *Lulu L. Lopez* Deputy

KNOW ALL MEN BY THESE PRESENTS that Colonial Properties, a partnership, owners and proprietors of the following described property situate in the State of Minnesota, County of Anoka, to wit: All of lot 7, lot 8, and lot 9, Revised Auditor's Subdivision No. 14; have caused the same to be surveyed and platted as Colonial Terrace, subject to the Utility and Drainage Easement as shown on the annexed plat. In witness whereof Colonial Properties has caused these presents to be signed by its proper officer this 29 day of May A. D. 1964.

IN PRESENCE OF

Robert B. Johnson
As to Winslow R. Chamberlain

Charles A. Ehlken

COLONIAL PROPERTIES, a partnership

Winslow R. Chamberlain

State of Minnesota
County of Anoka

On this 29 day of May A. D. 1964, before me a notary public, within and for said County and State, personally appeared Winslow R. Chamberlain, to me personally known, who being by me duly sworn, did say that he is a partner in Colonial Properties, a partnership name in the foregoing instrument, that said was signed in behalf of said partnership and said Winslow R. Chamberlain acknowledge said instrument to be the free act and deed of said partnership.

Edith Kukulish
Notary Public, Anoka County, Minnesota
My commission expires Aug 26, 67

EDITH KUKULISH
Notary Public, Anoka County, Minn.
My Commission Expires Aug. 26, 1967

I hereby certify that I have surveyed and platted the property described on this plat as COLONIAL TERRACE, that this plat is a correct representation of said survey; that all distances are correctly shown on said plat in figures denoting feet and decimals of a foot; that the monuments for the guidance of future surveys have been correctly placed in the ground as shown on said plat; that the outside boundaries of the land are correctly designated on said plat; and that there are no wet lands or public highways to be designated on said plat other than are shown thereon.

Roland W. Anderson
Surveyor - Minnesota Registration No. 5715

State of Minnesota
County of Anoka

Above certificate subscribed and sworn to, before me, a notary public, within and for said County and State on this 28th day of May A.D. 1964.

Dorothy Richardson
Notary Public, Anoka County, Minnesota
My Commission Expires ~~Aug 14, 1969~~

DOROTHY RICHARDSON
Notary Public, Anoka County, Minn.
My Commission Expires April 14, 1969

Approved by the City Commission of Anoka, Minnesota this 15th day of June 1964.

Signed *J. W. Johnson*
Mayor

Approved by the Planning Commission of the City of Anoka, Minnesota this 1st day of June 1964.

Signed *Thomas E. Wilkey*
Chairman

Attest *Charles A. Ehlken*
City Clerk

Attest *Melvin E. Watson*
Secretary

Checked and approved this 19th day of June 1964.

Roland W. Anderson
Anoka County Surveyor

OFFICE OF REGISTER OF DEEDS
STATE OF MINNESOTA, COUNTY OF ANOKA

I hereby certify that the within instrument was filed in this office for record on the 1st day of June 1964 A.D. 1964 at 2 o'clock P.M. and was duly recorded in book 2 of plats page 15

Bertrude Skinner
Register of Deeds
By *Margaret Russell* Deputy