

CONSTANCE ESTATES SECOND ADDITION

KNOW ALL PERSONS BY THESE PRESENTS: That Continental Development Corporation, a Minnesota corporation, owner and proprietor and Village Bank, a Minnesota Corporation, mortgagee of the following described property situated in the County of Anoka, State of Minnesota, to-wit:

Outlot B, CONSTANCE ESTATES, according to the recorded plat thereof, Anoka County, Minnesota.

Have caused the same to be surveyed and platted as CONSTANCE ESTATES SECOND ADDITION and do hereby donate and dedicate to the public for public use forever the drainage and utility easements as shown on the plat. Also dedicating to the County of Anoka the right of access onto County Road No. 60 as shown on the plat. In witness whereof said Continental Development Corporation has caused these presents to be signed by its proper officer this 25TH day of FEBRUARY, 2005. Also in witness whereof said Village Bank, has caused these presents to be signed by its proper officer this 22ND day of FEBRUARY, 2005.

CONTINENTAL DEVELOPMENT CORPORATION

Charles S. Cook
Charles S. Cook, as president

VILLAGE BANK

Pat Will
as Senior Vice President

STATE OF MINNESOTA) The foregoing instrument was acknowledged before me this 25TH day of FEBRUARY, 2005, by Charles S. Cook, as president of CONTINENTAL DEVELOPMENT CORPORATION, a Minnesota corporation, on behalf of the corporation.



David Kamala
Notary Public, ANOKA County, Minnesota
My Commission expires 1-31-09

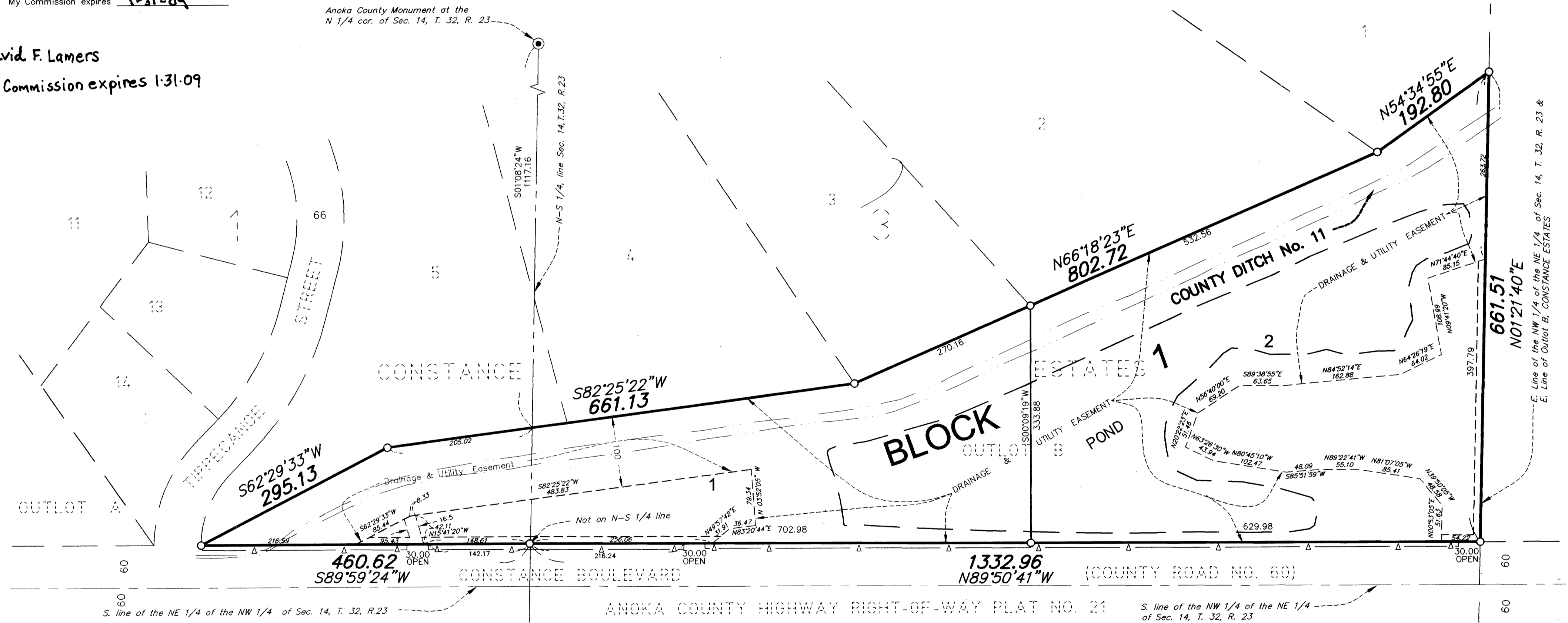
STATE OF MINNESOTA) The foregoing instrument was acknowledged before me this 22ND day of FEBRUARY, 2005, by PAT CULLEN, as SENIOR VICE PRESIDENT of Village Bank, a Minnesota corporation, on behalf of the corporation.



David Lamers
Notary Public, ANOKA County, Minnesota
My Commission expires 1-31-09

David F. Lamers
My Commission expires 1-31-09

A77815.001 Abstract
OFFICE OF COUNTY RECORDER
STATE OF MINNESOTA, COUNTY OF ANOKA
I hereby certify that the within instrument was filed in this office for record on the 29 August A.D., 2005
3:41 o'clock P.M., and was duly recorded in book 70 Abst page 18
Maureen J. Devine
County Recorder
By: B.M.H.
Deputy



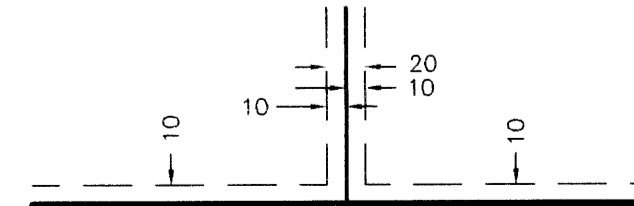
\$56.00

0 100 200
SCALE 1 INCH = 100 FEET
SCALE IN FEET

I HEREBY CERTIFY THAT THE CURRENT AND DELINQUENT TAXES ON THE LANDS DESCRIBED WITHIN ARE PAID AND THE TRANSFER IS ENTERED 8-29-05
MAURLEN J. DEVINE
PROPERTY TAX ADMINISTRATOR
By: J. M. Schrage
DEPUTY PROPERTY TAX ADMINISTRATOR

FOR THE PURPOSES OF THIS PLAT, THE EAST LINE OF OUTLOT B, CONSTANCE ESTATES, ANOKA COUNTY, MINNESOTA, IS ASSUMED TO BEAR N01°21'40"E.

DRAINAGE AND UTILITY EASEMENTS SHOWN THUS:



BEING 10 FEET WIDE ON EACH SIDE OF ALL LOT LINES UNLESS OTHERWISE SHOWN ON THE PLAT.

- DENOTES FOUND MONUMENT.
- DENOTES A MONUMENT REQUIRED BY MINNESOTA STATE STATUTE WHICH WILL BE SET WITHIN ONE YEAR OF THE RECORDING DATE OF THIS PLAT, AND SHALL BE EVIDENCED BY A 1/2" INCH BY 14 INCH IRON PIPE MARKED BY RLS 12251.
- ⦿ DENOTES ANOKA COUNTY MONUMENT.

—▲— DENOTES "RIGHT OF ACCESS" DEDICATED TO ANOKA COUNTY

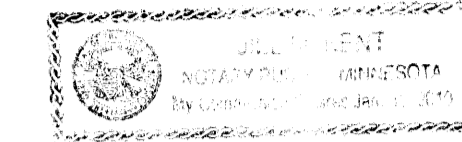


RLK - Kuusisto, Ltd.

I hereby certify that I have surveyed and platted the land described in the dedication on this plat as CONSTANCE ESTATES SECOND ADDITION; that this plat is a correct representation of said survey; that all distances are correctly shown on said plat in feet and hundredths of a foot; that all monuments have been correctly placed in the ground as shown, or shall be correctly placed in the ground within one year after the recording date of this plat; that the outside boundaries are correctly designated on said plat; and that there are no wetlands, in accordance with M.S. 505.02 Subdivision 1, or public highways to be designated on said plat other than as shown thereon.

Jeffrey N. Caine
Jeffrey N. Caine, Registered Land Surveyor
Minnesota License No. 12251

STATE OF MINNESOTA) The surveyors certificate was acknowledged before me a Notary Public, this 17TH day of February, 2005, by Jeffrey N. Caine, Land Surveyor.



Jill McKent
Notary Public, Anoka County, Minnesota
My Commission expires 01-31-10

CITY OF HAM LAKE

We hereby certify that the City Council of the City of Ham Lake, Anoka County, Minnesota, duly accepted and approved the plat of CONSTANCE ESTATES SECOND ADDITION at a regular meeting held this 7 day of February, 2005. If applicable, the written comments and recommendations of the Commissioner of Transportation and the County Highway Engineer have been received by the city or the prescribed 30 day period has elapsed without receipt of such comments and recommendations, as provided by Minn. Statutes, Section 505.03, Subd. 2.

By [Signature] Mayor By Heidi A. Niska Clerk

Checked and approved this 20TH day of JULY, 2005.

By Larry D. Shi
Anoka County Surveyor