

COOPER - DALBERG ADDITION

VILLAGE OF SPRING LAKE PARK

CARTWRIGHT & OLSON
LAND SURVEYORS

OCTOBER, 1955

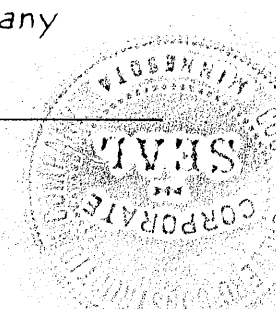
KNOW ALL MEN BY THESE PRESENTS that Cooper-Dalberg Construction Company, a Minnesota Corporation, owner and proprietor of the following described property situate in the County of Anoka, State of Minnesota to-wit: That part of the North 32.12 Acres of the North half (N.1/2) of the Northwest quarter (N.W.1/4) of Section Two (2), Township Thirty (30), Range Twenty-four (24), lying East of State Highway Number 56 (University Avenue Northeast), have caused the same to be surveyed and platted as COOPER-DALBERG ADDITION and do hereby donate and dedicate to the public for public use forever the Avenue, Roads, and Street as shown on the annexed plat, also subject to easements for utility purposes as shown on the annexed plat. In witness whereof we have hereunto set our hands and seals on this 17th day of October A.D. 1955.

In the presence of:

Signed:

Louis W. Nauman
Mrs. Louis W. Nauman

Cooper-Dalberg Construction Company
Samuel C. Dalberg
President
Thomas E. Cooper
Secretary and Treasurer



STATE OF MINNESOTA } s.s.
COUNTY OF ANOKA }

On this 17th day of October A.D. 1955, before me, a Notary Public within and for said County and State, personally appeared Samuel C. Dalberg and Thomas E. Cooper to me personally known, who being by me duly sworn did say that they are President and Secretary-Treasurer respectively of Cooper-Dalberg Construction Company, the Corporation named in the foregoing instrument, and that the seal affixed to said instrument is the Corporate seal of said Corporation, and that said instrument was signed and sealed in behalf of said Corporation by authority of its Board of Directors, and said Samuel C. Dalberg and Thomas E. Cooper acknowledge said instrument to be the free act and deed of said Corporation.

Louis W. Nauman
Notary Public, Anoka County, Minnesota
My Commission Expires Feb. 27, 1961

I hereby certify that I have surveyed and platted the land described in the dedication on this plat as COOPER-DALBERG ADDITION; that this plat is a correct representation of said survey; that all distances are correctly shown on said plat denoting feet and decimals of a foot; that the monuments for the guidance of future surveys have been correctly placed in the ground as shown on said plat; that the topography of the land is correctly shown on said plat; that the outside boundaries of the land are correctly designated on said plat; and that there are no wet lands or public highways to be designated on said plat other than are shown thereon.

James A. Cartwright
Registered Land Surveyor - Minnesota Reg. No. 1983

STATE OF MINNESOTA } s.s.
COUNTY OF HENNEPIN }

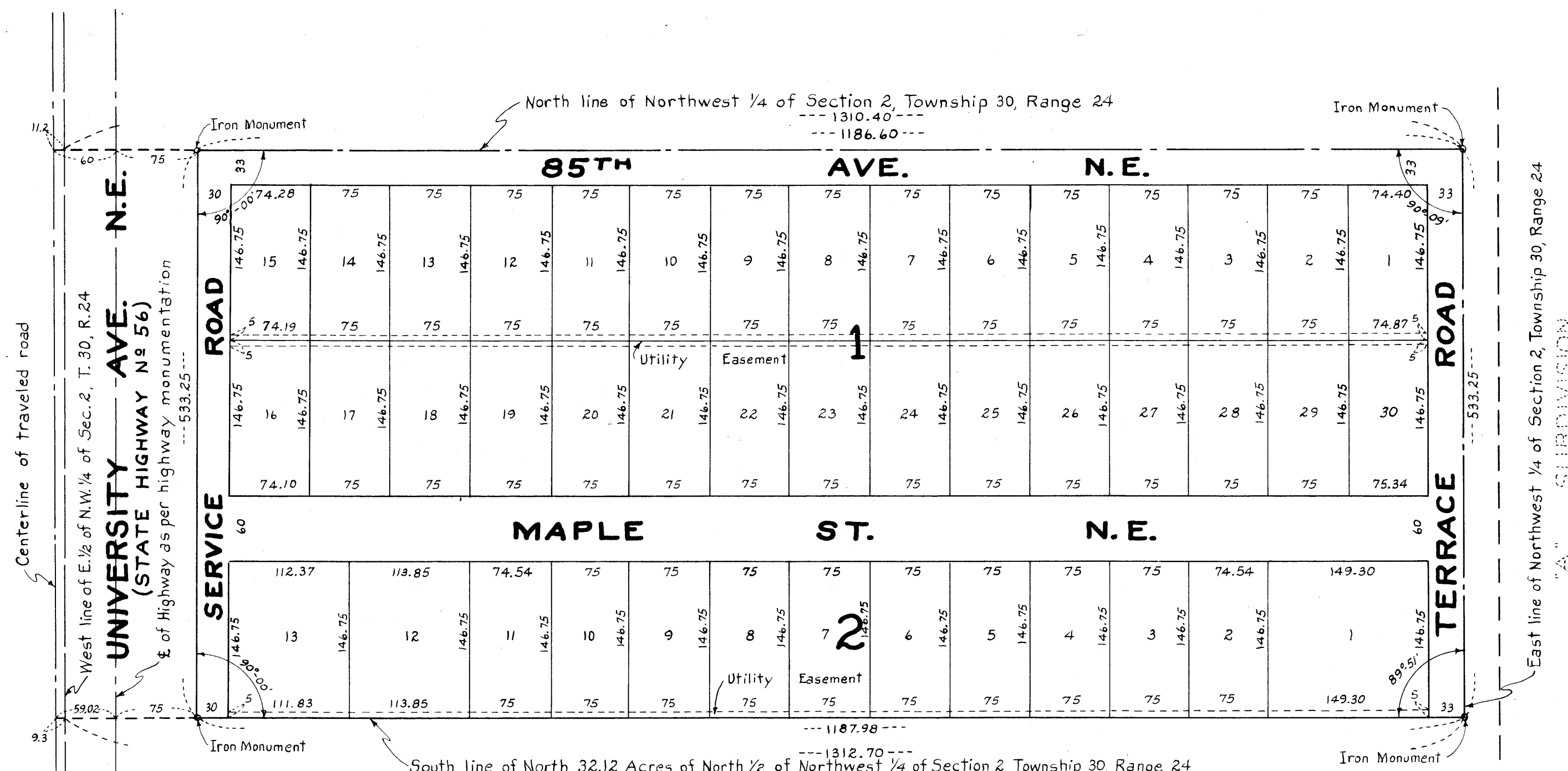
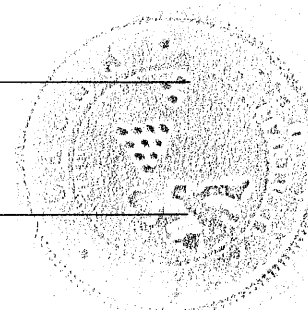
Above certificate subscribed and sworn to before me, a Notary Public within and for said County and State on this 17th day of October A.D. 1955.

Norman C. Hoium
Notary Public, Hennepin County, Minnesota
My Commission Expires Oct. 14, 1961

We hereby certify that the Village Council of the Village of Spring Lake Park, Anoka County, Minnesota duly accepted and approved the annexed plat of COOPER-DALBERG ADDITION at a regular meeting thereof held this 24th day of October A.D. 1955.

VILLAGE OF SPRING LAKE PARK, ANOKA COUNTY, MINNESOTA

Stanley W. Dahlmeier
Mayor
John M. Conde
Clerk



SCALE: 1"=100'

Approved as to execution and form on this 24th day of October A.D. 1955.

Samuel C. Dalberg
Village Attorney, Village of Spring Lake Park

168351
OFFICE OF REGISTER OF DEEDS } s.s.
STATE OF MINNESOTA, COUNTY OF ANOKA }
I hereby certify that the within instrument was filed in this office for record on the 17th day of October A.D. 1955, at 2:15 o'clock P.M., and was duly recorded in book 168351 of Plate 20.
Margaret Russell
Register of Deeds
By *Margaret Russell* deputy

HEREBY CERTIFY THAT TAXES FOR THE YEAR 1954 ON THE LANDS DESCRIBED WITHIN ARE PAID
Walter D. Bowser
County Treasurer

TAXES PAID
This 9th day of Nov. 1955
Deborah A. Campbell
Auditor, Anoka County, Minn.
Joan Smith Deputy