

COR PARKVIEW ADDITION

Book 78 of ABST Pg 42 CITY OF RAMSEY
COUNTY OF ANOKA
SEC. 28, TWP. 32, RGE. 25

KNOW ALL PERSONS BY THESE PRESENTS: That PSD, LLC, a Minnesota limited liability company, owner of the following described property:

OUTLOT A, RAMSEY TOWN CENTER 11TH ADDITION, according to the recorded plat thereof, Anoka County, Minnesota

Has caused the same to be surveyed and platted as COR PARKVIEW ADDITION.

In witness whereof said PSD, LLC, a Minnesota limited liability company, has caused these presents to be signed by its proper officer this 20th day of October, 2015.

SIGNED: PSD, LLC

Pamela S. Deal
Pamela S. Deal, Chief Manager

STATE OF MINNESOTA
COUNTY OF ANOKA

This instrument was acknowledged before me this 20th day of October, 2015, by Pamela S. Deal, Chief Manager of PSD, LLC, a Minnesota limited liability company.

Valeria J. Kruger
Notary Public, Anoka County, Minnesota

My Commission Expires JANUARY 31, 2017

I Russell O. Halverson do hereby certify that this plat was prepared by me or under my direct supervision; that I am a duly Licensed Land Surveyor in the State of Minnesota; that this plat is a correct representation of the boundary survey; that all mathematical data and labels are correctly designated on this plat; that all monuments depicted on this plat have been, or will be correctly set within one year; that all water boundaries and wet lands, as defined in Minnesota Statutes, Section 505.01, Subd. 3, as of the date of this certificate are shown and labeled on this plat; and all public ways are shown and labeled on this plat.

Dated this 19th day of October, 2015.

Russell O. Halverson
Russell O. Halverson, Licensed Land Surveyor
Minnesota License No. 41813

STATE OF MINNESOTA
COUNTY OF DAKOTA

This instrument was acknowledged before me this 19th day of October, 2015, by Russell O. Halverson.

Cathryn M. DeBaker
Notary Public, Dakota County, Minnesota

My Commission Expires 11/31/17



CITY COUNCIL, CITY OF RAMSEY, MINNESOTA

This plat of COR PARKVIEW ADDITION was approved and accepted by the City Council of the City of Ramsey, Minnesota at a regular meeting thereof held this 26th day of MAY, 2015, and said plat is in compliance with the provisions of Minnesota Statutes, Section 505.03, Subd. 2.

City Council, City of Ramsey, Minnesota

By *Sandy J. ...* Mayor

By *Sharon M. ...* Clerk

COUNTY SURVEYOR

I hereby certify that in accordance with Minnesota Statutes, Section 505.021, Subd. 11, this plat has been reviewed and approved this 26th day of October, 2015.

Larry D. ...
Larry D. ... Anoka County Surveyor

COUNTY AUDITOR/TREASURER

Pursuant to Minnesota Statutes, Section 505.021, Subd. 9, taxes payable in the year 2015 on the land hereinbefore described have been paid. Also, pursuant to Minnesota Statutes, Section 272.12, there are no delinquent taxes and transfer entered this 26th day of October, 2015.

Jonell M. Sawyer
Property Tax Administrator

By *J. ...*, Deputy

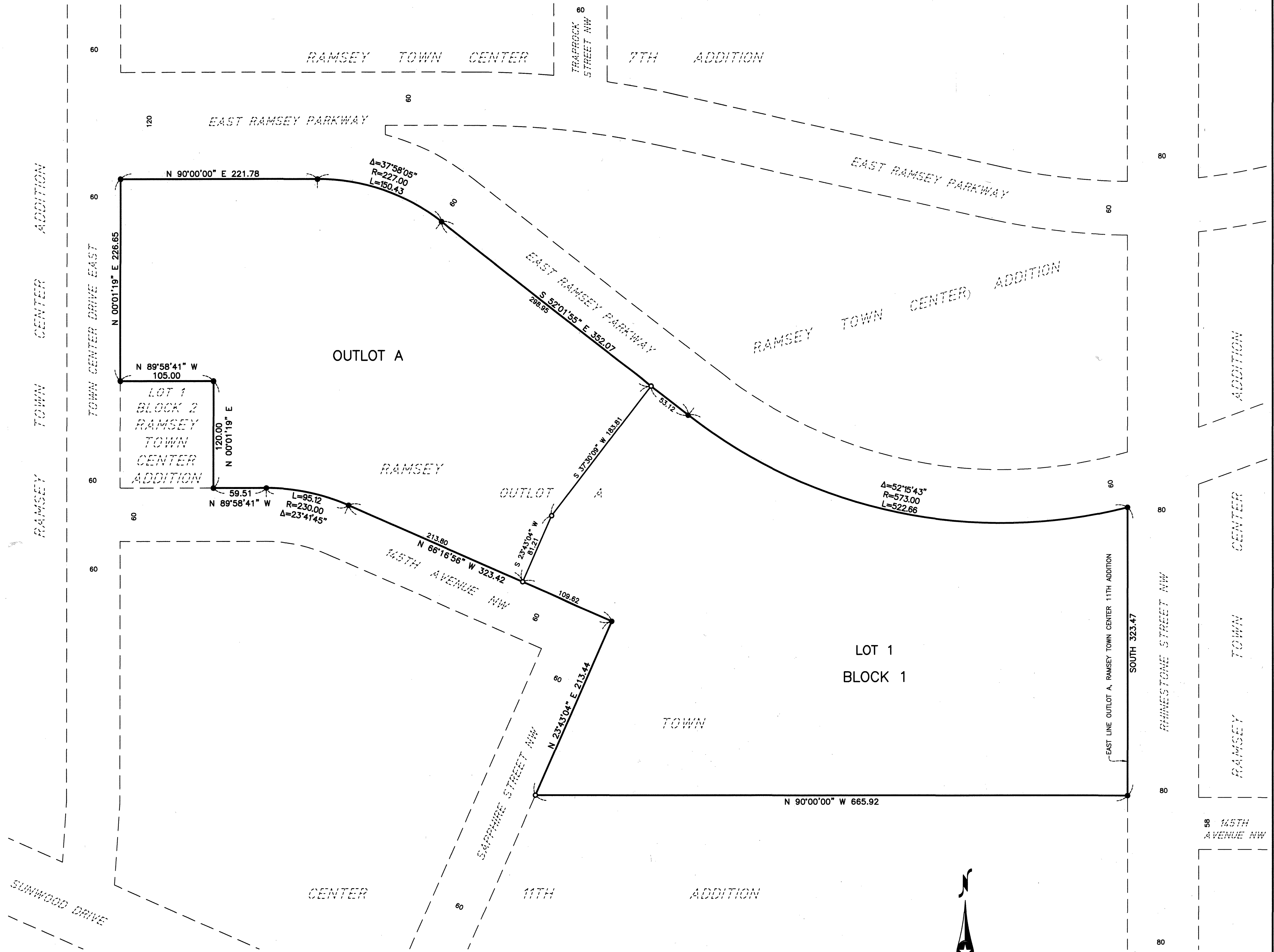
COUNTY RECORDER/REGISTRAR OF TITLES
County of Anoka, State of Minnesota

I hereby certify that this plat of COR PARKVIEW ADDITION was filed in the office of the County Recorder/Registrar of Titles for public record on this 26th day of October, 2015, at 11 o'clock A.M. and was duly recorded in Book 78, Page 42, as Document Number 2121425.001.

Jonell M. Sawyer
County Recorder/Registrar of Titles

By *J. ...*, Deputy

\$56



LEGEND

- 1/2 INCH X 14 INCH IRON PIPE MONUMENT SET MARKED BY REG. NO. 41813
- MONUMENT FOUND

The east line of Outlot A, RAMSEY TOWN CENTER 11TH ADDITION is assumed to bear SOUTH.

