

COR SAPPHIRE ADDITION

224 6866.002

CITY OF RAMSEY
COUNTY OF ANOKA
SEC. 28, T. 32, R. 25

KNOW ALL PERSONS BY THESE PRESENTS: That PSD, LLC, a Minnesota limited liability company, owner of the following described property:

Outlot A, COR PARKVIEW ADDITION, according to the recorded plat thereof, Anoka County, Minnesota
Has caused the same to be surveyed and platted as COR SAPPHIRE ADDITION and does hereby dedicate to the public for public use the drainage and utility easement as created by this plat.

In witness whereof said PSD, LLC, a Minnesota limited liability company, has caused these presents to be signed by its proper officer this 17th day of October, 2019.

SIGNED: PSD, LLC
By Pamela S. Deal, Chief Manager
Pamela S. Deal

STATE OF MINNESOTA
COUNTY OF Anoka
This instrument was acknowledged before me this 17th day of October, 2019 by Pamela S. Deal, Chief Manager of PSD, LLC, a Minnesota limited liability company.

Patricia Innie
Notary Public, Minnesota
My commission expires January 31, 2023
Patricia Innie
Notary Printed Name

SURVEYOR'S CERTIFICATE
I Brian Person do hereby certify that this plat was prepared by me or under my direct supervision; that I am a duly Licensed Land Surveyor in the State of Minnesota; that this plat is a correct representation of the boundary survey; that all mathematical data and labels are correctly designated on this plat; that all monuments depicted on this plat have been, or will be correctly set within one year; that all water boundaries and wet lands, as defined in Minnesota Statutes, Section 505.01, Subd. 3, as of the date of this certificate are shown and labeled on this plat; and all public ways are shown and labeled on this plat.

Dated this 25th day of September, 2019.

Brian Person
Brian Person, Licensed Land Surveyor
Minnesota License No. 49138

STATE OF MINNESOTA
COUNTY OF ANOKA
This instrument was acknowledged before me this 25th day of September, 2019 by Brian Person.
Seth M. Monroe
Notary Public, Minnesota.
My commission expires January 31, 2024
Seth M. Monroe
Notary Printed Name

CITY COUNCIL, CITY OF RAMSEY, MINNESOTA
This plat of COR SAPPHIRE ADDITION was approved and accepted by the City Council of the City of Ramsey, Minnesota at a regular meeting thereof held this 9th day of July, 2019, and said plat is in compliance with the provisions of Minnesota Statutes, Section 505.03, Subd. 2.

City Council, City of Ramsey, Minnesota
By: John A. Johnson, Mayor
By: Charles D. Wheeling, Clerk

ANOKA COUNTY SURVEYOR
I hereby certify that in accordance with Minnesota Statutes, Section 505.021, Subd. 11, this plat has been reviewed and approved this 23rd day of December, 2019.

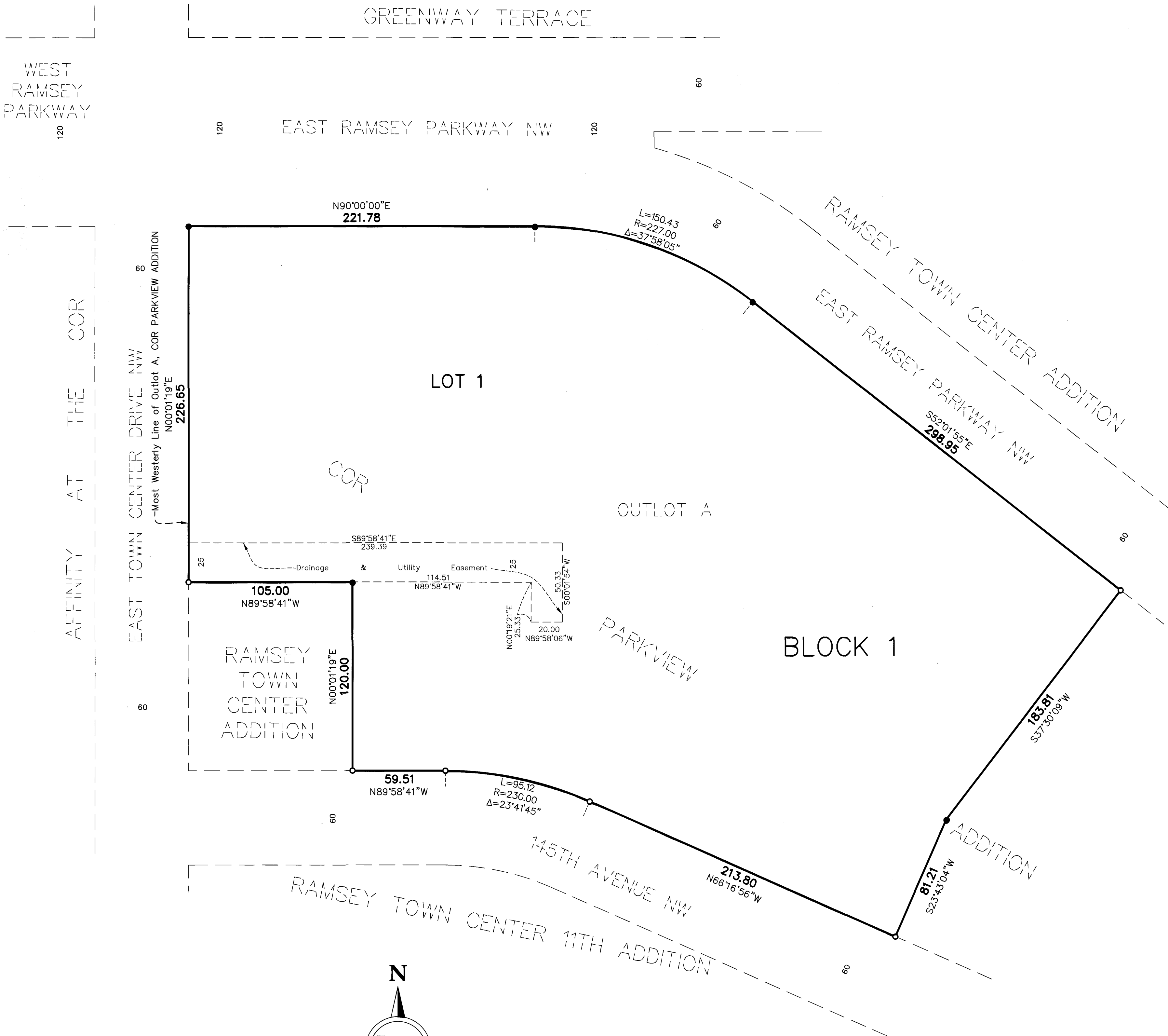
Charles F. Gitzen
Charles F. Gitzen
Anoka County Surveyor

ANOKA COUNTY AUDITOR/TREASURER
Pursuant to Minnesota Statutes, Section 505.021, Subd. 9, taxes payable in the year 2019 on the land hereinbefore described, have been paid. Also, pursuant to Minnesota Statutes, Section 272.12, there are no delinquent taxes and transfer entered this 23rd day of December, 2019.

Small M. Sawyer
Property Tax Administrator
By: Schultz, Deputy

ANOKA COUNTY RECORDER/REGISTRAR OF TITLES
County of Anoka, State of Minnesota
I hereby certify that this plat of COR SAPPHIRE ADDITION was filed in the office of the County Recorder/Registrar of Titles for public record on this 20th day of December, 2019, at 10:01 o'clock A. M. and was duly recorded as Document Number 2246866.002

Small M. Sawyer
County Recorder/Registrar of Titles
By: Schultz, Deputy



○ Denotes 1/2 inch by 14 inch iron monument set and marked with Minnesota License No. 49138.
● Denotes found 1/2 inch iron monument
For the purposes of this plat the most Westerly line of OUTLOT A, COR PARKVIEW ADDITION is assumed to bear N00°01'19\"/>

