

COR THREE NORTH COMMONS

Book 22 of Turns Page 42
City of Ramsey
County of Anoka
Sec. 28, T. 32, R. 25

KNOW ALL PERSONS BY THESE PRESENTS: That Purmort Homes, Inc., a Minnesota corporation, owner of the following described property:

Outlot F, RAMSEY TOWN CENTER 8TH ADDITION, Anoka County, Minnesota.

Has caused the same to be surveyed and platted as COR THREE NORTH COMMONS and does hereby dedicate to the public for public use the drainage and utility easements as created by this plat.

In witness whereof said Purmort Homes, Inc., a Minnesota corporation, has caused these presents to be signed by its proper officer this 16 day of SEPTEMBER, 2016

PURMORT HOMES, INC.

[Signature]
President

STATE OF MINNESOTA

COUNTY OF Anoka

This instrument was acknowledged before me this 16th day of September, 2016 by Thomas Purmort
President of Purmort Homes, Inc., a Minnesota corporation, on behalf of the corporation.

[Signature]

Notary Public, Anoka County, Minnesota

My Commission Expires Jan 31, 2019

I Eric B. Lindgren do hereby certify that this plat was prepared by me or under my direct supervision; that I am a duly Licensed Land Surveyor in the State of Minnesota; that this plat is a correct representation of the boundary survey; that all mathematical data and labels are correctly designated on this plat; that all monuments depicted on this plat have been, or will be correctly set within one year; that all water boundaries and wet lands, as defined in Minnesota Statutes, Section 505.01, Subd. 3, as of the date of this certificate are shown and labeled on this plat; and all public ways are shown and labeled on this plat.

Dated this 15th day of SEPTEMBER, 2016.

[Signature]

Eric B. Lindgren, Licensed Land Surveyor

Minnesota License No. 48176

STATE OF MINNESOTA

COUNTY OF HENNEPIN

This instrument was acknowledged before me this 15th day of September, 2016 by Eric B. Lindgren.

[Signature]

[Signature]

Notary Public, Hennepin County, Minnesota

My Commission Expires 01/31/2017

CITY COUNCIL, CITY OF RAMSEY, MINNESOTA

This plat of COR THREE NORTH COMMONS was approved and accepted by the City Council of the City of Ramsey, Minnesota at a regular meeting thereof held this 23rd day of August, 2016, and said plat is in compliance with the provisions of Minnesota Statutes, Section 505.03, Subd. 2.

CITY COUNCIL, CITY OF RAMSEY, MINNESOTA

By: [Signature], Mayor By: [Signature], Clerk

COUNTY SURVEYOR

I hereby certify that in accordance with Minnesota Statutes, Section 505.021, Subd. 11, this plat has been reviewed and approved this 27th day of SEPTEMBER, 2016.

By: [Signature]

Larry D. Hoium
Anoka County Surveyor

COUNTY AUDITOR/TREASURER

Pursuant to Minnesota Statutes, Section 505.021, Subd. 9, taxes payable in the year 2016 on the land hereinbefore described have been paid. Also, pursuant to Minnesota Statutes, Section 272.12, there are no delinquent taxes and transfer entered this 6th day of October, 2016.

[Signature]

Property Tax Administrator

By: [Signature], Deputy

COUNTY RECORDER/REGISTRAR OF TITLES

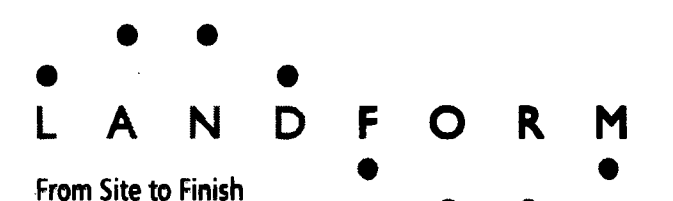
COUNTY OF ANOKA, STATE OF MINNESOTA

I hereby certify that this plat of COR THREE NORTH COMMONS was filed in the office of the County Recorder/Registrar of Titles for public record on this 6th day of October, 2017, at 11:42 o'clock P.M. and was duly recorded in Book 22 of turns Page 42, as Document Number 542515.001

[Signature]

County Recorder/Registrar of Titles

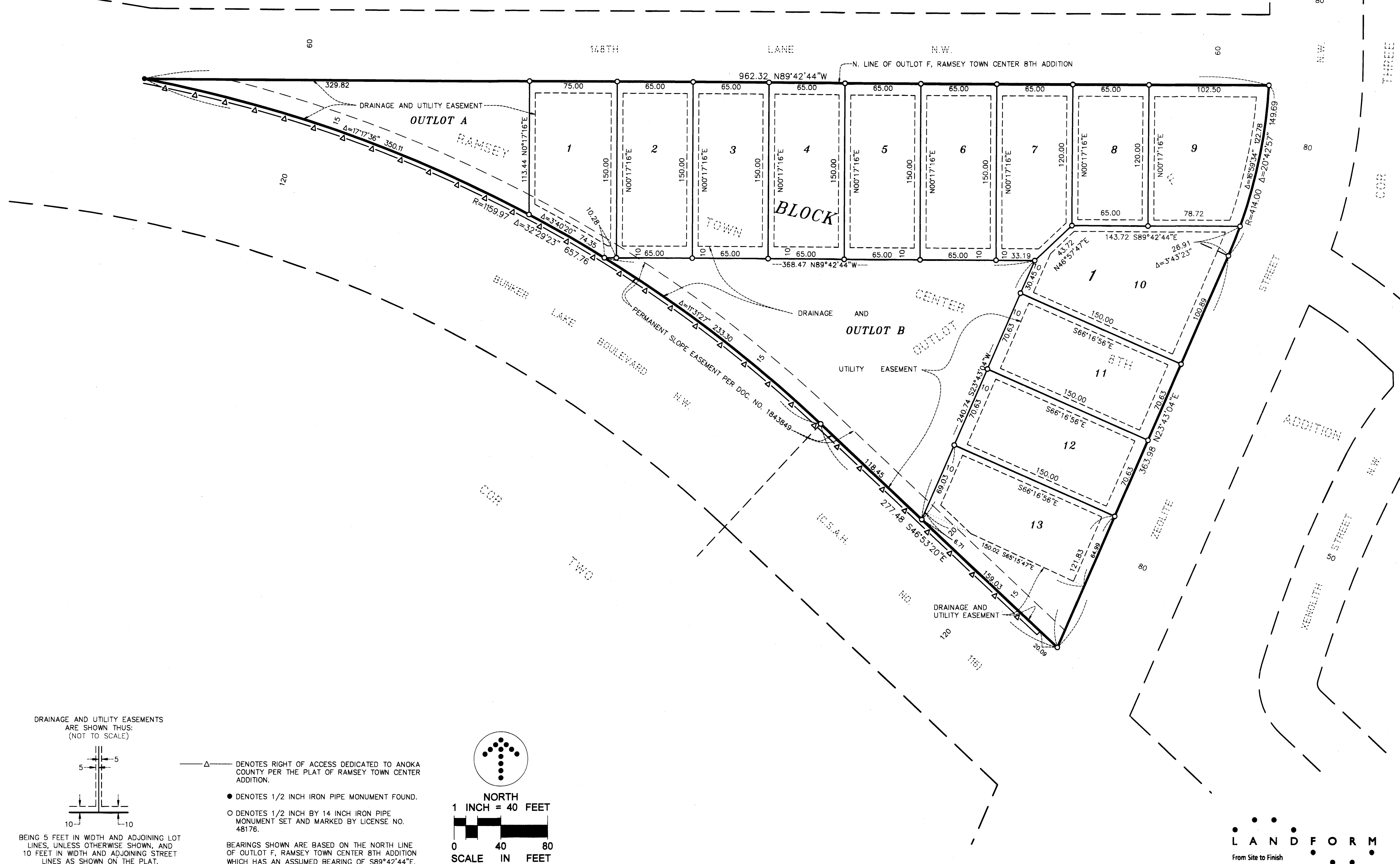
By: [Signature], Deputy



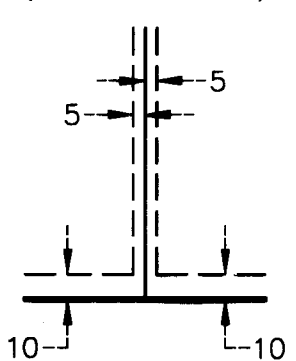
\$56.00

COR THREE NORTH COMMONS

RAMSEY TOWN CENTER 10TH ADDITION



DRAINAGE AND UTILITY EASEMENTS ARE SHOWN THUS: (NOT TO SCALE)



- △— DENOTES RIGHT OF ACCESS DEDICATED TO ANOKA COUNTY PER THE PLAT OF RAMSEY TOWN CENTER ADDITION.
- DENOTES 1/2 INCH IRON PIPE MONUMENT FOUND.
- DENOTES 1/2 INCH BY 14 INCH IRON PIPE MONUMENT SET AND MARKED BY LICENSE NO. 48176.

BEING 5 FEET IN WIDTH AND ADJOINING LOT LINES, UNLESS OTHERWISE SHOWN, AND 10 FEET IN WIDTH AND ADJOINING STREET LINES AS SHOWN ON THE PLAT.

BEARINGS SHOWN ARE BASED ON THE NORTH LINE OF OUTLOT F, RAMSEY TOWN CENTER 8TH ADDITION WHICH HAS AN ASSUMED BEARING OF S89°42'44"E.

