

CORNER VIEW ADDITION

KNOW ALL MEN BY THESE PRESENTS: THAT DALBERG BUILDERS, INC., A MINNESOTA CORPORATION, OWNERS AND PROPRIETORS OF THE FOLLOWING DESCRIBED PROPERTY SITUATE IN THE STATE OF MINNESOTA AND COUNTY OF ANOKA TO WIT:

LOT 16, SPRING LAKE PARK PLAT "A", ACCORDING TO THE PLAT ON FILE AND OF RECORD IN THE OFFICE OF THE REGISTER OF DEEDS IN AND FOR ANOKA COUNTY, MINNESOTA.

HAVE CAUSED THE SAME TO BE SURVEYED AND PLATTED AS CORNER VIEW ADDITION AND DO HEREBY DONATE AND DEDICATE TO THE PUBLIC FOR PUBLIC USE FOREVER THE STREET AND THE EASEMENTS FOR DRAINAGE AND UTILITY PURPOSES AS SHOWN ON THE PLAT.

IN WITNESS WHEREOF SAID DALBERG BUILDERS, INC., HAVE CAUSED THESE PRESENTS TO BE SIGNED BY ITS PROPER OFFICERS AND ITS CORPORATE SEAL TO BE HEREUNTO AFFIXED THIS 27th DAY OF NOVEMBER A.D. 1972.

IN PRESENCE OF

DALBERG BUILDERS, INC.

Donald B. Busch
Eldon H. Warkentin

AS TO SAMUEL C. DALBERG AND GENEVIEVE L. DALBERG
Samuel C. Dalberg PRESIDENT
Genevieve L. Dalberg SECRETARY TREASURER

STATE OF MINNESOTA
COUNTY OF ANOKA
ON THIS 27th DAY OF NOVEMBER A.D. 1972, BEFORE ME, A NOTARY PUBLIC, WITHIN AND FOR SAID COUNTY AND STATE, PERSONALLY APPEARED SAMUEL C. DALBERG AND GENEVIEVE L. DALBERG, TO ME PERSONALLY KNOWN, WHO BEING BY ME DULY SWORN, DID SAY THAT THEY ARE THE PRESIDENT AND SECRETARY TREASURER RESPECTIVELY OF DALBERG BUILDERS, INC., THE CORPORATION NAMED IN THE FOREGOING INSTRUMENT; THAT THE SEAL AFFIXED TO SAID INSTRUMENT IS THE CORPORATE SEAL OF SAID CORPORATION; AND THAT SAID INSTRUMENT WAS SIGNED AND SEALED IN BEHALF OF SAID CORPORATION BY AUTHORITY OF ITS BOARD OF DIRECTORS AND SAID SAMUEL C. DALBERG AND GENEVIEVE L. DALBERG ACKNOWLEDGED SAID INSTRUMENT TO BE THE FREE ACT AND DEED OF SAID CORPORATION.

Eldon H. Warkentin
NOTARY PUBLIC, ANOKA COUNTY, MINNESOTA
MY COMMISSION EXPIRES 10-6-1977

I HEREBY CERTIFY THAT I HAVE SURVEYED AND PLATTED THE PROPERTY DESCRIBED ON THIS PLAT AS CORNER VIEW ADDITION; THAT THIS PLAT IS A CORRECT REPRESENTATION OF SAID SURVEY; THAT ALL DISTANCES ARE CORRECTLY SHOWN ON THE PLAT IN FEET AND HUNDREDTHS OF A FOOT; THAT ALL MONUMENTS HAVE BEEN CORRECTLY PLACED IN THE GROUND AS SHOWN; THAT THE OUTSIDE BOUNDARY LINES ARE CORRECTLY DESIGNATED AND THAT THERE ARE NO WET LANDS TO BE DESIGNATED ON SAID PLAT.

William A. Carlson
WILLIAM A. CARLSON - LAND SURVEYOR
MINNESOTA REGISTRATION NO. 5648

STATE OF MINNESOTA
COUNTY OF HENNEPIN
THE SURVEYOR'S CERTIFICATE WAS SUBSCRIBED AND SWORN TO BEFORE ME, A NOTARY PUBLIC, THIS 20th DAY OF NOVEMBER A.D. 1972.

Judy Piper
NOTARY PUBLIC, HENNEPIN COUNTY, MINNESOTA
MY COMMISSION EXPIRES 10-17-79

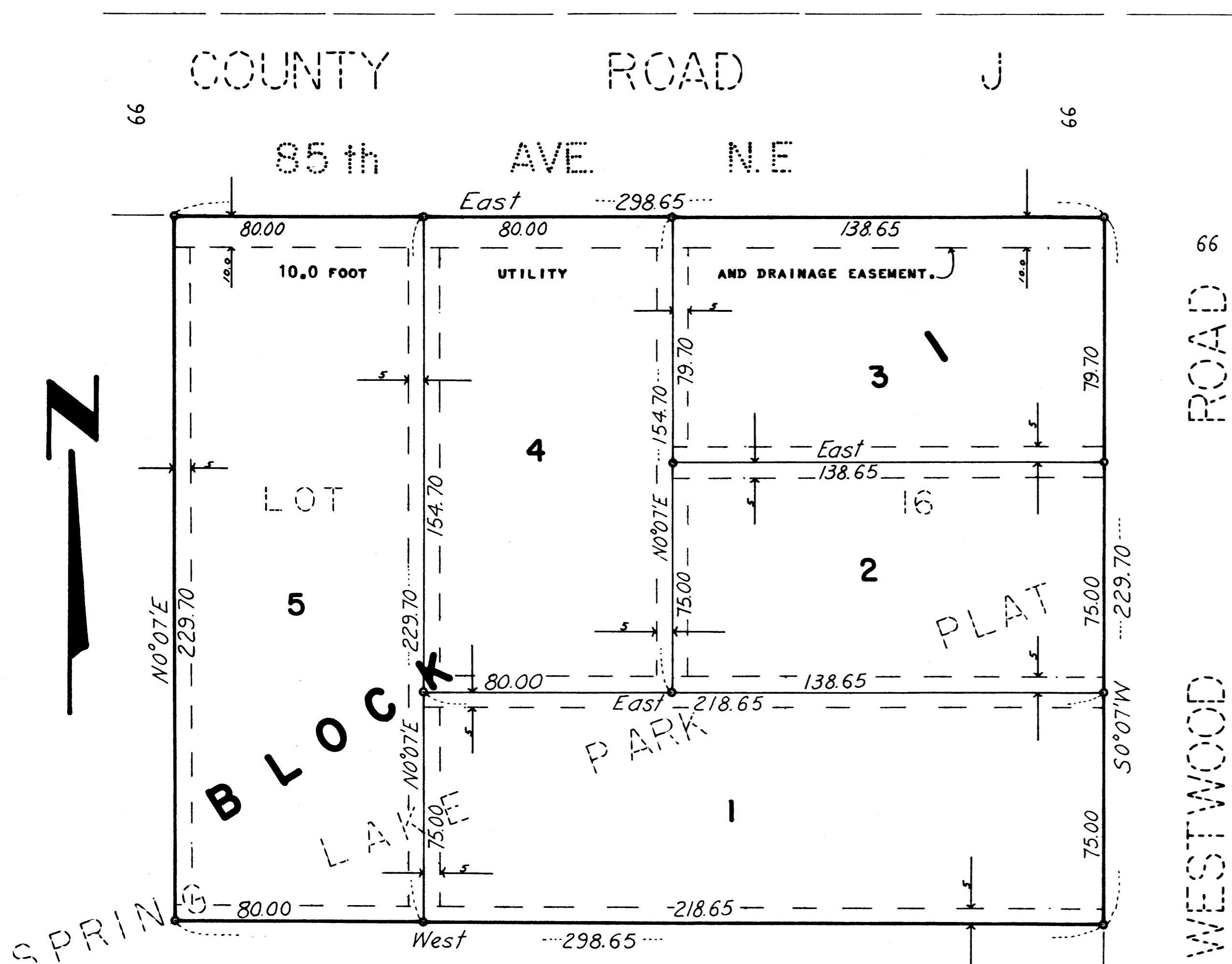
WE HEREBY CERTIFY THAT THE VILLAGE COUNCIL OF SPRING LAKE PARK, ANOKA COUNTY, MINNESOTA, DULY ACCEPTED AND APPROVED THE PLAT OF CORNER VIEW ADDITION AT A REGULAR MEETING THEREOF HELD THIS 19 DAY OF JUNE A. D. 1972.

By *Donald A. Baer* MAYOR By *Donald C. Busch* CLERK

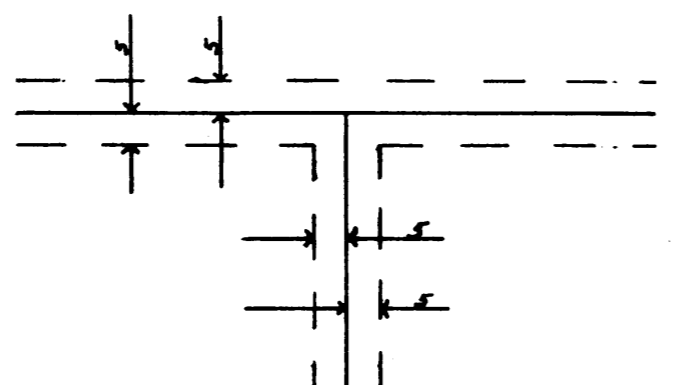
CHECKED AND APPROVED THIS 28th DAY OF DECEMBER A.D., 1972.

Robert W. Anderson
COUNTY SURVEYOR, ANOKA COUNTY,
MINNESOTA

77219



Scale: 1 inch = 30 feet
Bearings shown are assumed
o Denotes iron monument



DASHED LINES SHOWN THUS INDICATE UTILITY AND DRAINAGE EASEMENTS BEING 5 FEET IN WIDTH AND PARALLEL WITH LOT LINES.

"NO DELINQUENT TAXES AND TRANSFER ENTERED"

Jan 4 1973
Charles R. Zepher
Auditor, Anoka County

By *Nancy C. Caspa* Deputy

Office of REGISTRAR OF TITLES
STATE OF MINNESOTA
COUNTY OF ANOKA

I hereby certify that the within instrument was filed in this office on the 27th day of NOVEMBER A.D. 1972 at 3:30 clock P.
By *Jean Vevea* DEPUTY REGISTRAR OF TITLES