

# CORRIVEAU ESTATES

CITY OF COON RAPIDS COUNTY OF ANOKA

OAKS OF SHENANDOAH 20TH ADD.

THISTLEWOOD ADD.

KNOW ALL PERSONS BY THESE PRESENTS that Bankers Trust Company of California, N.A., owner and proprietor, and James G. Corriveau and Elizabeth A. Corriveau, husband and wife, contract purchasers of the following described property situated in the County of Anoka, State of Minnesota, to-wit:

Lot 3, Block 1, Griffith Estates, Anoka County, Minnesota.

Have caused the same to be surveyed and platted as CORRIVEAU ESTATES and do hereby dedicate to the public for public use forever the drainage and utility easements as shown on the plat. In witness whereof said Bankers Trust Company of California, N.A., has caused these presents to be signed by its proper officers this 26 day of August, 1997. Also in witness whereof said James G. Corriveau and Elizabeth A. Corriveau have hereunto set their hands this 26 day of August, 1997.

BANKERS TRUST COMPANY OF CALIFORNIA, N.A.:

*Janice M. ...*  
SIGNED: *James G. Corriveau* James G. Corriveau *Elizabeth A. Corriveau* Elizabeth A. Corriveau  
STATE OF ~~NEW YORK~~ NEW YORK The foregoing instrument was acknowledged before me this 26 day of August, 1997, by *Brendan Millan* BRENDAN MILLAN COUNTY OF ~~NEW YORK~~ NEW YORK and *Marc Fishman* MARC FISHMAN as ASSISTANT SECRETARY of Bankers Trust Company of California, N.A., on behalf of the association.

*Wanda S. ...*  
Notary Public, N.Y. County, N.Y.  
My Commission expires 11-1-97

STATE OF MINNESOTA) The foregoing instrument was acknowledged before me this 26 day of August, 1997, by James G. Corriveau and Elizabeth A. Corriveau, husband and wife. COUNTY OF Anoka

JOHN A. LYNCH  
NOTARY PUBLIC - MINNESOTA  
My Comm. Exp. Jan. 31, 2000

*John A. Lynch*  
Notary Public, Anoka County, Minnesota  
My Commission expires 1-31-00

JOHN A. LYNCH  
NOTARY PUBLIC - MINNESOTA  
My Comm. Exp. Jan. 31, 2000

I hereby certify that I have surveyed and platted the land described in the dedication on this plat as CORRIVEAU ESTATES; that the plat is a correct representation of said survey; that all distances are correctly shown on said plat in feet and hundredths of a foot; that the monuments have been correctly placed in the ground as shown; that the outside boundaries are correctly designated on said plat; and that there are no wetlands or public highways to be designated on said plat other than as shown thereon.

*Jeffrey N. Caine*  
Jeffrey N. Caine, Registered Land Surveyor  
Minnesota Registration No. 12251

STATE OF MINNESOTA) The surveyors certificate was acknowledged before me a Notary Public, this 26 day of August, 1997. COUNTY OF ANOKA ) by Jeffrey N. Caine.

JILL M KENT  
NOTARY - MINNESOTA  
ANOKA COUNTY  
MY COMMISSION EXPIRES 1-31-00

*Jill M Kent*  
Notary Public, Anoka County, Minnesota  
My Commission expires 1-31-00

The annexed plat of CORRIVEAU ESTATES was approved by the Planning Commission of the City of Coon Rapids, Minnesota this 17 day of June, 1997.

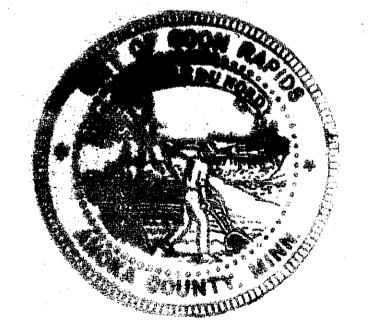
By: *Donna M. Naue*, Chairman

The annexed plat of CORRIVEAU ESTATES was approved by the City Council of the City of Coon Rapids, Minnesota, at a regular meeting thereof held this 1 day of July, 1997. If applicable, the written comments and recommendations of the Commissioner of Transportation and the County Highway Engineer have been received by the city or the prescribed 30 day period has elapsed without receipt of such comments and recommendations, as provided by Minn. Statutes, Section 505.03, Subd. 2.

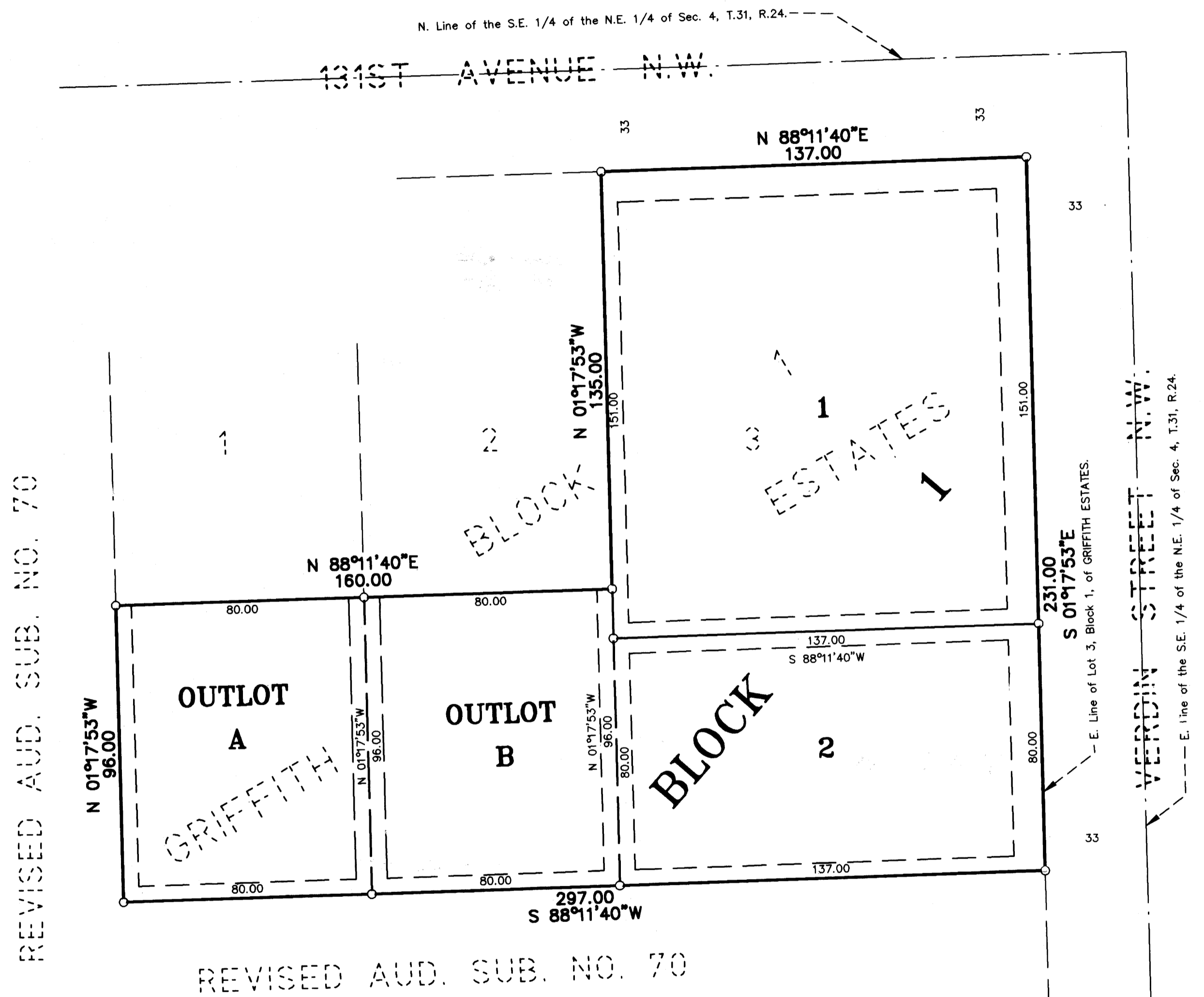
By: *William A. Thompson* Mayor By: *Lorraine Menegh* Clerk

This plat has been checked and approved this 26 day of August, 1997.

By: *Merlyn D. Anderson*  
Anoka County Surveyor  
by *Harry D. ...* deputy

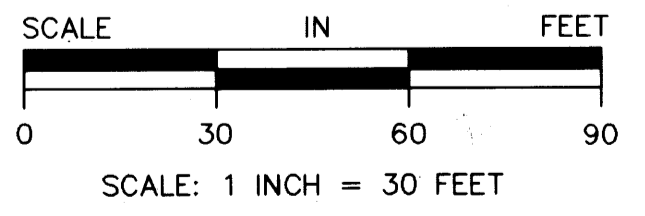
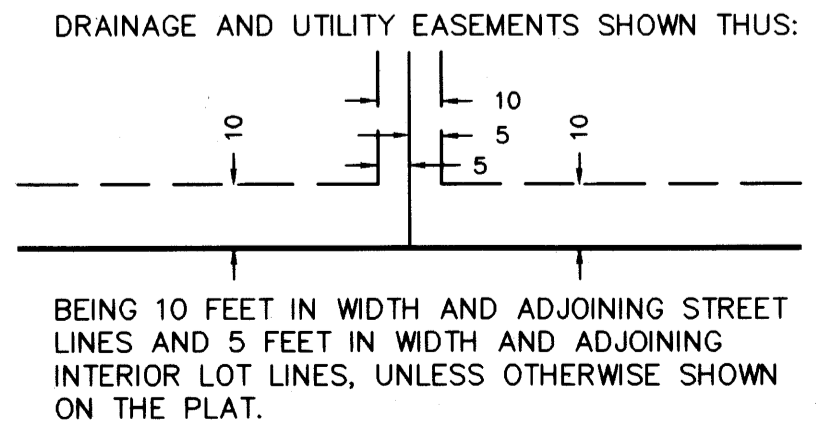


CAINE & ASSOCIATES  
LAND SURVEYORS, INC.



REVISED AUD. SUB. NO. 70

REVISED AUD. SUB. NO. 70



● DENOTES IRON MONUMENT FOUND  
○ DENOTES 1/2 INCH IRON PIPE SET.

I HEREBY CERTIFY THAT THE COMMENTS AND RECOMMENDATIONS TAKEN ON THIS LAND RECORDS WITHIN ARE PAID AND THE TRANSFER IS ENTERED August 26 1997  
EDWARD M. TRESTA  
PROPERTY TAX ADMINISTRATOR  
COUNTY OF ANOKA

OFFICE OF COUNTY RECORDER  
STATE OF MINNESOTA, COUNTY OF ANOKA  
I hereby certify that the within instrument was filed in this office for record on the 26 day of August, A.D., 1997  
in book 54, page 48  
*Edward M. Tresta*  
County Recorder  
By: *KHT*

FOR THE PURPOSES OF THIS PLAT, THE EAST LINE OF LOT 3, BLOCK 1, GRIFFITH ESTATES IS ASSUMED TO BEAR S01°17'53"E.

REC # 970 58549 in the Amount of \$ 215<sup>00</sup>