

COUNTRY OAKS NORTH FOURTH ADDITION

KNOW ALL PERSONS BY THESE PRESENTS: That SW Development, LLC, a Minnesota limited liability company, owner of the following described property:

Outlot A, COUNTRY OAKS NORTH THIRD ADDITION, Anoka County, Minnesota.

Has caused the same to be surveyed and platted as COUNTRY OAKS NORTH FOURTH ADDITION and does hereby dedicate to the public for public use the public ways and the drainage and utility easements as shown on this plat.

In witness whereof said SW Development, LLC, a Minnesota limited liability company, has caused these presents to be signed by its proper officer this 28 day of April, 2020.

Signed: SW Development, LLC

By: Shawn P. Weinand Chief Manager
Shawn P. Weinand

STATE OF MINNESOTA
COUNTY OF ANOKA

This instrument was acknowledged before me on 28th day of April, 2020 by Shawn P. Weinand, Chief Manager of SW Development, LLC, a Minnesota limited liability company.

Michelle Hartner (Signature)

Michelle Hartner (Print Name)

Notary Public, Anoka County, Minnesota
My Commission Expires 1.31.2025

I Dennis B. Olmstead do hereby certify that this plat was prepared by me or under my direct supervision; that I am a duly Licensed Land Surveyor in the State of Minnesota; that this plat is a correct representation of the boundary survey; that all mathematical data and labels are correctly designated on this plat; that all monuments depicted on this plat have been, or will be correctly set within one year; that all water boundaries and wet lands, as defined in Minnesota Statutes, Section 505.01, Subd. 3, as of the date of this certificate are shown and labeled on this plat; and all public ways are shown and labeled on this plat.

Dated this 29th day of July, 2019.

Dennis B. Olmstead

Dennis B. Olmstead, Licensed Land Surveyor
Minnesota License No. 18425

STATE OF Minnesota
COUNTY OF Hennepin

This instrument was acknowledged before me this 29th day of July, 2019 by Dennis B. Olmstead.

Susan L. Marks (Signature)

Susan L. Marks (Print Name)

Notary Public, Anoka County, Minnesota
My Commission Expires 1/31/2020

City Council, City of Andover, Minnesota

This plat of COUNTRY OAKS NORTH FOURTH ADDITION was approved and accepted by the City Council of the City of Andover, Minnesota at a regular meeting thereof held this 18 day of June, 2019, and said plat is in compliance with the provisions of Minnesota Statutes, Section 505.03, Subd. 2.

City Council, City of Andover, Minnesota

By: Julie Mude, Mayor

By: [Signature], Clerk

County Surveyor

I hereby certify that in accordance with Minnesota Statutes, Section 505.021, Subd. 11, this plat has been reviewed and approved this 7th day of May, 2020.

By: Charles F. Gitzen
Charles F. Gitzen
Anoka County Surveyor

County Auditor/Treasurer

Pursuant to Minnesota Statutes, Section 505.021, Subd. 9, taxes payable in the year 2020 on the land hereinbefore described have been paid. Also, pursuant to Minnesota Statutes, Section 272.12, there are no delinquent taxes and transfer entered this 7 day of May, 2020.

Jonell M. Sawyer
Property Tax Administrator

By: [Signature], Deputy

County Recorder/Registrar of Titles
County of Anoka, State of Minnesota

I hereby certify that this plat of COUNTRY OAKS NORTH FOURTH ADDITION was filed in the office of the County Recorder/Registrar of Titles for public record on this 7th day of May, 2020, at 11:55 o'clock A.M. and was duly recorded as Document Number 2260538.001.

Jonell M Sawyer
County Recorder/Registrar of Titles

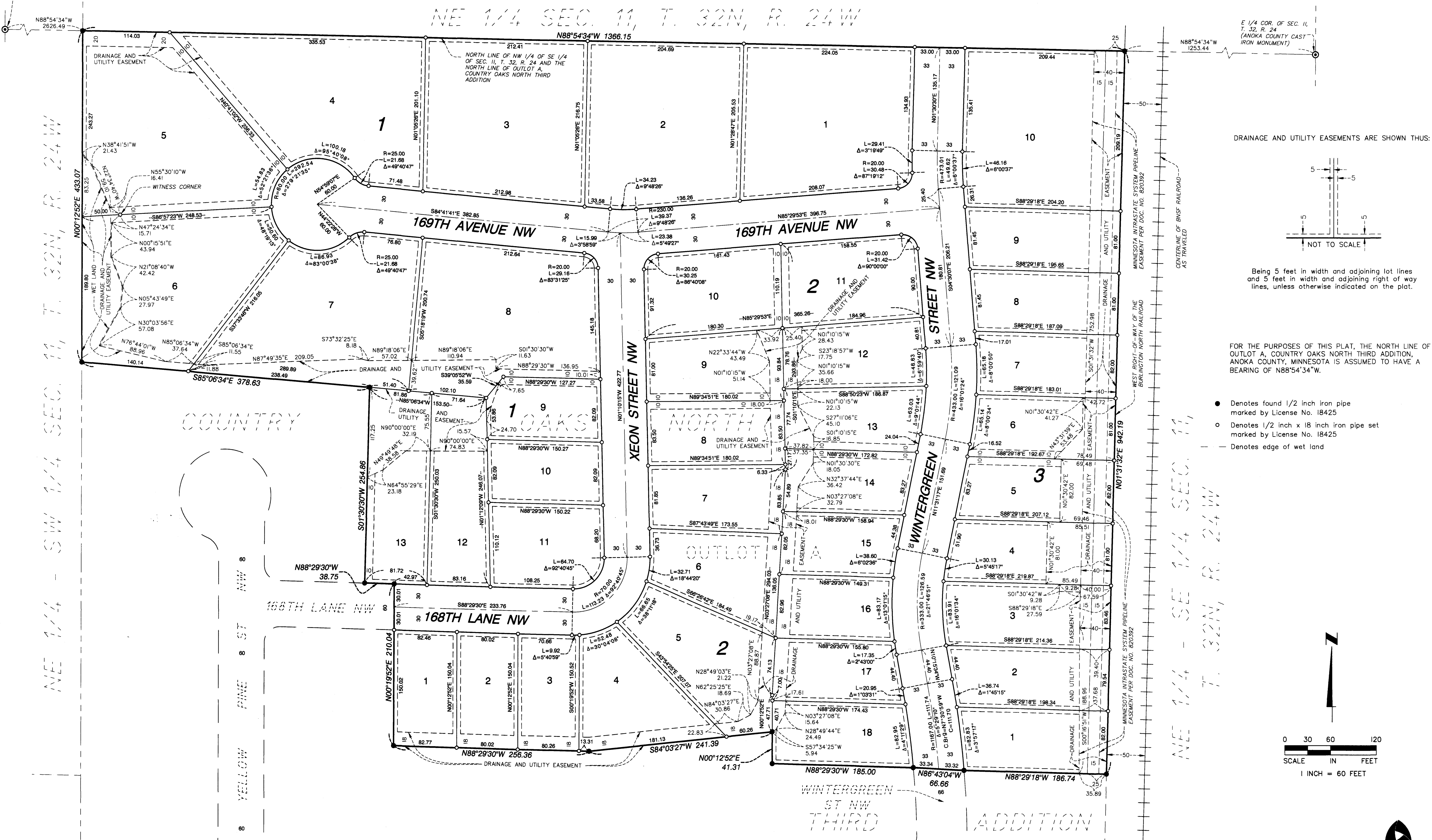
By: [Signature], Deputy

COUNTRY OAKS NORTH FOURTH ADDITION

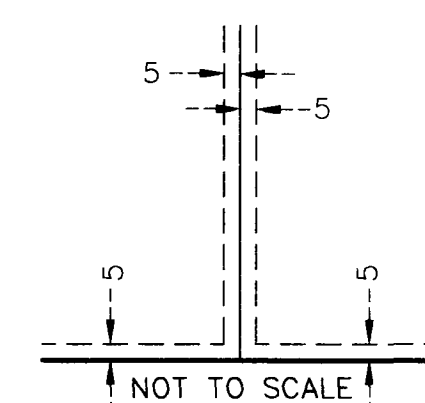
NE 1/4 SEC. 11, T. 32N, R. 24W

W 1/4 COR. OF SEC. 11,
T. 32, R. 24
(ANOKA COUNTY CAST
IRON MONUMENT)

E 1/4 COR. OF SEC. 11,
T. 32, R. 24
(ANOKA COUNTY CAST
IRON MONUMENT)



DRAINAGE AND UTILITY EASEMENTS ARE SHOWN THUS:



Being 5 feet in width and adjoining lot lines
and 5 feet in width and adjoining right of way
lines, unless otherwise indicated on the plat.

FOR THE PURPOSES OF THIS PLAT, THE NORTH LINE OF
OUTLOT A, COUNTRY OAKS NORTH THIRD ADDITION,
ANOKA COUNTY, MINNESOTA IS ASSUMED TO HAVE A
BEARING OF N88°54'34"W.

- Denotes found 1/2 inch iron pipe marked by License No. 18425
- Denotes 1/2 inch x 18 inch iron pipe set marked by License No. 18425
- - - Denotes edge of wet land

