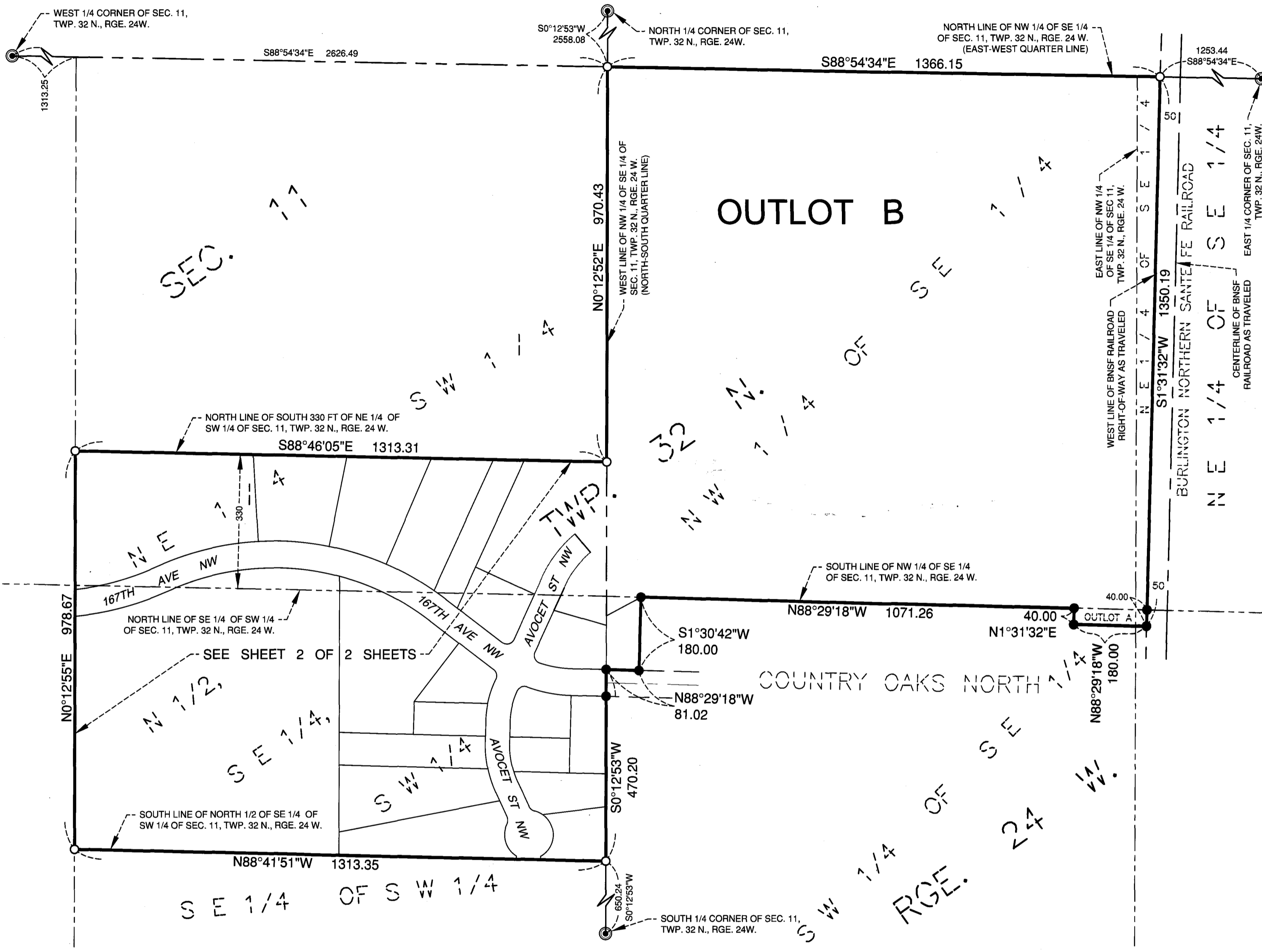


# COUNTRY OAKS NORTH SECOND ADDITION

BK 79 of Abst PG 13

6/22/16 2140572.001

CITY OF ANDOVER  
COUNTY OF ANOKA  
SEC. 11, TWP. 32, RGE. 24



KNOW ALL PERSONS BY THESE PRESENTS: That S.W. Land, LLC, a Minnesota limited liability company, owner of the following described property:

The South 330 feet of the Northeast Quarter of the Southwest Quarter, Section 11, Township 32, Range 24, Anoka County, Minnesota.

ALSO

The North Half of the Southeast Quarter of the Southwest Quarter of Section 11, Township 32, Range 24, Anoka County, Minnesota.

ALSO

Lot 1, Block 2, COUNTRY OAKS NORTH, Anoka County, Minnesota.

ALSO

Outlot A, COUNTRY OAKS NORTH, Anoka County, Minnesota.

KNOW ALL PERSONS BY THESE PRESENTS: That S.W. Investments, LLC, a Minnesota limited liability company, owner of the following described property:

The Northwest Quarter of the Southeast Quarter, Section 11, Township 32, Range 24, Anoka County, Minnesota.

ALSO

That part of the Northeast Quarter of the Southeast Quarter of Section 11, Township 32, Range 24, lying westerly of the west right-of-way line of Burlington Northern Railroad as now laid out and traveled, Anoka County, Minnesota.

Have caused the same to be surveyed and platted as COUNTRY OAKS NORTH SECOND ADDITION and do hereby dedicate to the public for public use the park, public ways, and the drainage and utility easements as shown by this plat.

In witness whereof said S.W. Land, LLC, a Minnesota limited liability company, has caused these presents to be signed by its proper officer this 15<sup>th</sup> day of June, 2016.

S.W. Land, LLC  
*Shawn P. Weinand* Chief Manager  
Shawn P. Weinand

STATE OF MINNESOTA  
COUNTY OF ANOKA

This instrument was acknowledged before me on this 15<sup>th</sup> day of June, 2016, by Shawn P. Weinand, Chief Manager of S.W. Land, LLC, a Minnesota limited liability company.

*Michelle Hartner*  
**MICHELLE HARTNER**  
Notary Public, ANOKA County, Minnesota  
My Commission Expires January 31, 2020.

In witness whereof said S.W. Investments, LLC, a Minnesota limited liability company, has caused these presents to be signed by its proper officer this 15<sup>th</sup> day of June, 2016.

S.W. Investments, LLC  
*Shawn P. Weinand* Chief Manager  
Shawn P. Weinand

STATE OF MINNESOTA  
COUNTY OF ANOKA

This instrument was acknowledged before me on this 15<sup>th</sup> day of June, 2016, by Shawn P. Weinand, Chief Manager of S.W. Investments, LLC, a Minnesota limited liability company.

*Michelle Hartner*  
**MICHELLE HARTNER**  
Notary Public, ANOKA County, Minnesota  
My Commission Expires January 31, 2020.

I Michael R. Williams do hereby certify that this plat was prepared by me or under my direct supervision; that I am a duly Licensed Land Surveyor in the State of Minnesota; that this plat is a correct representation of the boundary survey; that all mathematical data and labels are correctly designated on this plat; that all monuments depicted on this plat have been, or will be correctly set within one year; that all water boundaries and wet lands, as defined in Minnesota Statutes, Section 505.01, Subd. 3, as of the date of this certificate are shown and labeled on this plat; and all public ways are shown and labeled on this plat.

Dated this 14<sup>th</sup> day of June, 2016.

*Michael R. Williams*  
Michael R. Williams, Licensed Land Surveyor  
Minnesota License No. 44076

STATE OF MINNESOTA  
COUNTY OF HENNEPIN

This instrument was acknowledged before me this 14<sup>th</sup> day of JUNE, 2016 by Michael R. Williams.

*Michael P. Koller*  
**MICHAEL P. KOLLER**  
Notary Public, Hennepin County, Minnesota  
My Commission Expires January 31, 2021.

CITY COUNCIL, CITY OF ANDOVER, MINNESOTA

This plat of COUNTRY OAKS NORTH SECOND ADDITION was approved and accepted by the City Council of the City of Andover, Minnesota at a regular meeting thereof held this 7<sup>th</sup> day of June, 2016, and said plat is in compliance with the provisions of Minnesota Statutes, Section 505.03, Subd. 2.

By *Julie Mude*, Mayor  
By *[Signature]*, Clerk

COUNTY SURVEYOR

I hereby certify that in accordance with Minnesota Statutes, Section 505.021, Subd. 11, this plat has been reviewed and approved this 22<sup>nd</sup> day of June, 2016.

*Larry D. Holium by Charles F. Ritzgen, Deputy*  
Larry D. Holium, Anoka County Surveyor

COUNTY AUDITOR / TREASURER

Pursuant to Minnesota Statutes, Section 505.021, Subd. 9, taxes payable in the year 2016 on the land hereinbefore described have been paid. Also, pursuant to Minnesota Statutes, Section 272.12, there are no delinquent taxes and transfer entered this 22 day of June, 2016.

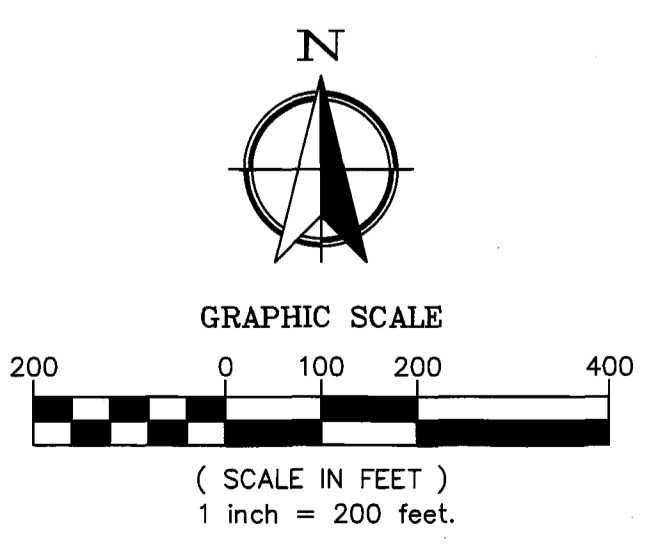
*Jonell M. Sawyer*  
Property Tax Administrator  
By *[Signature]*, Deputy

COUNTY RECORDER / REGISTRAR OF TITLES  
County of Anoka, State of Minnesota

I hereby certify that this plat of COUNTRY OAKS NORTH SECOND ADDITION was filed in the office of the County Recorder/Registrar of Titles for public record on this 22 day of

June, 2016, at 2:59 o'clock P.M. and was duly recorded in Book 79 of Abst Page 13, as Document Number 2140572.001.

*Jonell M. Sawyer*  
County Recorder/Registrar of Titles  
By *[Signature]*, Deputy



- LEGEND**
- DENOTES IRON MONUMENT FOUND MARKED WITH CAP STAMPED "RLS 40776"
  - DENOTES IRON MONUMENT SET WITH CAP STAMPED "RLS 44076"
  - ◎ DENOTES ANOKA COUNTY SECTION CORNER
- BASIS OF BEARING**
- THE ORIENTATION OF THIS BEARING SYSTEM IS BASED ON THE SOUTH LINE OF THE NORTH 1/2 OF THE SE 1/4 OF THE SW 1/4 OF SEC. 11, TWP. 32 N, RGE. 24 W AND IS ASSUMED TO BEAR NORTH 88° 41' 51" WEST.



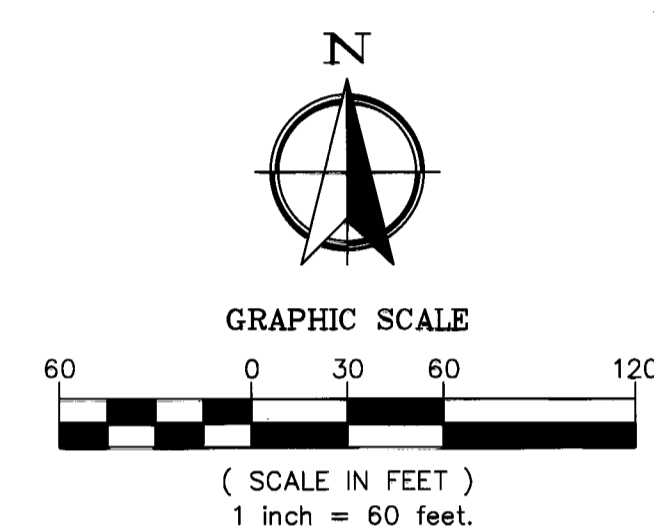
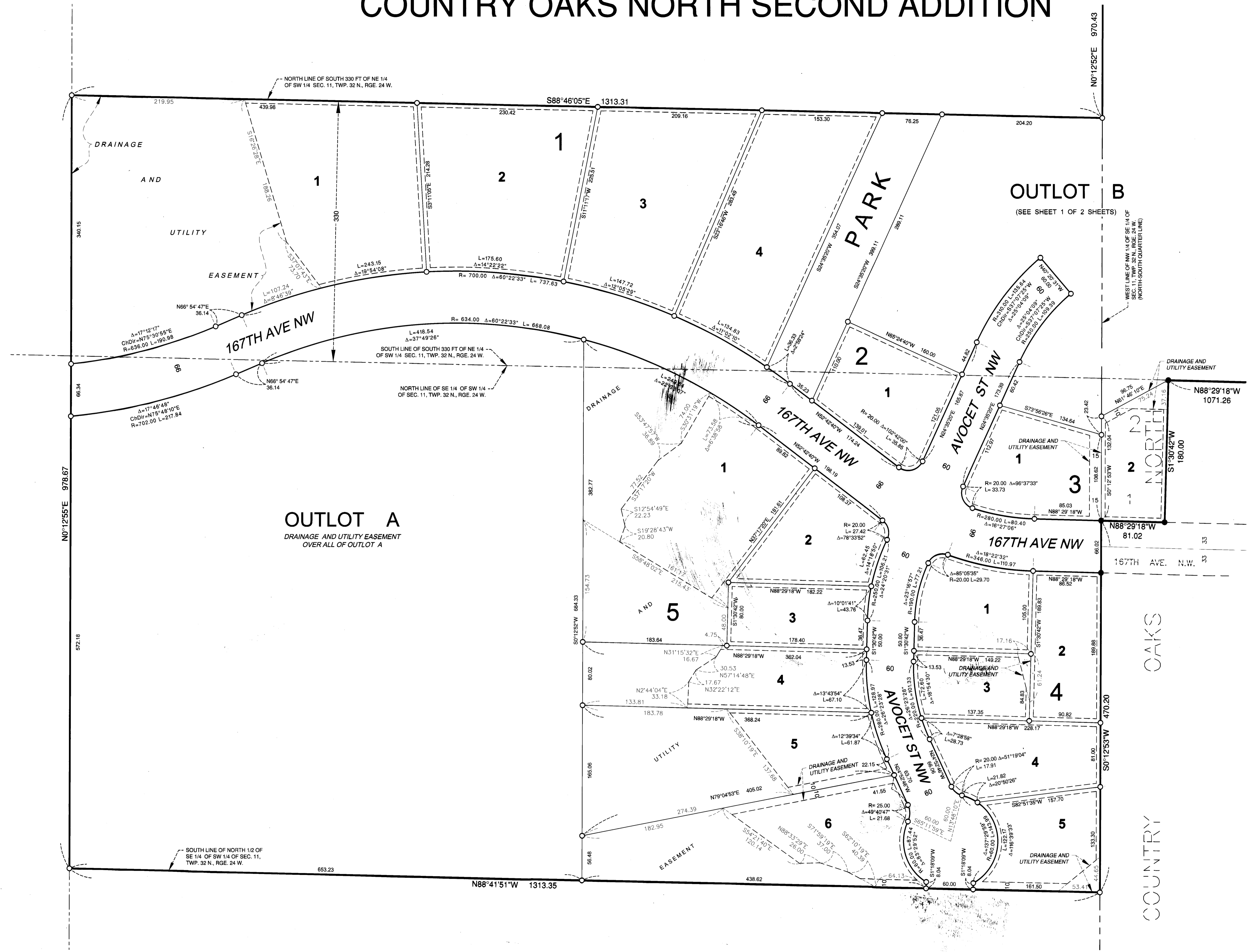
\$ 56

# COUNTRY OAKS NORTH SECOND ADDITION

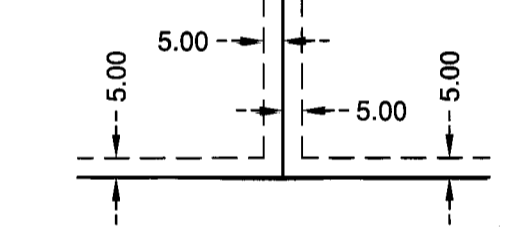
13k 790 Fabst P813

6/22/16 2140672.001

CITY OF ANDOVER  
COUNTY OF ANOKA  
SEC. 11, TWP. 32, RGE. 24



DRAINAGE AND UTILITY EASEMENT ARE SHOWN THUS: (NO SCALE)



### LEGEND

- DENOTES IRON MONUMENT FOUND MARKED WITH CAP STAMPED "RLS 40776"
- DENOTES IRON MONUMENT SET WITH CAP STAMPED "RLS 44076"

### BASIS OF BEARING

THE ORIENTATION OF THIS BEARING SYSTEM IS BASED ON THE SOUTH LINE OF THE NORTH 1/2 OF THE SE 1/4 OF THE SW 1/4 OF SEC. 11, TWP. 32 N, RGE. 24 W AND IS ASSUMED TO BEAR NORTH 88° 41' 51" WEST.

